



ADT B077JR5DS3 Keychain Remote User Guide

[Home](#) » [ADT](#) » ADT B077JR5DS3 Keychain Remote User Guide 





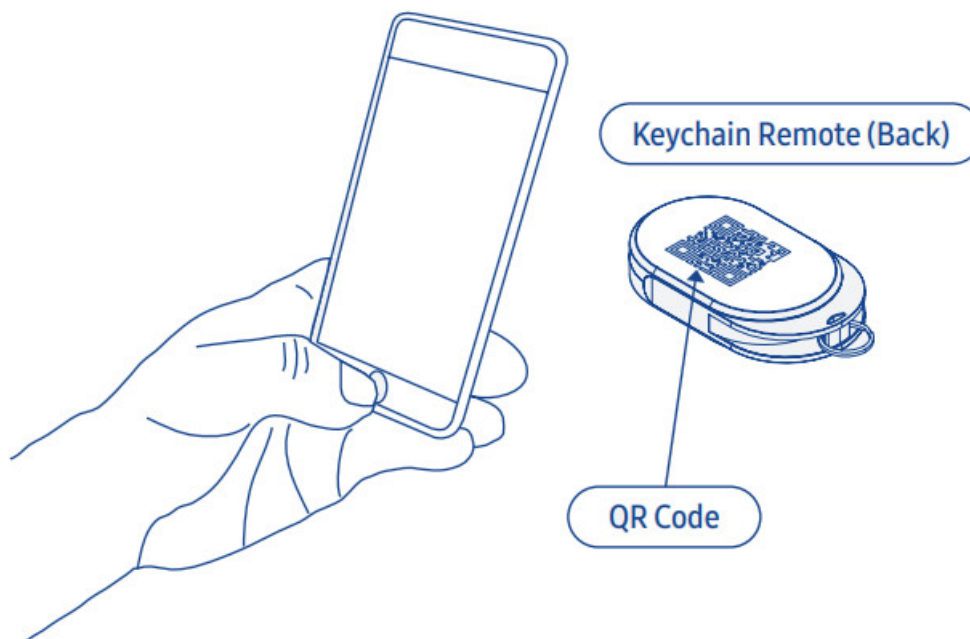
Contents

- [1 Setup](#)
- [2 Testing](#)
- [3 Troubleshooting](#)
- [4 Use](#)
- [5 Suggestions](#)
- [6 Works With SmartThings](#)
- [7 Documents / Resources](#)
 - [7.1 References](#)
- [8 Related Posts](#)

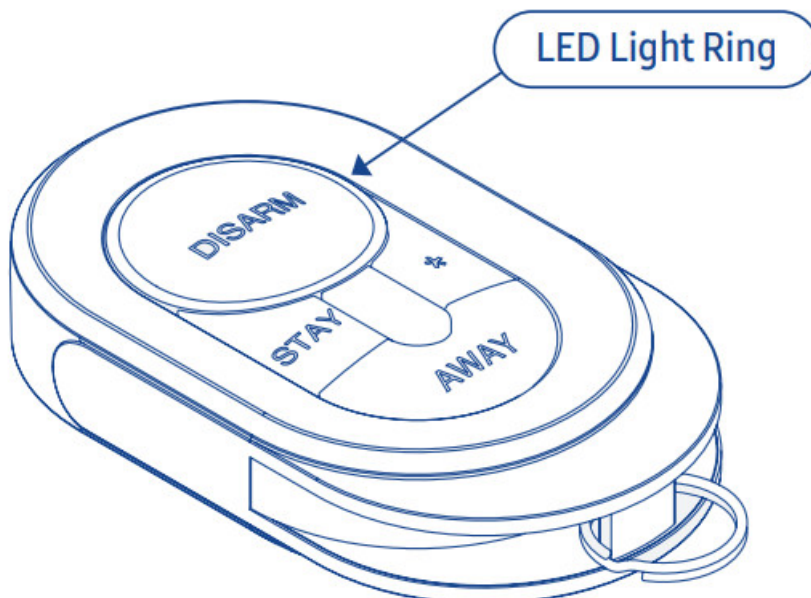
Setup

1. Make sure the ADT Keychain Remote is within 15 feet of your SmartThings ADT Security Hub during setup.
 - Once you've set up your remote, you'll be able to use it anywhere within 350 feet of the ADT Security Hub. (Exact range depends on your home's construction, environment, the position of the ADT Security Hub, and the position and number of other connected devices.)
 - Make sure that your ADT Security Hub is disarmed before connecting a new device.
 - Make sure that you only set up one new device at a time.
2. Use the SmartThings app on your smartphone to select the "My Home" tab. Select "Things", and then "Add a Thing".

3. Use the SmartThings app to scan the QR code on the back of the remote and then follow the on-screen instructions to complete the setup.



4. Press and hold the “Disarm” and “Away” buttons on the remote for 5 seconds, and then release.



5. Remove the QR code from the back of the remote and attach it to the ADT Security Hub User Guide for future reference.

Testing

You can test your ADT Keychain Remote by performing a Walk Test on the ADT Security Hub, pressing any button on the remote while within 15 feet of the ADT Security Hub, and then checking its status on the touchscreen. See the ADT Security Hub User Guide for more details.

Note: If you have an ADT professional monitoring service activated, additional testing is required whenever you connect a new device. Follow the on-screen instructions in the SmartThings app to complete testing.

Troubleshooting

If the Keychain Remote did not pair successfully with the ADT Security Hub, follow these instructions to reset it:

1. Press and hold all four buttons for 5 seconds.
2. Release the button when the red LED starts blinking quickly. If the button is released before the reset is complete, the reset will not be successful.
3. Once the reset is complete, the green LED will turn on for 5 seconds.
4. Use the SmartThings app to complete the setup.

If you're still having trouble connecting the ADT Keychain Remote, please visit [SmartThings.com/Support-ADT](https://www.smartthings.com/support-adt) for assistance.

Use

- Press the Away button on your remote for 2 seconds to arm the ADT Security Hub. The door, window, and motion detectors will be armed.
- Press the Disarm button on your remote for 2 seconds to disarm the ADT Security Hub. Door, window, and motion detectors will be disarmed.
- Press the Stay button on your remote for 2 seconds to arm the ADT Security Hub in Stay Mode. Door and window detectors will be armed.
- Press the * and Stay buttons on your remote for 3 seconds to send a panic alert (requires optional ADT professional monitoring service).

Suggestions

The ADT Keychain Remote is an ADT Security Hub accessory that allows you to arm or disarm your SmartThings ADT home security system at the press of a button, or to send a panic alert to ADT professional monitoring services (additional fees apply).

There are many ways you can use an ADT Keychain Remote:

- Use one to arm your system and set it to initiate optional ADT professional monitoring services if an intrusion is detected in your home (additional fees apply).
- Use one to disarm your system and set it to turn on connected lights when you arrive home in the evening.
- Use one to arm your system and set it to turn down a connected thermostat when you leave.
- Use one to disarm your system and set it to turn on connected speakers when you come home.

Visit [SmartThings.com/Welcome](https://www.smartthings.com/welcome) for more ideas, tips, and special offers.

Works With SmartThings

SmartThings works with a wide range of connected devices, including lights, cameras, locks, thermostats, and sensors. It also works with Google Assistant and Amazon Alexa so you can control your smart home with voice commands.

Look for the Works with SmartThings label next time you're buying a connected device for your home, or visit [SmartThings.com](https://www.smartthings.com) to see the full list of compatible devices.



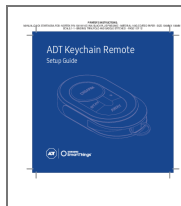
SmartThings, Inc., 665 Clyde Ave, Mountain View, CA 94043, USA. Information in this document is subject to change without notice. Copyright 2017 SmartThings, Inc.

All rights reserved.

ADT and the ADT logo are marks and/or registered marks of ADT. Unauthorized use is strictly prohibited. Revised 06/17.




P/N 10015710C

Documents / Resources



[ADT B077JR5DS3 Keychain Remote](#) [pdf] User Guide
B077JR5DS3, Keychain Remote, B077JR5DS3 Keychain Remote, Remote

References

-  [One simple home system. A world of possibilities.](#) | [SmartThings](#)
-  [One simple home system. A world of possibilities.](#) | [SmartThings](#)
-  [One simple home system. A world of possibilities.](#) | [SmartThings](#)

Manuals+.