



ADTZWM Series Wi-Fi and Z-Wave Module Installation Guide

[Home](#) » [ADT](#) » ADTZWM Series Wi-Fi and Z-Wave Module Installation Guide 



ADTZWM Series Wi-Fi® and Z-Wave® Module

Installation and Setup Guide

Contents

- [1 General Information](#)
- [2 Programming](#)
- [3 Specifications](#)
- [4 FCC CLASS B STATEMENT](#)
- [5 WARRANTY & SUPPORT](#)
- [6 Documents / Resources](#)
 - [6.1 References](#)
- [7 Related Posts](#)

General Information

The Communication Module allows the Control Panel to communicate with the WTS700 Wireless Keypad and Amazon Alexa via Wi-Fi.

The ADTZWM communications module is intended to provide compatible ADT Control Panels with a Wi-Fi connection as well as connection with and the ability to control Z-Wave devices. The module connects directly to the Control Panel and is powered via the Control Panel's connection. The ADTZWM Series includes models ADTZWM and ADTZWMX.

Compatible Control Panels:


ADT7AIO/ADT5AIO Series – Installation Guide P/N 800-24121 or higher.

ADTHYBWL Series – Installation Guide P/N 800-24125 or higher.

ADT2X16AIO Series – Installation Guide P/N 800-24341 or higher.

NOTE: Control Panel Firmware Release 4.5 or later is required for the ADTZWMX.

Installing the Module in the ADT7AIO/ADT5AIO or ADT2X16AIO Series

 Ensure that all electrical power is removed from the control before installing the module. Unplug the power supply and disconnect the backup battery.

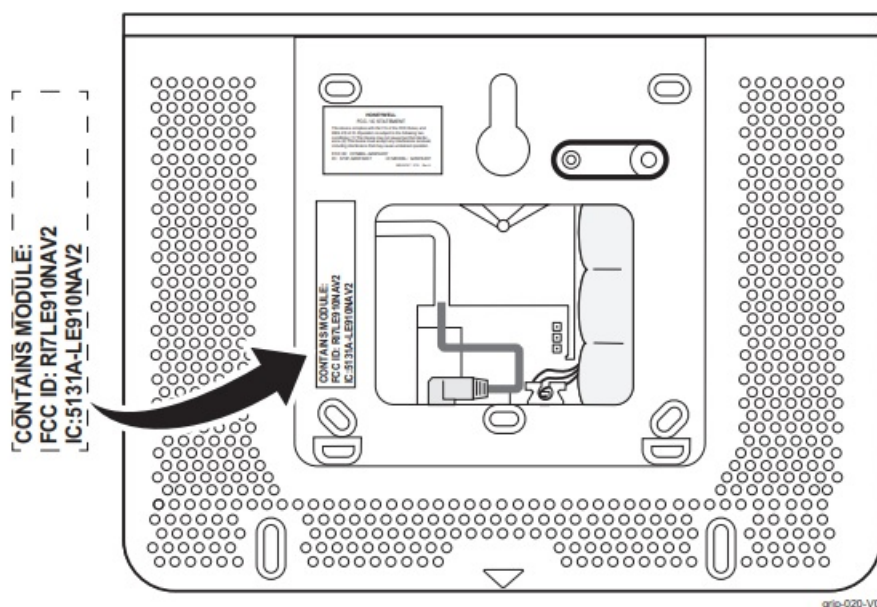


Figure 1. FCC/IC Label Location

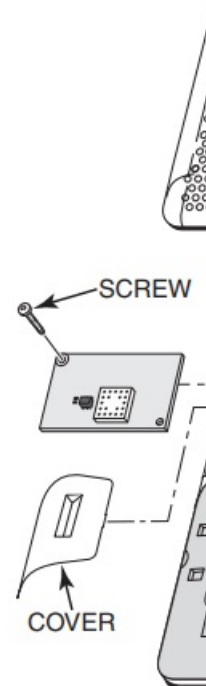


Figure 2

1. Affix the provided FCC/IC label (P/N 800-24286 on the Control Panel's case back (refer to Figure 1).
2. If the Control Panel is not powered up proceed to step 5. If the Control Panel is powered up, it must be powered down as follows:
 - a. ADT7AIO/ADT5AIO or WTS700 Touchscreen At the Advanced screen select "System Shutdown" and confirm. Wait 30-60 seconds.
 - b. ADT2X16AIO or WTP100/WLTP100 Touchpad Enter Master Code + # + * + 9. Wait 30-60 seconds.
3. Unplug the power supply.
4. Disconnect the battery.
5. Remove the screw securing the rear case to the front case.
6. Slide the rear case down and separate it from the front case.
7. Remove the communication module access cover.

8. Unplug the power supply (if connected).
9. Secure the module with the provided screw.
10. Re-install the communication module access cover.
11. Connect the battery
12. Install the rear case and secure it with the screw.
13. Plug the power supply into a 24-hour, 110VAC unswitched outlet.

Installing the Module in the ADTHYBWL Series



Ensure that all electrical power is removed from the Control Panel before installing the module. Unplug the power supply and disconnect the backup battery and earth ground.

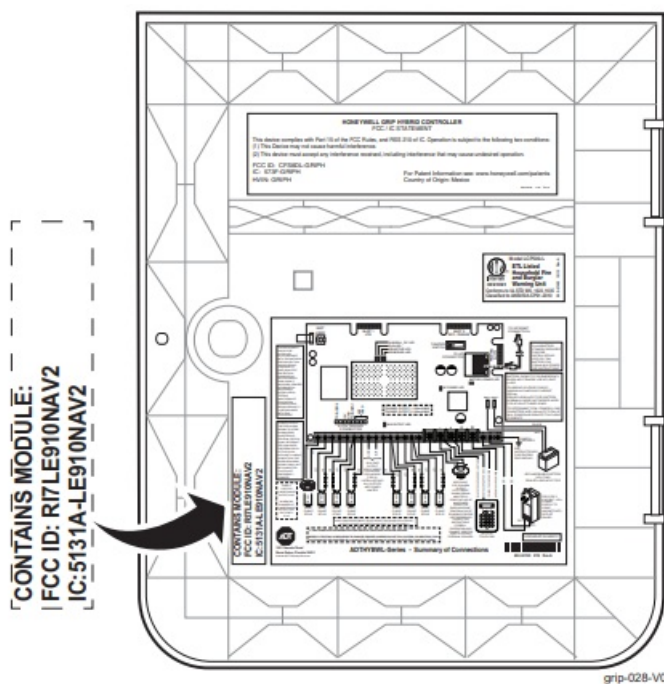


Figure 3. FCC/IC Label Location



Fig

1. Affix the provided FCC/IC label (ADTZWM, P/N 800-24286) on the ADTHYBWL cabinet (refer to Figure 3)
2. If the Control Panel is not powered up proceed to step 5. If the Control Panel is powered up, it must be powered down as follows:
 - a. WTP100/WLTP100 Touchpad – Enter Master Code + # + * + 9. Wait 30-60 seconds.
 - b. WTS700 Touchscreen At the Advanced screen select “System Shutdown” and confirm. Wait 30-60 seconds.
3. Unplug the power supply.
4. Disconnect the battery and earth ground.
5. Install the ADTZWM (ZWAVE) on the edge connector on the PCB (refer to Figure 4). Ensure the receptacle is securely seated on the edge connector.
6. Secure the module with the provided screw.
7. Reconnect the earth ground and battery.

8. Plug the power supply into a 24-hour, 110VAC unswitched outlet.

Programming

Note: The ADTZWM requires a router and internet service for a Wi-Fi connection.

1. Programming associated with the ADTZWM module as well as the inclusion/exclusion of Z-Wave devices is conducted through ADT 3rd Party Services and the Alarm.com MobileTech tool. On a laptop, PC or Smart Device, go to: <https://3ps.adt.com> and <https://alarmadmin.alarm.com/mobile>.

Specifications

Board Dimensions: 1.625" W x 2.625" L x 0.3125" D

Input Voltage Range: 3.6 – 14V, Max 17V

Input Voltage: 3.5V (ADT7AIO, ADT5AIO, ADT2X16AIO) 13.5V (ADTHYBWL)

Current Drain: 250mA (ADT7AIO, ADT5AIO, ADT2X16AIO) 72mA (ADTHYBWL)

Temperature: 32°F (0°C) to 140°F (60°C)

REFER TO THE INSTALLATION AND SETUP GUIDE FOR THE CONTROL WITH WHICH THIS DEVICE IS USED FOR WARRANTY INFORMATION AND THE LIMITATIONS OF THE ENTIRE SYSTEM.

FEDERAL COMMUNICATIONS COMMISSION & ISED STATEMENTS

The user shall not make any changes or modifications to the equipment unless authorized by the Installation Instructions or User's Manual. Unauthorized changes or modifications could void the user's authority to operate the equipment.

FCC CLASS B STATEMENT

This equipment has been tested to FCC requirements and has been found acceptable for use. The FCC requires the following statement for your information:

This equipment generates and uses radiofrequency energy and if not installed and used properly, that is, in strict accordance with the manufacturer's instructions, may cause interference to radio and television reception. It has been type tested and found to comply with the limits for a Class B computing device in accordance with the specifications in Part 15 of FCC Rules, which are designed to provide reasonable protection against such interference in a residential installation. However, there is no guarantee that

interference will not occur in a particular installation. If this equipment does cause interference to radio or television reception, which can be determined by turning the equipment off and on, the user is encouraged to try to correct the interference by one or more of the following measures:

- If using an indoor antenna, replace it with a quality outdoor antenna.
- Reorient the receiving antenna until the interference is reduced or eliminated.
- Move the radio or television receiver away from the receiver/control.
- Move the antenna leads away from any wire running to the receiver/control.
- Plug the receiver/control into a different outlet so that it and the radio or television receiver are on different branch circuits.
- Consult the dealer or an experienced radio/TV technician for help.

Responsible Party / Issuer of Supplier's Declaration of Conformity: Ademco Inc., a subsidiary of Resideo

Technologies, Inc., 2 Corporate Center Dr., Melville, NY 11747, Ph:
516-577-2000.

ISED CLASS B STATEMENT

This Class B digital apparatus complies with Canadian ICES-003.

Cet appareil numérique de la classe B est conforme à la norme NMB-003 du Canada.

FCC / ISED STATEMENT

This device complies with Part 15 of the FCC Rules, and ISED's license-exempt RSS. Operation is subject to the following two conditions: (1) This device may not cause harmful interference (2) This device must accept any interference received, including interference that may cause undesired operation.



RF Exposure Warning

The antenna(s) used for this transmitter must be installed to provide a separation distance of at least 7.8 inches (20 cm) from all persons and must not be co-located or operating in conjunction with any other antenna or transmitter except in accordance with FCC and ISED multi-transmitter product procedures.

Note: The product should not be disposed of with other household waste. Check for the nearest authorized collection centers or authorized recyclers. The correct disposal of end-of-life equipment will help prevent potential negative consequences for the environment and human health.

USE OF THESE PRODUCTS IN COMBINATION WITH NON-HONEYWELL PRODUCTS IN A WIRELESS MESH NETWORK, OR TO ACCESS, MONITOR, OR CONTROL DEVICES IN A WIRELESS MESH NETWORK VIA THE INTERNET OR ANOTHER EXTERNAL WIDE AREA NETWORK, MAY REQUIRE A SEPARATE LICENSE FROM SIPCO, LLC. FOR MORE INFORMATION, CONTACT SIPCO, LLC OR IPCO, LLC AT 8215 ROSWELL RD., BUILDING 900, SUITE 950, ATLANTA, GA 303350, OR AT WWW.SIPCOLLC.COM OR WWW.INTUSIQ.COM

WARRANTY & SUPPORT

For Technical Support, call 1-877-748-7628, option 3

For documentation, call Customer Service at 1-800-238-2727 (1-800-ADT-ASAP).

For the latest warranty information, please go to:

www.resideo.com





800-24197D 3/18 Rev. D

ADT Security Services
1501 Yamato Road
Boca Raton, FL 33431
© 2021 ADT Security Services

Documents / Resources

	ADT ADTZWM Series Wi-Fi and Z-Wave Module [pdf] Installation Guide 8DLWFZWX, CFS8DLWFZWX, ADTZWM, Series Wi-Fi and Z-Wave Module
--	---

References

- [IntusiQ - Apple And Samsung Mobile Phones](#)
- [Smart Home Products and Systems | Resideo](#)
- [Home | Sipco](#)
- [ADT 3PS Login](#)
- [MobileTech](#)

[Manuals+](#).