

ADT Security XPP01 Panic Button Sensor



ADT Security XPP01 Panic Button Sensor User Guide

[Home](#) » [ADT Security](#) » ADT Security XPP01 Panic Button Sensor User Guide 

Contents

- [1 ADT Security XPP01 Panic Button Sensor](#)
- [2 Product Specifications](#)
- [3 Product Usage Instructions](#)
- [4 Panic Button Sensor](#)
- [5 Prepare Panic button Sensor](#)
- [6 Change battery](#)
- [7 Use your Panic Button Sensor](#)
- [8 Documents / Resources](#)
 - [8.1 References](#)
- [9 Related Posts](#)

ADT Security

ADT Security XPP01 Panic Button Sensor



Product Specifications

- **Product Name:** Panic Button Sensor
- **Model Number:** XPP01
- **Mounting Options:** Wristband or Belt Clip
- **Power Source:** Cell Battery

Product Usage Instructions

Mounting the Panic Button Sensor

1. Take the Panic Button Sensor and attach it to your hand wrist or belt clip.
2. Connect the Panic Button Sensor to the panel.

Preparing the Panic Button Sensor

Ensure you have the band bracket and belt clip ready for installation.

Adding Panic Button Sensor to the Panel

To add the Panic Button Sensor to your panel, simply press the button on the sensor and follow the panel's instructions for adding a new device.

Changing the Battery

1. Remove the device from the wristband or belt clip.
2. Unscrew the bracket to access the battery compartment.
3. Remove the old cell battery and replace it with a new one.

Using Your Panic Button Sensor

Add the Panic Button Sensor to your Security Panel. You can wear it on your hand wrist or clip it onto your belt for easy access in case of emergency.

Frequently Asked Questions (FAQ):

Q: How do I know if the Panic Button Sensor is connected to the panel?

- **A:** Once you have connected the Panic Button Sensor to the panel, you may receive a confirmation message or light indicator on the panel.

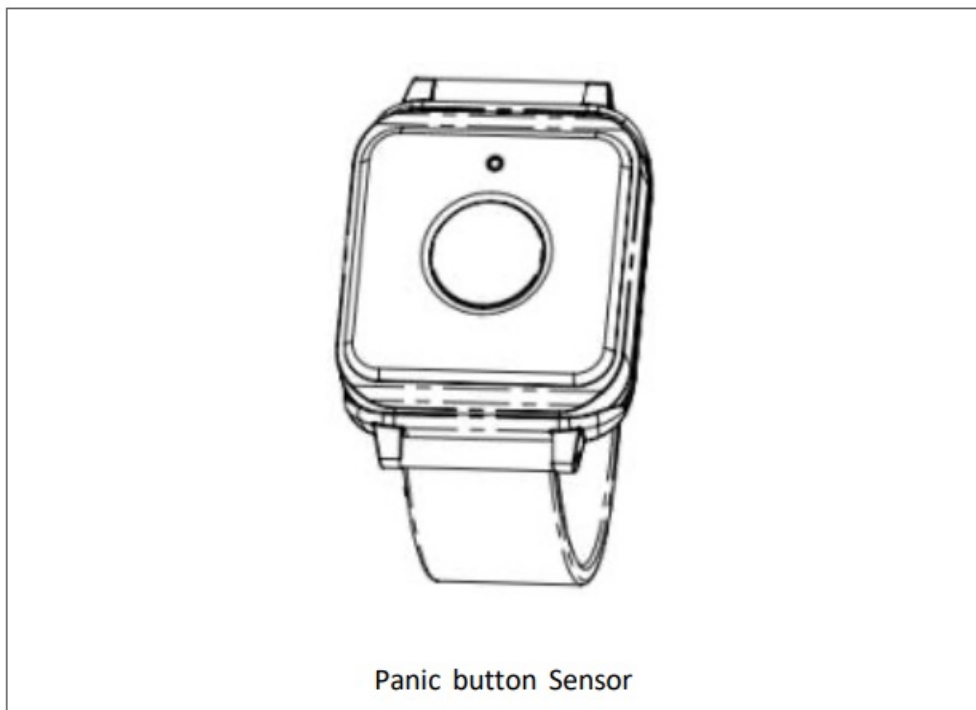
Q: How long does the cell battery typically last before needing replacement?

- **A:** The battery life can vary based on usage, but it is recommended to check and replace the battery annually to ensure optimal performance.

Panic Button Sensor

- The Panic Button Sensor (XPP01) is designed for emergency calls to a monitoring center.
- It communicates with the XP02 Control Panel via 433 MHz frequency.

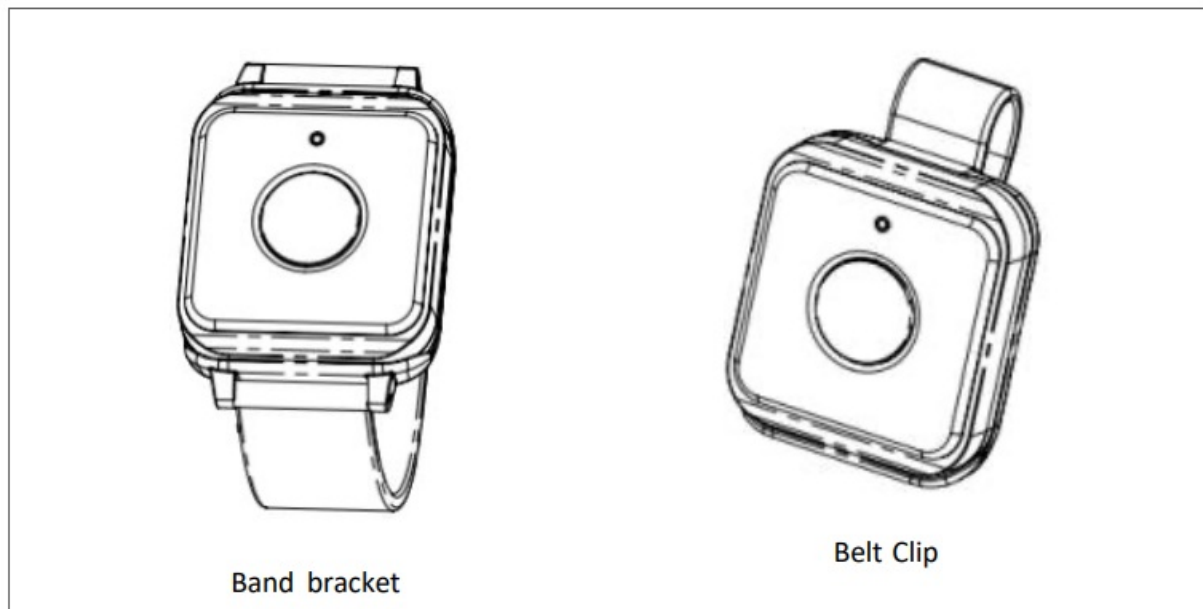
The Panic button Sensor



Your Panic button Sensor has two key steps:

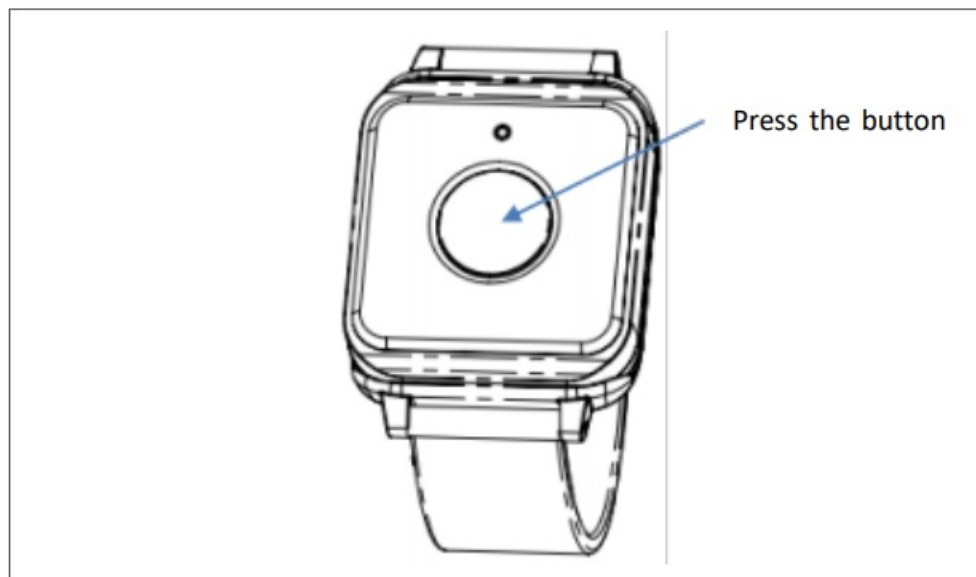
1. Take the Panic button sensor on the hand wrist or belt clip.
2. Connect the Panic button sensor to the panel.

Prepare Panic button Sensor



Add a Panic Button Sensor to your panel

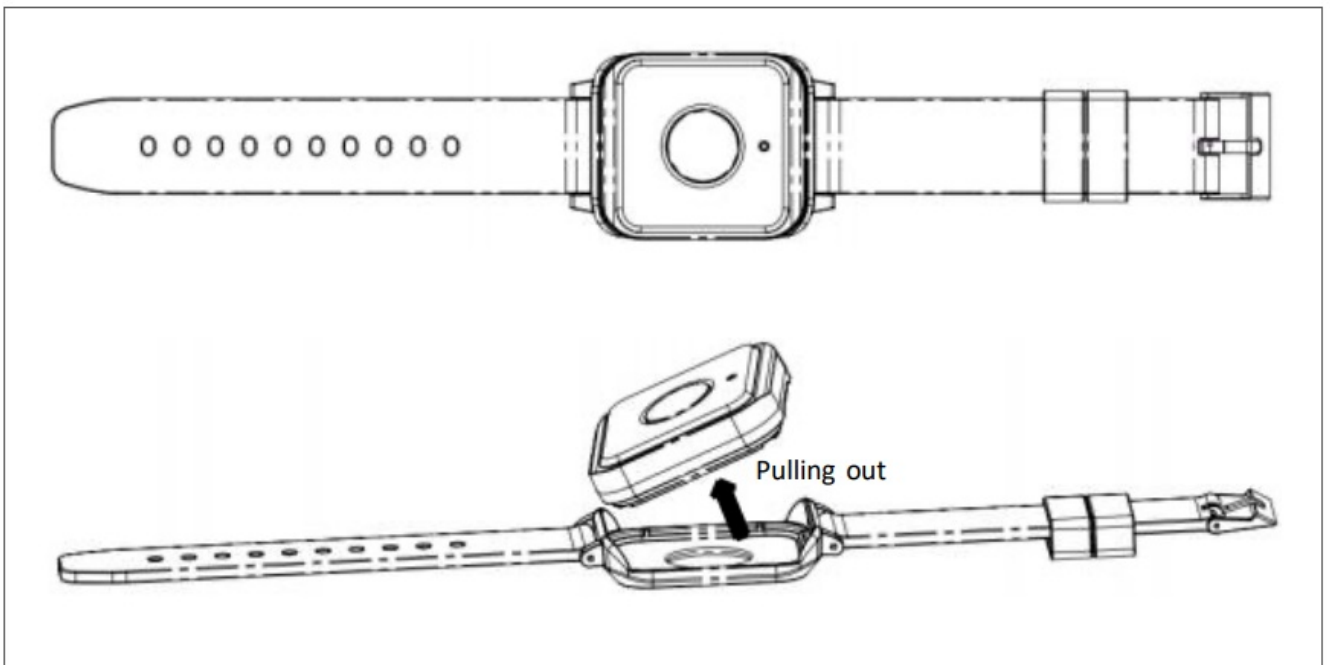
Getting your Panic button Sensor up and running is as simple as pressing the button, and adding it to the panel.



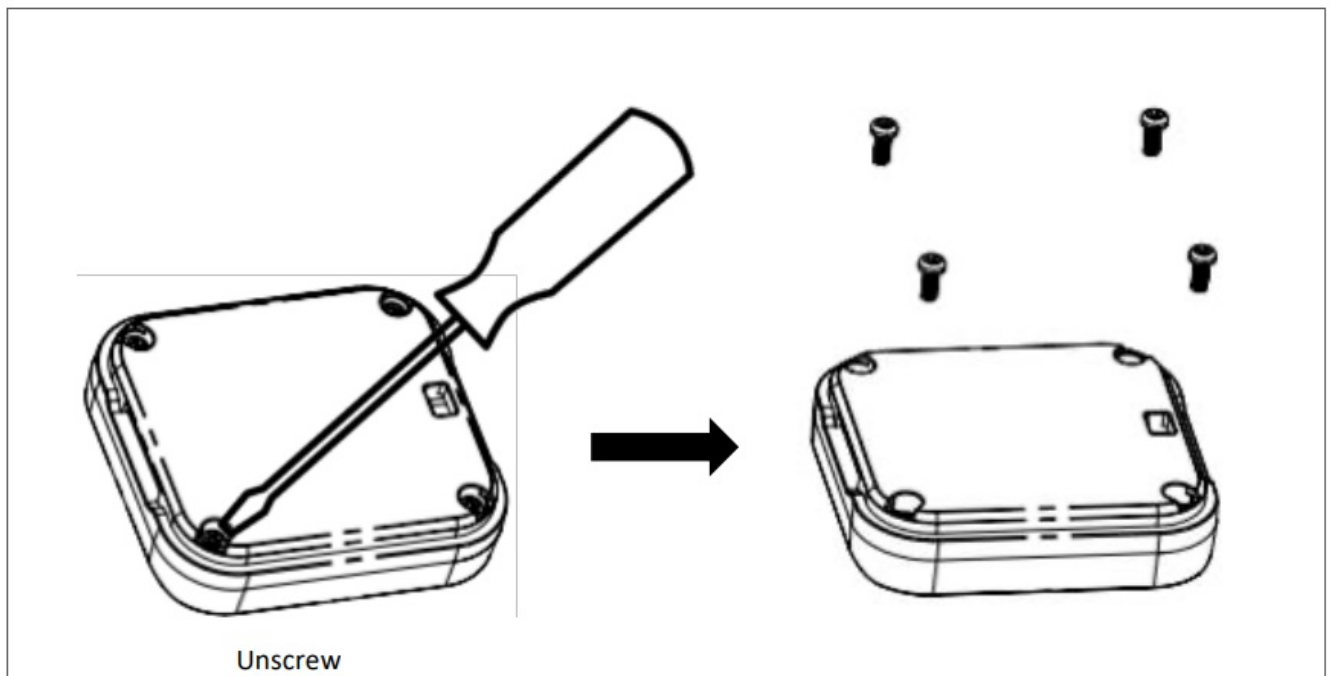
Change battery

Please follow the below process.

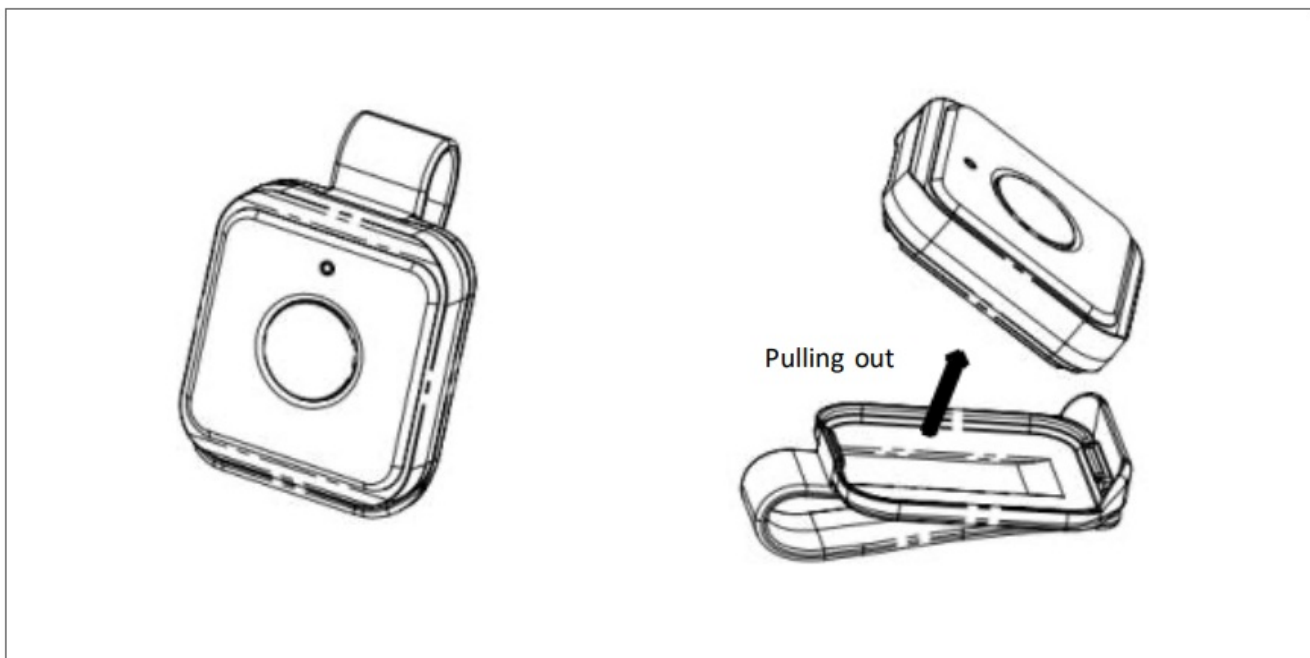
1. Take the device out from the wristband as below picture.



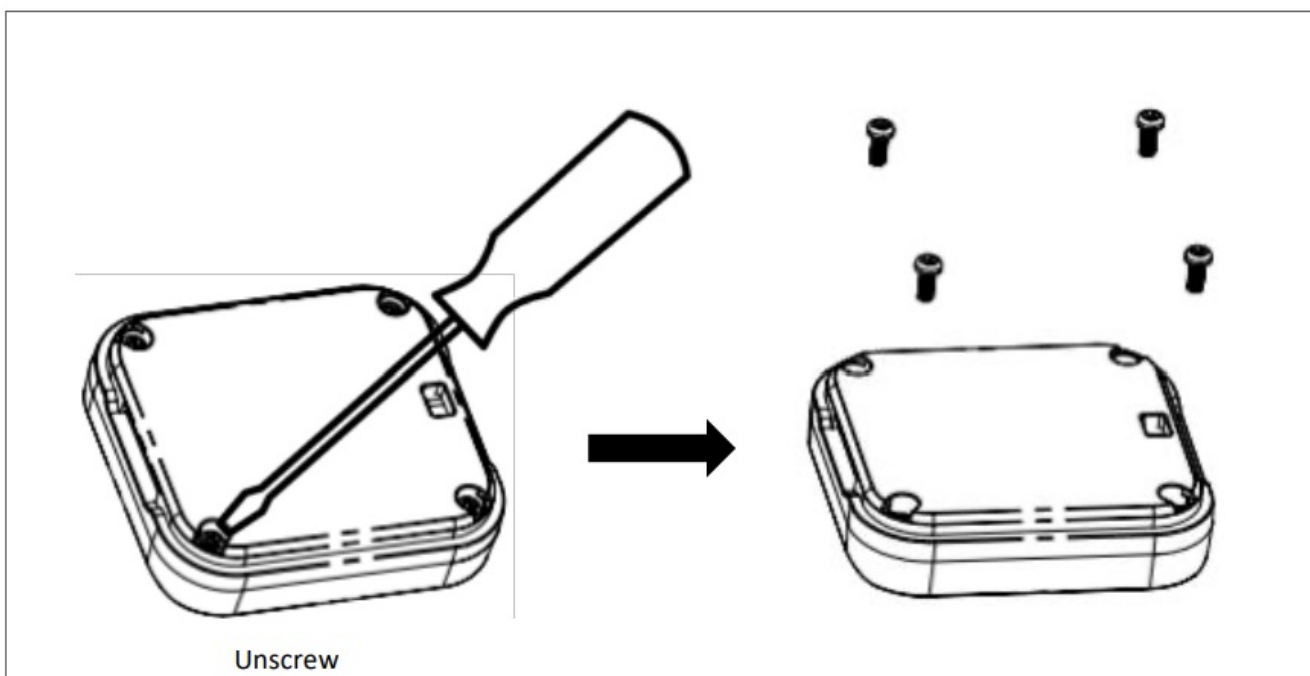
2. Unscrew the bracket as below picture.



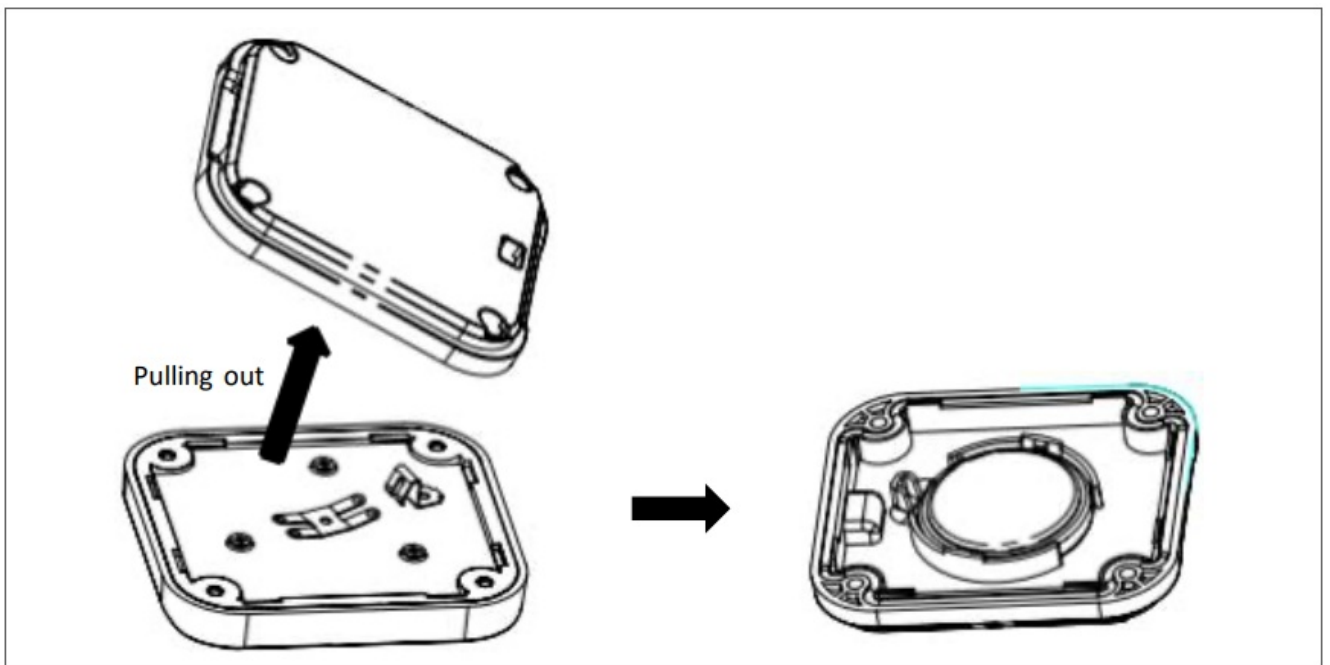
3. Take the device out from the belt clip as below picture.



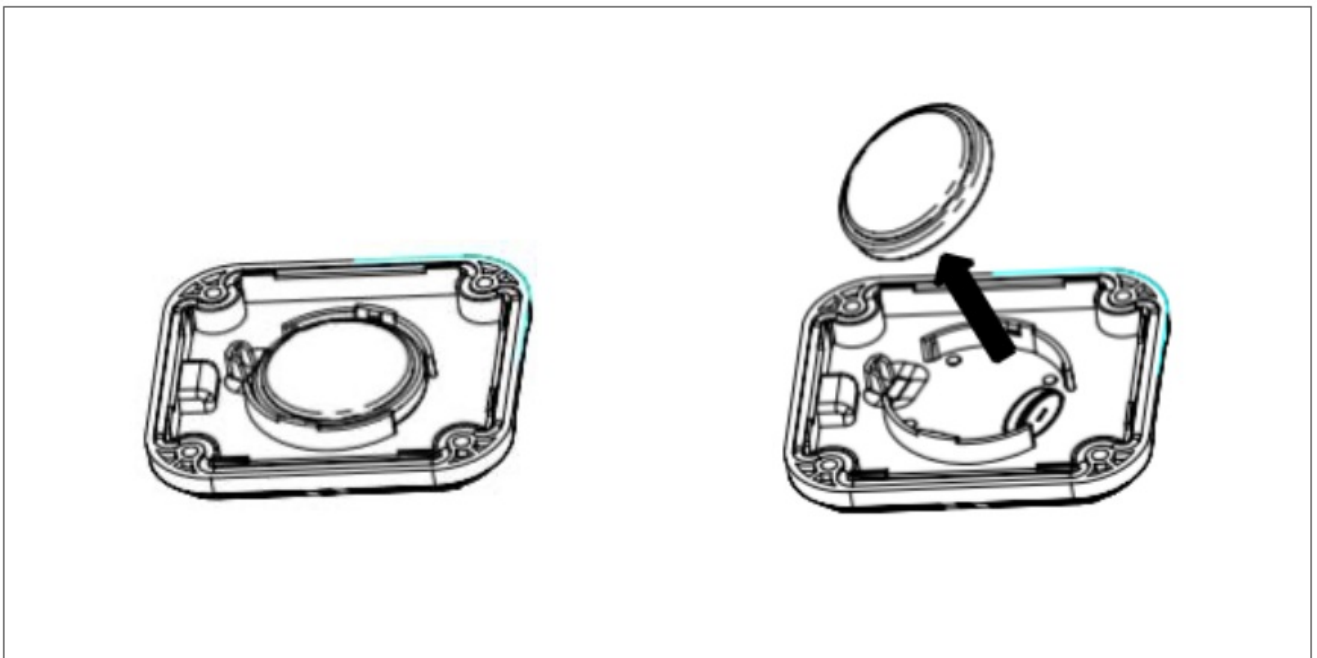
4. Unscrew the bracket as below picture.



5. Take away the rear cover. Pull out the cell battery as below pictures.

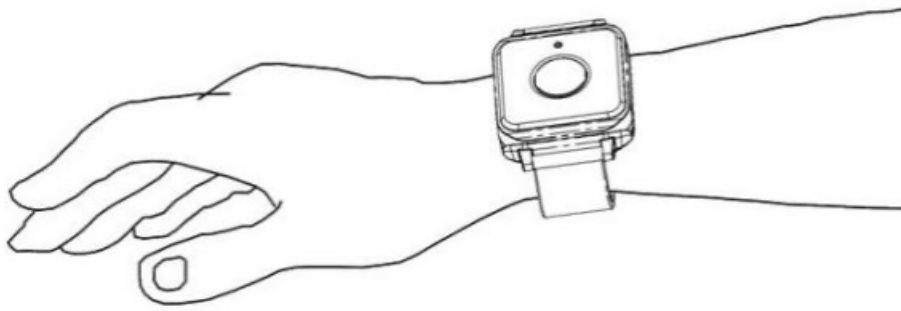


6. Take out the old cell battery and insert a new one as below picture.

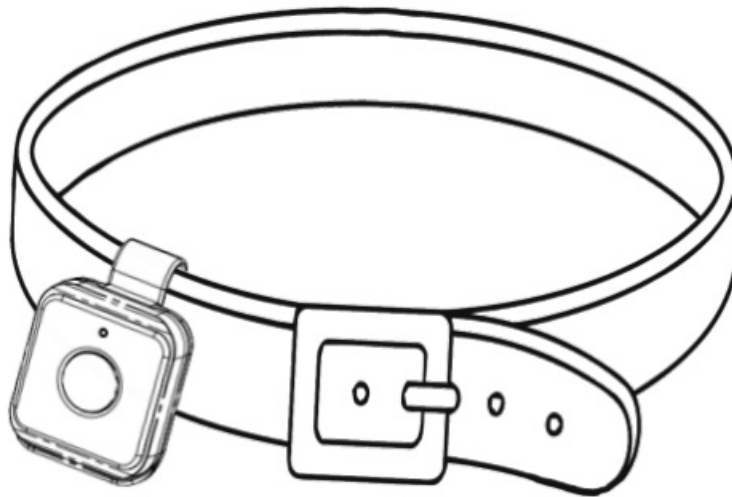


Use your Panic Button Sensor

- Add your Panic Button Sensor to the Security Panel.
- You can wear the Panic Button on your hand wrist or clip it on your belt.
- Please refer to the below picture.




On hand wrist



On belt

Documents / Resources

<p>Panic Button Sensor User Guide (XPP01)</p> 	<p>ADT Security XPP01 Panic Button Sensor [pdf] User Guide XPP01 Panic Button Sensor, XPP01, Panic Button Sensor, Button Sensor, Sensor</p>
---	---

References

- [User Manual](#)

[Manuals+.](#) [Privacy Policy](#)

This website is an independent publication and is neither affiliated with nor endorsed by any of the trademark owners. The "Bluetooth®" word mark and logos are registered trademarks owned by Bluetooth SIG, Inc. The "Wi-Fi®" word mark and logos are registered trademarks owned by the Wi-Fi Alliance. Any use of these marks on this website does not imply any affiliation with or endorsement.