

Contents [[hide](#)]

- [1 ADQ Volta Electronic Code Lock](#)
- [2 Specifications](#)
- [3 Product Usage Instructions](#)
- [4 ASSEMBLY INSTRUCTIONS](#)
- [5 FUNCTIONING OF VOLTA](#)
- [6 FAQs](#)
- [7 Documents / Resources](#)
 - [7.1 References](#)



ADQ Volta Electronic Code Lock



Specifications

- **Brand** Locinox
- **Product** Volta
- **Model:** LNKQ30C1LVCADRSILV
- **Rating**
 - $U = 4.5 \text{ VDC}$
 - $I = 5\text{mA}$
- **Manufacturer:** Ariel Door Gears Ltd.
- **Dimensions:**
 - Single -C1L: 224mm x 60mm (8-13/16" x 2-3/8")
 - Double -C2L: 226mm x 60mm (8-7/8" x 2-3/8")
- **Max. Handle Length:** 400mm (15-3/4")
- **Hex Size:** 6mm and 3mm

Product Usage Instructions

Product Description

The VOLTA door gear system by Ariel Door Gears Ltd. is designed for both single and double door configurations.

Programming

The programming instructions for the VOLTA system can be found in the user manual provided with the product. Follow the steps carefully to set up the system according to your preferences.

Factory Reset Upon Loss of Master Pin

If you lose the master pin, refer to the user manual for instructions on how to perform a factory reset to regain access to the system.

Functioning of VOLTA

The VOLTA system operates smoothly to facilitate the opening and closing of doors. Ensure all components are installed correctly for optimal performance.

Maintenance

Regular maintenance is essential to ensure the VOLTA system functions properly. Clean and lubricate moving parts as recommended in the user manual.

General Information

For any general queries or additional information about the VOLTA system, refer to the manufacturer's website or contact their customer support.

Warranty

Check the warranty details provided by Ariel Door Gears Ltd. to understand the coverage and duration of the warranty for the VOLTA system.

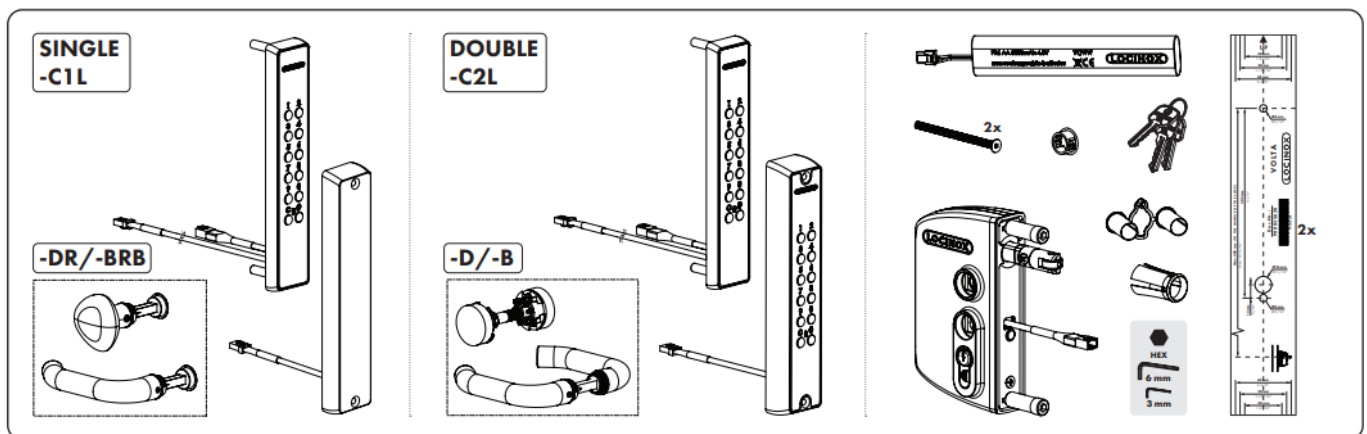
Ariel Door Gears Ltd.

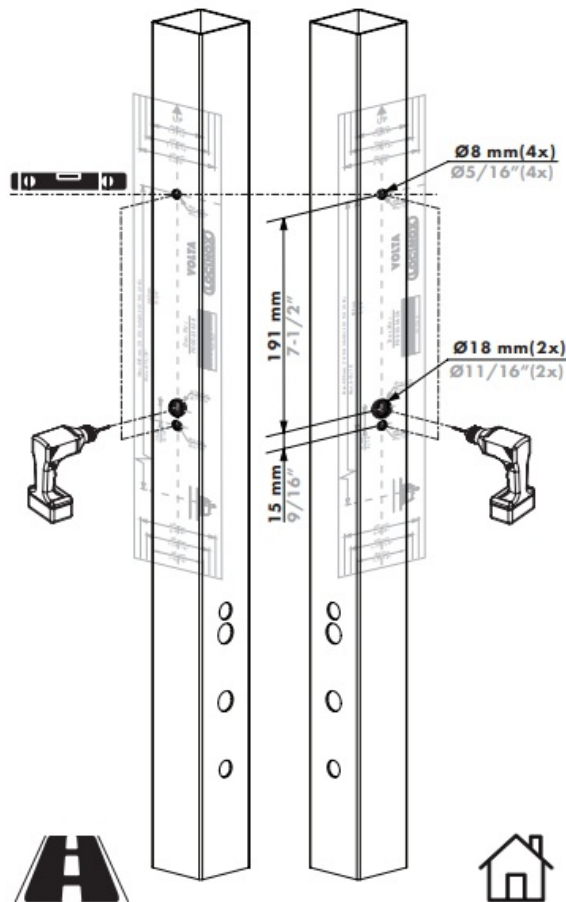
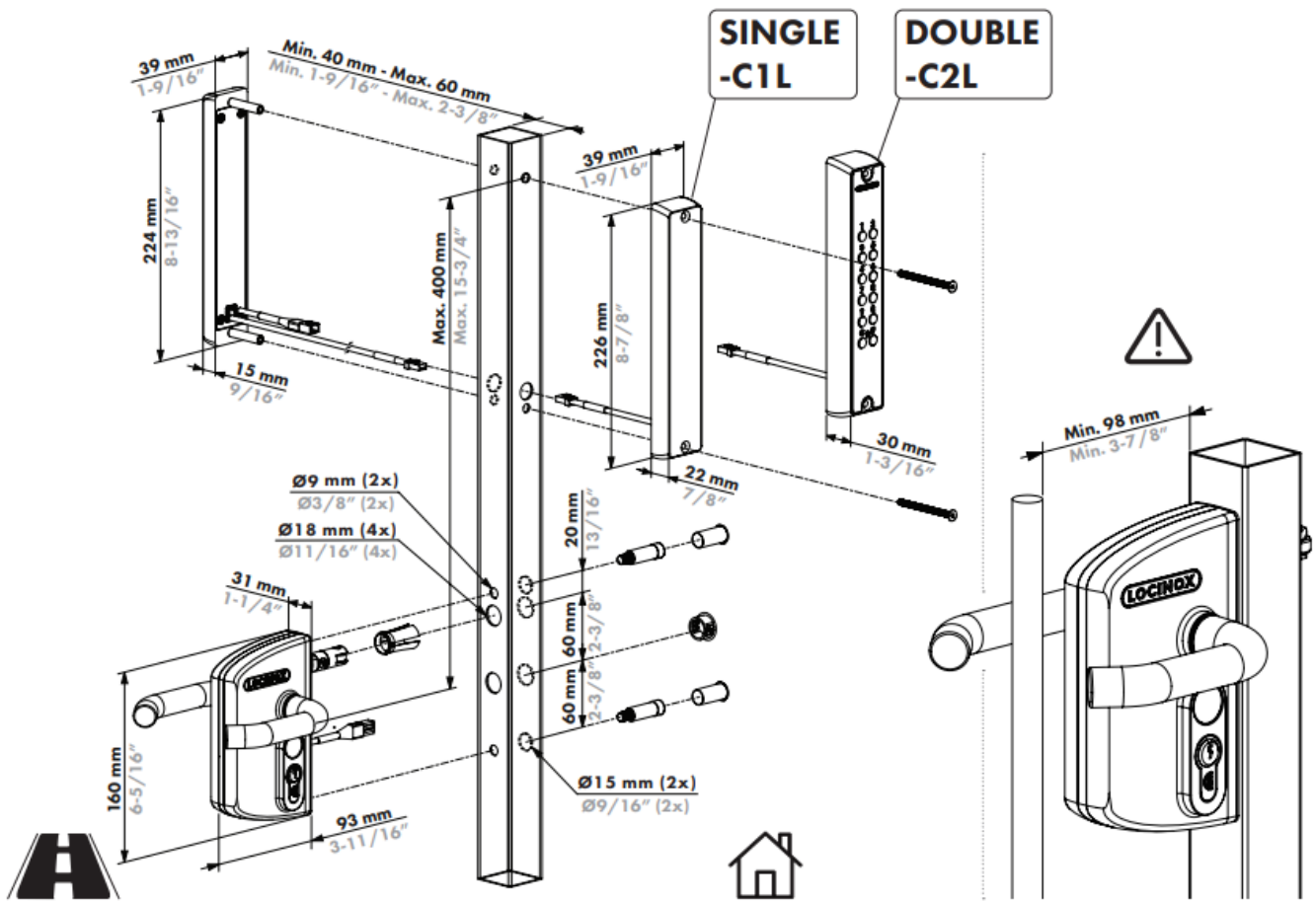
Unit 1A, Dunboyne Business Park, Dunboyne, Co. Meath, A86 W310

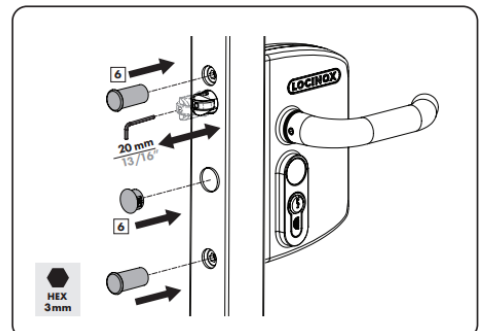
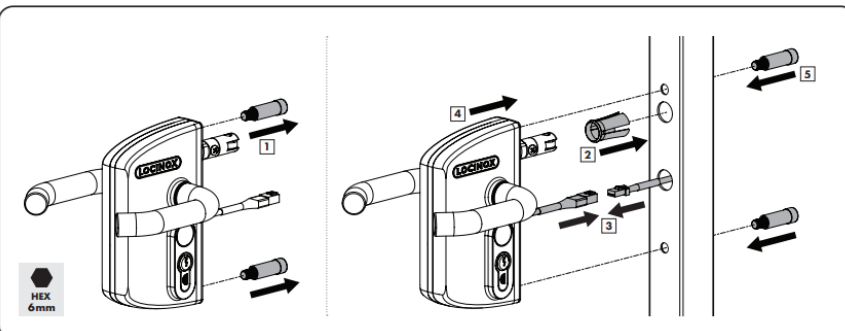
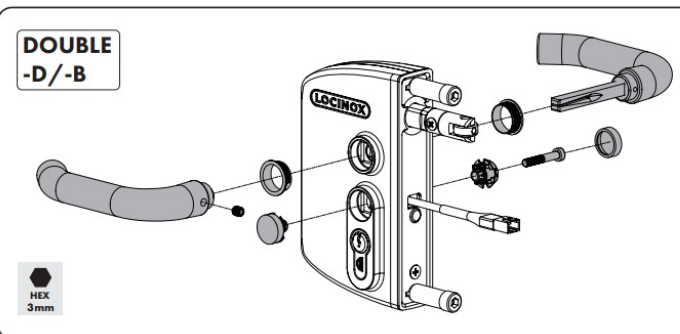
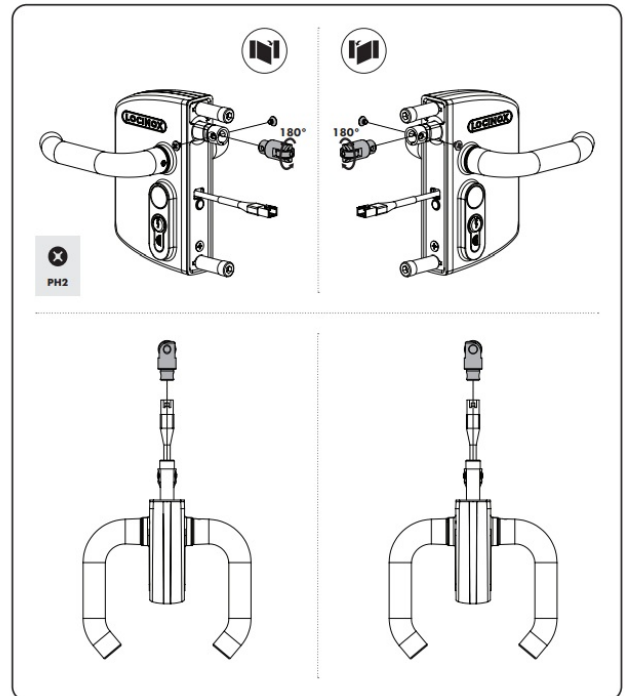
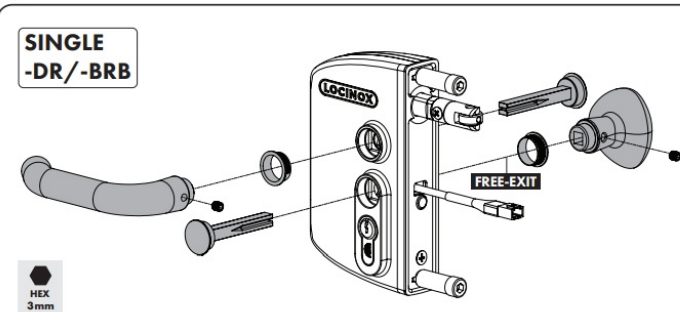
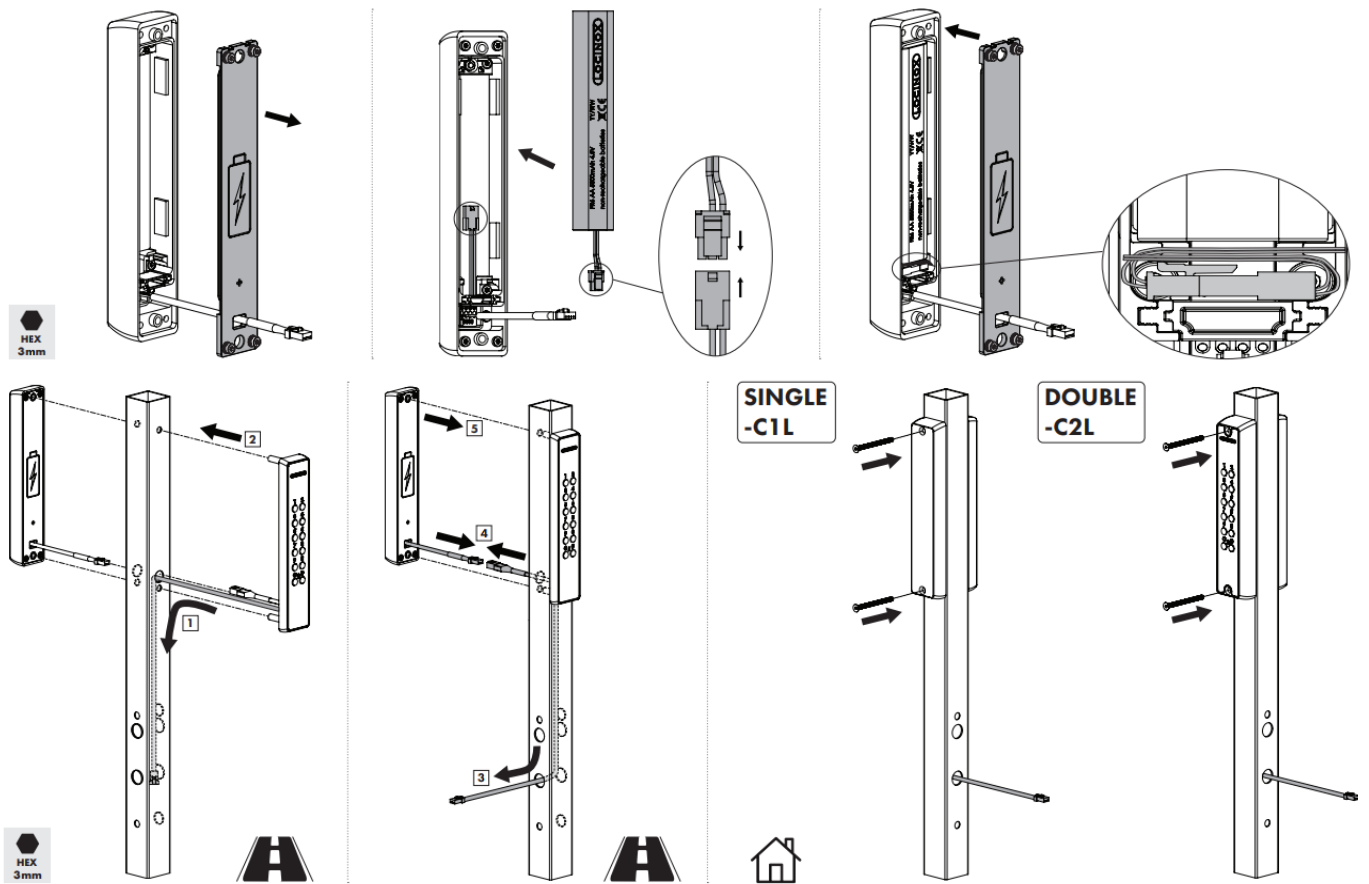
Contact:

- Phone: + 353 1 8333168
- Email: info@adg.ie
- Website: www.adg.ie

ASSEMBLY INSTRUCTIONS







Congratulations on the purchase of your Volta

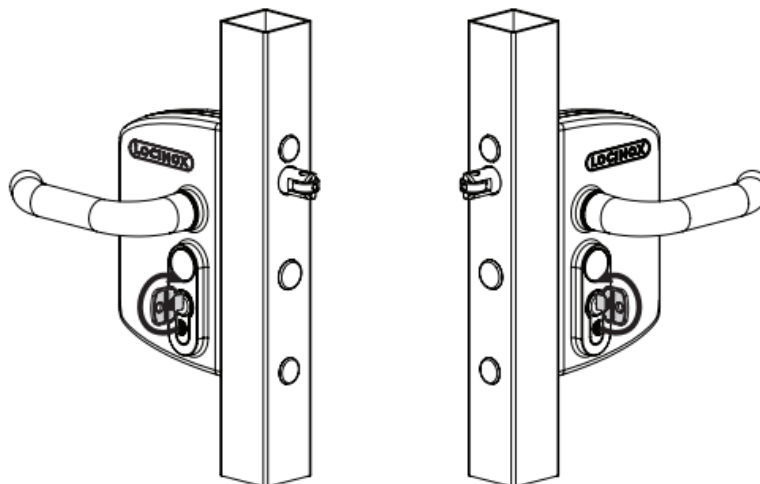
PRODUCT DESCRIPTION

- Volta is a high-quality battery-operated electronic code lock with an aluminium housing. Volta's energy-efficient design makes it very easy to add access control to any gate with a minimal need for maintenance.
- Volta is equipped with a weather-protected illuminated electronic code panel on one or two sides of the gate. Using these code panels, PIN codes can be easily added, modified or removed. Up to 100 codes can be programmed. Different codes can be used for entry and exit, and the system also supports permanently open codes.

PROGRAMMING

ACCESS PROGRAMMING MODE

- Volta offers 2 alternative methods to enter the programming menu: by using the Master PIN code (default value '12345'), or by using the key contact:
- Press [#] for 5 sec, [#] will start flashing
- Either enter the Master PIN code and press [#], or turn and hold the key contact in the locking direction for a seconds



- If a wrong Master PIN is entered, the programming mode ends, and the time-out procedure as described in 4.2 applies

CAUTIONS.

- For safety reasons, we strongly recommend changing the Master PIN upon first use

- If only [#] is lit, you are in the main menu of the programming mode

Select a menu and confirm with [#]. The following menus are available:

- [9] ► setup Master PIN – 2.2
- [1] ► manage PIN codes – 2.3
- [2] ► manage permanently open codes – 2.4
- [3] ► setup switching duration – 2.5
- [4] ► setup free exit mode – 2.6
- [5] ► setup lighting mode – 2.7
- [0] ► factory reset – 2.8
- See the next paragraphs for detailed information

The programming mode ends automatically when there is no activity for 60 seconds

- After selecting a menu, it's possible to return to the main menu by pressing the [C] key
- Press [C] for 5 seconds to exit the programming mode

SETUP MASTER PIN [9]

- Access programming mode (see 2.1)
 - Press [#] for 5 sec, [#] will start flashing
 - Enter the Master PIN code (default = 12345), and press [#]. If correct, [#] will remain lit as long as the programming mode is activated
- Press [9] and confirm with [#]
- [9] and [#] are both lit
- The default Master PIN is 12345. It always has to be a 5-digit code
- Enter a new 5-digit Master PIN and press [#]
- Repeat the previous step to confirm the new Master PIN
- If both codes are equal, all LEDs will light briefly, and you will return to the main menu of the programming mode

MANAGE PIN CODES [1]

- Access programming mode (see 2.1)

- Press [#] for 5 sec, [#] will start flashing
- Enter the Master PIN code (default = 12345), and press [#]. If correct, [#] will remain lit as long as the programming mode is activated



A maximum of 100 different PIN codes can be programmed

- Press [1] and confirm with [#]
- [1] and [#] are both lit
- Enter a new PIN code (4-8 digits) and confirm with [#]
- In case of a new code, the code will need to be repeated and confirmed with [#]
- The lights of buttons [5] and/or [7] indicate on which side of the lock the code is valid. [7] is used for the side the user is currently using, while [5] is used for the other side. The Volta model with a keypad on one side shows only option [7]
- Pressing [5] and/or [7] will deselect (flashing) or select (permanently on) the corresponding side
- Press [#] to confirm
- You will return to the main menu of the programming mode; [#] will remain lit. Press [C] for 5 seconds to exit the programming mode



When two different codes or a wrong code length is entered, all LEDs flash two times, indicating the code setting hasn't been saved. Try again. [1] will remain lit

A code can be removed by deselecting [5] and/or [7] before confirmation

MANAGE PERMANENTLY OPEN CODES [2] PIN codes generated using menu [1] (manage PIN codes) will unlock the lock for a predefined duration, as configured in menu [3] ('setup switching duration'). In contrast, a 'permanently open' code has no predefined duration to remain open, but will remain open until the same code (or another permanently open code) is entered.

- Access programming mode (see 2.1)
 - Press [#] for 5 sec, [#] will start flashing
 - Enter the Master PIN code (default = 12345), and press [#]. If correct, [#] will remain lit as long as the programming mode is activated

- Press [2] and confirm with [#]
- [2] and [#] are both lit
- Enter a new PIN code and confirm with [#]
- In case of a new code, the code will need to be repeated and confirmed with [#]
- The lights of buttons [5] and/or [7] indicate which side of the lock the code is valid. [7] is used for the side the user is currently using, while [5] is used for the other side. The Volta model with a keypad on one side shows only option [7]
- Pressing [5] and/or [7] will deselect (flashing) or select (permanently on) the corresponding side
- Press [#] to confirm
- You will return to the main menu of the programming mode



When two different codes or a wrong code length is entered, all LEDs flash two times, indicating the code setting hasn't been saved. Try again. [2] will remain lit

A code can be removed by ddeselecting[5] and/or [7] before confirmation

SETUP SWITCHING DURATION [3]

- Access programming mode (see 2.1)
 - Press [#] for 5 sec, [#] will start flashing
 - Enter the Master PIN code (default = 12345), and press [#]. If correct, [#] will remain lit as long as the programming mode is activated
- Press [3] and confirm with [#]
- [3] and [#] are both lit
- Enter a value between 1 and 99, and confirm with [#]. When all LEDs flash, your choice is saved
- You will return to the main menu



In case an invalid time is entered, all LEDs flash two times. Menu [3] remains activated

The default time is set at 8 seconds

SETUP FREE EXIT MODE [4] The free-exit mode menu allows configuring a side of the lock in 'free exit mode'. On the free-exit side, entering a PIN code is not required: just pressing any key will unlock the lock for a predefined duration.

- Access programming mode (see 2.1)
 - Press [#] for 5 sec, [#] will start flashing
 - Enter the Master PIN code (default = 12345), and press [#]. If correct, [#] will remain lit as long as the programming mode is activated
- Press [4] and confirm with [#]
- [4] and [#] are both lit
- The lights of button [5] and/or [7] indicate which side of the lock is configured in free exit mode.
- [7] is used for the side the user is currently using, while [5] is used for the other side. The Volta model with a keypad on one side shows only option [7]
- Pressing [5] and/or [7] will deselect (flashing) or select (permanently on) the corresponding side to be configured in free-exit mode
- The selection is confirmed by pressing the [#] key
- You will return to the main menu of the programming mode

The free-exit mode can be disabled by ddeselecting[5] and [7] before confirmation

SET LIGHTING MODE [5]

- Access programming mode (see 2.1)
 - Press [#] for 5 sec, [#] will start flashing
 - Enter the Master PIN code (default = 12345), and press [#]. If correct, [#] will remain lit as long as the programming mode is activated
- Press [5] and confirm with [#]
- [5] and [#] are both lit
- Choose the desired lighting mode:
 1. **Auto dim (default):**
 - During normal operation, backlights are off. As soon as a button is pressed, they go to full brightness. After 5 seconds of inactivity, the lighting is switched off

2. Backlight disabled:

- The backlights will not light up upon pressing a button
- Press [1] or [2] and confirm with [#]. When all LEDs flash, your choice is saved
- You will return to the main menu



In case an invalid number is entered, all LEDs flash two times. Try again. Menu [5] remains activated

FACTORY RESET [0]

- Access programming mode (see 2.1)
 - Press [#] for 5 sec, [#] will start flashing
 - Enter the Master PIN code (default = 12345), and press [#]. If correct, [#] will remain lit as long as the programming mode is activated
- Press [0] and confirm with [#]
- [0] will flash rapidly to indicate that an irreversible action can be taken
- Enter the Master PIN and confirm by holding [#] for 2 seconds
- When all LEDs flash, the factory reset is complete. All settings are restored to default values

RESETTING THE MASTER PIN UPON LOSS OF THE MASTER PIN

During the first 5 minutes after (re)placing the batteries, the default Master PIN (12345) can be used, along with the Master PIN that the user has chosen. Create a new Master PIN code following the steps in 2.2. A factory reset, as described in step 2.8, will permanently return the Master PIN to the default value 12345.

FUNCTIONING OF VOLTA

ENTER A CORRECT PIN CODE

- Enter a PIN code (min. 4 – max. 8 digits)
- Press [#] to confirm
- A light sequence runs from the bottom to the top across the keypad, indicating that a correct code has been entered

ENTER A WRONG CODE

- Enter a wrong PIN
- Press [#] to confirm
- All LEDs flash twice, indicating a wrong code has been entered
- If 5 or more wrong codes are entered consecutively, you won't be able to use the Volta for a certain period due to safety reasons.
- The time-out period is specified as follows:
 - 2[number of failed attempts] seconds
 - For example: 6 failed attempts result in a time-out period of 64 seconds (26 seconds)

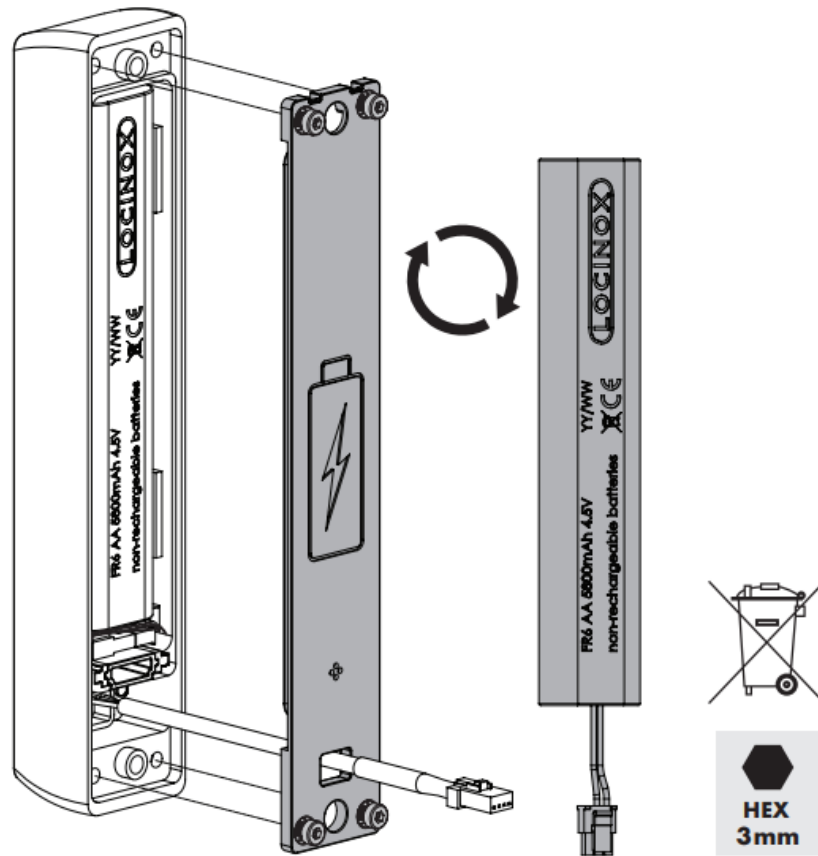
The time-out period is reset when a correct code is entered, or if no new code is entered during 2 hours

LOW BATTERY WARNING

When the batteries start running out, the low battery indicator on the keypad will start flashing when entering a code, indicating that the time has come to replace the batteries.

REPLACE BATTERIES

- Remove the Volta from the gate
- Open the battery lid
- Replace the battery pack
- Close the battery lid
- Mount the Volta module back on the gate



MAINTENANCE


- Clean the housing and display using a soft cloth, moistened with a neutral cleaning agent.
- Never use fuel or chemicals on the device since they might harm the housing.

GENERAL INFORMATION

- Please observe the local regulations on the deposit of packaging material and of appliances no longer in use. Our packaging material is eco-friendly. It can be divided into 2 materials: cardboard (box) and expandable polyester (buffer)
- Your device is made of recyclable materials

WARRANTYA


2-year warranty covers all electronics.

-  Federal Trade Commission rules restrict sending unwanted commercial email messages to computers.



- **Recupel** A discarded device can either be returned to your dealer or sent back to ADG. This product's recycling fee is € 0,2.



-  The WEEE marking on the product indicates that it may not be thrown away together with normal household waste and must be handed over to a designated collection point for the recycling of electrical and electronic waste.



- **CE** As the manufacturer of this product, we guarantee that we have taken all the necessary steps to comply with the current safety requirements for this product.

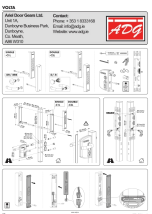
www.adg.ie

FAQs

Q: Where can I find programming instructions for VOLTA?

A: The programming instructions can be found in the user manual under the 'Programming' section.

Documents / Resources

	ADQ Volta Electronic Code Lock [pdf] Instruction Manual SINGLE -C1L, DOUBLE -C2L, -DR--BRB, -D--B, Volta Electronic Code Lock, Volta, Electronic Code Lock, Code Lock
---	--

References

- [User Manual](#)

ADQ

-DR--BRB, ADQ, Code-Lock, d b, DOUBLE -C2L, Electronic Code Lock, SINGLE -C1L, Volta, Volta Electronic Code Lock

Leave a comment

Your email address will not be published. Required fields are marked *

Comment *

Name

Email

Website

☐ Save my name, email, and website in this browser for the next time I comment.

Post Comment

Search:

e.g. whirlpool wrf535swhz

Search

[Manuals+](#) | [Upload](#) | [Deep Search](#) | [Privacy Policy](#) | [@manuals.plus](#) | [YouTube](#)

This website is an independent publication and is neither affiliated with nor endorsed by any of the trademark owners. The "Bluetooth®" word mark and logos are registered trademarks owned by Bluetooth SIG, Inc. The "Wi-Fi®" word mark and logos are registered trademarks owned by the Wi-Fi Alliance. Any use of these marks on this website does not imply any affiliation with or endorsement.