



Adp 12368004M Mainstays Rectangular Open Hamper Instruction Manual

[Home](#) » [ADP](#) » Adp 12368004M Mainstays Rectangular Open Hamper Instruction Manual 

Contents

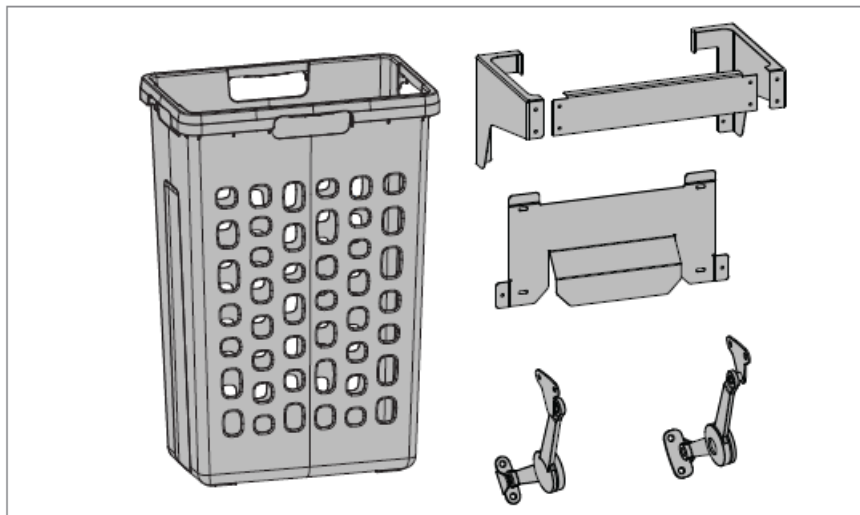
- [1 Adp 12368004M Mainstays Rectangular Open Hamper](#)
- [2 PARTS INCLUDED](#)
- [3 OVERALL DIMENSIONS](#)
- [4 Documents / Resources](#)
- [5 Related Posts](#)



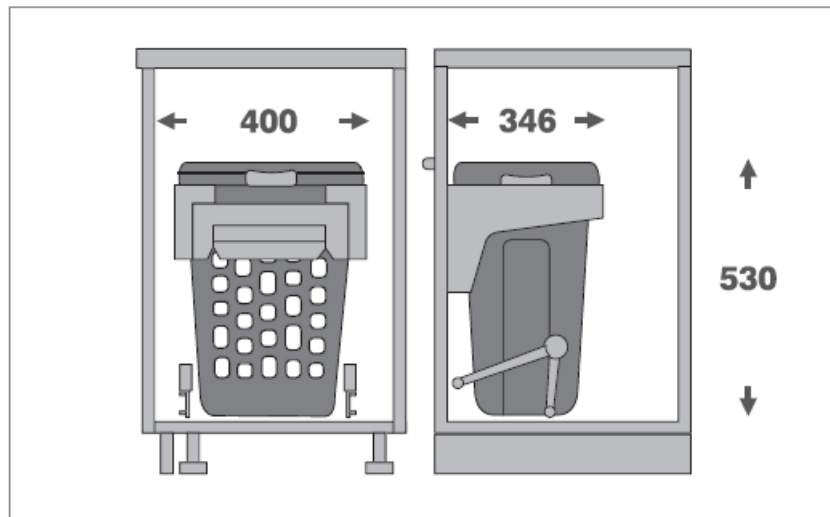
Adp 12368004M Mainstays Rectangular Open Hamper



PARTS INCLUDED



OVERALL DIMENSIONS



BRACKET

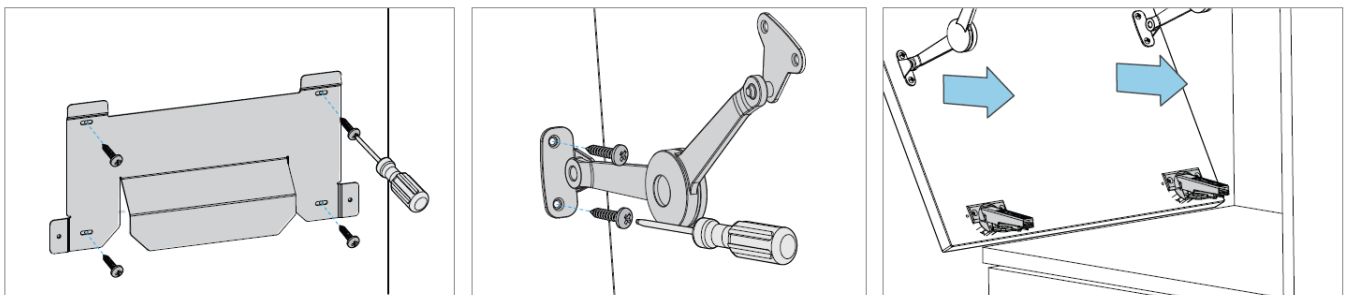
Screw bin tray bracket to the door.

ARMS

Screw both soft close arms to door.

HINGES

Mount the hinges to the door as per the instructions on previous page (page 20).



ADJUSTMENTS

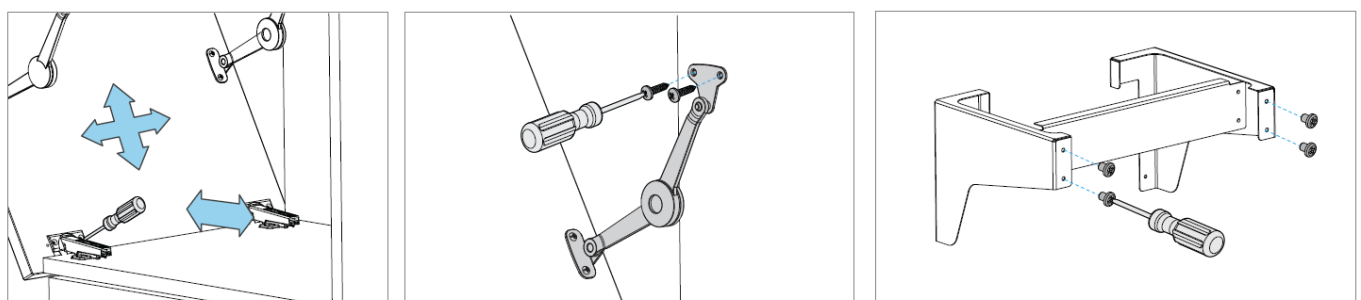
Make door adjustments using the lower hinges

ATTACH ARMS

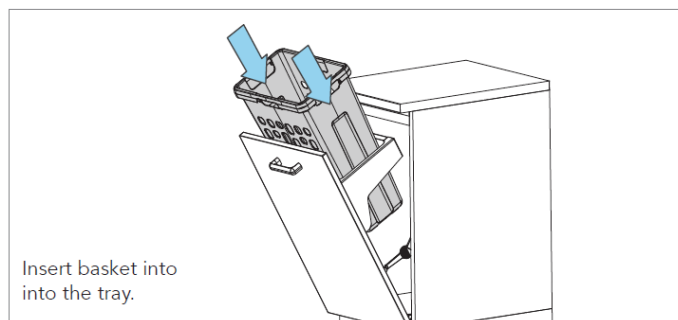
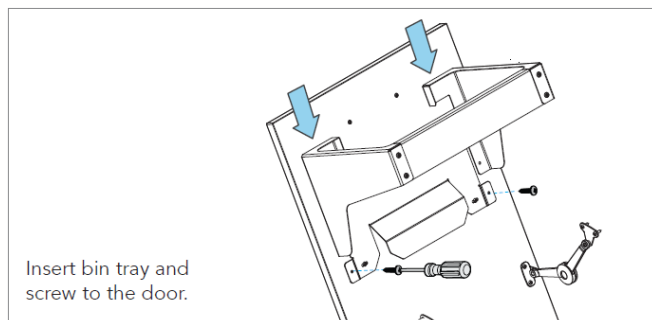
Screw both soft close arms to cabinet.

ASSEMBLY

Assemble bin tray parts.

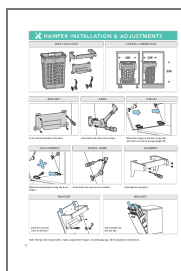


BRACKET



Note: Hamper door adjustments, made using bottom hingers. See lett page (pg. 20) tor adjustment instructions.

Documents / Resources



[Adp 12368004M Mainstays Rectangular Open Hamper](#) [pdf] Instruction Manual
12368004M Mainstays Rectangular Open Hamper, 12368004M, Mainstays Rectangular Open Hamper, Rectangular Open Hamper, Open Hamper, Hamper