



## ADLER CR 9606 Camry Lint Remover User Manual

[Home](#) » [ADLER](#) » ADLER CR 9606 Camry Lint Remover User Manual 

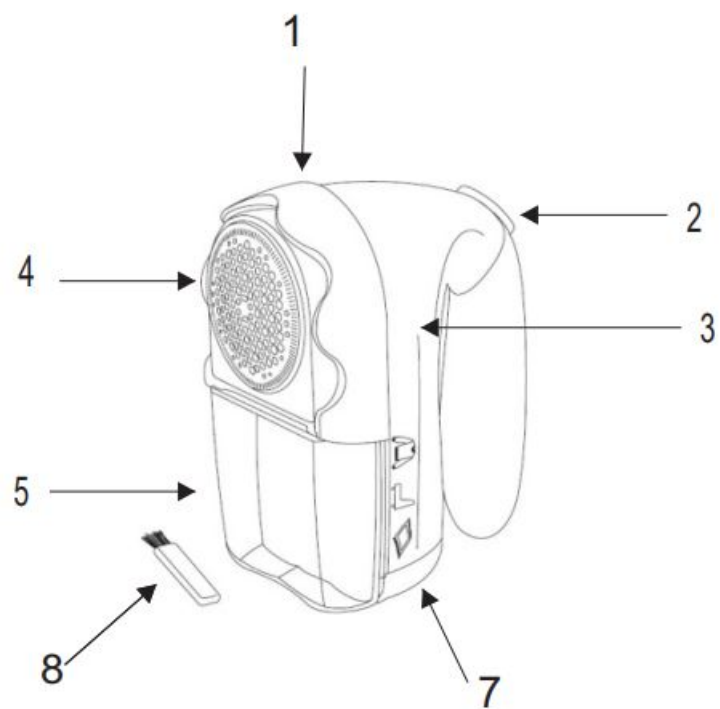
*ADLER CR 9606 Camry Lint Remover User Manual*

**Camry**  
— Premium —

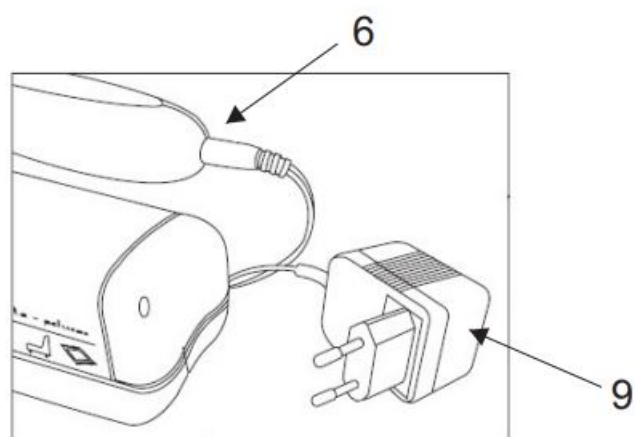


**CR 9606**

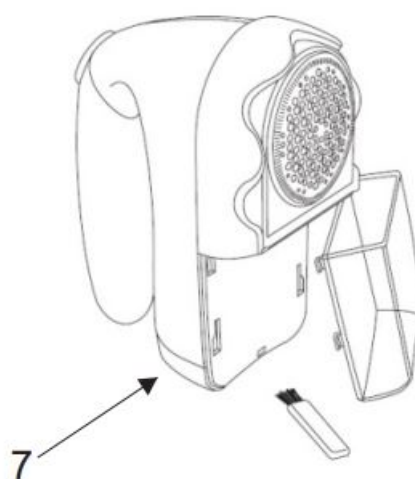
A



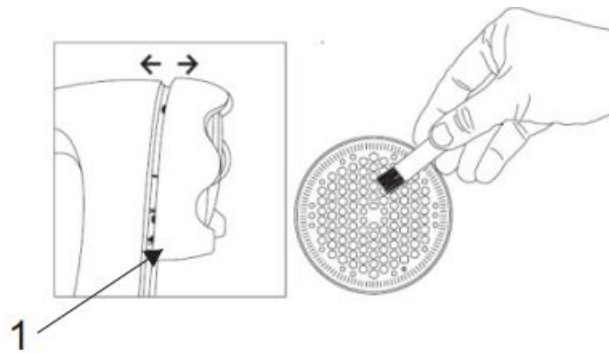
B



C



D



**SAFETY CONDITIONS IMPORTANT INSTRUCTIONS ON SAFETY OF USE PLEASE READ CAREFULLY AND KEEP FOR FUTURE REFERENCE**

The warranty conditions are different, if the device is used for commercial purpose.”

1. Before using the product please read carefully and always comply with the following instructions. The manufacturer is not responsible for any damages due to any misuse.
2. The product is only to be used indoors. Do not use the product for any purpose that is not compatible with its application.
3. The applicable voltage is 220-240V, ~50/60Hz. For safety reasons it is not appropriate to connect multiple devices to one power outlet.
4. Please be cautious when using around children. Do not let the children to play with the product. Do not let children or people who do not know the device to use it without supervision.
5. **WARNING:** This device may be used by children over 8 years of age and persons with reduced physical, sensory or mental capabilities, or persons without experience or knowledge of the device, only under the supervision of a person responsible for their safety, or if they were instructed on the safe use of the device and are aware of the dangers associated with its operation. Children should not play with the device. Cleaning and maintenance of the device should not be carried out by children, unless they are over 8 years of age and these activities are carried out under supervision.
6. After you are finished using the product always remember to gently remove the plug from the power outlet holding the outlet with your hand. Never pull the power cable!!!
7. Never put the power cable, the plug or the whole device into the water. Never expose the product to the atmospheric conditions such as direct sun light or rain, etc.. Never use the product in humid conditions.
8. Periodically check the power cable condition. If the power cable is damaged the product should be turned to a professional service location to be replaced in order to avoid hazardous situations.
9. Never use the product with a damaged power cable or if it was dropped or damaged in any other way or if it does not work properly. Do not try to repair the defected product yourself because it can lead to electric shock. Always turn the damaged device to a professional service location in order to repair it. All the repairs can be done only by authorized service professionals. The repair that was done incorrectly can cause hazardous situations for the user.
10. Never put the product on or close to the hot or warm surfaces or the kitchen appliances like the electric oven or gas burner.
11. Never use the product close to combustibles.
12. Do not let cord hang over edge of counter or touch hot surfaces.
13. Never leave the product connected to the power source without supervision. Even when use is interrupted for a short time, turn it off from the network, unplug the power.

14. In order to provide additional protection, it is recommended to install residue current device (RCD) in the power circuit, with residual current rating not more than 30 mA. Contact professional electrician in this matter.

## Contents

- 1 DETAILED SAFETY CONDITIONS
- 2 DESCRIPTION OF THE DEVICE
- 3 USE OF FABRIC SHOULDER
- 4 CLEANING SHADES FOR FABRICS
- 5 BATTERY CHANGE
- 6 TECHNICAL DATA
- 7 Documents / Resources
- 8 Related Posts

## DETAILED SAFETY CONDITIONS

1. ATTENTION! The blades are very sharp!
2. Exercise caution when opening the bin to not damage it.
3. Do not bend or deform perforated blade protector.
4. Exercise extreme caution when pulling out blades.
5. Wipe the shaver body with dry cloth.
6. The lint bin should be emptied when it is 3/4 full.
7. Deposit on the inner and outer surface of cutting film decreases the shaving efficiency. Clean the film regularly with a brush.
8. Flatten the fabric surface before using the shaver.
9. Do not press the shaver in the clothing, as this may damage the fabric.
10. Do not use the shaver on the clothes that you are wearing, always remove them before using the shaver. Otherwise the body or shaver damage may occur.
11. Always switch the shaver off before plugging in the power adaptor or changing the batteries.
12. The shaver is equipped with a safety lock. The shaver cannot be turned on, if the film is installed improperly or is not properly tightened.
13. Make sure not to use shaver on buttons, zippers, applications, stripes, stickers, labels, abrasions, seams or fasteners.
14. Do not use shaver to remove lint from the silk, wool or linen fabrics. This can damage the fabric as well as the shaver blades.
15. Never use this device close to water, e.g.: Under shower, in bathtub or above sink filled with water.
16. If using the device in bathroom after use remove the power plug from the socket, because water proximity presents risk, even if the device is turned off.
17. Do not allow the device or power adaptor to wet. If the device falls into water, immediately remove the power plug or power adaptor from the socket. If the device is powered, do not put hands in the water. Have the device checked by the qualified electrician before using it again.
18. Do not touch the device or power adaptor with wet hands.
19. The device has to be turned off after every use.
20. Do not leave the device unattended, if it is connected to power socket.
21. In order to provide additional protection, it is recommended to install residue current device (RCD) in the power

circuit, with residual current rating not more than 30 mA. Contact professional electrician in this matter.

## **DESCRIPTION OF THE DEVICE**

1. Shear length regulator
2. Switch
3. Shaver body
4. Blade guard
5. Tassel and lump tank
6. Power socket
7. Battery chamber cover
8. Toothbrush
9. Power supply

## **USE OF FABRIC SHOULDER**

The shaver can be powered from the battery or from the mains.

1. Turn on the shaver.
2. Place clothing (fabric) on a flat surface, smooth wrinkles and move the shaver over the material in the front and back.
3. It is difficult to remove removable knots by shifting the shaver across and then along ("chickened") on the same small fragment of clothing.
4. Thin clothing can be depreciated by folding it into several layers, applying it on a flat, stiff cardboard.
5. For fabrics with a pattern, move the shaver in the direction of the pattern.
6. The shear level can be selected using the length adjuster (1) (D).

## **CLEANING SHADES FOR FABRICS**

1. Turn off the shaver.
2. Remove the shear regulator ring (1) (D)
3. Remove the blade guard (4).
4. Remove the blades (watch out, the blades are very sharp).
5. Clean the blade guard (4) and blades with a brush.
6. Empty the tote and lump tank (5).
7. Fold all disassembled parts in reverse order of disassembly.

## **BATTERY CHANGE**

Open the battery compartment cover (7). Remove the old batteries and insert new ones paying attention to the indicated directions of the poles. Close the battery compartment.

## **TECHNICAL DATA**

Power supply: 220-240V ~50/60Hz

Power: 1,5W

Power supply: 2x LR14



To protect your environment: please separate carton boxes and plastic bags and dispose them in corresponding waste bins. Used appliance should be delivered to the dedicated collecting points due to hazardous components, which may effect the environment. Do not dispose this appliance in the common waste bin.

**camry**  
— Premium —



Retro Radio  
CR 1103



Halogen Oven  
CR 6305



Electric Oven  
CR 6018



Slow Juicer  
CR 4108



Deep Fryer  
CR 4909



Electric Kettle  
CR 1269



Electric Boiler  
CR 1267



Burr Coffee Grinder  
CR 4439



Citrus juicer  
CR 4001



Egg Boiler  
CR 4482



Blender  
CR 4050



Electric Grill  
CR 6609



Mini-fridge  
CR 8062



Personal Blender  
CR 4071



Ice Cube Maker  
CR 8073



Hand blender  
CR 4612



Velocity Fan  
CR 7306



Air Cooler  
CR 7905



Waffle maker  
CR 3025



Hair Clipper  
CR 2821



Portable Cooler  
CR 93



Lint remover  
CR 9606



Blender  
CR 4058



Electric Blanket  
CR 7407



Travel Iron  
CR 5024



Electric Kettle  
CR 1239



Food Slicer  
CR 4702



Trimmer  
CR 2921



Bluetooth Speaker  
CR 1170



Kettle with temp. control  
CR 1289



Hair styler set  
CR 2024



Hair Dryer  
CR 2255

## Documents / Resources

 <p>CR 9606</p>	<p><a href="#">ADLER CR 9606 Camry Lint Remover</a> [pdf] User Manual CR 9606, Camry Lint Remover</p>
--	---