




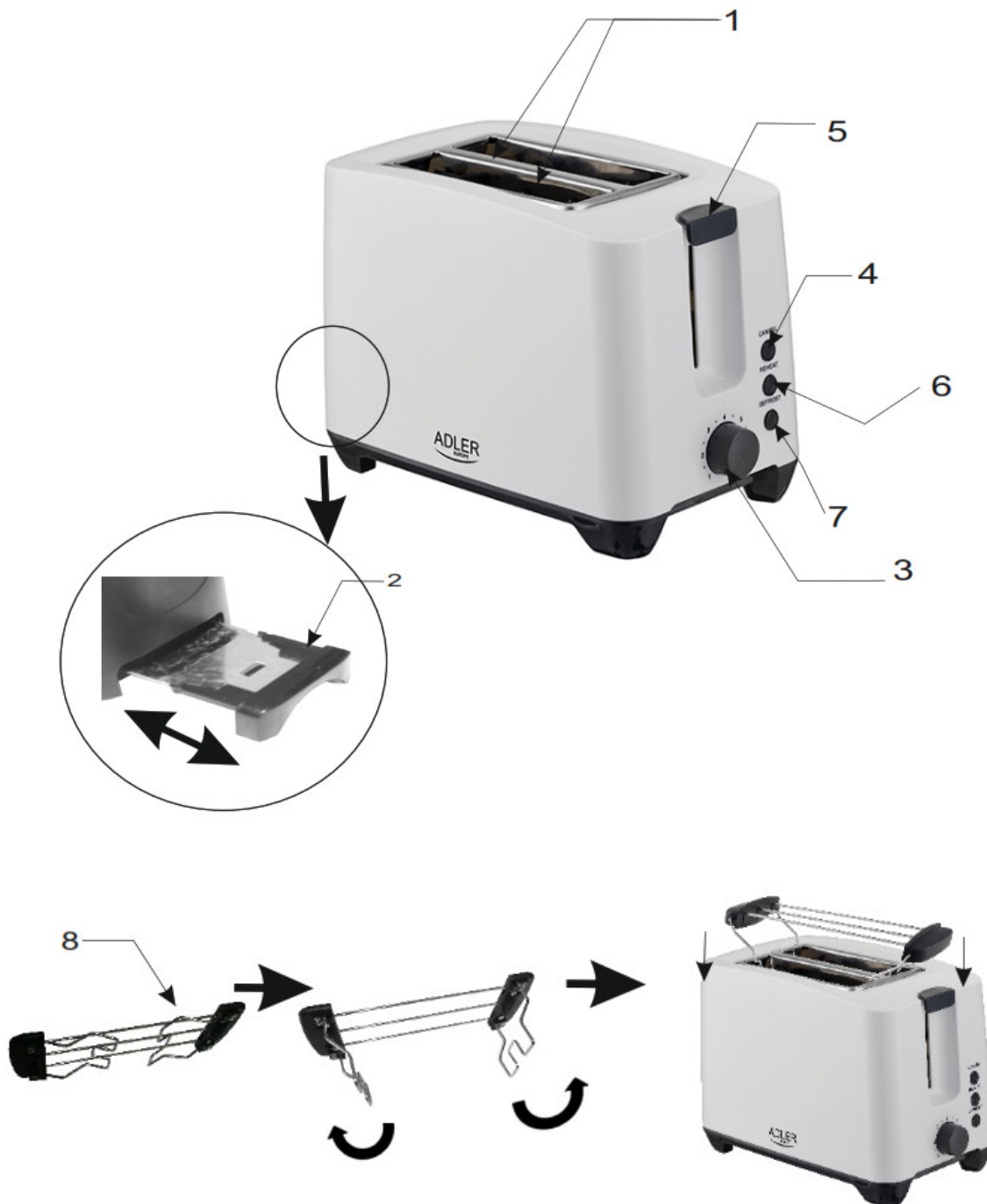
ADLER CR 3216 Toaster 2 slice User Manual

[Home](#) » [ADLER](#) » ADLER CR 3216 Toaster 2 slice User Manual 



CR 3216
User manual






SAFETY CONDITIONS IMPORTANT INSTRUCTIONS ON SAFETY OF USE PLEASE READ CAREFULLY AND KEEP FOR FUTURE REFERENCE

The warranty conditions are different if the device is used for commercial purposes.

1. Before using the product please read carefully and always comply with the following instructions. The manufacturer is not responsible for any damages due to any misuse.
2. The product is only to be used indoors. Do not use the product for any purpose that is not compatible with its application.
3. The applicable voltage is 220-240V~50/60Hz. For safety reasons, it is not appropriate to connect multiple devices to one power outlet.

In order to provide additional protection, it is recommended to install a residue current device (RCD) in the power circuit, with a residual current rating of not more than 30 mA. Contact a professional electrician in this matter.

4. Please be cautious when using around children. Do not let the children play with the product. Do not let children or people who do not know the device use it without supervision.
5. **WARNING:** This device may be used by children over 8 years of age and persons with reduced physical, sensory or mental capabilities, or persons without experience or knowledge of the device, only under the supervision of a person responsible for their safety, or if they were instructed on the safe use of the device and are aware of the dangers associated with its operation. Children should not play with the device. Cleaning and maintenance of the device should not be carried out by children unless they are over 8 years of age and these activities are carried out under supervision.
6. After you are finished using the product always remember to gently remove the plug from the power outlet holding the outlet with your hand. Never pull the power cable!!!
7. Never put the power cable, the plug, or the whole device into the water. Never expose the product to atmospheric conditions such as direct sunlight or rain, etc. Never use the product in humid conditions.
8. Periodically check the power cable condition. If the power cable is damaged the product should be turned to a professional service location to be replaced in order to avoid hazardous situations.
9. Never use the product with a damaged power cable or if it was dropped or damaged in any other way or if it does not work properly. Do not try to repair the defective product yourself because it can lead to electric shock. Always turn the damaged device to a professional service location in order to repair it. All the repairs can be done only by authorized service professionals. The repair that was done incorrectly can cause hazardous situations for the user.
10. Never put the product on or close to the hot or warm surfaces or the kitchen appliances like the electric oven or gas burner.
11. Never use the product close to combustibles.
12. Do not let the cord hang over the edge of a counter or touch hot surfaces.
13. Never leave the product connected to the power source without supervision. Even when use is interrupted for a short time, turn it off from the network, unplug the power.
14. Do not place any objects into browning holes.
15. Do not use a toaster with wet hands.
16. During the operation plastic elements of the device get hot.
ATTENTION: Do not touch metal parts of the housing and browning holes during operation or right after it because they are very hot.
17. In case of blocking toasts in slots and impossibility of automatic release after time's out, unplug the device from mains, wait until cool down, and remove toasts with wooden utensils.
18. The bread may burn, therefore do not use the toaster near or below combustible material such as curtains.
19.  Accessible surface temperatures can be high when the appliance is operating. Never touch the hot surfaces of the appliance.
20. The device is not designed to work with external schedulers or separate remote control systems.
21. Children aged 3 to 8 years old can enable and disable the device only when it is in its normal position of use, they are supervised or instructed on the safe use and understand the resulting risks. Children aged 3 to 8 years old can not connect devices, operate, clean, or maintain.
22. Keep the appliance and its cord out of reach of children less than 8 years.

Contents

- [1 DESCRIPTION OF THE DEVICE](#)
- [2 CLEANING AND MAINTENANCE](#)
- [3 TECHNICAL DATA:](#)
- [4 USING DEVICE](#)
- [5 Documents / Resources](#)
- [6 Related Posts](#)

DESCRIPTION OF THE DEVICE

1. browning holes
2. crumb tray
3. browning level selector knob
4. STOP button
5. lever
6. reheat button
7. defrost button
8. grill

Be sure that the thickness of cut rolls and sausages allows to place them into adequate browning holes (1).

1. Place the toasts into the holes and push the lever (5) down till locked position (locking is possible only if the mains cable is connected with socket outlet).
2. When the toasting cycle has finished, the lever (5) returns to its up position and the toasts spring up at the top of the holes.

WARNING: Products remain hot for a while after the toasting cycle is completed.

3. If products are not browned well, adjust the browning level by turning the knob (3).

WARNING: Pressing the STOP button (4) interrupts the toasting cycle and releases the products.

4. The grill (8) is for heating croissants and rolls that do not fit in the toasting chamber.

WARNING: If you put frozen bread – use Defrost button (7). If you want to reheat bread – use the Reheat button (6).

CLEANING AND MAINTENANCE

1. Before cleaning the device, make sure that it is unplugged. Do not use steam cleaning machines for cleaning.
2. Never immerse the device in water or any other liquids.
3. Smudged toaster's housing clean only with a soft, wet cloth. Do not use abrasive cleaners.
4. Crumb tray (2) should be cleaned regularly.

TECHNICAL DATA:

Voltage: 220-240V ~50/60BEFORE FIRST USE

1. Make sure that the socket-outlet has a suitable ground connection.

- Before using the device for the first time, run it without any products for a few minutes. Turn the browning level selector knob (3) to its max. position
- Push the lever (5) down until it will be blocked. It is normal for it to give off a little smoke at the start.

USING DEVICE

- Set the desired browning level by the knob (3).
- MakHz

Power: 750W / 1000W



To protect your environment: please separate carton boxes and plastic bags and dispose of them in corresponding waste bins. Used appliances should be delivered to the dedicated collecting points due to hazardous components, which may affect the environment. The electrical appliance must be returned in order to reduce its reuse and utilization. If the device contains batteries they should be delivered to dedicated points separately.



**Electric Kettle
AD 08**



**Mixer
AD 4205**



**Food Slicer
AD 4701**



**Water Kettle
AD 1247 NEW**



**Hair Dryer
AD 2220**



**Bagless Vacuum
AD 7036**



**Coffee Grinder
AD 443**



**Nose Trimmer
AD 2911**



**Precision scale
AD 3162**



**Beard Trimmer
AD 2922**



**Pet Hair Clipper
AD 2828**



**Hair Straightener
AD 2318**



**Air Cooler
AD 7913**



**Blender
AD 4067**



**Hair Dryer
AD 2251**



**Led Bathroom Mirror
AD 2168**



Electric Kettle
AD 1225



Electric heating pad
AD 7415



Desktop fan
AD 7303



Waffle Maker
AD 3036



Mini washing machine with spinning function
AD 8051



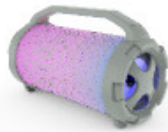
Desk fan 15 cm with clip
AD 7317



Quartz Heater
AD 7709



Food dryer
AD 6654



Bluetooth Speaker
AD 1169



Water Kettle 1,0L
AD 1283



Steam Iron
AD 5032



Electric Oven With HOB
AD 6020



Bending steam mop
AD 7038



Tower Fan
AD 7319



Fan Heater
AD 7717



Air Conditioner
AD 7916



WWW.ADLEREUROPE.EU

Documents / Resources

 <p>ADLER EUROPE</p> <p>CR 3216</p> <p>ADLER CR 3216 Toaster 2 slice</p>	<p>ADLER CR 3216 Toaster 2 slice [pdf] User Manual</p> <p>CR 3216, Toaster 2 slice</p>
---	--