



ADLER AD 4497 Whisk Handle Milk Jug with Control Button User Manual

[Home](#) » [ADLER](#) » ADLER AD 4497 Whisk Handle Milk Jug with Control Button User Manual 

Contents

- [1 ADLER AD 4497 Whisk Handle Milk Jug with Control Button](#)
- [2 SAFETY CONDITIONS](#)
- [3 DESCRIPTION](#)
- [4 INSTRUCTIONS FOR USE](#)
- [5 CLEANING AND MAINTENANCE](#)
- [6 TECHNICAL DATA](#)
- [7 Documents / Resources](#)
- [8 Related Posts](#)



ADLER AD 4497 Whisk Handle Milk Jug with Control Button



SAFETY CONDITIONS

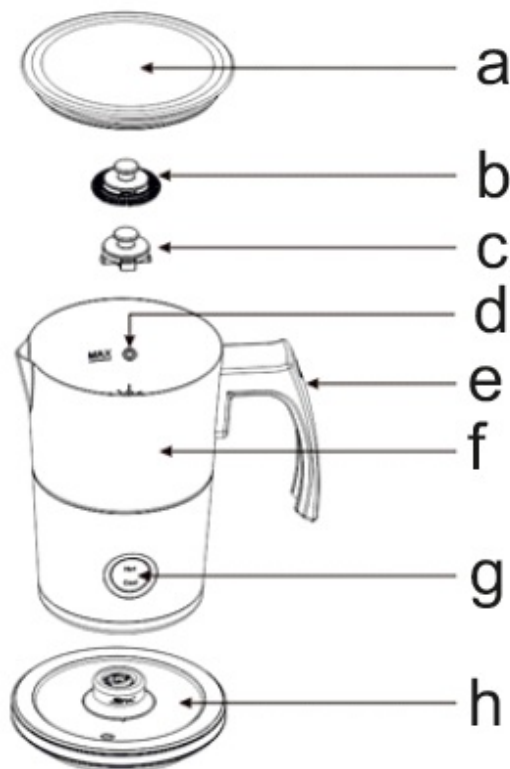
IMPORTANT INSTRUCTIONS ON SAFETY OF USE PLEASE READ CAREFULLY AND KEEP FOR FUTURE REFERENCE

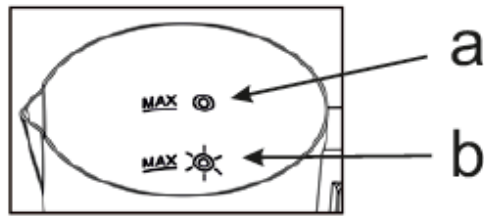
1. The warranty conditions are different, if the device is used for commercial purpose. 1. Before using the product please read carefully and always comply with the following instructions. The manufacturer is not responsible for any damages due to any misuse.
2. The product is only to be used indoors. Do not use the product for any purpose that is not compatible with its application.
3. The applicable voltage is 220-240V ~50/60Hz. For safety reasons it is not appropriate to connect multiple devices to one power outlet.
4. Please be cautious when using around children. Do not let the children to play with the product. Do not let children or people who do not know the device to use it without supervision.
5. **WARNING:** This device may be used by children over 8 years of age and persons with reduced physical, sensory or mental capabilities, or persons without experience or knowledge of the device, only under the supervision of a person responsible for their safety, or if they were instructed on the safe use of the device and are aware of the dangers associated with its operation. Children should not play with the device. Cleaning and maintenance of the device should not be carried out by children, unless they are over 8 years of age and these activities are carried out under supervision.
6. After you are finished using the product always remember to gently remove the plug from the power outlet holding the outlet with your hand. Never pull the power cable!!!
7. Never put the power cable, the plug or the whole device into the water. Never expose the product to the atmospheric conditions such as direct sun light or rain, etc.. Never use the product in humid conditions.
8. Periodically check the power cable condition. If the power cable is damaged the product should be turned to a

professional service location to be replaced in order to avoid hazardous situations.

9. Never use the product with a damaged power cable or if it was dropped or damaged in any other way or if it does not work properly. Do not try to repair the defected product yourself because it can lead to electric shock. Always turn the damaged device to a professional service location in order to repair it. All the repairs can be done only by authorized service professionals. The repair that was done incorrectly can cause hazardous situations for the user.
10. Place the device on a cool, stable, even surface, away from any kitchen appliances that heat up, such as: electric cooker, gas burner, etc.
11. Never use the product close to combustibles.
12. Do not let cord hang over edge of counter.
13. Never leave the product connected to the power source without supervision. Even when use is interrupted for a short time, turn it off from the network, unplug the power.
14. For additional protection, it is advisable to install a residual current device (RCD) in the electrical circuit with a rated residual current not exceeding 30 mA. A specialist electrician should be consulted in this regard.
15. **NOTE:** The milk frother has a heating function. Be very careful while opening the lid and pouring milk in so as to avoid getting burnt.
16. To avoid being splashed with milk or foam (which may be hot), always put the lid on the milk frother before you switch it on.
17. Hold the milk frother by the handle (1e). The pot housing becomes hot during operation.

DESCRIPTION





- a. Lid
- b. Whisk for milk frothing
- c. Whisk for heating milk
- d. Maximum filling level mark
- e. Handle
- f. Milk jug
- g. Control button
- h. Power-based

2. Filling level indicators

- a. MAX level for heating milk (300ml)
- b. MAX level for cold/hot milk frothing (120ml)

INSTRUCTIONS FOR USE

1. Choose the whisk for the desirable effect. Whisk for milk frothing (1b). If you want your milk frothed. Whisk for heating the milk (1c). If you want your milk heated. You can also use this whisk (1c) if you want to prepare hot chocolate.

NOTE: If you have chosen to heat the milk, take off the spring from the whisk.

2. Pour in a portion of milk (preferably 3.2% fat). The milk should cover the whisk (1b or 1c), and reach marked minimum level but not exceed the maximum level mark (1d). Maximum level for milk heating is 300ml (2a) and for milk frothing is 120ml (2b).

NOTE: For best results use cold, fresh milk. Non-dairy milk doesn't froth as well as dairy milk. For best effect use "barista" type plant based milk.

NOTE: Do not exceed the MAX line inside the jug.

3. Put the lid (1a) on the jug and place the jug on the power base (1h).
4. Touch control button once (1g) if you want to heat and froth your milk (with whisk 1b) or if you just want to heat the milk (with whisk 1c). Touch control button twice if you want to get a non-heated frothed milk (only with whisk 1b).
5. The appliance will run until a high temperature of milk is reached. The LED light will flash 10 seconds to indicate the work is done and then go off.
6. To turn off the appliance before the end of the cycle, press the control button (1g) during work.

NOTE: Milk heats to approximately 50-65°C. This temperature ensures the best flavor of the coffee.

CLEANING AND MAINTENANCE

1. Before washing the appliance, make sure it cooled down and is disconnected from the power socket.
2. Always remove the jug from the power base before cleaning.
3. The device should be washed after each use.
4. Clean jug with a soft cloth and washing-up liquid.

IMPORTANT: Do not put milk frother bottom into water. Do not put entire jug into water.

NOTE: The milk frother is non dishwasher-safe.

5. You can also clean the frother by pouring water into it and running it for one cycle (this prevents the whisk from blocking by milk sediments accumulating on the agitator shaft seal).

TECHNICAL DATA

Power supply: 220-240V ~50/60Hz


Power: 600W

Maximum power: 1000W

Capacity: frothed: 120ml / heated: 300ml

symbol 1 Please transfer cardboard packaging to waste paper. Pour the polyethylene bags (PE) into the plastic container Worn device should be returned to the appropriate point storage because it is dangerous in the device ingredients may pose a threat to the environment. The electrical device should be handed over to limit its reuse and use. If in the device there are batteries you have to take out and give to the point stored separately.

Documents / Resources

	<p>ADLER AD 4497 Whisk Handle Milk Jug with Control Button [pdf] User Manual AD 4497, Whisk Handle Milk Jug with Control Button</p>
--	---