

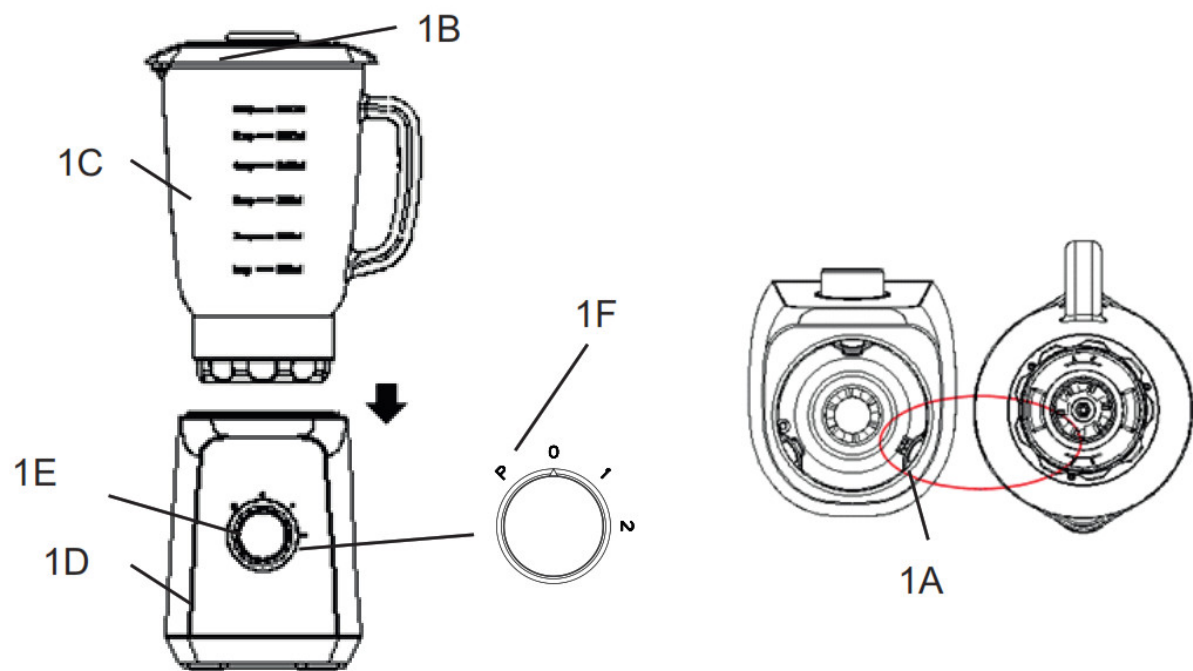


ADLER AD 4076 Crushes Ice Table Blender User Manual

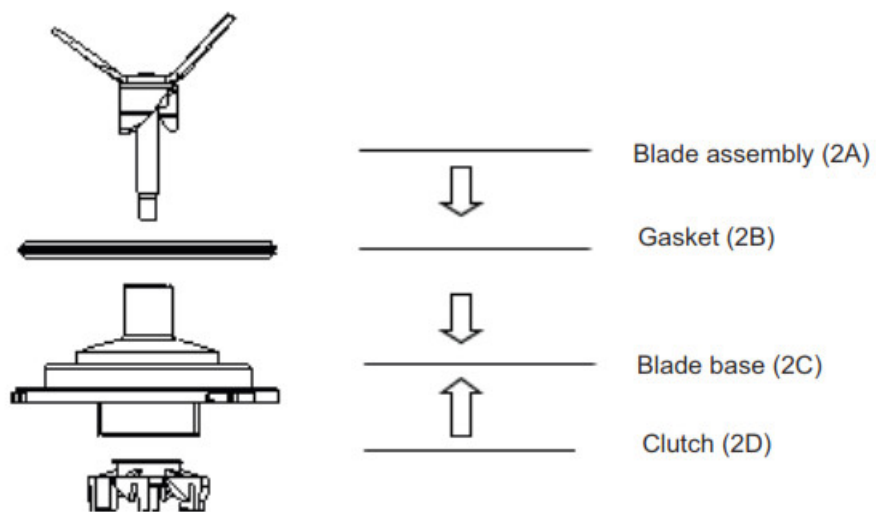
[Home](#) » [ADLER](#) » ADLER AD 4076 Crushes Ice Table Blender User Manual 



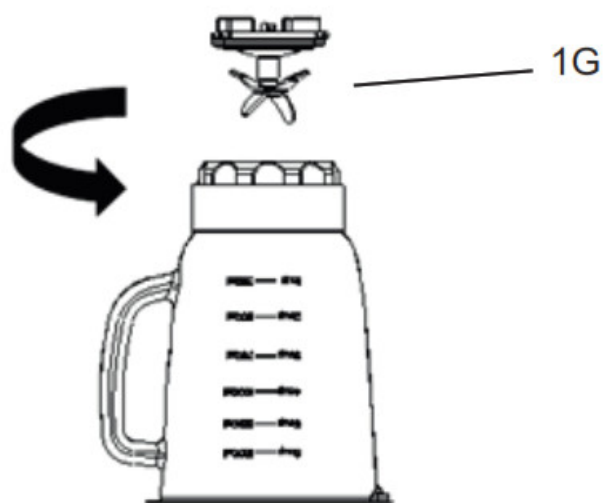
AD 4076
user manual



Picture 1



Picture 2



Picture 3

Contents

- 1 SAFETY CONDITIONS
- 2 DEVICE DESCRIPTION
- 3 DEVICE OPERATION
- 4 ASSEMBLY / DISASSEMBLY
- 5 USEAGE:
- 6 CLEANING AND MAINTENANCE
- 7 TECHNICAL DATA
- 8 Documents / Resources
- 9 Related Posts

SAFETY CONDITIONS

IMPORTANT INSTRUCTIONS ON SAFETY OF USE

PLEASE READ CAREFULLY AND KEEP FOR FUTURE REFERENCE

The warranty conditions are different, if the device is used for commercial purpose.

1. Before using the product please read carefully and always comply with the following instructions. The manufacturer is not responsible for any damages due to any misuse.
2. The product is only to be used indoors. Do not use the product for any purpose that is not compatible with its application.
3. The applicable voltage is 220-240 V, ~50/60Hz. For safety reasons it is not appropriate to connect multiple devices to one power outlet.
4. Please be cautious when using around children. Do not let the children to play with the product. Do not let children or people who do not know the device to use it without supervision.
5. **WARNING:** This device may be used by children over 8 years of age and persons with reduced physical, sensory or mental capabilities, or persons without experience or knowledge of the device, only under the supervision of a person responsible for their safety, or if they were instructed on the safe use of the device and are aware of the dangers associated with its operation. Children should not play with the device. Cleaning and maintenance of the device should not be carried out by children, unless they are over 8 years of age and these activities are carried out under supervision.
6. After you are finished using the product always remember to gently remove the plug from the power outlet holding the outlet with your hand. Never pull the power cable!!!
7. Never leave the product connected to the power source without supervision. Even when use is interrupted for a short time, turn it off from the network, unplug the power.
8. Never put the power cable, the plug or the whole device into the water . Never expose the product to the atmospheric conditions such as direct sun light or rain, etc.. Never use the product in humid conditions.
9. Periodically check the power cable condition. If the power cable is damaged the product should be turned to a professional service location to be replaced in order to avoid hazardous situations.
10. Never use the product with a damaged power cable or if it was dropped or damaged in any other way or if it does not work properly. Do not try to repair the defected product yourself because it can lead to electric shock. Always turn the damaged device to a professional service location in order to repair it. All the repairs can be done only by authorized service professionals. The repair that was done incorrectly can cause hazardous situations for the user.
11. Never put the product on or close to the hot or warm surfaces or the kitchen appliances like the electric oven or

gas burner.

12. Never use the product close to combustibles.
13. Do not let cord hang over edge of counter.
14. Do not immerse the motor unit in water.
15. Always use both hands to carry or move the device. Always remove the cord from the plug prior to carrying or moving the device.
16. Do not insert fingers or any other objects into blender's cup when the blender is on.
17. In order to avoid injuries handle the blades carefully.
18. Watch out for long hair, scarves, neckties hanging above the cup, and operating components of device.
19. For safety reasons use only original accessories and spare parts intended for a particular blender type, available at authorized service centre.
20. Handle the blades with extreme care while disassembling accessories. The blades can cause cuts.
21. Do not wash any blender parts in dishwashers.
22. Change the accessories only when the device is switched off. Disconnect the device from the power.
23. Do not put any products other than food and liquids in the blender cup. Do not put hot products in the cup.
24. The device is not suitable for whipping egg whites, kneading dough or grinding meat.
Don't use aggressive detergents to clean the housing, as it may remove the informational graphic symbols such as: scale, signs, safety marks, etc.
25. Do not start the empty mixing cup, without product inside.
26. MAXIMUM PERIOD OF CONTINUOUS BLENDER OPERATION IS 3 MINUTES. After 3 minutes of continuous operation stop the device and wait couple of minutes before restarting.

DEVICE DESCRIPTION

1A – Interlock switch 1B – Lid 1C – Jug 1D – Main body	1E – Speed adjustment knob 1F – Pulse 1G –Blade base
---	--

DEVICE OPERATION

Before first use:

1. Remove all stickers from the housing, jug and cover of the blender.
2. Wash the jug and the lid in warm water with washing-up liquid, rinse thoroughly, dry the inside and outside of the jug.

ASSEMBLY / DISASSEMBLY

1. Place the blade assembly (2A) and gasket (2B) on the blade base (2C) and next add the clutch (2D) from the bottom, then screw together all parts tightly by turning in the left side until it is firmly in place (Picture 2).
2. Place the jug upside down on a flat, stable surface, and then place the already assembled blade base (1G) to

jug by turning it in the left side until it is firmly in place (Picture 3).

3. Disassemble in reverse order in relation to assembly.

USEAGE:

1. Put the blender main body (1D) on stable, level surface.
2. Make sure the speed adjustment knob (1E) is set to the OFF position.

Knob marking: P – Pulse 0 – OFF	1 – Slower speed 2 – Faster speed
---------------------------------------	--------------------------------------

3. Place the jug (1C) on main body (1D), the interlock switch (1A) will reach correct position to operate. (Picture 1)
4. Remove lid (1B) from the blender jug (1C), put in the ingredients to be mixed. In order to avoid overflow, the level of ingredients in the jug should not exceed $\frac{3}{4}$ of jug's height. Close the lid.
5. Connect the power plug to the power outlet.
6. Turn the device on by pressing Pulse button or by rotating speed adjustment knob (1E) to slower speed or faster speed.

NOTICE: During mixing always hold the jug (1C) with hand.

7. After the mixed products have proper consistence, turn the device off by rotating speed adjustment knob (1E) to off position. Wait until the blades stop. Remove the power plug from the power outlet. Remove the lid.

NOTICE: Do not allow continuous operation of blender for longer than 3 minutes.

NOTICE: The pulsation operation mode, when the Pulse setting is switched, is used for a momentary mixing with maximum speed.

CLEANING AND MAINTENANCE

Make sure that the device is disconnected from the power.

1. Disassemble the jug (1C) from the blade base (1G), next disassemble all parts shown on Picture 2 in reverse order in relation to assembly.
2. Wash the jug, lid and parts shown on Picture 2 in water with washing-up liquid. Rinse thoroughly and dry all parts.
3. Clean the main body (1D) with moist cloth, and then wipe dry.

NOTICE: Don't immerse blender body in water or other liquids.

NOTICE: Do not wash any blender parts in dishwashers.

TECHNICAL DATA

Voltage: 220-240V~50/60Hz

Power: 500W Max. Power: 1000W

Class: II



To protect your environment: please separate carton boxes and plastic bags and dispose them in corresponding waste bins. Used appliance should be delivered to the dedicated collecting points due to hazarsous components, which may effect the environment. Do not dispose this appliance in the

common waste bin.

ADLER

EUROPE



**Electric Kettle
AD 02**



**Espresso Machine
AD 4404**



**Standing Fan
AD 7305**



**Sandwitch maker
AD 3015**



**Heater Fan
AD 77**



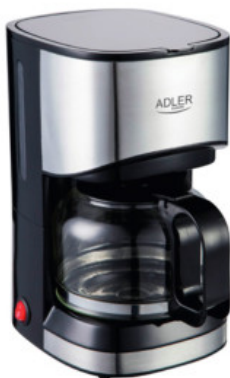
**Oil Heater
AD 7808**



**Hair Clipper
AD 2823**



**Hair Clipper
AD 2825**



Dripp Coffee Maker
AD 14407



Kettle
AD 1286



Hair Dryer
AD 2252



Hair Clipper
AD 2832



Hair Shaver
AD 2932



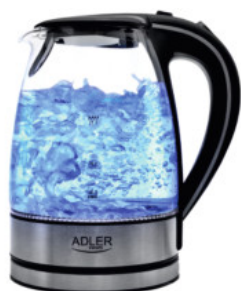
Kitchen Scale
AD 8121



Nut Cookie Maker
AD 3039



Blender
AD 4076



Electric Kettle
AD 1225



Electric heating pad
AD 7415



Desktop fan
AD 7303



Waffle Maker
AD 3036



**Mini washing machine with
spinning function**
AD 8051



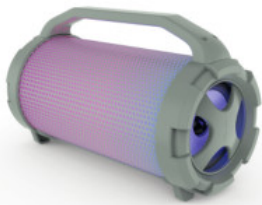
**Desk fan 15 cm with
clip**
AD 7317



Quartz Heater
AD 7709



Food dryer
AD 6654



**Bluetooth Speaker
AD 1169**



**Water Kettle 1,0L
AD 1283**



**Steam Iron
AD 5032**



**Electric Oven With HOB
AD 6020**



**Bending steam mop
AD 7038**



**Tower Fan
AD 7319**



**Fan Heater
AD 7717**



**Air Conditioner
AD 7916**



**Electric Kettle
AD 08**



**Mixer
AD 4205**



**Food Slicer
AD 4701**



**Water Kettle
AD 1247 NEW**



**Hair Dryer
AD 2220**



**Bagless Vacuum
AD 7036**



**Coffee Grinder
AD 443**



**Nose Trimmer
AD 2911**



**Precision scale
AD 3162**



**Beard Trimmer
AD 2922**



**Pet Hair Clipper
AD 2828**



**Hair Straightener
AD 2318**



**Air Cooler
AD 7913**



**Blender
AD 4067**




**Hair Dryer
AD 2251**



**Led Bathroom Mirror
AD 2168**

WWW.ADLEREUROPE.EU

Documents / Resources

 <p>AD 4076</p>	<p>ADLER AD 4076 Crushes Ice Table Blender [pdf] User Manual AD 4076, Crushes Ice Table Blender, AD 4076 Crushes Ice Table Blender, Table Blender, Blender</p>
---	--

[Manuals+](#).