



7968 Diffusors Adler User Manual

[Home](#) » [ADLER](#) » 7968 Diffusors Adler User Manual 

Contents

- [1 7968 Diffusors Adler](#)
- [2 Product Information](#)
- [3 Product Usage Instructions](#)
- [4 GENERAL SAFETY TERMS](#)
- [5 BEFORE FIRST USE](#)
- [6 PRINCIPLE OF OPERATION](#)
- [7 PRODUCT DESCRIPTION](#)
- [8 USEAGE](#)
- [9 ACCIDENTAL LEAK](#)
- [10 DESCALING](#)
- [11 TROUBLESHOOTING](#)
- [12 CLEANING AND MAINTENANCE](#)
- [13 Documents / Resources](#)
 - [13.1 References](#)
- [14 Related Posts](#)



7968 Diffusors Adler



Product Information

The AD7968 Ultrasonic Aroma Diffuser is a device that uses ultrasonic waves to break water and essential oils into fine particles, creating a cold mist that diffuses a fresh aroma. It has a mist outlet, lid, water tank, legs, base, air inlet, atomizer ceramic plate, anti-splash cover, USB cable, MAX water level indicator, power/mist button, backlight button, air outlet, USB port, and a cleaning brush.

Product Usage Instructions

1. To use the aroma diffuser, fill the water tank (C) with water.
2. Add any kind of essential oil/aroma oil/complex oils/fragrance water to the water tank. There are no restrictions on the type of oil to use.
3. Connect the aroma diffuser to a USB power supply using the USB cable (K).
4. To turn on the device, press the power/mist button (N).
5. To control the mist intensity, use the power/mist button (N).
6. To activate the backlight, press the backlight button (O).
7. If the device accidentally tips over while in use, follow these steps:
 1. Turn off the power and unplug the appliance.
 2. Open the lid (B) and pour out all the remaining water from the water tank (C).
 3. Gently shake the device to drain any internal water.
 4. Air dry the device in a safe place for 24 hours.

8. To descale the aroma diffuser:

1. If there is limescale deposited in the diffuser, add white vinegar to the water in the tank.
2. Leave the mixture for 20 minutes to dissolve the limescale.
3. Rinse the tank with water and wipe off any remaining water with a soft cloth. Do not use strong cleaning agents.

GENERAL SAFETY TERMS

IMPORTANT SAFETY INSTRUCTIONS READ CAREFULLY AND KEEP FOR FUTURE REFERENCE

1. Before using the device, read the user manual and follow the instructions contained therein. The manufacturer is not liable for damage caused by using the device contrary to its intended use or improper operation.
2. The device is for home use only. Do not use it for other purposes that are inconsistent with its intended use.
3. The device should only be connected to a 5V USB port.
4. Be especially careful when using the device when children are around. Do not allow children to play with the device and do not allow children or people unfamiliar with the device to use it.
5. **WARNING:** This equipment can be used by children over 8 years of age and persons with limited physical, sensory or mental abilities, or persons without experience or knowledge of the equipment, if it is carried out under the supervision of a person responsible for their safety or they have been given instructions on the safe use of the device and are aware of the dangers associated with its use. Children should not play with the equipment. Cleaning and user maintenance should not be performed by children, unless they are over 8 years of age and are supervised.
6. Always remove the plug from the power outlet after use.
7. Do not immerse the cord, plug or the entire device in water or any other liquid. Do not expose the device to weather conditions (rain, sun, etc.) or use it in high humidity conditions (bathrooms, damp mobile homes).
8. Periodically check the condition of the power cord. If the power cord is damaged, it should be replaced by a specialist repair facility in order to avoid a hazard.
9. Do not use the appliance with a damaged power cord or if it has been dropped or damaged in any other way or is not working properly. Do not repair the device yourself, as it may cause electric shock. Return the damaged device to the appropriate service center for inspection or repair. Any repairs may only be made by authorized service points. Improperly performed repair may result in serious danger to the user.
10. Place the appliance on a cool, stable, level surface, away from heating appliances such as an electric cooker, gas burner, etc.
11. Do not use the device near flammable materials.
12. Do not leave the device switched on unattended.
13. It is forbidden to insert fingers or any other objects into openings in the device casing.
14. Do not cover the discharge opening.
15. After finishing work, empty the device of water before storing it away.
16. Do not move the device when there is water in the internal tank.
17. Do not place any objects on the device.
18. The device should only be used with recommended fragrances. The use of other substances may result in a toxic or fire hazard.
19. The device may only be used with efficient ventilation.

BEFORE FIRST USE

1. Keep in mind that high humidity levels can encourage the growth of biological organisms in the environment.
2. Do not allow the area around the device to become damp or wet. If moisture occurs, lower (reduce) the mist output. Do not allow absorbent materials such as carpets, curtains, tablecloths to get wet.
3. Place this device on a level surface. Do not place this product on a carpet, rug or other uneven place.
4. Do not place the device near electrical devices such as TV or sound equipment, etc. Do not let it spray directly on furniture, clothes or walls, etc.

PRINCIPLE OF OPERATION

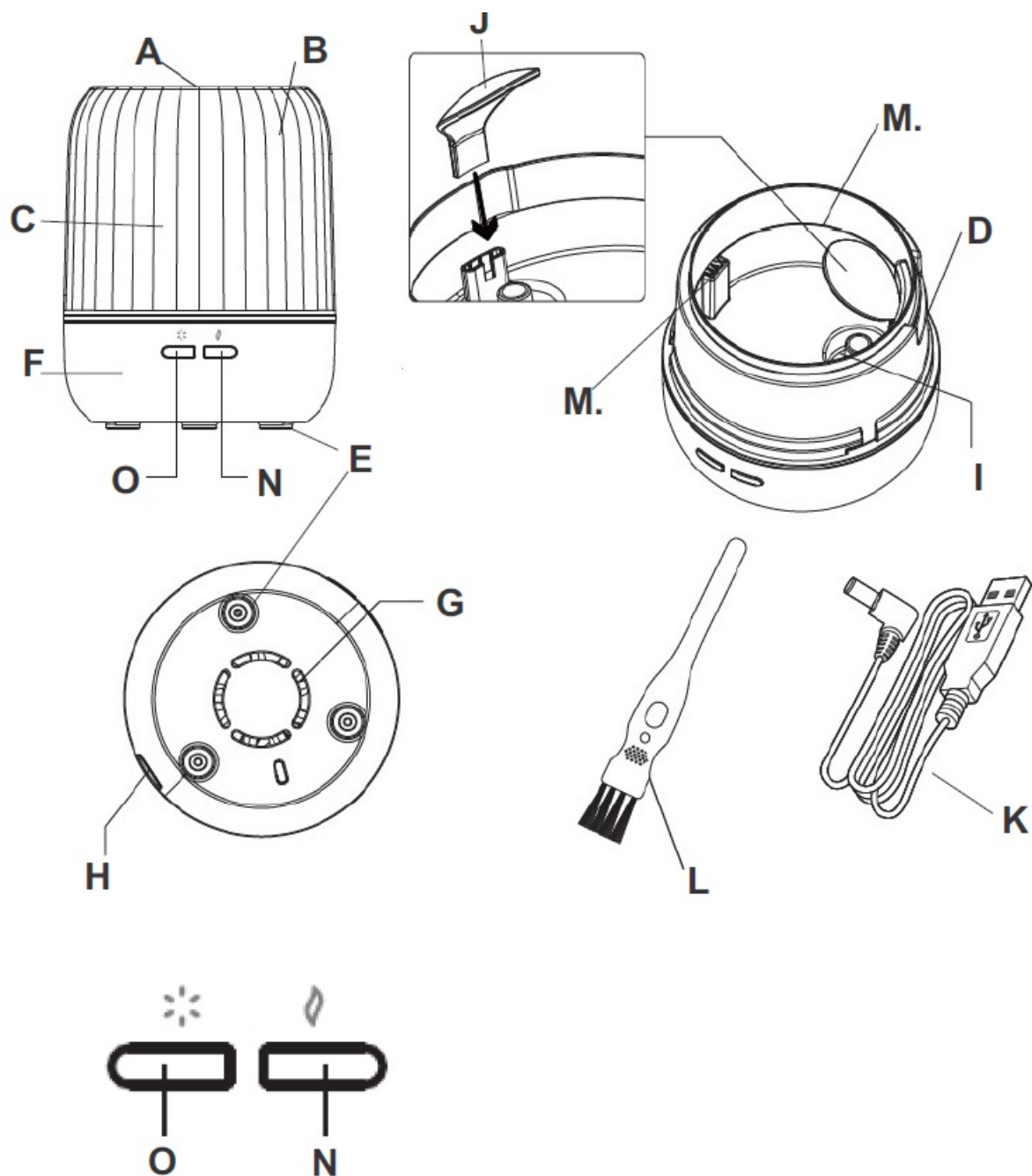
Through the ultrasonic wave, the diffuser breaks the water and essential oil into fine particles, the resulting cold mist diffuses the fresh aroma.

WHICH OIL TO CHOOSE?

This aroma diffuser requires the use of water. There is no restriction on what kind of oil to add to the water, both essential oil/aroma oil/complex oils/fragrance water are suitable for use.

PRODUCT DESCRIPTION

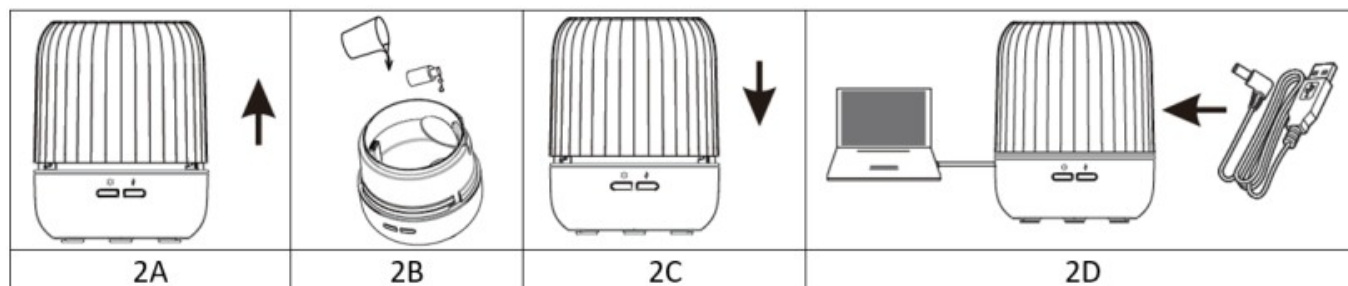
AD7968 Ultrasonic Aroma Diffuser



- **A.** Mist outlet
- **B.** Lid
- **C.** Water tank
- **D.** Air outlet
- **E.** Legs
- **F.** Base
- **G.** Air inlet
- **H.** USB port
- **I.** Atomizer ceramic plate
- **J.** Anti-splash cover
- **K.** USB cable
- **L.** Cleaning brush
- **M.** MAX water level
- **N.** Power/Mist button
- **O.** Backlight button

USEAGE

Place the device in the place of intended use and do not move it during use.



1. Place the device on a flat surface and remove the lid (B). (FIG.2A)
2. Connect the USB cable to the USB socket (H) on the base (F).
3. Fill the tank with tap water to the maximum water line. (FIG.2B)
Do not overfill the water tank (C) above the MAX level (M.), otherwise the mist production may be low.
Do not use hot water. Never refill water during operation. Pour the essential oil vertically into the water tank. (FIG.2B) The recommended dose is 2-3 drops of aromatic oil for a 100 ml tank.
4. Attach the ANTI-splash cover (FIG. 1). Put the lid (B) on the base. (FIG. 2C)
Note: The cover must be closed to use the product.
5. Connect the USB cable: (FIG. 2D)
 - to the USB power adapter you already have at home, then plug the power adapter into a power outlet or to the USB input of the computer / power bank.
6. Two button operation: Power/Mist Button (N):
 - First press: continuous mist with alternating 7 RGB LED colors.
 - Second press (double flash): intermittent mist generation (15 second pauses) with alternating 7 RGB LED colors.
 - Third press: Turns off the device (mist generation and lighting stop simultaneously).Backlight button (O):
 - First press: 7 RGB LED colors alternating.
 - Second press: constantly backlight with the last glowing color.
 - Third press: imitating the natural light of a burning candle mode.
 - Fourth press: Turn off the backlight.
7. If there is no water in the water tank (C), the diffuser will be turned off automatically.
8. The product cannot be used if there is no water in the tank (C).
NOTE: The mist concentration may vary slightly, which is normal. Different types of water, humidity, temperature and air velocity affect spray intensity.
9. Before replacing with another oil, please clean the device according to the maintenance instructions.
10. Never leave water in the tank (C) and disconnect the USB cable (K) when the device is not in use.
11. After working for a long time, turn off the device for 60 minutes to avoid damaging the ultrasonic wave atomizer, and then turn it on again.

ACCIDENTAL LEAK

If you accidentally tip your device over while in use, follow these steps:

1. Turn off the power. Unplug the appliance and open the lid (B) to pour out all the remaining water from the water tank (C).
2. Gently shake the device to drain the internal water.
3. Air dry the device in a safe place for 24 hours.

DESCALING

If there is limescale deposited in the aroma diffuser caused by water, you can add white vinegar to the water to dissolve the limescale, leave it for 20 minutes, then rinse with water. Then use a soft cloth to wipe off the water. Never use strong cleaning agents.

TROUBLESHOOTING

If this product is not working normally, please follow these steps for self- troubleshooting before sending the return to the seller:

- **PROBLEM 1: The product automatically turns off in one second when the N spray button is turned on.**

POSSIBLE CAUSE: Inadequate amount of water.

SOLUTION: Please add water to the water tank or drain if it exceeds the MAX level.

POSSIBLE CAUSE: The USB cable is not connected to the device.

SOLUTION: Make sure the USB cable is connected to the product and to the power source properly.

- **PROBLEM 2: No spray or abnormal spray**

POSSIBLE CAUSE: Inadequate amount of water.

SOLUTION: Please add water to the water tank if there is not enough. If the water level inside the water tank is higher than the maximum water level mark, the mist will be sprayed irregularly, abnormally. Drain the water so that it is below the "MAX" level. **POSSIBLE CAUSE:** The atomizer ceramic plate (I) is dirty.

SOLUTION: Please clean the water tank (C) and the ceramic atomizer plate (I).

POSSIBLE CAUSE: Lower air inlet holes (G) are dusty.

SOLUTION: If the air inlet holes (G) are dusty, the volume of air drawn in will be reduced significantly and the air momentum will not be enough to spray the mist. Clean the air intake.

- **PROBLEM 3: Leakage**

POSSIBLE CAUSE: Top cover (B) is not closed properly.

SOLUTION: Close both covers securely.

POSSIBLE CAUSE: Room temperature is too low or humidity is too high.

SOLUTION: If the temperature or humidity of the working environment is too low or too high, mist and water drops will accumulate on the surface of the device. Turn off the device.

CLEANING AND MAINTENANCE

Please clean the device according to the steps below after each use, change the water at least every 3 days:



1. When cleaning, disconnect the device from the power source.
2. Open the top cover (B), pour out all the remaining water from the water tank by gently shaking the device.
3. Dilute a little neutral kitchen detergent in warm water, then clean the appliance with the supplied brush (L).
4. If you notice dirt on the inside of the air outlet (D), remove the top cover (B) and clean it.
5. Please do not use medical diluent phenylethanol for maintenance, otherwise the product may be damaged.
6. If it is not used for a long time, pour out the remaining water from the water tank (C), and store it in a dry and cool place after cleaning.

Technical data:

- Power supply: USB 5V 1A (5W)
- Water tank volume: 100ml
- Mist capacity: 18+/-6ml/hour
- Ultrasonic frequency: 3.0MHz

To protect your environment: please separate carton boxes and plastic bags and dispose them in corresponding waste bins. Used appliance should be delivered to the dedicated collecting points due to hazardous components, which may effect the environment. Do not dispose this appliance in the common waste bin.



COFFEE GRINDER
AD 4446



TOASTER 2 SLICE
AD 3214



HAND BLENDER
Ad4625



MIXER WITH BOWL
AD 4222



AIR FRYER OVEN
AD 6309



MICROWAVE OVEN
AD 6205



WAFFLE MAKER
AD 3049



KITCHEN SCALE
AD 3170



ELECTRIC KETTLE
AD 1286



SANDWICH MAKER
AD 3043



PORTABLE FRIDGE
AD 8077



Electric Oven With HOB
AD 6020



FAN HEATER
AD 7728



MOSQUITO LAMP
AD 7938



HEATED PAD
AD 7433




ORAL IRRIGATOR
AD 2176

AFTER SALE SERVICE NOTICE

If you want to buy spare parts or make any complaints, please contact the seller who issued the receipt directly.

Documents / Resources

 <p>ADLER AD 7968</p>	<p>ADLER 7968 Diffusors Adler [pdf] User Manual 7968 Diffusors Adler, 7968, Diffusors Adler, Adler</p>
---	--

References

-  [AdlerEurope](#)
-  [AdlerEurope](#)

Manuals+.