

ADJ WIFI NET 2 Airstream DMX Bridge WiFi-WiFLY Wireless DMX Interface



ADJ WIFI NET 2 Airstream DMX Bridge WiFi-WiFLY Wireless DMX Interface User Manual

[Home](#) » [ADJ](#) » ADJ WIFI NET 2 Airstream DMX Bridge WiFi-WiFLY Wireless DMX Interface User Manual 

Contents

- [1 ADJ WIFI NET 2 Airstream DMX Bridge WiFi-WiFLY Wireless DMX Interface](#)
- [2 Product Information](#)
- [3 Product Usage Instructions](#)
- [4 FAQs](#)
- [5 GENERAL INFORMATION](#)
- [6 CUSTOMER SUPPORT](#)
- [7 LIMITED WARRANTY](#)
- [8 FEATURES](#)
- [9 SAFETY GUIDELINES](#)
- [10 OVERVIEW](#)
- [11 INSTALLATION](#)
- [12 CONNECTIONS](#)
- [13 MAINTENANCE](#)
- [14 ORDERING INFORMATION](#)
- [15 SPECIFICATIONS](#)
- [16 DIMENSIONAL DRAWINGS](#)
- [17 FCC](#)
- [18 Documents / Resources](#)
 - [18.1 References](#)



ADJ WIFI NET 2 Airstream DMX Bridge WiFi-WiFLY Wireless DMX Interface



Product Information

- **Specifications**

- **Manufacturer:** ADJ Products, LLC
- **Model:** WIFI NET 2
- **World Headquarters:** 6122 S. Eastern Ave. Los Angeles, CA 90040 USA
- **Contact Tel (USA):** [800-322-6337](tel:800-322-6337)
- **Contact Tel (Europe):** +31 45 546 85 00
- **Website:** www.adj.com.

Product Usage Instructions

- **Safety Guidelines**

- Please read and understand all safety guidelines before operating the product to prevent any risks of electrical shock or fire.
- Do not expose the unit to rain or moisture to avoid electrical hazards.

- **Installation**

- Follow the installation instructions provided in the manual carefully to ensure proper setup of the product.

- **Connections**

- Refer to the Connections section in the manual for detailed information on how to connect the product to other devices.

- **Setup**

- Follow the setup instructions to configure the product for optimal performance.

- **Maintenance**

- Regular maintenance is essential for the longevity of the product. Refer to the Maintenance section for guidance on proper upkeep.

- **Ordering Information**

- If you need to order any replacement parts or accessories, refer to the Ordering Information section for details on how to do so.

FAQs

- **Q: Can I repair the product myself?**

- **A:** No, there are no user-serviceable parts inside the unit. Attempting repairs yourself may void the manufacturer's warranty.

- **Q: How do I contact customer support?**

- **A:** For product-related service and support needs, contact ADJ Service via phone or email as provided in the manual.

- **Q: Where can I find parts for this product?**

- **A:** You can purchase parts online through the provided links based on your location (US or EU).

GENERAL INFORMATION

INTRODUCTION

- Please read and understand all instructions in this manual carefully and thoroughly before attempting to operate these products. These instructions contain important safety and use information.

UNPACKING

- This device has been thoroughly tested and has been shipped in perfect operating condition.
- Carefully check the shipping carton for damage that may have occurred during shipping.
- If the carton appears to be damaged, carefully inspect the device for damage and be sure all accessories necessary to operate the device have arrived intact.
- In the event, that damage has been found or parts are missing, please contact our customer support team for further instructions.
- Please do not return this device to your dealer without first contacting customer support at the number listed below.
- Please do not discard the shipping carton in the trash. Please recycle whenever possible.

CUSTOMER SUPPORT

- Contact ADJ Service for any product-related service and support needs. Also visit forums.adj.com with questions, comments or suggestions.
- **Parts:** To purchase parts online visit:
 - <http://parts.adj.com> (US)
 - <http://www.adjparts.eu> (EU)
- ADJ SERVICE USA – Monday – Friday 8:00 am to 4:30 pm PST
- **Voice:** [800-322-6337](tel:800-322-6337)
- **Fax:** [323-582-2941](tel:323-582-2941)
- support@adj.com

- ADJ SERVICE EUROPE – Monday – Friday 08:30 to 17:00 CET
- **Voice:** +31 45 546 85 60
- **Fax:** +31 45 546 85 96
- support@adj.eu
- **ADJ PRODUCTS LLC USA**
- 6122 S. Eastern Ave. Los Angeles, CA. 90040
- [323-582-2650](tel:323-582-2650)
- **Fax** [323-532-2941](tel:323-532-2941)
- www.adj.com
- info@adj.com
- **ADJ SUPPLY Europe B.V**
- Junostraat 2 6468 EW Kerkrade, The Netherlands
- +31 (0)45 546 85 00
- **Fax** +31 45 546 85 99
- www.adj.eu
- info@adj.eu.
- **ADJ PRODUCTS GROUP Mexico**
- AV Santa Ana 30 Parque Industrial Lerma, Lerma, Mexico 52000
- +52 [728-282-7070](tel:728-282-7070)

WARNING! To prevent or reduce the risk of electrical shock or fire, do not expose this unit to rain or moisture!
CAUTION! There are no user-serviceable parts inside this unit. Do not attempt any repairs yourself, as doing so will void your manufacturer's warranty. Damages resulting from modifications to this device and/or the disregard of safety instructions and guidelines in this manual void the manufacturer's warranty claims and are not subject to any warranty claims and/or repairs. Do not discard the shipping carton in the trash. Please recycle whenever possible.

LIMITED WARRANTY

LIMITED WARRANTY (USA ONLY)

- **A.** ADJ Products, LLC hereby warrants, to the original purchaser, ADJ Products, LLC products to be free of manufacturing defects in material and workmanship for a prescribed period from the date of purchase (see specific warranty period on reverse). This warranty shall be valid only if the product is purchased within the United States of America, including possessions and territories. It is the owner's responsibility to establish the date and place of purchase by acceptable evidence, at the time service is sought.
- **B.** For warranty service, you must obtain a Return Authorization number (RA#) before sending back the product contact ADJ Products, LLC Service Department at [800-322-6337](tel:800-322-6337). Send the product only to the ADJ Products, LLC factory. All shipping charges must be pre-paid. If the requested repairs or service (including parts replacement) are within the terms of this warranty, ADJ Products, LLC will pay return shipping charges only to a designated point within the United States. If the entire instrument is sent, it must be shipped in its original package. No accessories should be shipped with the product. If any accessories are shipped with the product, ADJ Products, LLC shall have no liability whatsoever for loss of or damage to any such accessories, or for the safe return thereof.
- **C.** This warranty is void if the serial number has been altered or removed; if the product is modified in any manner which ADJ Products, LLC concludes, after inspection, affects the reliability of the product, if the product has been repaired or service by anyone other than ADJ Products, LLC factory unless prior written authorization

was issued to purchaser by ADJ Products, LLC; if the product is damaged because not properly maintained as outlined in the instruction manual.

- **D.** This is not a service contract, and this warranty does not include maintenance, cleaning or periodic check-ups. During the period specified above, ADJ Products, LLC will replace defective parts at its expense with new or refurbished parts and will absorb all expenses for warranty service and repair labour because of defects in material or workmanship. The sole responsibility of ADJ Products, LLC under this warranty shall be limited to the repair of the product, or replacement thereof, including parts, at the sole discretion of ADJ Products, LLC. All products covered by this warranty were manufactured after August 15, 2012, and bear identifying marks to that effect.
- **E.** ADJ Products, LLC reserves the right to make changes in design and/or improvements upon its products without any obligation to include these changes in any products theretofore manufactured.
- **F.** No warranty, whether expressed or implied, is given or made concerning any accessory supplied with the products described above. Except to the extent prohibited by applicable law, all implied warranties made by ADJ Products, LLC in connection with this product, including warranties of merchantability or fitness, are limited in duration to the warranty period set forth above. And no warranties, whether expressed or implied, including warranties of merchantability or fitness, shall apply to this product after said period has expired. The consumer's and/or Dealer's sole remedy shall be such repair or replacement as is expressly provided above; and under no circumstances shall ADJ Products, LLC be liable for any loss or damage, direct or consequential, arising out of the use of, or inability to use, this product.
- **G.** This warranty is the only written warranty applicable to ADJ Products, LLC Products and supersedes all prior warranties and written descriptions of warranty terms and conditions heretofore published.

LIMITED WARRANTY PERIODS

- **Non L.E.D. Lighting Products** = 1-year (365 days) Limited Warranty (Such as Special Effect Lighting, Intelligent Lighting, UV lighting, Strobes, Fog Machines, Bubble Machines, Mirror Balls, Par Cans, Trussing, Lighting Stands etc. excluding LED and lamps)
- **Laser Products** = 1 Year (365 Days) Limited Warranty (excludes laser diodes which have 6 month limited warranty)
- **L.E.D. Products** = 2-year (730 days) Limited Warranty (excluding batteries which have a 180-day limited warranty)
- **Note:** 2-Year Warranty only applies to purchases within the United States.
- **StarTec Series** = 1-Year Limited Warranty (excluding batteries which have a 180-day limited warranty)
- **ADJ DMX Controllers** = 2 Year (730 Days) Limited Warranty

WARRANTY REGISTRATION

- This device carries a 2-year limited warranty.
- Please fill out the enclosed warranty card to validate your purchase.
- All returned service items, whether under warranty or not, must be freight pre-paid and accompanied by a return authorization (R.A.) number.
- The R.A. number must be written on the outside of the return package. A brief description of the problem as well as the R.A. number must also be written down on a piece of paper included in the shipping carton.
- If the unit is under warranty, you must provide a copy of your proof of purchase invoice.
- You may obtain an R.A. number by contacting our customer support team on our customer support number. All packages returned to the service department not displaying an R.A. number on the outside of the package will

be returned to the shipper.

FEATURES

- ArtNet / sACN / DMX, 2 Port Node
- 2.4G Wifi
- Line Voltage or PoE-powered
- Configurable from a unit menu or web browser

INCLUDED ITEMS

- Power Supply (x1)

SAFETY GUIDELINES

To guarantee a smooth operation, it is important to follow all instructions and guidelines in this manual. ADJ Products, LLC is not responsible for injury and/or damages resulting from the misuse of this device due to the disregard of the information printed in this manual. Only qualified and/or certified personnel should install this device and only the original rigging parts included with this device should be used for installation. Any modifications to the device and/or the included mounting hardware will void the original manufacturer's warranty and increase the risk of damage and/or personal injury.



- PROTECTION CLASS 1 – THE FIXTURE MUST BE PROPERLY GROUNDED



- THERE ARE NO USER-SERVICEABLE PARTS INSIDE THIS UNIT. DO NOT ATTEMPT ANY REPAIRS YOURSELF, AS DOING SO WILL VOID YOUR MANUFACTURER'S WARRANTY. DAMAGES RESULTING FROM MODIFICATIONS TO THIS DEVICE AND/OR THE DISREGARD OF SAFETY INSTRUCTIONS AND GUIDELINES IN THIS MANUAL VOID THE MANUFACTURER'S WARRANTY AND ARE NOT SUBJECT TO ANY WARRANTY CLAIMS AND/OR REPAIRS.



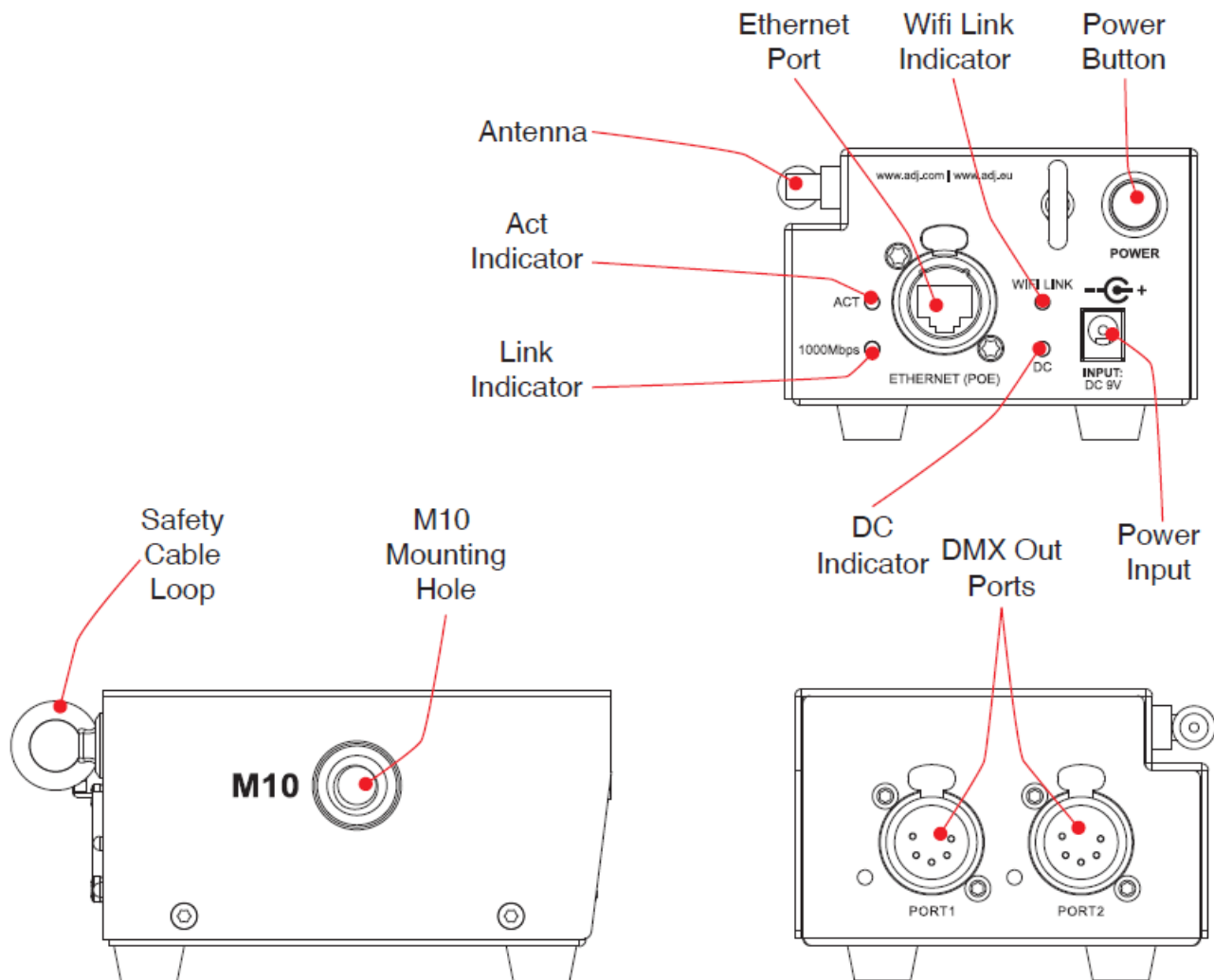
- DO NOT PLUG THE DEVICE INTO A DIMMER PACK! NEVER OPEN THIS DEVICE WHILE IN USE! UNPLUG THE POWER BEFORE SERVICING THE DEVICE! AMBIENT TEMPERATURE RANGE IS -4°F TO 113°F (-20°C TO 45°C). DO NOT OPERATE WHEN AMBIENT TEMPERATURE FALLS OUTSIDE OF THIS RANGE! KEEP FLAMMABLE MATERIALS AWAY FROM THE DEVICE!






- IF THE DEVICE IS EXPOSED TO ENVIRONMENTAL TEMPERATURE CHANGES SUCH AS RELOCATION FROM AN OUTDOOR COLD TO AN INDOOR WARM ENVIRONMENT, DO NOT POWER THE DEVICE ON IMMEDIATELY. INTERNAL CONDENSATION AS A RESULT OF ENVIRONMENTAL TEMPERATURE CHANGE CAN CAUSE INTERNAL DAMAGE. LEAVE THE DEVICE POWERED OFF UNTIL IT HAS REACHED ROOM TEMPERATURE BEFORE POWERING ON.
- For your safety, please read and understand this manual in its entirety before attempting to install or operate this device.
- Save the packing carton for use in the unlikely event the device may have to be returned for service.

- Do not spill water or other liquids into or onto the device.
- Be sure that the local power outlet matches the required voltage for the device
- Do not remove the outer casing of the device for any reason. There are no user-serviceable parts inside.
- Disconnect the device's main power when left unused for long periods.
- Never connect this device to a dimmer pack
- Do not attempt to operate this device if it has been damaged in any way.
- Never operate this device with the cover removed.
- To reduce the risk of electrical shock or fire, do not expose this device to rain or moisture.
- Do not attempt to operate this device if the power cord has been frayed or broken.
- Do not attempt to remove or break off the ground prong from the electrical cord. This prong is used to reduce the risk of electrical shock and fire in case of an internal shortage.
- Disconnect from the main power before making any type of connection.
- Never block the ventilation holes. Always be sure to mount this device in an area that will allow proper ventilation. Allow about 6" (15cm) between this device and a wall.
- This unit is intended for indoor use only. Use of this product outdoors voids all warranties.
- Always mount this unit safely and stably.
- Please route your power cord out of the way of foot traffic. Power cords should be routed so they are not likely to be walked on, or pinched by items placed upon or against them.
- Ambient operating temperature range is -4°F to 113°F (-20°C to 45°C). Do not operate this device when the ambient temperature falls outside this range!
- Keep flammable materials away from this fixture!
- **The device should be serviced by qualified service personnel when:**
 - **A.** The power supply cord or the plug has been damaged.
 - **B.** Objects have fallen on, or liquid has been spilled into, the device.
 - **C.** The device has been exposed to rain or water.
 - **D.** The appliance does not appear to operate normally or exhibit a marked change in performance.

OVERVIEW



INSTALLATION

- 
FLAMMABLE MATERIAL WARNING Keep the device at least 8in. (0.2m) away from any flammable materials, decorations, pyrotechnics, etc.
- 
ELECTRICAL CONNECTIONS A qualified electrician should be used for all electrical connections and/or installations.
- 
MINIMUM DISTANCE TO OBJECTS/SURFACES MUST BE 40 FEET (12 METERS)

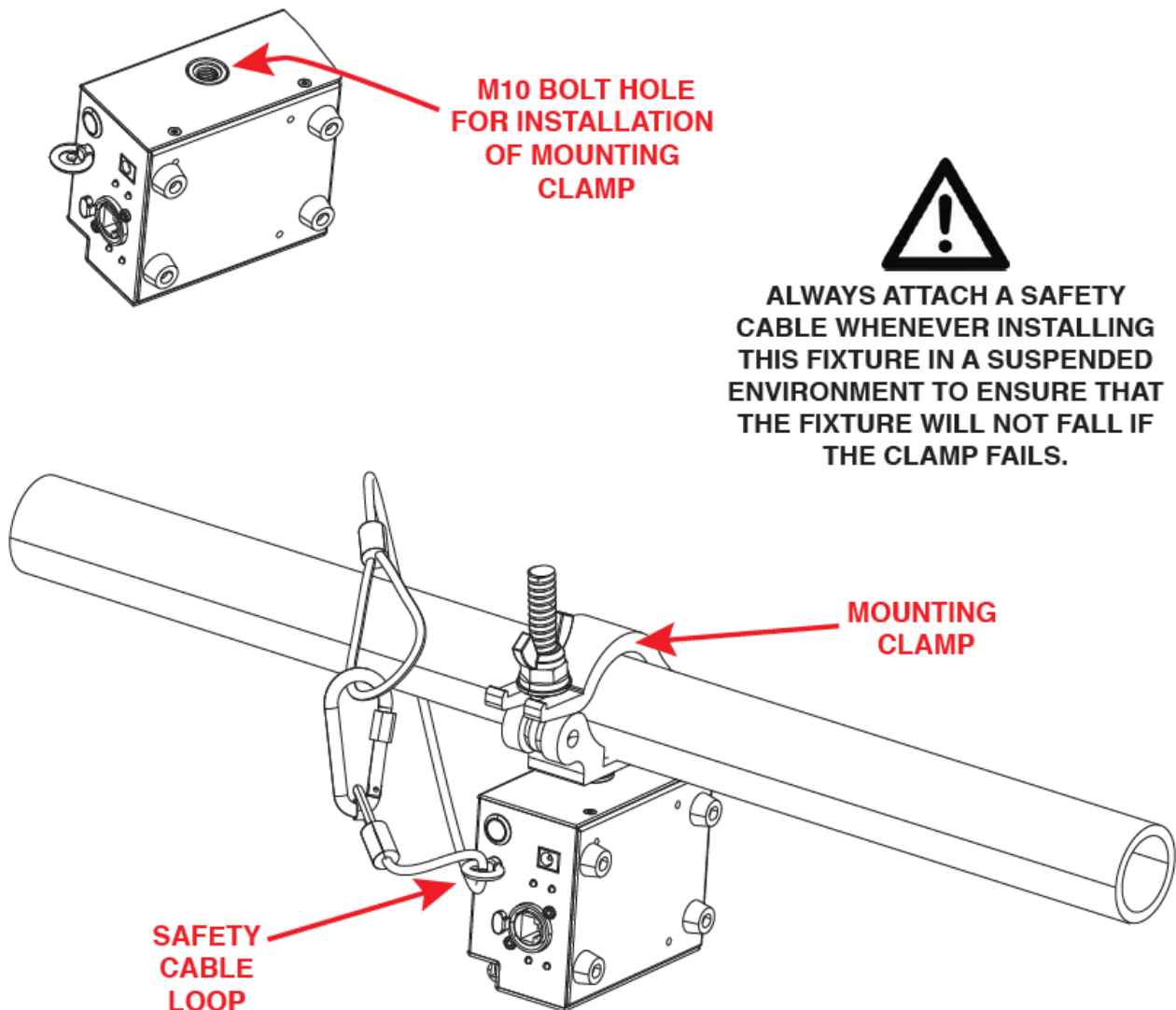
DO NOT INSTALL THE DEVICE IF YOU ARE NOT QUALIFIED TO DO SO!

- Ambient operating temperature range is -4°F to 113°F (-20°C to 45°C). Do not use this device when the ambient temperature falls outside this range!
- The device should be installed away from walking paths, seating areas, or areas where unauthorized personnel might reach the device by hand.
- The device **MUST** be installed following all local, national, and country commercial electrical and construction codes and regulations.

- Before rigging/mounting a single device or multiple devices to any metal truss/structure or placing the device(s) on any surface, a professional equipment installer **MUST** be consulted to determine if the metal truss/structure or surface is properly certified to safely hold the combined weight of the device(s), clamps, cables, and accessories.
- **NEVER** stand directly below the device(s) when rigging, removing, or servicing.
- Overhead installation must always be secured with a secondary safety attachment, such as an appropriately rated safety cable.
- Allow approximately 15 minutes for the fixture to cool down before servicing.
- For best signal quality, position the antenna at a 45-degree angle.

CLAMP INSTALLATION

- This device features an M10 bolt-hole built into the side of the device, as well as a safety cable loop located on the rear face of the fixture beside the power button (see the illustration below).
- When mounting the fixture to a truss or any other suspended or overhead installation, use the mounting hole to insert and install a mounting clamp. Attach a separate **SAFETY CABLE** of the appropriate rating (not included) to the provided safety cable loop.



RIGGING

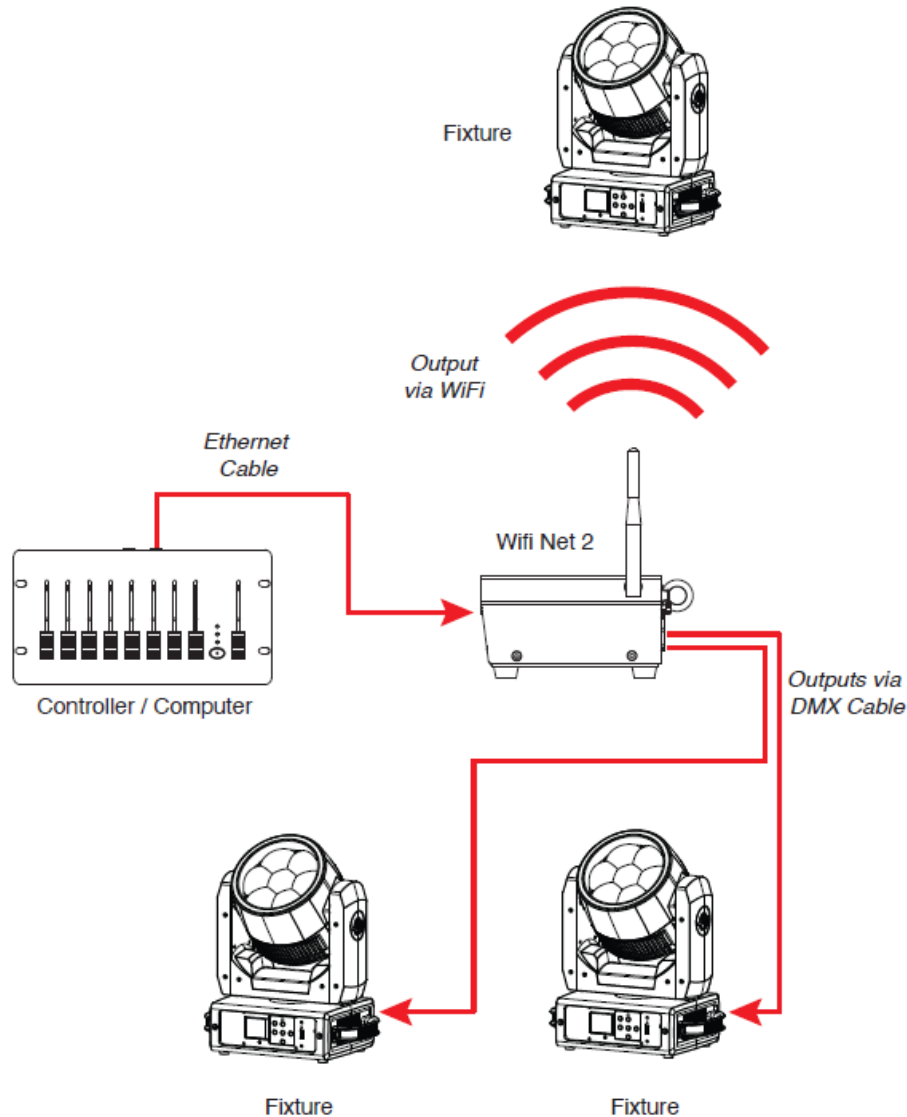
- Overhead rigging requires extensive experience, including but not limited to calculating working load limits, understanding the installation material being used, and periodic safety inspection of all installation material and

the fixture itself.

- If you lack these qualifications, do not attempt to perform the installation yourself. Improper installation can result in bodily injury.

CONNECTIONS

This device receives input signals from a computer or DMX controller via Ethernet cable only and sends output signals via both WiFi and DMX cable. Refer to the diagram below.



REMOTE DEVICE MANAGEMENT (RDM)

- **NOTE:** For RDM to work properly, RDM-enabled equipment must be used throughout the entire system, including DMX data splitters and wireless systems.
- Remote Device Management (RDM) is a protocol that sits on top of the DMX512 data standard for lighting and allows the DMX systems of the fixtures to be modified and monitored remotely. This protocol is ideal for instances in which a unit is installed in a location that is not easily accessible.
- With RDM, the DMX512 system becomes bi-directional, allowing a compatible RDM-enabled controller to send out a signal to devices on the wire, as well as allowing the fixture to respond (known as a GET command). The controller can then use its SET command to modify settings that would typically have to be changed or viewed directly via the unit's display screen, including the DMX Address, DMX Channel Mode, and Temperature Sensors.

FIXTURE RDM INFORMATION:

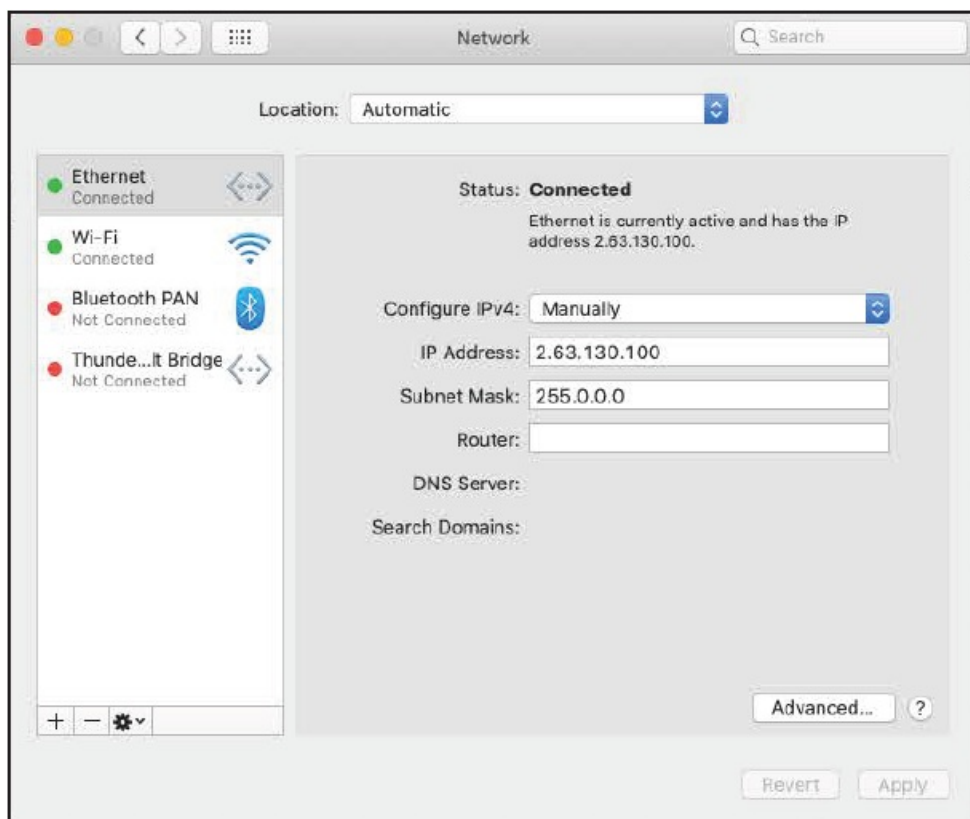
Device ID	Device Model ID	RDM Code	Personality ID
N/A	N/A	0x1900	N/A

Please be aware that not all RDM devices support all RDM features, and therefore it is important to check beforehand to ensure that the equipment that you are considering includes all of the features that you require.

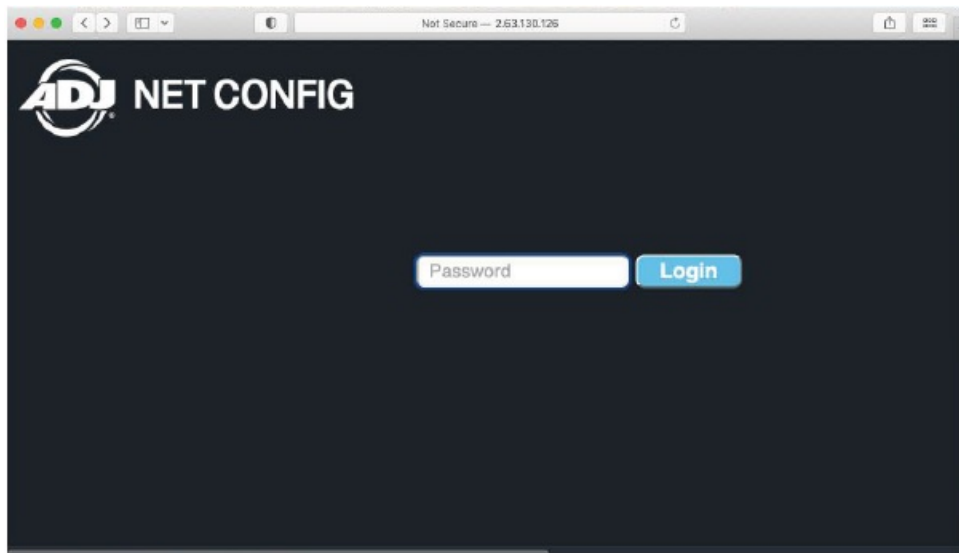
SETUP

Follow the directions below to set up your device. Please note: for best signal quality, position the antenna at a 45-degree angle.

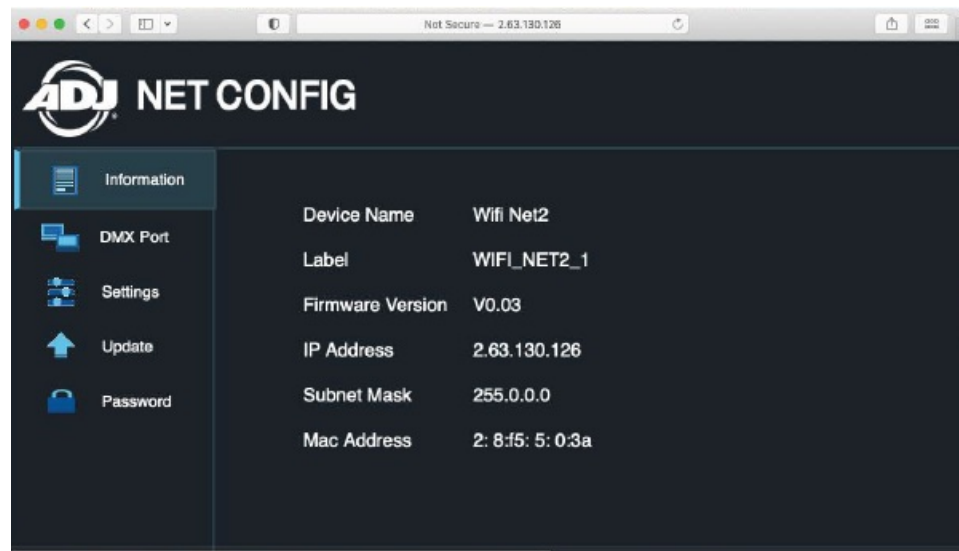
1. Use the included power supply to connect the unit to power, then press the power button to switch the unit on.
2. Use an Ethernet cable to connect the unit's Ethernet port to your computer.
3. Open the Network Preferences window on your computer, and navigate to the "Ethernet" section. Refer to the image below.
 - Set the Configure IPxx setting to "Manual" or the equivalent.
 - Enter in an IP Address that matches the address listed on the bottom of your device, except for the last 3 digits. For Example, if the address on the bottom of your device is "2.63.130.001", you should set the IP Address in the Ethernet tab of your computer's Network Preferences to "2.63.130.xxx", where xxx is any 3-digit combination other than 001.
 - Set the Subnet Mask to "255.0.0.0".
 - Clear the box for the Router.



4. Go to your browser window. Enter the exact IP address (for all numbers this time) shown on the bottom of your device. This should take you to a login screen, where you can use the password "ADJAdmin" to access the device, then press Login.



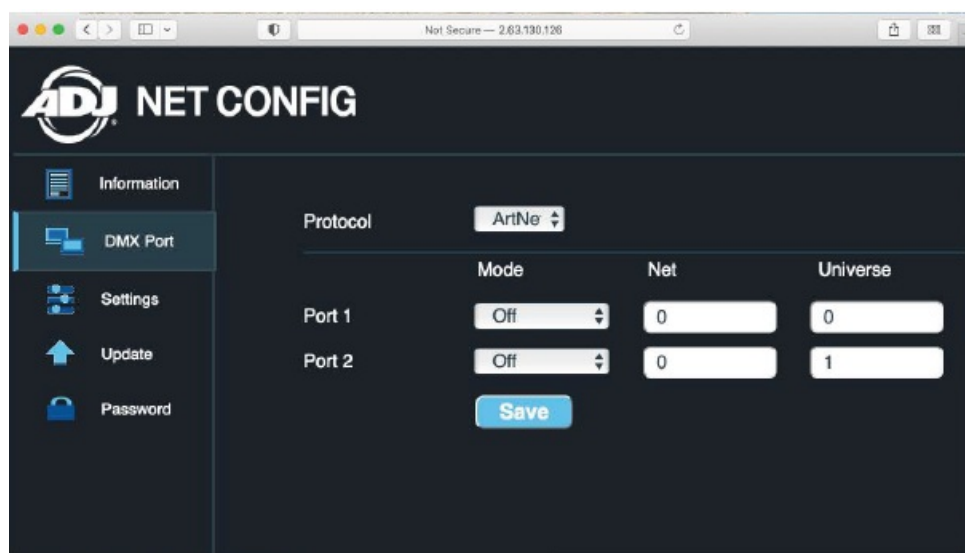
5. The browser will now load the Information page. Here you can view the device name, an editable device label, the firmware version, the IP address, the subnet mask, and the Mac address. Reaching this page means that the initial setup is complete.



Now that the initial setup has been completed, you can jump to various pages in your web browser to configure various operational settings and functions.

DMX PORT

Use this page to select the operating protocol for this device, and set the activation status, network, and universe for each of the 2 DMX ports.

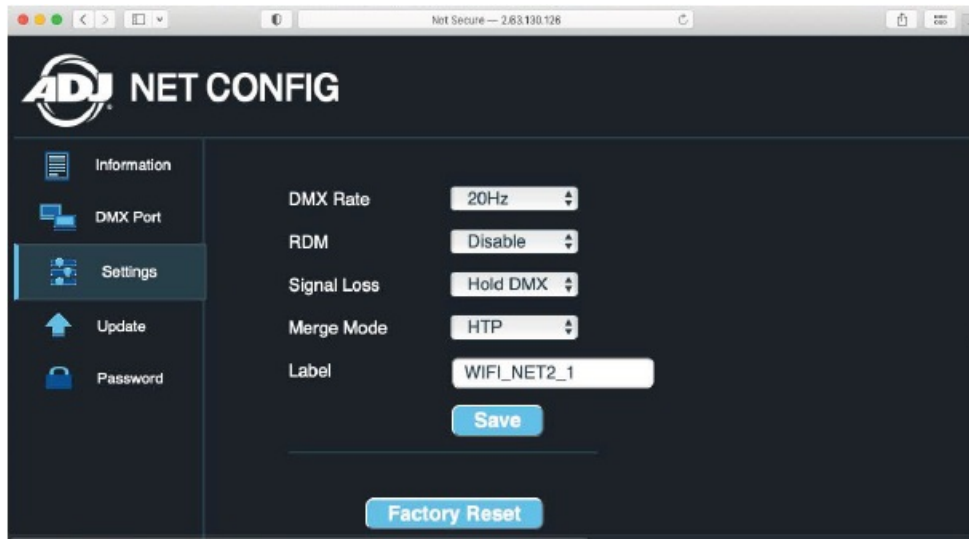


SETTINGS

Use this page to set the following operational settings:

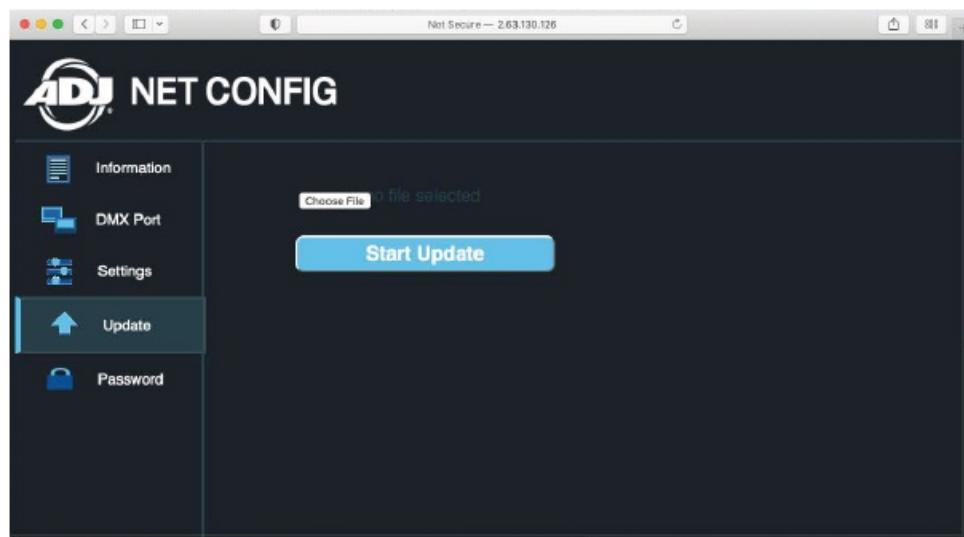
DMX Rate

- **RDM Status:** enable or disable RDM
- **Signal Loss:** defines how the device will behave when the DMX signal is lost or interrupted
- **Merge Mode:** in the event of two input signals, the node will give precedence to either the latest received signal (LTP) or the signal with the higher value (HTP)
- **Label:** give the device a custom nickname for easy identification



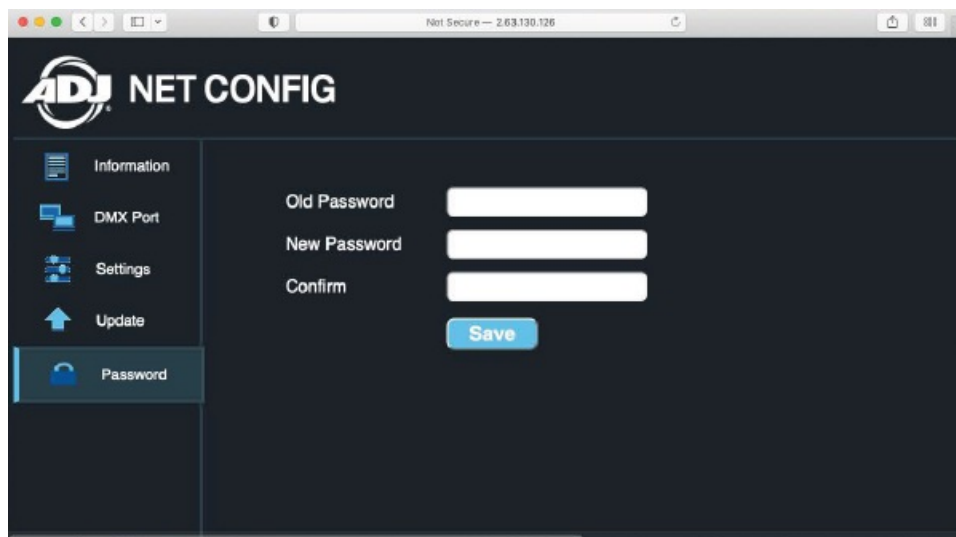
UPDATE

- Use this page to update the software on this device. Simply click the “Choose File” button to select the update file, then click “Start Update” to commence the update process.



PASSWORD

- Use this page to update the software on this device. Enter the current password in the “Old Password” box, then enter the new password you wish to use in the “New Password” box.
- Re-type the new password in the “Confirm” box, then press “Save” to confirm.



MAINTENANCE

DISCONNECT POWER BEFORE PERFORMING ANY MAINTENANCE!

CLEANING

Regular cleaning is recommended to ensure proper function and an extended life. The frequency of cleaning depends on the environment in which the fixture operates: damp, smoky, or particularly dirty environments can cause a greater accumulation of dirt on the device. Clean the external surface regularly with a soft cloth to avoid dirt/debris accumulation.

NEVER use alcohol, solvents, or ammonia-based cleaners.

MAINTENANCE

Regular inspections are recommended to ensure proper function and extended life. There are no user-serviceable parts inside this device. Please refer all other service issues to an authorized ADJ service technician. Should you need any spare parts, please order genuine parts from your local ADJ dealer.

Please refer to the following points during routine inspections:

- **A.** A detailed electrical check by an approved electrical engineer every three months, to make sure the circuit contacts are in good condition and prevent overheating.
- **B.** Be sure all screws and fasteners are securely tightened at all times. Loose screws may fall out during normal operation, resulting in damage or injury as larger parts could fall.
- **C.** Check for any deformations on the housing, rigging hardware, and rigging points (ceiling, suspension, trussing). Deformations in the housing could allow for dust to enter into the device. Damaged rigging points or unsecured rigging could cause the device to fall and seriously injure a person(s).
- **D.** Electric power supply cables must not show any damage, material fatigue, or sediments.

ORDERING INFORMATION

SKU (US)	SKU (EU)	ITEM
WIF200	1321000088	ADJ Wifi Net 2

SPECIFICATIONS

Features:

- ArtNet / sACN /DMX, 2 Port Node
- 2.4G Wifi
- Line Voltage or PoE-powered

- Configurable from the unit menu or web browser

Protocols:

- DMX512
- RDM
- Artnet
- sACN

Physical:

- M10 Thread for clamp/rigging
- Safety eyelet
- 1x Indoor RJ45 Input
- 2x 5-pin XLR Input / Output

Dimensions & Weight:

- **Length:** 3.48" (88.50mm)
- **Width:** 5.06" (128.55mm)
- **Height:** 2.46" (62.5mm)
- **Weight:** 1.23lbs. (0.56kg)

Power:

- 9VDC and POE
- POE 802.3af
- **AC Power:** DC9V-12V 300mA min.
- **POE Power:** DC12V 1A
- **Power Consumption:** 2W @ 120V and 2W @ 230V

Thermal:

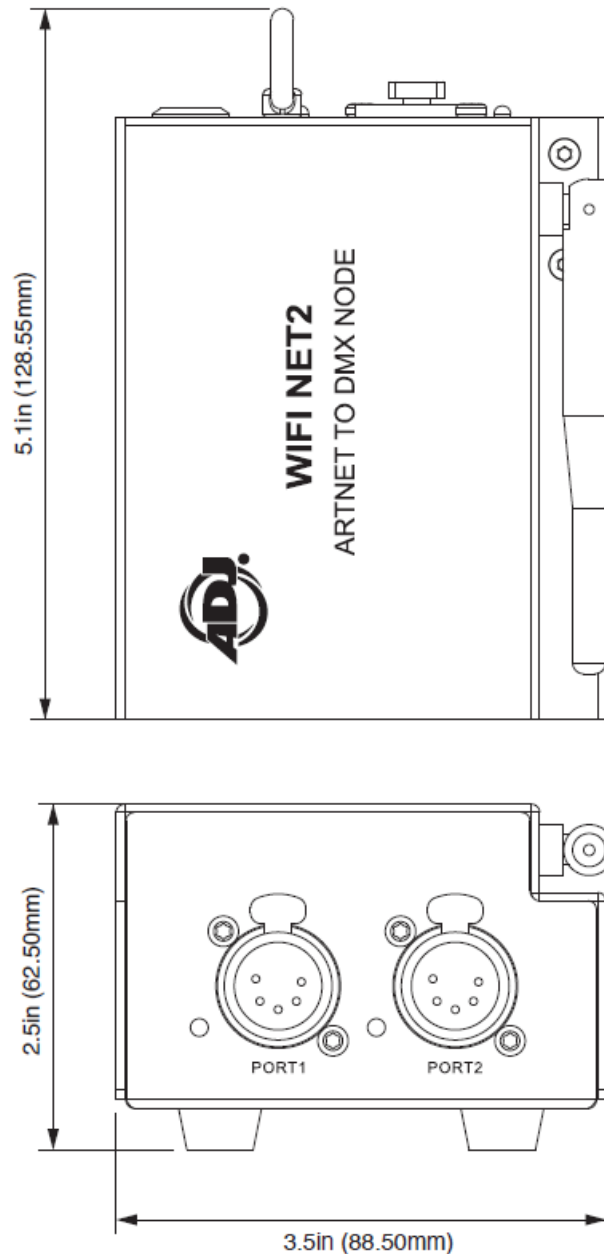
- **Ambient Operational Temperature:** -4°F to 113°F (-20°C to 45°C)
- **Humidity:** <75%
- **Storage Temperature:** 77°F (25°C)

Certifications & IP Rating:

- CE
- cETLus
- FCC
- IP20
- UKCA



DIMENSIONAL DRAWINGS



FCC

FCC STATEMENT

This device complies with Part 15 of the FCC Rules.

Operation is subject to the following two conditions:

1. this device may not cause harmful interference, and
2. this device must accept any interference received, including interference that may cause undesired operation.

FCC RADIO FREQUENCY INTERFERENCE WARNINGS & INSTRUCTIONS

This product has been tested and found to comply with the limits as per Part 15 of the FCC Rules. These limits are designed to provide reasonable protection against harmful interference in a residential installation. This device uses and can radiate radio frequency energy and, if not installed and used by the included instructions, may cause harmful interference to radio communications. However, there is no guarantee that interference will not occur in a particular installation. If this device does cause harmful interference to radio or television reception, which can be determined by turning the device off and on, the user is encouraged to try to correct the interference by one or more of the following methods:

- Reorient or relocate the device.
- Increase the separation between the device and the receiver.

- Connect the device and the radio receiver to electrical outlets on different electrical circuits.
- Consult the dealer or an experienced radio/TV technician for help.

©2024 ADJ Products, LLC all rights reserved. Information, specifications, diagrams, images, and instructions herein are subject to change without notice. ADJ Products, LLC logo and identifying product names and numbers herein are trademarks of ADJ Products, LLC. Copyright protection claimed includes all forms and matters of copyrightable materials and information now allowed by statutory or judicial law or hereinafter granted. Product names used in this document may be trademarks or registered trademarks of their respective companies and are hereby acknowledged. All non-ADJ Products, LLC brands and product names are trademarks or registered trademarks of their respective companies. ADJ Products, LLC and all affiliated companies hereby disclaim any liabilities for property, equipment, building, and electrical damages, injuries to any persons, and direct or indirect economic loss associated with the use or reliance of any information contained within this document, and/or as a result of the improper, unsafe, insufficient and negligent assembly, installation, rigging, and operation of this product.

- ADJ PRODUCTS LLC World Headquarters

- 6122 S. Eastern Ave.

- Los Angeles, CA 90040 USA

- **Tel:** [800-322-6337](tel:800-322-6337)

- **Fax:** [323-582-2941](tel:323-582-2941)

- www.adj.com

- support@adj.com.

- ADJ Supply Europe B.V.

- Junostraat 2

- 6468 EW Kerkrade

- Netherlands

- **Tel:** +31 45 546 85 00

- **Fax:** +31 45 546 85 99

- www.adj.eu

- service@adj.eu

- Europe Energy Saving Notice

- Energy Saving Matters (EuP 2009/125/EC)

- Saving electric energy is a key to protecting the environment.

- Please turn off all electrical products when they are not in use.

- To avoid power consumption in idle mode, disconnect all electrical equipment from power when not in use.

Thank you!

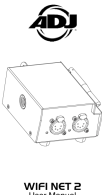
DOCUMENT VERSION

- Due to additional product features and/or enhancements, an updated version of this document may be available online.
- Please check www.adj.com for the latest revision/update of this manual before beginning installation and/or programming.



Date	Document Version	Software Version >	DMX Channel Mode	Notes
04/22/24	1.0	1.00	N/A	Initial Release

Documents / Resources

	ADJ WIFI NET 2 Airstream DMX Bridge WiFi-WiFLY Wireless DMX Interface [pdf] User Manual WIFI NET 2 Airstream DMX Bridge WiFi-WiFLY Wireless DMX Interface, Airstream DMX Bridge WiFi-WiFLY Wireless DMX Interface, DMX Bridge WiFi-WiFLY Wireless DMX Interface, WiFi-WiFLY Wireless DMX Interface, Wireless DMX Interface, DMX Interface, Interface
--	---

References

- [Topics | ADJ Forums](#)
- [ADJ Product Parts - Lighting Online Parts Store](#)
- [Home](#)
- [ADJ Supply Europe](#)
- [ADJ Partsshop - Service is our passion!](#)
- [User Manual](#)

[Manuals+](#), [Privacy Policy](#)

This website is an independent publication and is neither affiliated with nor endorsed by any of the trademark owners. The "Bluetooth®" word mark and logos are registered trademarks owned by Bluetooth SIG, Inc. The "Wi-Fi®" word mark and logos are registered trademarks owned by the Wi-Fi Alliance. Any use of these marks on this website does not imply any affiliation with or endorsement.