

Contents [[hide](#)]

- [1 Aditech o-TURTLE 3 Smart TTL Trigger](#)
- [2 Product Usage Instructions](#)
- [3 What's in the box you purchased](#)
- [4 Compatibility](#)
- [5 Getting Started](#)
- [6 Hardware overview](#)
- [7 Warranty](#)
- [8 FAQ](#)
- [9 Documents / Resources](#)
 - [9.1 References](#)

Aditech

Aditech o-TURTLE 3 Smart TTL Trigger



Specifications:

- **Compatible with:** Panasonic and Olympus cameras

- **Flash Functions:** TTL, Manual, HSS
- **Supported Strobes:** Ikelite DS160, Seaflash 60D, 160D, Inon Z240/Z330, Sea&Sea YS 110A, YS D1, YS-D2, YS D2J, YS-D3, YS-D3 DUO, Subtronic 160, 270, One UW, RED64, Retra PRO, PROX, PRO MAX, AOI Intelli Strobe, Backscatter HF-1, APOLLO S

Product Usage Instructions

Getting Started:

1. Software Setup: Download the Setup program from the product page for Windows or from the App Store for Mac.
2. Setup Video: Watch the setup video at [here](#).

Step-by-step instructions for setting up the trigger with software SETUP TURTLE:

1. Turn off the trigger.
2. Connect it to your computer using the provided USB cable.
3. Launch the software and open the Setup TURTLE menu.
4. Turn the trigger ON while connected.
5. Click 'Find Serial Port' and select the second COM port in the dropdown. If needed, try different ports if multiple devices use virtual COM ports.
6. Choose the TTL strobe profile you wish to use.
7. Click 'Download' to upload the settings to the trigger. Confirmation will be displayed in the lower info window.

CHECK TURTLE:

To check the battery level:

- Press the small button on the back of the trigger until it starts flashing.
- Alternatively, check it in the setup software under the CHECK TURTLE menu.

Dear TURTLE user,

Thank you for choosing the TRT-electronics TURTLE trigger to achieve perfect TTL or manual control in your underwater photography setup.

This product is designed for users who want to utilize TTL, MANUAL, or even HSS functions with their underwater strobes.

The o-TURTLE 3 SMART version is compatible with Panasonic and Olympus cameras

What's in the box you purchased

- 1 trigger unit with a battery configured for Nikon camera protocol
- 1 LED adapter to mount inside your underwater housing window
- 1 USB-C to USB-C combo cable for programming and charging
- 1 USB-C to USB-B adapter (if your computer lacks a USB-C port)
- 1 spare battery
- 1 silica gel packet to protect the SMD LEDs from moisture
- 1 protective case for safe transport during your trips

Compatibility

Currently tested on the following systems:

PANASONIC: GH4, GH5, GH6 – (Wireless TTL mode supported)

Nikon DSLR: OM-D E-M1, OM-D E-M1 mk2; OM-D E-M1 mk3; OM-D E-M5, OM-D E-M5, mk 2; OM-D E-M5 mk3; OM-D E-M10; OM-D E-M10 mk 2; OM-D E-M10 mk3; OM-D E-M4; OM E-M5
(RC MODE supported)

This list may expand—please refer to the product description on our website for the latest updates.

Available flash functions:

- TTL/MANUAL switching from the camera menu during the dive
- First curtain sync (TTL / MANUAL from camera menu during the dive)
- Second curtain sync (TTL / MANUAL from camera menu during the dive)
- HSS (High-Speed Sync) is automatically activated above the maximum flash sync speed.
- The o-TURTLE trigger automatically switches to HSS manual mode at the value set in

the setup software. This value cannot exceed the maximum sync speed specified in the camera's official specifications.

For example, for the OMD EM5 MK2, this is 1/250.

Supported strobes (2025.07):

- Ikelite DS160
- Seaflash 60D, 160D
- Inon Z240 / Z330
- Sea&Sea YS 110A, YS D1, YS-D2, YS D2J, YS-D3, YS-D3 DUO
- Subtronic 160,270
- One UW
- RED64
- Retra PRO , PROX, PRO MAX
- AOI Intelli Strobe (Full functionality in Olympus RC mode HSS, TTL, MANUAL
Panasonic Wireless mode only TTL control available (AOI feature))
- Backscatter HF-1 (Full functionality in Olympus RC mode HSS, TTL, MANUAL
Panasonic Wireless mode only TTL control available (HF-1 feature))
- APOLLO S

Getting Started

Software setup

If you did not request pre-configuration, please download the Setup program. (For Windows: from the product page | For Mac: from the App Store)

- Setup TURTLE – Configure TTL strobe profiles and manual mode
- Check TURTLE – Check current settings and battery level
- Help – Guides for configuration and supported strobe types
- About – Information about the company and product



? Setup video:

<https://www.youtube.com/watch?v=dvZWvdJavJ8>

Step-by-step instructions for setup the trigger with software

SETUP TURTLE

1. Turn off the trigger



2. Connect it to your computer using the USB cable provided



3. Launch the software and open the “Setup TURTLE” menu



4. Turn the trigger ON while connected.



5. Click “Find Serial Port”, and select the second COM port in the dropdown.



If multiple devices use virtual COM ports, try different ones if needed

6. Choose the TTL strobe profile you wish to use



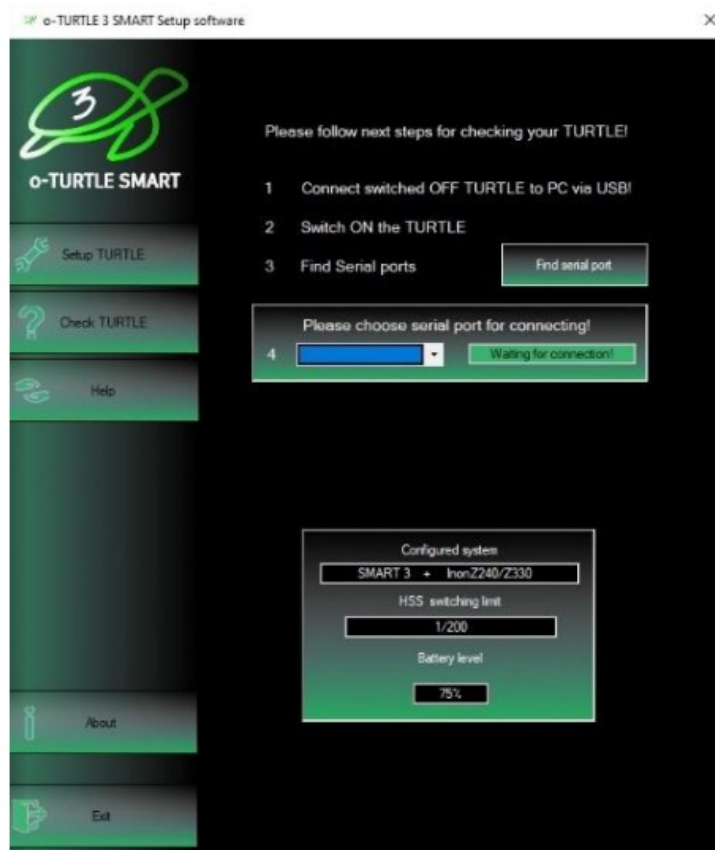
7. Click “Download” to upload the settings to the trigger. You’ll see confirmation in the lower info window.



CHECK TURTLE

If you want to check the battery level, there are two options:

You can either press the small button on the back of the trigger a few times until it starts flashing — we'll cover this in more detail later — or you can check it in the setup software under the CHECK TURTLE menu



Repeat steps 1–5, then click the “Setup Checking” button.

The info window will show the selected strobe , the battery level and the HSS limit switching level.

Hardware overview



Battery

This is the first TTL trigger on the market with a user-replaceable battery.

It uses a standard LQ-S1 battery (commercially available), but only one specific type is compatible—please check connector type before purchasing.



This battery can provide power for approximately 6000 shots, assuming the camera's sleep mode is enabled.

If sleep mode is not enabled and the camera remains active continuously, the battery may discharge within 5 days. Battery capacity and charge level can be checked via the software, but you can also get feedback by pressing the SMART button on the back of the i-TURTLE 3 trigger.

It's recommended to turn off the camera first, then power cycle the TURTLE (off and on again). The trigger can remain connected to the camera.

Then, press the button and observe the number of LED flashes below the SMART label to determine the battery level.

? Battery replacement video:

<https://www.youtube.com/watch?v=x1hy1vVlnBw>

Strobe connector:

If you need a wired solution for your underwater setup, we can provide various connector types where the X-trigger, Quench, and GND lines are exposed.

By default, we offer optical solutions.

TTL functionality is only guaranteed when using the LEDs supplied by us.



Rear buttons & indicators



Battery level indicator
4 flashes = 100%
3 flashes = 75%
2 flashes = 50%
1 flash = 25%

Battery check button – activates the SMART LED feedback

Main switch – on/off

Charge indicator – lit during charging, turns off when full

USB-C port – for charging and programming

Warranty

The product comes with a 2-year manufacturer's warranty.

Shipping costs for returning a faulty product are not covered by the warranty.

We wish you great dives and successful photography!

FAQ

What cameras are compatible with the o-TURTLE 3 SMART version?

The o-TURTLE 3 SMART version is compatible with Panasonic and Olympus

cameras.


How do I switch between TTL and manual modes during a dive?

You can switch between TTL and manual modes from the camera menu during your dive.

How does HSS (High-Speed Sync) function work?

HSS is automatically activated above the maximum flash sync speed. The trigger switches to HSS manual mode at a value set in the setup software, not exceeding the camera's maximum sync speed specifications.

Documents / Resources

	Aditech o-TURTLE 3 Smart TTL Trigger [pdf] Instructions o-TURTLE 3 Smart TTL Trigger, o-TURTLE 3, Smart TTL Trigger, TTL Trigger, Trigger
---	--

References

- [User Manual](#)

Aditech, o-TURTLE 3, o-TURTLE 3 Smart TTL Trigger, Smart TTL Trigger, Trigger, TTL

Aditech Trigger

Leave a comment

Your email address will not be published. Required fields are marked *

Comment *

Name

Email

Website

☐ Save my name, email, and website in this browser for the next time I comment.

Post Comment

Search:

e.g. whirlpool wrf535swhz

Search

[Manuals+](#) | [Upload](#) | [Deep Search](#) | [Privacy Policy](#) | [@manuals.plus](#) | [YouTube](#)

This website is an independent publication and is neither affiliated with nor endorsed by any of the trademark owners. The "Bluetooth®" word mark and logos are registered trademarks owned by Bluetooth SIG, Inc. The "Wi-Fi®" word mark and logos are registered trademarks owned by the Wi-Fi Alliance. Any use of these marks on this website does not imply any affiliation with or endorsement.