

# ADFLOW DMS Kiosk User Guide

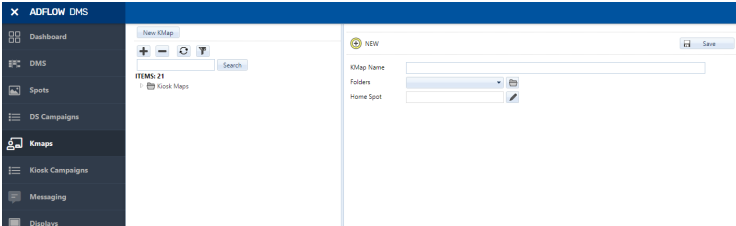
[Home](#) » [ADFLOW](#) » ADFLOW DMS Kiosk User Guide 

### Contents

- 1 [ADFLOW DMS Kiosk](#)
- 2 [ADFLOW DMSTM Kiosk Quick Guide](#)
- 3 [Product Information](#)
- 4 [Product Usage Instructions](#)
- 5 [Documents / Resources](#)
- 6 [Related Posts](#)



## ADFLOW DMS Kiosk



## ADFLOW DMSTM Kiosk Quick Guide

This quick guide provides information about how to setup and assign a timeframe to a kiosk campaign in the Adflow DMS.

### Product Information

Product Name	ADFLOW DMSTM Kiosk
Description	The ADFLOW DMSTM Kiosk is a digital signage management system that allows users to create and manage kiosk campaigns.

## Product Usage Instructions

1. Select the Kiosk campaigns module. Refer to Figure 1.
2. The user can select New Campaign to create a new campaign or search for an existing campaign to modify.
3. Once the campaign is selected, it must be assigned a timeframe. Refer to Figure 2.
4. Click Add Kmap (can only have one KMap assigned to a campaign at a time).

**Note:** To remove a Kmap from a campaign, place a check mark next to the KMap and select Remove Selected. To add a new Kmap, select Add KMap.

1. Select the displays from the display tree. Refer to Figure 3.
2. Select Save and Approve. Refer to Figure 4.

### Figures

Figure 1: Kiosk Campaign

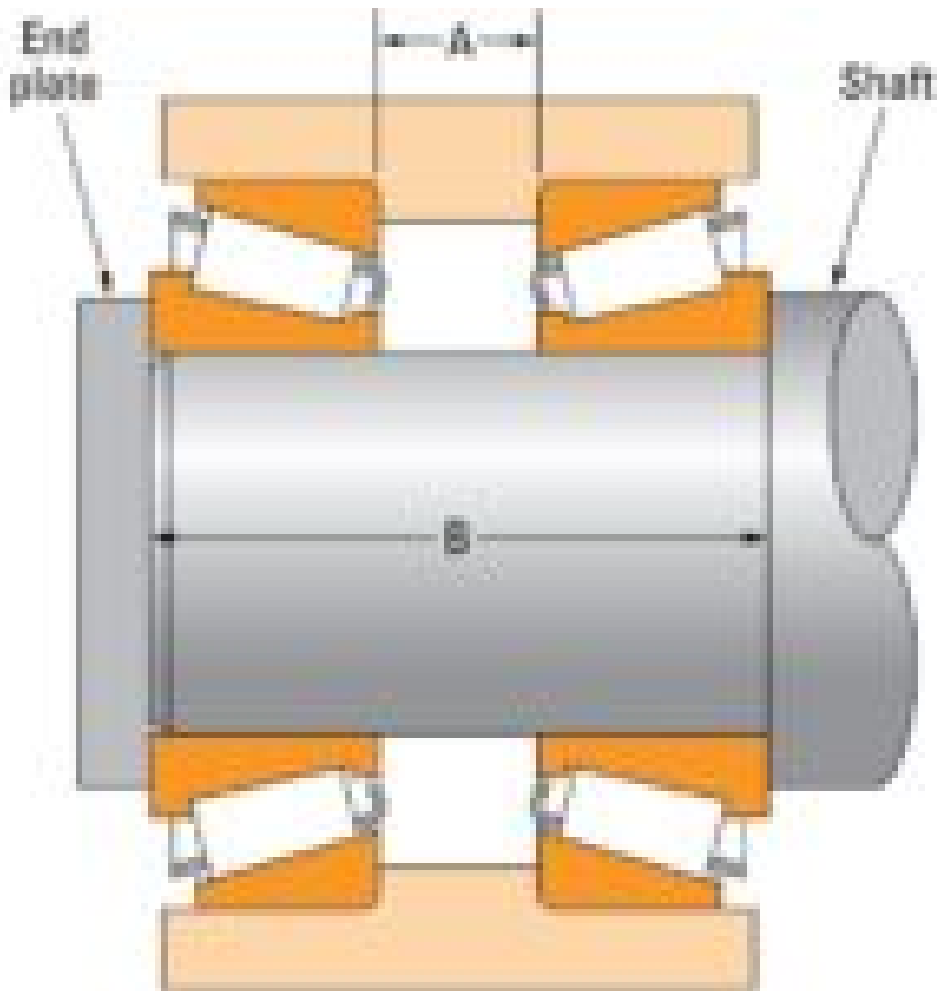


Figure 2: Time Frame Options

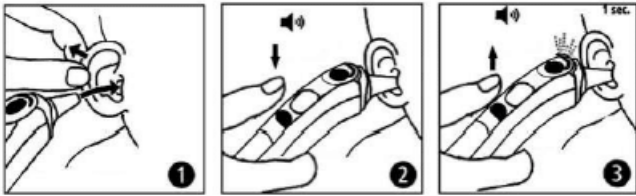


Figure 2

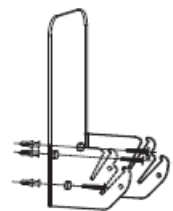
Figure 3: Display Tree

Figure 3



Figure 4: Approved Kiosk Campaign

Figure 4



If you need further assistance, please contact ADFLOW Software

#### Training at:

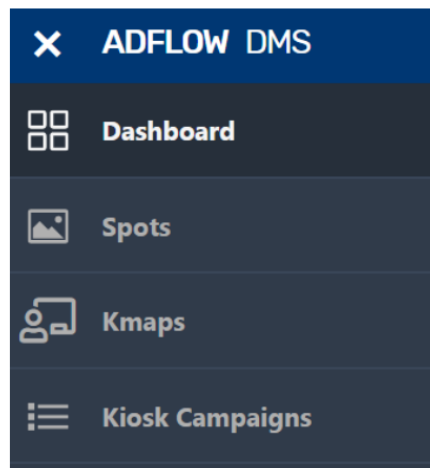
3425 Harvester Road, Suite #105, Burlington, ON L7N 3N1

**Phone:** DD4656006 Rev 00

**Date:** 15 September 2022

This quick guide provides information about how to setup and assign a timeframe to a kiosk campaign in the Adflow DMS.

1. Select Kiosk campaigns module. Refer to Figure 1.



**Figure 1: Kiosk Campaign**

2. The user can select New Campaign to create a new campaign or search for an existing campaign to modify.
3. Once the campaign is selected, it must be assigned a timeframe. Refer to Figure 2.

Time Frame Options

Dayparts

February 11, 2020 - February 28, 2020

12:00AM - 11:59PM

S

M

T

W

T

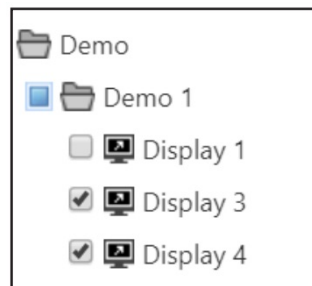
F

S

Edit

**Figure 2: Time Frame Options**

4. Click Add Kmap (can only have one KMap assigned to a campaign at a time)
- Note:** To remove a Kmap from a campaign, place a check mark next to the KMap and select Remove Selected. To add a new Kmap, select Add KMap.
5. Select the displays from the display tree. Refer to Figure 3.



**Figure 3: Display Tree**

6. Select Save and Approve. Refer to Figure 4.

Demo

Demo 1

Display 1

Display 3

Display 4

APPROVED

Reject

Archive

Delete

Duplicate

Campaign Details

Save

Campaign

Demo Kiosk Campaign

Time Frame Options

Dayparts

March 1, 2020 - March 31, 2020

12:00AM - 11:59PM

S

M

T

W

T

F

S

Edit

Kiosk Playlist

Add KMap

Remove Selected


Name	Interactive spots	Attract spots
Demo Kmap	1	2

**Figure 4: Approved Kiosk Campaign**

DD4656006  
Rev 00  
15 September 2022

ADFLOW Software Training  
3425 Harvester Road, Suite #105  
Burlington, ON L7N 3N1

## Documents / Resources

	<p><b>ADFLOW ADFLOW DMS Kiosk</b> [pdf] User Guide ADFLOW DMS Kiosk, ADFLOW, DMS Kiosk, Kiosk</p>
---	---

Manuals+.