



---

[Home](#) » [Adesso](#) » **adesso WKB-7500CB Wireless Ergonomic Scissor Switch Keyboard and Mouse Combo User Guide** 

---

# **adesso WKB-7500CB Wireless Ergonomic Scissor Switch Keyboard and Mouse Combo User Guide**

August 24,  
2025



## Contents [ [hide](#) ]

### 1 WKB-7500CB

#### 1.1 Wireless Ergonomic Scissor Switch Keyboard and Mouse Combo

##### 1.1.1 Model: WKB-7500CB

#### 1.2 QuickGuide

##### 1.2.1 LIMITED WARRANTY

##### 1.2.2 SUPPORT

##### 1.2.3 INTRODUCTION

##### 1.2.4 FEATURES

##### 1.2.5 REQUIREMENTS

##### 1.2.6 CONTENTS

##### 1.2.7 MOUSE DESCRIPTION

##### 1.2.8 KEYBOARD DESCRIPTION

###### 1.2.8.1 Inserting the batteries

###### 1.2.8.2 Pairing method

##### 1.2.9 INSTALLATION

##### 1.2.10 TIPS

##### 1.2.11 TROUBLESHOOTING

### 2 Documents / Resources

#### 2.1 References

# WKB-7500CB

## Wireless Ergonomic Scissor Switch Keyboard and Mouse Combo



Model: WKB-7500CB

## QuickGuide

[www. adesso. com](http://www. adesso. com)

## **LIMITED WARRANTY**

Adesso provides a one year limited warranty for all of its products against defects in material and workmanship.

During this period, Adesso will repair or replace any product which proves to be defective. However, Adesso will not warranty any product which has been subject to improper freight handling, shipping abuse, neglect, improper installation or unauthorized repair. The warranty will not cover products installed with components not approved by Adesso and products where the sealed assembly trace has been broken.

If you discover a defect, Adesso will, at its option, repair or replace the product at no charge to you provided you return it during the warranty period with freight charges pre-paid to Adesso. Before returning any product, you must obtain a Return Merchandise Authorization number (RMA). This RMA # must be clearly marked on the outside of the package you are returning for warranty service. Be certain to also include your name, shipping address (no PO Boxes), telephone number, and a copy of the invoice showing proof of purchase in the package.

## **SUPPORT**

We have listed most of our FAQ's (Frequently Asked Questions) at:

<http://www. adesso. com/faq. php>. Please visit our FAQ Service & Support pages before you contact our E-mail or Telephone Support.

**Email Support:** If our FAQ's do not help you resolve your issues, please email [support@adesso.com](mailto:support@adesso.com)

### **Telephone Support:**

Toll Free: [800-795-6788](tel:800-795-6788)

9:00AM to 5:00PM PST Monday – Friday

**INTRODUCTION**

This wireless ergonomic keyboard and mouse combo features responsive scissor switch keys for a comfortable, quiet typing experience and a precision mouse for smooth navigation-perfect for productivity and extended use.

**FEATURES**

Keyboard Specifications:

Key Layout:	104-Key US Layout
Connection:	2.4Ghz
Working Range:	30 Feet (10m)
Battery:	AAA*2
Hotkeys	14 hotkeys (Home, Back, Forward, Favorite, Refresh, Play/Pause Stop, Rewind, Fast forward, Volume +, Volume -, Mute, Microphone, Lock)
Keyboard Dimensions:	18.1" x 9.1" x 1.3" (460 x 232 x 34mm)
Keyboard Weight:	2.2 lbs (1000g)

Mouse Specifications:

Tracking Method:	Optical Sensor
Connectivity:	2.4Ghz RF

Range:	30 ft (10m)
DPI Resolution:	3 levels 800/1200/1600
Buttons:	6 buttons (left & right click, back & forward, DPI switch scroll wheel, middle button)
Hand Orientation:	Right
Battery:	AA battery
Dimensions:	4.7 " x 3.1" x 1.7" (120 x 80 x 42 mm)
Weight:	0.2 lb (80g)

## **REQUIREMENTS**

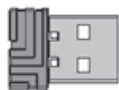
- Platform: Windows® 7/8/10/11 above Mac os 10.4 and above
- Connectivity Technology: 2.4GHz wireless

## **CONTENTS**



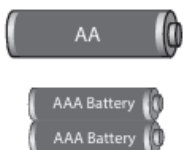
**A**

Keyboard and Mouse



**B**

USB Receiver



**C**



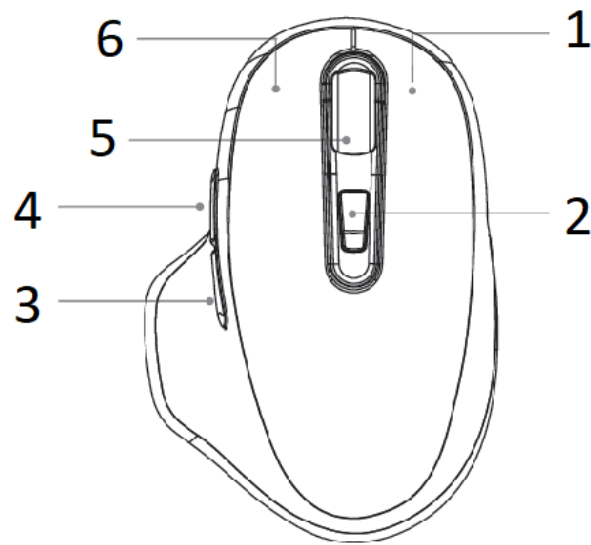
**D**

\*1 AA battery

## Quick Start Guide

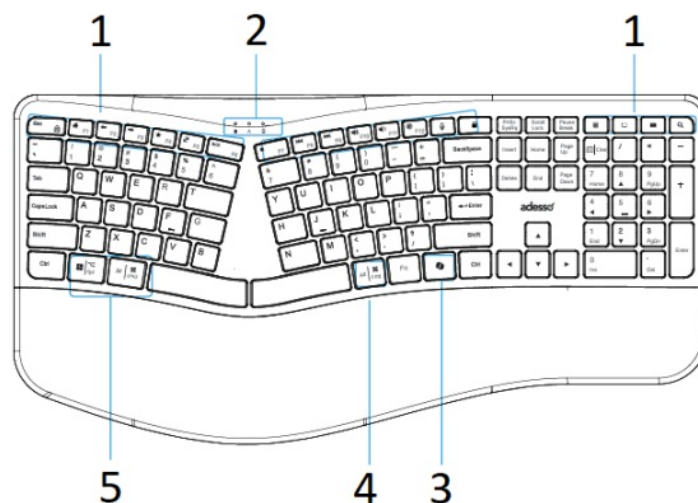
\*2 AAA batteries

### MOUSE DESCRIPTION



1. Right Click
2. DPI Switch
3. Back Button
4. Forward Button
5. Middle/Scroll Button
6. Left Click

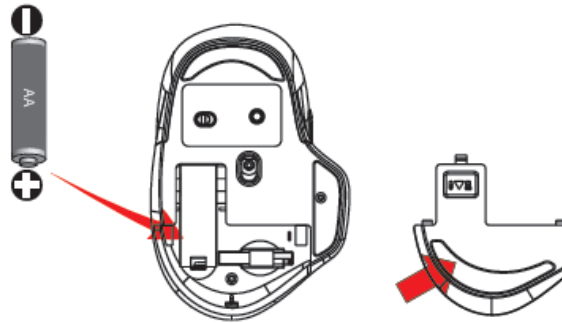
### KEYBOARD DESCRIPTION



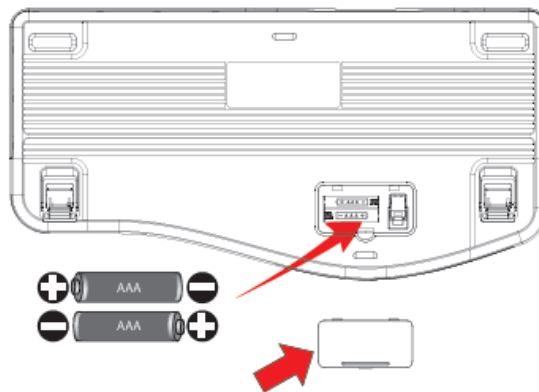
1. Shortcut Keys
2. LED Indicator  
Numlock/Capslock/Scroll lock/Low Battery

3. Copilot AI hotkey
4. Command  
Alt Key
5. Optional Command  
Win Key    Alt Key

#### Inserting the batteries



1. Remove the battery cover from the mouse and insert one AA battery and place the cover back on



1. Remove the battery cover from the keyboard and insert two AAA batteries and place the cover back on

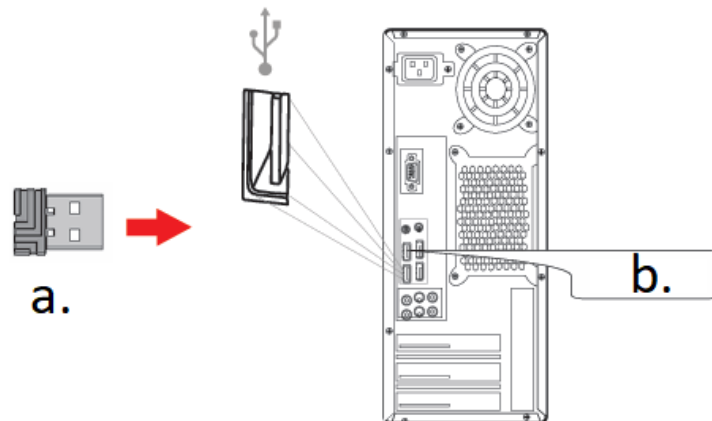
#### Pairing method

1. The receiver was paired with keyboard and mouse in advance, below is the pairing method in case it needs re-pairing.
  - a. Turn ON your available device and plug the USB receiver, Turn ON the keyboard and move it near receiver within 1 foot, press ESC + K, the LED will blinking when pairing and Stop blinking paired.

b. The same setup for the mouse, except press and hold the middle button and the right click button for 5 seconds instead.

## INSTALLATION

1. Turn ON your computer and plug in the USB receiver into your computer or device's available USB port. The system will automatically load the USB receivers plug and play feature.



a. USB Receiver

b. USB Port

2. Turn ON your keyboard and mouse, it will be ready to use.

## Multimedia Hotkeys

	Launches CoPilot
	Home
	Backward
	Forward
	Favorite
	Refresh
	Play / Pause



	Stop
	Previous Track
	Next Track
	Volume Up
	Volume Down
	Mute
	Microphone
	Lock

### **TIPS**

- When the Battery Low LED is ON, it means that the device requires new batteries
- We suggest to turn “**OFF**” the devices when leaving your desk for more than an hour to save battery life for longer lasting use.


### **TROUBLESHOOTING**

If the wireless keyboard / mouse won't work, please try the following:

1. Make sure the Devices have enough power.  
Switch the device to ON.
2. Make sure you have connected the USB receiver correctly to the device's USB ports.  
Move the devices 1 foot away from the receiver in order to avoid interference while pairing.
3. Do the pairing process once more according the Pairing method on page 6.

**Note:** Wireless phone, routers and other devices that uses 2.4GHz frequency, might cause interference with wireless keyboard and mouse. Please relocate such wireless appliances away from your keyboard and mouse.

## Documents / Resources

	<p><a href="#">adesso WKB-7500CB Wireless Ergonomic Scissor Switch Keyboard and Mouse Combo [pdf]</a> User Guide</p> <p>WKB-7500CB Wireless Ergonomic Scissor Switch Keyboard and Mouse Combo, WKB-7500CB, Wireless Ergonomic Scissor Switch Keyboard and Mouse Combo, Scissor Switch Keyboard and Mouse Combo, Switch Keyboard and Mouse Combo, Mouse Combo</p>
---	--

## References

- [User Manual](#)

Adesso

Adesso, Mouse Combo, Scissor Switch Keyboard and Mouse Combo, Switch Keyboard and Mouse Combo, Wireless Ergonomic Scissor Switch Keyboard and Mouse Combo, WKB-7500CB, WKB-7500CB Wireless Ergonomic Scissor Switch Keyboard and Mouse Combo

---

## Leave a comment

Your email address will not be published. Required fields are marked \*

Comment \*

Name

Email

---

Website

☐ Save my name, email, and website in this browser for the next time I comment.

**Post Comment**

**Search:**

e.g. whirlpool wrf535swhz

**Search**

[Manuals+](#) | [Upload](#) | [Deep Search](#) | [Privacy Policy](#) | [@manuals.plus](#) | [YouTube](#)

This website is an independent publication and is neither affiliated with nor endorsed by any of the trademark owners. The "Bluetooth®" word mark and logos are registered trademarks owned by Bluetooth SIG, Inc. The "Wi-Fi®" word mark and logos are registered trademarks owned by the Wi-Fi Alliance. Any use of these marks on this website does not imply any affiliation with or endorsement.