



ADDX CB16 Smart PTZ Camera Instruction Manual

[Home](#) » [ADDX](#) » ADDX CB16 Smart PTZ Camera Instruction Manual 

Contents

- [1 ADDX CB16 Smart PTZ Camera](#)
- [2 Product Information](#)
- [3 Product Usage Instructions](#)
- [4 Product FCC Compliance](#)
- [5 Product Appearance](#)
- [6 Packing list](#)
- [7 Product specification](#)
- [8 Install the camera](#)
- [9 Download and install the App](#)
- [10 Set up the camera](#)
- [11 FCC Statement](#)
- [12 Documents / Resources](#)
- [13 Related Posts](#)

ADDX

ADDX CB16 Smart PTZ Camera



Product Information

This user manual provides instructions for operating a device with model number 4NBSU15. The device is designed to comply with Part 15 of the FCC Rules and has been tested to ensure that it does not cause harmful interference. The device is also compliant with FCC Radiation exposure limits.

Product Usage Instructions

Before using the device, ensure that you have read and understood the user manual. Follow the instructions below to operate the device:

Power On/Off

- To turn on/off the device, press and hold the power button until the device turns on/off.

Connecting to a Network

The device can be connected to a network using an Ethernet cable or wirelessly. To connect the device to a network using an Ethernet cable, plug one end of the cable into the device's Ethernet port and the other end into a network switch or router. To connect the device to a network wirelessly, navigate to the device settings and select the appropriate network from the list of available networks.

Using the Device

The device can be used for a variety of purposes, including but not limited to accessing media files, browsing the

internet, and streaming content. Refer to the user manual for specific instructions on how to use each feature.

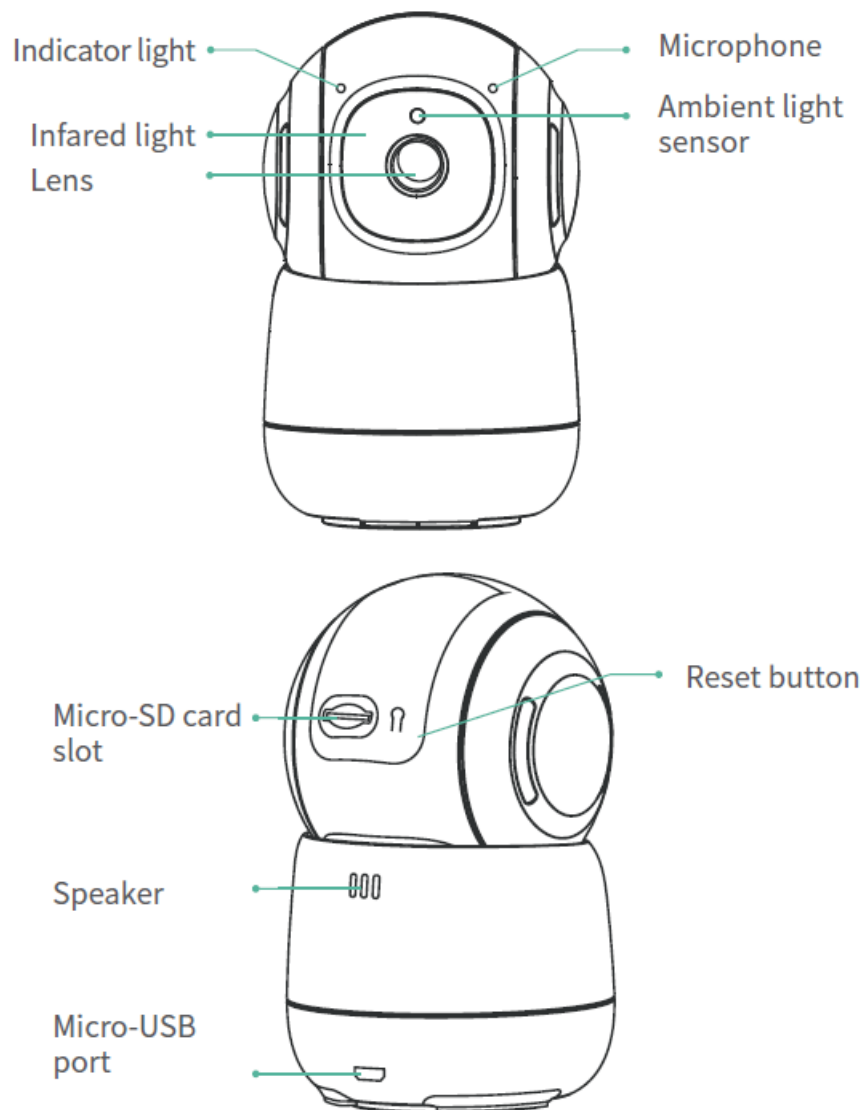
Product FCC Compliance

The device complies with Part 15 of the FCC Rules and should not cause harmful interference. However, if interference is experienced, discontinue use of the device and contact the manufacturer for assistance.

Radiation Exposure

To minimize radiation exposure, it is recommended that you maintain a minimum distance of 20cm between the device and your body while it is in operation.

Product Appearance



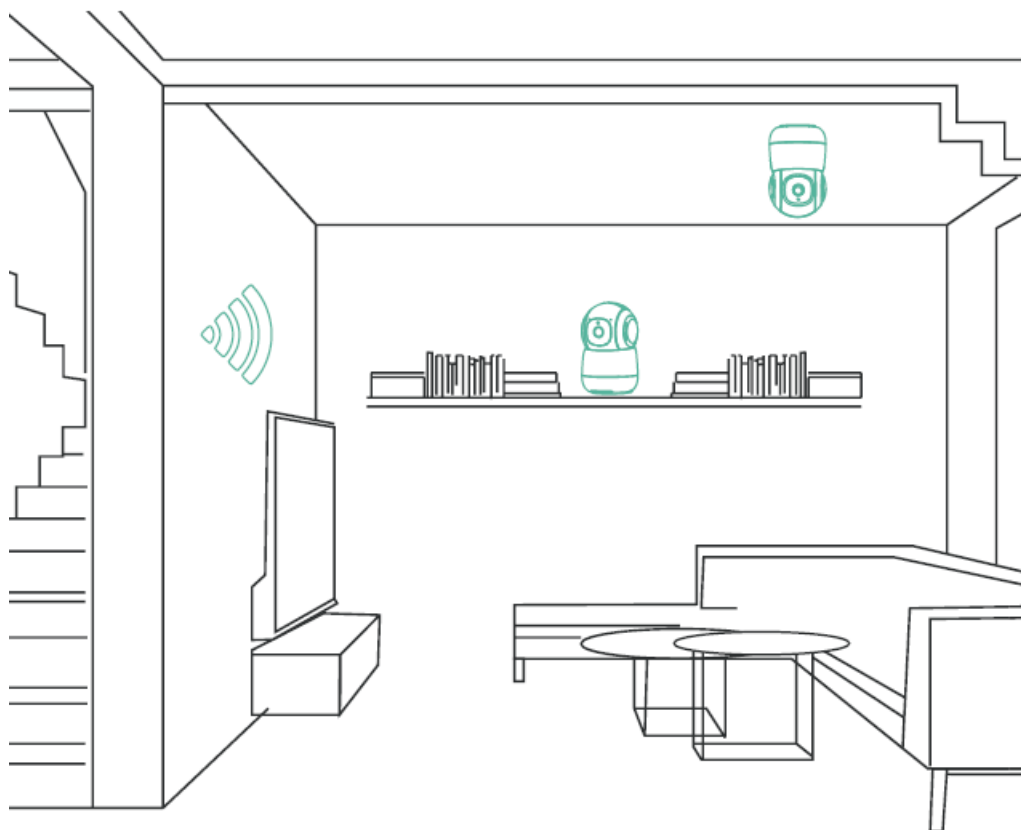
Packing list

1. Camera*1
2. Bracket*1
3. Power cable*1
4. Power adapter*1
5. Mounting kit*1

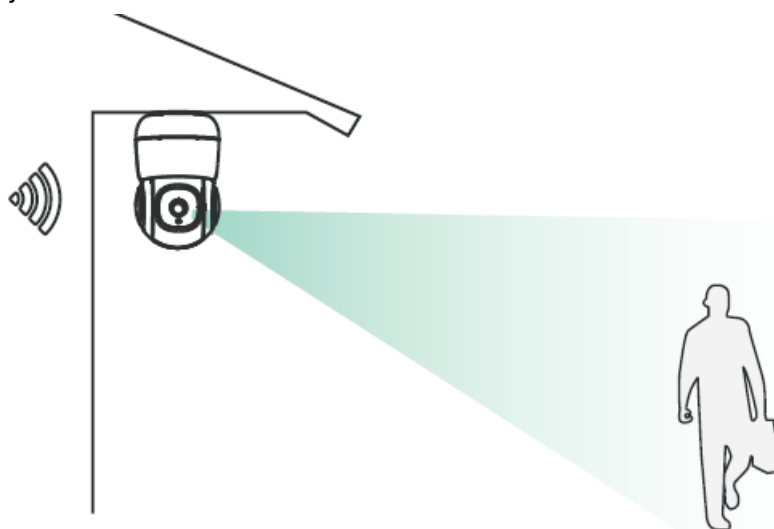
Product specification

Item	Specification
Horizontal angle	355°
Vertical angle	110°
Camera Lens	Field of view 100°
Image resolution	1080P
Video bit rate	Adaptive
Image coding standard	H.265
Audio	Duplex two-way audio intercom
Storage media	Micro SD card (Up to 128GB)
Night vision light source	Infrared light
Network	WIFI (2.4GHz 802.11b/g/n)
Power	DC 5V/1.5A
Operating temperature	-20° ~ 45°C
Size(LxWxH)	115.5mm*72.0mm*72.0mm

Install the camera

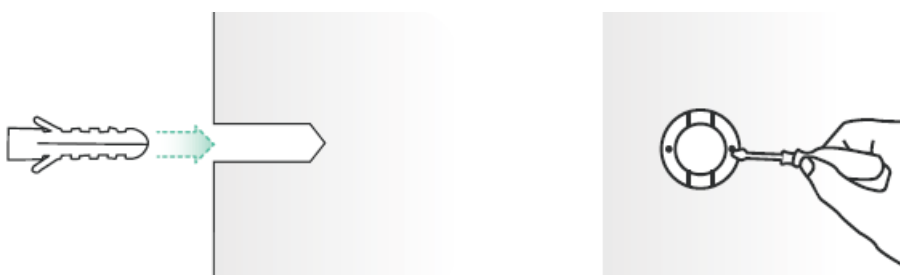


1. Select a good spot for your camera



- Select a good spot for your camera, please install the camera in a position where its view is not blocked and ensure that it is within the coverage of the Wi-Fi network.

2. Install the bracket



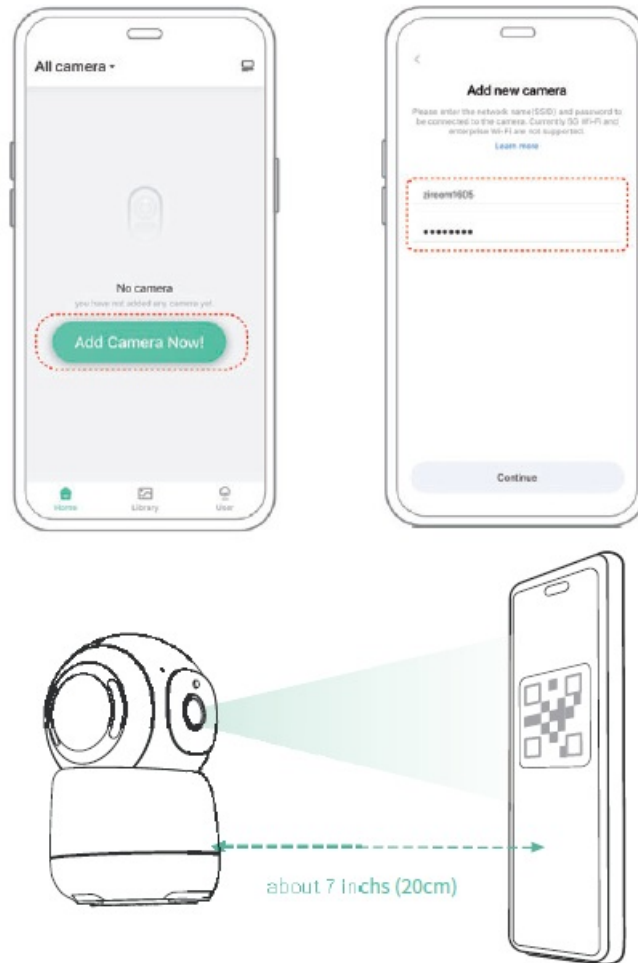
- Fix the camera to a desired location. You can directly place the camera on a flat surface, or fix the bracket to the wall or ceiling by screws, and then screw the camera to the fixed base.

Download and install the App



The camera supports Android and iOS App. For your best experience, please scan the QR code below, or search Vicoo in the App store to download and install the App, and follow the instruction to complete the user registration.

Set up the camera



Click the “Add Device” in the App and enter the Wi-Fi network name and password that you want the camera to connect. Target the camera at the QR code of the mobile App, with a distance of about 20cm (about 7 inches) until the camera emits a “Di” sound, which represents the scanning is succeeded and the pairing is started.

FCC Statement

This equipment has been tested and found to comply with the limits for a Class B digital device, pursuant to part 15 of the FCC rules. These limits are designed to provide reasonable protection against harmful interference in a residential installation. This equipment generates, uses and can radiate radio frequency energy and, if not installed and used in accordance with the instructions, may cause harmful interference to radio communications. However, there is no guarantee that interference will not occur in a particular installation. If this equipment does cause harmful interference to radio or television reception, which can be determined by turning the equipment off and on, the user is encouraged to try to correct the interference by one or more of the following measures:

- Reorient or relocate the receiving antenna.
- Increase the separation between the equipment and receiver.
- Connect the equipment into an outlet on a circuit different from that to which the receiver is connected.
- Consult the dealer or an experienced radio/TV technician for help.

To assure continued compliance, any changes or modifications not expressly approved by the party. Responsible for compliance could void the user’s authority to operate this equipment. (Example- use only shielded interface cables when connecting to computer or peripheral devices).


This equipment complies with Part 15 of the FCC Rules. Operation is subject to the following two conditions:

1. This device may not cause harmful interference.
2. This device must accept any interference received, including interference that may cause undesired operation.

FCC Radiation Exposure Statement

The equipment complies with FCC Radiation exposure limits set forth for uncontrolled enviroment. This equipment should be installed and operated with minimum distance 20cm between the radiator and your body.

Documents / Resources

	ADDX CB16 Smart PTZ Camera [pdf] Instruction Manual CB16 Smart PTZ Camera, CB16, Smart PTZ Camera, PTZ Camera, Camera
---	--