




## ADDINGTON A6001211 Modular Shelf System Instructions

[Home](#) » [ADDINGTON](#) » ADDINGTON A6001211 Modular Shelf System Instructions 



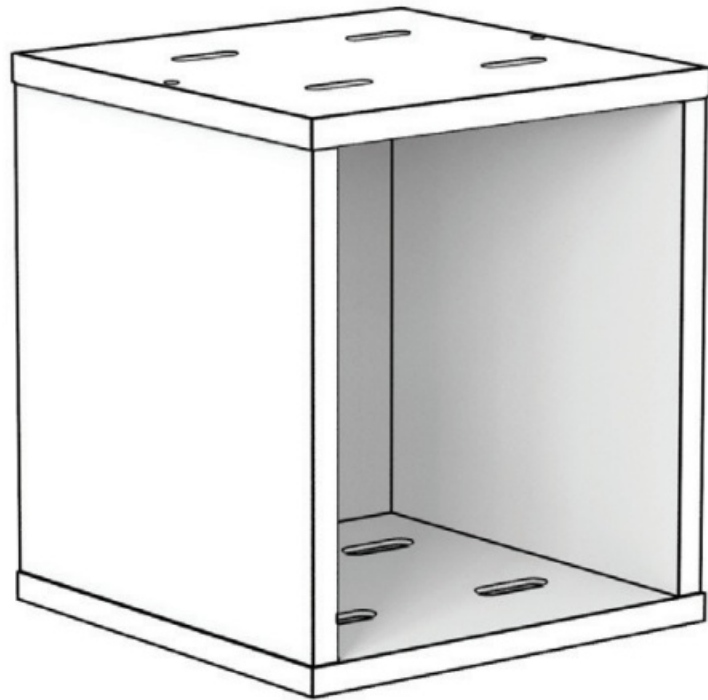
### Contents

- [1 A6001211 Modular Shelf System](#)
- [2 Part List](#)
- [3 Documents / Resources](#)
  - [3.1 References](#)

### A6001211 Modular Shelf System

**Addington Co modular Shelf system.  
SINGLE SHELF, OPEN  
WHITE**

**Care Guide:** Avoid damp locations, to clean use a dry, or lightly damp cloth. Do not use harsh cleaning products. Assemble on a soft clean surface. Have a question? Call the designer directly 612.695.0203



A6001211

### Part List



4x Bolt M6 x 25mm



1x Allen Key



4x Nut M6



pre-installed  
channel locks



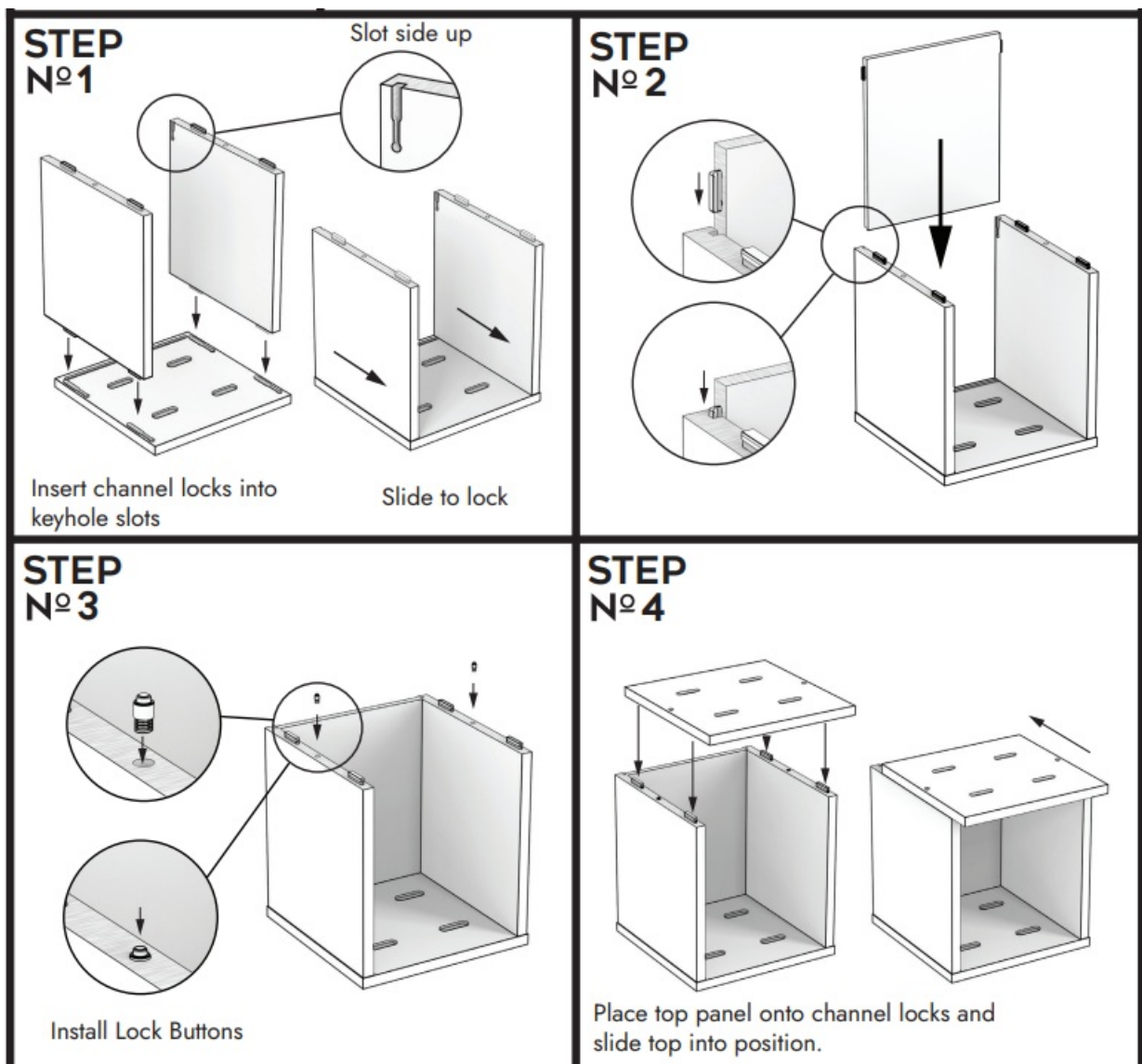
2x Lock Button



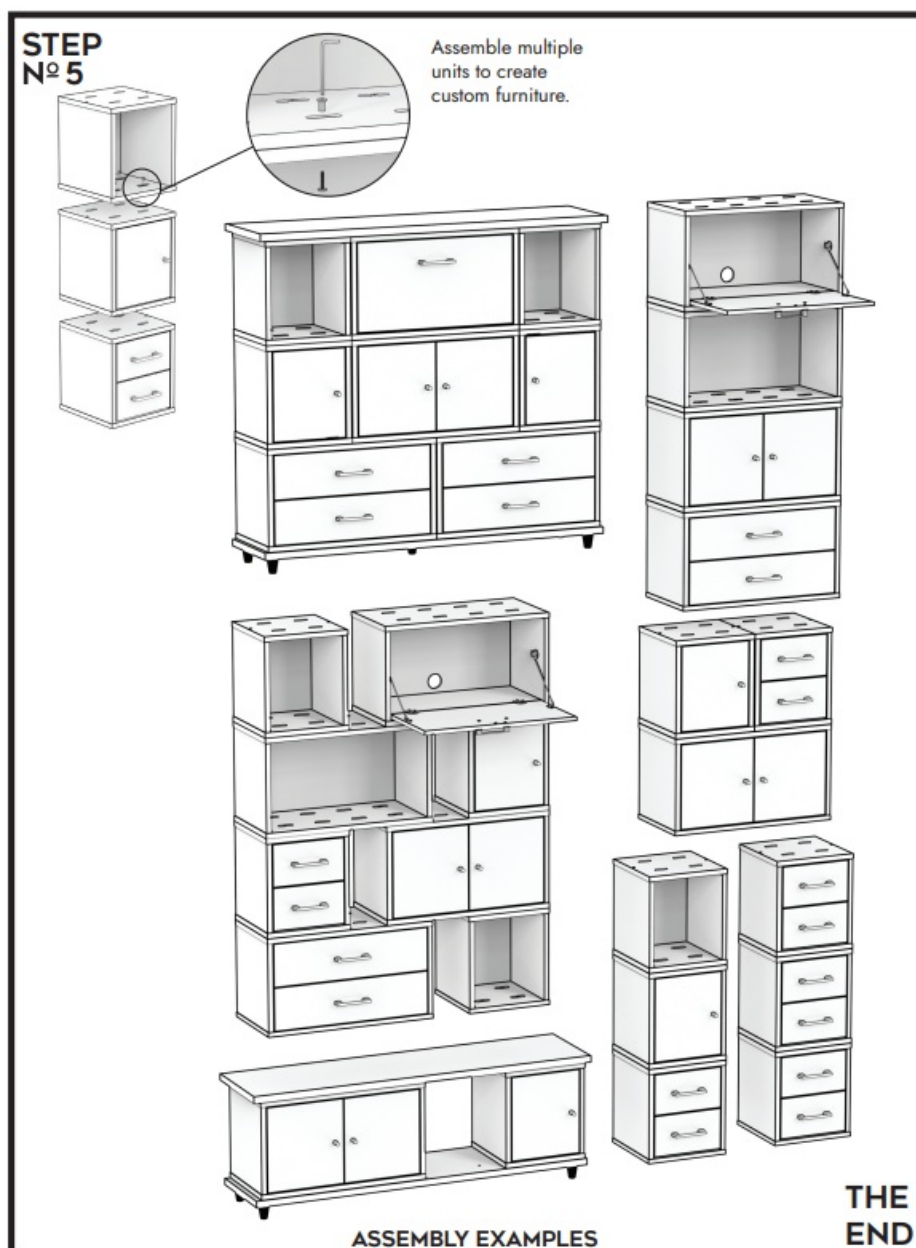
## Scan for Animated Instructions

<https://addingtonco.com/pages/a6001211-assembly>

[www.AddingtonCo.com](http://www.AddingtonCo.com)

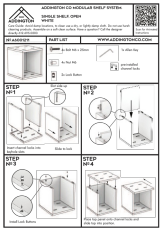


Assemble multiple units to create custom furniture.



**⚠ WARNING:** This product can expose you to chemicals including: Wood Dust, and Formaldehyde which is [are] known to the State of California to cause cancer or birth defects or other reproductive harm. For more information go to [www.P65Warnings.ca.gov/furniture](http://www.P65Warnings.ca.gov/furniture). Visit [www.addingtonco.com/pages/sustainability-and-health](http://www.addingtonco.com/pages/sustainability-and-health) for more details.

Documents / Resources



[ADDINGTON A6001211 Modular Shelf System](#) [pdf] Instructions  
A6001211 Modular Shelf System, A6001211, Modular Shelf System, Shelf System, System

## References

- [Addington Company home](#)
- [Sustainability and health – Addington Company](#)
- [P65Warnings.ca.gov/furniture](#)
- [User Manual](#)

[Manuals+](#), [Privacy Policy](#)

This website is an independent publication and is neither affiliated with nor endorsed by any of the trademark owners. The "Bluetooth®" word mark and logos are registered trademarks owned by Bluetooth SIG, Inc. The "Wi-Fi®" word mark and logos are registered trademarks owned by the Wi-Fi Alliance. Any use of these marks on this website does not imply any affiliation with or endorsement.