



ADDER AS-4CR Secure Smart Card Reader User Guide

[Home](#) » [ADDER](#) » ADDER AS-4CR Secure Smart Card Reader User Guide 

**ADDER AS-4CR Secure Smart
Card Reader User Guide**



ADDER Secure Smart Card Reader (AS-4CR) User Guide



Experts in
Connectivity
Solutions



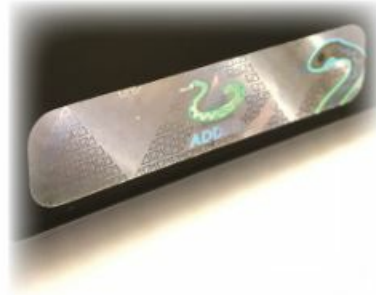
KVM Switching
Solutions

Introduction

WELCOME

Thank you for choosing an ADDER™ Secure product. This smart card reader allows the use of one smart card to logon to four computers simultaneously.

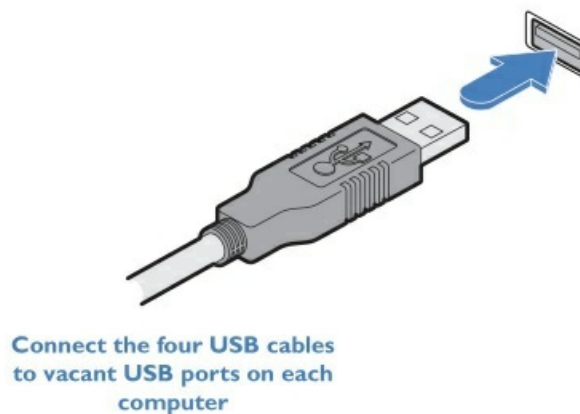
The smart card reader uses a holographic tamper evident label to provide visual indications in case of an enclosure intrusion attempt. When opening product packaging inspect the tampering evident label. If for any reason it is missing, appears disrupted, or looks different than the example shown here, please call Technical Support and avoid using that product.



CONNECTIONS

The smart card reader operates independently from any computer switches used – such as the ADDERView Secure switch range. The card reader connects to your host computers using four USB leads. Connections can be made while the computers are switched on or off.

To connect the smart card reader

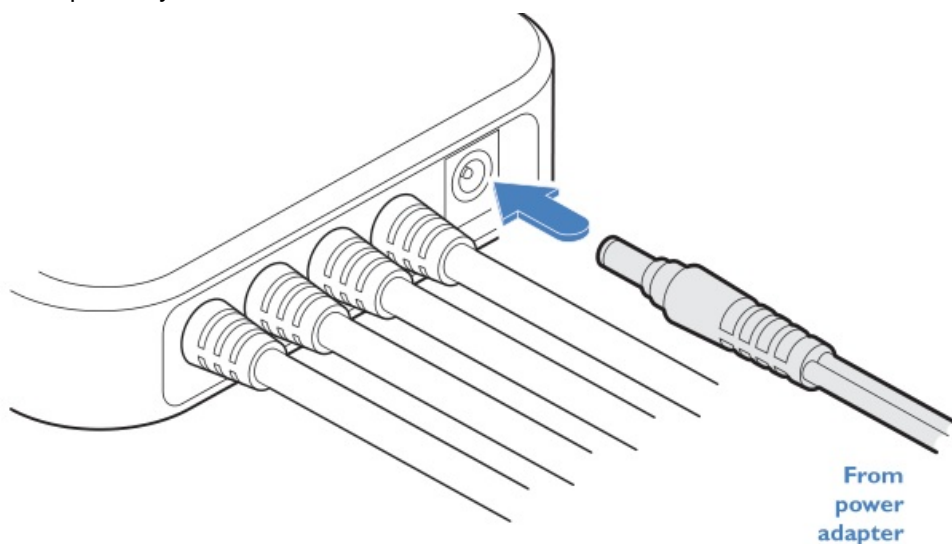


1. Connect each of the four USB (Type-A) plugs to a vacant USB socket on each host computer. The four leads are each 1m in length, so the computers will need to be near to each other and close to the operator. Standard USB lead extenders could be used, if necessary. The cable numbers correspond to the numbered card reader buttons.






2. Connect the output from the supplied power adapter to the socket on the card reader rear panel.
3. Plug the supplied power supply into a nearby main socket.

Note: As power is applied, there will be a one second beep sound and the indicators for all connected channels will flash repeatedly.



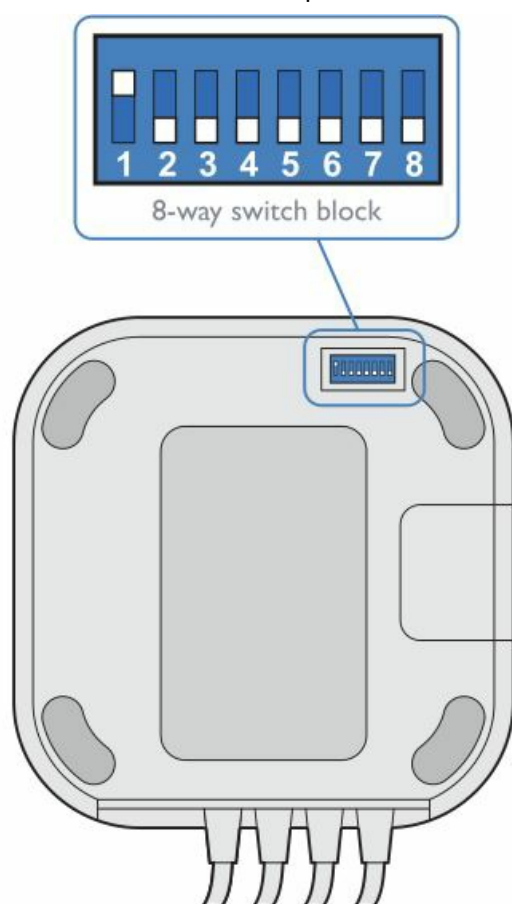
CONFIGURATION

The configuration of the smart card reader is determined by the miniature switch block which is located on the underside of the reader unit (in the top right corner when viewed with the rear panel cable pointing downwards). The switch block has eight separate switches and the operation mode is determined by which switches are set to the ON position:

#	Mode	Description	Switch settings
1	Manually associate and retain individual channels	In this mode, press the number button on the smart card reader for the computer you wish to associate your card with. The card will remain associated with the computer even when another computer channel is chosen.	
7	Manually associate with one channel at a time	In this mode, press the number button on the smart card reader for the computer you wish to associate your card with. When another button is pressed, your card will be de-associated from the initial computer and connected with the new computer.	
8	Manually associate and retain all channels	In this mode, press button 1 when you are ready for your card to be used. The reader will then associate your card with all connected computers.	

To configure the smart card reader

1. With the smart card reader powered on or off, locate the switch block on the underside of the unit.



2. Gently remove the switch block cover.
3. Change the on/off status of the switches as shown left to match the required operation mode.
4. Replace the switch block cover.

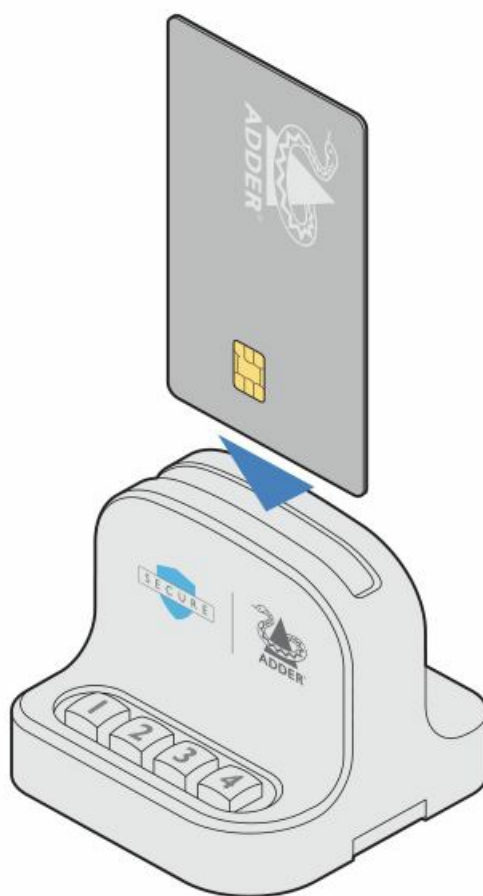
USING THE SMART CARD READER

The smart card reader complements the function of secure KVM switches but operates completely independently of the switches themselves. The smart card reader allows you to use a single smart card to authenticate your identity on all four connected computers simultaneously without the need for separate readers. Note: The buttons on the smart card reader are used to associate your smart card with particular computers, not to change channels on a KVM switch.

The precise manner in which the smart card reader operates is determined by the settings of the DIP switch, which

is located on the underside of the unit (see page 2).

To use the smart card reader



1. Orientate your smart card so that its chip is facing towards you and the 'chip end' of the card is closest to the reader's slot.



2. Gently insert your smart card into the reader's slot until it will go no further.
3. The next step depends upon how your smart card reader is configured:
 - If your reader is set to its default operation mode (6), no further action will be required because your smart card will automatically be associated with one or more of the computers. This will be done either as soon as your card is inserted or when a computer requests a card, depending on which mode is selected (see page 2

for details of all modes). The button indicator will change from flashing to 'on' once association with the connected computer has completed.

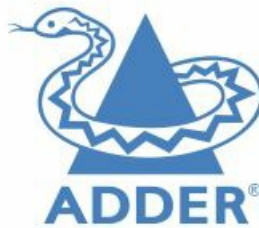
- If your reader is operating in certain modes (1, 7 or 8), you will need to press one or more buttons on the front panel of the reader to associate your card with some or all of the connected computers. The pressed button indicator will flash for five seconds while your card is associated with that computer and will then remain on.

To de-associate your smart card from a particular computer

1 Press and hold the button for the computer that you wish to de-associate your card from. When the indicator for that channel extinguishes, release the button.

If the smartcard is removed

If the smartcard is removed from the card reader, the action will immediately de- associate it from all coupled computers. As a result, smartcard-aware applications will notice its absence and respond accordingly. For example, a Windows PC that is configured to require smartcards for user logon may be set to lock the user's desktop once the smartcard is removed.



www.adder.com

© 2023 Adder Technology Limited
All trademarks are acknowledged.
Part No. MAN-000011 • Release 1.1

Documentation by:



www.ctxd.com

Contents

1 Documents /

Resources

1.1 References

Documents / Resources



[ADDER AS-4CR Secure Smart Card Reader](#) [pdf] User Guide

AS-4CR Secure Smart Card Reader, AS-4CR, Secure Smart Card Reader, Smart Card Reader, Card Reader, Reader

References

- [The IP KVM People | Adder Technology](#)
- [Technical Authors | Technical Writers | Technical Writer | Technical Author | Illustrators | Documentation](#)
- [User Manual](#)

[Manuals+](#), [Privacy Policy](#)

This website is an independent publication and is neither affiliated with nor endorsed by any of the trademark owners. The "Bluetooth®" word mark and logos are registered trademarks owned by Bluetooth SIG, Inc. The "Wi-Fi®" word mark and logos are registered trademarks owned by the Wi-Fi Alliance. Any use of these marks on this website does not imply any affiliation with or endorsement.