



AdderLink XDIP High Performance IP KVM Extender or Matrix Solution User Guide

[Home](#) » [ADDER](#) » AdderLink XDIP High Performance IP KVM Extender or Matrix Solution User Guide 

AdderLink XDIP High Performance IP KVM Extender or Matrix Solution User Guide



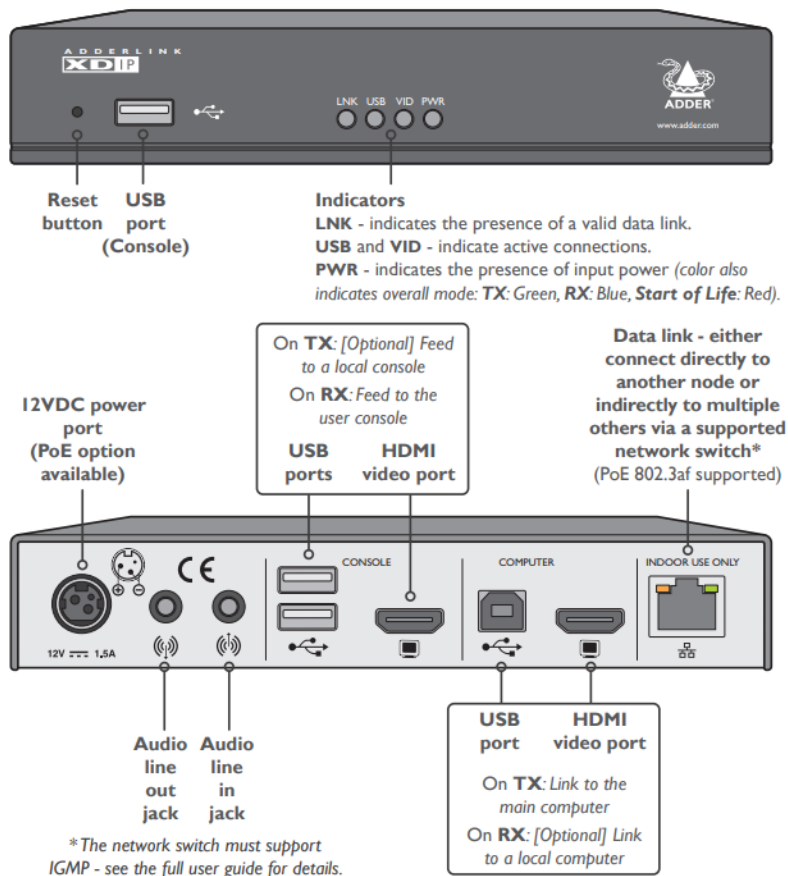
Welcome

Thank you for choosing the AdderLink XDIP extenders. These flexible modules (nodes) can be configured either as transmitters or receivers and then mixed in a variety of combinations to suit.

Contents

- 1 Overview
- 2 Choosing a channel
- 3 Changing the hotkeys
- 4 Restoring an XDIP node
- 5 Using Instructions
- 6 Warranty
- 7 Documents / Resources
 - 7.1 References
- 8 Related Posts

Overview



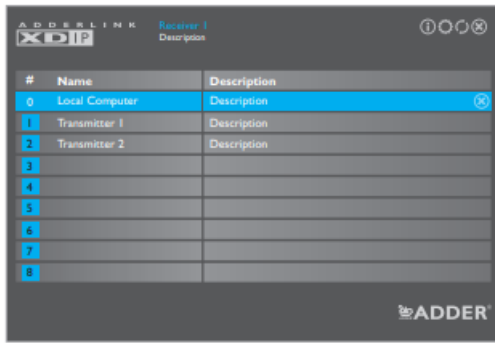
Connect and power on all required nodes. On the console connected to an unconfigured node, that will become a receiver, you should see the Welcome screen. The node's PWR indicator should be red at this stage. If not, restore the node to its default settings (see the rear page). Continued overleaf.

Choosing a channel

From your receiver, you can switch between a locally connected computer (if present) and any number of linked transmitters in two main ways:

using the channel list

The channel list shows all of your switching options:



1. If the channel list is not already displayed, press and hold the CTRL and ALT keys and then press C Ü
2. Click on the required channel (or use the up/down arrow keys and Enter) to connect.

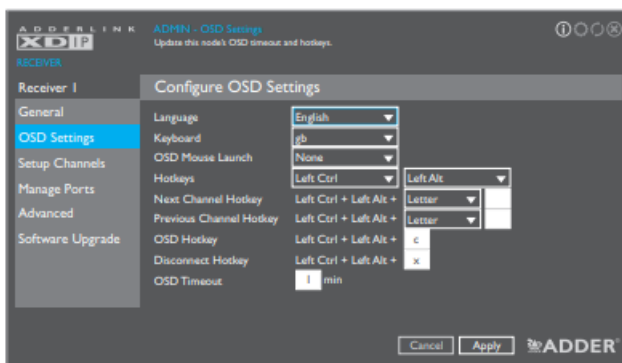
using hotkeys

Hotkeys offer the quickest way to switch between channels:

Press and hold the CTRL and ALT keys and then press the number for the required channel, e.g. 0 for the locally connected computer, 1 for the first transmitter in the list, 2 for the second, etc.

Changing the hotkeys


You can change the default hotkeys to suit your installation:



1. Display the channel list and then click the icon. Enter the admin password.
2. Choose the OSD Settings page Ü
3. Here you can alter all aspects of hotkey operation.
4. For more details, please see the AdderLink XDIP full user guide

Restoring an XDIP node

In order to obtain the full benefit of the configuration wizard when creating a new installation, it may be necessary to restore the default settings to your XDIP nodes. This can be done in two ways:

- [Receivers only] Display the channel list and then click the  icon. If requested, enter the admin password

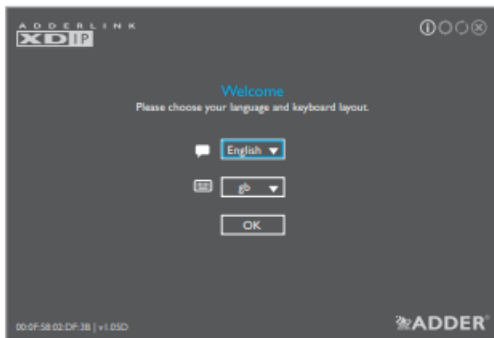
and then choose the Software Upgrade page. Click the Restore button.

- Use a narrow implement (such as a straightened out paper clip) to press and hold the recessed reset button on the front panel (while power is applied) for fourteen seconds.

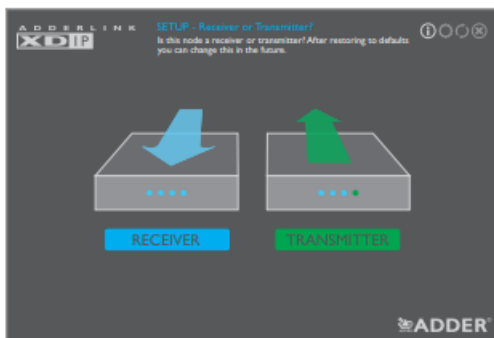
Note: The reset button is within the hole to the left of the USB socket. The front panel indicators will flash and then the Recovery page will be displayed. Click the Restore button.

Using Instructions

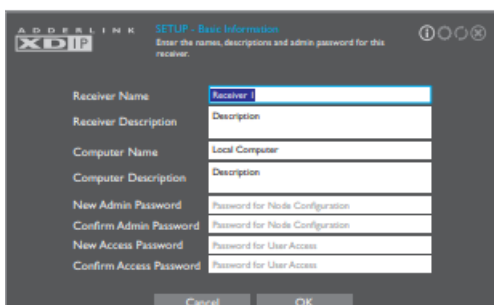
START HERE: Using the screen, keyboard and mouse connected to a node that will be a receiver, you should see the Welcome screen:



1. If necessary, change the language and keyboard layout. Click OK:

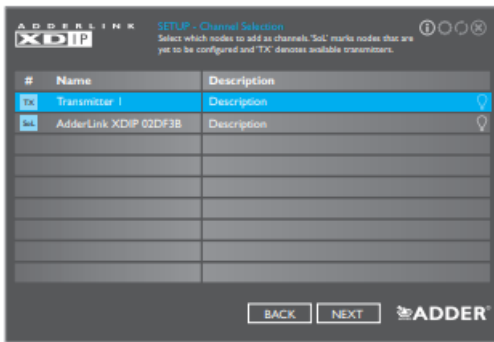


2. Click the RECEIVER option to make this node a receiver:



3. Enter the details for this receiver, including the password (required for admin access to the configuration details). Click OK.

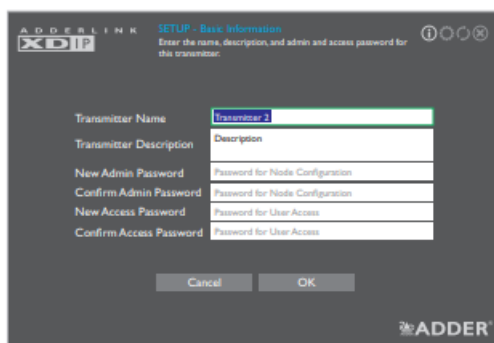
You will now see a list of all discovered XDIP nodes. If an entry shows SoL (Start of Life) then it is unconfigured (that node's PWR indicator will also show red). Otherwise, any configured XDIP transmitter node will show TX:



Notes

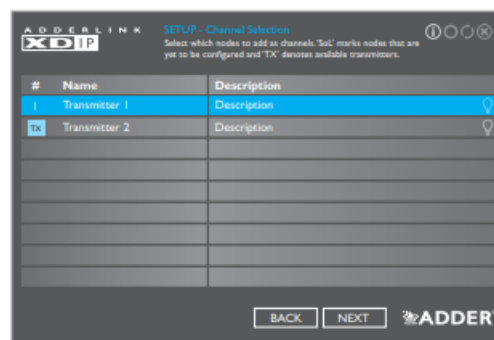
- If you are adding several nodes at once and need to identify a particular node, click the icon to flash the front panel indicators of the chosen node in the list.
- If nodes have been added since displaying the list, click the icon to refresh the list.
- Passwords can be left blank, but this is not recommended.

4. Click an entry marked SoL to configure it as a transmitter:

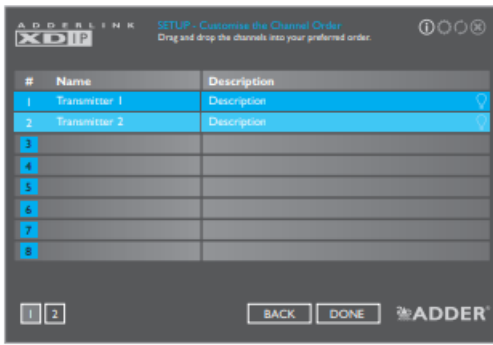


5. Enter the details for this transmitter, including two separate passwords: one for admin configuration purposes and the other to restrict user access to this transmitter. Click OK.

The discovered nodes will be again listed, showing any changes you have made to the name(s) and description(s):



6. Repeat steps 4 and 5 for each listed SoL node.
7. Ensure that all the transmitters (8 maximum), to which you wish to connect from this receiver, show a number in the left hand column. If an entry shows TX, it is yet to be connected. Click on the entry to connect it with this receiver; if a password is set on the transmitter, you will be asked to enter it. Once successfully connected, the TX for the entry will change to a number.
8. When all transmitters have been connected, click NEXT.
9. You can now optionally change the order of transmitters in the channel list. Click, hold and drag an entry to the required slot:



10. When all transmitters are in the required order, click DONE.
11. The receiver will now show the Channel List (see the rear page). From here you can choose between a local computer (if connected to your receiver) or any of the associated transmitters.

Warranty

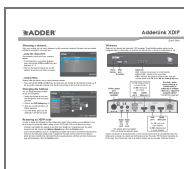
Adder Technology Ltd warrants that this product shall be free from defects in workmanship and materials for a period of two years from the date of original purchase. If the product should fail to operate correctly in normal use during the warranty period, Adder will replace or repair it free of charge. No liability can be accepted for damage due to misuse or circumstances outside Adder's control. Also Adder will not be responsible for any loss, damage or injury arising directly or indirectly from the use of this product. Adder's total liability under the terms of this warranty shall in all circumstances be limited to the replacement value of this product. If any difficulty is experienced in the installation or use of this product that you are unable to resolve, please contact your supplier.



Web: www.adder.com
 Contact: www.adder.com/contact-details
 Support: www.adder.com/support



© 2022 Adder Technology Limited • All trademarks are acknowledged.
 Part No. MAN-QS-XDIP-ADDER_V1.2

Documents / Resources



[ADDER AdderLink XDIP High Performance IP KVM Extender or Matrix Solution](#) [pdf] User Guide
 AdderLink XDIP, High Performance IP KVM Extender or Matrix Solution, AdderLink XDIP High Performance IP KVM Extender or Matrix Solution

References

-  [The IP KVM People | Adder Technology](#)
-  [How can we help you? | Adder Technology](#)