



SU800 Solid State Drive



ADATA SU800 Solid State Drive Installation Guide

[Home](#) » [ADATA](#) » ADATA SU800 Solid State Drive Installation Guide 

Contents

- [1 ADATA SU800 Solid State Drive](#)
- [2 BEFORE INSTALLATION](#)
- [3 INSTALLATION](#)
- [4 Specifications](#)
- [5 Frequently Asked Questions \(FAQ\)](#)
- [6 Documents / Resources](#)
 - [6.1 References](#)
- [7 Related Posts](#)



ADATA SU800 Solid State Drive



The cover product image is for illustration purposes only. This manual is applicable to all ADATA 2.5" SSD products.

BEFORE INSTALLATION

1. GATHER THE THINGS YOU'LL NEED

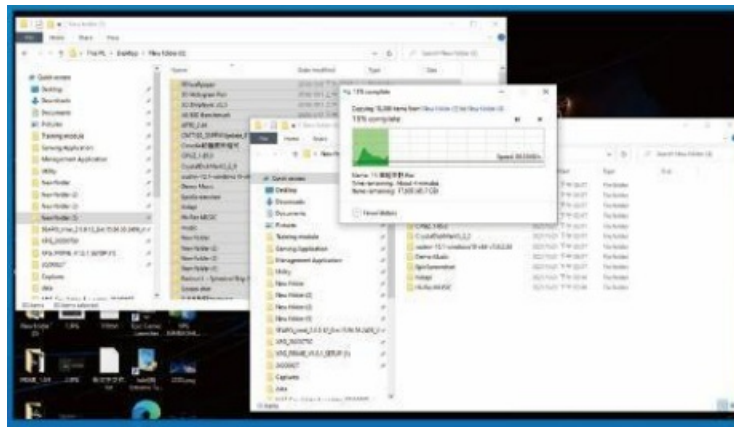
PC, Phillips screwdriver, and ADATA 2.5" SATA SSD

- Please use a standard Phillips screwdriver (3.5mm) for disassembling the case.



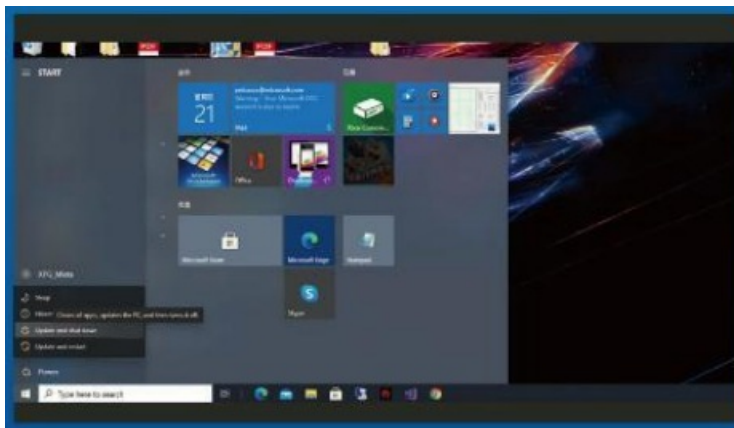
2. BACK UP YOUR DATA

Make sure to backup the important data on your PC to an external device, such as an external HDD, before starting installation.



3. POWER OFF YOUR PC

After backing up your data, power off your PC to avoid data loss or damage to other components during installation.



4. SWITCH OFF THE POWER SWITCH AND UNPLUG POWER CORD

This action is necessary to discharge residual power that can damage your PC and its components.



INSTALLATION

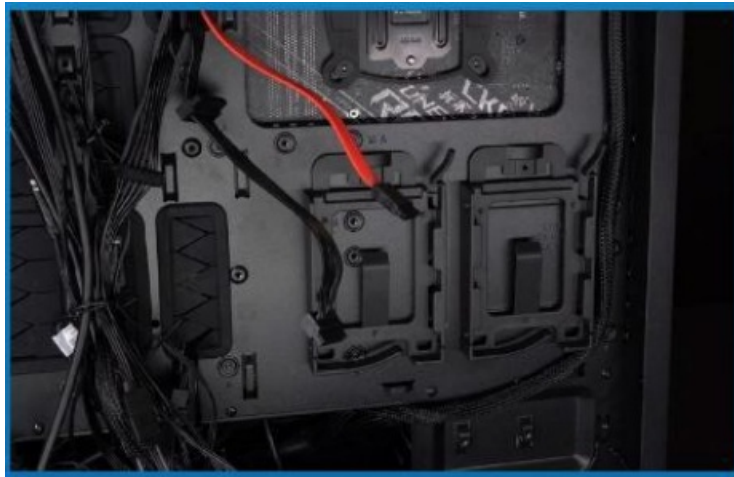
1. REMOVE THE PC CASE

Use the standard Philips screwdriver to remove the screws and then remove the PC case



2. CONFIRM THE POSITION OF THE 2.5" SLOT AND REMOVE THE BRACKET

- Please check the side of the motherboard to find the unused 2.5" bracket



3. REMOVE THE BRACKET AND CABLE

- Each PC has different ways to fix drives. There may be drawers or brackets to place the solid state hard drives. The way to remove them will involve pulling out the bracket or support frame.
- When removing the stand, please check the screws on the top or side carefully, these screws may be fixed on it.



4. CONNECT CABLES AND ATTACH BRACKET TO THE NEW 2.5" SATA SSD. PUT THE BRACKET IN THE SLOT TO FIX DRIVES

There is a row of pins on the cable as well as on the SSD. Align to the correct orientation and place the bracket back into the slot.

- The slot has a foolproof design. Please insert the SSD in the direction corresponding to the pins on the solid state drive and the slot.. Do not insert it forcibly to avoid damage to the product.



5. RESEMBLE THE CASE

- Do not overtighten the screws as it may damage the screws ad back plate



6. PLUG IN THE POWER CORD AND POWER ON THE PC TO COMPLETE INSTALLATION



CUSTOMER SERVICE AND TECHNICAL SUPPORT

- Contact Us: <https://www.adata.com/en/support/contact-us/>

Specifications

- **Product:** ADATA 2.5 SATA SSD
- **Size:** 2.5 inches
- **Support:** Desktop and Laptop PCs
- **Screwdriver Requirement:** Phillips screwdriver (3.5mm)

Frequently Asked Questions (FAQ)

Q: What should I do before installing the ADATA 2.5 SATA SSD on my desktop PC?

A: Before installation, make sure to back up your data, power off your PC, switch off the power switch, and unplug the power cord to avoid any damage.

Q: How do I know where to place the 2.5 SATA SSD on my desktop PC?

A: To find the correct position, remove the PC case, locate the 2.5 bracket on the motherboard, and follow the instructions on connecting cables and attaching the bracket to the SSD.

Documents / Resources

| | |
|---|---|
|  | ADATA SU800 Solid State Drive [pdf] Installation Guide SU800 Solid State Drive, SU800, Solid State Drive, State Drive, Drive |
|---|---|

References

-  [ADATA \(China\)](#)
-  [Kontakt | ADATA \(Germany\)](#)
-  [Contact Us | ADATA \(Global\)](#)
-  [Contactar con Nosotros | ADATA \(Spain\)](#)
-  [ADATA \(Japan\)](#)
-  [ADATA \(Korea\)](#)
-  [Contacte-nos | ADATA \(Portugal\)](#)
-  [Контакты | ADATA \(CIS\)](#)
-  [İletişim | ADATA \(Turkey\)](#)
-  [ADATA \(Taiwan\)](#)
- [User Manual](#)

[Manuals+](#), [Privacy Policy](#)

This website is an independent publication and is neither affiliated with nor endorsed by any of the trademark owners. The "Bluetooth®" word mark and logos are registered trademarks owned by Bluetooth SIG, Inc. The "Wi-Fi®" word mark and logos are registered trademarks owned by the Wi-Fi Alliance. Any use of these marks on this website does not imply any affiliation with or endorsement.