



# ADATA M.2 SSD Solid State Drive Instruction Manual

[Home](#) » [ADATA](#) » ADATA M.2 SSD Solid State Drive Instruction Manual 

## Contents

- [1 ADATA M.2 SSD Solid State Drive](#)
- [2 Product Usage Instructions](#)
- [3 FAQ](#)
- [4 BEFORE INSTALLATION](#)
- [5 INSTALLATION](#)
- [6 INSTALLING AN M.2 SSD ON A LAPTOP PC](#)
- [7 HOW TO INSTALL AN M.2 SSD ON PLAYSTATION ®](#)
- [5](#)
- [8 Documents / Resources](#)
  - [8.1 References](#)



## ADATA M.2 SSD Solid State Drive



## Specifications

- **Brand:** ADATA
- **Product:** M.2 SSD

- **Dimensions:** 1.85-1.98mm (thickness)

## Product Usage Instructions

### Before Installation

1. **Gather the Things You'll Need:** PC, Phillips screwdrivers, and ADATA M.2 SSD.
  - Please use a standard Phillips screwdriver (3.5mm) for disassembling the case and a smaller Phillips screwdriver for installing the M.2 SSD.
2. **Back Up Your Data:** Ensure to backup important data on your PC to an external device before installation.
3. **Power Off Your PC:** Turn off your PC to prevent data loss or damage to components.
4. **Switch Off the Power Switch and Unplug Power**  
**Cord:** Discharge residual power that can harm your PC.

### Installation

1. **Remove the PC Case:** Use the standard Philips screwdriver to take off the screws and then remove the case.
2. **Locate the M.2 PCIe Slot and Confirm Screws:**  
Find the slot, ensure fit, and check for screws.
3. **Align the M.2 Slot and Insert the SSD:** Remove screws on the motherboard, align notches on SSD with ridges in the slot, insert at an angle, and secure in place.
4. **Fasten the Screws to Secure the SSD:** Use the small Phillips screwdriver to secure the SSD into place.
5. **Reassemble the Case:** Avoid overtightening screws to prevent damage.

### FAQ

#### **Q: What should I do if I encounter difficulties during installation?**

**A:** If you face challenges during installation, please refer to the user manual of your specific PC model or contact our support team at [this link](#).

### INSTALLING AN M.2 SSD ON A DESKTOP PC

The cover product image is for illustration purposes only. This manual is applicable to all ADATA M.2 SSD products.

### BEFORE INSTALLATION

#### 1. GATHER THE THINGS YOU'LL NEED

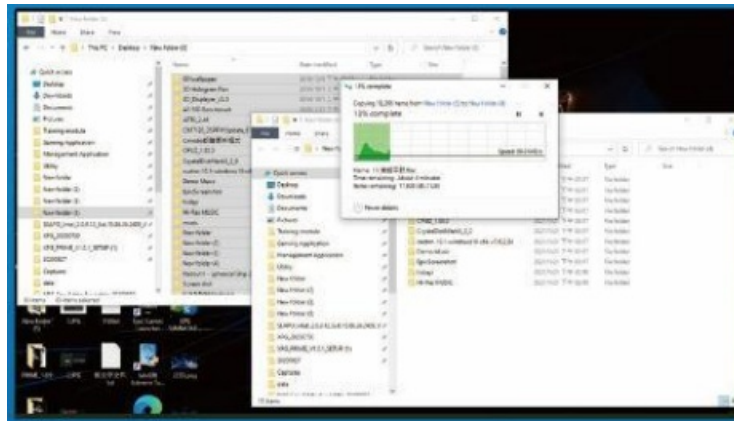
PC, Phillips screwdrivers, and A DATA M.2 SSD

Please use a standard Phillips screwdriver (3.5mm) for disassembling the case; and a smaller Phillips screwdriver for installing the M.2 solid state drive as it uses screws with a diameter of 1.85 1.98mm



## 2. BACK UP YOUR DATA

Make sure to backup the important data on your PC to an external device, such as an external HDD, before starting installation.



## 3. POWER OFF YOUR PC

After backing up your data, power off your PC to avoid data loss or damage to other components during installation.



## 4. SWITCH OFF THE POWER SWITCH AND UNPLUG POWER CORD

This action is necessary to discharge residual power that can damage your PC and its components.

\*The location of the power switch may vary by PC, please check your user manual.



## INSTALLATION

### 1. REMOVE THE PC CASE

Use the standard Philips screwdriver to remove the screws and then remove the PC case



### 2. LOCATE THE M.2 PCIE SLOT AND CONFIRM THERE ARE SCREWS

Locate the M.2 PCIe slot, ensure the SSD will fit, and confirm there are screws present.

The location of slots may vary by PC. Please check your PC's user manual for more information.

Generally speaking, the screws that secure the SSD in place will be installed on the motherboard when the PC is shipped from the factory.



### 3. ALIGN THE M.2 SLOT AND INSERT THE SOLID-STATE DRIVE

Use your small Phillips screwdriver to remove the screws on the motherboard. Align the notches in the SSD with the ridges in the PCIe slot, then insert at an angle. Give it a final push to ensure it is securely in place.

\* The slot has a foolproof design. Please insert the SSD in the direction corresponding to the pins on the solid

state drive and the slot. Do not insert it forcibly to avoid damage to the product.



4. FASTEN THE SCREWS TO SECURE THE SSD

Use your small Phillips screwdriver to secure the SSD into place.



5. RESEMBLE THE CASE

\*Do not overtighten the screws as it may damage the screws ad back plate



6. PLUG IN THE POWER CORD AND POWER ON THE PC TO COMPLETE INSTALLATION



## INSTALLING AN M.2 SSD ON A LAPTOP PC

### BEFORE INSTALLATION

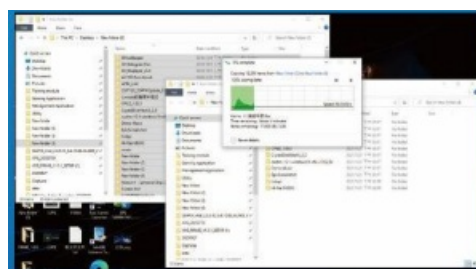
#### 1. GATHER THE THINGS YOU'LL NEED PC, Phillips screwdrivers, and ADATA M.2 SSD

Please use a standard Phillips screwdriver (3.5mm) for disassembling the case; and a smaller Phillips screwdriver for installing the M.2 solid state drive as it uses screws with a diameter of 1.85-1.98mm.



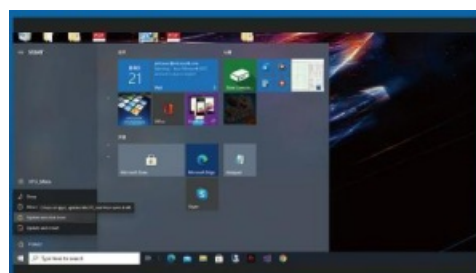
#### 2. BACK UP YOUR DATA

Make sure to backup the important data on your PC to an external device, such as an external HDD, before starting installation.



#### 3. POWER OFF YOUR PC

After backing up your data, power off your PC to avoid data loss or damage to other components during installation.

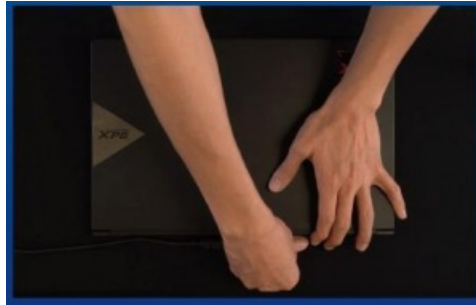


#### 4. UNPLUG POWER CORD AND BATTERY

This action is necessary to discharge residual power that can damage your PC and its components.



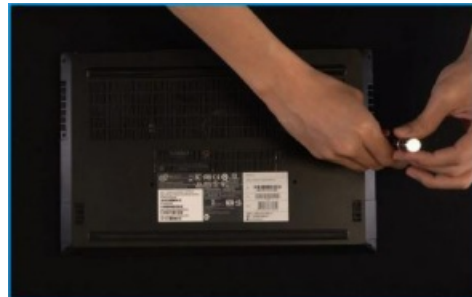
\* The battery removal step applies only to laptops when it's possible to remove the battery. To see how to remove the battery, refer to your user manual.



## INSTALLATION

1. REMOVE YOUR PC'S BACK PLATE Use your standard Phillips screwdriver to remove the screws from the back plate.

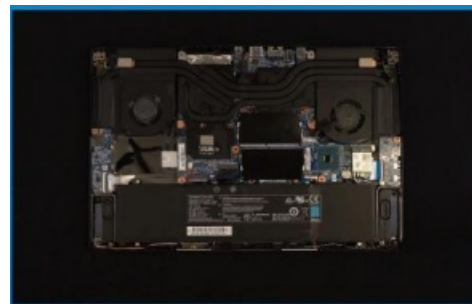
\* If you are unsure how to do this, refer to your user manual



2. LOCATE THE M.2 PCIE SLOT AND CONFIRM THERE ARE SCREWS Locate the M.2 PCIe slot, ensure the SSD will fit and confirm there are screws present.

\* The location of slots may vary by PC. Please check your PC's user manual for more information.

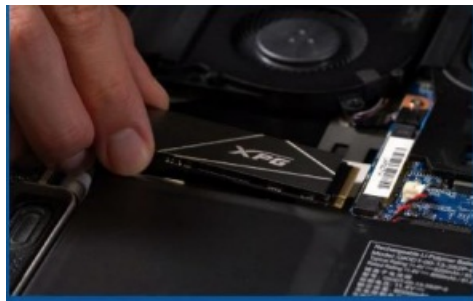
\*\*Generally speaking, the screws that secure the SSD in place will be installed on the motherboard when the laptop is shipped from the factory.



3. ALIGN THE M.2 SLOT AND INSERT THE SOLID-STATE DRIVE

Use your small Phillips screwdriver to remove the screws on the motherboard. Align the notches in the SSD with the ridges in the PCIe slot, then insert at an angle. Give it a final push to ensure it is securely in place.

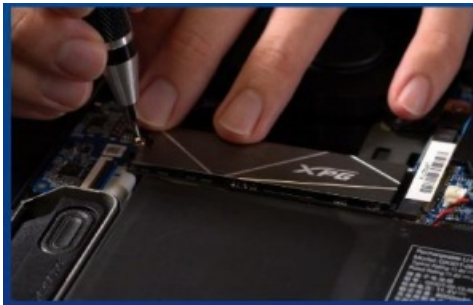
\* The slot has a foolproof design. Please insert the SSD in the direction corresponding to the pins on the solid state drive and the slot. Do not insert it forcibly to avoid damage to the product.



#### 4. FASTEN THE SCREWS TO SECURE THE SSD

Use your small Phillips screwdriver to secure the SSD into place.

\* Do not overtighten the screws

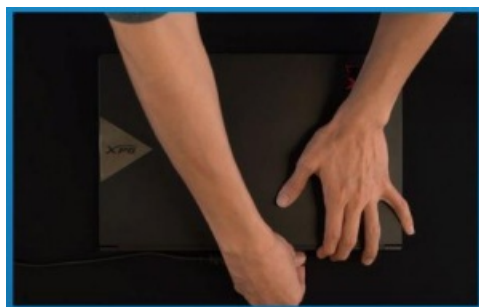


#### 5. SECURE THE BACK PLATE INTO PLACE

\* Do not overtighten the screws as it may cause damage



#### 6. PLUG IN THE POWER CORD AND POWER ON THE PC TO COMPLETE INSTALLATION



## HOW TO INSTALL AN M.2 SSD ON PLAYSTATION® 5

### BEFORE INSTALLATION

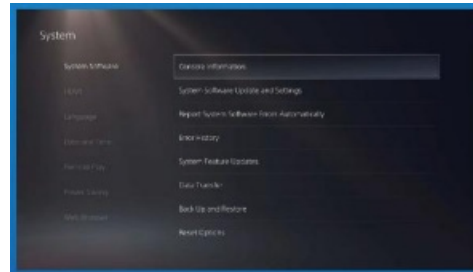
#### WHAT YOU'LL NEED :

- ADATA M.2 SSD
- Phillips head screwdriver
- PS5

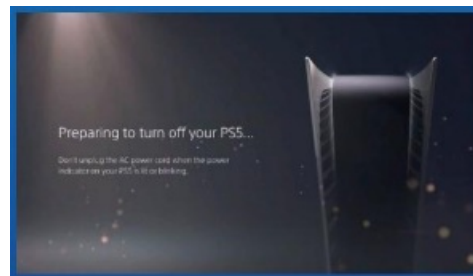




1. ENSURE YOU HAVE THE LATEST PS5 SOFTWARE UPDATES.



2. TURN OFF YOUR PS5.



3. DISCONNECT ALL CABLES AND DEVICES.



## INSTALLATION

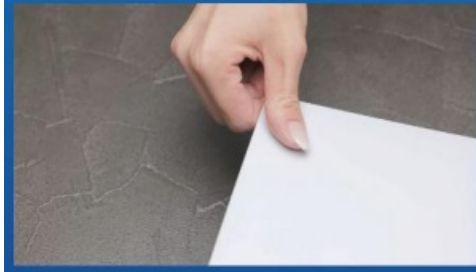
1. LAY THE PS5 FLAT WITH THE LOGO SIDE FACING DOWNWARDS.



2. FIRMLY GRAB THE UPPER LEFT-HAND CORNER OF THE PS5 WITH YOUR LEFT HAND.



3. WITH YOUR RIGHT HAND, PULL AND THEN SLIDE THE BACKING PLATE TO THE LEFT TO REMOVE.



4. LOOSEN THE SCREW TO REMOVE THE EXPANSION SLOT COVER.



5. YOU SHOULD NOW SEE THE GREEN EXPANSION SLOT.



6. REMOVE THE SINGLE SCREW AND THE WASHER-LIKE STANDOFF UNDERNEATH.



7. PLACE THE STANDOFF IN THE HOLE THAT CORRESPONDS TO THE M.2 FORM FACTOR.



8. CLICK THE GOLD CONNECTOR OF THE SSD INTO THE MATCHING INPUT NOTCH.



9. FASTEN THE SSD WITH THE SCREW.



10. REINSTALL THE EXPANSION SLOT COVER.



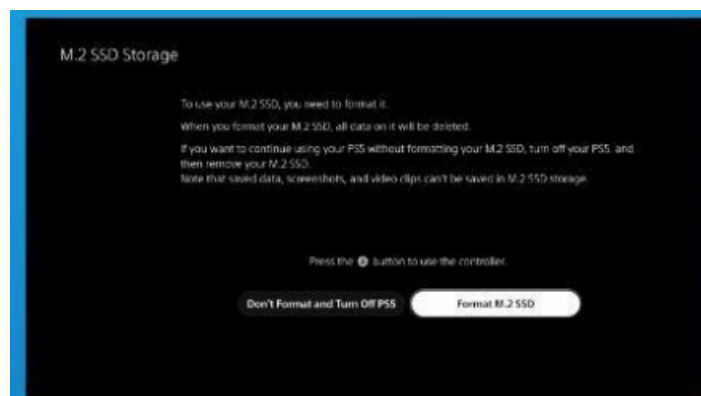
11. REINSTALL THE BACKING PLATE BY SLIDING IT BACK AND PUSHING DOWNWARDS.



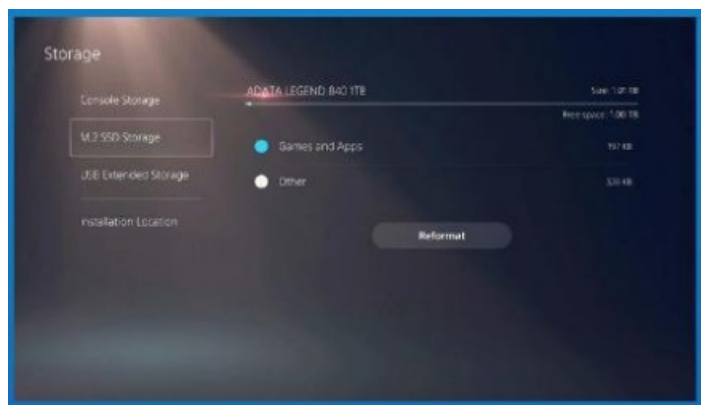
12. RE-ATTACH CABLES AND TURN ON YOUR PS5.



13. FOLLOW THE REFORMATTING INSTRUCTIONS.




14. YOU'RE DONE! YOU CAN NOW STORE GAMES AND APPS ONTO THE ADATA LEGEND 840.



CUSTOMER SERVICE AND TECHNICAL SUPPORT Contact Us: <https://www.adata.com/en/support/contact-us/>

## Documents / Resources

	<p><a href="#">ADATA M.2 SSD Solid State Drive</a> [pdf] Instruction Manual M.2 SSD Solid State Drive, M.2 SSD, Solid State Drive, State Drive, Drive</p>
---	---

## References

- [🇨🇳 | ADATA \(China\)](#)
- [🇩🇪 | Kontakt | ADATA \(Germany\)](#)
- [🌐 | Contact Us | ADATA \(Global\)](#)
- [🇪🇸 | Contactar con Nosotros | ADATA \(Spain\)](#)
- [🇫🇷 | Contact et enquête | ADATA \(France\)](#)
- [🇯🇵 | ADATA \(Japan\)](#)
- [🇰🇷 | ADATA \(Korea\)](#)
- [🇵🇹 | Contacte-nos | ADATA \(Portugal\)](#)
- [🇷🇺 | Контакты | ADATA \(CIS\)](#)
- [🇹🇷 | İletişim | ADATA \(Turkey\)](#)
- [🇹🇼 | ADATA \(Taiwan\)](#)
- [User Manual](#)

[Manuals+](#), [Privacy Policy](#)

This website is an independent publication and is neither affiliated with nor endorsed by any of the trademark owners. The "Bluetooth®" word mark and logos are registered trademarks owned by Bluetooth SIG, Inc. The "Wi-Fi®" word mark and logos are registered trademarks owned by the Wi-Fi Alliance. Any use of these marks on this website does not imply any affiliation with or endorsement.