

[Skip to content](#)

Manuals+

User Manuals Simplified.



Adapters Z01 Bluetooth 5.1 Adapter User Manual

[Home](#) » [Adapters](#) » Adapters Z01 Bluetooth 5.1
Adapter User Manual

Adapter

Bluetooth 5.1 ADAPTER User Manual

Contents [hide](#)

[1 Reminder beforeuse](#)

[2 System requirements](#)

[3 File transfer function \(only for Android phones\)](#)

[4 Connect to Bluetooth mouse](#)

[5 Connect to Bluetooth keyboard](#)

[6 Parameter](#)

[7 Q&A Part](#)

[8 FCC Information](#)

[9 Documents / Resources](#)

[10 Related Posts](#)

Reminder beforeuse

- a: The PC is connected to the Internet, and the Automatic Windows Update setting is turned on
- b: Windows system check for updates to the latest status.
- c: If you have any installation problems, please contact customer service for support first.

Easy setup

- Step 1 Plug the USB Bluetooth adapter into the PC/Laptop port
- Step 2 Scan for available networks and install automatically, follow the steps to complete the setup

Packinglist

- USB Bluetooth Adapterx1 Manualx1

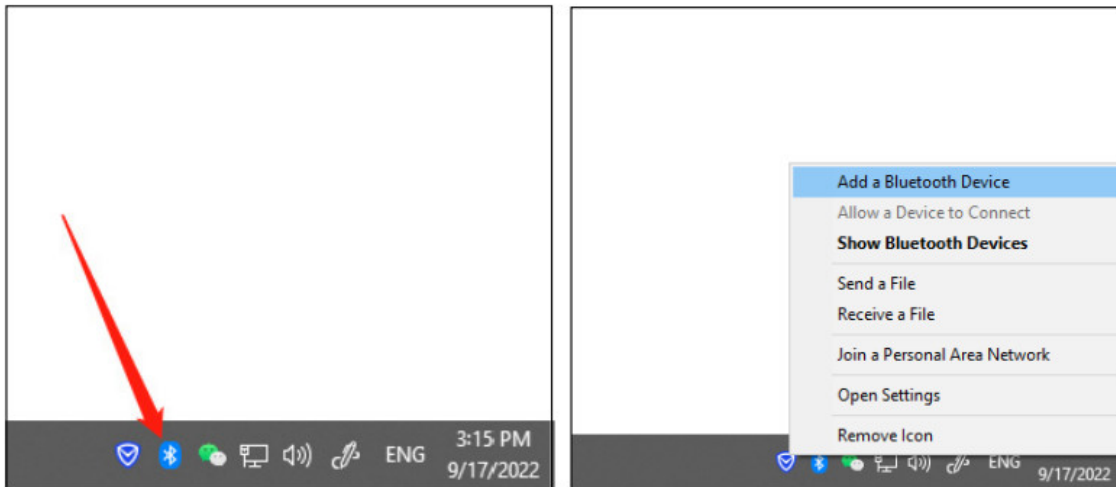
System requirements

- Supported Systems: Windows10/11(32/64bit

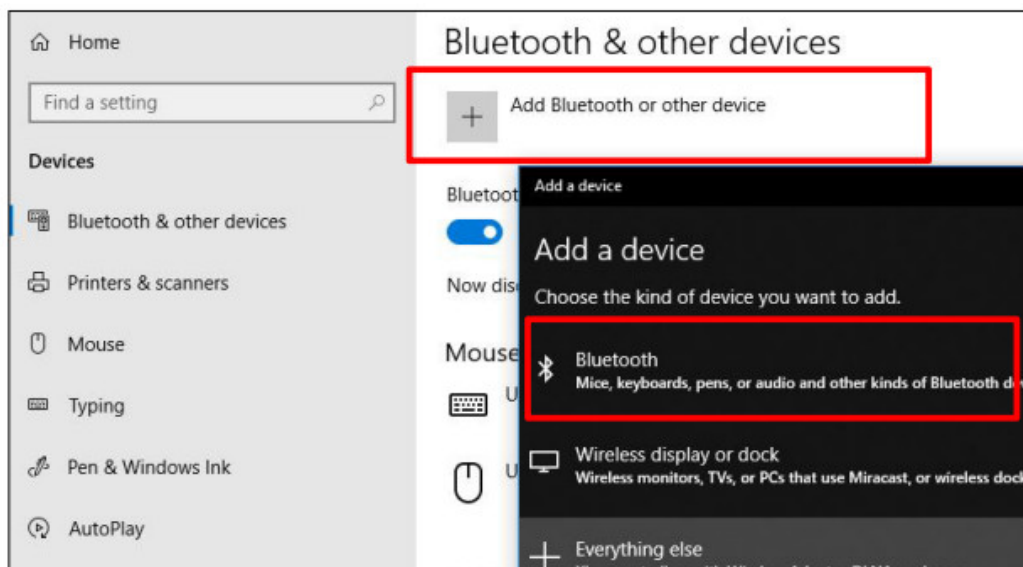
- CPU Speed: 500MHz or higher
- Hard Disk Space: 500MB
- Memory: 1 GB or more

Pair your device

1. Once plugged into the PC/Laptop port, the Bluetooth icon should appear in the system tray. Right-click the icon and select "Add Bluetooth Device".

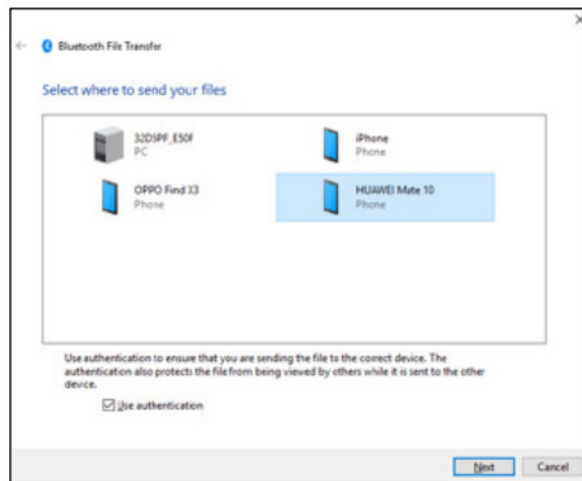
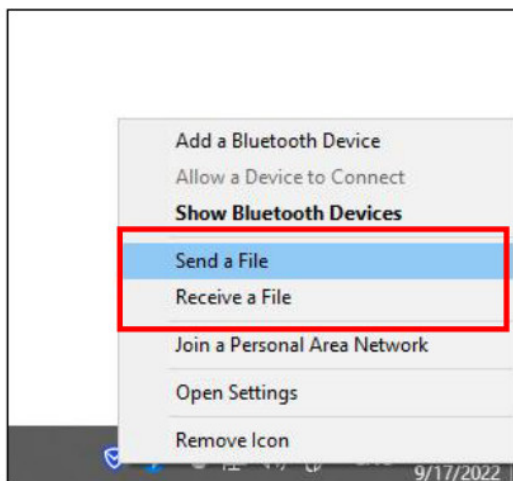


2. Click the "Add Bluetooth or other devices" button at the top of the settings windows, select "Bluetooth", put your Bluetooth devices to be placed in pairing mode, find the Bluetooth device name and click to connect.

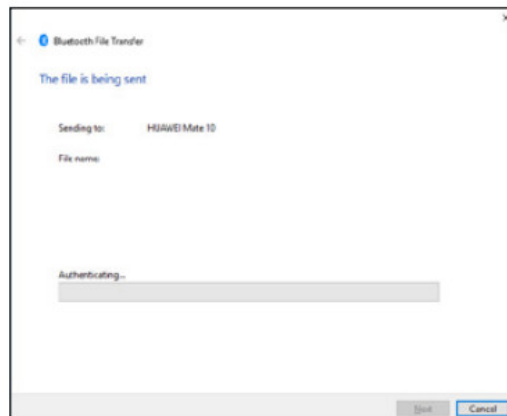
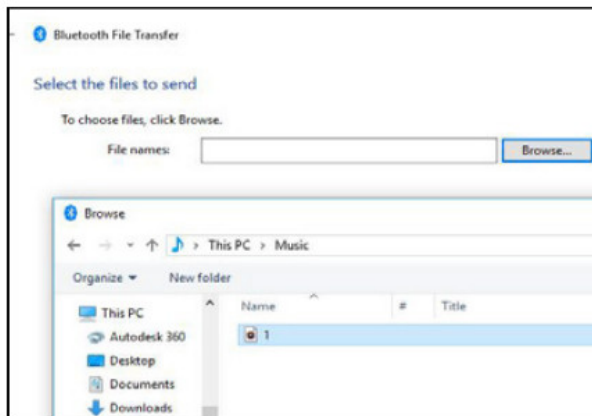


File transfer function (only for Android phones)

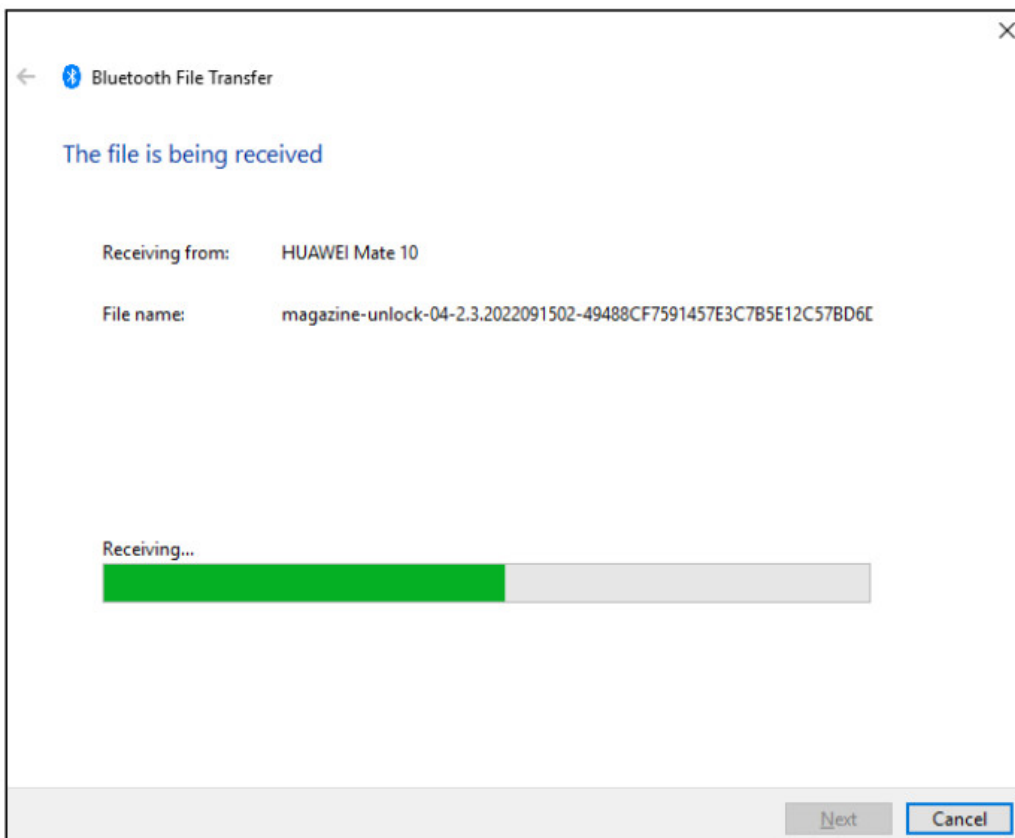
1. After plugging into the PC/Laptop port, the Bluetooth icon appears in the system tray, after connecting the phone, right-click the icon and select "Send File".



2. Select the smartphone that needs to send the file, click “Next”, browse the files to be sent in the folder, and start sending after.

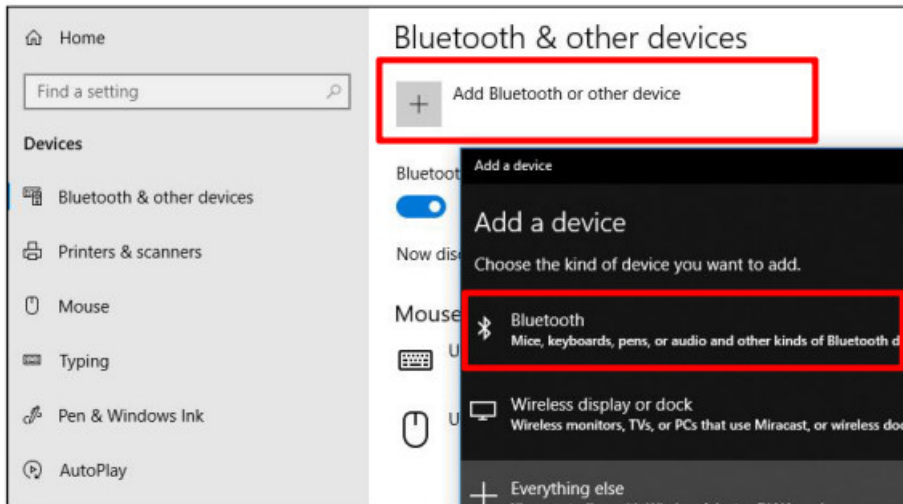


3. Select “Receive File” on the phone, the phone displays “Receiving” and waits for the file to be received successfully, and finally click “Finish”.

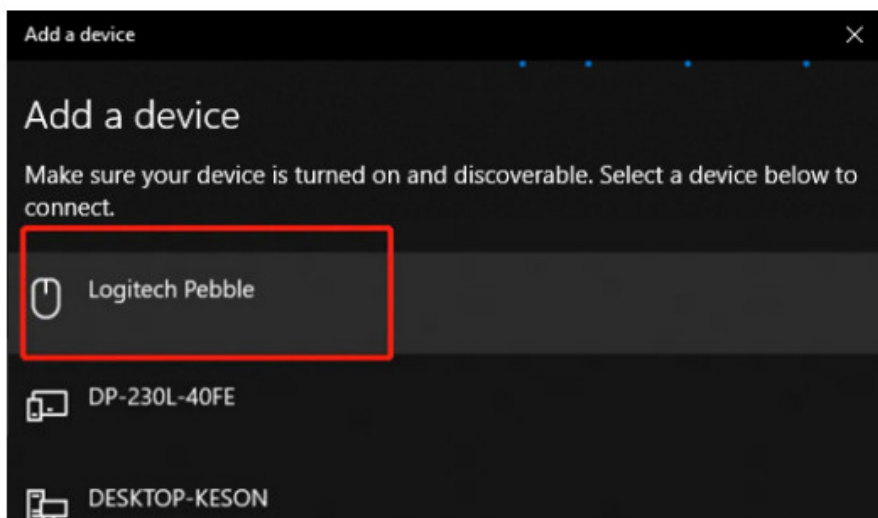


Connect to Bluetooth mouse

1. Click the “Add Bluetooth or other devices” and select “Bluetooth”.

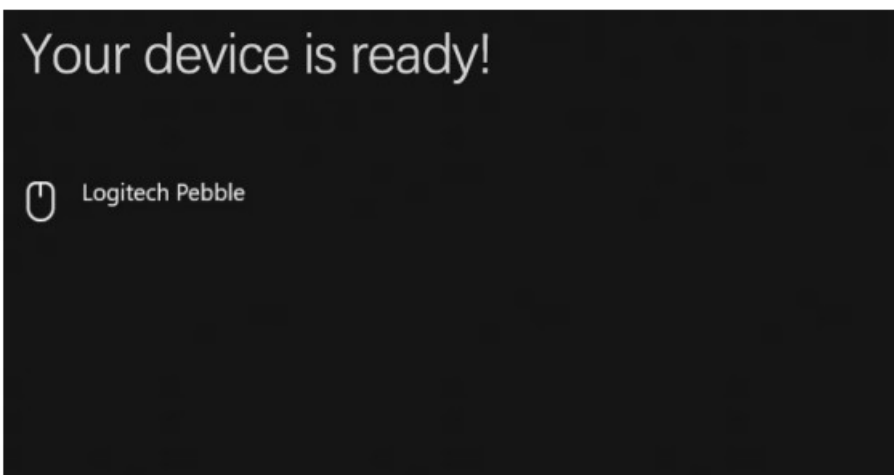


2. Long press the mouse pairing button to enter the fast flashing state, find the mouse name in the list and click



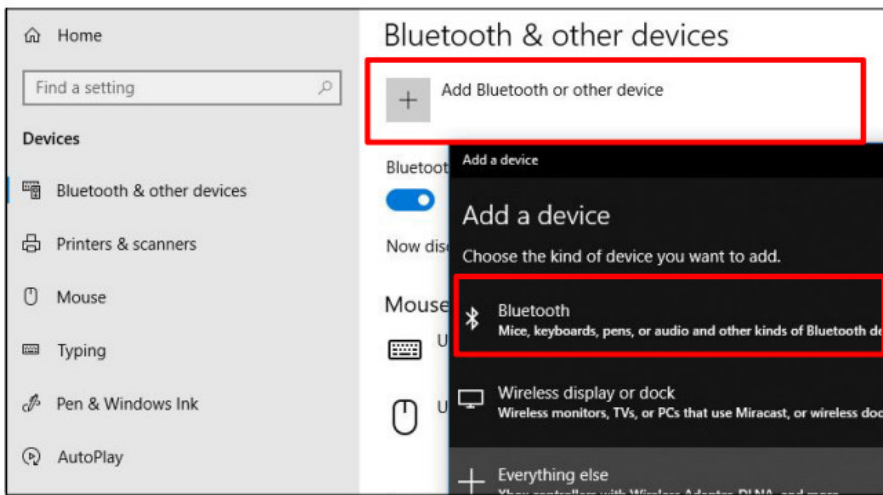
to connect.

3. The mouse enters a slow flashing state and the connection.

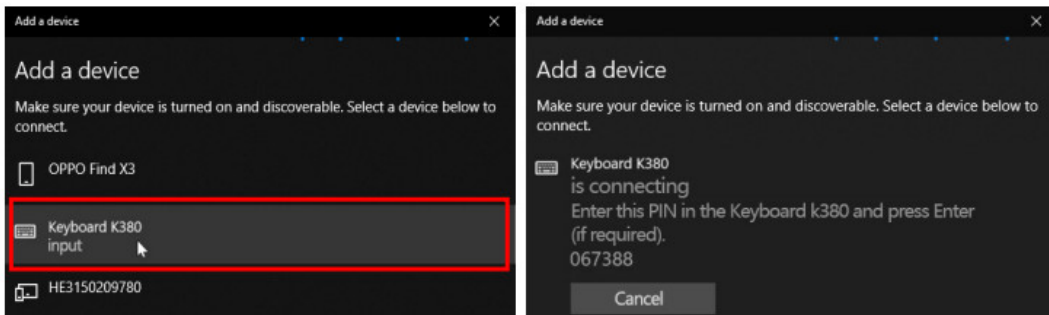


Connect to Bluetooth keyboard

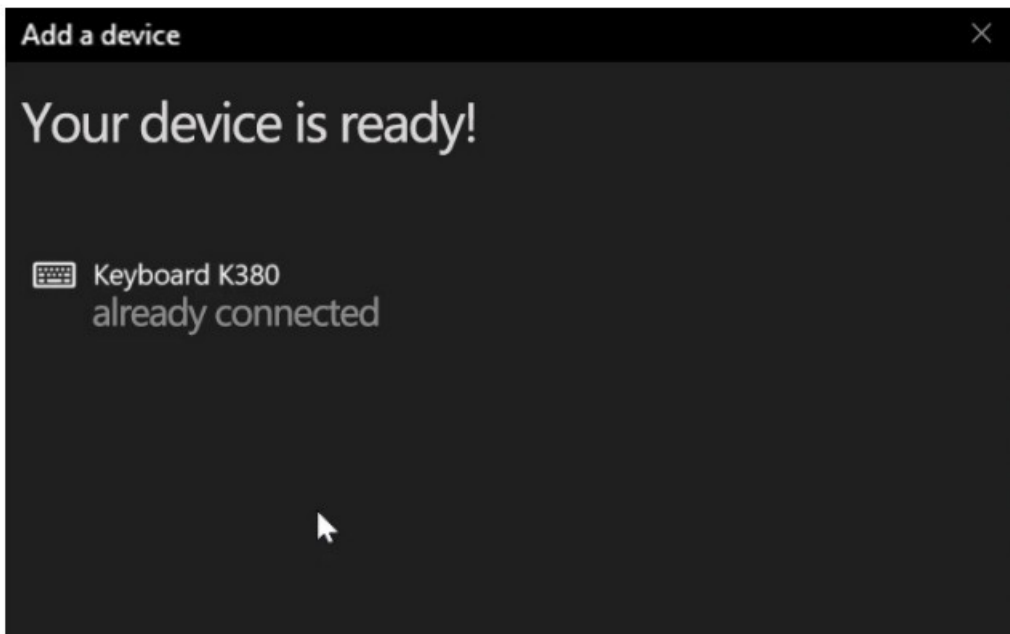
1. Click the “Add Bluetooth or other devices” and select “ Bluetooth”.



2. Long press the keyboard pairing button, find the keyboard name in the list, click "connect", enter the PIN code prompted by the computer, and then click the Enter key.



3. Connection succeeded



Parameter

Class I Power Standard	Distance of 0-150 meters
TX Transmission Rate	3Mbps
Transmission Frequency	2.4GHz
LED Indication	Power on Linking Standby
Bluetooth Version	BT 5.1
Support System	Win 10/11(Free drive)
Protocol	HFP1.6/HSP1.2/AVRCP 1.4/A2DP1.2/FTP1.2
Model Number	Z01

Q&A Part

Q1: Bluetooth 5.1 driver installation error reported

– The driver may conflict with other Bluetooth drivers, it is recommended to disable or uninstall other Bluetooth drivers in your computer's device manager before installation.

Q2: It can't search or pair to any Bluetooth devices.

- Click the Bluetooth icon, select more Bluetooth devices on the right, check "Allow Bluetooth devices to find this computer".
- Clear the original pairing record, and restart the computer again and search devices..

Q3: The adapter stops working after a while

– Open the device manager and found Bluetooth, right click " Update driver ", click " Search Automatically for Updated Windows Driver".

Q4: Which devices are compatible ?

– Support Windows 10/11, Not applicable for Mac OS, Linux, TV, Car.

FCC Information

This equipment has been tested and found to comply with the limits for a Class B digital device, pursuant to part 15 of the FCC Rules.

These limits are designed to provide reasonable protection against harmful interference in a residential installation. This equipment generates, uses and can radiate radio frequency energy and, if not installed and used in accordance with the instructions, may cause harmful interference to radio communications. However, there is no guarantee that interference will not occur in a particular installation. If this equipment does cause harmful interference to radio or television reception, which can be determined by turning the equipment off and on, the user is encouraged to try to correct the interference by one or more of the following measures:

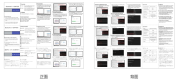
- Reorient or relocate the receiving antenna.
- Increase the separation between the equipment and receiver.
- Connect the equipment into an outlet on a circuit different from that to which the receiver is connected.
- Consult the dealer or an experienced radio/TV technician for help.

This device complies with part 15 of the FCC Rules. Operation is subject to the following two conditions:

- (1) This device may not cause harmful interference, and
 - (2) this device must accept any interference received, including interference that may cause undesired operation.
- changes or modifications not expressly approved by the party responsible for compliance could void the user's authority to operate the equipment.

RF warning for Portable device: The device has been evaluated to meet general RF exposure requirement. The device can be used in portable exposure condition without restriction.

Documents / Resources



[Adapters Z01 Bluetooth 5.1 Adapter](#) [pdf] User Manual

Z01, 2A8YN-Z01, 2A8YNZ01, Z01 Bluetooth 5.1 Adapter, Bluetooth 5.1 Adapter, Adapter

[Manuals+](#),

- [home](#)
- [privacy](#)