



# adaptdefy LapStacker Flex Retractable Carry System for Wheelchair Installation Guide

[Home](#) » [adaptdefy](#) » adaptdefy LapStacker Flex Retractable Carry System for Wheelchair Installation Guide 

## LapStacker<sup>®</sup> FLEX

Made with love by

≥ adaptdefy<sup>®</sup>

Lap Stacker Flex Retractable Carry System for Wheelchair  
Installation Guide

### Contents

- [1 Lap Stacker Flex Retractable Carry System for Wheelchair](#)
- [2 Warnings – Please read carefully](#)
- [3 COMPONENTS](#)
- [4 INSTALL TOP BUCKLE HOLDER \(OPTIONAL\)](#)
- [5 HORIZONTAL INSTALLATION](#)
- [6 VERTICAL INSTALLATION](#)
- [7 Further Information](#)
- [8 Documents / Resources](#)
  - [8.1 References](#)

**Lap Stacker Flex Retractable Carry System for Wheelchair**



### Installation Guide

Congratulations and thank you for choosing to install a LapStacker on your wheelchair. Please read this installation guide carefully to ensure your Lap Stacker is installed and used correctly and safely.

### Warnings – Please read carefully

#### Warnings – General

- LapStacker is not a seatbelt, safety device, or medical device.
- LapStacker is designed as an aid only.
- Do not use your LapStacker to secure people or animals.
- Carefully place and monitor items as they can still move, even with your LapStacker securing them.
- Do not exceed any specific wheelchair manufacturer's guidelines for loading or usage of attachments.
- In no event shall our company be liable for any direct, indirect, punitive, incidental, special, consequential damages to property or life, whatsoever arising out of or connected with the use or misuse of our products.

#### Warnings – Injury

- Do not use your LapStacker to secure items with the potential to cause an injury. These may include sharp, hot or heavy items.
- Over tightening the LapStacker straps when securing items may cause a loss of circulation, a pressure injury or damage to any item/s being carried.
- Avoid contact with your newly installed LapStacker while transferring in and out of the wheelchair. Failure to do so may result in injury or damage.
- Do not use your LapStacker for extensive periods of time. This may result in loss of circulation or pressure

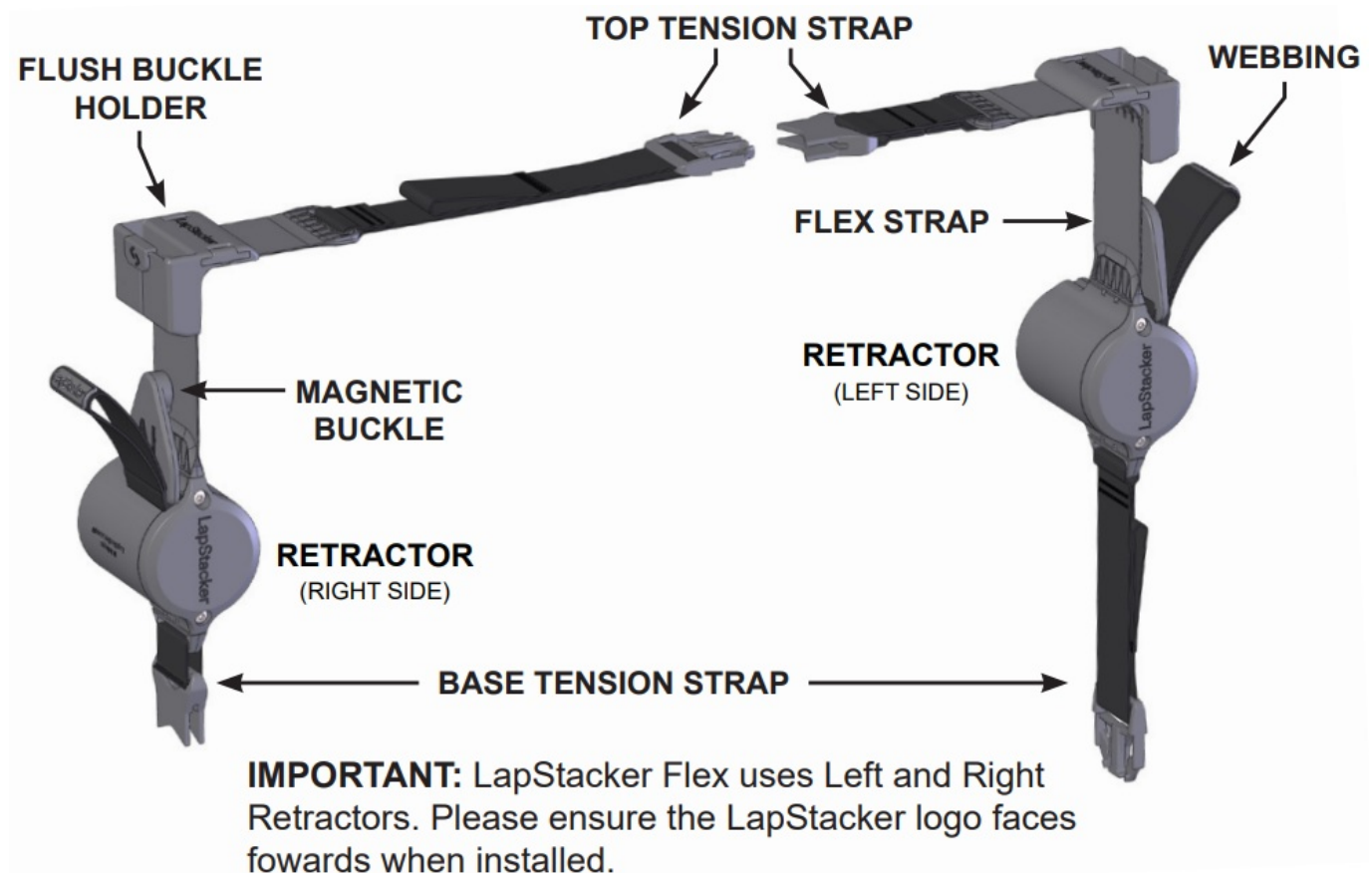
injury.

- Do not stack items too high as this may reduce visibility and lead to a collision that causes injury.

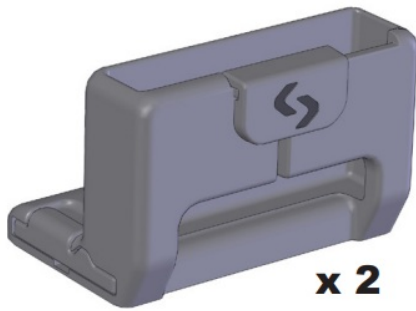
## Warnings – Installation

- If you are installing your LapStacker and moving existing components around, such as arm rests or leg restraints, please ensure they are reinstalled and secured correctly. Failure to do so may result in their failure and may cause injury.
- The LapStacker Retractor has not been designed for submersion in water. Doing so will likely result in rusting of the internal components and may void the Warranty.
- Wipe components clean with a damp cloth and avoid the use of chemical detergents, which may damage the plastic surfaces.
- The straps may be cleaned using water and a damp cloth. We suggest removing the retractors, fully extending the straps and letting them dry before retracting the straps back into their housing again.

## COMPONENTS

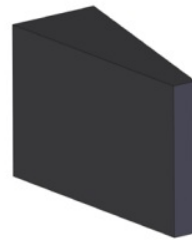


**TOP BUCKLE HOLDER**



**x 2**

**FOAM WEDGE**



**x 2**

**ALCOHOL WIPE**



**x 1**

**VELCRO PAIRS (SHORT)**



**x 2**

**VELCRO PAIRS (LONG)**



**x 2**

## 1. FIND OPTIMAL LOCATION

- LapStacker is best installed inline with the centre of where you will carry items, but will still work if forward or back of this.
- Locate this central point on your wheelchairs top tube.



## 2. SELECT INSTALL ORIENTATION

## RIGID CHAIRS

Single tube frames

HORIZONTAL INSTALL



Dual, non parallel tube frames

HORIZONTAL INSTALL



### STEP 2. SELECT INSTALL ORIENTATION

## FOLDING CHAIRS

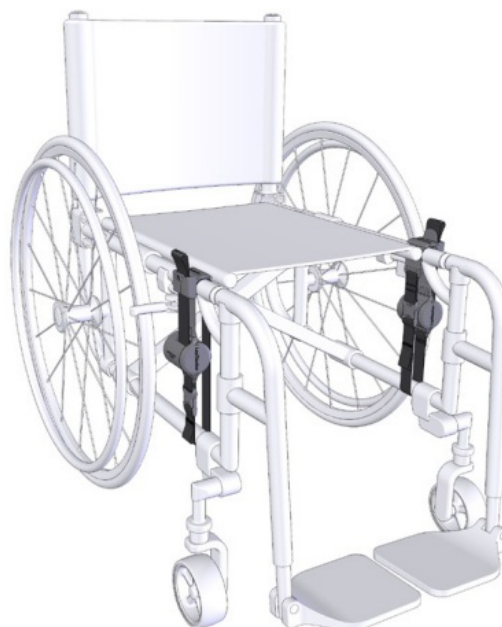
Single tube frames

HORIZONTAL INSTALL



Parallel dual tube frames

VERTICAL INSTALL



### STEP 3. CHECK CLEARANCE – HORIZONTAL

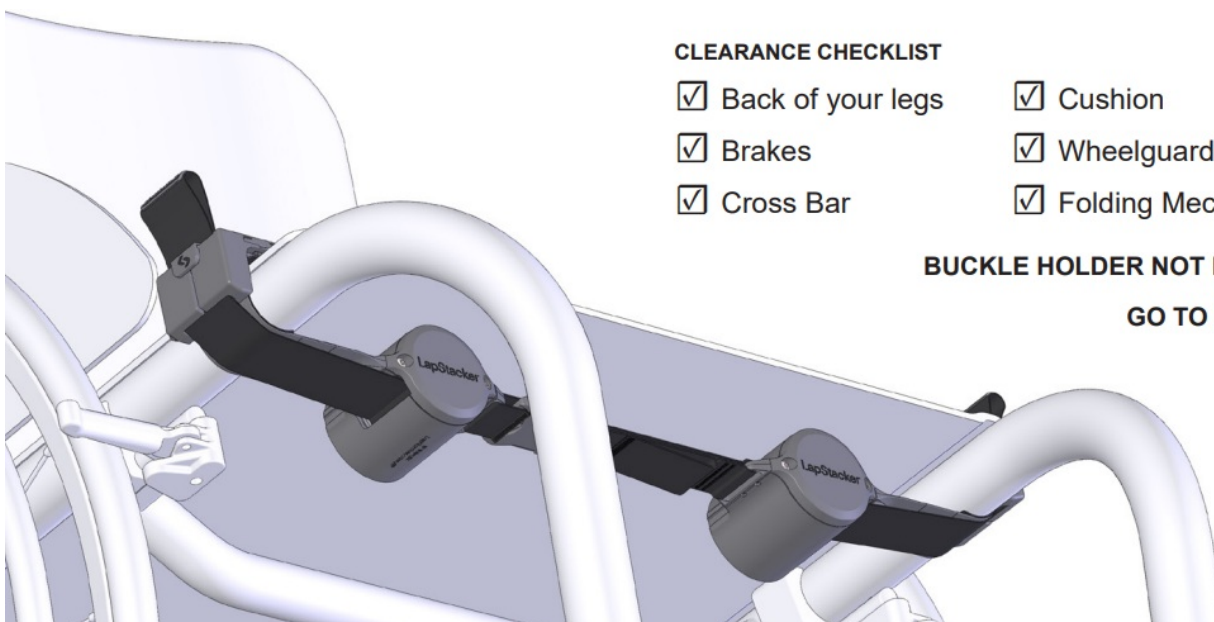
#### HOW IT WORKS

The horizontal install works by fastening LapStacker across the chair frame. If you have a raising seat base, the top tension strap must pass under this.

#### TEST FIT:

Check that your wheelchair components will not clash with LapStacker. It is possible to adjust some wheelchair components if clearance is an issue.





#### CLEARANCE CHECKLIST

- |   |  |
|---|--|
| <input checked="" type="checkbox"/> Back of your legs | <input checked="" type="checkbox"/> Cushion            |
| <input checked="" type="checkbox"/> Brakes            | <input checked="" type="checkbox"/> Wheelguards        |
| <input checked="" type="checkbox"/> Cross Bar         | <input checked="" type="checkbox"/> Folding Mechanisms |

**BUCKLE HOLDER NOT FITTING?**

**GO TO PAGE 11.**

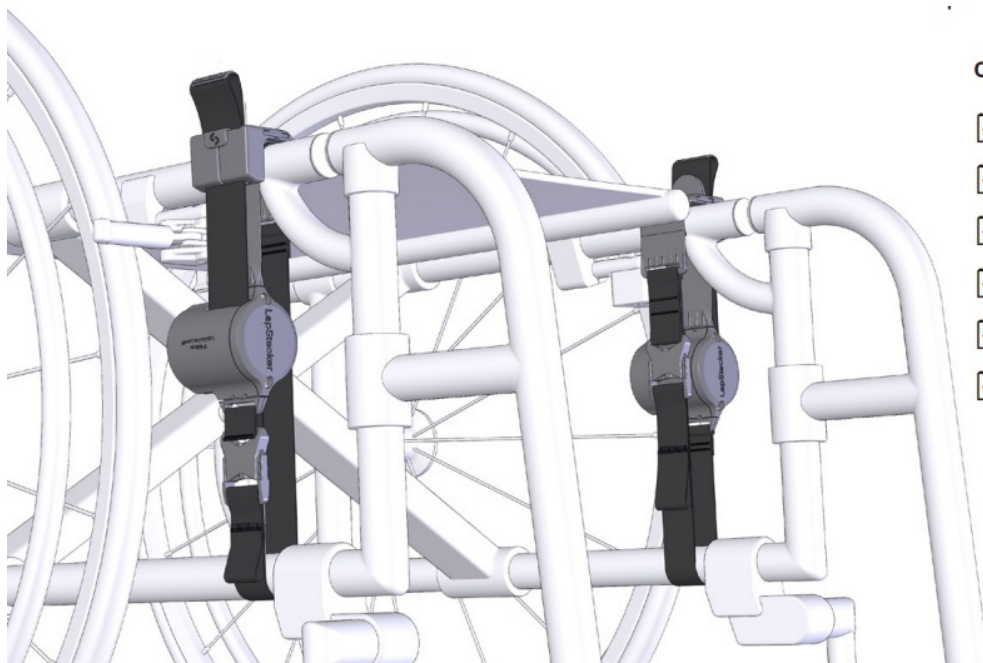
### STEP 3. CHECK CLEARANCE – VERTICAL

#### HOW IT WORKS

The vertical install works by fastening each half of LapStacker around the top and lower frame tubes.

#### TEST FIT:

Check that your wheelchair components will not clash with LapStacker. It is possible to adjust some wheelchair components if clearance is an issue.



#### CLEARANCE CHECKLIST

- |  |
|--|
| <input checked="" type="checkbox"/> Back of your legs  |
| <input checked="" type="checkbox"/> Brakes             |
| <input checked="" type="checkbox"/> Seat Frame         |
| <input checked="" type="checkbox"/> Folding Mechanisms |
| <input checked="" type="checkbox"/> Cushion            |
| <input checked="" type="checkbox"/> Wheelguards        |

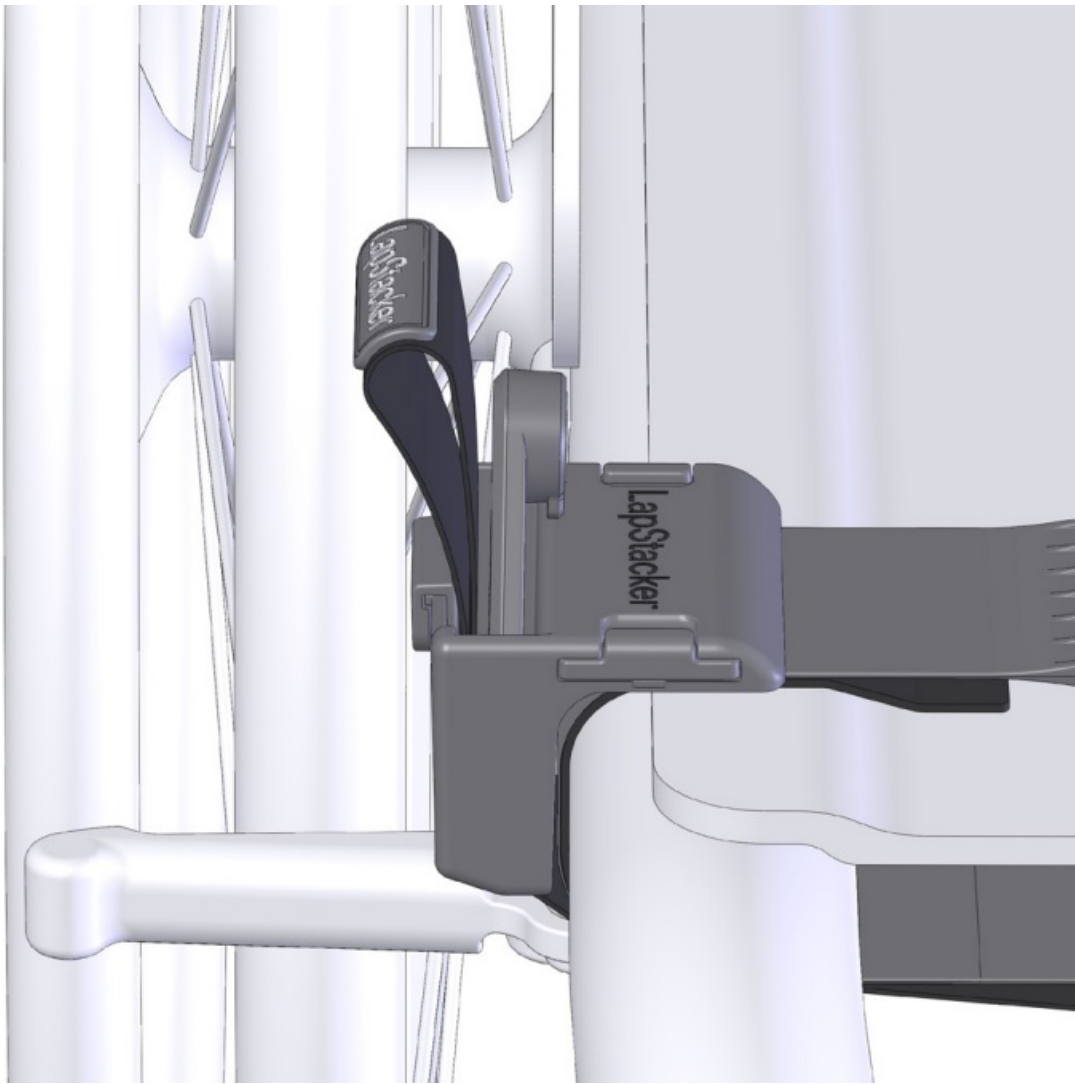
**BUCKLE HOLDER  
NOT FITTING?**

**GO TO PAGE 11.**

### STEP 4. SELECT BUCKLE HOLDER – FLUSH

#### FLUSH BUCKLE HOLDER

The Flush Buckle Holder comes installed as standard with your LapStacker and will suit 80% of installs. If clearance is an issue, you may consider using the Top Buckle Holder.

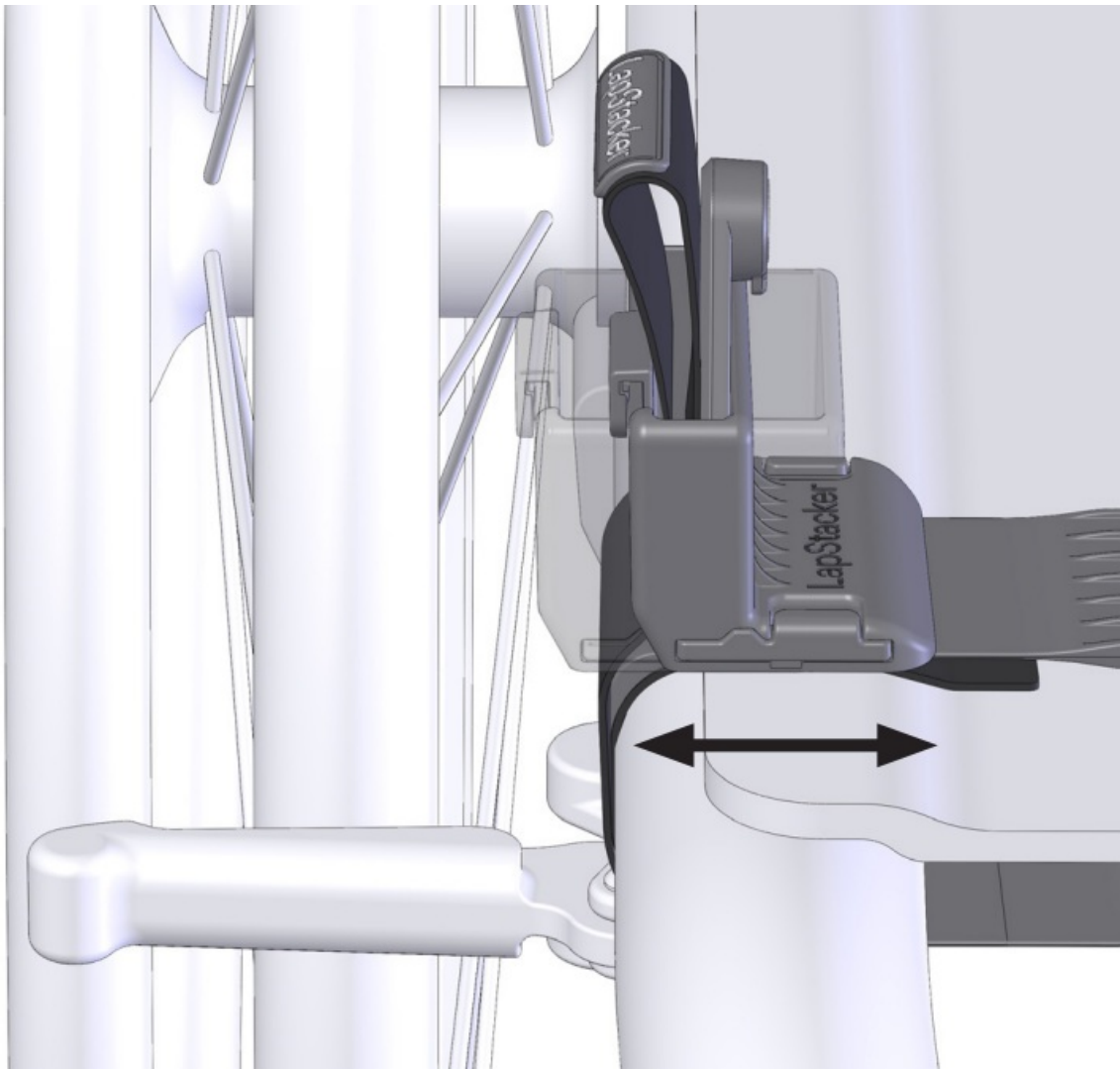


#### **STEP 4. SELECT BUCKLE HOLDER – TOP**

##### **TOP BUCKLE HOLDER**

The Top Buckle Holder sits above the frame top tube and has three adjustment positions to shift the keeper left to right.

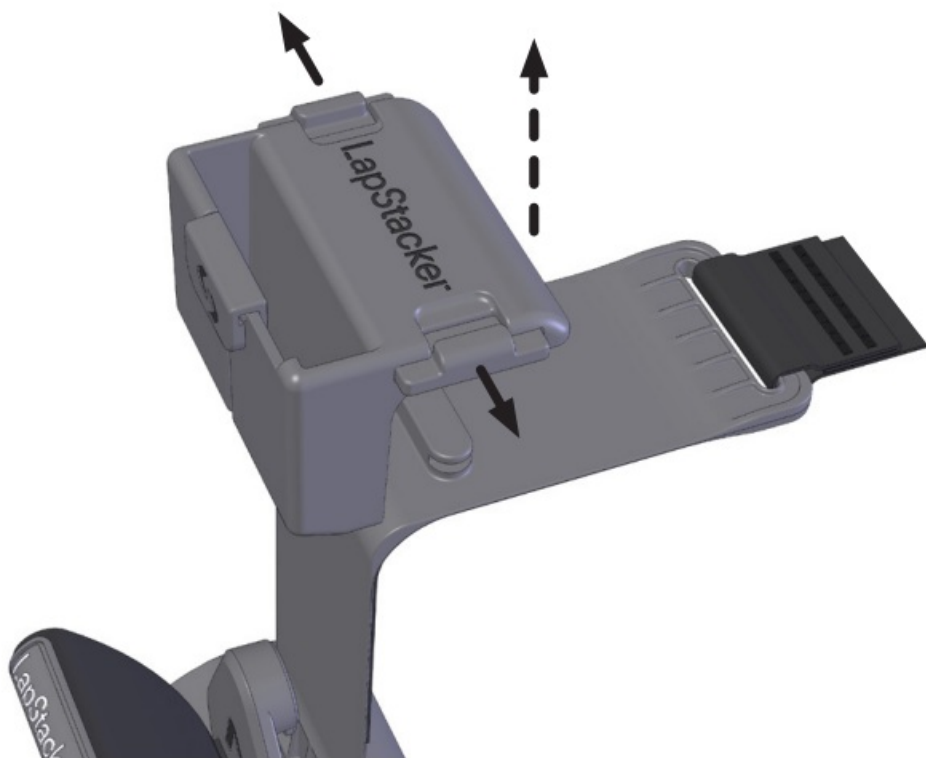
The adjustment can be used to create clearance from your wheel guards, brakes, seat frame or cushion etc.



## INSTALL TOP BUCKLE HOLDER (OPTIONAL)

### 1. REMOVE FLUSH BUCKLE HOLDER

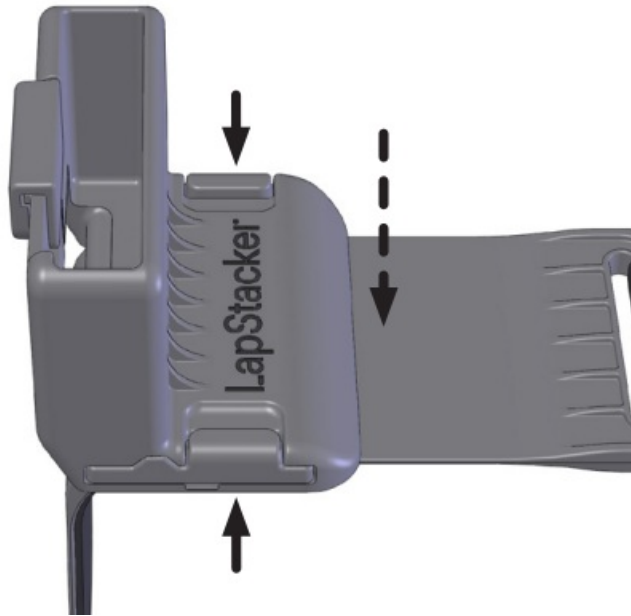
Unlock the Flush Buckle Holder by pulling both locking tabs out.



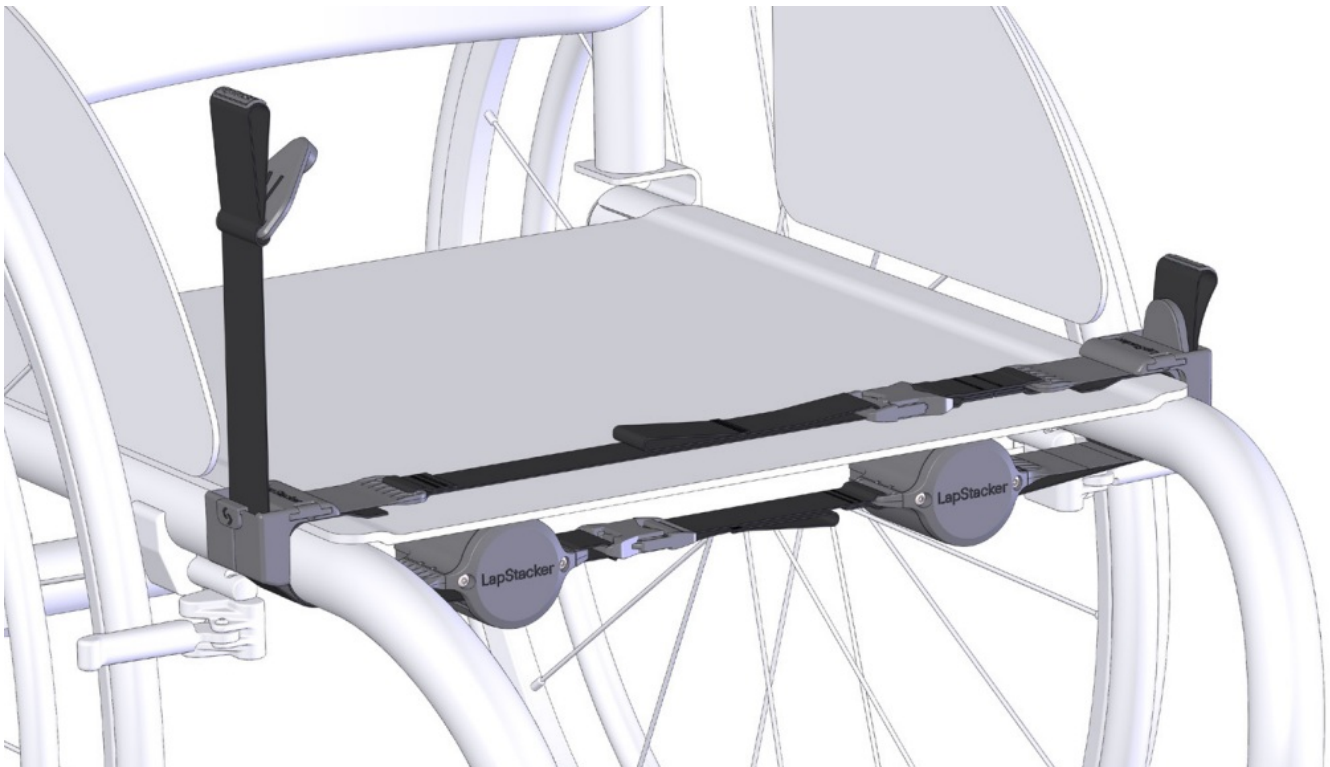


## 2. INSTALL TOP BUCKLE HOLDER

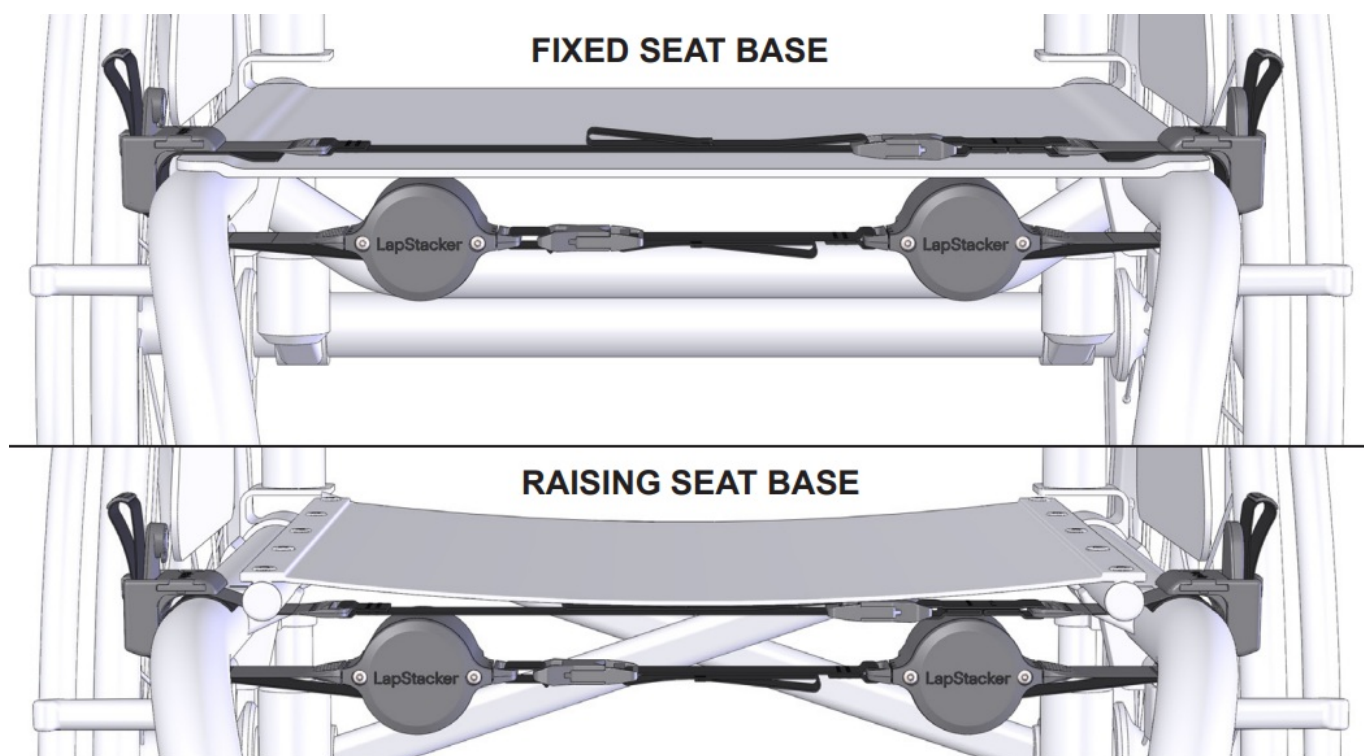
With both locking tabs open, place the Top Buckle Holder onto the Flex Strap in the desired position. Lock in place by pressing in both locking tabs.



## HORIZONTAL INSTALLATION

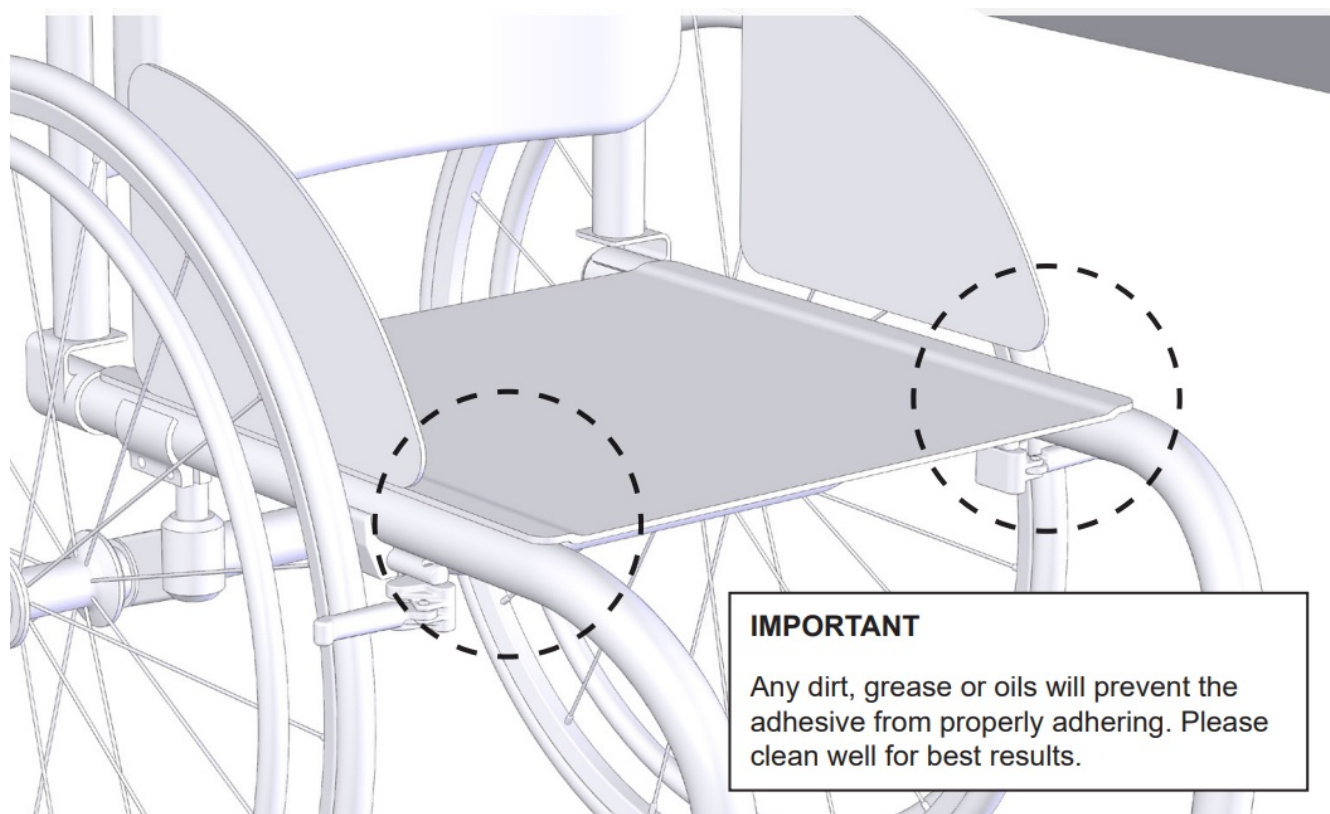


The wheelchairs depicted are for illustration purposes only. These instructions will work for whatever chair type you own.

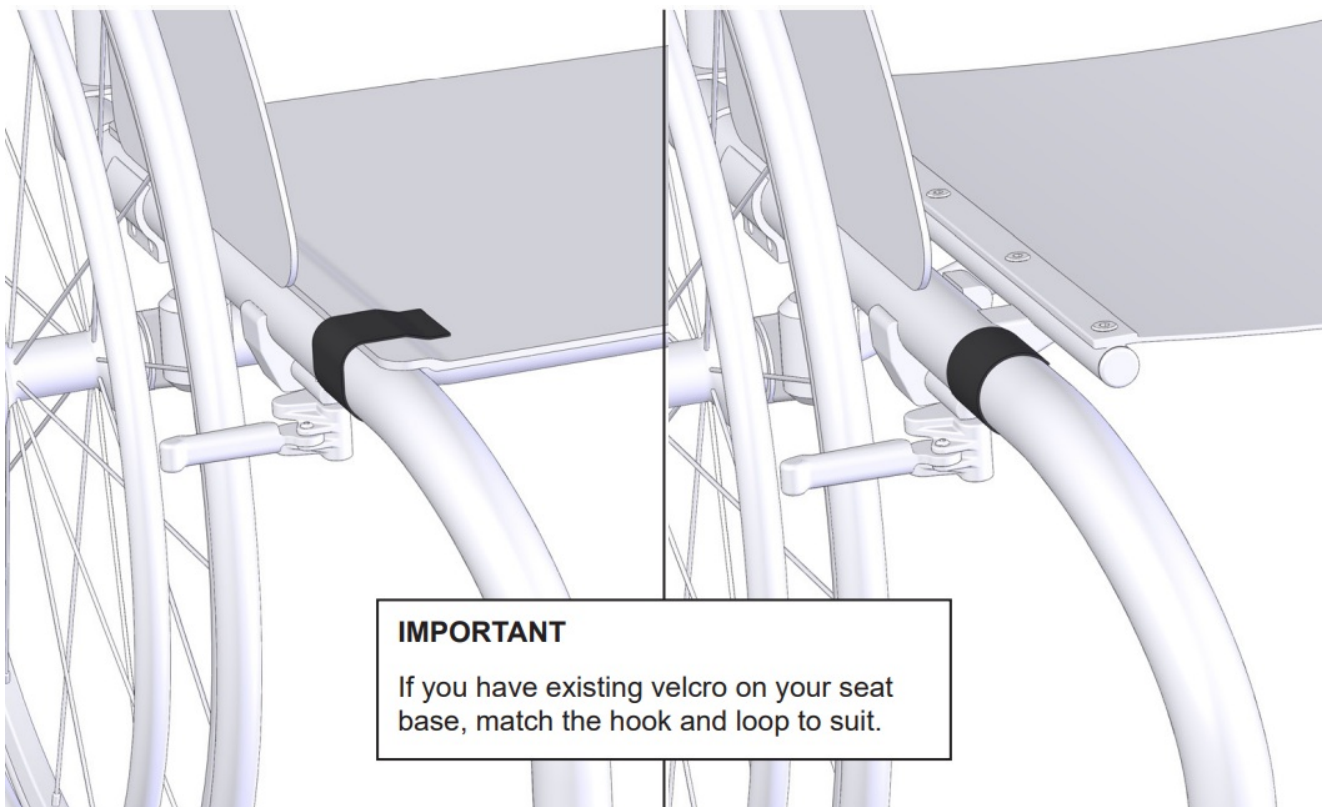


If you have a raising seat base, the LapStacker must pass under the seat base. Adapt install steps to suit.

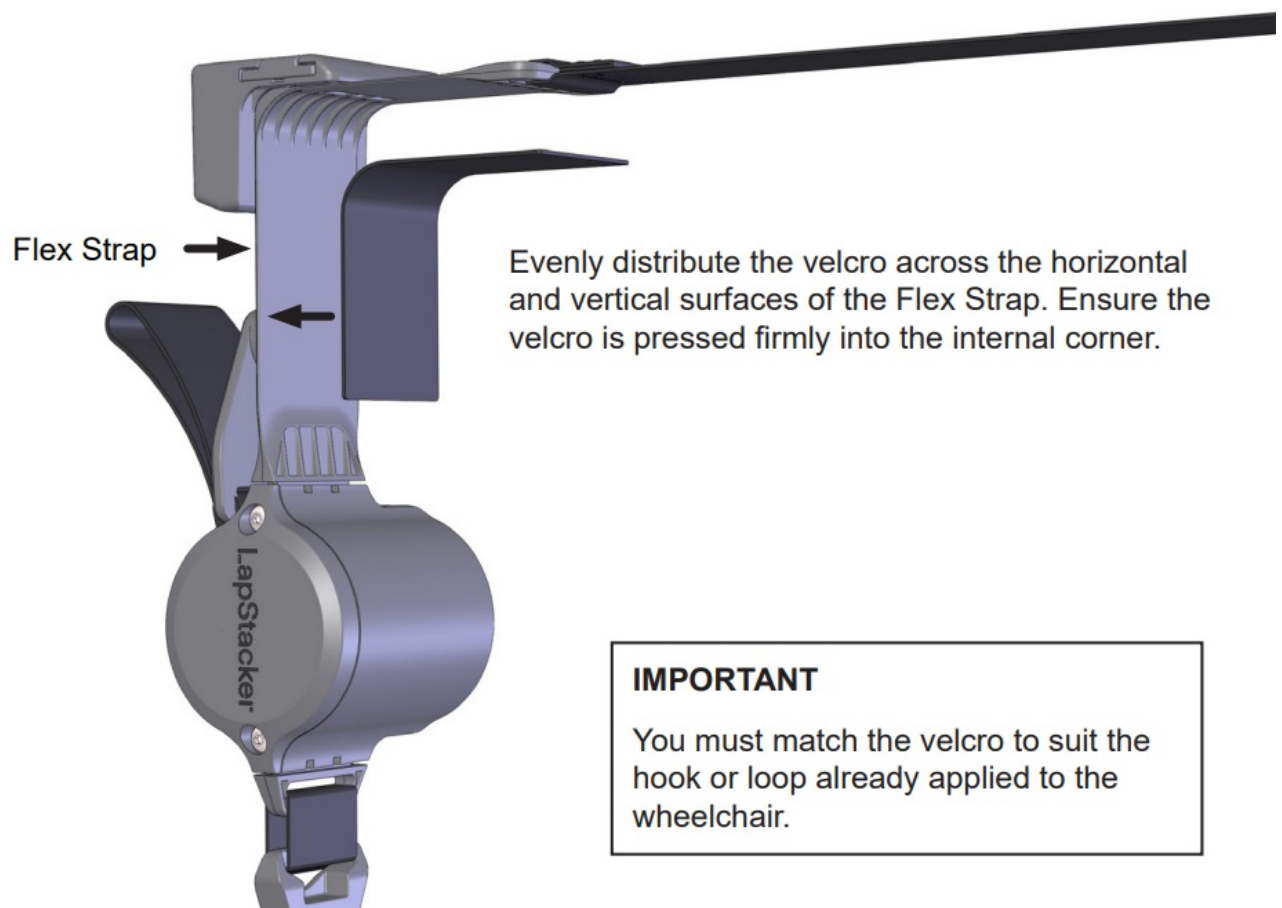
1. Clean the frame and seat base where LapStacker will be located using the alcohol wipes provided.



2. Adhere velcro to the frame and seat base where the Flex Straps will make contact. Repeat on each side.

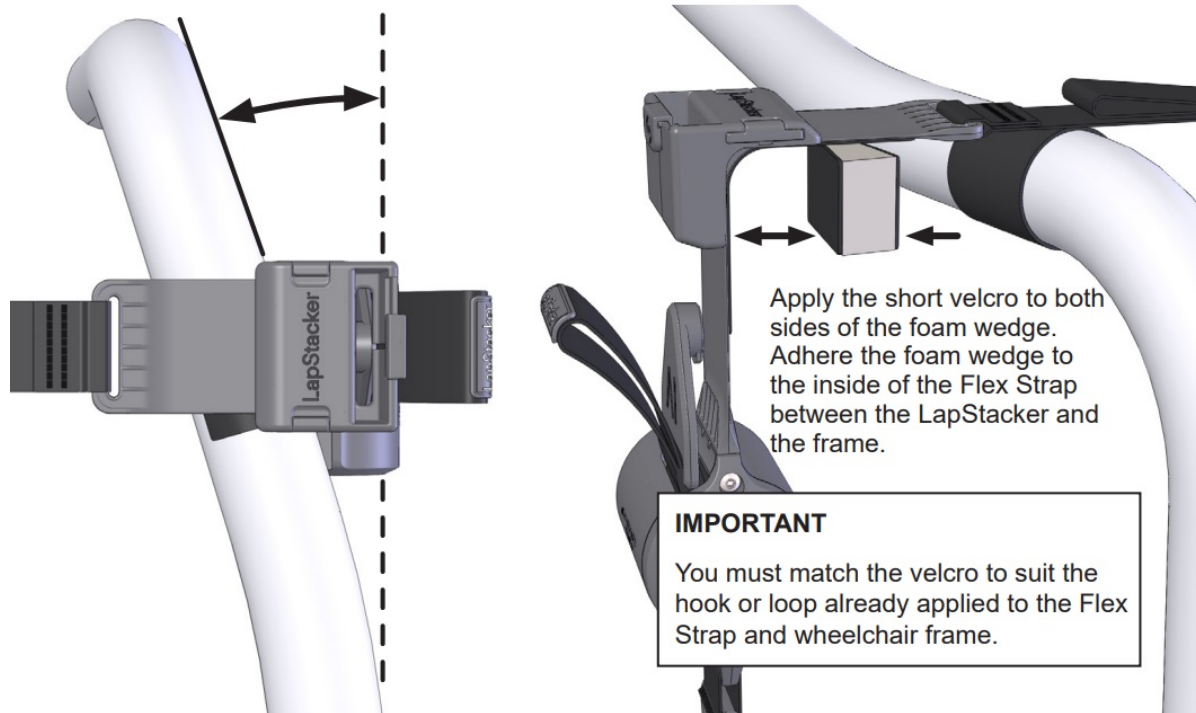


3. Adhere velcro to both LapStacker Flex Straps.

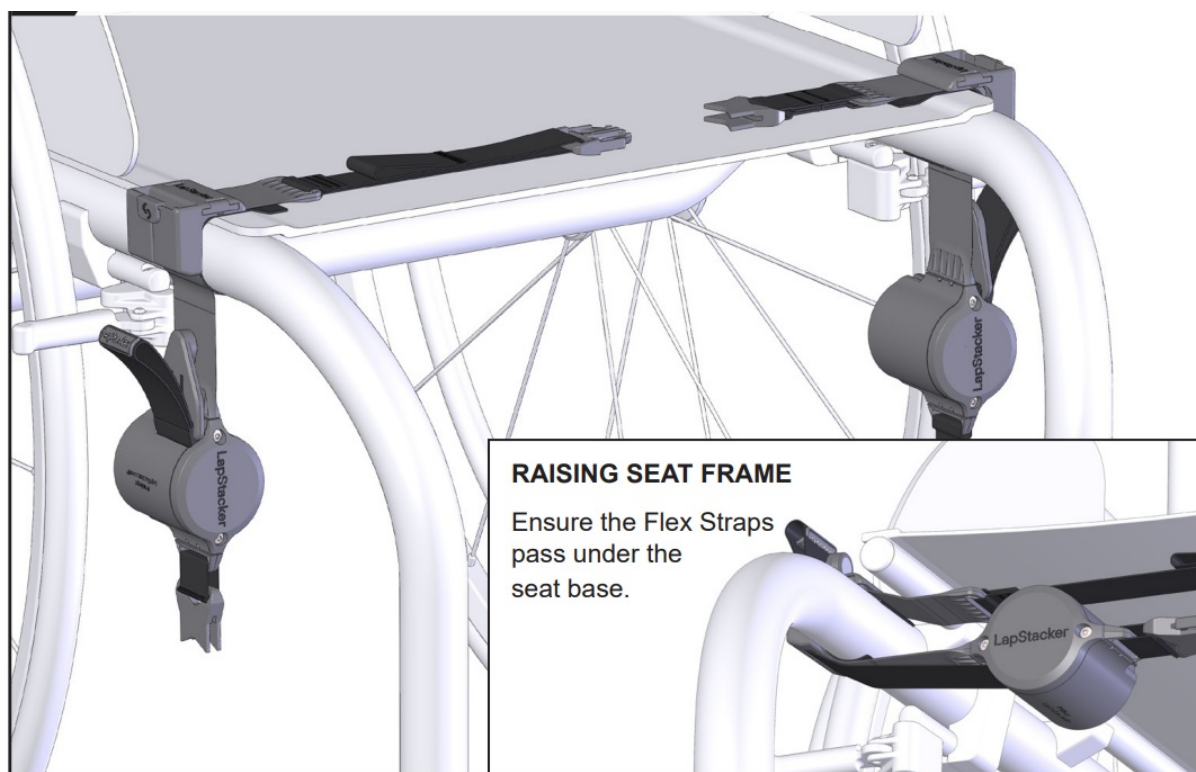


3a. If the frame is not parallel at the optimal position, use the foam wedges to correct the angle of the Buckle Holders.

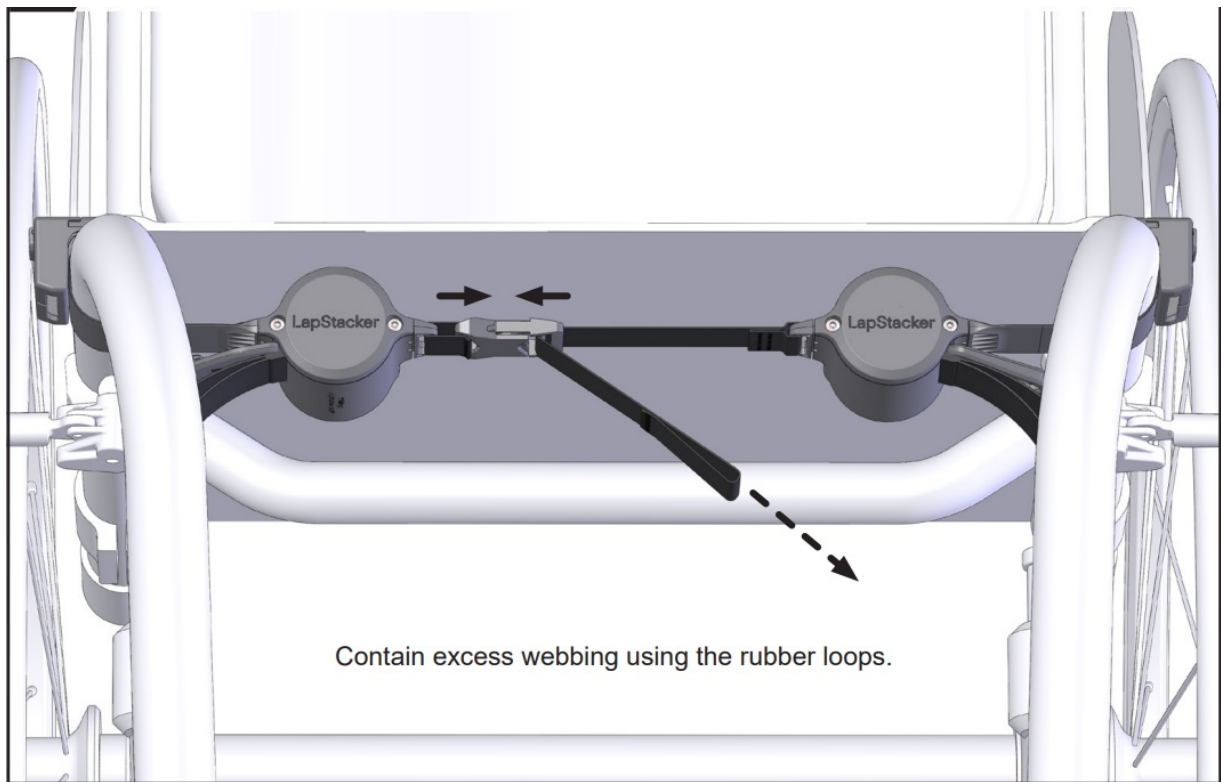




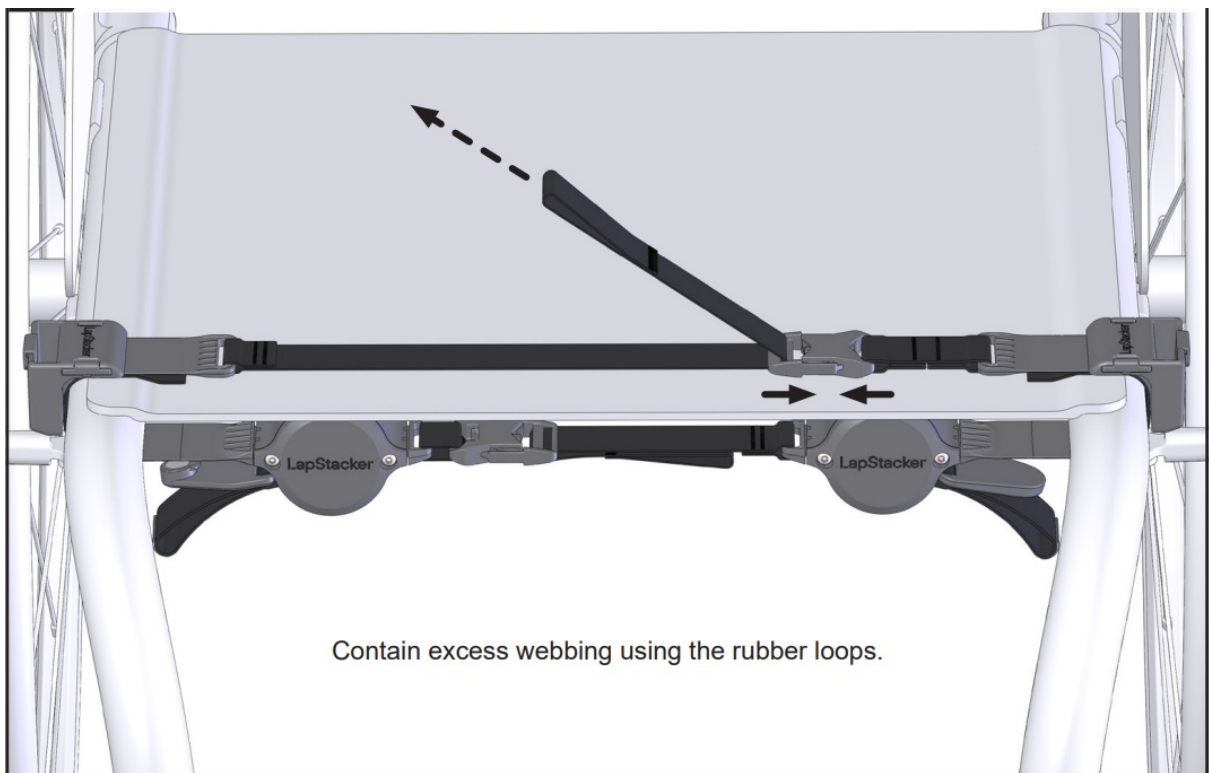
4. Attach LapStacker assembly to the frame.



5. Clip the Base Tension Strap together and tighten gently.

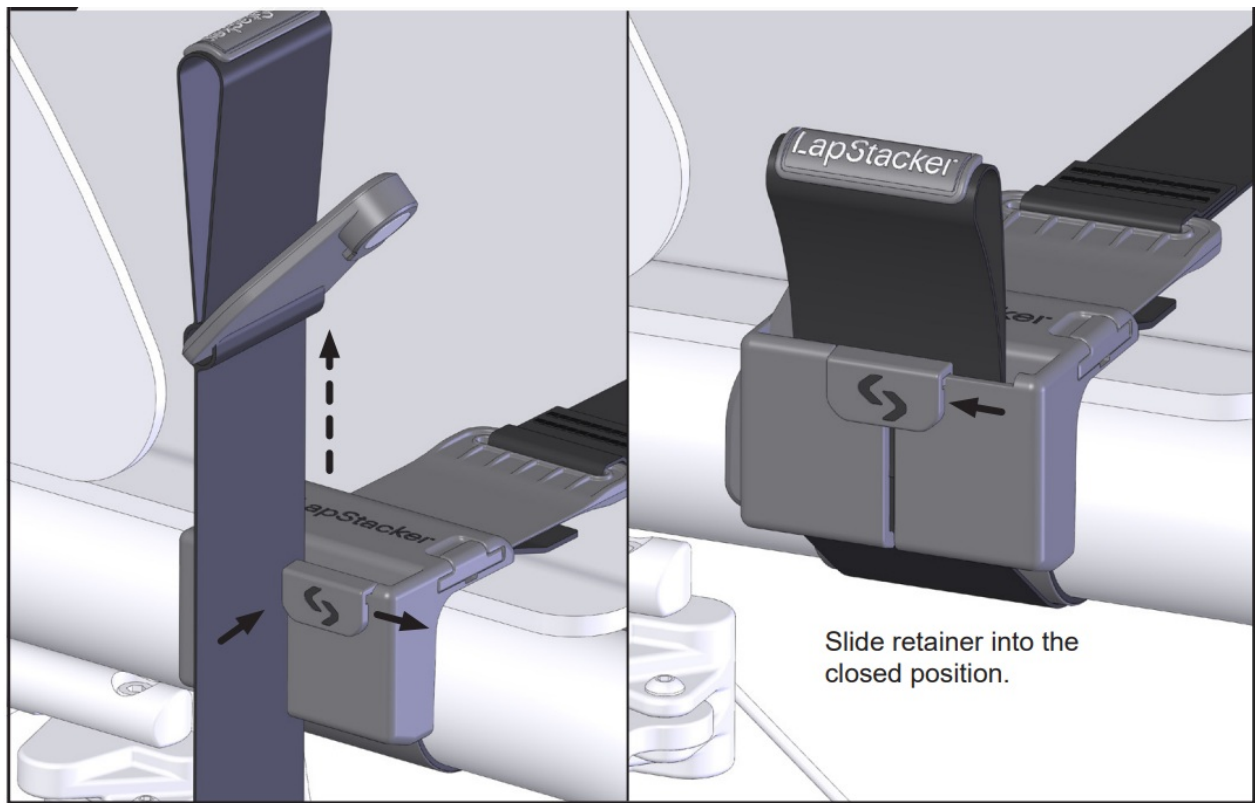


6. Clip the Top Tension Strap together and tighten gently.

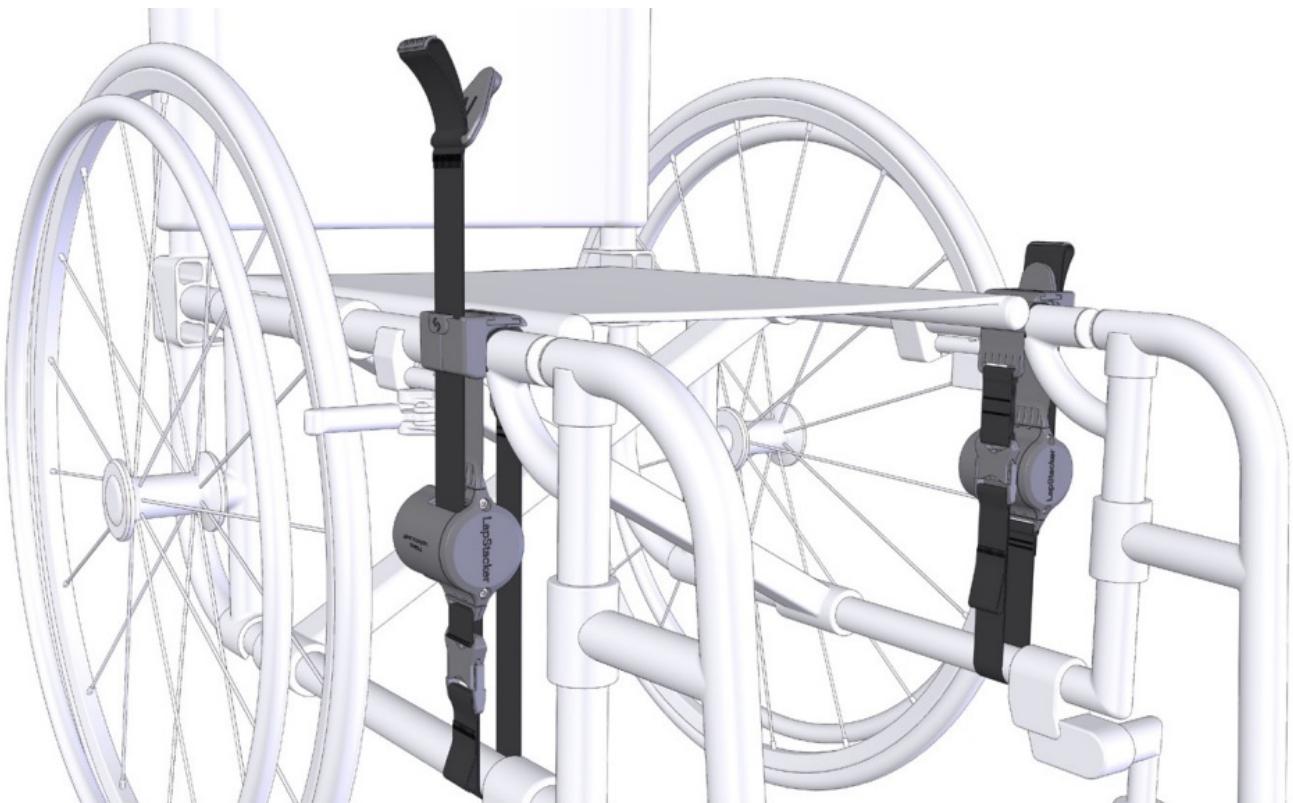


7. Pass the webbing through the Buckle Holder. Repeat for each side.



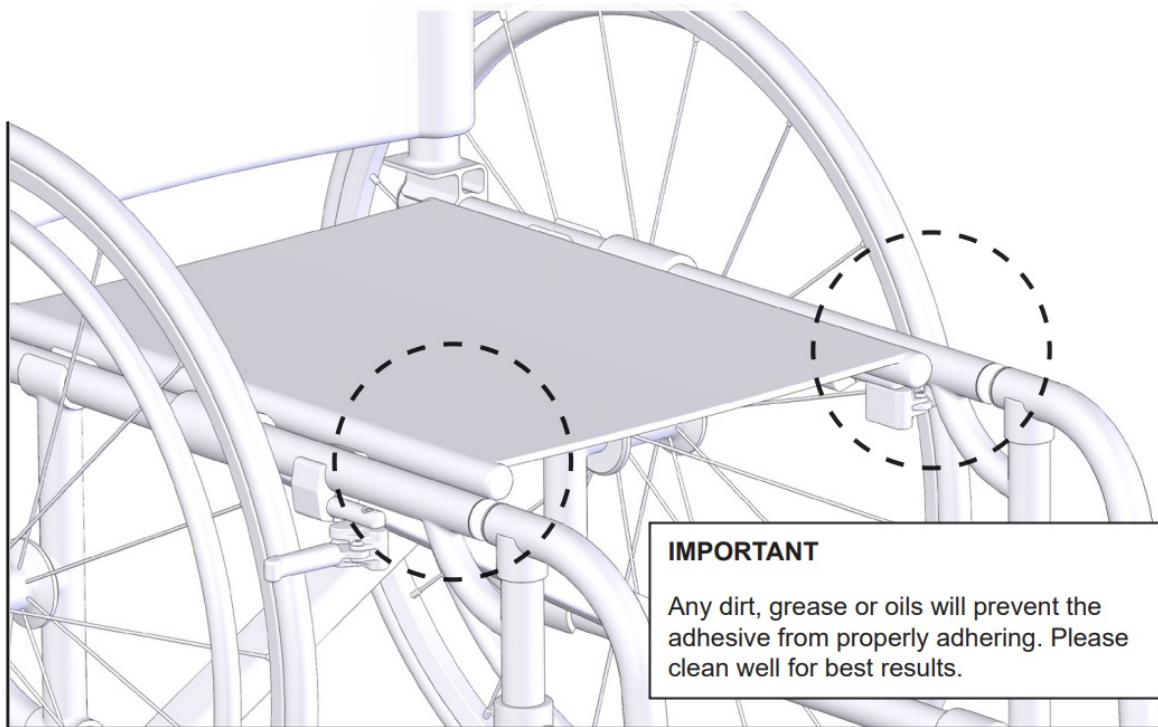


## VERTICAL INSTALLATION

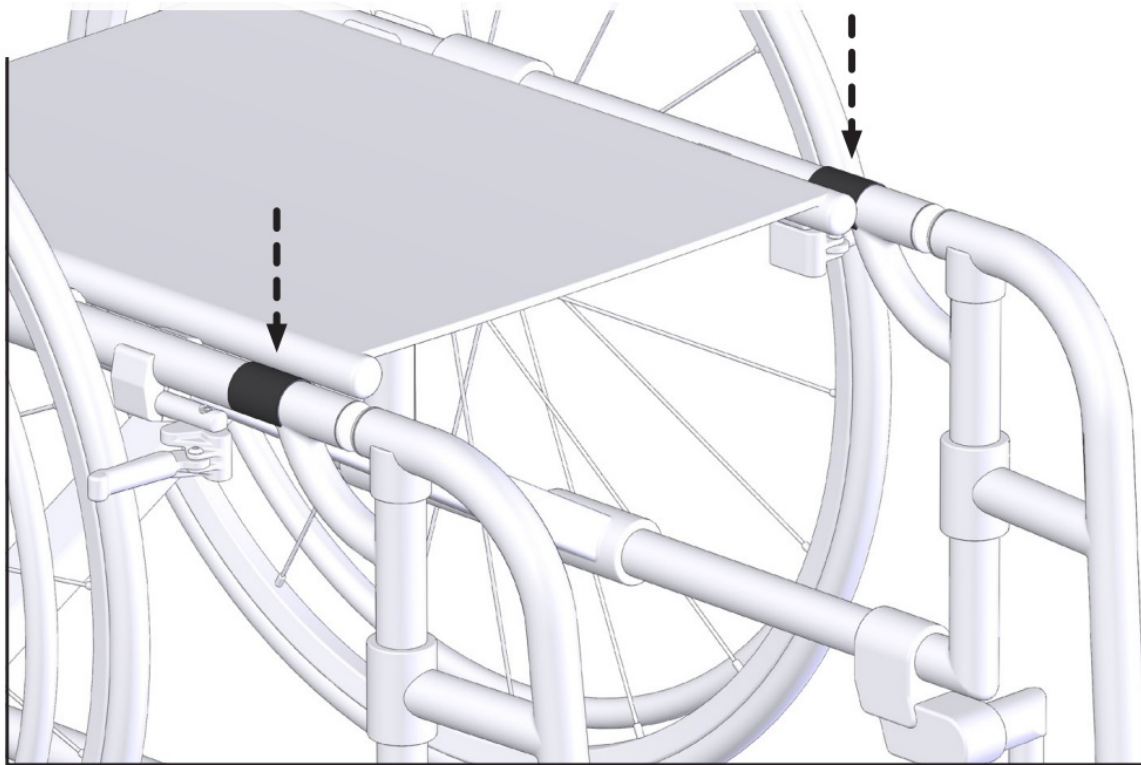


The wheelchair depicted is for illustration purposes only. These instructions will work for whatever chair type you own.

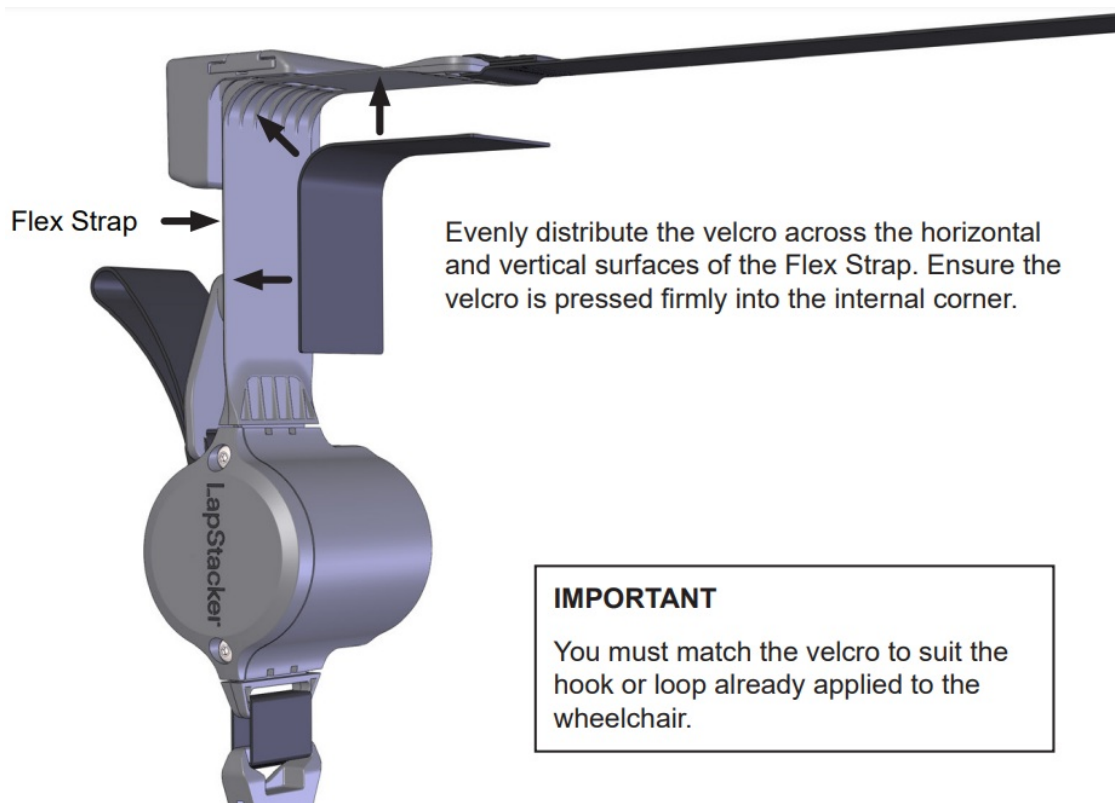
1. Using the alcohol wipes clean the frame where LapStacker will be located.



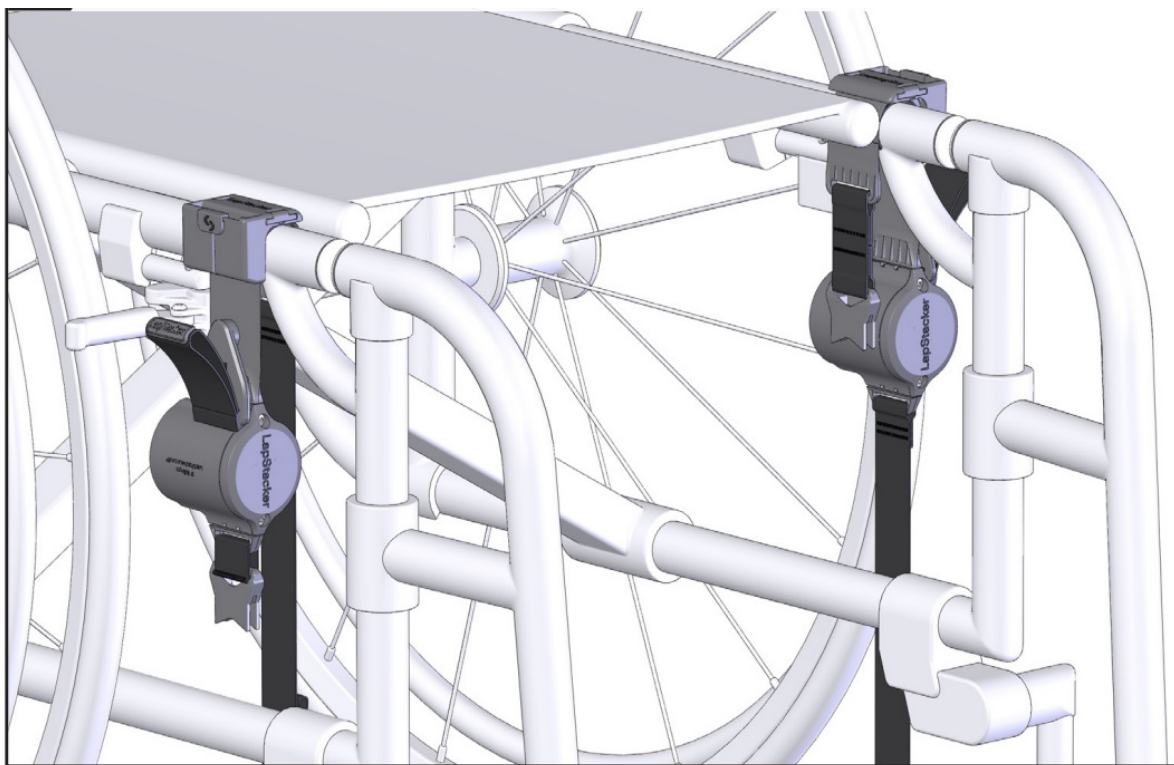
2. Adhere velcro to the frame on both sides where the Flex Straps will make contact.



3. Adhere velcro to both LapStacker Flex Straps.

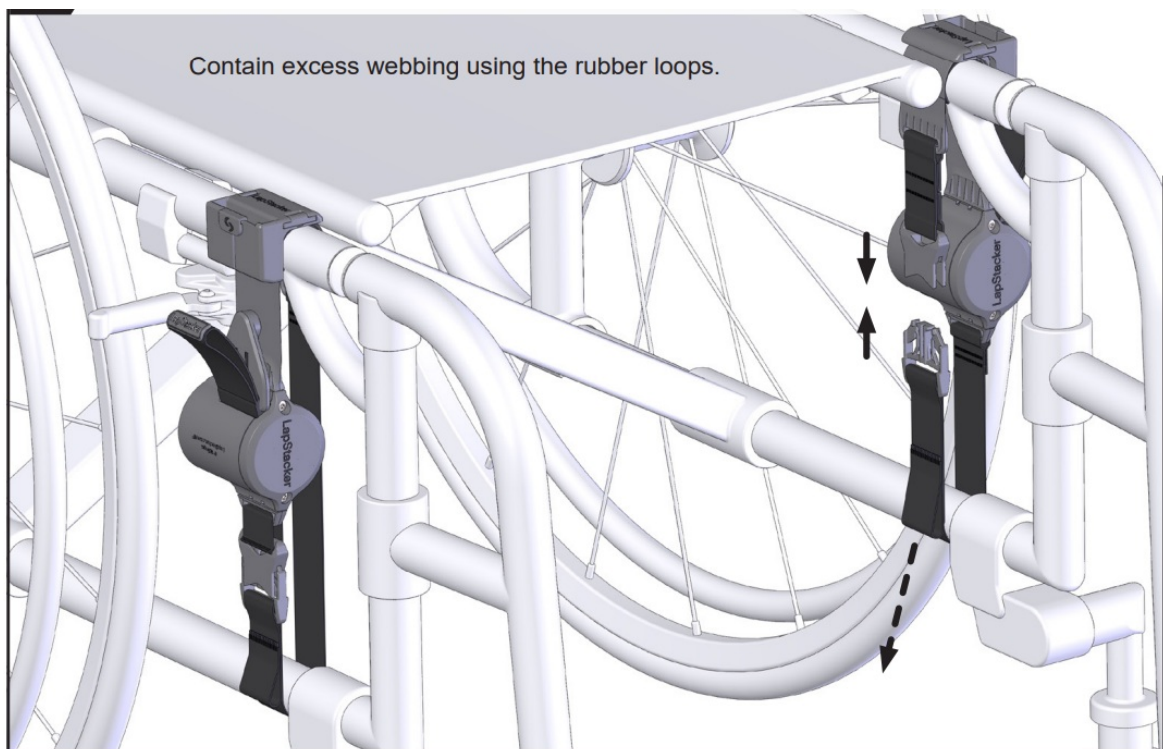


4. Attach LapStacker assembly to the frame.

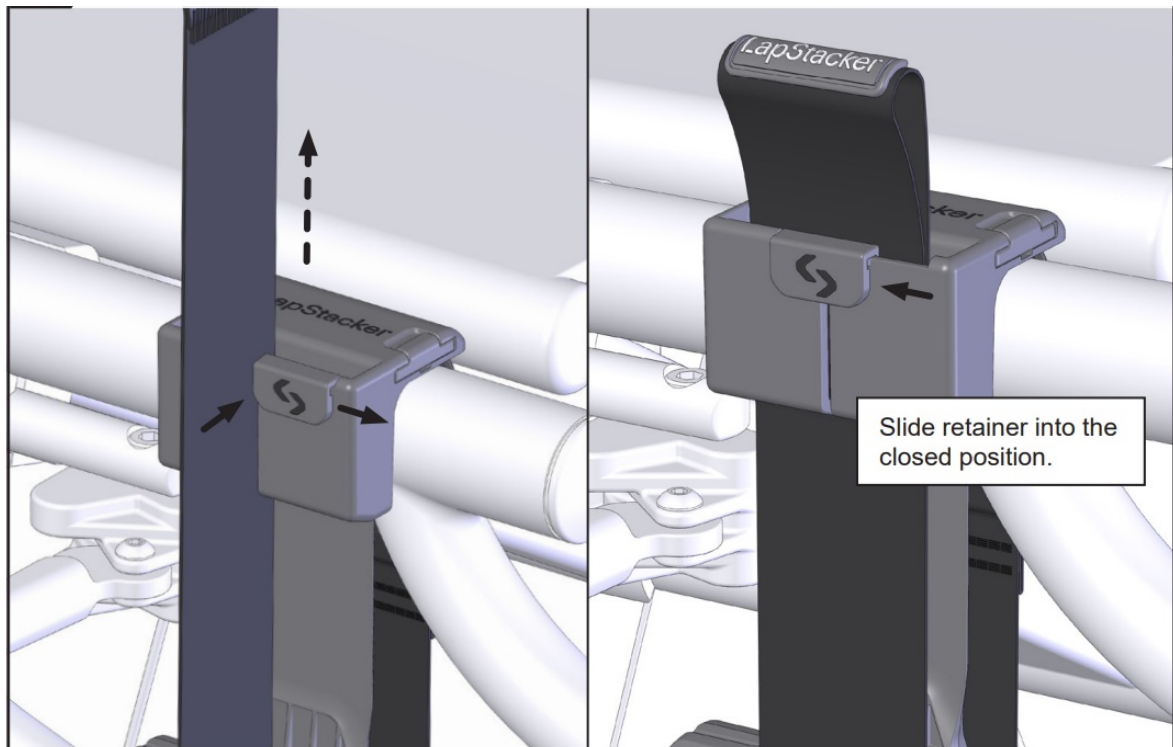


5. Pass Tension Strap around the lower tube, join buckles and tighten.





6. Pass the webbing through the Buckle Holder. Repeat for each side.



## Further Information

Scan for installation and troubleshooting tips.



<https://qrcodes.pro/7W5cA7>

Made with love by

≥ adaptdefy®

[adaptdefy.com](https://adaptdefy.com)

[info@adaptdefy.com](mailto:info@adaptdefy.com)



@adaptdefy



@adaptdefy




@adaptdefy



@adaptdefy

---

## Documents / Resources

	<a href="#">adaptdefy LapStacker Flex Retractable Carry System for Wheelchair</a> [pdf] Installation Guide e LapStacker Flex Retractable Carry System for Wheelchair, Flex Retractable Carry System for Wheelchair, Retractable Carry System for Wheelchair, Carry System for Wheelchair, Wheelchair
---	--

## References

- ≥ [Adaptdefy - Live a greater than life.](#)
- ≥ [LapStacker Warranty & Disclaimer](#)
- [User Manual](#)

[Manuals+](#), [Privacy Policy](#)

This website is an independent publication and is neither affiliated with nor endorsed by any of the trademark owners. The "Bluetooth®" word mark and logos are registered trademarks owned by Bluetooth SIG, Inc. The "Wi-Fi®" word mark and logos are registered trademarks owned by the Wi-Fi Alliance. Any use of these marks on this website does not imply any affiliation with or endorsement.