



# ADA Solar RGB LED Lighting System User Manual

[Home](#) » [ADA](#) 

## Contents

- [1 ADA Solar RGB LED Lighting System](#)
- [2 Safety Instruction](#)
- [3 Special features](#)
- [4 Product Detail](#)
- [5 Usage Instructions](#)
- [6 Special features](#)
- [7 Usage](#)
- [8 Installation of Shade](#)
- [9 Turning on the lamp](#)
- [10 Maintenance](#)
- [11 Specifications](#)
- [12 Documents / Resources](#)



## ADA Solar RGB LED Lighting System



## Safety Instruction

Read the following safety instructions thoroughly before using this product. A failure to adhere to the following

safety instructions can result in electrical shock, fire, burns and other serious accident.

- The product is a pendant type light fixture for planted aquariums.
- The product is intended to be hung from ceiling or Solar RGB Stand (optional).
- Do not place its lighting unit directly on the rims or on the glass lid of an aquarium.
- Provide at least 30cm between the water surface and the lighting unit.
- The lighting unit and AC adapter get very hot when the light is on or immediately after it is turned off. Wait until they cool off before handling them.
- Never touch the radiation fin
- Use only the supplied AC adapter. Using other adapters may cause a short circuit, electrical shock, and/or fire.
- LED lights cannot be replaced due to the nature of the product. The light source contained in this light fixture shall only be replaced by the manufacturer or its service agent or a similarly qualified person.
- Do not attempt to disassemble or modify the product. If the product is repaired by another company or if a modification is made to the product, ADA will not accept the product for repair.
- Hire a qualified electrician if electrical work, such as wiring above ceiling or in a wall, is required.
- Consult a contractor before hanging the product with hooks from ceiling to make sure that both the ceiling and hooks are strong enough for the weight of the lighting unit (2.85Kg).
- Water droplets on the AC adapter or Power plug, or water running down the cable or cord and wetting the AC adapter or power plug, may cause fire or electric shock.

## **Special features**

The product is a pendant type light fixture for planted aquariums. The product is intended to be hung from ceiling or Solar RGB Stand (optional).

## **Product Detail**

- Wire clamps 2 pieces
- Hanging wires
- Lighting unit cable 3.8m AC Adapter cable 0.75m
- Connector Plug in firmly
- Power supply switch
- AC adapter
- Radiation fin
- Power supply cable 2m
- Diffuser cover Lighting unit
- Shade Y2
- The supplied Power supply cable is designed exclusively for the AC adapter of this product. Please be sure to use the supplied Power supply cable with the AC adapter.
- Hex key wrench

## **Usage Instructions**

1. Make sure all parts are included before putting the product together for operation. If any parts are missing or damaged, contact your dealer immediately.
2. The installation of the lighting unit: Suspend the lighting unit from Solar RGB Stand (optional) or from the ceiling. Use ceiling hooks.

**Note:** Do not attempt to disassemble or modify the product. If the product is repaired by another company or if a modification is made to the product, ADA will not accept the product for repair. Take the product to the dealer from whom you purchased the product if the product needs to be repaired. Pack the product carefully to avoid damage in transit.

Consult a contractor before hanging the product with hooks from ceiling to make sure that both the ceiling and hooks are strong enough for the weight of the lighting unit (2.85Kg). Hire a qualified electrician if electrical work, such as wiring above ceiling or in a wall, is required. Water droplets on the AC adapter or Power plug, or water running down the cable or cord and wetting the AC adapter or power plug, may cause fire or electric shock.

※Read the following safety instructions thoroughly before using this product. A failure to adhere to the following safety instructions can result in electrical shock, fire, burns and other serious accident.

### **Safety Instruction**

- This product is a pendant type light fixture for planted aquariums. The product is intended to be hung from ceiling or Solar RGB Stand (optional). Do not place its lighting unit directly on the rims or on the glass lid of an aquarium.
- Be very careful not to drop this product into water or submerge it in water. This product is not waterproof.
- This product is for indoor use only. It cannot be used outdoors. Do not install this product in a highly humid or dusty area.
- Use this product within a specified temperature range of 0 to 35°C. The light may not turn on properly or fire may result if used in a very high temperature area.
- Do not allow condensation to form over the surface or on the inside of the light fixture. This can result in fire, electrical shock or damage to the product.
- Do not use this product in an area with poor power supply conditions. Lamps may flicker or turn off.
- Do not use this product near a radio or television. The product may cause a noise problem.
- This product cannot be dimmed using a dimmer. Do not connect this product to a dimmer system.
- Do not apply excessive force when handling the Lighting unit. This may result in damage to the product. Be extra careful when handling the radiation fin of the lighting unit.
- The AC adapter included in this product package is for this product only, do not use it on other products. Do not allow water to splash on the lighting unit or AC adapter. This will result in a short circuit, electrical shock and/or fire. Provide at least 30cm between the water surface and the lighting unit.
- The lighting unit and AC adapter get very hot when the light is on or immediately after it is turned off. Wait until they cool off before handling them. Never touch the radiation fin and AC adapter until they cool down, since they can become extremely hot.
- Do not cover the lighting unit or AC adapter with cloth, paper, or insulation. Heat will build up and may result in fire or damage to the product.
- Do not damage a cable or cord of this product with a sharp object, such as a knife. Damaged insulation can result in a short circuit, electrical shock, and/or fire.
- ADA will not be responsible for damage to the product resulting from such causes as an improper installation, or use, or modification of the product and/or connecting to an incompatible power source.
- LED lights cannot be replaced due to the nature of the product.
- The light source contained in this light fixture shall only be replaced by the manufacturer or its service agent or a similarly qualified person.
- Do not attempt to disassemble or modify the product. If the product is repaired by another company or if a

modification is made to the product, ADA will not accept the product for repair.

- Take the product to the dealer from whom you purchased the product if the product needs to be repaired. Pack the product carefully to avoid damage in transit.
- Hire a qualified electrician if electrical work, such as wiring above ceiling or in a wall, is required.
- Consult a contractor before hanging the product with hooks from ceiling to make sure that both the ceiling and hooks are strong enough for the weight of the lighting unit (2.85Kg, including Shade). (For safety reasons, their load-bearing capacity should be enough to support 3 to 5 times the weight of the lighting unit.)
- Do not forcibly bend, twist or pull a cable or cord of this product. This can cause damage to the cable or cord and may result in fire or electrical shock.
- Immediately stop using this product if its cable or cord is damaged (such as exposed core and broken wire), otherwise, fire or electrical shock may result.

- **Type Y for Lighting unit cable and AC adapter cable**

If the Lighting unit cable or AC adapter cable of this light fixture is damaged, it shall be exclusively replaced by the manufacturer or its service agent or a similarly qualified person in order to avoid a hazard.

- Water droplets on the AC adapter or Power plug, or water running down the cable or cord and wetting the AC adapter or power plug, may cause fire or electric shock. When using an electrical outlet located lower than the aquarium, we recommend slackening the Power supply cable and AC adapter cable below the AC adapter and Power plug, or using the Power Cord S-70 (optional).
- Do not look directly into LED light when the lamp is ON.
- The supplied Power supply cable is designed exclusively for the AC adapter of this product. Please be sure to use the supplied Power supply cable with the AC adapter. Use of any power cord other than the supplied Power supply cord may cause damage to the product. Do not use the supplied Power supply cable with anything other than this product.
- **Type X for Power supply cable** If the Power supply cable of this light fixture is damaged, it shall be replaced by a special cord or cord exclusively available from the manufacturer or its service agent.
- The surface of the AC adapter gets very hot. Be careful not to burn yourself. **KEEP OUT OF REACH OF CHILDREN.**
- Do not place any objects near the AC adapter. Please note that the AC adapter becomes high temperature, and may cause deterioration or discoloration of adjacent objects.
- Do not wrap the AC adapter in an insulating material or use in an airtight container. Heat cannot escape and may cause fire.
- **AQUARIUM USE ONLY.**  
Solar RGB Limited Edition Shade
- This product is made of stainless steel and has some sharp portions. Handle with care. The radiation fin of Solar RGB Limited Edition also has some sharp portions. Wear gloves when installing this product.
- Install this product securely to avoid it from falling.
- **KEEP OUT OF REACH OF CHILDREN.**

## **Special features**

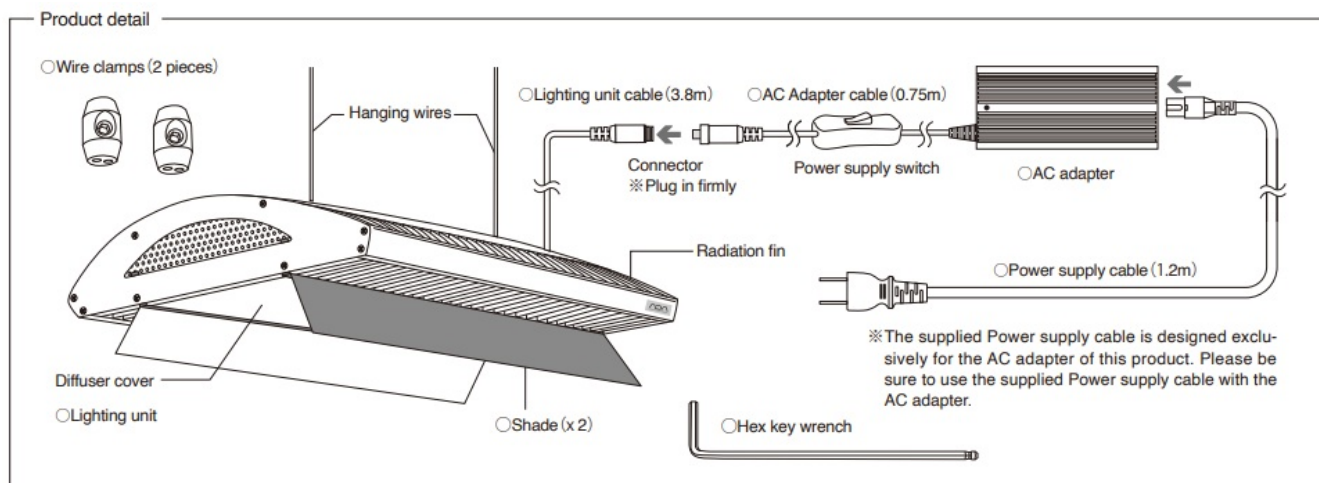
Solar RGB Limited Edition is a high color rendering LED lighting system for planted aquarium. By optimizing RGB (Red, Green and Blue) output using our unique lighting control technologies, aquatic plants grow healthily and their original red and green colors look vivid, enabling more attractive appearance of planted aquarium. The soft-start function allows the light to turn on gently. The included special shades will increase the illuminance directly below, and reduce light leakage to the front and rear of the lighting unit. In addition, this product features high

functionality as well as excellent design by incorporating the radiation fin, which is crucial to high-output LED lights, into the product design.

※One unit of Solar RGB Limited Edition is designed for use up to W90cm aquarium tank

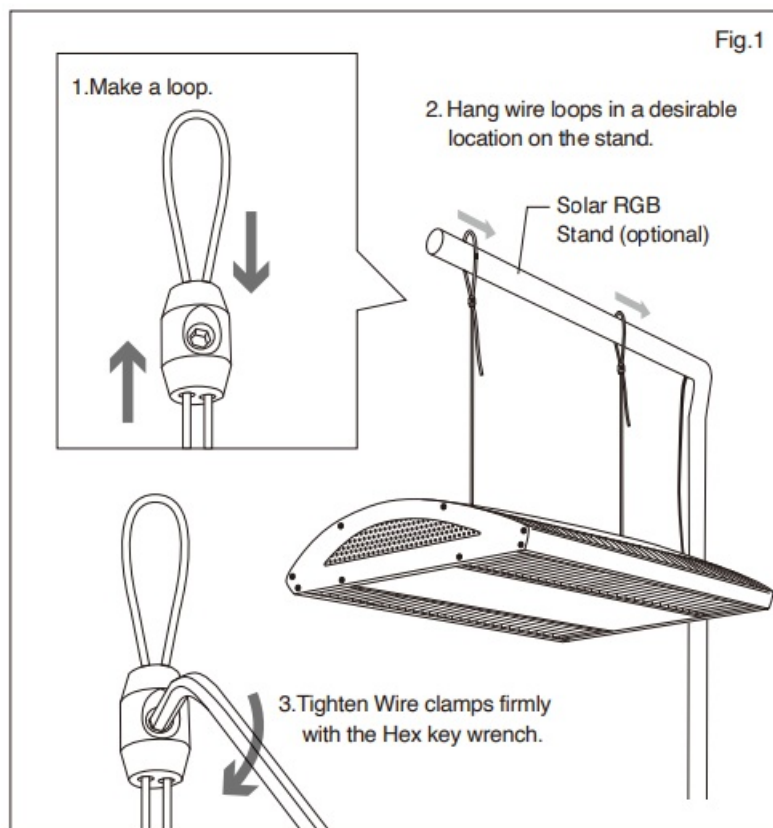
## Usage

Make sure all parts are included before putting the product together for operation. If any parts are missing or damaged, contact your dealer immediately.



## The installation of the lighting unit

1. Suspend the lighting unit from Solar RGB Stand (optional) or from the ceiling. Use ceiling hooks strong enough to support the weight of lighting unit (2.85Kg, including Shade) if the lighting unit is to be hung from the ceiling. Install the stand or hooks according to the manufacturer's instructions.
2. Loosen the screws of Wire clamps with an accessory Hex key wrench and make a loop with each of the two hanging wires from the lighting unit and secure the loop with a wire clamp. Adjust the length of the wires according to the height of the lighting unit and tighten the screws of Wire clamps with the Hex key wrench (Fig.1)



※To prevent the hanging wires from moving and/or falling off the stand, tighten Wire clamps after desirable position is determined.

※Do not cut the Hanging wires before installing the Lighting unit as this may make it difficult to run the wire through a Wire clamp.

3. Place the loops on the bar of the stand or ceiling hooks. Make sure that hooks are installed securely so that the Lighting unit will not fall.

※Make sure that the Lighting unit is hung horizontally level at least 30cm above the water surface.

※Avoid the lamp cord from drooping over the Lighting unit.

## Installation of Shade

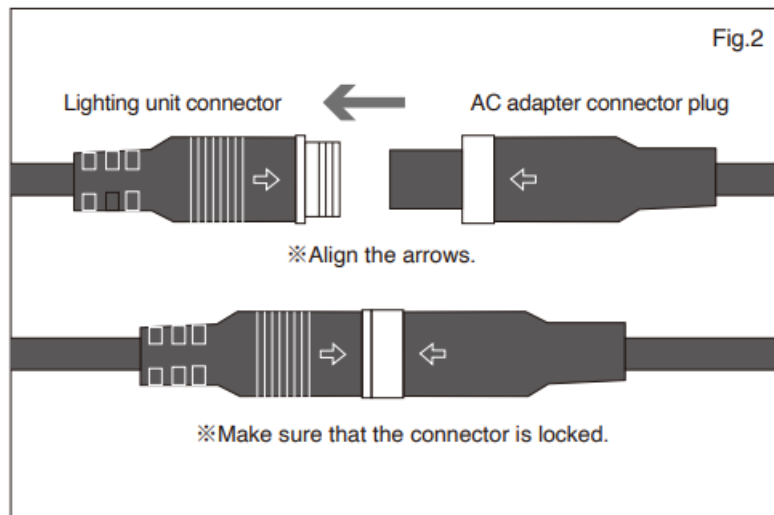
- Turn off the power of Solar RGB Limited Edition during the installation of the Shade.
- Install the Shade securely as shown in the illustration.
- Be careful not to damage or scratch Solar RGB Limited Edition while installing the Shade.

The paint of the Shade may come off during the installation process.

- This product is designed exclusively for Solar RGB Limited Edition. It cannot be installed on other lighting products.

## Turning on the lamp

1. Fully insert the connector plug of the AC adapter cable into the Lighting unit connector. After the connection, make sure that the connector is locked. (Fig.2)



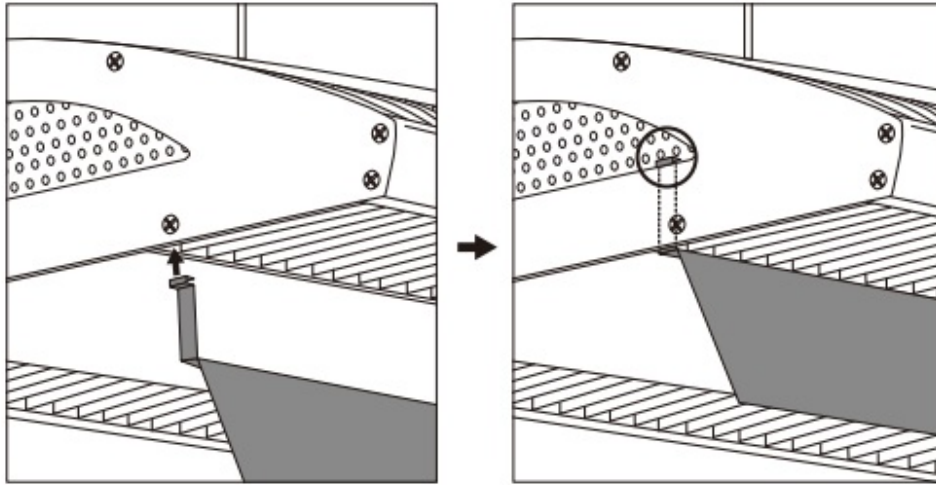
2. Make sure the Power supply switch is turned off, and then connect the Power supply cable to the AC adapter. Next, insert the plug of the Power supply cable into the electrical outlet.
3. The lamp turn on when the Power supply switch is set to ON ( | ). If the lamp do not turn on, a poor connection may be suspected. Be sure to unplug the Power supply cable before checking the cable connection.  
 ※NA Control Timer II can control 2 units of Solar RGB Limited Edition.  
 When using a product other than NA Control Timer II, use a product that is compatible with 15A in the range of 100 – 240V, and matches the voltage of the operating environment (or usage region).

## Maintenance

- Avoid dust accumulation in the lighting unit. If there is dust, blow it off using a blower or other tools.
- Remove dirt on the Lighting unit or Diffuser cover with a lightly moistened cloth.  
Do not use detergent or solvent.
- Store the light fixture in a dry place if it is not going to be used for a long period of time. Humidity causes insulation to degrade and a short circuit or electrical shock may result.  
 ※Turn the power off and wait until the Lighting unit is completely cool to perform maintenance work.

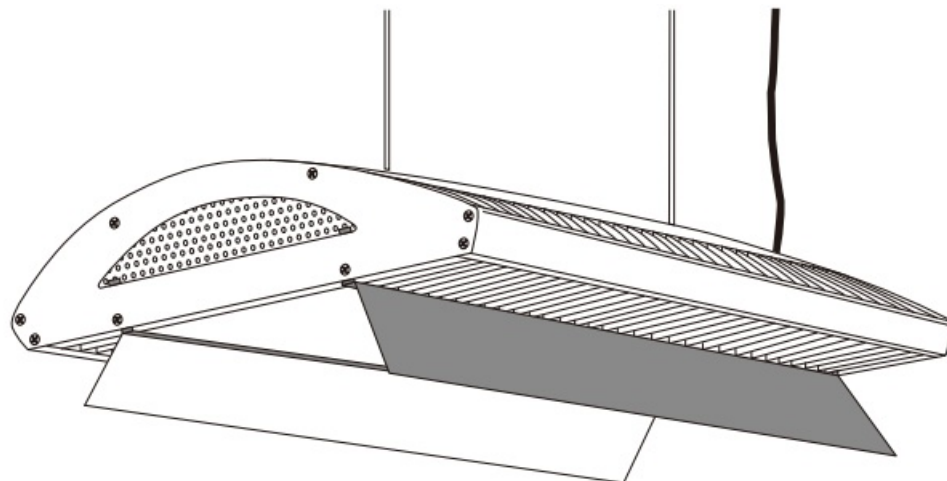
## Specifications

- Size Lighting unit : W43×D28×H6.4 cm
- AC adapter: W15×D6×H4 cm
- Weight Lighting unit : 2.6kg AC adapter 0.48kg Shade 0.25kg 2pcs
- Input voltage AC100 240V 50/60Hz
- Rated Power 120W ± 5
- Power consumption 115W ± 5
- Luminous flux 3,750 4,250lm
- Illuminance Around 21,000Lx (Central illuminance at 30cm distance)
- Color temperature Approximately 9,000 12,000K (Due to the nature of LED lighting,  
there are variations in color temperature)
- LED 130 RGB LED×130
- LED lifetime Over 30,000 hours (subject to operating environment)
- Operating temperature range 0 35°C



1. Hold the Shade with its coated surface outside and reflecting surface inside. Insert the mounting brackets into the gap between the outer plate of the Solar RGB Limited Edition main unit and the outermost radiation fin.
2. Insert the mounting brackets securely until a click is heard and the claws fit into the hole on the outer plate of the Solar RGB Limited Edition main unit.

#### Illustration of successfully installed Shade



※To remove the shade, push and release the claws downwards.

aaau Design amano CO.,LTD. 8554-1  
 Urushiyama, Nishikan-ku, Niigata 953-0054, Japan  
 MADE IN CHINA

#### Documents / Resources

	<a href="#">ADA Solar RGB LED Lighting System</a> [pdf] User Manual Solar RGB LED Lighting System, Solar RGB, LED Lighting System, Lighting System
--	---