



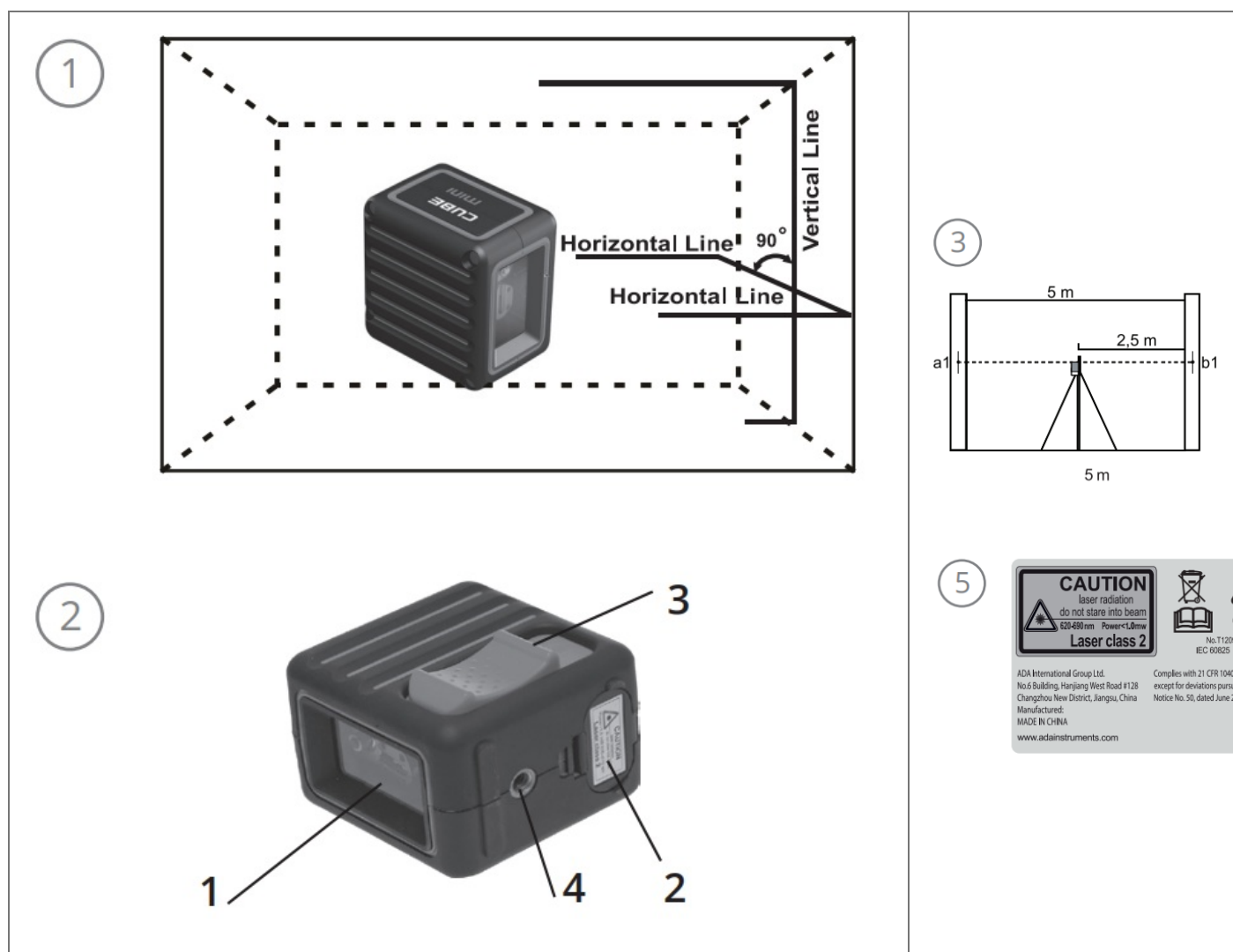
ADA INSTRUMENTS A00461 Cube Mini Professional Laser User Manual

[Home](#) » [ADA INSTRUMENTS](#) » ADA INSTRUMENTS A00461 Cube Mini Professional Laser User Manual 





OPERATING MANUAL
CUBE MINI Line Laser
adainstruments.com



THE MANUFACTURER RESERVES THE RIGHT TO MAKE CHANGES (NOT HAVING AN IMPACT ON THE SPECIFICATIONS) TO THE DESIGN, COMPLETE SET WITHOUT GIVING PRIOR WARNING.

Contents

- 1 APPLICATION
- 2 SPECIFICATIONS
- 3 CHANGE OF BATTERIES
- 4 OPERATION
- 5 TO CHECK PLUMB
- 6 CARE AND CLEANING
- 7 LASER CLASSIFICATION
- 8 SAFETY INSTRUCTIONS
- 9 WARRANTY
- 10 WARRANTY CARD
- 11 Documents / Resources
 - 11.1 References
- 12 Related Posts

APPLICATION

Line Laser ADA CUBE MINI is designed to check the horizontal and vertical position of the surfaces of the

elements of building structures and also to transfer the angle of inclination of the structural part to similar parts during construction and installation works.

SPECIFICATIONS

Leveling Range..... self-leveling, $\pm 3^\circ$
Accuracy..... $\pm 1/12$ in at 30 ft (± 2 mm/10m)
Working range..... 65 ft (20 m)
Power Supply..... 2xAA Batteries Alkaline
Operation time..... Approx. 15 hours, if everything is on
Laser Source, laser class..... 1x635nm, 2
Tripod thread..... 1/4"
Operating temperature..... 14°F to 113°F (-10°C $+45^\circ\text{C}$)
Dimensions..... 65x65x45 mm
Weight..... 0,42lb (190g)

1 LASER LINES

2 FEATURES

1. laser emitting window
2. battery cover
3. compensator switch
4. tripod mount 1/4"

CHANGE OF BATTERIES

Open the battery compartment. Insert batteries. Take care to correct polarity. Close battery compartment.
ATTENTION: If you are not going to use an instrument for a long time, take out batteries.

OPERATION

Place the line laser on the working surface or mount it on the tripod/pillar or wall mount (comes with the instrument). Switch on the line laser: turn the compensator switch (3) to the position "ON". When enabled, the vertical and horizontal plane is projected constantly. Visual alarm (blinking line) indicates that the device was not installed within the compensation range $\pm 3^\circ$. To properly work align the unit in a horizontal plane.

3 TO CHECK THE ACCURACY OF LINE LASER (SLOPE OF PLANE)

Set up the line laser between two walls, the distance is 5m. Turn on the Line Laser and mark the point of the cross laser line on the wall. Set up the instrument 0,5-0,7m away from the wall and make, as described above, the same marks. If the difference $\{a1-b2\}$ and $\{b1-b2\}$ is less then the value of "accuracy" (see specifications), there is no need in calibration. For example: when you check the accuracy of Cross Line Laser the difference is $\{a1-a2\}=5$ mm and $\{b1-b2\}=7$ mm. The instrument's error: $\{b1-b2\}-\{a1-a2\}=7-5=2$ mm. Now you can compare this error with standard error.

If the accuracy of Line Laser isn't corresponding with claimed accuracy, contact the authorized service center.

4 TO CHECK THE ACCURACY OF HORIZONTAL BEAM

Choose a wall and set laser 5M away from the wall. Turn on the laser and the cross laser line is marked A on the wall. Find another point M on the horizontal line, the distance is around 2.5m. Swivel the laser, and another cross point of the cross laser line is marked B. Please note the distance of B to A should be 5m. Measure the distance between M to cross laser line, if the difference is over 3mm, the laser is out of calibration, please contact the

seller to calibrate the laser.

TO CHECK PLUMB

Choose a wall and set laser 5m away from the wall. Mark point A on the wall, please note the distance from point A to ground should be 3m. Hang a plumb line from A point to the ground and find a plumb point B on the ground. turn on the laser and make the vertical laser line meet point B, along the vertical laser line on the wall and measure the distance 3m from the point B to another point C. Point C must be on the vertical laser line, it means the height of the C point is 3m. Measure the distance from point A to point C, if the distance is over 2 mm, please, contact the seller to calibrate the laser.

PRODUCT LIFE

The product life of the tool is 7 years. The battery and the tool should never be placed in municipal waste. Date of production, manufacturer's contact information, country of origin are indicated on the product sticker.

CARE AND CLEANING

Please handle line laser with care. Clean with a soft cloth only after any use. If necessary damp cloth with some water. If the instrument is wet clean and dry it carefully. Pack it up only if it is perfectly dry. Transport in original container/case only.

Note: During transport On/Off compensator lock (3) must be set to position "OFF". Disregard may lead to damage of compensator.

SPECIFIC REASONS FOR ERRONEOUS MEASURING RESULTS

- Measurements through glass or plastic windows;
- Dirty laser emitting window;
- After line laser has been dropped or hit. Please check the accuracy;
- Large fluctuation of temperature: if instrument will be used in cold areas after it has been stored in warm areas (or the other way round) please wait some minutes before carrying out measurements.

ELECTROMAGNETIC ACCEPTABILITY (EMC)

- It cannot be completely excluded that this instrument will disturb other instruments (e.g. navigation systems);
- will be disturbed by other instruments (e.g. intensive electromagnetic radiation nearby industrial facilities or radio transmitters).

5 LASER CLASS 2 WARNING LABEL ON THE LINE LASER

LASER CLASSIFICATION

The tool is a laser class 2 laser product with power <1 mW and wavelength 635 nm. Laser is safe in ordinary conditions of usage. Complies with 21 CFR 1040.10 and 1040.11 except for deviations pursuant to Laser Notice No. 50, dated June 24, 2007

SAFETY INSTRUCTIONS

- Please follow up on the instructions given in the operators' manual.
- Do not stare into the beam. The laser beam can lead to an eye injury (even from greater distances).
- Do not aim the laser beam at persons or animals. The laser plane should be set up above eye level of persons.

Use the instrument for measuring jobs only.

- Do not open instrument housing. Repairs should be carried out by authorized workshops only. Please contact your local dealer.
- Do not remove warning labels or safety instructions.
- Keep instruments away from children.
- Do not use instruments in an explosive environment.

WARRANTY

This product is warranted by the manufacturer to the original purchaser to be free from defects in material and workmanship under normal use for a period of two (2) years from the date of purchase. During the warranty period, and upon proof of purchase, the product will be repaired or replaced (with the same or similar model at manufacturer's option), without charge for either part or labor. In case of a defect please contact the dealer where you originally purchased this product. The warranty will not apply to this product if it has been misused, abused, or altered. Without limiting the foregoing, leakage of the battery, bending, or dropping the unit are presumed to be defects resulting from misuse or abuse.

EXCEPTIONS FROM RESPONSIBILITY

The user of this product is expected to follow the instructions given in the operators' manual. Although all instruments left our warehouse in perfect condition and adjustment the user is expected to carry out periodic checks of the product's accuracy and general performance. The manufacturer, or its representatives, assumes no responsibility for the results of a faulty or intentional usage or misuse including any direct, indirect, consequential damage, and loss of profits. The manufacturer, or its representatives, assumes no responsibility for consequential damage, and loss of profits by any disaster (earthquake, storm, flood ...), fire, accident, or an act of a third party and/or usage in other than usual conditions. The manufacturer, or its representatives, assumes no responsibility for any damage, and loss of profits due to a change of data, loss of data and interruption of business, etc., caused by using the product or an unusable product. The manufacturer, or its representatives, assumes no responsibility for any damage, and loss of profits caused by usage other than explained in the users' manual. The manufacturer, or its representatives, assumes no responsibility for damage caused by wrong movement or action due to connecting with other products.

WARRANTY DOESN'T EXTEND TO THE FOLLOWING CASES:

1. If the standard or serial product number will be changed, erased, removed, or will be unreadable.
2. Periodic maintenance, repair, or changing parts as a result of their normal runout.
3. All adaptations and modifications with the purpose of improvement and expansion of the normal sphere of product application, mentioned in the service instruction, without the tentative written agreement of the expert pro- video.
4. Service by anyone other than an authorized service center.
5. Damage to products or parts caused by misuse, including, without limitation, misapplication or negligence of the terms of service instruction.
6. Power supply units, chargers, accessories, wearing parts.
7. Products, damaged from mishandling, faulty adjustment, maintenance with low-quality and non-standard materials, presence of any liquids and foreign objects inside the product.
8. Acts of God and/or actions of third persons.
9. In case of unwarranted repair till the end of the warranty period because of damages during the operation of the product, its transportation and storing, the warranty doesn't resume.

WARRANTY CARD

Name and model of the product _____
Serial number _____ Date of sale _____
Name of commercial organization _____
stamp of commercial organization _____

The warranty period for the instrument exploitation is 24 months after the date of the original retail purchase. During this warranty period, the owner of the product has the right to free repair of his instrument in case of manufacturing defects. Warranty is valid only with original warranty card, fully and clear filled (stamp or mark of the seller is obligatory). Technical examination of instruments for fault identification which is under the warranty is made only in the authorized service center. In no event shall the manufacturer be liable before the client for direct or consequential damages, loss of profit, or any other damage which occurs as a result of the instrument outage. The product is received in the state of operability, without any visible damages, in full completeness. It is tested in my presence. I have no complaints about the product quality. I am familiar with the conditions of warranty service and I agree.

purchaser signature _____

Before operating you should read service instructions!

If you have any questions about the warranty service and technical support contact the seller of this product

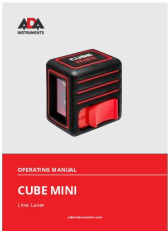


ADA International Group Ltd., No.6 Building, Hanjiang West Road #128
Changzhou New District, Jiangsu, China
Made In China

adainstruments.com



Documents / Resources

	<p>ADA INSTRUMENTS A00461 Cube Mini Professional Laser [pdf] User Manual 00461, Cube Mini Professional Laser</p>
---	--

References

-  [ADA Instruments](#)