

acv

**PD401
Series Full
Range
Speaker**



acv PD401 Series Full Range Speaker Instruction Manual

[Home](#) » [ACV](#) » acv PD401 Series Full Range Speaker Instruction Manual 

Contents

- 1 acv PD401 Series Full Range Speaker
- 2 Product Usage Instructions
- 3 FRONT REAR MOUNTING
- 4 INSTALLATION OPTIONS
- 5 RECOMMENDATIONS FOR THE USE OF SPEAKERS
- 6 Speaker dimensions
- 7 SPECIFICATIONS
- 8 Frequently Asked Questions
- 9 Documents / Resources
 - 9.1 References



acv PD401 Series Full Range Speaker



Specifications

- **Model:** ACV PD-651 6.5-inch Full Range Speaker
- **Speaker Size:** 165mm
- **Construction:** Rubber edge with paper cone
- **Frequency Range:** 100Hz – 20kHz
- **Sensitivity:** 88dB/W/m
- **Magnet:** 70 x 12mm (6.5oz)
- **Voice Coil:** 25mm ASV
- **Rated Power:** 60W
- **Peak Power:** 180W/4 Ohms

Product Usage Instructions

Front/Rear Mounting

1. **Rear Parcel Shelf Installation:** PD-691: 219x149mm, PD-621: 144mm, PD-521: 113mm, PD-421: 93mm
2. **Rear Door Installation:** Ensure positive wire is red and the negative wire is black. Maintain polarity between speakers and amplifiers for optimal performance.
3. **To Car Amplifier:** Connect according to polarity for proper functionality.

Installation Options

Attention: Read the user manual before using the speaker system. Contact a qualified car audio service center for any difficulties.

Speaker Dimensions

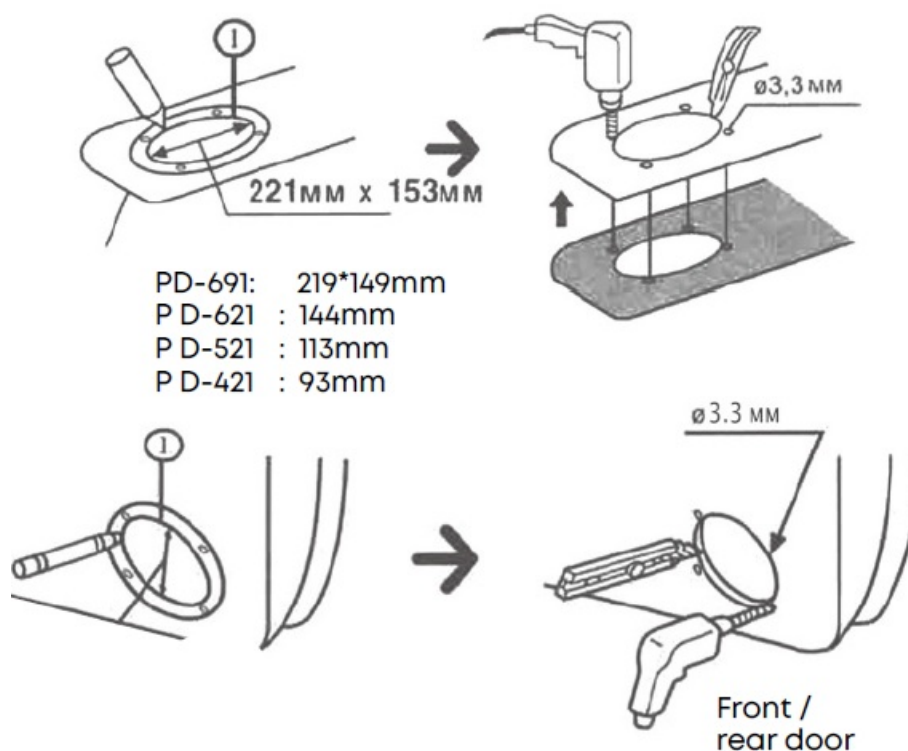
- **PD-691:** 166mm
- **PD-651:** 156mm
- **PD-521:** 164mm
- **PD-401:** 234x80mm, 165x70mm, 95x130mm, 60mm, 81x102mm, 92x60mm, 118mm, 47x51x59mm, 81mm

Specifications

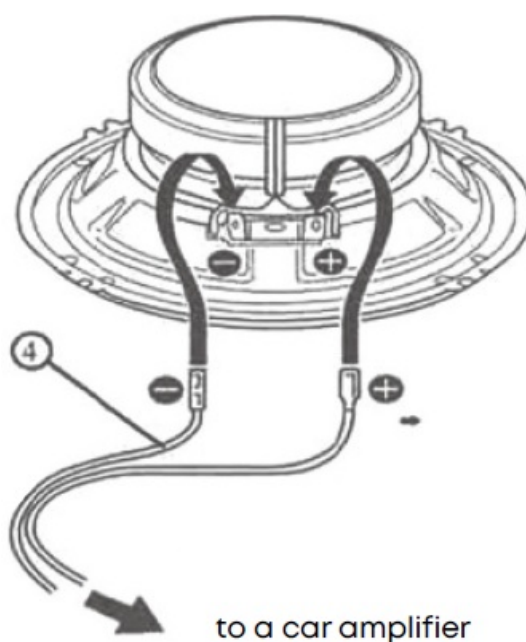
Full Range speaker series with KSV voice coil, Ferrite magnet, and dual paper cone design.

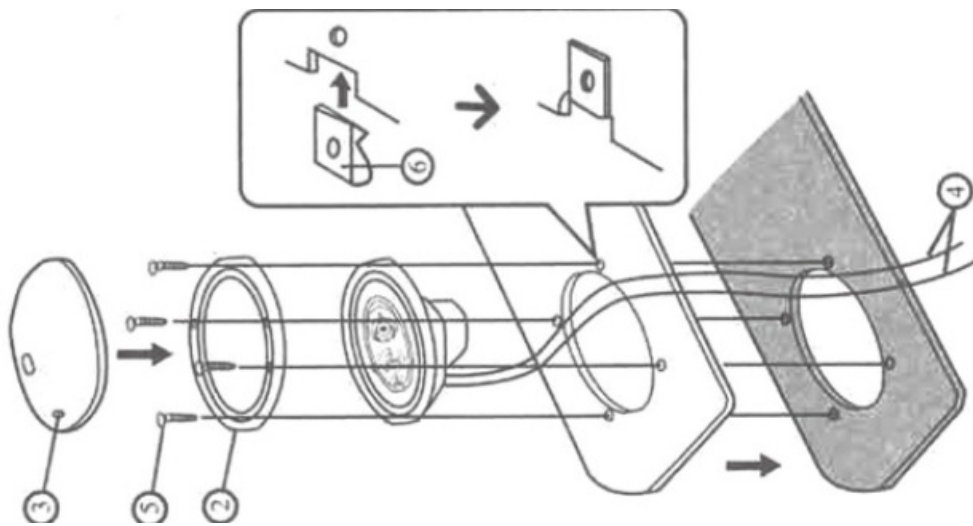
FRONT REAR MOUNTING

- Please use a mounting ring to mark position of speaker opening and fastening holes;
- Cut out opening and drill holes $\varnothing 3.3\text{mm}$. Make sure that the speaker is secured in such a way that it cannot slip or slide.
- Use the screws provided for this purpose.



- The positive wire is red,
- The negative wire is black.
- For the speaker system to work optimally, you need to maintain the polarity between the speakers and the amplifier.

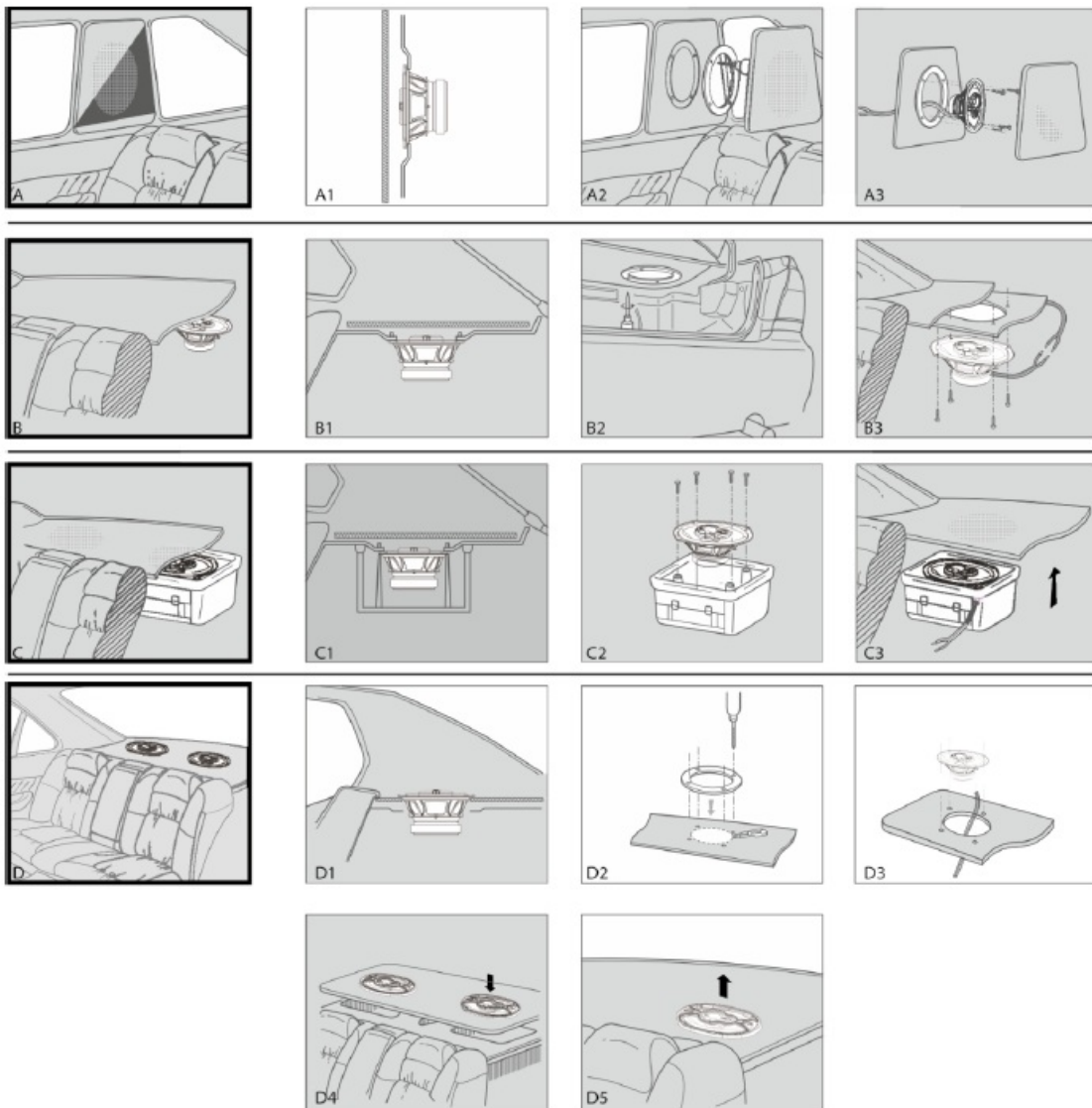




INSTALLATION OPTIONS

ATTENTION!

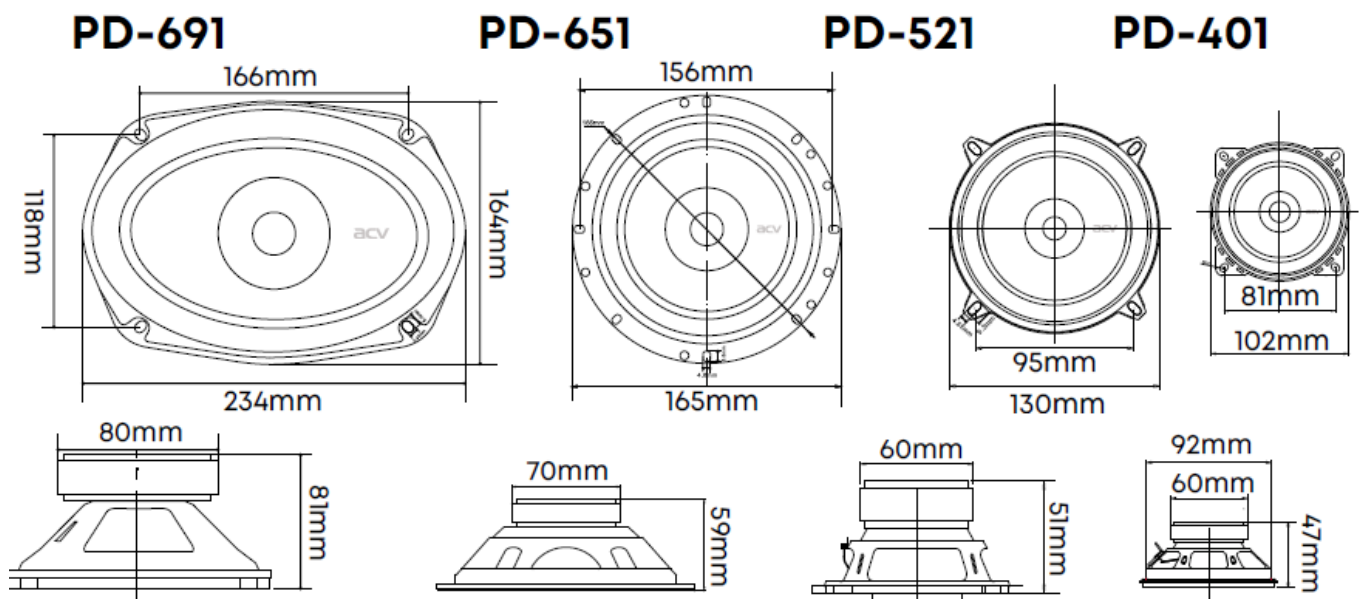
- Please read the user manual before using the speaker system. ACV reserves the right to make changes in accordance with the technical specifications.
- If you have any difficulty, please contact your nearest qualified car audio service center.



RECOMMENDATIONS FOR THE USE OF SPEAKERS

- The service life of speakers depends largely on the correct choice of amplifier, settings and acoustic design. It is necessary to select an amplifier with a rated power not exceeding the rated acoustics power.
- Correct matching of a car head unit (the source unit) with the amplifier will allow you to get a clean, undistorted signal supplied to the speakers, which will prevent overheating and failure of the voice coil.
- Like a new car that has just rolled off the assembly line, the speakers of which only what was taken out of the box, it is necessary to warm-up first.
- Parts of the speaker moving system cannot immediately work at their best of a necessary level, just like an athlete cannot show a decent result without a preliminary warm-up.
- A certain period of time must pass before the voice coil centering washer and cone with suspension are flexible enough and elasticity for adequate performance. A new speaker takes 70-100 hours warming up at 30% power.
- Of course, the figures are approximate.
- If during operation of the acoustics at high volume You feel a strange smell, you need to reduce volume and let the speaker cool down at a low volume.
- Recommended settings for a a car head unit volume level is no more than 80%.
- HPF should be set to 70-80Hz, bass boost – 0. Amplifier sensitivity should be set to 50%.

Speaker dimensions



SPECIFICATIONS

Model: ACV PD-691

- **6 x 9 inches** Full Range speaker
- **Rubber edge** with paper cone, steel basket,
- **Frequency range:** 70Hz ~ 25kHz,
- **Sensitivity:** 91dB/W/m
- **Magnet:** Ø80 x 15mm (10oz)
- **Voice coil:** Ø25mm ASV
- **Rated power:** 80W,
- **Peak power:** 240W/4Ω

Model: ACV PD-651

- **6.5-inch** Full Range speaker
- **165mm Rubber** edge with paper cone, steel basket,
- **Frequency range:** 100Hz ~ 20kHz,
- **Sensitivity:** 88dB/W/m
- **Magnet:** $\Phi 70 \times 12\text{mm}$ (6.5oz)
- **Voice coil:** $\Phi 25\text{mm}$ ASV,
- **Rated power:** 60W,
- **Peak power:** 180W/4 Ω

Model: ACV PD-521

- **5-inch** Full Range speaker
- **131mm Rubber edge** with paper cone, steel basket,
- **Frequency range:** 100Hz ~ 20kHz,
- **Sensitivity:** 88dB/W/m
- **Magnet:** $\Phi 70 \times 10\text{mm}$ (5.4oz)
- **Voice coil:** 20mm ASV,
- **Rated power:** 50W,
- **Peak power:** 120W/4 Ohms

Model: ACV PD-401

- **4-inch** Full Range speaker 101mm
- **Rubber edge** with paper cone, steel basket,
- **Frequency range:** 100Hz ~20kHz
- **Sensitivity:** 88dB/W/m
- **Magnet:** $\Phi 60 \times 10\text{mm}$ (3.8oz)
- **Voice coil:** $\Phi 20\text{mm}$ ASV,
- **Rated power:** 30W,
- **Peak power:** 90W/4 Ω

SAFE DISPOSAL

- Your device is designed and manufactured from high quality materials and components that can be recycled and reused.
- If the product has symbol with a crossed out wheelee bin, this means that the product complies European Directive 2002/96/EC. Familiarize yourself with your local separate collection system electrical and electronic goods.
- Follow local regulations. Recycle old ones devices separately from household waste. Proper disposal of your product will prevent possible negative consequences for the environment and human health.



- The manufacturer sets the service life of the product – 3 years Autotech Industrial Limited 1318-19.13/F, Hollywood Plaza, 610 Nathan Road, Mongkok, Kowloon, Hong Kong, China.
- Autotek Industrial Limited” 1318-19.13/F, Hollywood Plaza, 610 Nathan Road, Mongkok, Kowloon, Hong Kong, China



Frequently Asked Questions

1. What are the key features of the PD401, PD521, PD651, and PD691 speakers?

- The speakers are full-range with KSV voice coils, Ferrite magnets, and a dual paper cone design for enhanced acoustic performance.


2. How should I mount the speakers in my vehicle?

- Refer to the user manual for specific mounting instructions based on your vehicle type. Ensure proper wiring connection for optimal sound quality.

3. What are the power ratings for the different speaker models?

- **The power ratings vary by model:** PD401 – Rated power: 30W, Peak power: 90W/4 Ohms; PD521
- **Rated power:** 50W, Peak power: 120W/4 Ohms; PD651 – Rated power: 60W, Peak power: 180W/4 Ohms; PD691 – Detailed specifications not provided.

Documents / Resources

	acv PD401 Series Full Range Speaker [pdf] Instruction Manual PD401, PD521, PD651, PD691, PD401 Series Full Range Speaker, PD401 Series, Full Range S peaker, Range Speaker
---	--

References

- [User Manual](#)