



ACURITE 06014 Iris Weather Station with Mini Wireless Display Instruction Manual

[Home](#) » [Acurite](#) » ACURITE 06014 Iris Weather Station with Mini Wireless Display Instruction Manual 

ACU RITE®

Instruction Manual
Accurate Iris™ (5-in-1)
Weather Sensor



(Dual Solar Panel)
model 06014

Contents

- 1 06014 Iris Weather Station with Mini Wireless Display
- 2 SETUP
- 3 Calibrate the Rain Gauge
- 4 Specifications
- 5 FCC Information
- 6 Limited 1-Year Warranty
- 7 OPERATION
- 8 Troubleshooting
- 9 Documents / Resources
 - 9.1 References

06014 Iris Weather Station with Mini Wireless Display

Package Contents

1. AcuRite Iris Weather Sensor
2. Mounting Hardware
3. Sensor Mounting Bracket
4. Instruction Manual

IMPORTANT

PRODUCT MUST BE REGISTERED TO RECEIVE WARRANTY SERVICE

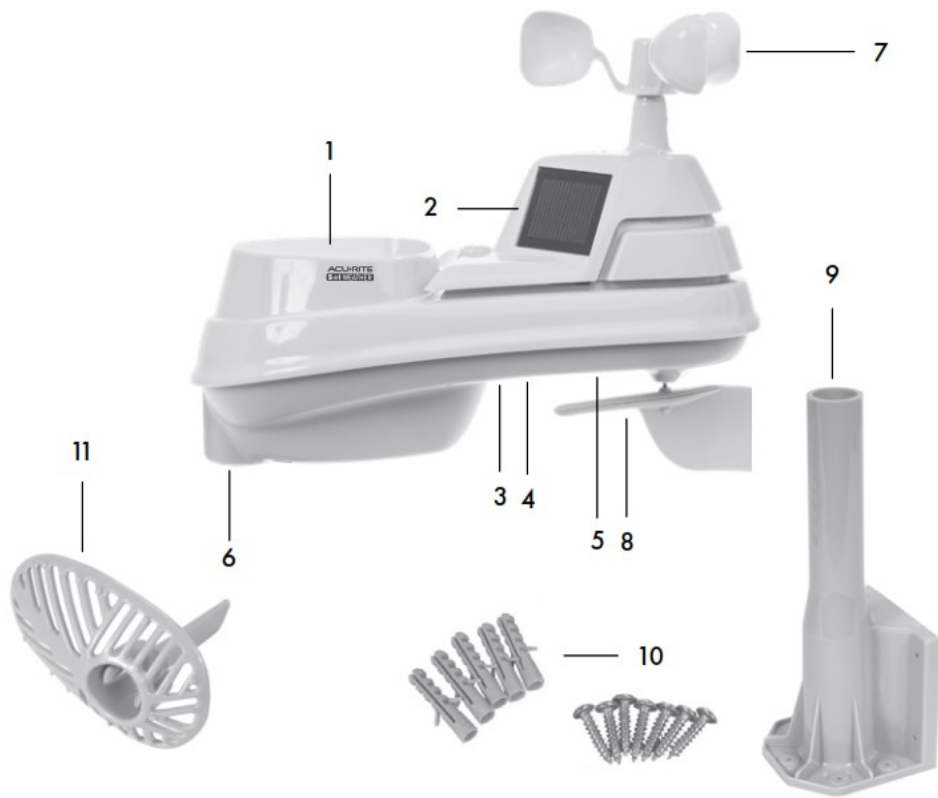
PRODUCT REGISTRATION

Register online to receive 1-year warranty protection

www.acurite.com/product-registration

Questions? Visit www.acurite.com/support

Features & Benefits



Açu Rite Iris SENSOR

1. Rainfall Collector Funnel

2. Solar Cell Panel

Converts sunlight into power to run internal aspirating fan.

Internal Aspirating Fan (not shown) Draws ambient air into sensor to reduce solar radiation heating, resulting in more accurate temperature measurement.

3. A-B-C Switch

ID code that must match display's A-B-C switch to ensure units synchronize.

4. Battery Compartment

5. Temperature & Humidity Sensors (internal)

6. Mounting Point

7. Wind Speed Anemometer

8. Wind Direction Vane

9. Mounting Bracket

10. Mounting Hardware

Includes 5 anchors & the following screws:

Qty	Diameter	Length
5	#4	3/4"
1	#4	1/2"
1	#6	1/2"

11. Debris Filter

Pre-installed to prevent debris from entering the rain gauge.

SETUP

AcuRite Iris Sensor Setup

1. Set the A-B-C Switch

Locate the A-B-C switch inside the battery compartment. Set the A-B-C switch to A, B or C. You must select the same letter choice for both the sensor and the companion unit (not included) in order for the units to synchronize.

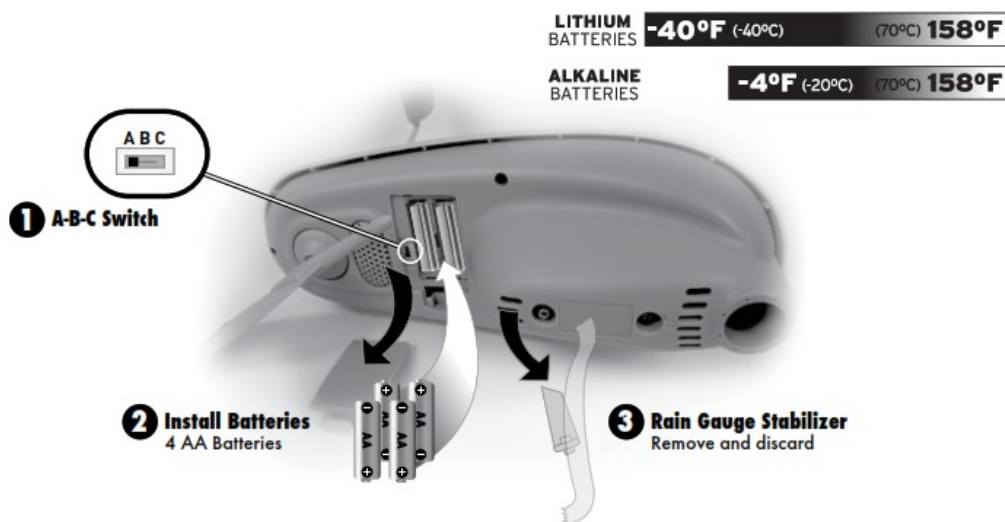
2. Install or Replace Batteries

Batteries **MUST** be installed for this product to operate. AcuRite recommends high quality alkaline or lithium batteries for the best product performance. Heavy duty or rechargeable batteries are not recommended.

The AcuRite Iris sensor requires lithium batteries in low temperature conditions. Cold temperatures can cause alkaline batteries to function improperly. Use lithium batteries in the Accurate Iris sensor for temperatures below -4°F / -20°C.

3. Remove Rain Gauge Stabilizer

Locate and remove the rain gauge stabilizer (plastic tab) taped into the bottom of the sensor. The rain gauge will not function until this is removed.



PLEASE DISPOSE OF OLD OR DEFECTIVE BATTERIES IN AN ENVIRONMENTALLY SAFE WAY AND IN ACCORDANCE WITH YOUR LOCAL LAWS AND REGULATIONS.

BATTERY SAFETY: Clean the battery contacts and also those of the device prior to battery installation. Remove batteries from equipment which is not to be used for an extended period of time. Follow the polarity (+/-) diagram in the battery compartment. Promptly remove dead batteries from the device. Dispose of used batteries properly. Only batteries of the same or equivalent type as recommended are to be used. **DO NOT** incinerate used batteries. **DO NOT** dispose of batteries in fire, as batteries may explode or leak.

DO NOT mix old and new batteries or types of batteries (alkaline/standard). **DO NOT** use rechargeable batteries. **DO NOT** recharge non-rechargeable batteries. **DO NOT** short-circuit the supply terminals.

Placement for Maximum Accuracy

AcuRite sensors are sensitive to surrounding environmental conditions. Proper placement of both the display and the sensor are critical to the accuracy and performance of this product.

AcuRite Iris Sensor Placement

The AcuRite Iris sensor is designed to remain outdoors all year long.

Choose an open location with no obstructions above or around the sensor for the most accurate measurements.



Important Placement Guidelines

Display and sensor must be within 330 feet (100 meters) of each other.

MAXIMIZE WIRELESS RANGE

Place units away from large metallic items, thick walls, metal surfaces, or other objects that may limit wireless communication.

PREVENT WIRELESS INTERFERENCE

Place units at least 3 feet (.9 m) away from electronic devices (TV, computer, microwave, radio, etc.).

LOCATE AWAY FROM HEAT SOURCES

Position sensor away from heaters, air conditioners, chimneys, exhaust vents, asphalt and concrete (surfaces that radiate heat).

LOCATE AWAY FROM HUMIDITY SOURCES

Avoid installing the sensor near pools, spas, or other bodies of water. Water sources may impact humidity accuracy.

LOCATE AWAY FROM SPRINKLER HEADS

DO NOT install the sensor where it will be sprayed by a sprinkler system. This may force water inside the sensor.

LOCATE AWAY FROM WIND & RAIN OBSTRUCTIONS

DO NOT mount the sensor with obstructions around it. Consider a location that is a wide open area, with few structures around to ensure accurate wind measurement.

AcuRite Iris Sensor Installation Guidelines

INSTALLATION HEIGHT Mount the sensor at a minimum height of 5 feet (1.5 meters) off the ground, in an open area. Higher is better for wind measurements – the National Weather Service recommends 33 feet (10 meters) high!

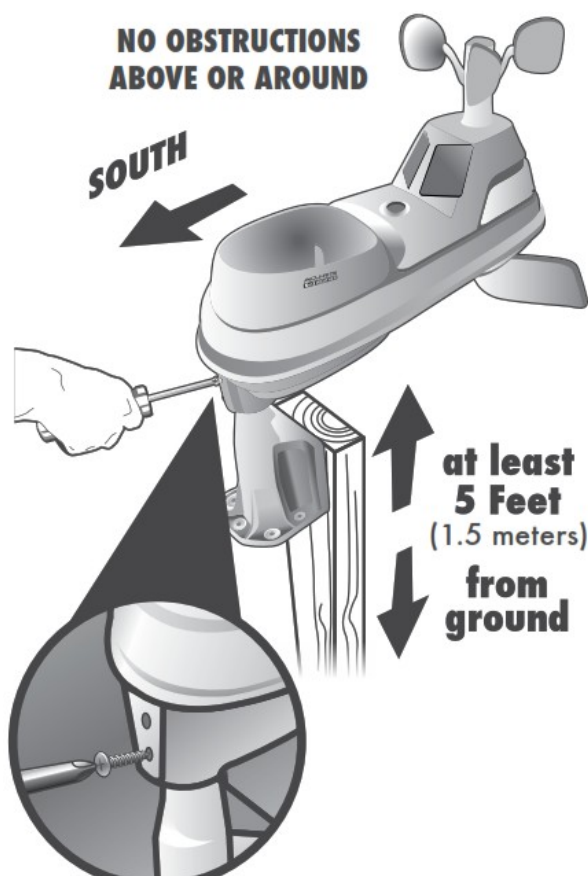
MOUNTING OPTIONS The included mounting bracket is designed to screw directly onto wooden posts or surfaces that are 2"x 4" or larger. The sensor can also be mounted directly to 3/4" steel pipe (available at hardware stores and home centers).

SOLAR CELL INSTALLATION Install the sensor with the solar cell facing SOUTH. This ensures the cell receives as much sun as possible and orients wind direction.

AcuRite Iris Sensor Installation

1. Fasten mounting base (included) to a post or pole (not included) using the 4 longer screws included in the hardware bag.
2. Insert the mounting base into the hole on the bottom of the sensor.
3. Make sure the arrows on the top of the sensor are pointed in the proper direction and the bubble level is centered. The solar cell should be facing south to properly orient the wind direction.
4. Fasten the sensor into the mounting base using the 2 shorter screws included in the hardware bag.

The AcuRite Iris sensor is now ready to use.



Basic Setup is Complete

The AcuRite Iris sensor will now synchronize with the display. It may take a few minutes for synchronization to complete. If both or one of the units appear to be functioning improperly, please refer to the troubleshooting section.

Calibrate the Rain Gauge

The rain gauge on the AcuRite Iris sensor can be calibrated to improve accuracy.

Items Needed: AcuRite Iris sensor, companion unit, plastic cup, pin, screw driver

1. First, ensure AcuRite Iris sensor is perfectly level using built-in bubble level.
2. Use compatible companion unit or AcuRite software to monitor during calibration.
3. Make a pin hole in the bottom of a plastic cup. Hold the cup over the rain gauge and fill it with exactly 1 cup (8oz) of water, allowing the water to drip into the rain gauge. You should hear the internal buckets tip and see water drain through the rain gauge.
4. A few seconds after each bucket tip, the companion unit displays rainfall in approximately 0.01" or more increments.
5. The cup of water should take more than 20 minutes to empty; a quicker period will result in inaccurate calibration. Try to simulate a normal steady rainfall. When cup is empty of water, companion unit should register 1.06"

Tips

- There should be nearly an equal number of water drops (about 25 water drops) between bucket tips. If not,

adjust the calibration screws on the bottom of the AcuRite Iris sensor until an equal number of water drops are tipping the buckets.

Adjustment

If the rain gauge doesn't register close to 1.06", make an EQUAL adjustment to the two calibration screws on the bottom of the AcuRite Iris sensor. Turning screws clockwise increases rainfall; counter clockwise decreases rainfall.

- To adjust the rainfall reading by 2% turn both screws 1/8 of a turn.
- To adjust the rainfall reading by 4% turn both screws 1/4 of a turn.
- To adjust the rainfall reading by 8% turn both screws 1/2 of a turn.

Specifications

TEMPERATURE RANGE	Outdoor: -40°F to 158°F; -40°C to 70°C
HUMIDITY RANGE	Outdoor: 1% to 99%
WIND SPEED	0 to 99 mph; 0 to 159 kph; 0 to 86 knots
WIND DIRECTION INDICATORS	16 points
RAINFALL	0.01 inches (0.25 mm) and up
WIRELESS RANGE	330 ft / 100 m depending on home construction materials
OPERATING FREQUENCY	433 MHz
POWER	4 x AA alkaline or lithium batteries
DATA REPORTING	Wind Speed: 18 second updates; Direction: 30 second updates Outdoor temperature & humidity: 36 second updates

FCC Information

This device complies with part 15 of FCC rules. Operation is subject to the following two conditions:

- 1- This device may NOT cause harmful interference, and
- 2- This device must accept any interference received, including interference that may cause undesired operation.

WARNING: Changes or modifications to this unit not expressly approved by the party responsible for compliance could void the user's authority to operate the equipment.

NOTE: This equipment has been tested and found to comply with the limits for a Class B digital device, pursuant to Part 15 of the FCC rules. These limits are designed to provide reasonable protection against harmful interference in a residential installation. This equipment generates, uses and can radiate radio frequency energy and, if not installed and used in accordance with the instructions, may cause harmful interference to radio communications. However, there is no guarantee that interference will not occur in a particular installation. If this equipment does cause harmful interference to radio or television reception, which can be determined by turning the equipment off and on, the user is encouraged to try to correct the interference by one or more of the following measures:

- Reorient or relocate the receiving antenna.
- Increase the separation between the equipment and the receiver.
- Connect the equipment into an outlet on a circuit different from that to which the receiver is connected.
- Consult the dealer or an experienced radio/TV technician for help.

NOTE: The manufacturer is not responsible for any radio or TV interference caused by unauthorized modifications to this equipment. Such modifications could void the user authority to operate the equipment. This device complies with Industry Canada licence-exempt RSS standard(s).

Operation is subject to the following two conditions:

- (1) This device may not cause interference, and
- (2) This device must accept any interference received, including interference that may cause undesired operation of the device.

Customer Support

AcuRite customer support is committed to providing you with best-in-class service. For assistance, please have the model number of this product available and contact us in any of the following ways:



Chat with our support team at www.acurite.com/support



Email us at support@chaney-inst.com

- Installation Videos
- Instruction Manuals
- Replacement Parts

IMPORTANT

PRODUCT MUST BE REGISTERED TO RECEIVE WARRANTY SERVICE

PRODUCT REGISTRATION

Register online to receive 1-year warranty protection

www.acurite.com/product-registration

Limited 1-Year Warranty

AcuRite is a wholly owned subsidiary of Chaney Instrument Company. For purchases of AcuRite products, AcuRite provides the benefits and services set forth herein.

For purchases of Chaney products, Chaney provides the benefits and services set forth herein. We warrant that all products we manufacture under this warranty are of good material and workmanship and, when properly installed and operated, will be free of defects for a period of one year from the date of purchase.

Any product which, under normal use and service, is proven to breach the warranty contained herein within ONE YEAR from date of sale will, upon examination by us, and at our sole option, be repaired or replaced by us. Transportation costs and charges for returned goods shall be paid for by the purchaser. We hereby disclaim all responsibility for such transportation costs and charges.

This warranty will not be breached, and we will give no credit for products which have received normal wear and tear not affecting the functionality of the product, been damaged (including by acts of nature), tampered, abused, improperly installed, or repaired or altered by others than our authorized representatives.

Remedy for breach of this warranty is limited to repair or replacement of the defective item(s). If we determine that repair or replacement is not feasible, we may, at our option, refund the amount of the original purchase price.

THE ABOVE-DESCRIBED WARRANTY IS THE SOLE WARRANTY FOR THE PRODUCTS AND IS EXPRESSLY IN LIEU OF ALL OTHER WARRANTIES, EXPRESS OR IMPLIED. ALL OTHER WARRANTIES OTHER THAN THE EXPRESS WARRANTY SET FORTH HEREIN ARE HEREBY EXPRESSLY DISCLAIMED, INCLUDING WITHOUT LIMITATION THE IMPLIED WARRANTY OF MERCHANTABILITY AND THE IMPLIED WARRANTY OF FITNESS FOR A PARTICULAR PURPOSE.

We expressly disclaim all liability for special, consequential, or incidental damages, whether arising in tort or by contract from any breach of this warranty. Some states do not allow the exclusion or limitation of incidental or consequential damages, so the above limitation or exclusion may not apply to you.

We further disclaim liability from personal injury relating to its products to the extent permitted by law. By

acceptance of any of our products, the purchaser assumes all liability for the consequences arising from their use or misuse. No person, firm or corporation is authorized to bind us to any other obligation or liability in connection with the sale of our products. Furthermore, no person, firm or corporation is authorized to modify or waive the terms of this warranty unless done in writing and signed by a duly authorized agent of ours.

In no case shall our liability for any claim relating to our products, your purchase or your use thereof, exceed the original purchase price paid for the product.

Applicability of Policy

This Return, Refund, and Warranty Policy applies only to purchases made in the United States and Canada. For purchases made in a country other than the United States or Canada, please consult the policies applicable to the country in which you made your purchase. Additionally, this Policy applies only to the original purchaser of our products. We do cannot and do not offer any return, refund, or warranty services if you buy products used or from resale sites such as eBay or Craigslist.

Governing Law

This Return, Refund, and Warranty Policy is governed by the laws of the United States and the State of Wisconsin. Any dispute relating to this Policy shall be brought exclusively in the federal or State courts having jurisdiction in Walworth County, Wisconsin; and purchaser consents to jurisdiction within the State of Wisconsin.

Instruction Manual AcuRite Iris® Mini Display model 06106



Questions? We're here to help!

Visit us online at www.acurite.com/support

Congratulations on your new AcuRite product! To ensure the best possible product performance, please read this manual in its entirety and retain it for future reference.

Unpacking Instructions

Remove the protective film that is applied to the LCD screen prior to using this product. Locate the tab and peel off to remove.

Package Contents

1. Display with Tabletop Stand
2. Instruction Manual

This product requires an AcuRite Iris® Weather Sensor to be operational (sold separately).

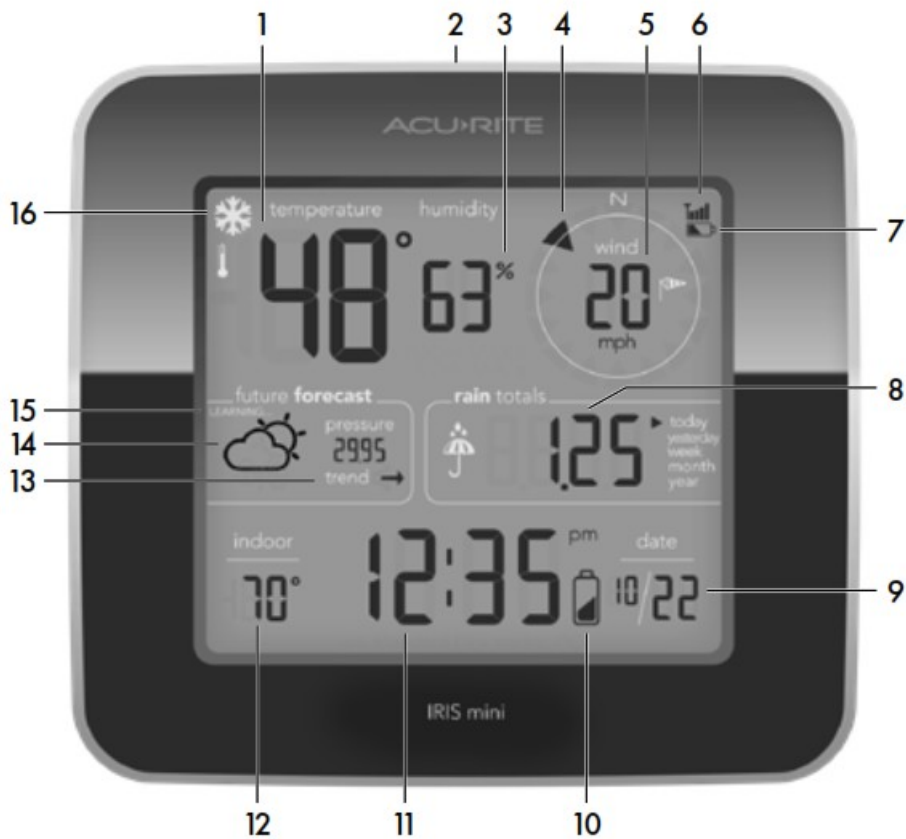
IMPORTANT PRODUCT MUST BE REGISTERED TO RECEIVE WARRANTY SERVICE

PRODUCT REGISTRATION

Register online to receive 1-year warranty protection
www.acurite.com/product-registration

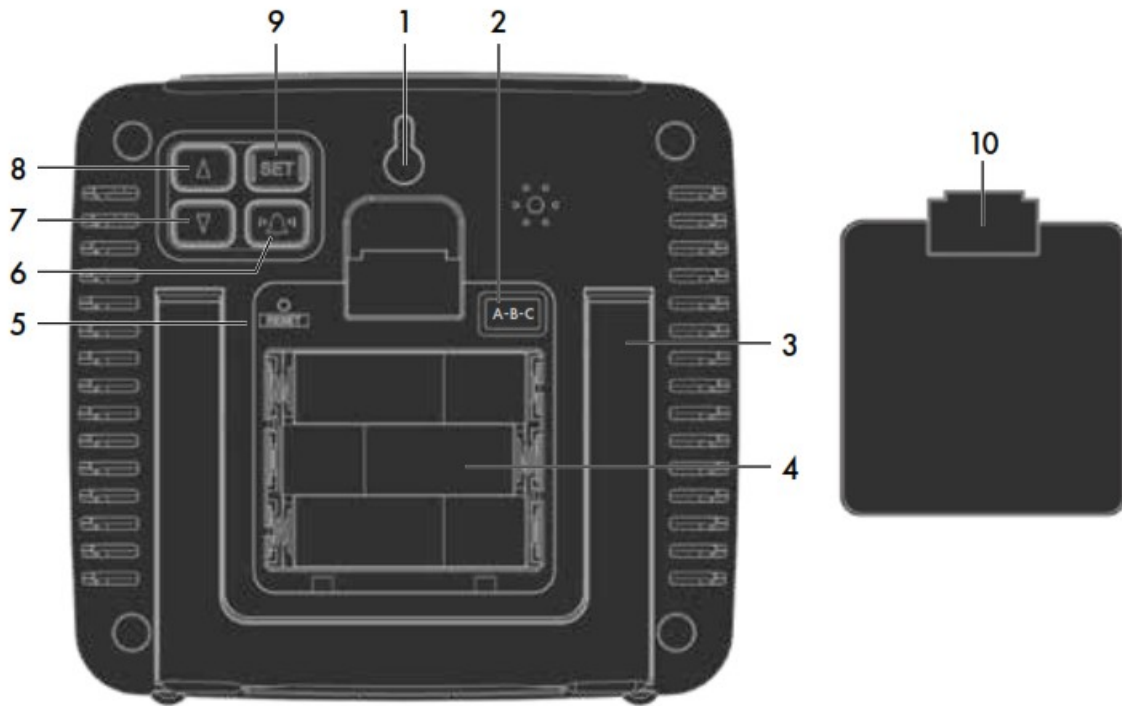
Features & Benefits

Front of Display



<div>1. Current Outdoor Temperature</div> <div>2. Records Button Press to cycle through available daily and all-time records.</div> <div>3. Current Outdoor Humidity</div> <div>4. Current Wind Direction</div> <div>5. Current Wind Speed</div> <div>6. Outdoor Sensor Signal Strength</div> <div>7. Outdoor Sensor Low Battery Indicator</div> <div>8. Current Rainfall Total</div> <div>9. Date</div> <div>10. Display Low Battery Indicator</div> <div>11. Time</div>	<div>12. Current Ir</div> <div>13. Current B</div> <div>14. Weather I Self-calibratir personalized</div> <div>15. Learning Disappears a</div> <div>16. Freeze Al</div>
---	--

Back of Display



- | | |
|--|--|
| <p>1. Integrated Hanger
For easy wall mounting.</p> <p>2. A-B-C Switch
ID code that must match sensor's A-B-C switch to ensure units synchronize.</p> <p>3. Display Stand</p> <p>4. Battery Compartment</p> <p>5. RESET Button
Press and release to clear historical record.
Press and hold for 10 seconds for full reset to factory defaults.</p> | <p>6. "🔔" Alarm
To enter alarm mode.</p> <p>7. ▼ Button
For setup page.</p> <p>8. ▲ Button
For setup page.</p> <p>9. SET Button
For setup page.</p> <p>10. Battery</p> |
|--|--|

SETUP

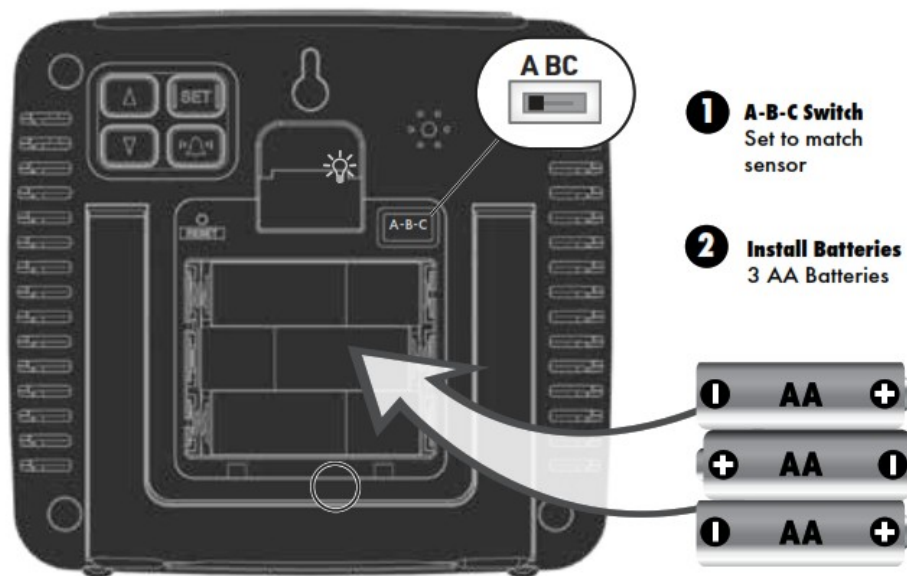
Display Setup

1. Set the A-B-C Switch

Locate the A-B-C switch inside the battery compartment. Set the A-B-C switch to A, B or C. You must select the same letter choices for both the display and the sensor in order for the units to synchronize.

2. Install or Replace Batteries

1. Remove the battery compartment cover.
2. Insert 3 x AA batteries (not included) into the battery compartment, as shown. Follow the polarity (+/-) diagram in the battery compartment.
3. Replace the battery cover.



PLEASE DISPOSE OF OLD OR DEFECTIVE BATTERIES IN AN ENVIRONMENTALLY SAFE WAY AND IN ACCORDANCE WITH YOUR LOCAL LAWS AND REGULATIONS.

BATTERY SAFETY: Clean the battery contacts and also those of the device prior to battery installation. Remove batteries from equipment which is not to be used for an extended period of time. Follow the polarity (+/-) diagram in the battery compartment. Promptly remove dead batteries from the device. Dispose of used batteries properly. Only batteries of the same or equivalent type as recommended are to be used. DO NOT incinerate used batteries. DO NOT dispose of batteries in fire, as batteries may explode or leak. DO NOT mix old and new batteries or types of batteries (alkaline/standard). DO NOT use rechargeable batteries. DO NOT recharge non-rechargeable batteries. DO NOT short-circuit the supply terminals.

Set the Time, Date & Units

Press and release the “SET” button, located on the back of the display, to enter SET MODE.

Once in set mode, the preference you are currently setting will blink on the display.

To adjust the currently selected (flashing) item, press and release the “▲” or “▼” buttons (press and HOLD to fast adjust).

To save your adjustments, press and release the “SET” button again to adjust the next preference. The preference set order is as follows:

CLOCK HOUR
CLOCK MINUTE
CALENDAR MONTH
CALENDAR DATE
CALENDAR YEAR
UNITS SCALE (U.S. standard or metric)

- U.S. Standard: Temperature (F), Wind speed (mph), Rainfall (inches), Pressure (inHg)
- Metric: Temperature (C), Wind speed (km/h), Rainfall (mm), Pressure (haps)

You will automatically exit SET MODE if no buttons are pressed for 10 seconds. Enter SET MODE at any time by pressing the “SET” button.

Placement for Maximum Accuracy

AcuRite sensors are sensitive to surrounding environmental conditions. Proper placement of both the display and the outdoor sensor are critical to the accuracy and performance of this product.

Display Placement

Place the display in a dry area free of dirt and dust. Display stands upright for tabletop use or is wall-mountable.

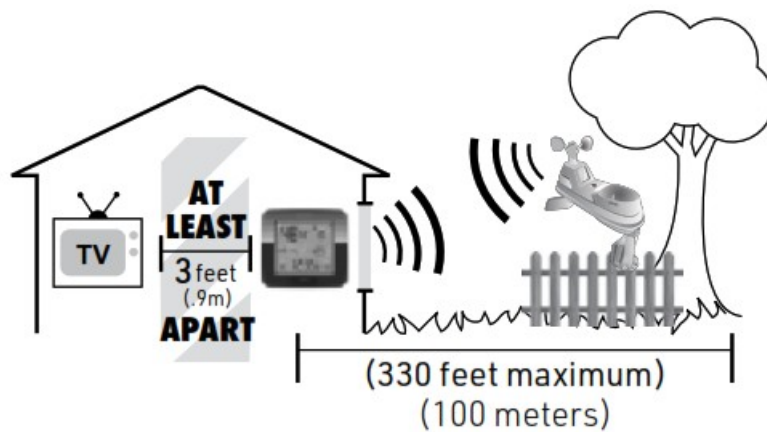
Outdoor Device Placement

For optimal performance and the most accurate readings, follow the instructions included with the AcuRite Iris® (5-in-1).



Important Placement Guidelines

- To ensure accurate temperature measurement, place units out of direct sunlight and away from any heat sources or vents. AT LEAST
- Display and outdoor sensor must be within 330 ft (100 m) of each other. TV 3feet (.9m) APART
- To maximize wireless range, place units away from large metallic items, thick walls, metal surfaces, or other objects that may limit wireless communication. (330 feet maximum)
(100 meters)
- To prevent wireless interference, place both units at least 3 ft (90 cm) away from electronic devices (TV, computer, microwave, radio, etc.).



Setup is Complete

The sensor will now synchronize with the display. It may take a few minutes for synchronization to complete. Please refer to the troubleshooting section of this manual if anything appears to be functioning improperly.

OPERATION

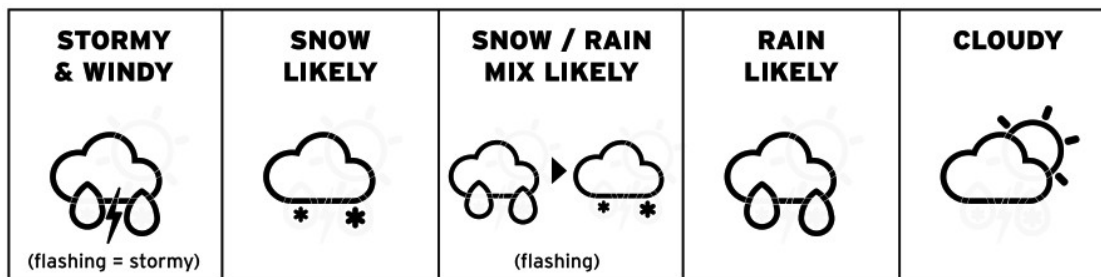
Using the AcuRite Iris® Mini Display

Learning Mode

Self-calibrating forecasting uses a unique algorithm to analyze changes in pressure over a time period (called Learning Mode) to determine your altitude. After 14 days, the Learning Mode icon disappears from the display screen. At this point, the self-calibrated pressure is tuned in to your location and the unit is ready for superior weather prediction.

Weather Forecast

Curate's patented self-calibrating forecasting provides your personal forecast of weather conditions for the next 12 to 24 hours by collecting data from the sensor in your backyard. It generates a forecast with pinpoint accuracy – personalized for your exact location.



Barometric Pressure

Subtle variations in barometric pressure greatly affect the weather. This weather station displays the current pressure with an arrow icon to indicate the direction the pressure is trending (FALLING, STEADY, or RISING).

Rainfall Tracking

This weather station features enhanced tracking of historical rainfall data. Rain accumulation data is recorded for today, yesterday, past week, past month, and past year.

While in normal operation mode, press and release the “ ” or “ ” buttons to cycle through historical rainfall records.

High & Low Records

Today's high and low records are displayed for indoor temperature and outdoor temperature and humidity.. Today's records automatically clear at 12:00 am midnight every day.

Press the “RECORDS” button to cycle through high and low recorded values for outdoor temperature, humidity, and wind speed maximum for today and all-time.

Programmable Alarms

This display features programmable alarms that sound an alert to notify you when a value (for outdoor temperature, humidity, wind speed or rainfall) has been reached or exceeded. When an alarm is triggered, the display emits an audible beep and flashes data in the affected category. You can customize the alarms by turning ON or OFF the alarms you'd like activated or deactivated, and by inputting your own values to trigger the alarm.

Setup an Alarm

1. Press and release the “🔔” button until the reading for which you wish to set an alarm is shown on the display. “🔔” will be shown.
2. Press and release the “▼” or “▲” buttons until “🔔” appears.
3. Press and release the “SET” button. The current alarm value will flash on the display.
4. Press and release the “▼” or “▲” buttons to adjust the alarm's value.
5. Press and release the “🔔” button to save the alarm value.
6. Press and release the “🔔” button to cycle to the next reading.

Disable an Alarm

1. Press and release the “🔔” button until the reading for which you wish to disable an alarm is shown on the display. “🔔” will be shown.
2. Press and release the “▼” or “▲” buttons until “🔔” appears.
3. Press and release the “🔔” button to cycle to the next reading.
4. Repeat steps 1-3, as needed.

NOTE: To disable ALL alarms at once, press and HOLD the “🔔” button for 10 seconds.

You will automatically exit alarm SET MODE if no buttons are pressed for 10 seconds. Enter alarm SET MODE at any time by pressing the “🔔” button.

Care & Maintenance

Display Care

Clean with a soft, damp cloth. Do not use caustic cleaners or abrasives. Keep away from dust, dirt and moisture. Clean ventilation ports regularly with a gentle puff of air.

Calibration

The outdoor temperature and humidity, indoor temperature, and barometric pressure can be calibrated on the display to improve accuracy. Calibration can improve accuracy when sensor placement or environmental factors impact the data accuracy.

- 1. To access calibration mode, press “▲”, “SET” and “▼” buttons simultaneously for at least 5 seconds.
- 2. To adjust the currently selected (flashing) item, press and release the “▲” or “▼” buttons to calibrate the data value higher or lower from the actual reading.
- 3. To save your adjustments, press and release the “SET” button to adjust the next preference. The “🔑” icon will remain illuminated next to calibrated values.

The preference set order is as follows:

OUTDOOR TEMPERATURE OUTDOOR HUMIDITY INDOOR TEMPERATURE	BAROMETRIC PRESSURE (must be set to MANUAL mode to calit
---	---

*To change from AUTO to MANUAL pressure mode and vice versa, press AND HOLD the “SET” button for at least 10 seconds. The display indicates the current pressure mode selected, “AUTO” or “MANUAL”. After 20 seconds of inactivity, the display will save the adjustments and exit calibration mode.
NOTE: Calibrations will be erased if the display is reset or if batteries are removed.

Troubleshooting

Problem	Possible Solution
No outdoor sensor reception no bars	<p>If the wireless signal indicator shows no bars:</p> <ul style="list-style-type: none"> • Relocate the display and/or the outdoor sensor. The units must be within 330 ft (100 m) of each other. • Make sure both units are placed at least 3 feet (.9 m) away from electronics that may interfere with the wireless communication (such as TVs, microwaves, computers, etc.). • Use standard alkaline batteries (or lithium batteries in sensor when temperature is below -4°F/-20°C). Do not use heavy-duty or rechargeable batteries. <p>NOTE: It may take a few minutes for display and sensor to synchronize after batteries are replaced.</p>
Outdoor temperature is flashing or showing dashes	<p>Flashing of the outdoor temperature is generally an indication of wireless interference.</p> <ol style="list-style-type: none"> 1. Bring both the sensor and display indoors and remove batteries from each. 2. Make sure the A-B-C switches on both units match. 3. Reinstall batteries in the outdoor sensor. 4. Reinstall batteries in the display. 5. Let the units sit within a couple feet of each other for a few minutes to gain a strong connection.
Inaccurate forecast	<ul style="list-style-type: none"> • Weather Forecast icon predicts conditions for the next 12 to 24 hours, not current conditions. • Has Learning Mode icon disappeared from the display? Learning Mode must complete before forecast and pressure will be accurate. • Allow unit to run continuously for 33 days. Battery removal or resetting the display will restart Learning Mode. After 14 days, forecast should be fairly accurate, however Learning Mode calibrates for a total of 33 days.
Inaccurate temperature or humidity	<ul style="list-style-type: none"> • Make sure both the display and sensor are placed out of direct sunlight and away from any heat sources or vents (see page 6). • Make sure both units are positioned away from moisture sources (see page 6).
No rainfall	<ul style="list-style-type: none"> • Check to ensure the rain gauge stabilizer (plastic tab) has been removed from the bottom of the sensor. • Clear debris, such as leaves, out of the rain collector funnel and debris screen. • Calibrate the rain gauge (see separate AcuRite Iris® sensor manual). • Verify the sensor's internal tipping lever is moving freely by dripping a little water through the rain collector. You should hear the lever tipping. If you do not hear it, you may need to clean inside the sensor.
Inaccurate wind readings	<ul style="list-style-type: none"> • What is wind reading being compared to? Pro weather stations are typically mounted at 30 ft high or more. Make sure to compare data using a sensor positioned at the same mounting height. • Check location of the sensor. Ensure it's mounted a minimum of 5 ft in the air with no obstructions around it (within several feet). • Ensure wind cups are spinning freely. If they hesitate or stop try lubricating with graphite powder or spray lubricant.
Display screen not working	<ul style="list-style-type: none"> • Check that the batteries are installed correctly. Batteries may need to be replaced. • Reset the display by pressing and holding the RESET button, located in the battery compartment of the display. Date and time will need to be entered after a reset.

If your AcuRite product does not operate properly after trying the troubleshooting steps, visit www.acurite.com/support

Specifications

TEMPERATURE RANGE	Outdoor: -40 F to 158 F; -40°C to 70 C
	Indoor 32 F to 122 F; 0 C to 50°C
OUTDOOR HUMIDITY RANGE	1 % to 99 %
WIND SPEED	0 to 99 mph; 0 to 159 kph
WIND DIRECTION INDICATIONS	16 points
RAINFALL	0.01 inches (0.25 mm) and up
WIRELESS RANGE	330 ft/ 100 m depending on home construction materials
OPERATING FREQUENCY	433 MHz
POWER	3 x AA alkaline batteries (required)
DATA REPORTING	Wind Speed: 18 second updates
	Direction: 36 seconds
	Outdoor temperature & humidity: 36 second updates
	Indoor temperature & humidity: 60 second updates

Customer Support

AcuRite customer support is committed to providing you with best-in-class service. For assistance, please have the model number of this product available and visit acurite.com/support.

- Installation Videos
- Register your Product
- Instruction Manuals
- Replacement Parts
- Submit Feedback & Ideas

IMPORTANT

PRODUCT MUST BE REGISTERED TO RECEIVE WARRANTY SERVICE

PRODUCT REGISTRATION

Register online to receive 1-year warranty protection www.acurite.com/product-registration

Limited 1-Year Warranty

AcuRite is a wholly owned subsidiary of Chaney Instrument Company. For purchases of AcuRite products, AcuRite provides the benefits and services set forth herein.

For purchases of Chaney products, Chaney provides the benefits and services set forth herein. We warrant that all products we manufacture under this warranty are of good material and workmanship and, when properly installed and operated, will be free of defects for a period of one year from the date of purchase. Any product which, under normal use and service, is proven to breach the warranty contained herein within ONE YEAR from date of sale will, upon examination by us, and at our sole option, be repaired or replaced by us. Transportation costs and charges for returned goods shall be paid for by the purchaser. We hereby disclaim all responsibility for such transportation costs and charges.

This warranty will not be breached, and we will give no credit for products which have received normal wear and tear not affecting the functionality of the product, been damaged (including by acts of nature), tampered, abused, improperly installed, or repaired or altered by others than our authorized representatives.

Remedy for breach of this warranty is limited to repair or replacement of the defective item(s). If we determine that repair or replacement is not feasible, we may, at our option, refund the amount of the original purchase price.

THE ABOVE-DESCRIBED WARRANTY IS THE SOLE WARRANTY FOR THE PRODUCTS AND IS EXPRESSLY

IN LIEU OF ALL OTHER WARRANTIES, EXPRESS OR IMPLIED. ALL OTHER WARRANTIES OTHER THAN THE EXPRESS WARRANTY SET FORTH HEREIN ARE HEREBY EXPRESSLY DISCLAIMED, INCLUDING WITHOUT LIMITATION THE IMPLIED WARRANTY OF MERCHANTABILITY AND THE IMPLIED WARRANTY OF FITNESS FOR A PARTICULAR PURPOSE.

We expressly disclaim all liability for special, consequential, or incidental damages, whether arising in tort or by contract from any breach of this warranty. Some states do not allow the exclusion or limitation of incidental or consequential damages, so the above limitation or exclusion may not apply to you.

We further disclaim liability from personal injury relating to its products to the extent permitted by law. By acceptance of any of our products, the purchaser assumes all liability for the consequences arising from their use or misuse. No person, firm or corporation is authorized to bind us to any other obligation or liability in connection with the sale of our products. Furthermore, no person, firm or corporation is authorized to modify or waive the terms of this warranty unless done in writing and signed by a duly authorized agent of ours.

In no case shall our liability for any claim relating to our products, your purchase or your use thereof, exceed the original purchase price paid for the product.

Applicability of Policy

This Return, Refund, and Warranty Policy applies only to purchases made in the United States and Canada. For purchases made in a country other than the United States or Canada, please consult the policies applicable to the country in which you made your purchase. Additionally, this Policy applies only to the original purchaser of our products. We do not and do not offer any return, refund, or warranty services if you buy products used or from resale sites such as eBay or Craigslist.

Governing Law

This Return, Refund, and Warranty Policy is governed by the laws of the United States and the State of Wisconsin. Any dispute relating to this Policy shall be brought exclusively in the federal or State courts having jurisdiction in Walworth County, Wisconsin; and purchaser consents to jurisdiction within the State of Wisconsin.

FCC Information

This device complies with part 15 of FCC rules. Operation is subject to the following two conditions:

1. This device may NOT cause harmful interference, and
2. This device must accept any interference received, including interference that may cause undesired operation.

WARNING: Changes or modifications to this unit not expressly approved by the party responsible for compliance could void the user's authority to operate the equipment.

NOTE: This equipment has been tested and found to comply with the limits for a Class B digital device, pursuant to Part 15 of the FCC rules. These limits are designed to provide reasonable protection against harmful interference in a residential installation. This equipment generates, uses and can radiate radio frequency energy and, if not installed and used in accordance with the instructions, may cause harmful interference to radio communications.

However, there is no guarantee that interference will not occur in a particular installation. If this equipment does cause harmful interference to radio or television reception, which can be determined by turning the equipment off and on, the user is encouraged to try to correct the interference by one or more of the following measures:

- Reorient or relocate the receiving antenna.
- Increase the separation between the equipment and the receiver.
- Connect the equipment into an outlet on a circuit different from that to which the receiver is connected.
- Consult the dealer or an experienced radio/TV technician for help.

NOTE: The manufacturer is not responsible for any radio or TV interference caused by unauthorized modifications to this equipment. Such modifications could void the user authority to operate the equipment.

This device complies with Industry Canada licence-exempt RSS standard(s).

Operation is subject to the following two conditions:

- (1) This device may not cause interference, and
- (2) This device must accept any interference received, including interference that may cause undesired operation of the device.




www.AcuRite.com

© Chaney Instrument Co. All rights reserved. AcuRite is a registered trademark of the Chaney Instrument Co., Lake Geneva, WI 53147. All other trademarks and copyrights are the property of their respective owners. AcuRite uses patented technology. Visit www.acurite.com/patents for details.

Printed in China
06106 INST 052422

Documents / Resources

 <p>ACURITE Instruction Manual AcuRite Iris® (5-in-1) Weather Station (Small Solar Panel) Model 06014</p> <p>Package Contents: 1. AcuRite Iris Weather Station 2. Weather Station 3. Weather Station 4. Weather Station 5. Weather Station</p> <p>IMPORTANT Please read this manual carefully before using the product. For more information, visit www.acurite.com/support Questions? Visit www.acurite.com/support</p>	<p>ACURITE 06014 Iris Weather Station with Mini Wireless Display [pdf] Instruction Manual 06014 Iris Weather Station with Mini Wireless Display, 06014, Iris Weather Station with Mini Wireless Display, Mini Wireless Display, Wireless Display</p>
--	--

References

- [Customer Support & FAQs | AcuRite Weather Monitoring](#)
- [Home -](#)
- [AcuRite Weather Monitoring | #1 Weather Station Brand in North America](#)
- [Patented Technology | AcuRite](#)
- [Customer Support & FAQs | AcuRite Weather Monitoring](#)