



AcuRite 00891A Thermometer with Probe Instruction Manual

[Home](#) » [Acurite](#) » AcuRite 00891A Thermometer with Probe Instruction Manual 

ACU RITE®

Instruction Manual
Thermometer with Probe
model 00891A



Questions? Contact Customer Support at (877) 221-1252 or visit www.AcuRite.com.

Contents

- 1 **SAVE THIS MANUAL FOR FUTURE REFERENCE.**
- 2 **Unpacking Instructions**
- 3 **Package Contents**
- 4 **Features & Benefits**
- 5 **FRONT**
- 6 **SETUP**
 - 6.1 **Install or Replace Battery**
- 7 **OPERATION**
- 8 **Troubleshooting**
- 9 **Specifications**
- 10 **FCC Information**
- 11 **Customer Support**
- 12 **Limited One Year Warranty**
- 13 **Documents / Resources**
 - 13.1 **References**
- 14 **Related Posts**

SAVE THIS MANUAL FOR FUTURE REFERENCE.

Congratulations on your new AcuRite product. To ensure the best possible product performance, please read this manual in its entirety and retain it for future reference.

Unpacking Instructions

Remove the protective film that is applied to the LCD screen prior to using this product. Locate the tab and peel it off to remove it.

Package Contents

1. Display unit
2. Probe Temperature Sensor
3. Instruction Manual

IMPORTANT

PRODUCT MUST BE REGISTERED
TO RECEIVE WARRANTY SERVICE

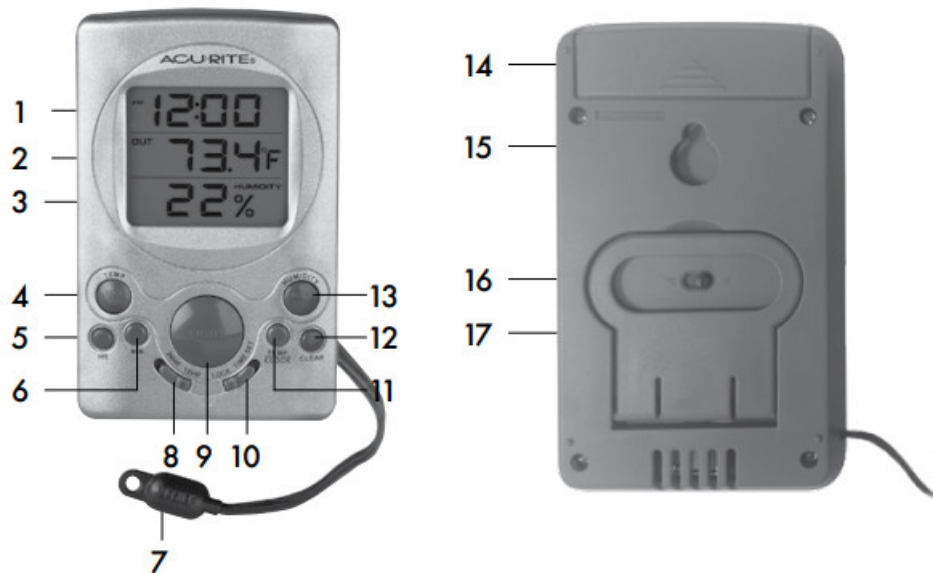
PRODUCT REGISTRATION
Register online
to receive 1 year
warranty protection
www.AcuRite.com

GO NOW

SUPPORT

- Support Forum
- Archived Products
- ▶ Register a Product

Features & Benefits



FRONT

1. **Current Time/Indoor Temperature**
Displays current time or current indoor (display) temperature.
2. **Current Temperature**
Displays current outdoor (probe) temperature.
3. **Current Indoor Humidity**
4. **MAX/MIN TEMP Button**
Displays high & low records.
5. **HR Button**
Setup hours.
6. **MIN Button**
Setup minutes.
7. **Probe Temperature Sensor**
8. **24HR / 12HR Switch**
Slide to change between 12-hour and 24-hour clock (#1).
9. **Momentary Backlight Button**
10. **LOCK/TIME SET Switch**
Slide to lock clock settings or set time.
11. **TEMP/CLOCK Button**
Toggle between current time or current indoor (display) temperature (#1).
12. **CLEAR Button**
Press to clear high & low records.
13. **MAX/MIN HUMIDITY Button**
Displays high & low records.

BACK

14. **Battery Compartment**

15. **Integrated Hang Hole for easy placement.**

16. **°F/°C Switch**

Slide to select °F or °C temperature units.

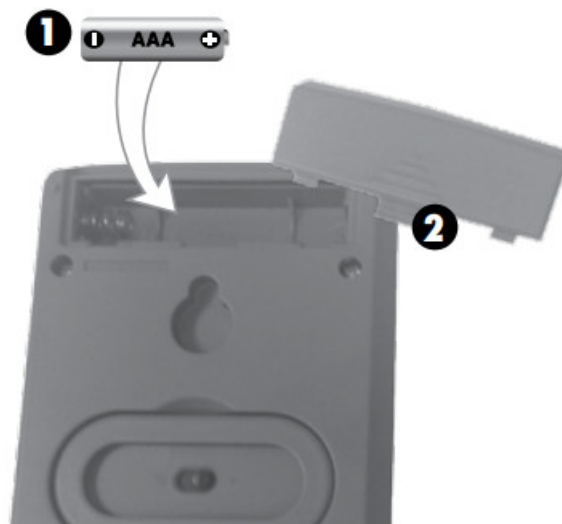
17. **Fold-out Tabletop Stand**

SETUP

Install or Replace Battery

AcuRite recommends high-quality alkaline batteries for the best product performance. Heavy duty or rechargeable batteries are not recommended.

1. Slide the battery compartment cover open and install 1 fresh “AAA” battery. Follow the polarity (+/-) diagram in the battery compartment.
2. Replace battery cover.



Select Temperature Units

To select between degrees Fahrenheit (°F) or Celsius (°C) temperature units, slide the “°F/ °C” switch located on the back of the display.

Set the Time

To set the time, slide the “LOCK/TIME SET” switch to “TIME SET”. The time will now blink. Adjust the hours by pressing the “HR” button. Adjust the minutes by pressing the “MIN” button. When you have reached the desired time, slide the “LOCK/TIME SET” switch to “LOCK” to save time setting.

PLEASE DISPOSE OF OLD OR DEFECTIVE BATTERIES IN AN ENVIRONMENTALLY SAFE WAY AND IN ACCORDANCE WITH YOUR LOCAL LAWS AND REGULATIONS.

BATTERY SAFETY: Clean the battery contacts and also those of the device prior to battery installation. Remove batteries from equipment that is not to be used for an extended period of time. Follow the polarity (+/-) diagram in the battery compartment. Promptly remove dead batteries from the device. Dispose of used batteries properly. Only batteries of the same or equivalent type as recommended are to be used. **DO NOT** incinerate used batteries. **DO NOT** dispose of batteries in fire, as batteries may explode or leak. **DO NOT** mix old and new batteries or types of batteries (alkaline/standard). **DO NOT** use rechargeable batteries. **DO NOT** recharge non-rechargeable batteries. **DO NOT** short-circuit the supply terminals.

OPERATION

Placement for Maximum Accuracy

AcuRite sensors are sensitive to surrounding environmental conditions. Proper placement of both the display unit and temperature probe are critical to the accuracy and performance of this product.

Display Unit & Probe Placement

Place the display unit in a dry area free of dirt and dust. Display unit stands upright for tabletop use or is wall-mountable.

To observe outdoor temperatures, the wired temperature probe must be placed outside. The probe sensor can be securely mounted to a surface utilizing the adhesive pad or the integrated hang hole. Take care not to damage the sensor during mounting.

Important Placement Guidelines

- To ensure accurate temperature measurement, place units out of direct sunlight and away from heat sources or vents.
- The wired temperature probe is not waterproof and is not intended for permanent submersion in liquids. Submersion in liquid for more than 30 seconds may result in the complete failure of the probe.

High & Low Records

High and low values are recorded for display (indoor) and probe (outdoor) temperature and humidity. High and low records reflect the minimum and maximum temperature and humidity records in the last 24 hours. High and low records automatically reset at 12:00 am.

To view the HIGH and LOW indoor (display) temperature records, press and release the "TEMP MAX/MIN" button. The "MAX" and "MIN" icons appear on the display next to the high and low records. To view the HIGH and LOW outdoor (probe) temperature record, press and release the "TEMP MAX/MIN" button twice. The "MAX" and "MIN" icons appear on the display next to the high and low records.

To view the HIGH indoor (display) humidity record, press and release the "HUMIDITY MAX/MIN" button. The "MAX" icon appears on the display next to the high record.

To view the LOW indoor (display) humidity record, press and release the "HUMIDITY MAX/MIN" button twice. The "MIN" icon appears on the display next to the low record.

To reset the HIGH and LOW records, press the "CLEAR" button while viewing the high and low records you wish to clear. Dashes will display to confirm the values have been cleared.

Troubleshooting

Inaccurate temperature	<ul style="list-style-type: none">• Make sure both the display unit and sensor are placed out of direct sunlight and away from any heat sources or vents.
Display screen not working	<ul style="list-style-type: none">• Check that the batteries are installed correctly. Batteries may need to be replaced.

Specifications

TEMPERATURE RANGE	Display: 32°F to 122°F; 0°C to 50°C Probe: -58°F to 158°F; -50°C to 70°C
HUMIDITY RANGE	Display: 16% – 98% RH (relative humidity)
POWER	1 x AAA alkaline battery

FCC Information

This device complies with part 15 of FCC rules. Operation is subject to the following two conditions:

1. This device may NOT cause harmful interference, and
2. This device must accept any interference received, including interference that may cause undesired operation.

WARNING: Changes or modifications to this unit not expressly approved by the party responsible for compliance could void the user's authority to operate the equipment.

NOTE: This equipment has been tested and found to comply with the limits for a Class B digital device, pursuant to Part 15 of the FCC rules. These limits are designed to provide reasonable protection against harmful interference in a residential installation. This equipment generates, uses, and can radiate radio frequency energy and, if not installed and used in accordance with the instructions, may cause harmful interference to radio communications. However, there is no guarantee that interference will not occur in a particular installation.

NOTE: The manufacturer is not responsible for any radio or TV interference caused by unauthorized modifications to this equipment. Such modifications could void the user's authority to operate the equipment. This device complies with Industry Canada licence-exempt RSS standard(s).

Customer Support

AcuRite customer support is committed to providing you with best-in-class service. For assistance, please have the model number of this product available and contact us in any of the following ways:



(877) 221-1252



info@chaney-inst.com

24/7 support at www.AcuRite.com

- Installation Videos
- Register your Product
- Instruction Manuals
- Support User Forum
- Replacement Parts
- Submit Feedback & Ideas

IMPORTANT		PRODUCT MUST BE REGISTERED TO RECEIVE WARRANTY SERVICE	
PRODUCT REGISTRATION Register online to receive 1 year warranty protection www.AcuRite.com		GO NOW	SUPPORT Support Forum Archived Products ► Register a Product

Limited One Year Warranty

At AcuRite, we proudly uphold our commitment to quality technology. Chaney Instrument Co. warrants that all products it manufactures be of good material and workmanship, and to be free of defects when properly installed and operated for a period of one year from the date of purchase.

We recommend that you visit us at www.AcuRite.com for the fastest way to register your product.

However, product registration does not eliminate the need to retain your original proof of purchase in order to obtain warranty benefits.

Chaney Instrument Co. warrants that all products it manufactures to be of good material and workmanship and to be free of defects when properly installed and operated for a period of one year from the date of purchase. Remedy for breach of this warranty is limited to repair or replacement of the defective item(s). Any product which, under normal use and service, is proven to breach the warranty contained herein within ONE YEAR from date of sale will, upon examination by Chaney, and at its sole option, be repaired or replaced by Chaney. Transportation costs and charges for returned goods shall be paid for by the purchaser.

Chaney hereby disclaims all responsibility for such transportation costs and charges. This warranty will not be breached, and Chaney will give no credit for products it manufactures which have received normal wear and tear, been damaged (including by acts of nature), tampered, abused, improperly installed, damaged in shipping, or repaired or altered by others than authorized representatives of Chaney.

The above-described warranty is expressly in lieu of all other warranties, express or implied, and all other warranties are hereby expressly disclaimed, including without limitation the implied warranty of merchantability and the implied warranty of fitness for a particular purpose. Chaney expressly disclaims all liability for special, consequential or incidental damages, whether arising in tort or by contract from any breach of this warranty. Some states do not allow the exclusion or limitation of incidental or consequential damages, so the above limitation or exclusion may not apply to you. Chaney further disclaims all liability from personal injury relating to its products to the extent permitted by law. By acceptance of any of Chaney's products, the purchaser assumes all liability for the consequences arising from their use or misuse. No person, firm or corporation is authorized to assume for Chaney any other liability in connection with the sale of its products. Furthermore, no person, firm or corporation is authorized to modify or waive the terms of this paragraph, and the preceding paragraph, unless done in writing and signed by a duly authorized agent of Chaney. This warranty gives you specific legal rights, and you may also have other rights which vary from state to state.

For in-warranty claims: Chaney Instrument Co.

965 Wells St., Lake Geneva, WI 53147

ACU RITE®



It's More than Accurate, it's

AcuRite offers an extensive assortment of precision instruments, designed to provide you with information you can depend on to Plan your day with confidence™.


www.AcuRite.com

Printed in China

00891A3 INST 073014

Lake Geneva, WI 53147. All other trademarks and copyrights are the property of their respective owners. AcuRite uses patented technology.
Visit www.AcuRite.com/patents for details.

Documents / Resources



ACU-RITE Instruction Manual
Thermometer with Probe
model 00891A

12.00
73.4
22.7

CONTENTS

Unboxing Instructions	2	Personal Weather Station	1
Package Contents	2	Installation	1
Power & Operation	3	Operation	1
Features & Controls	4	Custom Report	2
Setup	4	Memory	2
Temperature Unit	4		

Download! Custom Customer Support at 877.333.3333 or visit www.AcuRite.com

SAVE THIS MANUAL FOR FUTURE REFERENCE.

[AcuRite 00891A Thermometer with Probe](#) [pdf] Instruction Manual
00891A, Thermometer with Probe

References

- [Home -](#)
- [AcuRite Weather Monitoring | #1 Weather Station Brand in North America](#)
- [Patented Technology | AcuRite](#)