



ACURITE 00603 Digital Window Thermometer Instruction Manual

[Home](#) » [Acurite](#) » ACURITE 00603 Digital Window Thermometer Instruction Manual 

ACURITE 00603 Digital Window Thermometer



AT HOME
EN CASA



GOLFING
GOLF



ON BOAT
EN EL BOTE



IN CAR
EN EL CARRO

Thank You! We appreciate you for purchasing the Acu-rite Digital Window Thermometer. This instrument is designed and engineered with state-of-the-art technology and components. It will provide the current temperature and low and high temperature records for wherever it is placed.

This thermometer can be mounted and used in almost any location by utilizing the rotating suction cups. The suction cups rotate 270° from front to back, allowing the thermometer to adhere to any clean, flat surface.

Contents

1 CHECK PACKAGE CONTENTS

2 READ

3 ACTIVATE BATTERY

4 CHOOSE WHERE TO USE THE WINDOW THERMOMETER

5 HOME USE

6 DIGITAL WINDOW THERMOMETER FEATURES

7 Documents / Resources

7.1 References

8 Related Posts

CHECK PACKAGE CONTENTS

- (1) Digital window thermometer
- (1) Instruction manual

READ

Please read this entire manual carefully before you set up the thermometer and begin to use it. In this way you can become familiar with the features and get the most benefit from it.

ACTIVATE BATTERY

(1) CR2032 “coin-style” lithium battery is Included and pre-Installed.

A protective strip that prevents the battery from draining during shipping must be removed from the battery compartment before you can begin using your digital window thermometer.

- 1) Remove the two small Phillips type screws with a small Phillips screwdriver.
- 2) Remove the battery compartment carefully as to not loose the screws.
- 3) Remove the small plastic tab from the battery compartment.
- 4) Replace the battery compartment cover and screws, making sure the battery is still installed correctly.

NOTE: It is recommended that a lithium type battery always be used in the Digital Window Thermometer to ensure a long battery life and better cold weather operation than regular alkaline batteries.

CHOOSE WHERE TO USE THE WINDOW THERMOMETER

The Acu-Rite® digital window thermometer can be used almost anywhere a reliable temperature reading is needed. When choosing where to place the thermometer, keep the following in mind:

- When placing, clean the surface area where the suction cups will adhere to thoroughly. The suction cups will adhere to surfaces like glass or smooth plastic best.
- For the most accurate reading, place the thermometer in an area OUT OF DIRECT SUNLIGHT.
- The digital window thermometer is weather-resistant, but is not WATERPROOF. Place in an area out of direct weather elements, such as under an overhang or on a recessed or inset window surface when placing

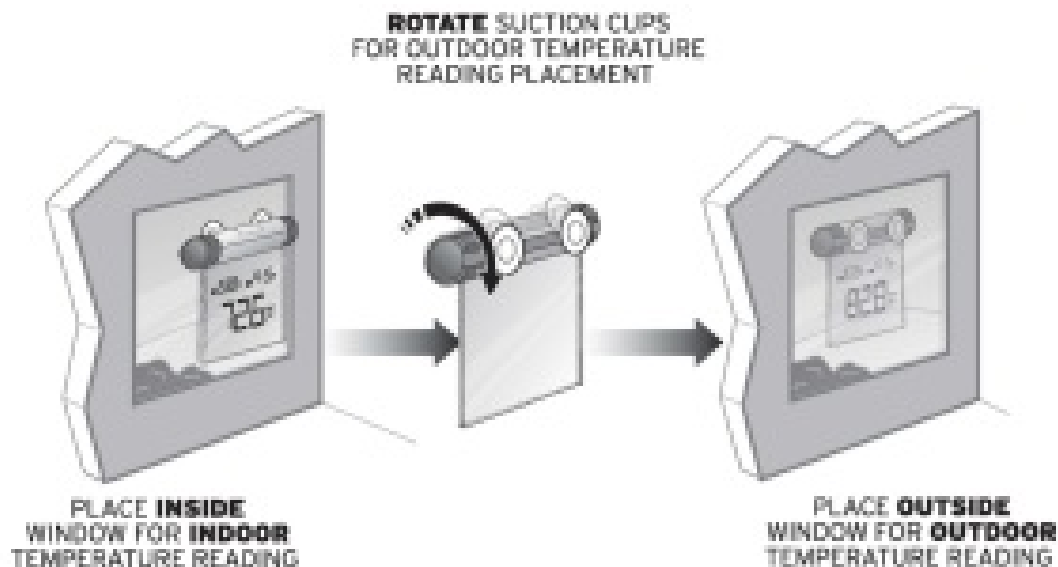
outdoors.

- In the case of very cold temperatures outdoors, the thermometers suction cups may become stiff and loose suction. It is recommended that the window thermometer be brought indoors in extremely cold weather to prevent the unit from falling.
- The suction cup mounting bracket rotates 270° to allow mounting placement on various angles of surfaces. The Digital Window Thermometer can be mounted on any SMOOTH FLAT SURFACE and used anywhere a temperature reading is needed, provided the previous mounting suggestions are followed.
- When removing the Digital Window Thermometer from a mounting surface, lift tab of suction cup itself. DO NOT pull on the case or the display to remove the thermometer from a mounting surface as this may cause damage to the rotating suction cup bracket.

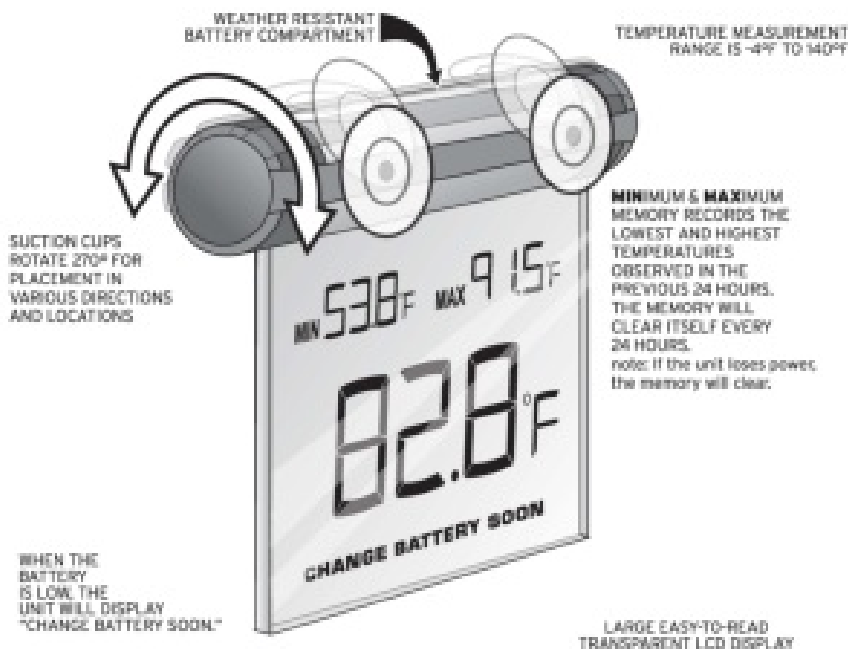
After you have decided where to place the unit, be sure the mounting surface is clean before mounting.

After the digital window thermometer is mounted, consider rotating the display SLIGHTLY down or up to provide the best viewing angle height for where the location the thermometer will be viewed most from.

HOME USE



DIGITAL WINDOW THERMOMETER FEATURES



If at any time in the future you need to dispose of this product please note that:
Waste electrical products should not be disposed together with household waste.
Please recycle where facilities exist. Check with your local Authority or retailer for recycling advice.



PLEASE DISPOSE OF OLD OR DEFECTIVE BATTERIES IN AN ENVIRONMENTALLY SAFE WAY IN ACCORDANCE WITH YOUR LOCAL REGULATIONS



PLEASE DISPOSE OF OLD OR DEFECTIVE BATTERIES IN AN ENVIRONMENTALLY SAFE WAY IN ACCORDANCE WITH YOUR LOCAL REGULATIONS. BATTERY SAFETY:

Follow the polarity(+/-) diagram in the battery compartment. Promptly remove dead batteries of the same or equivalent type a recommended are to be used. DO NOT incinerate used batteries. DO NOT dispose of batteries in fire, as batteries may explode or leak. DO NOT mix old and new batteries or types of batteries (alkaline/standard). DO NOT use rechargeable batteries. DO NOT recharge non-rechargeable batteries. DO NOT short circuit the supply terminals

**Do not return product to retail store. For Technical Assistance and product return Information, please call Customer Care:
877-221-1252**

ACURITE®

Documents / Resources



[ACURITE 00603 Digital Window Thermometer](#) [pdf] Instruction Manual
00603, Digital Window Thermometer

References

- [AcuRite Weather Monitoring | #1 Weather Station Brand in North America](#)

