



Acuity Controls IECC 2021 Design with Wireless Open Office with nLight Air Enabled Fixtures Instructions

[Home](#) » [Acuity Controls](#) » Acuity Controls IECC 2021 Design with Wireless Open Office with nLight Air Enabled Fixtures Instructions 

Contents

- [1 Acuity Controls IECC 2021 Design with Wireless Open Office with nLight Air Enabled Fixtures](#)
- [2 SEQUENCE OF OPERATION](#)
- [3 ADDITIONAL OPTIONS](#)
- [4 Wiring](#)
- [5 SUPPORTS THE FOLLOWING REQUIREMENTS](#)
- [6 Documents / Resources](#)
- [7 Related Posts](#)



Acuity Controls IECC 2021 Design with Wireless Open Office with nLight Air Enabled Fixtures



SEQUENCE OF OPERATION

LIGHTS

- ALL FIXTURES ARE DIMMABLE
- ALL FIXTURES ARE CONTROLLED TOGETHER OR INDEPENDENTLY
- MAXIMUM LEVEL CAN BE TASK TUNED TO ANY PERCENTAGE VIA PROGRAMMING

OCCUPANCY

- GENERAL LIGHTING IN EACH CONTROL ZONE MAY TURN ON TO 100% UPON OCCUPANCY. UNOCCUPIED ZONES MAY COME ON AUTOMATICALLY TO NOT MORE THAN 20% OR MAY STAY OFF
- FIXTURES AND PLUG LOAD AUTOMATICALLY TURN OFF WHEN ROOM BECOMES VACANT
- GENERAL LIGHTING MUST BE CONTROLLED IN ZONES NOT GREATER THAN 600 SQ. FT.
- PLUG LOAD TURNS ON AUTOMATICALLY

DAYLIGHT

- SMOOTH CONTINUOUS DIMMING
- DAYLIGHT ZONES SIZES ARE DEFINED BY WINDOW SIZE OR SKYLIGHT PLACEMENT (NOT SHOWN)
- NOT REQUIRED FOR OFFICES WITHOUT WINDOWS OR THAT HAVE LOADS <150W IN SIDELIT ZONES

MANUAL

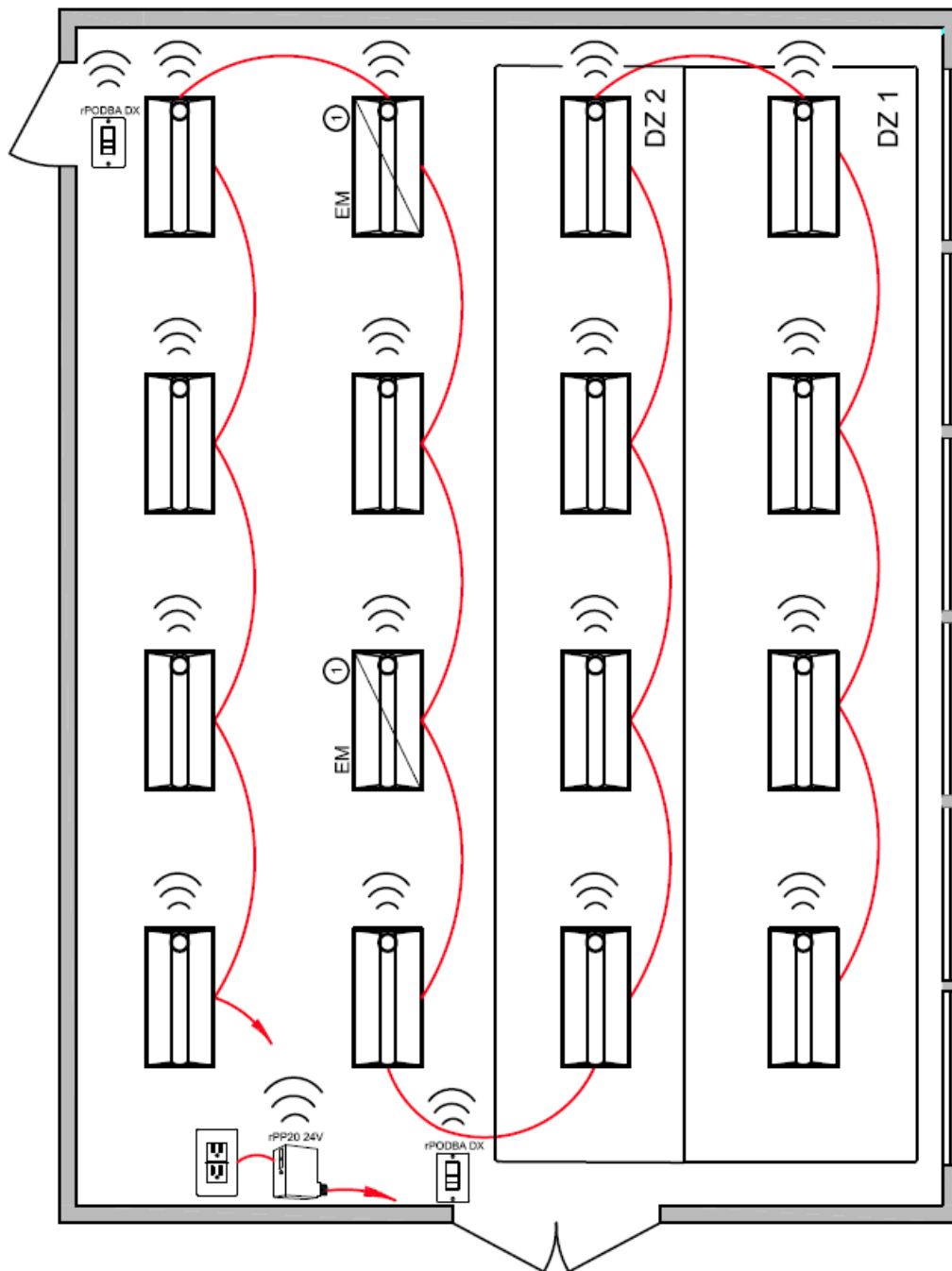
- MASTER ON/OFF & RAISE/LOWER CONTROL OF THE ENTIRE ROOM

ADDITIONAL OPTIONS



- ROOM CAN BE CONNECTED TO NIGHT BACKBONE TO ENABLE NETWORK CONTROL OR TIME SCHEDULES (C405.2.2.1 – TIME-SWITCH CONTROLS), AND ALSO

- QUALIFY FOR ENHANCED DIGITAL LIGHTING CONTROLS (C406.4)
- HVAC CONTROL AVAILABLE THROUGH THE SYSTEM-WIDE BACNET® INTERFACE OPTION ON THE ECLYPSE CONTROLLER
- WIRELESS FIXTURE EMBEDDED CONTROL AND OCCUPANCY/ DAYLIGHTING SENSOR OPTIONS AVAILABLE, PLEASE SEE THE FIXTURE SPECIFICATION SHEET
- nLIGHT-ENABLED FIXTURES COMPLY WITH MONITORING AND CONFIGURATION REQUIREMENTS OF LUMINAIRE LEVEL LIGHTING CONTROLS (LLLC) (C405.2.5)
- OCCUPANT SENSOR CONTROLS IN OPEN PLAN OFFICE SPACES LESS THAN 300 SQ. FT.

Wiring



Some nLight enabled EM fixtures require a normal sense line connection. The wiring shown assumes a battery backup emergency option. See fixture spec sheets for details.

DIAGRAM LEGEND		BILL OF MATERIAL		
 LINE VOLTAGE WIRES  LINE POWER		QTY	PRODUCT #	DESCRIPTION
		14	SEE NOTE	nLIGHT AIR ENABLED TROFFER w/ SENSOR OPTION
		2	SEE NOTE	nLIGHT AIR ENABLED TROFFER w/ BATTERY OPTION
		2	rPODBA DX G2	BATTERY POWERED ON/OFF & RAISE/LOWER WALL POD
		1	rPP16 24V EFP G2	PLUG LOAD RELAY PACK

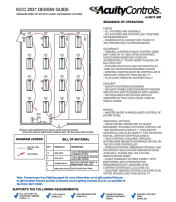
Note:

Contact your local lighting agent for more information on nlight-enabled fixtures. nlight enabled fixtures provide Luminaire Level Lighting Controls (LLLC), as specified in the IECC 2021 CODE.

SUPPORTS THE FOLLOWING REQUIREMENTS

- FULL AUTO-OFF VIA ... OCCUPANCY SENSOR (C405.2.1.1)
- LOCAL SWITCH ... (C405.2.2.3)
- LIGHTING REDUCTION ... (C405.2.2.2)
- ENHANCED DIGITAL LIGHTING CONTROLS (C406.4)
- SIDELIGHT DAYLIGHT ... ZONE (C405.2.3.2)

Documents / Resources

	<p>Acuity Controls IECC 2021 Design with Wireless Open Office with nLight Air Enabled Fixtures [pdf] Instructions</p> <p>IECC 2021 Design with Wireless Open Office with nLight Air Enabled Fixtures, IECC Design, nLight Air Design</p>
---	--