



ActronAir NEO Touch Controller Installation Guide

[Home](#) » [ActronAir](#) » ActronAir NEO Touch Controller Installation Guide 

Contents

- 1 ActronAir NEO Touch Controller
- 2 Product Information
- 3 Product Usage Instructions
- 4 Control Installation
- 5 RJ45 Installation
- 6 Hard Wired Installation
- 7 Wiring Options
- 8 Easy and Intuitive Step-by-Step Commissioning
- 9 SAFETY INFORMATION
- 10 Specifications
- 11 Documents / Resources
 - 11.1 References
- 12 Related Posts



ActronAir NEO Touch Controller



Product Information

The NEO is an air conditioning control system that comes with a dedicated online resource to assist with installation and commissioning. The manual has limited pages to reduce paper usage, and users can access mounting and wiring information, as well as guided videos of the NEO's 5-step commissioning process. The NEO can be wired using Yellow Cat5E cables with RJ45 connectors or using Yellow unterminated Cat5E cable. The product has an intuitive user interface that guides users through a step-by-step commissioning process.

Making installation easier, whilst doing our part for the environment.

As part of our continuous improvement values and our quest for a more sustainable future, we've limited the number of pages in this document in a bid to reduce our paper footprint.

- Having taken this approach, we have however produced a dedicated online resource with information to assist you with
- NEO installation and commissioning. Here you will have access to mounting and wiring information and guided videos of
- NEO's 5 step commissioning process.

To access the NEO installation and commissioning website, simply scan the QR code with your smart device or visit: neo.actronair.com.au/install.



Product Usage Instructions

Before installing the NEO, please read the manual carefully and keep it for future reference. To access the NEO installation and commissioning website, scan the QR code with your smart device or visit neo.actronair.com.au/install. Here are some usage instructions:

Control Installation

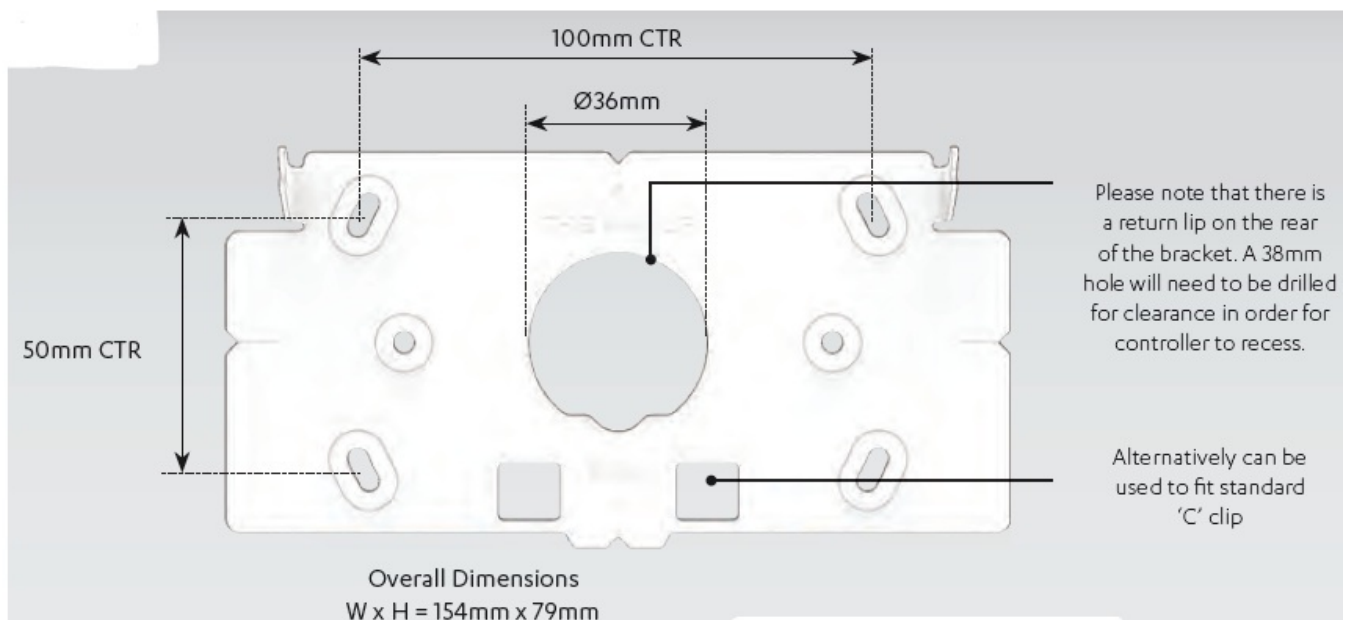
The NEO controller needs to be installed at a location approximately 1.5 meters from the ground. It comes with a mounting bracket that has a return lip on the rear. A 38mm hole will need to be drilled for clearance for the controller to recess. The controller can be mounted using the bracket or using a standard 'C' clip. To install, wire the controller via RJ45 or hard wire (refer to pages 6 and 7 for wiring instructions), latch the top of the controller onto retaining hooks on the bracket, and swing it down allowing magnets to catch and secure it in place. Ensure proper hole clearance and wall cavity depth to avoid unnecessary pressure to the cable and its connection point.

Location

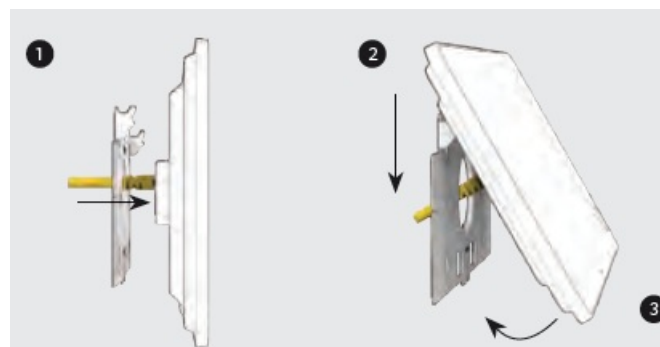


- ENSURE that the wall controller is installed in a location that is within the range of the WiFi access point. The distance is dependent on router model and brand. Refer to your unit access point manual.
- Do not install the wall controller on external walls, directly below the supply air grille or near other additional heat load sources, as these locations may alter sensor readings.
- Do not install the master controller near metallic objects or near power cables as these may effect the wireless data signal it sends and receives.
- Avoid looping excess cable.
- Ensure there is ample space around the wall controller (100mm min) to ensure proper air temperature reading and adequate access for service.
- It is required to use the provided wall anchors and screws to secure device on the wall.

Mounting Bracket



Mounting Method



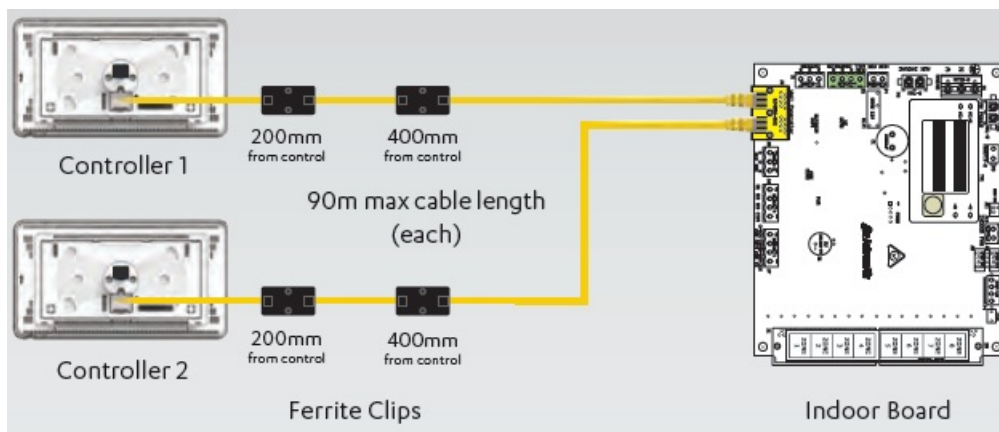
1. Wire controller via RJ45 or hard wire (refer to pages 6 and 7 for wiring instructions).
2. Latch top of controller onto retaining hooks on bracket.
3. Swing controller down allowing magnets to catch and secure in place.

NOTE:

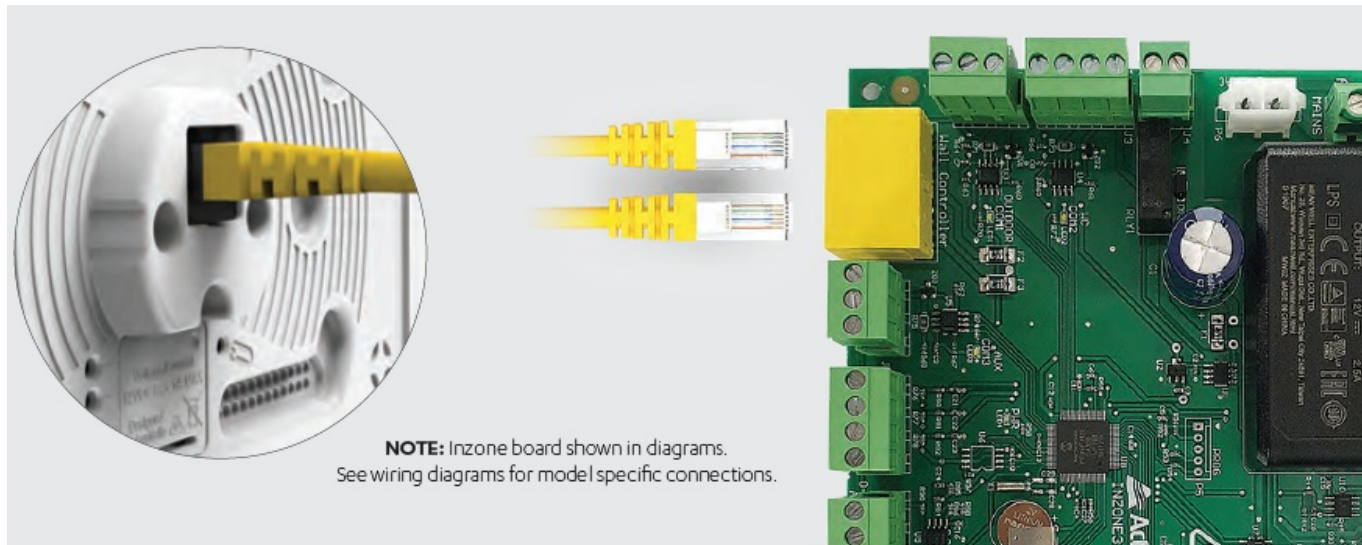
- Use screws provided.
- Use provided wall plug (x2) in leu of wall mates if applicable.
- Wall mates or wall plug must be totally flush to the wall.
- Caution should be taken to ensure that there is adequate hole clearance and wall cavity depth to avoid unnecessary pressure to the cable and its connection point.

RJ45 Installation

Power Supply- Using Yellow Cat5E cables with RJ45 connectors (preferred method)

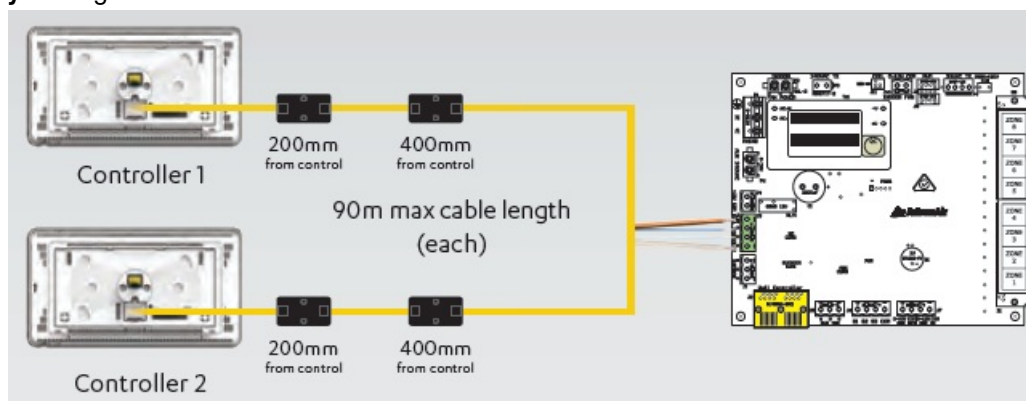


NOTE: Inzone board shown in diagrams. See wiring diagrams for model specific connections.

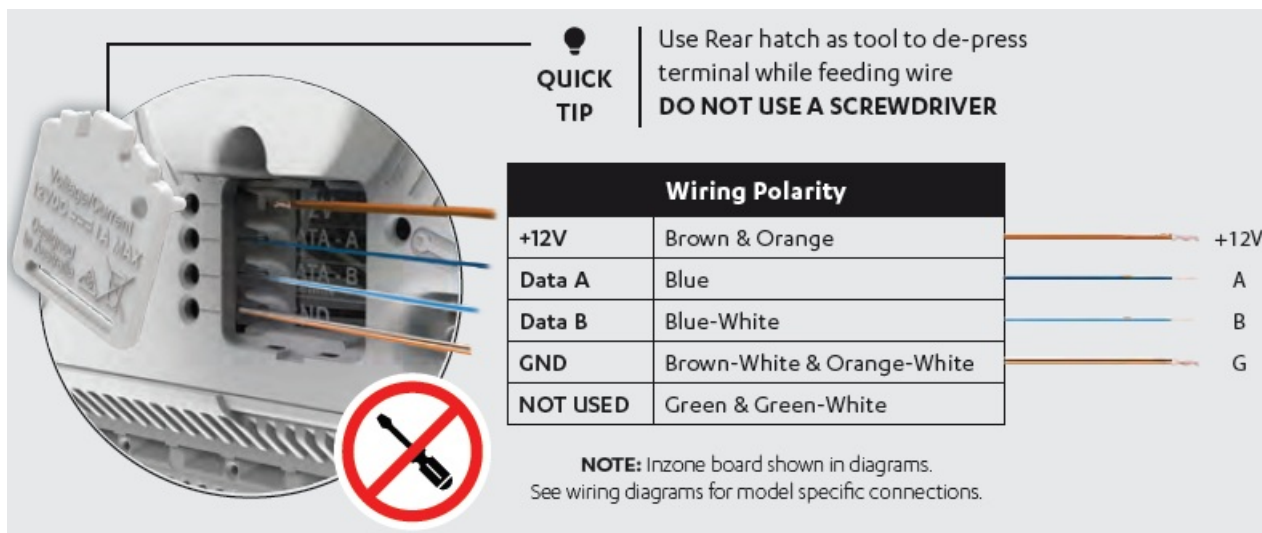


Hard Wired Installation

Power Supply- Using Yellow unterminated Cat5E cable



NOTE: Inzone board shown in diagrams. See wiring diagrams for model specific connections.

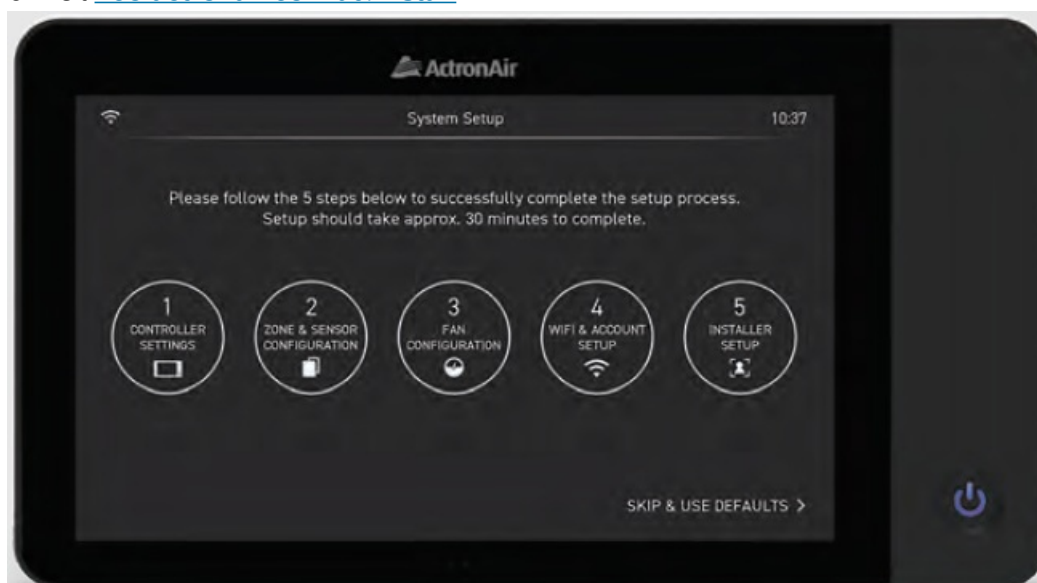


Wiring Options

The NEO can be wired using Yellow Cat5E cables with RJ45 connectors or using Yellow unterminated Cat5E cables. For RJ45 installation, use the preferred method of wiring using Yellow Cat5E cables with RJ45 connectors. Place Ferrite clips supplied (if any) approximately 200mm and 400mm from the NEO. For hard-wired installation, use Yellow unterminated Cat5E cable. Place Ferrite clips supplied (if any) approximately 200mm and 400mm from the NEO. See wiring diagrams for model-specific connections.

Easy and Intuitive Step-by-Step Commissioning

When you power on NEO for the first time you'll be prompted with our guided step-by-step setup process, making commissioning as simple as a few touches of the wall controller. Our intuitive user interface has been designed to take you from power on to ready-to-go in minutes. To view the instruction videos, scan the QR code with your smart device or visit neo.actronair.com.au/install.



TO VIEW THE INSTRUCTION VIDEOS: Simply scan the QR code with your smart device.



Or visit: neo.actronair.com.au/install

SAFETY INFORMATION

- Only licensed HVAC technicians* should install and service this air conditioning controller. Improper service or alteration by an unqualified technician could result in significant and major damage to the product or property which may render your warranty null and void. Such unqualified service could also lead to severe physical injury or death. Follow all safety instructions in this literature and all warning labels that are attached to the equipment.
- Prevailing WH&S regulations must be observed and will take precedence to the safety instructions contained on this manual. Safe work practices and environment must be the paramount importance in the performance of all the service procedures.
- Ensure that controller installation complies with relevant council regulations and building code standards.
- All electrical wiring must be in accordance with current electrical authority regulations and all wiring connections to be as per electrical diagram provided.
- This appliance is not intended for use by young children or infirm persons unless they have been adequately supervised by a responsible person to ensure that they can use the appliance safely. Young children should be supervised to ensure that they do not play with the appliance.
- Secure the power cords and control cables that go in/out of the controller.

Specifications

NEO Touch Controller

- **Compatible with ActronAir model** Advance Series, Classic Series 2, Variable Capacity Commercial
- **Power supply** 12VDC $\pm 5\%$
- **Screen display** 7", 1024 x 600, IPS – wide viewing angle, enhanced backlight
- **WiFi compatibility** 802.11 b/g/n 2.4 GHz
- **Temperature sensor** Yes
- **Humidity sensor** Yes
- **Proximity/light sensor** Yes
- **Operating temperature** -20°C to 70°C
- **Storage temperature** -30°C to 80°C
- **Dimensions (mm)** 118mm x 212mm x 17mm (HxWxD)
- **Weight (grams)** 450gm (360gm without mounting bracket)
- **Build** Toughened glass front, ABS plastic back
- **Casing colour** Jet Black / Ceramic White
- **Maximum zones** 8 zones


NEO Connect Mobile App

- **Compatible with ActronAir model** NTW-1000, NTB-1000
- **Platform** iOS and Android
- **OS requirement** iOS 9 or later – Android Version 6 Marshmallow or later
- **Requirement** WiFi or mobile data with internet access

Copyright © 2020

All rights reserved. No part or contents of this book may be reproduced or transmitted in any form or by any means without the written permission of Actron Engineering Pty. Ltd. ActronAir is constantly seeking ways to improve the design of its products, therefore specifications are subject to change without notice.

Documents / Resources

	<p>ActronAir NEO Touch Controller [pdf] Installation Guide 9590-3033-01, NEO, Touch Wall Controller, 9590-3033-01 NEO Touch Wall Controller, NEO Touch Wall Controller, Controller, NEO Touch Controller, Touch Controller, Controller</p>
---	--

References

-  [NEO Installation & Commissioning Guide – ActronAir NEO](#)