



# ACTIVSENSE NC-MC-0-R Intelligent Conventional Manual Call Point Instruction Manual

[Home](#) » [ACTIVSENSE](#) » ACTIVSENSE NC-MC-0-R Intelligent Conventional Manual Call Point Instruction Manual



**ACTIVSENSE NC-MC-0-R Intelligent Conventional Manual Call Point**



## Contents

- [1 Description](#)
- [2 Figures](#)
- [3 Installation](#)
- [4 Maintenance and Testing](#)
  - [4.1 Maintenance](#)
  - [4.2 Testing](#)
- [5 Specifications](#)
- [6 Regulatory Information](#)
- [7 Contact Information And Product Documentation](#)
- [8 Product Warnings And Disclaimers](#)
- [9 Documents / Resources](#)
  - [9.1 References](#)
- [10 Related Posts](#)

## Description

The NC Series Intelligent Conventional Manual Call Point is designed for indoor use with compatible conventional fire panels. Each unit includes a built-in resistor (0, 100, 470, or 560 $\Omega$ , depending on the model purchased).

All units are supplied with a resettable element – this can be replaced with a breakable element, if required (order number N-MC-FE). See “Replacing the resettable element”.

The series includes the following models.

Model	Description
NC-MC-0-R	Red intelligent conventional manual call point – 0Ω [1]
NC-MC-100-R	Red intelligent conventional manual call point – 100Ω
NC-MC-470-R	Red intelligent conventional manual call point – 470Ω
NC-MC-560-R	Red intelligent conventional manual call point – 560Ω [2]
NC-MC-IS-0-R	Red intelligent conventional intrinsically safe manual call point – 0Ω

[1] Also available in blue (NC-MC-0-U), green (NC-MC-0-G), orange (NC-MC-0-O), white (NC-MC-0-W), and yellow (NC-MC-0-Y).

[2] Also available in blue (NC-MC-560-U).

Figures

Figure 1: Backbox and mounting holes

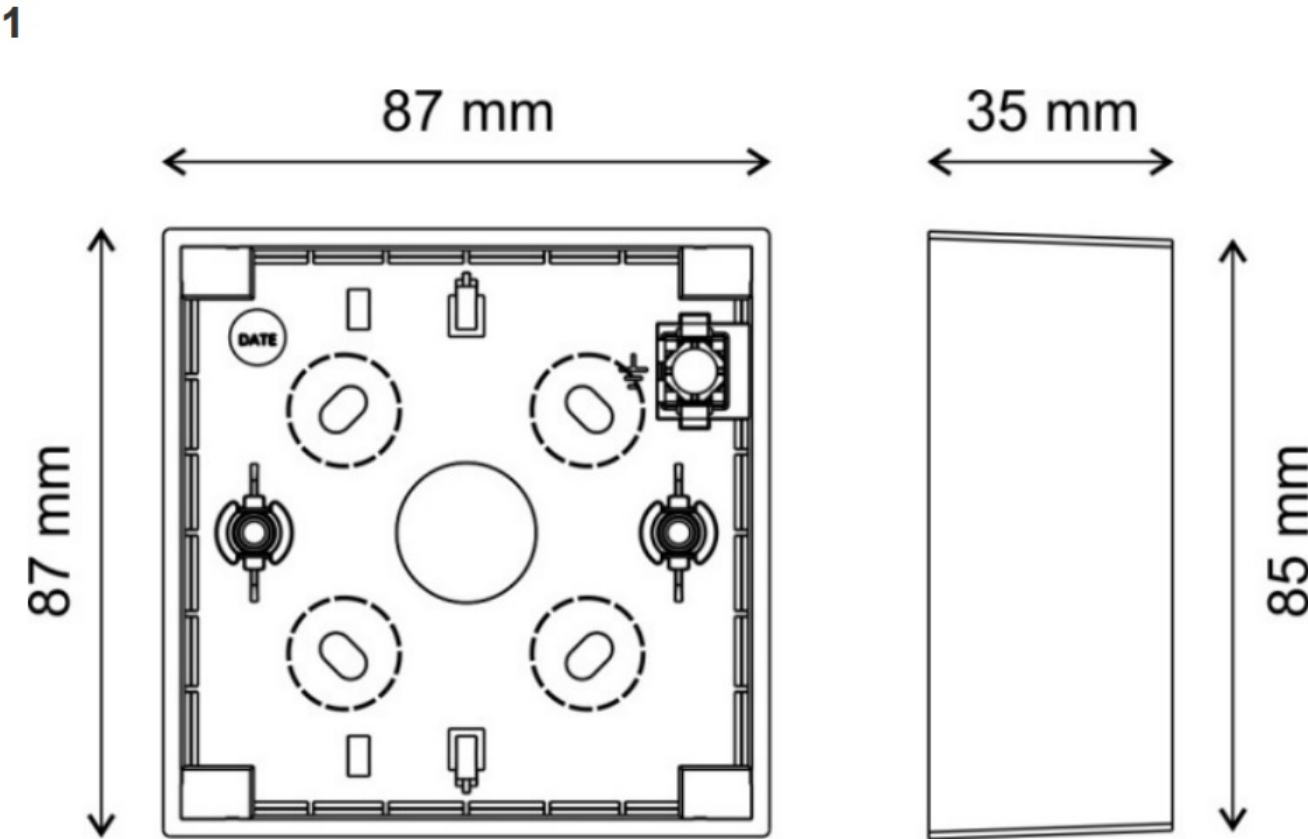


Figure 2: Front assembly terminal block

2

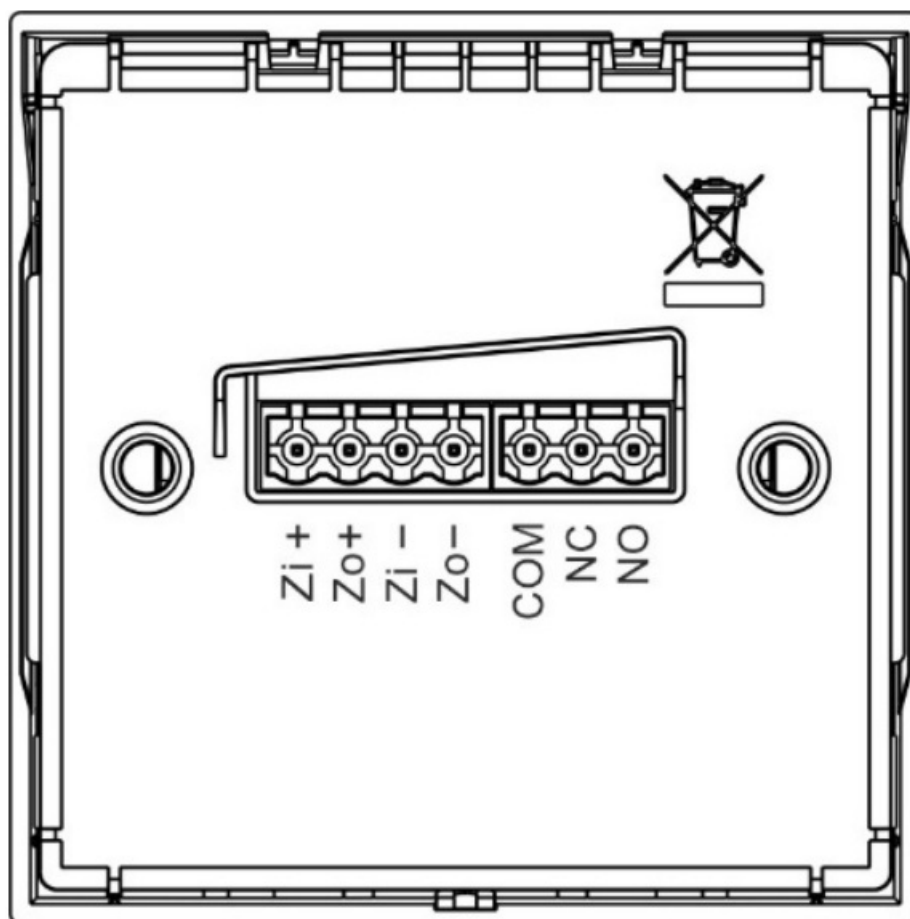


Figure 3: Unlocking the front cover

3

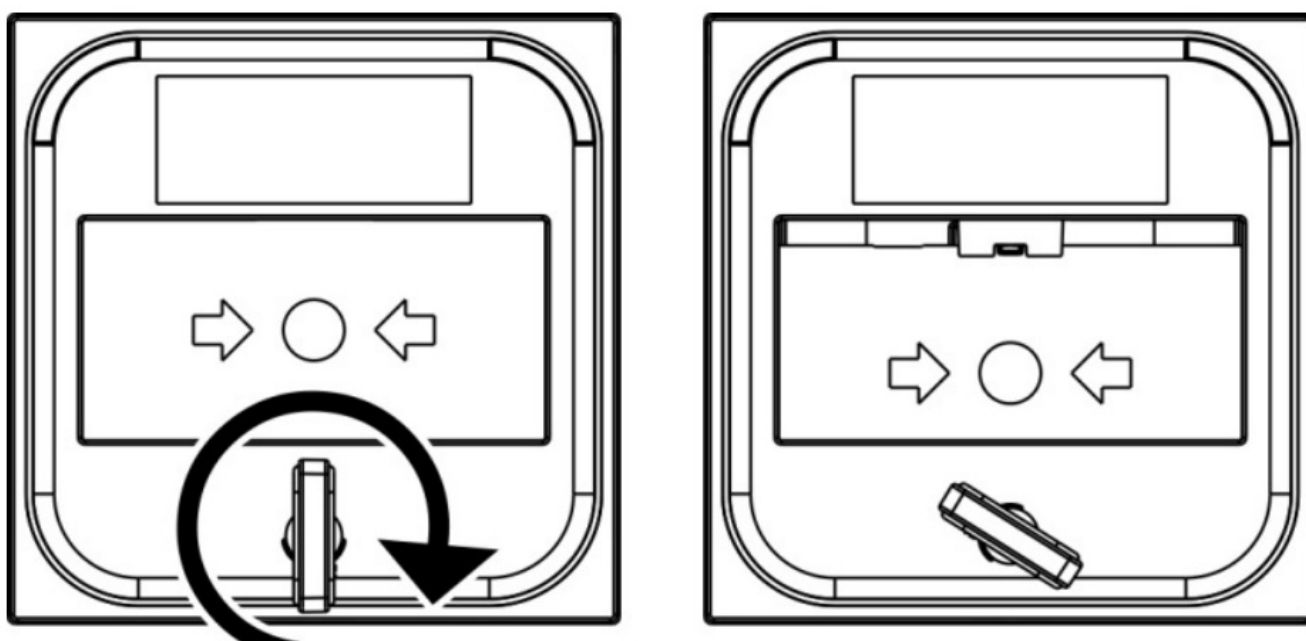


Figure 4: Removing the front cover

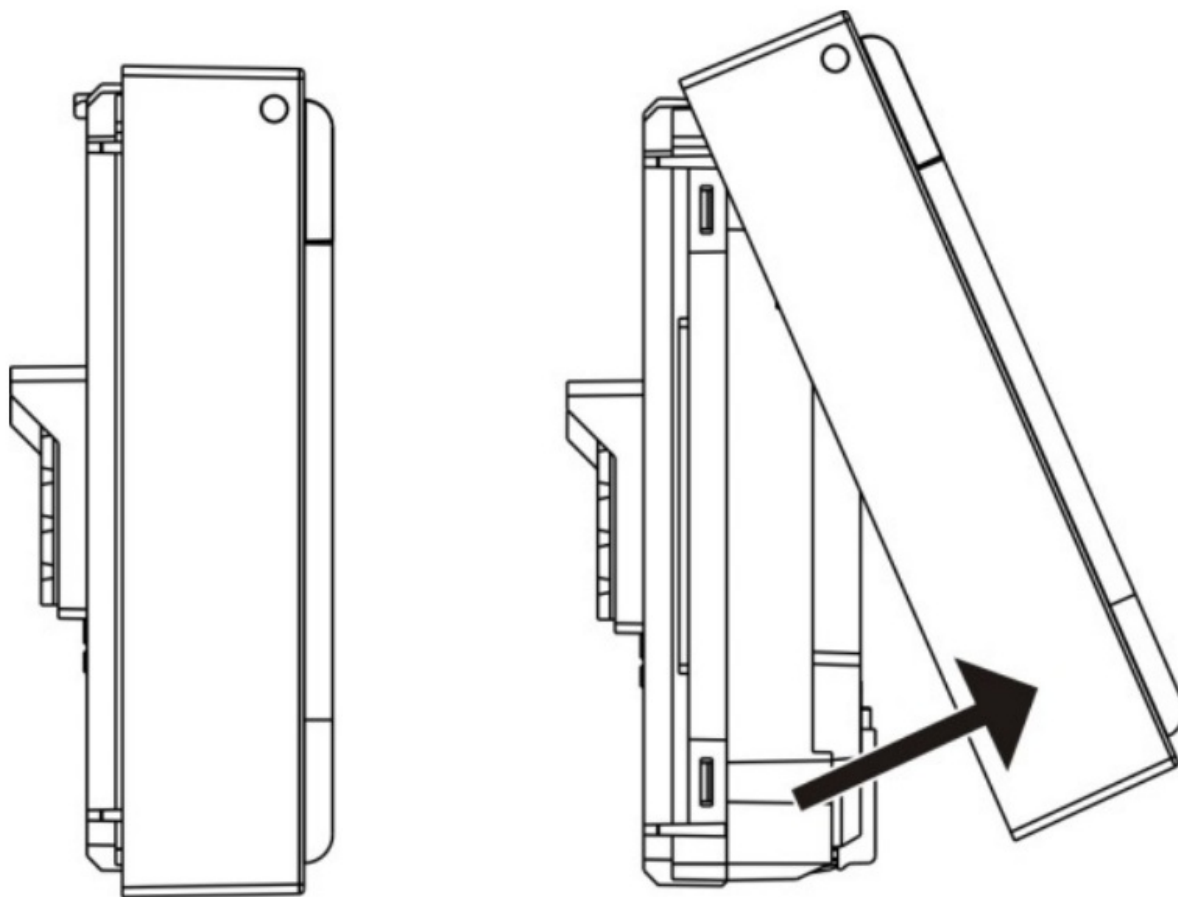


Figure 5: Removing the resettable element

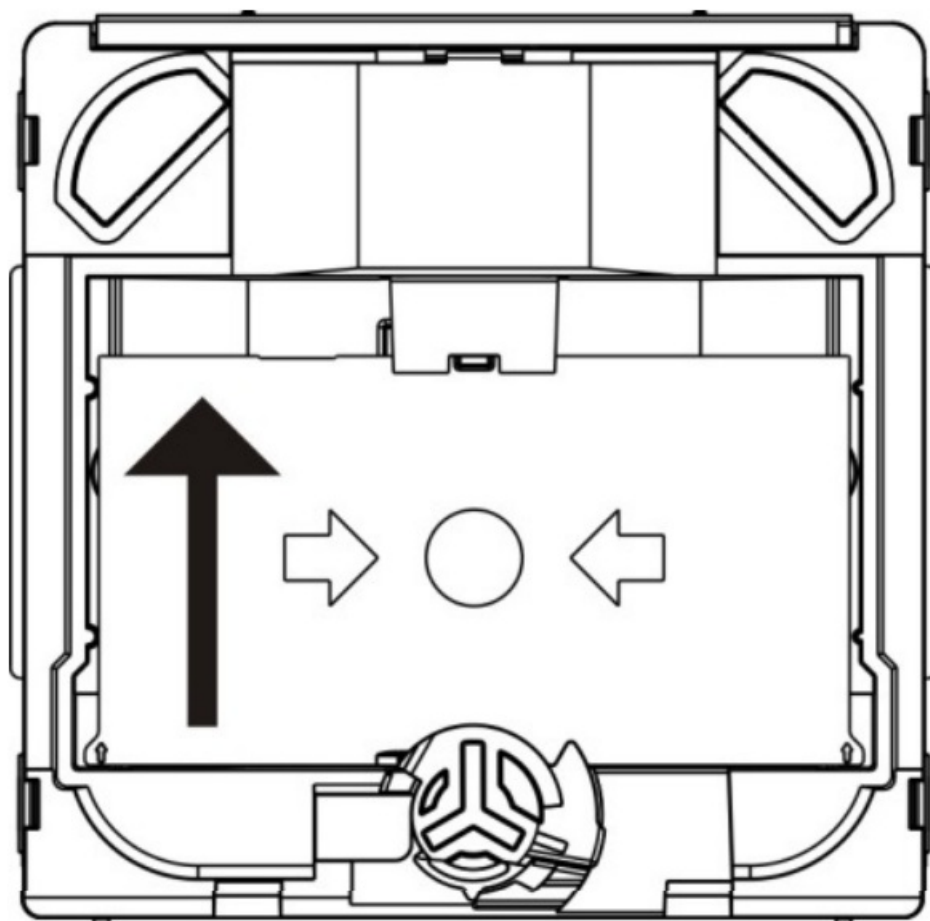
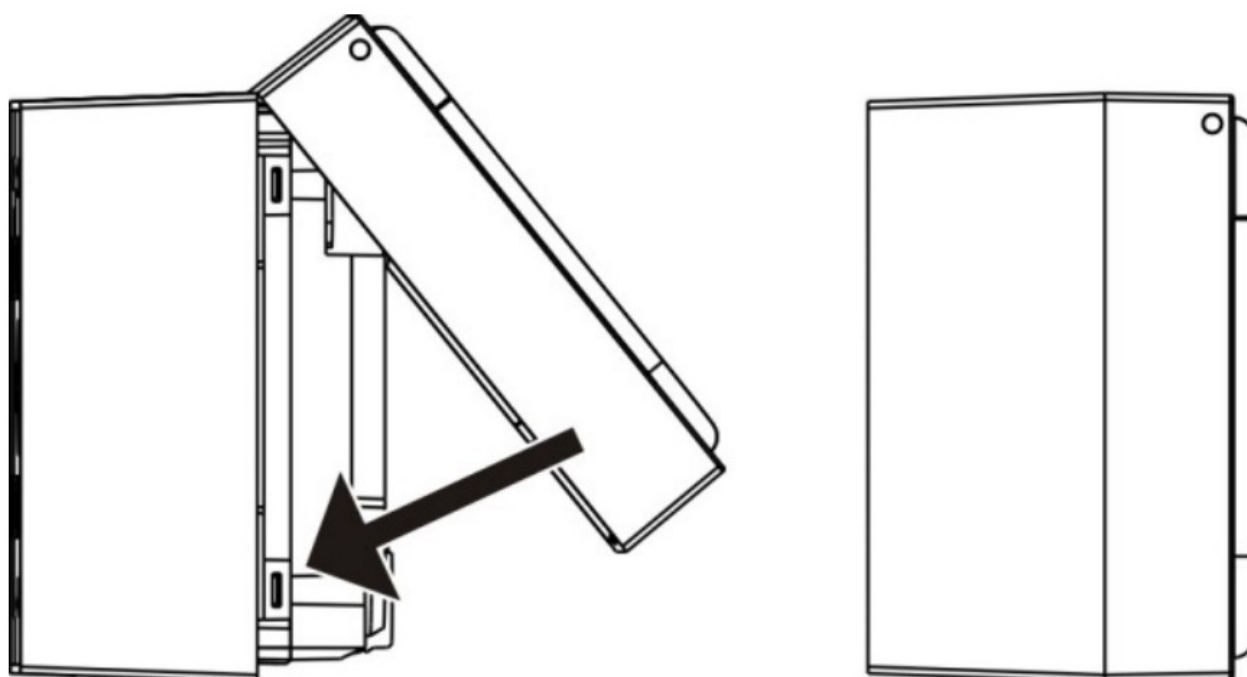


Figure 6: Replacing the front cover

6



**Caution:** This product must be installed and maintained by qualified personnel adhering to all local or national installation requirements and any other applicable regulations.

The manual call point can be surface mounted or recess mounted.

For surface mounting, order one of the backboxes shown in the table below.

Model	Description	Colour
N-MC-BB-R	Red backbox	Red
N-MC-BB-U	Blue backbox	Blue
N-MC-BB-G	Green backbox	Green
N-MC-BB-O	Orange backbox	Orange
N-MC-BB-W	White backbox	White
N-MC-BB-Y	Yellow backbox	Yellow

For recess mounting, order one of the recess adaptors shown in the table below.

Model	Description
N-MC-AFM-R	Red recess adaptor
N-MC-AFMG-R	Red recess adaptor with fork grips
N-MC-AFM-G	Green recess adaptor

Remember to remove the protective dust cover before installation.

**Note:** The dust cover may also be used to indicate when the unit is not operational (for example, before commissioning, during maintenance, when disabled, etc.)

#### **To surface mount the manual call point:**

1. Fix the backbox onto the wall using 4 × M4 screws (not supplied) and feed the zone cable through the selected cable knockouts or through the rear of the backbox.  
See Figure 1 for the location of the mounting holes.
2. Connect zone cable and relay cable (if required) to the supplied terminal block, and then plug the terminal block into the PCB connector on the back of the front assembly (see Figure 2).  
Use the supplied cable link to test cable continuity during installation.  
See “Wiring” below for terminal block connections and zone cable specifications.
3. Unlock and remove the front cover, and then remove the resettable element.  
To unlock the front cover, insert the key and turn it clockwise (two clicks), then pull the cover outwards from the bottom to remove it (see Figure 3 and Figure 4).  
To remove the resettable element, push the element up, and then pull it out (see Figure 5).
4. Fix the front assembly to the backbox using the 2 screws supplied with the unit (located in the backbox).
5. Replace the resettable element (or add the breakable element, if required), and then replace the front cover (see Figure 6).  
Turn the key anticlockwise (two clicks) to lock the cover, and then remove the key.

Finally, test the manual call point (see “Testing”).

## Wiring

For optimal system performance, use 0.129 to 3.31 mm<sup>2</sup> (26 to 12 AWG) twisted-pair cable. Wire the unit as described below. Observe the indicated polarity.

Terminal	Description
Zi+	Zone in (+)
Zo+	Zone out (+)
Zi–	Zone in (–)
Zo–	Zone out (–)
COM	Common
NC	Normally closed
NO	Normally open

## Status LED

Two steady red LEDs on the front of the unit indicate that the manual call point has been activated and is in alarm.

**Note:** The 0Ω manual call point has no LED indications.

## Maintenance and Testing

### Maintenance

The unit should be maintained and tested according to local or national requirements and any other applicable regulations. Do not modify internal wiring or circuitry.

### Testing

To activate an alarm, push the resettable element or turn the key clockwise (one click). To reset the device, turn the key anticlockwise (one click). Reset the control panel after testing.

### Replacing the resettable element

Replace the resettable element (or add the breakable element) as follows:

1. Unlock and remove the front cover as described in “Installation” on page 2.
2. Push the element up, and then pull it out (see Figure 5).
3. Replace the resettable element (or add the breakable element, if required).
4. Replace the front cover.

## Specifications

### Electrical



Operating voltage	20 to 24 VDC
Current consumption	
Standby	0 mA
Alarm	
0Ω MCP	55 mA [1]
100Ω MCP	45 mA
470Ω MCP	30 mA
560Ω MCP	25 mA
Contact rating	Max. 1 A at 24 V
[1] Limited by the control panel	



## Mechanical and environmental

IP rating	IP41
Backbox cable knockouts	
Back	1 × Ø 20 mm
Top	1 × Ø 25 mm
Bottom	2 × Ø 20 mm
Wire size	
Minimum	0.129 mm <sup>2</sup> (26 AWG)
Maximum	3.31 mm <sup>2</sup> (12 AWG)
Operating environment	
Operating temperature	–10 to +55°C
Storage temperature	–25 to +70°C
Relative humidity	10 to 95% (noncondensing)
Colour	
Red	RAL3028
Blue	RAL5005
Green	RAL6024
Orange	RAL2008
White	RAL9003
Yellow	RAL1003
Weight	
Without backbox	101 g
With backbox [1]	160 g
Dimensions	
Without backbox	87 × 87 × 26 mm
With backbox [1]	87 × 87 × 57 mm
[1] Backbox not supplied	

## Regulatory Information

This section provides a summary on the declared performance according to the Construction Products Regulation (EU) 305/2011 and Delegated Regulations (EU) 157/2014 and (EU) 574/2014.

For detailed information, see the product Declaration of Performance (available at [firesecurityproducts.com](https://firesecurityproducts.com)).

EU compliance	
Certification body	0370
Manufacturer	Carrier Safety System (Hebei) Co. Ltd., 80 Changjiang East Road, QETDZ, Qinhuangdao 066004, Hebei, China. Authorized EU manufacturing representative: Carrier Fire & Security B.V., Kelvinstraat 7, 6003 DH Weert, Netherlands.
Year of first CE marking	2021
Declaration of Performance number [1]	03-0211-360-1003
EN 54 [1]	EN 54-11 Type A (Indoor Use)
Product identification	NC-MC-0-R, NC-MC-100-R, NC-MC-470-R, NC-MC-560-R, NC-MCS06-560-R, NC-MCS18-560-R
Intended use	See the product Declaration of Performance
Declared performance	See the product Declaration of Performance
	2012/19/EU (WEEE Directive): Products marked with this symbol cannot be disposed of as unsorted municipal waste in the European Union. For proper recycling, return this product to your local supplier upon the purchase of equivalent new equipment, or dispose of it at designated collection points. For more information see: <a href="https://recyclethis.info">recyclethis.info</a> .

[1] The Declaration of Performance only covers the red manual call points listed in Product identification. Only red manual call points are covered by EN 54-11 (this standard does not cover intrinsically safe devices).

## Contact Information And Product Documentation

For contact information or to download the latest product documentation, visit [firesecurityproducts.com](https://firesecurityproducts.com).

## Product Warnings And Disclaimers

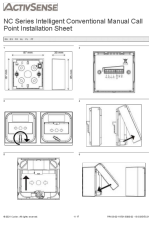
THESE PRODUCTS ARE INTENDED FOR SALE TO AND INSTALLATION BY QUALIFIED PROFESSIONALS. CARRIER FIRE & SECURITY B.V. CANNOT PROVIDE ANY ASSURANCE THAT ANY PERSON OR ENTITY BUYING ITS PRODUCTS, INCLUDING ANY "AUTHORIZED DEALER" OR "AUTHORIZED RESELLER", IS PROPERLY TRAINED OR EXPERIENCED TO CORRECTLY INSTALL FIRE AND SECURITY RELATED PRODUCTS.

For more information on warranty disclaimers and product safety information, please check <https://firesecurityproducts.com/policy/product-warning/> or scan the QR code:



# ACTIVSENSE

## Documents / Resources

	<p><a href="#">ACTIVSENSE NC-MC-0-R Intelligent Conventional Manual Call Point</a> [pdf] Instruction Manual</p> <p>NC-MC-0-R Intelligent Conventional Manual Call Point, NC-MC-0-R, Intelligent Conventional Manual Call Point, Conventional Manual Call Point, Manual Call Point, Call Point</p>
--	---

## References

- [Home - Fire Security Products](#)
- [HOME](#)
- [HOME](#)