



ACT X386 Wireless Multi Connect Bluetooth Mouse User Guide

[Home](#) » [ACT](#) » ACT X386 Wireless Multi Connect Bluetooth Mouse User Guide 

Contents

- [1 ACT X386 Wireless Multi Connect Bluetooth Mouse](#)
- [2 Product Information](#)
- [3 Product Usage Instructions](#)
- [4 Installation](#)
- [5 Safety Instruction](#)
- [6 Documents / Resources](#)
 - [6.1 References](#)
- [7 Related Posts](#)



ACT X386 Wireless Multi Connect Bluetooth Mouse



Product Information

The Multi Connect Wireless Mouse (Model: AC5145) is a versatile and user-friendly mouse that offers both Bluetooth and USB connectivity options. It is designed to provide a seamless and efficient experience for users.

Specifications

- Model: AC5145
- Connectivity: Bluetooth and USB
- Operating Range: Up to 10 meters
- Compatibility: Windows, Mac, Android, iOS
- Battery Life: Up to 12 months (may vary based on usage)

Product Usage Instructions

Bluetooth Connection

1. Ensure that your device's Bluetooth is turned on.
2. Press the Bluetooth button on the bottom of the mouse to enter pairing mode.
3. On your device, go to "Bluetooth Settings" and search for available devices.
4. Select "AC5145" from the list of devices.
5. Once connected, the LED light on the mouse will stop blinking and remain steady.

USB Connection

1. Insert the 2-in-1 USB receiver into an available USB port on your computer.
2. Make sure your device recognizes the USB receiver.
3. The mouse will automatically connect to the USB receiver once it is inserted.

Switching between Bluetooth and USB

The Multi Connect Wireless Mouse allows you to seamlessly switch between Bluetooth and USB connectivity:

1. To switch to Bluetooth mode, press the Bluetooth button on the bottom of the mouse.
2. To switch to USB mode, remove the USB receiver from the computer or insert it back in.

FAQ

Q: Where can I find safety information?

A: Safety information can be found at www.act-connectivity.com/safety.

Q: Where can I find service, manuals, firmware, or updates?

A: For service, manuals, firmware, or updates, please visit www.act-connectivity.com.

Q: What is the warranty period for the Multi Connect Wireless Mouse?

A: The Multi Connect Wireless Mouse comes with a 5-year warranty. For warranty claims, please contact ACT at the following address:

ACT, Koolhovenstraat 1E, 3772 MT Barneveld, The Netherlands

Q: Where was the product manufactured?

A: The Multi Connect Wireless Mouse is made in China.

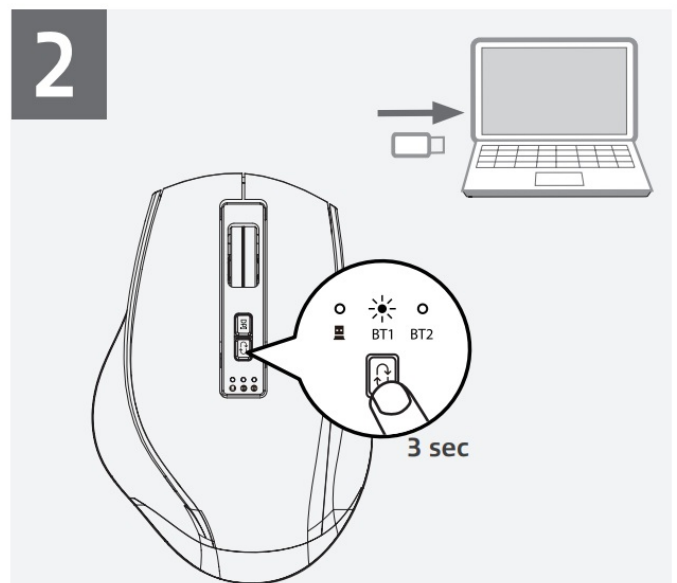
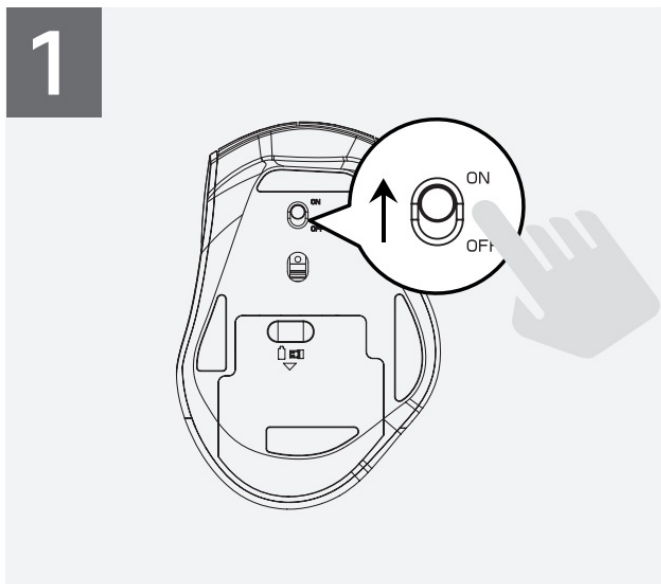
Q: Can I recycle the mouse and its batteries?

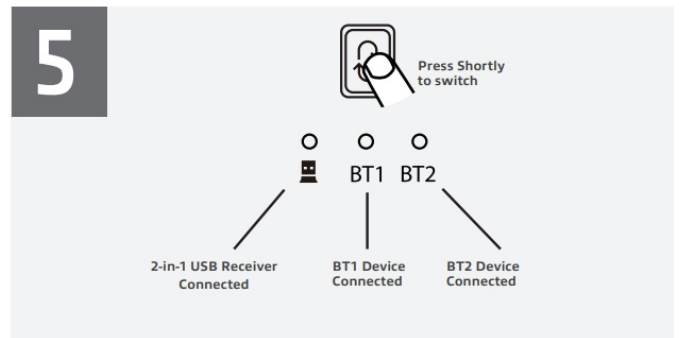
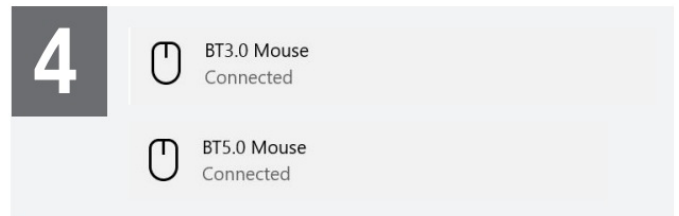
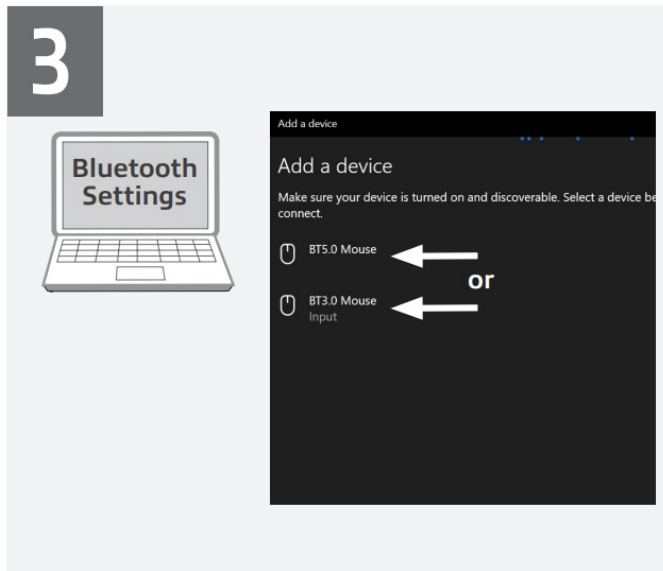
A: Yes, both the mouse and its batteries can be recycled. Please follow your local recycling guidelines.

Q: What is the PAP value mentioned?

A: The PAP value is not relevant to the usage of the Multi Connect Wireless Mouse. It may refer to a separate section or feature in the user manual.

Installation





You can find safety information at www.act-connectivity.com/safety

For service, manuals, firmware or updates visit www.act-connectivity.com

Safety Instruction

For PLUGGABLE EQUIPMENT, the socket-outlet shall be installed near the equipment and shall be easily accessible

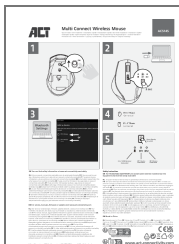
Made in China

5 Year Warranty

ACT, Koolhovenstraat 1E, 3772 MT Barneveld, The Netherlands

www.act-connectivity.com

Documents / Resources






[ACT X386 Wireless Multi Connect Bluetooth Mouse](#) [pdf] User Guide

X386 Wireless Multi Connect Bluetooth Mouse, X386, Wireless Multi Connect Bluetooth Mouse, Multi Connect Bluetooth Mouse, Connect Bluetooth Mouse, Bluetooth Mouse, Mouse

References

- [Safety instructions](#) | [ACT](#)

-  [Business Listing and Review Management | Connectivity](#)
-  [Home | ACT](#)
-  [Safety instructions | ACT](#)
- [User Manual](#)