



ACT AC8331 Monitor Arm Gas Spring 1 Screen Installation Guide

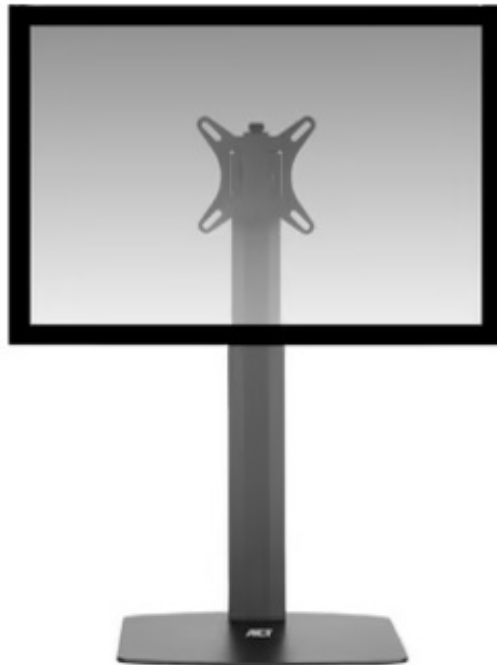
[Home](#) » [ACT](#) » ACT AC8331 Monitor Arm Gas Spring 1 Screen Installation Guide 

Contents

- [1 ACT AC8331 Monitor Arm Gas Spring 1 Screen](#)
- [2 instruction](#)
- [3 MAINTENANCE](#)
- [4 PARTS](#)
- [5 INSTALLATION](#)
- [6 5 Year Warranty](#)
- [7 Documents / Resources](#)
 - [7.1 References](#)
- [8 Related Posts](#)



ACT AC8331 Monitor Arm Gas Spring 1 Screen



instruction

Read the entire instruction before you start the installation and assembly

CAUTION: Use with products heavier than the rated weights indicated may result in instability causing possible injury.

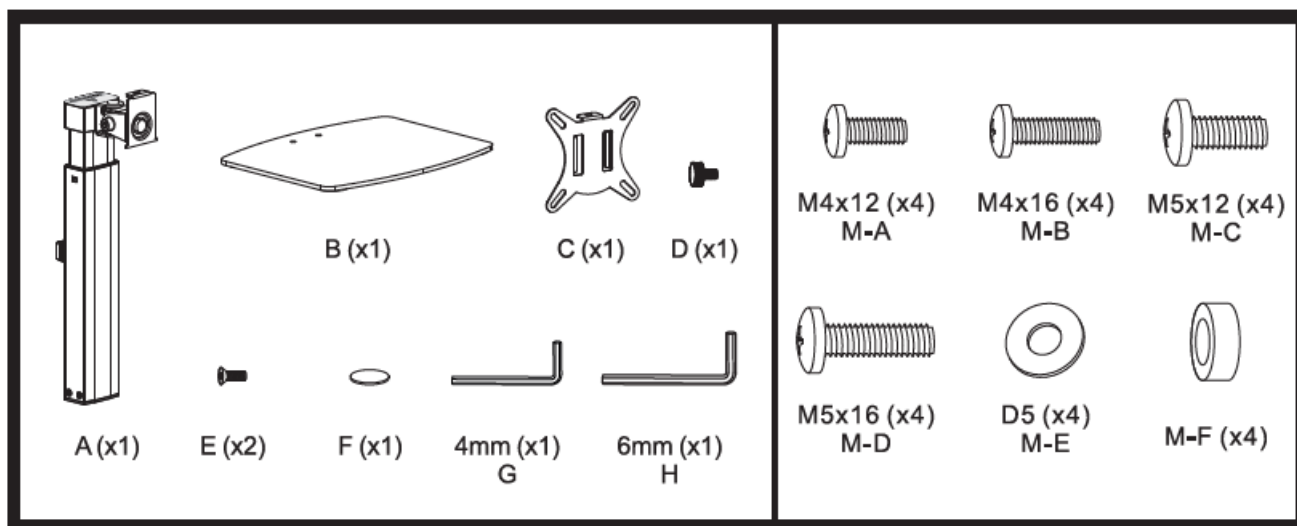
- Mounts must be attached as specified in assembly instructions. Improper installation may result in damage or serious personal injury.
- Make sure that the supporting surface will safely support the combined weight of the equipment and all attached hardware and components
- Use the mounting screws provided and DO NOT OVER TIGHTEN mounting screws.
- This product contains small items that could be a choking hazard if swallowed. Keep these items away from children
- This product is intended for indoor use only. Using this product outdoors could lead to product failure and injury.

IMPORTANT: Ensure that you have received all parts according to the component checklist prior to the installation.

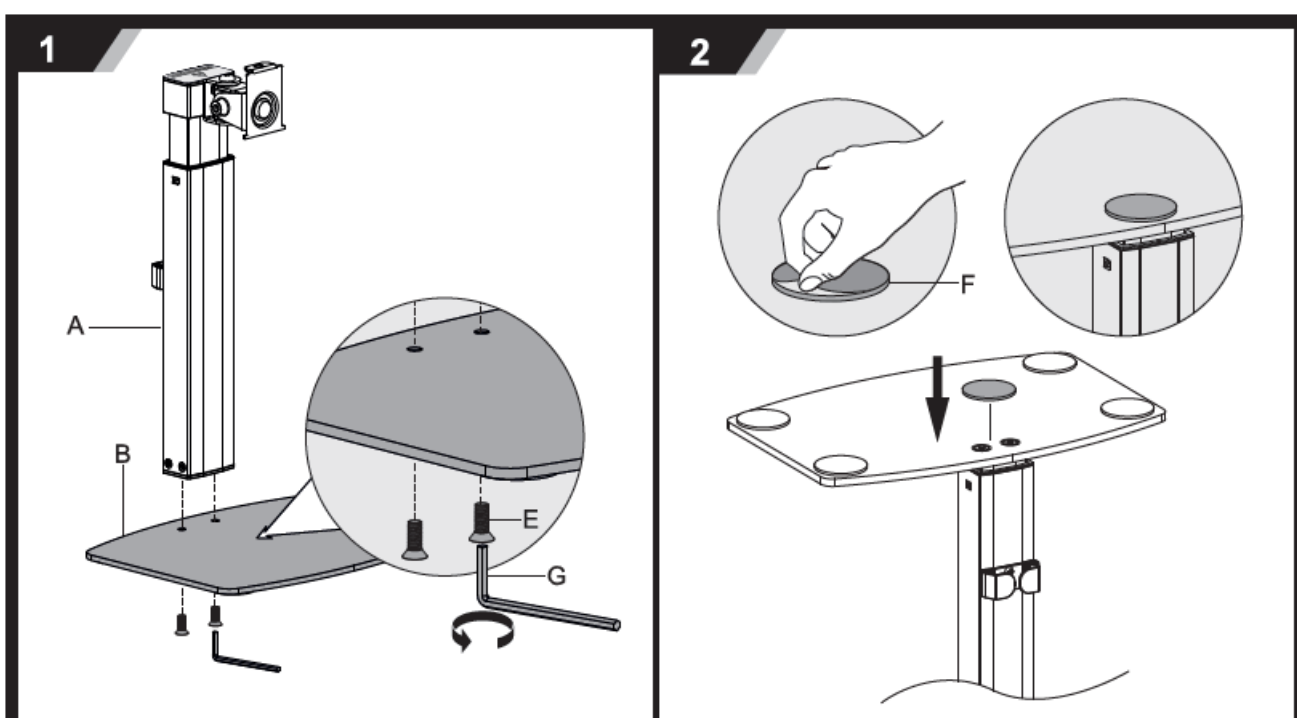
MAINTENANCE

Check that the bracket is secure and safe to use at regular intervals (at least every three months).

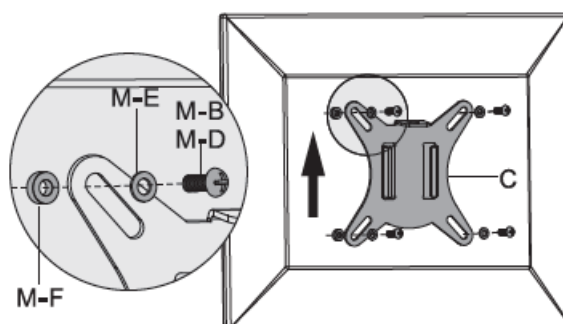
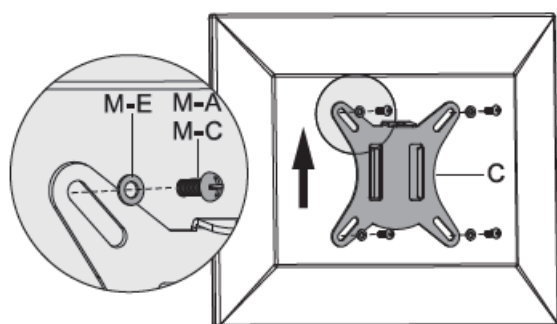
PARTS



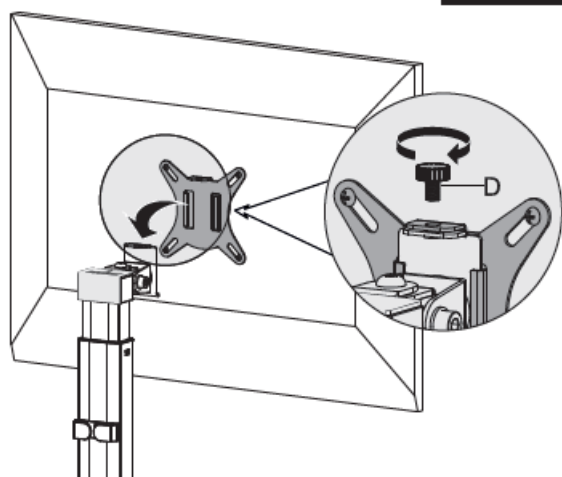
INSTALLATION



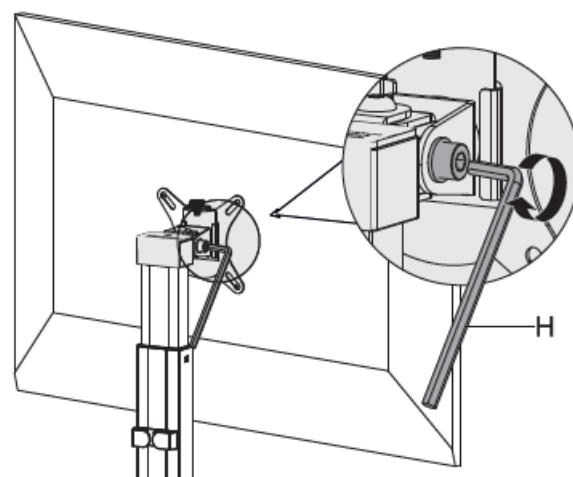
3



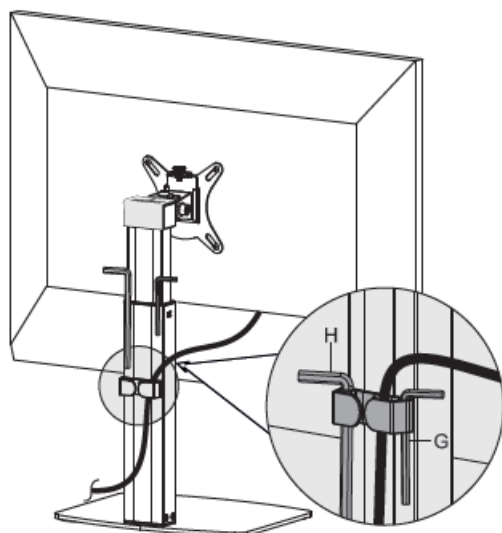
4



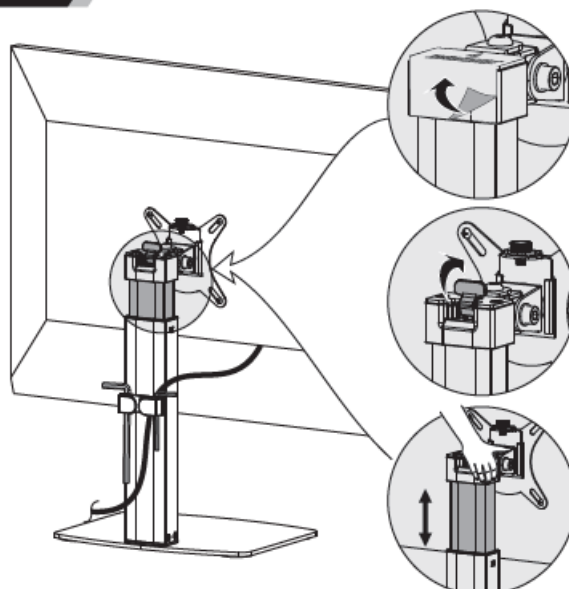
5

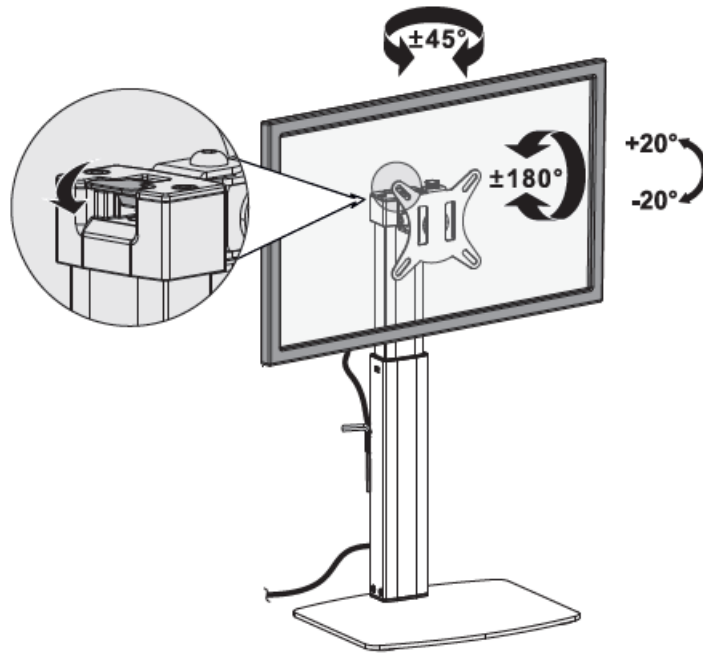


6



7






5 Year Warranty

ACT, Koolhovenstraat 1E, 3772 MT Barneveld, The Netherlands www.act-connectivity.com

Documents / Resources

| | |
|---|---|
|  | <p>ACT AC8331 Monitor Arm Gas Spring 1 Screen [pdf] Installation Guide AC8331 Monitor Arm Gas Spring 1 Screen, AC8331, Monitor Arm Gas Spring 1 Screen, Gas Spring 1 Screen, Spring 1 Screen</p> |
|---|---|

References

- [Safety instructions | ACT](#)
- [Online Review & Business Listing Management | Connectivity](#)
- [Home | ACT](#)
- [Safety instructions | ACT](#)