



ACT AC5146 Wireless Multi Connect Mouse Instruction Manual

[Home](#) » [ACT](#) » ACT AC5146 Wireless Multi Connect Mouse Instruction Manual 

Contents

- [1 ACT AC5146 Wireless Multi Connect Mouse](#)
- [2 Product Usage Instructions](#)
- [3 Safety Instructions](#)
- [4 Specification](#)
- [5 Warranty](#)
- [6 Frequently Asked Questions \(FAQ\)](#)
- [7 Documents / Resources](#)
 - [7.1 References](#)
- [8 Related Posts](#)

ACT

ACT AC5146 Wireless Multi Connect Mouse



Product Specifications

- Product: Bluetooth Wireless Mouse
- Connectivity: Bluetooth, 2.4 GHz
- Model: AC5146

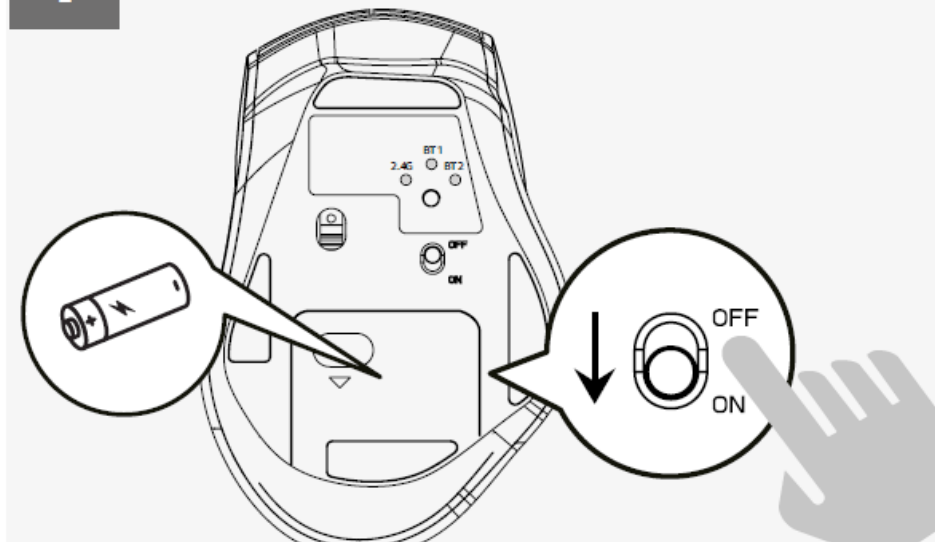
Product Usage Instructions

Bluetooth Connection

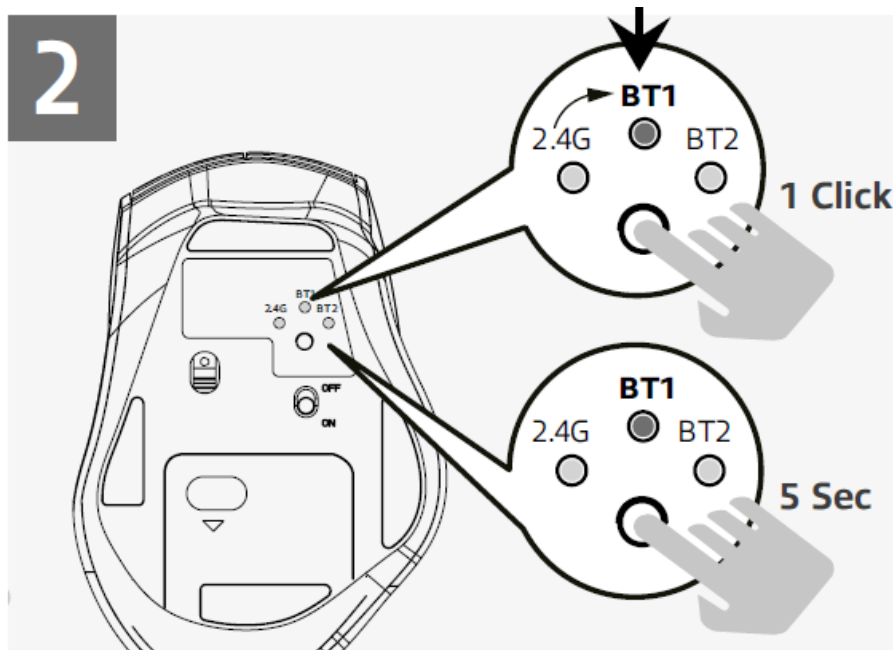
1. Toggle the switch to BT1 or BT2 for Bluetooth connectivity.
2. Go to your device's Bluetooth settings.
3. Select the mouse from the list of available devices to pair.
4. Once paired, you can start using the mouse wirelessly.

1

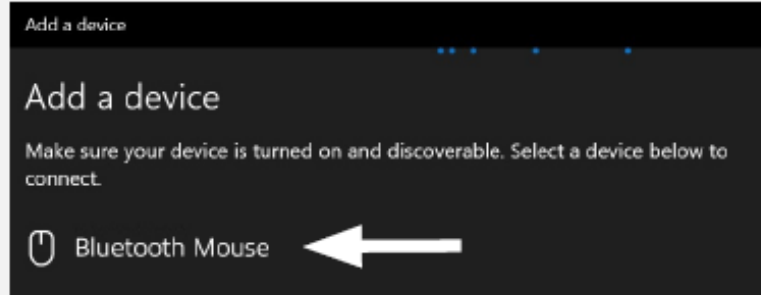
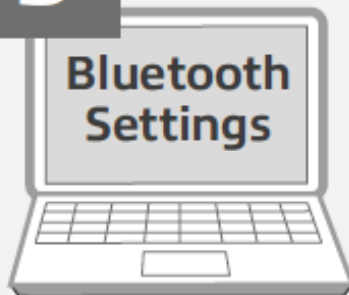
Option A: Bluetooth



2



3



4



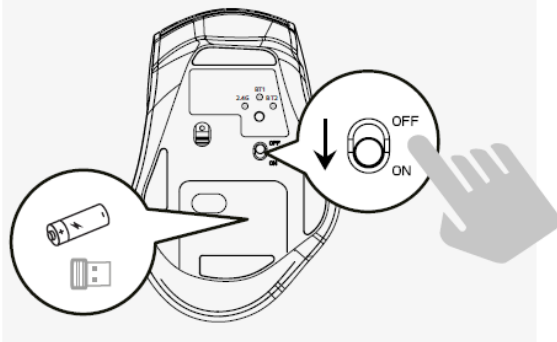
Bluetooth Mouse
Connected



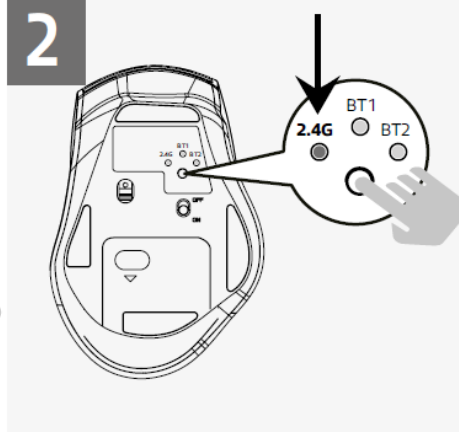
2.4 GHz Connection

1. Toggle the switch to BT1 or BT2 for 2.4 GHz connectivity.
2. Insert the USB receiver into your computer's USB port.
3. The mouse will automatically connect to the receiver.

1 Option B: 2.4 Ghz



2



3



Safety Instructions

- For PLUGGABLE EQUIPMENT, the socket-outlet shall be installed near the equipment and shall be easily accessible.
- You can find safety information at www.act-connectivity.com/safety
- For service, manuals, firmware or updates visit www.act-connectivity.com

Specification

- **Frequency Range** : 2403-2480MHz
- **RF output power** : +/- 0.50dB

Warranty

5 Year Warranty

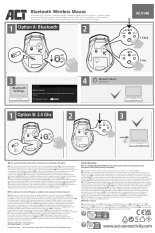
- ACT, Koolhovenstraat 1E,
- 3772 MT Barneveld,
- The Netherlands
- Made in China

www.act-connectivity.com

Frequently Asked Questions (FAQ)

- **Q: How do I switch between Bluetooth and 2.4 GHz modes?**
 - A: Toggle the switch to either BT1 or BT2 for Bluetooth mode, and for 2.4 GHz mode.
- **Q: Is this mouse compatible with all devices?**
 - A: The mouse is compatible with devices that support Bluetooth connectivity or have a USB port for the 2.4 GHz receiver.

Documents / Resources

	<p>ACT AC5146 Wireless Multi Connect Mouse [pdf] Instruction Manual AC5146, AC5146 Wireless Multi Connect Mouse, Wireless Multi Connect Mouse, Multi Connect Mouse, Connect Mouse, Mouse</p>
---	--

References

- [A Safety instructions | ACT](#)
- [Business Listing and Review Management | Connectivity](#)
- [A Home | ACT](#)
- [A Safety instructions | ACT](#)
- [User Manual](#)

[Manuals+](#), [Privacy Policy](#)

This website is an independent publication and is neither affiliated with nor endorsed by any of the trademark owners. The "Bluetooth®" word mark and logos are registered trademarks owned by Bluetooth SIG, Inc. The "Wi-Fi®" word mark and logos are registered trademarks owned by the Wi-Fi Alliance. Any use of these marks on this website does not imply any affiliation with or endorsement.