



# ACT AC4418 8 Port Gigabit Ethernet Switch Instructions

[Home](#) » [ACT](#) » ACT AC4418 8 Port Gigabit Ethernet Switch Instructions 

## Contents

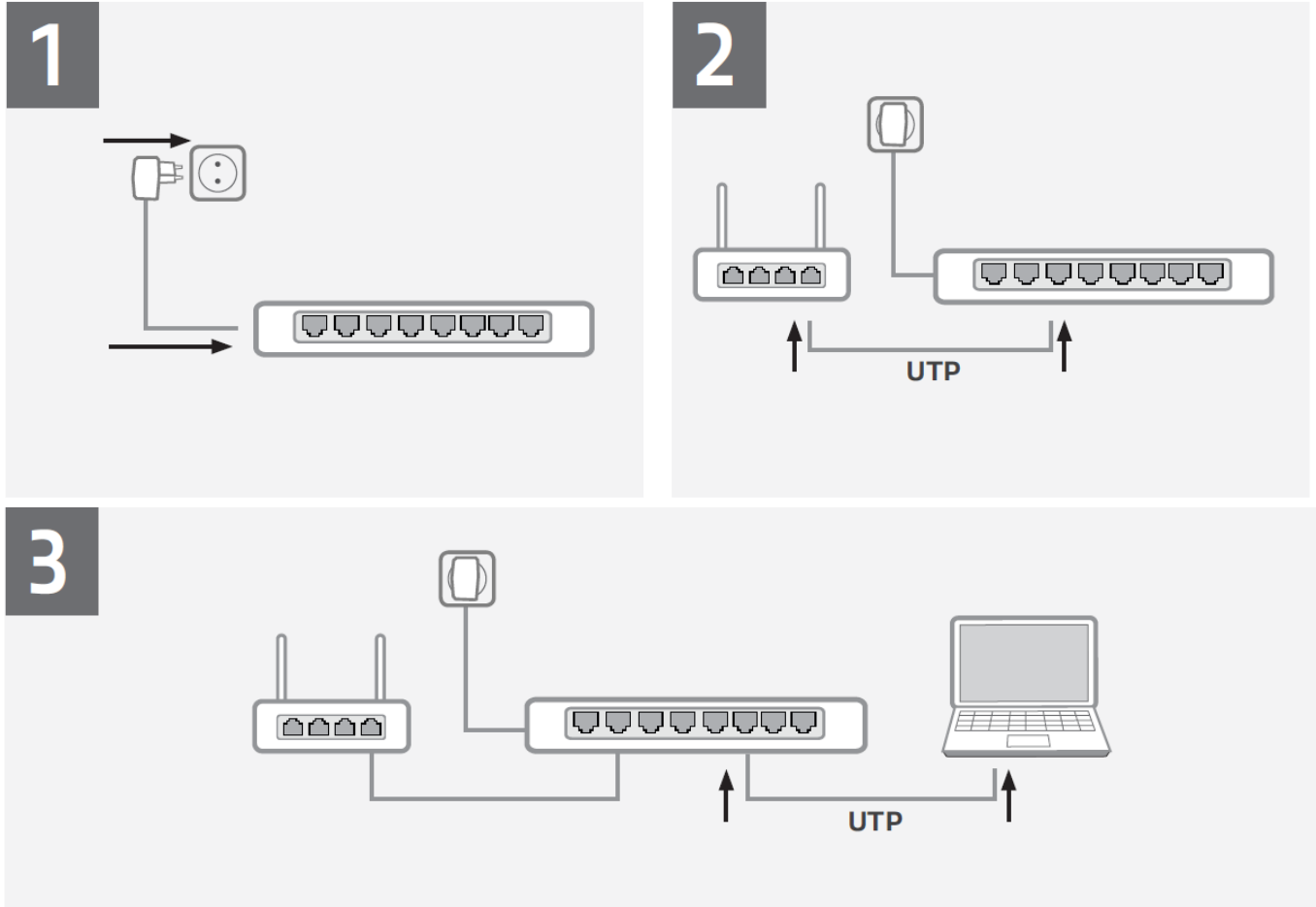
- [1 ACT AC4418 8 Port Gigabit Ethernet Switch](#)
- [2 INSTALLATION](#)
- [3 Safety Instruction](#)
- [4 Warranty](#)
- [5 Documents / Resources](#)
  - [5.1 References](#)
- [6 Related Posts](#)



## ACT AC4418 8 Port Gigabit Ethernet Switch



## INSTALLATION



You can find safety information at [www.act-connectivity.com/safety](http://www.act-connectivity.com/safety)  
For service, manuals, firmware or updates visit [www.act-connectivity.com](http://www.act-connectivity.com)

### Safety Instruction

For PLUGGABLE EQUIPMENT, the socket outlet shall be installed near the equipment and shall be easily accessible

Made in China

- **Input:** 100-240V~50/60Hz, 0.3A Max.
- **Output:** 5.0V 1.0A, 5.0W

THE PRODUCT MENTIONED BELOW IS COMPLIANT WITH THE NEW STANDARD FOR ERP CERTIFICATION (EU) 2019/1782 (SOMETIMES REFERRED TO AS ECO DESIGN) OF EXTERNAL POWER ISSUED BY THE EUROPEAN UNION, REPEALING COMMISSION REGULATION(EC) NO 278/2009 FROM 1 APRIL 2020.

	Value and precision	Unit
Model number	AC4418	–
Input voltage	100.0 – 240.0	V
Input frequency	50/60	Hz
Max. output voltage	5.0	V
Max. output current	1.0	A
Max. output power	5.0	W
Average active efficiency	75.5	%
Efficiency at low load (10%)	N/A	%
No-load power consumption	0.075	W

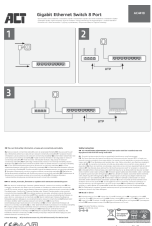
Manufacturer's name		<b>ACT</b> <b>Koolhovenstraat 1E</b> <b>3772 MT Barneveld</b> <b>The Netherlands</b>
Commercial registration		<b>K.v.K. 09068548</b>
Place and date of issue: Barneveld, 20 December 2022	Signature:	Name, function:  <b>Marc Swolfs, <i>Managing director</i></b>

## Warranty

- 5 Year Warranty

[www.act-connectivity.com](http://www.act-connectivity.com)

## Documents / Resources

	<p><a href="#">ACT AC4418 8 Port Gigabit Ethernet Switch</a> [pdf] Instructions  AC4418 8 Port Gigabit Ethernet Switch, AC4418, 8 Port Gigabit Ethernet Switch, Gigabit Ethernet Switch, Ethernet Switch, Switch</p>
---	--

## References

- [A Safety instructions | ACT](#)
- [Online Review & Business Listing Management | Connectivity](#)
- [A Home | ACT](#)
- [A Safety instructions | ACT](#)

Manuals+.