

ACT AC2420 Power Strip Cube with USB-C Power Delivery



# ACT AC2420 Power Strip Cube with USB-C Power Delivery Installation Guide

[Home](#) » [ACT](#) » ACT AC2420 Power Strip Cube with USB-C Power Delivery Installation Guide 

## Contents

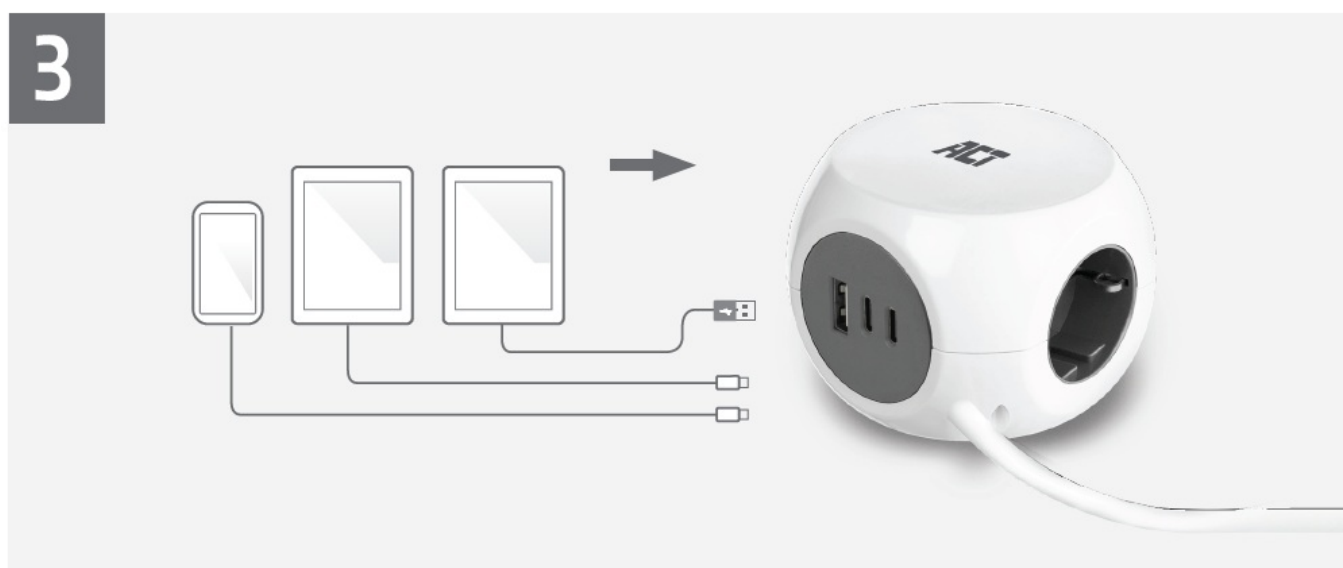
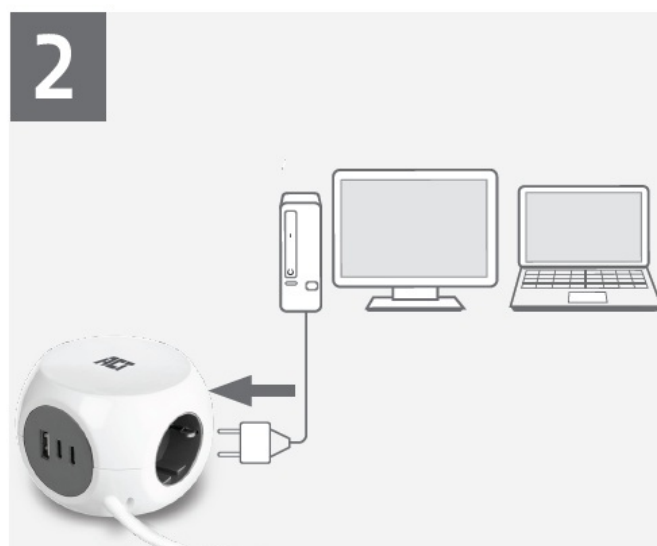
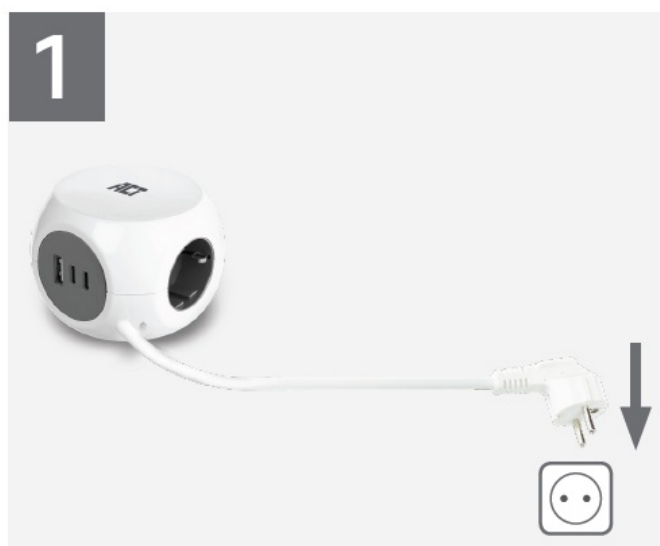
- [1 ACT AC2420 Power Strip Cube with USB-C Power Delivery](#)
- [2 Installation](#)
- [3 Safety Instruction](#)
- [4 Documents / Resources](#)
  - [4.1 References](#)

# ACT

**ACT AC2420 Power Strip Cube with USB-C Power Delivery**



## Installation



For service, manuals, firmware or updates visit [www.act-connectivity.com](http://www.act-connectivity.com)

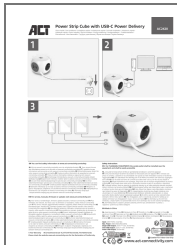
## 5 Year Warranty

## Safety Instruction

For PLUGGABLE EQUIPMENT, the socket-outlet shall be installed near the equipment and shall be easily accessible

- **Input:** 230V~50Hz, 0.2A Max.
- **Max. Power:** 3680.0Watt (16A/230V)
- **Single USB Output:** 20.0V 1.5A, 30.0W Max.
- **Total USB Output:** 20.0V 1.5A, 30.0W Max.
- **Power USB Output:** 30.0W Max.

## Documents / Resources



[ACT AC2420 Power Strip Cube with USB-C Power Delivery](#) [pdf] Installation Guide  
AC2420, AC2420 Power Strip Cube with USB-C Power Delivery, AC2420 Power Strip Cube, Power Strip Cube, Power Strip, Strip, Strip Cube, Power Strip Cube with USB-C Power Delivery

## References

- [A Safety instructions | ACT](#)
- [Business Listing and Review Management | Connectivity](#)
- [A Home | ACT](#)
- [A Safety instructions | ACT](#)
- [User Manual](#)

[Manuals+](#), [Privacy Policy](#)

This website is an independent publication and is neither affiliated with nor endorsed by any of the trademark owners. The "Bluetooth®" word mark and logos are registered trademarks owned by Bluetooth SIG, Inc. The "Wi-Fi®" word mark and logos are registered trademarks owned by the Wi-Fi Alliance. Any use of these marks on this website does not imply any affiliation with or endorsement.