



Acrox Technologies MU106 Wireless Multimedia Keyboard and Mouse with Nano Receiver User Guide

[Home](#) » [Acrox Technologies](#) » Acrox Technologies MU106 Wireless Multimedia Keyboard and Mouse with Nano Receiver User Guide 

Contents

- [1 Acrox Technologies MU106 Wireless Multimedia Keyboard and Mouse with Nano Receiver](#)
- [2 Functional Introduction](#)
- [3 Setup the Connection between the Receiver and the Mouse & Keyboard](#)
- [4 Documents / Resources](#)
- [5 Related Posts](#)

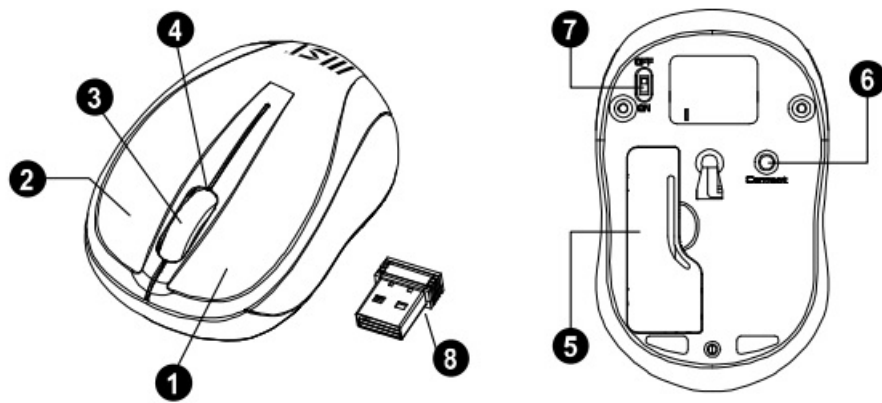


Acrox Technologies MU106 Wireless Multimedia Keyboard and Mouse with Nano Receiver



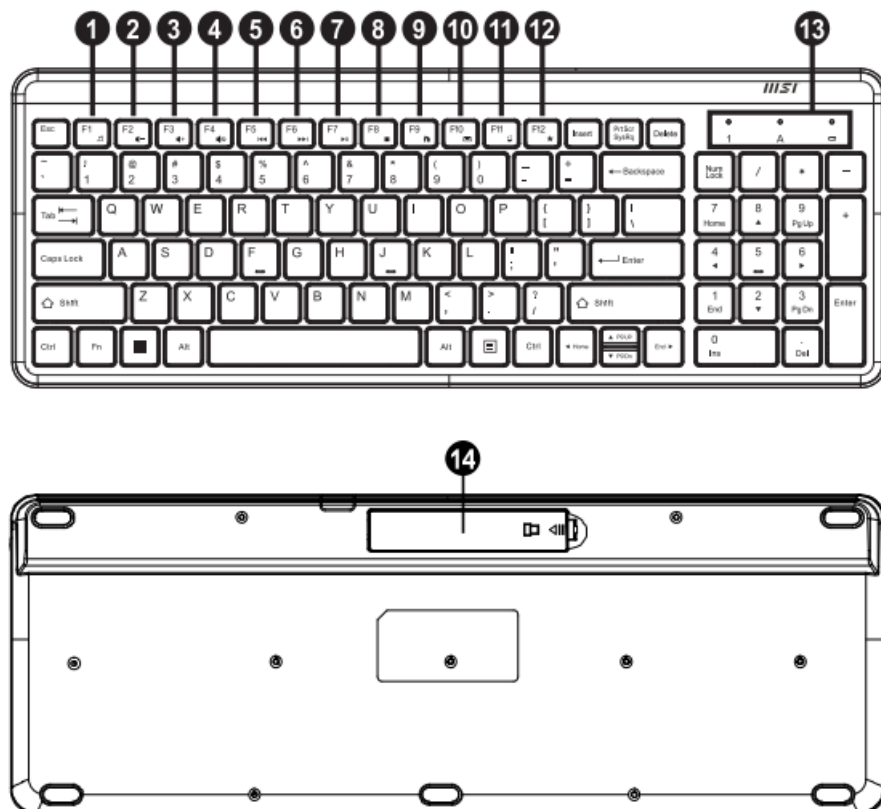
Functional Introduction

Mouse Buttons



1. Left Button
2. Battery Cover
3. Right Button
4. Connect Button
5. Scrolling Wheel
6. ON/OFF Switch
7. LED Indicator
8. Nano Receiver

Keyboard Buttons

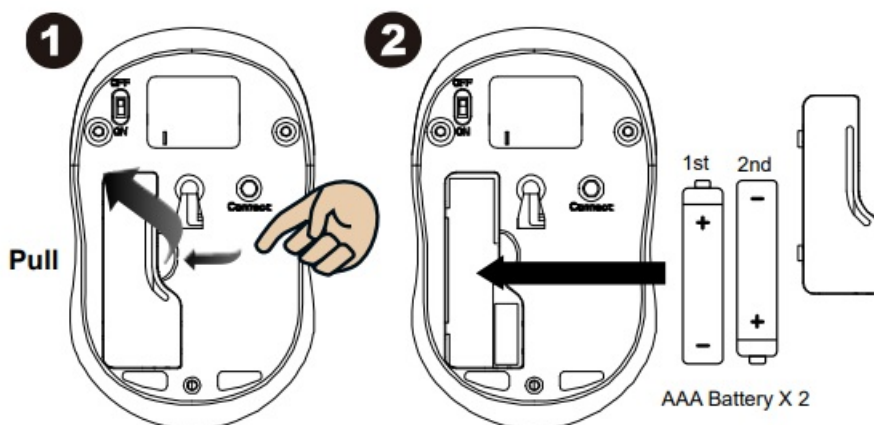


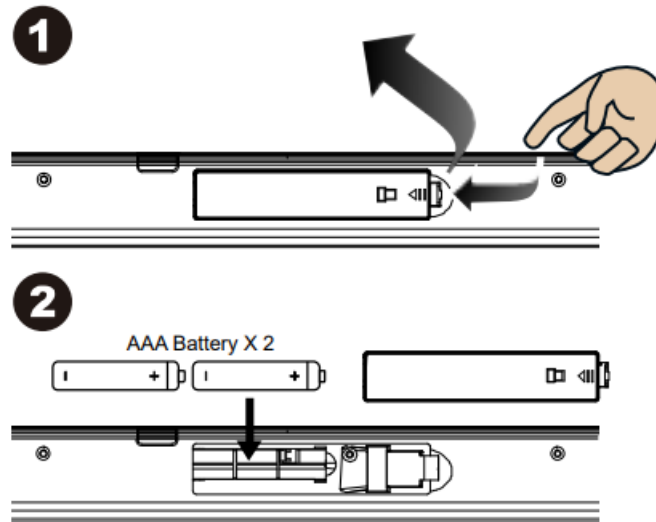
Key Function (* compound key, Press with Fn key)			
1.		Media Player On	Turn on the Media player program
2.		Volume down (Voice-)	Decrease the computer's sound volume.
3.		Volume up (Voice+)	Increase the computer's sound volume.
4.		Mute	Mute (turns off) the computer's sound
5.		Previous	Switch to the previous media track
6.		Next	Switch to the next media track
7.		Play/Pause	Switch between playing and pausing media
8.		Stop(Media)	Stop playing the media in the media player
9.		Homepage(www/e)	Start the default Web browser and loads the home Web page
10.		Outlook(E-mail)àDefault	Start the default e-mail program
11.		My Computer	Open My Computer/This PC folder.
12.		My Favorites	Open My Favorites folder within Internet browser application

13.		Number Lock Indicator
		Caps Lock Indicator
		Low Battery & Pairing Indicator
14.	Battery Cover	

Fn +	HOME
Fn +	END
Fn +	Pg UP
Fn +	Pg DN

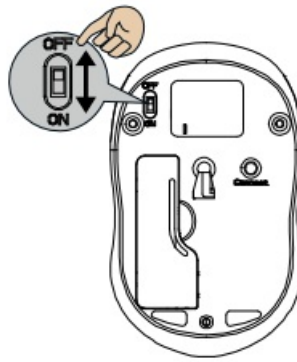
HIKVISION-DS-PDTPH-E-WB-Wireless-Temperature-Detector- FEATURED





Step 3: Replace the cover.

Step 4: Turn on power switch.

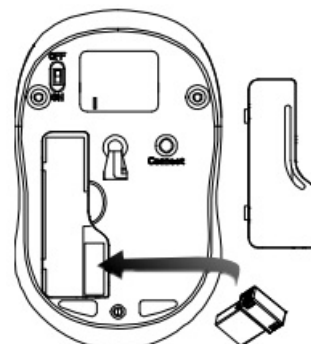


Warning:

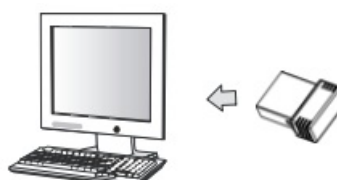
Please insert the battery with the correct position according to the instruction labeled on the mouse & Keyboard.

Setup the Connection between the Receiver and the Mouse & Keyboard

1. Remove the cover under the mouse & keyboard to access the battery and nano receiver compartment.
2. Insert batteries into the mouse & keyboard, and remove the nano receiver from the compartment. Place the covers back onto the devices.

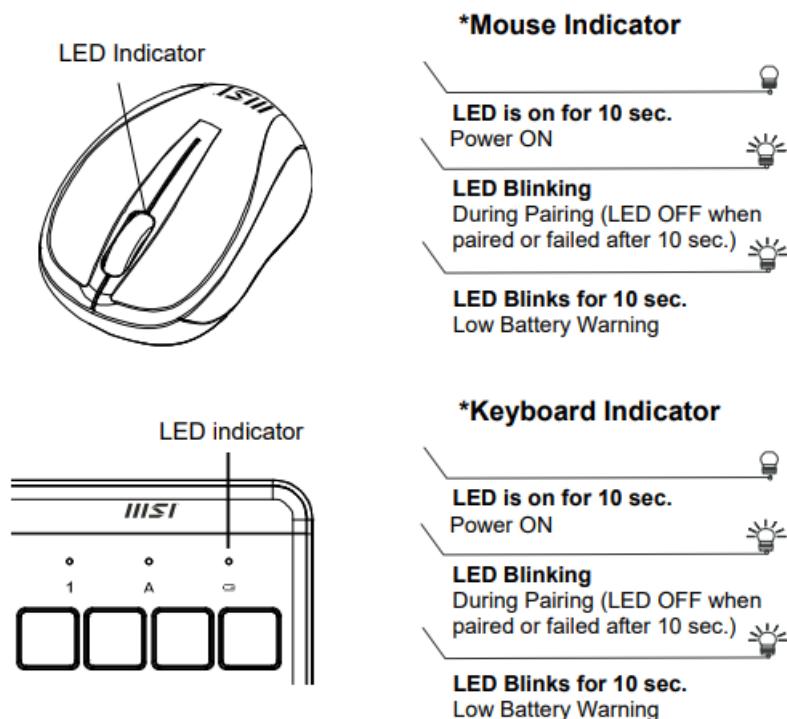


3. Plug the nano receiver into a USB port on your computer.




4. If the device does not work, please turn it into pairing mode.

5. Pairing: Re-plug the receiver into the USB port on your computer, then press connect button of the mouse, and press the key combination "ESC + K " on the keyboard. If the mouse or keyboard does not work after 10 seconds, pair them again.
6. The LED indicator on the mouse & Keyboard flashes steadily when it is in pairing mode and stops blinking when it is successfully paired with the receiver.
7. When the device has low battery, the battery indicator on the keyboard or the mouse will start to blink.



Documents / Resources

	<p>Acrox Technologies MU106 Wireless Multimedia Keyboard and Mouse with Nano Receiver [pdf] User Guide</p> <p>MU106, PRDMU106, MU106 Wireless Multimedia Keyboard and Mouse with Nano Receiver, MU106 Wireless Multimedia Keyboard and Mouse with Nano Receiver</p>
---	---