



Contents [[hide](#)]

- [1 ACR Bivy Mesh Stick Satellite Communicator](#)
- [2 Charge your device](#)
- [3 Download the app and setup your profile](#)
- [4 Connect to Bluetooth](#)
- [5 Setup Your SOS Profile](#)
- [6 Activate Your Bivy Stick MESH](#)
- [7 Signal Lights](#)
- [8 Status Lights](#)
- [9 Check-In & Tracking Button](#)
- [10 Mounting System](#)
- [11 Technical Specs](#)
- [12 SAFETY AND PRODUCT INFORMATION USAGE REQUIREMENTS](#)
- [13 WARRANTY](#)
- [14 FCC INFORMATION](#)
- [15 FAQ](#)
- [16 Documents / Resources](#)
 - [16.1 References](#)

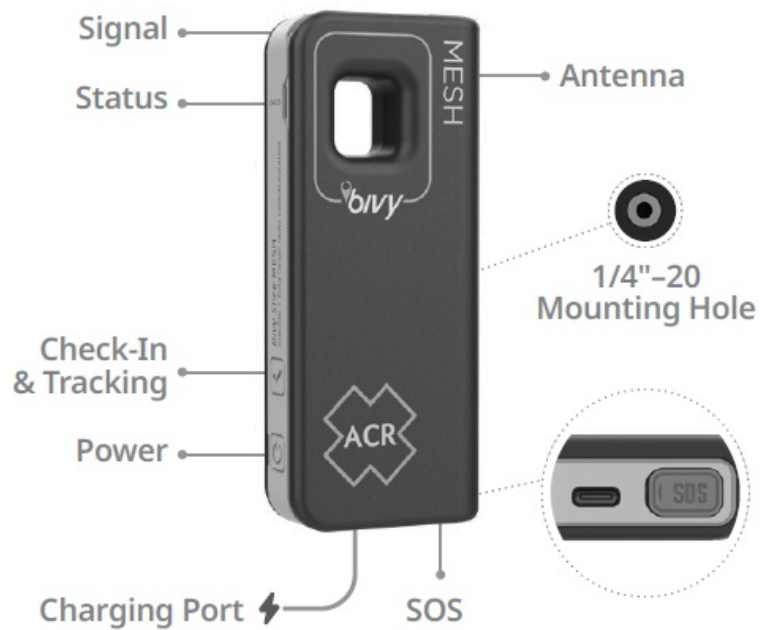


ACR Bivy Mesh Stick Satellite Communicator



Let's get started!

Get to know your Bivy Stick MESH



Visit support.bivy.com for a detailed user guide on both the Bivy Stick MESH and the Bivy App

Charge your device

Use the supplied USB-C cable





WARNING

Applying a voltage higher than 5V may damage the device.



Power & Charging Indicator Light

-  Flashing: Device is charging
-  Solid: Device is powered on



Red
(0 – 20%)



Yellow
(20 – 50%)



Green
(50 – 99%)



Solid Green
(100%)

Download the app and setup your profile



Connect to Bluetooth

1. Power on the device



- **On/Off:** Press & Hold Power Button 2-Seconds
- **Bluetooth Pairing Mode:** Single press to wake device and activate Bluetooth pairing mode for 3 minutes.

2. In the Bivy App, navigate to the STICK tab and connect



Not Connected Connect

Setup Your SOS Profile

Enter Your Emergency Contacts

Your emergency contacts will be notified by the Rescue Center when SOS has been activated.

Critical Warning!

Please create SOS profile now! Setup SOS Profile

Activate Your Bivy Stick MESH

1. Press Activate
2. Choose a plan and follow the instructions

Account Inactive Activate

SOS

In case of emergency you can activate an SOS using the Bivy app or with the SOS button on the device. It is recommended to use the app to establish 2-Way communication with the Rescue Center. The SOS button is located under the red flap on the bottom of the device.




- **Activate:** Press and hold for 5 seconds.
- **Cancel:** Press and hold for 5 seconds.

Once the SOS is activated, the status light will begin to flash red and an emergency message will be sent to the Rescue Center, along with your location, once per minute for 10 minutes, and then every 10 minutes thereafter. It will also flash yellow initially letting you know that a message is queued up to be sent. Once the red light stops flashing, the SOS has been canceled. The Rescue Center will dispatch and manage all the emergency needs and resources necessary. This service is available worldwide.

Signal Lights

-  WAKE MODE SIGNAL LIGHT ON

- 
 - Green: Strong Satellite Yellow: Medium Satellite
 - Red: Weak to no satellite Off: Sleep mode

-  SLEEP MODE SIGNAL LIGHT OFF Single press power button to wake device for 3-minutes

Note: The Stick listens for incoming messages for 15 minutes after sending one. It then goes into sleep mode but wakes every 15 minutes to check messages.

Status Lights



- Green: New Message in Mailbox (Connect to the Bivy App to view message).
- Yellow: Sending (Message or Track point).

Note: A persistent flashing yellow light indicates a message is trying to send. Relocate to an open sky view and wait for satellite connection.

- Blue: Bivy Stick Tracking Mode
- Active Red: SOS Active

Check-In & Tracking Button

Sending Check-In Messages

The Bivy Stick transmits your preset message, current GPS location, and a map link to your selected contacts.

Checking in. All good. [37.733952, -119.637756] www.bivygate.com/353NJ

1. To send a Check-In message, press the Check-In button once.



Note: To personalize this message, use the Bivy app.

2. The STATUS light will flash YELLOW and stop flashing when the message is sent.

Tracking With the Bivy Stick

Your GPS location is updated at regular intervals on your Bivy Live Tracking Page, which is accessible via a shared unique URL.

- 10 min (1 credit per 1 hour) – Default
- 2 min (1 credit per 12 mins)
- 5 min (1 credit per 30 mins)
- 10 min (1 credit per 1 hour)
- 30 min (1 credit per 3 hours)

- 60 min (1 credit per 6 hours)

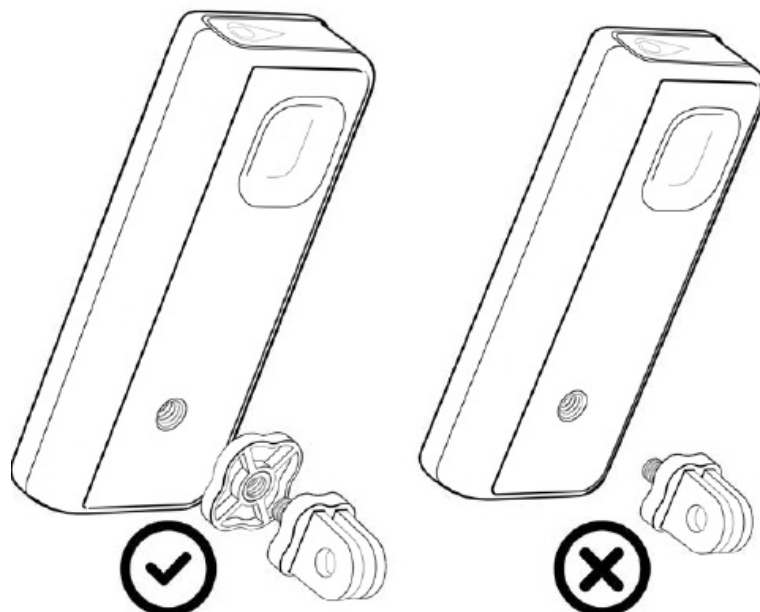
1. To start tracking, press and hold the CHECK-IN button for 5-seconds until the STATUS light flashes BLUE.
2. The STATUS light continuously flashes BLUE while in tracking mode.
Note: Tracking with the Bivy Stick uses the built-in GPS. If tracking is initiated via the app, the map will use the phone's GPS.
3. To stop tracking, hold Check-In button for 5 seconds until the STATUS light stops flashing BLUE.
4. After you stop tracking, keep the Bivy Stick out in the open, facing the sky. Wait until the yellow STATUS light stops flashing to make sure all your location data is sent.

Mounting System

The Bivy Stick comes ready to adapt to any GoPro® mounting system. This is done by using the provided ¼" – 20, 2-prong GoPro® mount adapter. Thread the adapter into the back of the Bivy Stick, then attach to the GoPro® mounting system of your choice.

WARNING

If attaching to the outside of a vehicle or location that may see high wind speeds, vibrations or force, you should use a secondary tether to ensure you do not lose or damage your Bivy Stick.



the maker of this product and does not endorse this product.

Technical Specs

- Dimensions: 11.4 cm x 4.8 cm x 2.1 cm (4.49" x 1.89" x 0.83")
- Weight: 3.95 oz / 112 g
- Ingress Protection Rating: IP67
- Battery Type: Lithium Ion Polymer
- Battery Size: 1450 mAh
- Battery Life: Up to 145 hrs standard operation at default setting (Satellite Only)
- Optimal Operating Temperature: -20°C to 40°C

SAFETY AND PRODUCT INFORMATION USAGE REQUIREMENTS

- Messaging, tracking, SOS, weather and all Bivy Stick features require an active Bivy Stick data plan. You will need to pay for a plan of service in order for your Bivy Stick to communicate with the satellite network. Always test your device before taking it off grid.
- Ensure that you have clear view of the sky when using messaging, tracking and SOS.
- Battery Warning and Notices: A lithium-ion polymer battery is used in this device. The battery is internal and non-user-replaceable for various purposes. If these guidelines are not followed, batteries may experience a shortened life span or may present a risk of damage to the device, fire, chemical burn, electrolyte leak, and/or injury. Also, failure to heed the following notice could result in personal or property damage, or negatively impact the device functionality.
- Do not disassemble, modify, re-manufacture, puncture or damage device or battery.
- Do not remove or attempt to remove any components of the device.
- Do not expose device to fire, explosions, high temperatures or other hazards.
- Do not place in high temperature environments. Such as an unattended vehicle, near a heater, or fire, or in direct sunlight for extended periods of time.
- Do not submerge or soak device in any liquid.
- Do not operate device outside of the recommended temperature ranges.
- When storing the device for extended periods of time, store in a dry environment in temperatures between 35F and 75F.

- Do not use a power/data cable that is not approved or supplied by Bivy.
- Do not place device on dashboard or any other unsecured place in vehicle. Also be sure that it is not located someplace that will be a distraction while operating a vehicle. In the case of accident or crash, an unsecured device could injure driver or passenger.
- Do not use the Bivy Stick MESH or Bivy app while driving. Always stop and park vehicle before using cell phone or app.
- Bivy uses maps provided by public and private sources and is not responsible for the accuracy of the map. Some data may be inaccurate and incomplete.
- By using the device you agree to the terms and conditions of the user agreement. To review those terms please visit: <https://www.bivy.com/terms>
- By using the device you also agree to the terms and conditions of the privacy policy. To review those please visit: <https://www.bivy.com/privacy>
- If disposing of the device, please do so in accordance with local regulations according to Lithium Ion Polymer battery disposal.
- The Bivy Stick MESH is a mobile transmitter and receiver that uses an internal antenna to send and receive low levels of radio frequency energy for data communications. The device emits RF energy below the published limits when operating in its maximum output power mode. To comply with RF exposure compliance requirements, the device should be a minimum of 20cm between the device and your body during operation. The device should not be used in other configurations. This device must not be co-located or operated in conjunction with any other transmitter or antenna.

WARNING: This product can expose you to chemicals including Di(2-ethylhexyl) phthalate (DEHP), which are known to the State of California to cause cancer and birth defects or other reproductive harm. For more information go to www.P65Warnings.ca.gov

WARRANTY

Available at www.bivy.com/warranty. Or request via mail or phone:

- ACR Electronics, Inc., 5757 Ravenswood Road, Fort Lauderdale, FL 33312, USA.
+1.954.981.3333

DECLARATION OF CONFORMITY

Hereby, ACR Bivy declares that this product is in compliance with the Directive 2014/53/EU. The full text of the EU declaration of conformity is available at the following Internet address: www.acrartex.com

UK DECLARATION OF CONFORMITY

Hereby, ACR Bivy declares that this product is in compliance with the relevant statutory requirements. The full text of the declaration of conformity is available at the following Internet address: www.acrartex.com

RADIO FREQUENCY RADIATION EXPOSURE

This device is a portable transmitter and receiver that uses an internal antenna to send and receive low levels of radio frequency (RF) energy for data communications. The device emits RF energy below the published limits for portable use when operating in its maximum output power mode and when used with ACR Bivy authorized accessories. To comply with RF exposure compliance requirements, the device should be used as described in the manual. The device should not be used in other configurations.

FCC INFORMATION

This device complies with part 15 of the FCC Rules. Operation is subject to the following two conditions:

1. This device may not cause harmful interference, and
2. This device must accept any interference received, including interference that may cause undesired operation.

This device has been tested and found to comply with the limits for a Class B digital device, pursuant to part 15 of the FCC rules. These limits are designed to provide reasonable protection against harmful interference in a residential installation. This device generates, uses, and can radiate radio frequency energy and may cause harmful interference to radio communications if not installed and used in accordance with the instructions. However, there is no guarantee that interference will not occur in a particular installation. If this device does cause harmful interference to radio or television reception, which can be determined by turning the device off and on, the user is

encouraged to try to correct the interference by one of the following measures:

- Reorient or relocate the receiving antenna.
- Increase the separation between the device and the receiver.
- Connect the equipment into an outlet on a circuit different from that to which the receiver is connected.
- Consult dealer or an experienced radio/TV technician for help.

This device does not contain any user-serviceable parts. Repairs should only be made by Bivy or an ACR authorized service center. Unauthorized repairs or modifications could result in permanent damage to the device, and void your warranty and your authority to operate this device under part 15 regulations. Bivy is an ACR company.

INNOVATION, SCIENCE AND ECONOMIC DEVELOPMENT CANADA COMPLIANCE

This device contains license-exempt transmitter(s)/ receiver(s) that comply with Innovation, Science and Economic Development Canada's license-exempt RSS(s). Operation is subject to the following two conditions:

AUSTRALIAN AND NEW ZEALAND PURCHASED GOODS

ACR Bivy goods and services come with guarantees that cannot be excluded under the Australian Consumer Law and similar legislation in New Zealand. For major failures with the service, you are entitled:

- to cancel your service contract with us; and
- to a refund for the unused portion, or to compensation for its reduced value. You are also entitled to choose a refund or replacement for major failures with goods. If a failure with the goods or service does not amount to a major failure, you are entitled to have the failure rectified in a reasonable time. If this is not done, you are entitled to a refund for the goods and to cancel the contract for the service and obtain a refund of any unused portion. You are also entitled to be compensated for any other reasonably foreseeable loss or damage from a failure in the goods or service.

ACR Electronics, Inc., 5757 Ravenswood Road, Fort Lauderdale, FL 33312, USA.
+1.954.981.3333

Customer Support

Have Questions? Visit support.bivy.com for how-to videos, user guides, FAQs, and more.

Customer Service Hours

- Monday – Friday, 6:00 AM – 9:00 PM MST
- support@bivy.com
- +1 [385-955-0998](tel:385-955-0998) (Call or Text)
- support.bivy.com

www.bivy.com

MADE IN USA



FCC ID: B66-ACRBV3



IC: 1322A-ACRBV3 MADE IN USA

FAQ

- **Q: How do I activate an SOS on the Bivy Stick MESH?**

A: In case of emergency, you can activate an SOS using the Bivy app or with the SOS button on the device. It is recommended to use the app for 2-way communication with the Rescue Center. Press and hold the SOS button for 5 seconds to activate.

- **Q: What do the signal status lights indicate?**

A: Green indicates a strong satellite signal, yellow indicates a medium signal, red indicates weak to no satellite signal, and off signifies sleep mode.

Documents / Resources

	ACR Bivy Mesh Stick Satellite Communicator [pdf] User Guide Bivy, Bivy Mesh Stick Satellite Communicator, Mesh Stick Satellite Comm unicator, Stick Satellite Communicator, Satellite Communicator
--	--

References

- [🌐 Proposition 65 Warnings Website - Your right to know](#)
- [✳️ support.bivy.com](#)
- [✳️ Home - ACR Electronics, Inc](#)
- [✳️ Find Adventures Near You, Track Your Progress, Share](#)
- [🌐 bivygate.com/353NJ](#)
- [🌐 P65Warnings.ca.gov](#)
- [✳️ Find Adventures Near You, Track Your Progress, Share](#)
- [✳️ Find Adventures Near You, Track Your Progress, Share](#)
- [User Manual](#)

📁 ACR

🔍 ACR, BIVY, Bivy Mesh Stick Satellite Communicator, Mesh Stick Satellite Communicator, Satellite Communicator, Stick Satellite Communicator

—Previous Post

[ACR BSBCRT301 Develop And Extend Critical And Creative Thinking Skills User Guide](#)

Leave a comment

Your email address will not be published. Required fields are marked *

Comment *

Name

Email

Website

☐ Save my name, email, and website in this browser for the next time I comment.

Post Comment

Search:

e.g. whirlpool wrf535swhz

Search

[Manuals+](#) | [Upload](#) | [Deep Search](#) | [Privacy Policy](#) | [@manuals.plus](#) | [YouTube](#)

This website is an independent publication and is neither affiliated with nor endorsed by any of the trademark owners. The "Bluetooth®" word mark and logos are registered trademarks owned by Bluetooth SIG, Inc. The "Wi-Fi®" word mark and logos are registered trademarks owned by the Wi-Fi Alliance. Any use of these marks on this website does not imply any affiliation with or endorsement.