



[Home](#) » [acquire](#) » **acquire Digital Wayfinder Solutions Installation Guide** 



INSTALLATION GUIDE

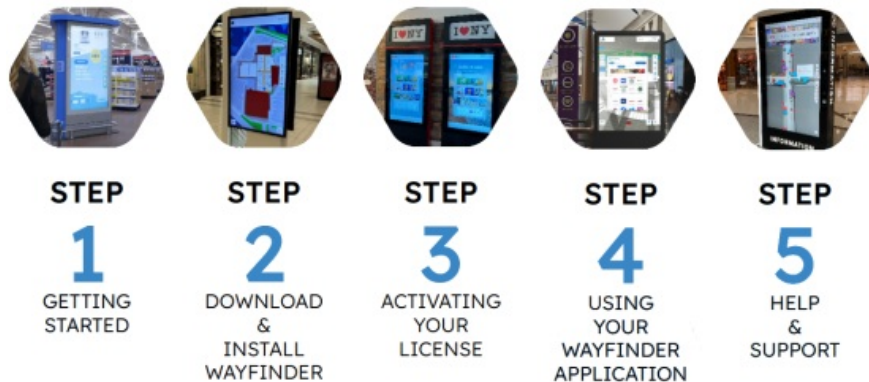
Contents [[hide](#)]

- [1 Digital Wayfinder Solutions](#)
- [2 GETTING STARTED](#)
- [3 DOWNLOAD & INSTALL WAYFINDER](#)
- [4 ACTIVATING YOUR LICENSE](#)
- [5 USING ACQUIRE WAYFINDER](#)
- [6 HELP & SUPPORT](#)
- [7 Documents / Resources](#)
 - [7.1 References](#)

Digital Wayfinder Solutions

NAVIGATE WITH CONFIDENCE

UNLOCK THE POWER OF SMART NAVIGATION WITH A FREE TRIAL OF ACQUIRE WAYFINDER. DESIGNED TO IMPROVE VISITOR EXPERIENCES IN CAMPUSES, RETAIL SPACES, HEALTHCARE FACILITIES, AND TRANSPORT HUBS, ACQUIRE WAYFINDER ENSURES SEAMLESS WAYFINDING WITH INTUITIVE, INTERACTIVE MAPS.



GETTING STARTED

BY NOW YOU SHOULD HAVE RECEIVED YOUR EMAIL CONTAINING ALL THE RELEVANT

LICENSING AND DOWNLOAD LINKS TO YOUR ACQUIRE WAYFINDER SOFTWARE. IF YOU'VE NOT RECEIVED THIS, OR YOU'RE EXPERIENCING ANY ISSUES, CLICK THE

LINK BELOW, OR SCAN THE QR CODE TO REQUEST YOUR LICENSES.

[DOWNLOAD WAYFINDER HERE](#)



TO GET YOU STARTED, HERE'S A BRIEF SUMMARY HARDWARE REQUIREMENTS TO GET YOU UP AND RUNNING SMOOTHLY.

OPERATING SYSTEM: WINDOWS 10/11

Windows LTSC/IOT version is designAlternatively,ice usage rather than desktop versions and is preferred in these instances

CPU: INTEL I5 OR EQUIVALENT

Windows LTSC/IOT version is designed for edge usage rather than desktop versions and is preferred in these instances

GPU: INTEL ONBOARD OR EQUIVALENT (MINIMUM), DISCREET GRAPHICS INTEL ARC OR NVIDIA (RECOMMENDED)

Graphics capabilities are the most important consideration for more complex usage; allowing for higher resolutions/bitrates and outputs

HARD DRIVE: SOLID STATE DRIVE (MINIMUM), M.2 DRIVE WITH NVMe OR RAID (PREFERRED)

Drive should be capable of providing read speeds exceeding the maximum bitrate of all your simultaneous playback plus OS usage

NETWORK: 4G / WiFi / LAN (PREFERRED)

Content is cached locally. Control messages and updates are sent as background traffic using UDP or TCP connection

THESE REQUIREMENTS ARE GENERAL AND YOU SHOULD ALWAYS TEST YOUR EXPECTED MEDIA WITH ANY HARDWARE YOU ARE CONSIDERING FOR A PROJECT. WE PROVIDE A FULLY FEATURED TRIAL VERSION OF OUR SOFTWARE.

ALTERNATIVELY, WE CAN ASSIST IN CONSULTING FOR YOUR PROJECT, INCLUDING SPECIFYING APPROPRIATE HARDWARE.

DOWNLOAD & INSTALL WAYFINDER

ONCE YOU'VE RECEIVED YOUR DOWNLOAD LINK – CLICK THIS TO ACCESS OUR DEDICATED STUDIOPRO DOWNLOAD PAGE.

Welcome,

Thanks for trying Acquire Wayfinder. We're thrilled to have you on board. To get started:

[Download Your Trial](#)

Your trial licence will last 30 days.

Trial Start Date: Monday 10th of March 2025

Trial End Date: Thursday 10th of April 2025

If you have any questions, or need to extend your trial, feel free to reach out to our [customer success team](#).

Thanks,
The Acquire Digital Team

DOWNLOAD THE SOFTWARE – ‘DOWNLOAD ACQUIRE WAYFINDER’ TO
DOWNLOAD THE SOFTWARE PACKAGE.

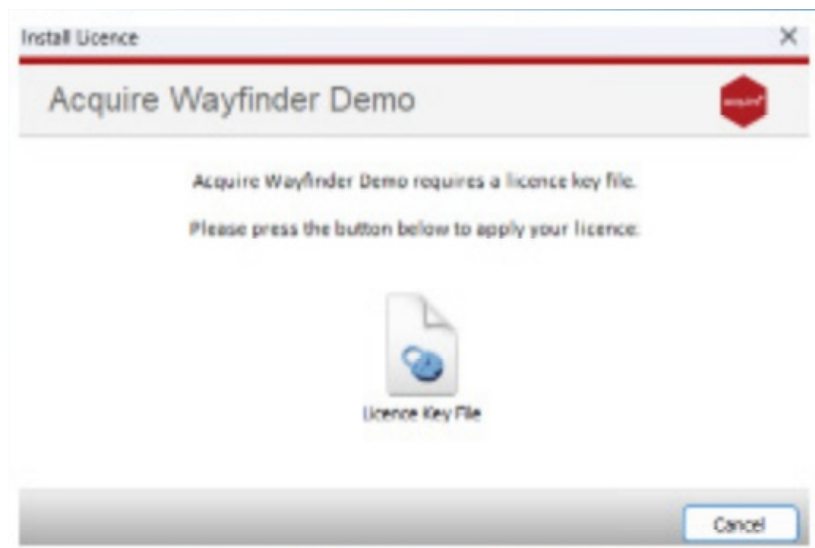


INSTALL THE SOFTWARE – RUN THE ACQUIRE WAYFINDER INSTALLER ON YOUR
DEDICATED PC OR LAPTOP, ACCEPT THE LICENSE AGREEMENT, AND FOLLOW
THE ON-SCREEN WIZARD.

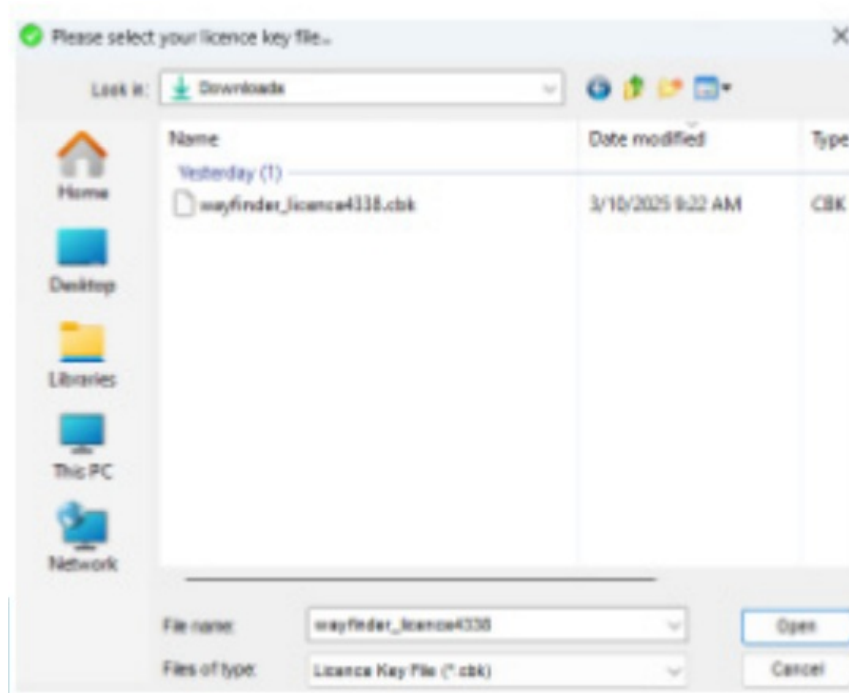
ACTIVATING YOUR LICENSE

GETTING YOUR EDITOR LICENSE – ‘DOWNLOAD TRIAL LICENSE KEY’ TO
DOWNLOAD YOUR UNIQUE LICENSE FILE.

ONCE INSTALLATION IS COMPLETE, CLICK ‘LICENSE KEY FILE’ TO OPEN THE
ACTIVATION WINDOW.



NAVIGATE TO WHERE YOU DOWNLOADED YOUR LICENSE FILE AND SELECT 'OPEN'.



CHOOSE FROM THREE ACTIVATION METHODS:

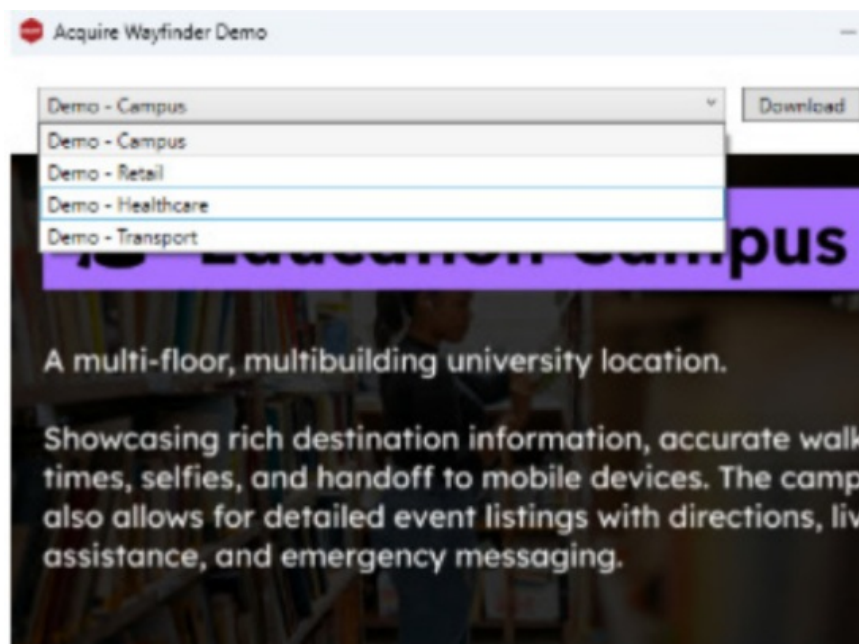
RECOMMENDED: AUTOMATICALLY OVER THE INTERNET – THE FASTEST AND EASIEST WAY TO ACTIVATE.



ONCE ACTIVATED, A MESSAGE WILL APPEAR, 'YOUR SOFTWARE HAS NOW BEEN ACTIVATED' CLICK 'OK' AND 'FINISH' TO COMPLETE THE SETUP.

USING ACQUIRE WAYFINDER

WHEN THE APPLICATION OPENS, SELECT THE DEMO YOU WANT TO DOWNLOAD. THERE ARE FOUR DEMO PROJECTS AVAILABLE:

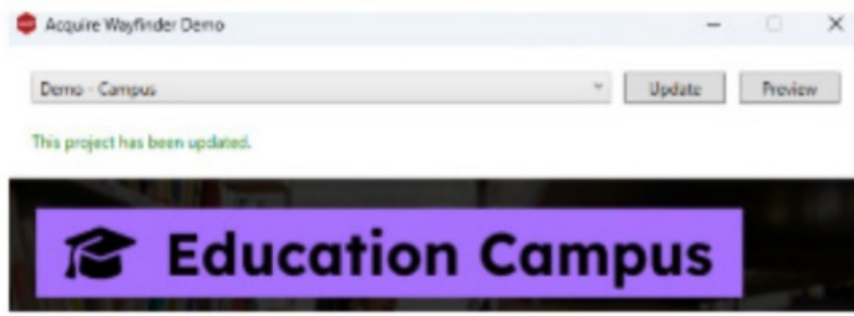


SELECT THE PROJECT YOU WANT FROM THE DROPDOWN MENU AND CLICK DOWNLOAD.

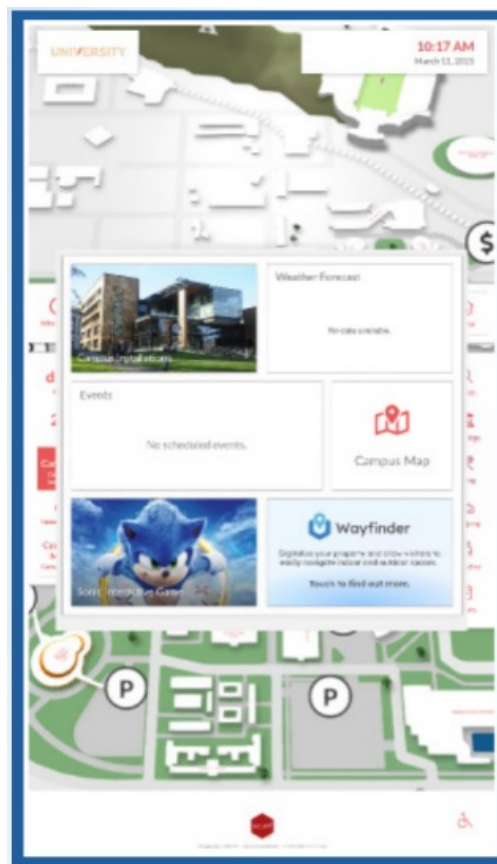
ONCE THE DEMO HAS FINISHED DOWNLOADING, 'PREVIEW' WILL NOW BECOME

ACTIVE.

SELECTING THIS WILL START UP THE DEMO.



YOU WILL NOW SEE THE HOME SCREEN AND BY SELECTING THE CAMPUS MAP YOU WILL BE ABLE TO NOW INTERACT WITH THE MAP.



TAPPING THE CORNERS OF THE DEMO IN THE FOLLOWING ORDER WILL ALLOW YOU TO EXIT

BOTTOM LEFT , TOP LEFT, BOTTOM RIGHT, TOP RIGHT

HELP & SUPPORT

WE HOPE YOU'VE GOT YOUR ACQUIRE WAYFINDER SET UP SMOOTHLY! BUT IF ANYTHING DIDN'T GO AS PLANNED, NO WORRIES—WE'RE HERE TO HELP. IF YOU NEED ANY SUPPORT DURING INSTALLATION OR WHILE USING WAYFINDER, FEEL FREE TO REACH OUT TO US BY EMAIL TO THE BELOW

ADDRESS, VISIT OUR KNOWLEDGE BASE TO ANSWER MANY COMMONLY ASKED QUESTIONS AND VIEW THE USER GUIDE





EMAIL: SUPPORT@ACQUIREDIGITAL.COM

[KB WAYFINDER LINK](#)

IF YOU'VE GOT ANY FURTHER PROJECTS THAT REQUIRE WAYFINDER, OR YOU REQUIRE ADDITIONAL LICENSES, PLEASE REACH OUT TO OUR DEDICATED EXPERTS, WHO CAN TALK TO YOU IN GREATER DETAIL ABOUT YOUR REQUIREMENTS.

EMAIL: CUSTOMERSALES@ACQUIREDIGITAL.COM

WHY CHOOSE ACQUIRE WAYFINDER?

-  SEAMLESS NAVIGATION WITH INTUITIVE 3D MAPS & LANDMARK RECOGNITION
-  EFFICIENT SPACE MANAGEMENT WITH OPTIMISED DIGITAL DIRECTORIES
-  INTERGRATED ADVERTISING CAPABILITIES FOR ADDITIONAL REVENUE GENERATION
-  COMPLIANCE WITH ACCESSIBILITY STANDARDS FOR INCLUSIVE NAVIGATION



ACQUIRE DIGITAL

UK OFFICE: 190 SCUDAMORE ROAD, LEICESTER, LE3 1UQ

US OFFICE: ONE BOSTON PLACE, SUITE 2600, BOSTON, MA, 02108

Documents / Resources



[acquire Digital Wayfinder Solutions \[pdf\]](#) Installation Guide

Digital Wayfinder Solutions, Wayfinder Solutions, Solutions

References

- [User Manual](#)

acquire, Digital Wayfinder Solutions, Solutions, Wayfinder

acquire Solutions

Leave a comment

Your email address will not be published. Required fields are marked *

Comment *

Name

Email

Website

☐ Save my name, email, and website in this browser for the next time I comment.

Post Comment

Search:

e.g. whirlpool wrf535swhz

Search

[Manuals+](#) | [Upload](#) | [Deep Search](#) | [Privacy Policy](#) | [@manuals.plus](#) | [YouTube](#)

This website is an independent publication and is neither affiliated with nor endorsed by any of the trademark owners. The "Bluetooth®" word mark and logos are registered trademarks owned by Bluetooth SIG, Inc. The "Wi-Fi®" word mark and logos are registered trademarks owned by the Wi-Fi Alliance. Any use of these marks on this website does not imply any affiliation with or endorsement.