



**OmniCycle
Elite A000-533
Advanced
Active Assist
Cycle**



ACP OmniCycle Elite A000-533 Advanced Active Assist Cycle Instruction Manual

[Home](#) » [ACP](#) » ACP OmniCycle Elite A000-533 Advanced Active Assist Cycle Instruction Manual 

Contents

- [1 ACP OmniCycle Elite A000-533 Advanced Active Assist Cycle](#)
- [2 Product Usage Instructions](#)
- [3 Packaging With OEM Box](#)
- [4 Packaging With ACP Box](#)
- [5 FAQs](#)
- [6 Documents / Resources](#)
 - [6.1 References](#)



ACP OmniCycle Elite A000-533 Advanced Active Assist Cycle



Product Specifications

- Product Name: OmniCycle Elite A000-533
- Manufacturer: Accelerated Care Plus
- Model Number: A000-533
- Dimensions: 24" x 36" x 18"
- Weight: 50 lbs

Product Usage Instructions

Packaging Instructions

Follow the steps below to properly package the OmniCycle Elite for shipping:

Packaging With OEM Box

1. All necessary packaging components are required, including the OmniCycle Box, front support cardboard piece, two side support cardboard pieces, an extra empty box for the terminal being sent, middle support cardboard piece, envelope, packing instructions, calibration certificate, and user manual.
2. In the bottom of the box, there is a foam tray with cutouts designed to fit the bottom of the OmniCycle.
3. Place the OmniCycle box on its side with the large foam cutout facing up.
4. Wheel the OmniCycle into the box and lift the box to an upright position.
5. Place the side support cardboard piece over the extremity arm in the up position.
6. Place the second side support cardboard piece over the upper extremity arm in the down position.
7. Fold item #6 into a triangle and place it between the OmniCycle and the side wall of the box.
8. Place the front support cardboard piece directly in front of the side support pieces.

Packaging Instructions OmniCycle Elite

A000-533

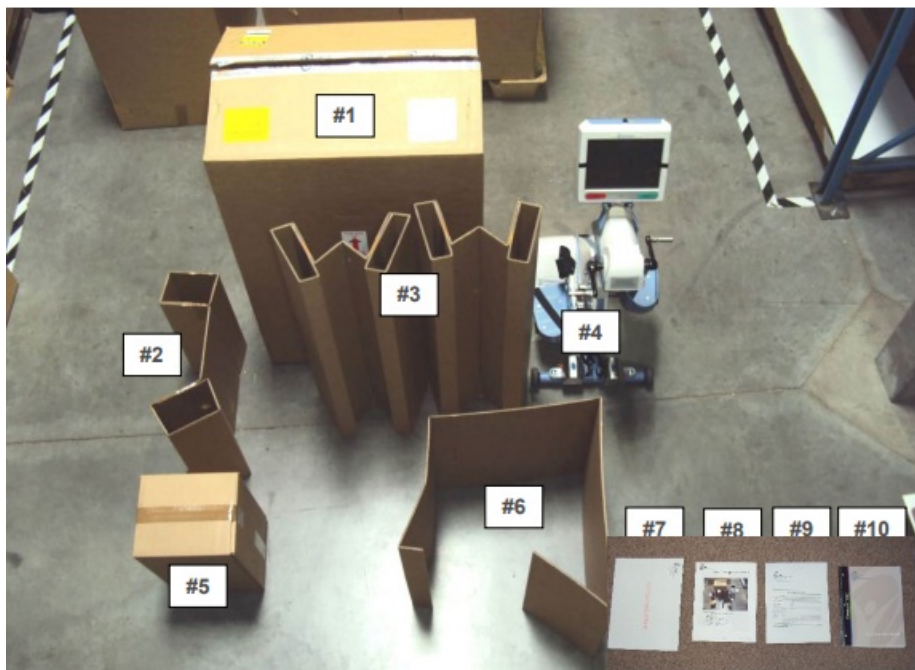
A Service Department Work Instruction

- June 8th, 2023
- Manager, Service Department
- Effective Date: March 23rd, 2021
- Release Date: See Master Control
- WI-0118 (2)

Packaging With OEM Box

All necessary packaging components are shown,

1. OmniCycle Box,
2. Front Support cardboard piece,
3. Two side support cardboard pieces,
4. OmniCycle,
5. Extra empty box for the Terminal being sent,
6. Middle support cardboard piece
7. Envelope
8. Packing Instructions
9. Calibration Certificate
10. User Manual



11. In the bottom of the box, you will find a foam tray with cutouts designed to fit the bottom of the OmniCycle.



12. Place OmniCycle box on its side with large foam cutout facing up.
13. Wheel OmniCycle into the box. Lift box to the upright position. As shown below.



14. Place side support cardboard piece (item #3) over extremity arm in the up position (first picture below). To move arm, release lock located under upper extremity arms.



15. Place the second side support cardboard piece (item #3) over upper extremity arm in the down position as shown below above in the second picture.

16. After placing side support cardboard pieces, the packaging should look like below.



17. Locate item # 6 and fold into triangle as shown below.



18. Place folded middle support cardboard piece (item #6) in space between OmniCycle and side wall of box as shown below.



19. Place front support cardboard piece (item #2) directly in front of side support pieces as shown below.



1. After packaging terminal, place extra empty box (item #5) into empty space. Place Packing Instructions (item 8), Calibration Certificate (item 9) and User Manual (item 10) into the White Envelope (item 7) and place the envelope into the box.
2. Close OmniCycle box and seal with ample tape, and the appropriate stickers.



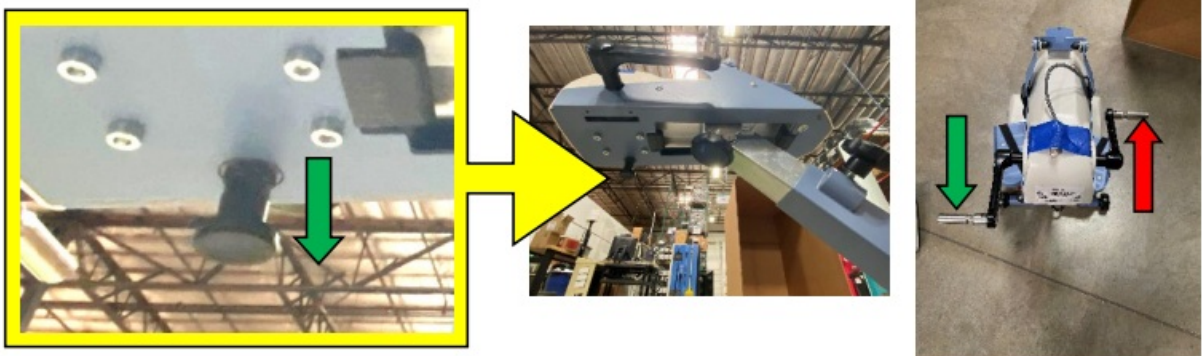
Packaging With ACP Box

All Necessary packaging components are shown:

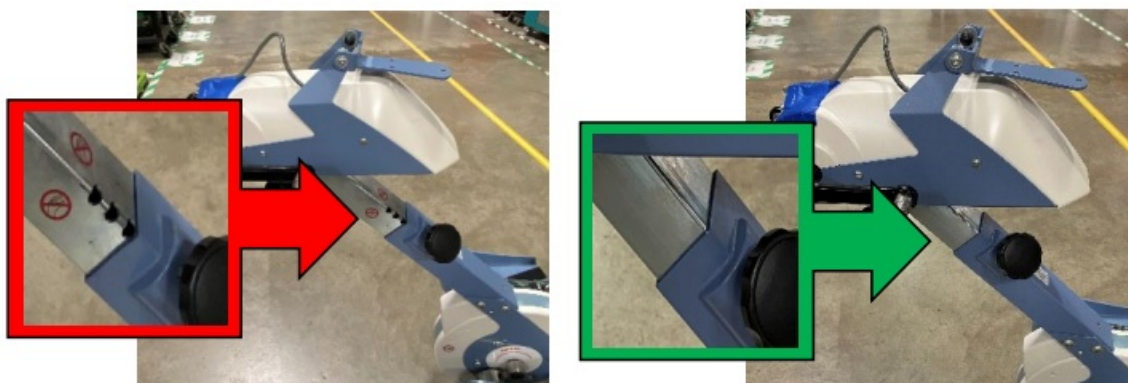
1. OmniCycle Swap Box
2. Fragile Sticker
3. Rehab Sticker
4. Upper Motor Foam
5. Lower Motor Foam
6. T-Bar Foam
7. Elite Terminal Insert
8. Terminal Box
9. IPM
10. Certificate
11. Barcode Label
12. (RMA Only) DLR Sticker



13. Build the swap box (1) with two passes of tape down the center and a single layer of tape on both ends.
14. Remove the terminal from the OmniCycle and tape the RJ connector to the upper motor cover.
15. Ensure to lock the upper motor with the left arm in the 6 o'clock position, this is done by pulling down on the motor lock knob located under the upper motor. Release the knob once the arms are in the correct orientation.

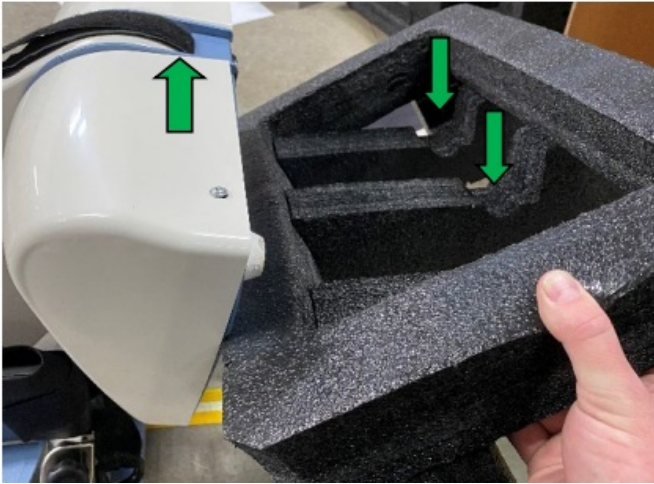


16. Ensure the height adjustment is set to its lowest setting, this is done by turning the height adjustment knob counterclockwise and pulling the knob away from the device.
17. (No adjustment holes should be visible)
18. Ensure the upper motor adjustment is pushed all the way forward, this is done by turning the height adjustment knob counterclockwise. When the adjustment knob has been loosened enough the upper motor will slide forward, tighten the knob once the motor cannot slide forward any further.



19. Place the lower motor foam piece (5) on the cycle by laying it on its back to make it easier to place the foam.

20. (Ensure the lower motor foam piece (5) has the “notch” in the foam facing towards the Velcro handle in the picture shown below).



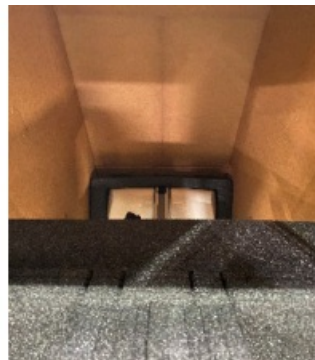
21. Bring the OmniCycle back upright and fold the terminal bracket so it's facing the front of the cycle.

22. Apply tape to secure the RJ connector in place to help reduce the possibility of damages, place the upper foam piece (4) over the left arm of the upper motor and press firmly to install.



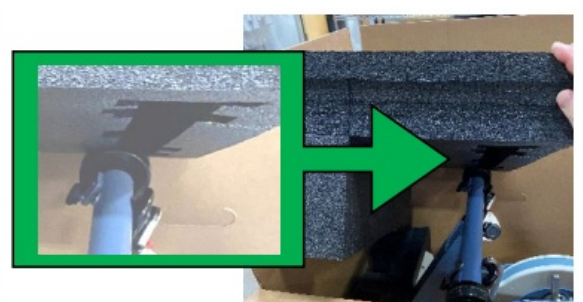
23. Tilt the OmniCycle back to allow the unit to roll into the swap box (1).

24. Once the lower motor foam piece (5) is touching the back of the swap box (1) tilt the cycle forward and support the box as it wants to lay down.



25. Secure the T-Bar locking straps by crisscrossing them to each other

26. Ensure the T-Bar slot of the foam piece (6) is aligned before pressing firmly to install



27. Place the OmniCycle Elite Terminal in the terminal box (8) using the terminal insert piece provided (7)
28. Place the IPM and certification on top of the terminal and seal the box
29. Place the box inside the swap box (1) on either side of the OmniCycle
 1. (RMA Only) Any additional accessories will be added via a sealed box and placed next to the OmniCycle



30. Seal the box and apply labels (2, 3, and 12) to the following locations shown below
 1. (RMA Only) Place the DLR (12) label in the location shown below



Where Posted

- See Master Control

Revision History

- See Master Control

Security Level: Medium | Confidential Records

- This document is the property of Accelerated Care Plus and must be accounted for. Information herein is considered confidential. Do not reproduce it, reveal it to an unauthorized person or send it outside of Accelerated Care Plus without written authorization from Accelerated Care Plus. This printed document is uncontrolled unless stamped.
- © 2021 Accelerated Care Plus Corporation – All Rights Reserved {Document # w/revision e.g., FRM0314 (1)}

FAQS


Q: What should I do if any packaging components are missing?

A: If any packaging components are missing, please contact Accelerated Care Plus customer service for replacements.

Q: How can I obtain additional user manuals or calibration certificates?

A: Additional user manuals or calibration certificates can be requested from Accelerated Care Plus by providing the product details and serial number.

Documents / Resources

	ACP OmniCycle Elite A000-533 Advanced Active Assist Cycle [pdf] Instruction Manual A000-533, OmniCycle Elite A000-533 Advanced Active Assist Cycle, OmniCycle Elite A000-533 , Advanced Active Assist Cycle, Active Assist Cycle, Assist Cycle, Cycle
---	---

References

- [User Manual](#)

Manuals+, Privacy Policy

This website is an independent publication and is neither affiliated with nor endorsed by any of the trademark owners. The "Bluetooth®" word mark and logos are registered trademarks owned by Bluetooth SIG, Inc. The "Wi-Fi®" word mark and logos are registered trademarks owned by the Wi-Fi Alliance. Any use of these marks on this website does not imply any affiliation with or endorsement.