



ACiQ RG Series Remote Controller Owner's Manual

[Home](#) » [ACiQ](#) » ACiQ RG Series Remote Controller Owner's Manual 

Contents

- [1 ACiQ RG Series Remote Controller](#)
- [2 INTRODUCTION](#)
- [3 Remote Controller Specifications](#)
- [4 Handling the Remote Controller](#)
- [5 Buttons and Functions](#)
- [6 How to Use Basic Functions](#)
- [7 Setting the TIMER](#)
- [8 How to Use Advanced Functions](#)
- [9 ECO/GEAR function](#)
- [10 FCC](#)
- [11 Documents / Resources](#)
- [12 Related Posts](#)

ACiQ

ACiQ RG Series Remote Controller



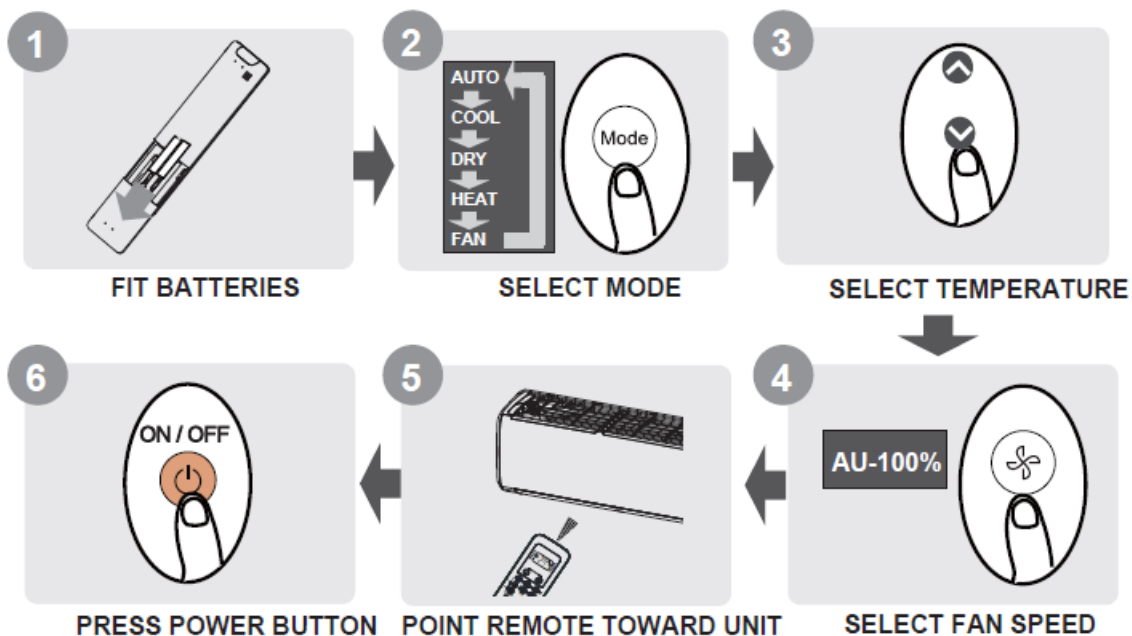
INTRODUCTION

Thank you for purchasing our air conditioner. Please read this manual carefully before operating your new air conditioning unit. Make sure to save this manual for future reference

Remote Controller Specifications

Model	RG10L(G2HS)/BGEF, RG10L(G2HS)/BGEFU1, RG10L1(G2HS)/BGEF, RG10L1(G2HS)/BGEFU1, RG10L10(G2HS)/BGEF, RG10P(G2HS)/BGEF, RG10P(G2HS)/BGEFU1, RG10P1(G2HS)/BGEF, RG10L(D2HS)/BGEF, RG10L(D2HS)/BGEFU1, RG10L1(D2HS)/BGEF, RG10L1(D2HS)/BGEFU1, RG10P1(G2HS)/BGEFU1, RG10L10(D2HS)/BGEF
Rated Voltage	3.0V(Dry batteries R03/LR03×2)
Signal Receiving Range	8m
Environment	-5°C~60°C(23°F~140°F)

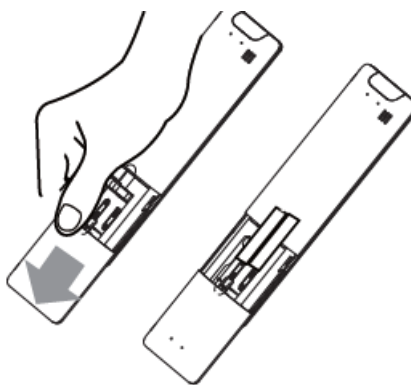
Quick Start Guide



Handling the Remote Controller

Inserting and Replacing Batteries

- Slide the back cover from the remote control downward, exposing the battery compartment.
- Insert the batteries, paying attention to match up the (+) and (-) ends of the batteries with the symbols inside the battery compartment.
- Slide the battery cover back into place



BATTERY NOTES

- For optimum product performance:
- Do not mix old and new batteries, or batteries of different types.
- Do not leave batteries in the remote control if you don't plan on using the device for more than 2 months.

BATTERY DISPOSAL

Do not dispose of batteries as unsorted municipal waste. Refer to local laws for proper disposal of batteries.

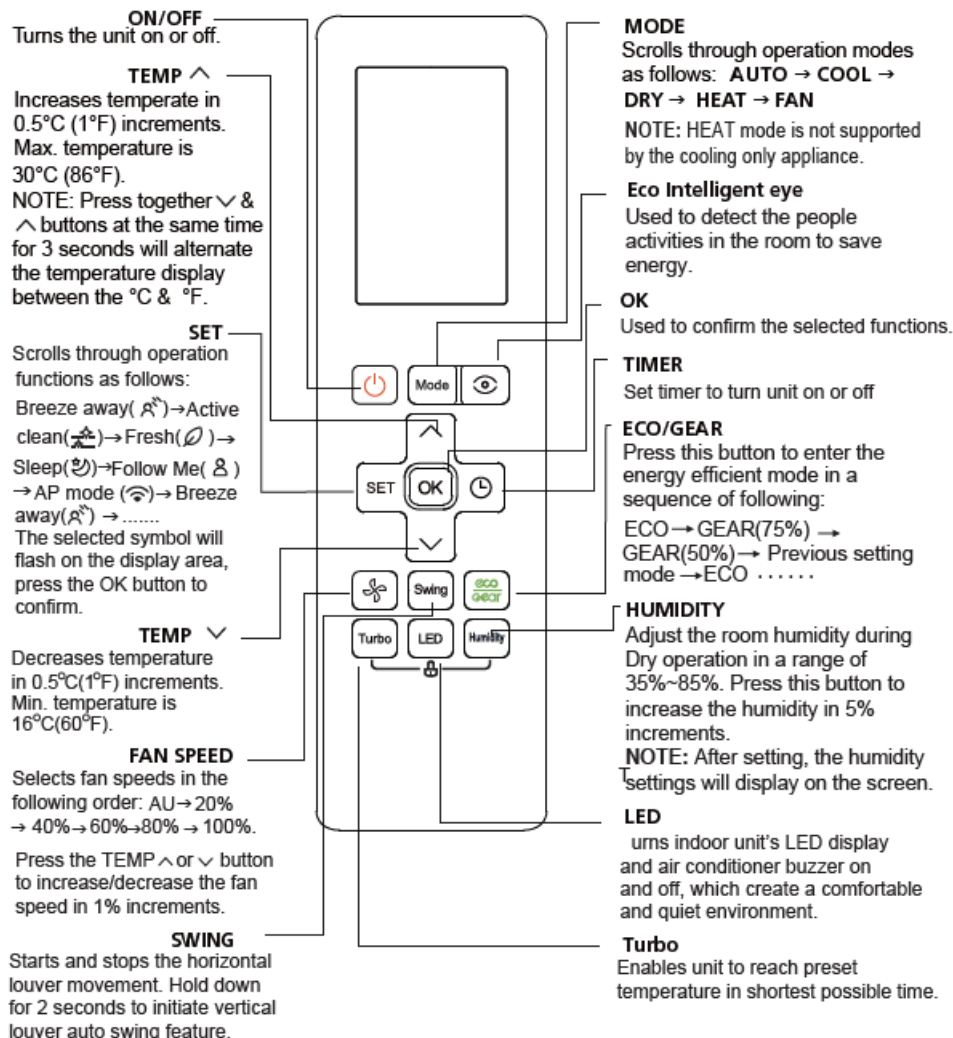
TIPS FOR USING REMOTE CONTROL

- The remote control must be used within 8 meters of the unit.
- The unit will beep when remote signal is received.

- Curtains, other materials and direct sunlight can interfere with the infrared signal receiver.
- Remove batteries if the remote will not be used more than 2 months

Buttons and Functions

Before you begin using your new air conditioner, make sure to familiarize yourself with its remote control. The following is a brief introduction to the remote control itself. For instructions on how to operate your air conditioner, refer to the How to Use Basic Functions section of this manual.



ON/OFF
Turns the unit on or off.

TEMP ^
Increases temperature in 0.5°C (1°F) increments. Max. temperature is 30°C (86°F).
NOTE: Press together ∨ & ^ buttons at the same time for 3 seconds will alternate the temperature display between the °C & °F.

SET
Scrolls through operation functions as follows:
Self clean() → Fresh()
→ Sleep() → Follow Me() → AP mode()
→ Self clean.....
The selected symbol will flash on the display area, press the OK button to confirm.

TEMP ∨
Decreases temperature in 0.5°C (1°F) increments. Min. temperature is 16°C (60°F).

FAN SPEED
Selects fan speeds in the following order: AU → 20% → 40% → 60% → 80% → 100%.
Press the TEMP ^ or ∨ button to increase/decrease the fan speed in 1% increments.

SWING
Starts and stops the horizontal louver movement. Hold down for 2 seconds to initiate vertical louver auto swing feature.

MODE

Scrolls through operation modes as follows: **AUTO → COOL → DRY → HEAT → FAN**
NOTE: HEAT mode is not supported by the cooling only appliance.

Intelligent eye function
Used to select wind flow follow people feature or wind flow away from people feature.

OK
Used to confirm the selected functions.

TIMER

Set timer to turn unit on or off

ECO/GEAR

Press this button to enter the energy efficient mode in a sequence of following:
ECO → GEAR(75%) → GEAR(50%) → Previous setting mode → ECO

HUMIDITY

Adjust the room humidity during Dry operation in a range of 35%~85%. Press this button to increase the humidity in 5% increments.
NOTE: After setting, the humidity settings will display on the screen.

LED

Turns indoor unit's LED display and air conditioner buzzer on and off, which create a comfortable and quiet environment.

Turbo

Enables unit to reach preset temperature in shortest possible time.

ON/OFF
Turns the unit on or off.

TEMP ^
Increases temperature in 0.5°C (1°F) increments. Max. temperature is 30°C (86°F).
NOTE: Press together ∨ & ^ buttons at the same time for 3 seconds will alternate the temperature display between the °C & °F.

SET
Scrolls through operation functions as follows:
Breeze away() → Active clean() → Fresh()
→ Sleep() → Follow Me() → AP mode() → Breeze away() →
The selected symbol will flash on the display area, press the OK button to confirm.

TEMP ∨
Decreases temperature in 0.5°C (1°F) increments. Min. temperature is 16°C (60°F).

FAN SPEED
Selects fan speeds in the following order: AU → 20% → 40% → 60% → 80% → 100%.
Press the TEMP ^ or ∨ button to increase/decrease the fan speed in 1% increments.

SWING
Starts and stops the horizontal louver movement. Hold down for 2 seconds to initiate vertical louver auto swing feature.

MODE

Scrolls through operation modes as follows: **AUTO → COOL → DRY → HEAT → FAN**
NOTE: HEAT mode is not supported by the cooling only appliance.

Eco Intelligent eye
Used to detect the people activities in the room to save energy.

OK
Used to confirm the selected functions

TIMER

Set timer to turn unit on or off

ECO/GEAR

Press this button to enter the energy efficient mode in a sequence of following:
ECO → GEAR(75%) → GEAR(50%) → Previous setting mode → ECO

HUMIDITY

Adjust the room humidity during Dry operation in a range of 35%~85%. Press this button to increase the humidity in 5% increments.
NOTE: After setting, the humidity settings will display on the screen.

LED

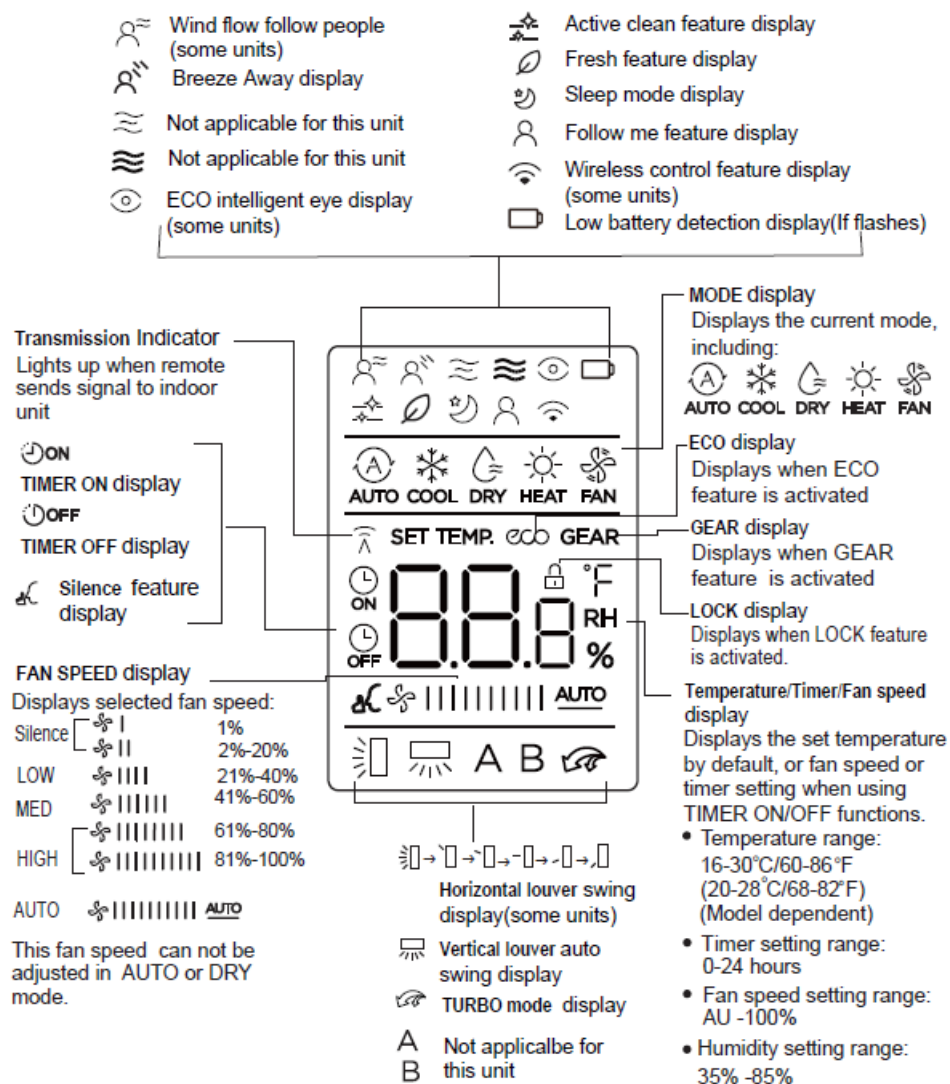
Turns indoor unit's LED display and air conditioner buzzer on and off, which create a comfortable and quiet environment.

Turbo

Enables unit to reach preset temperature in shortest possible time.

Remote Screen Indicators

Information are displayed when the remote controller is power up



How to Use Basic Functions

AUTO Mode



COOL or HEAT Mode



DRY Mode



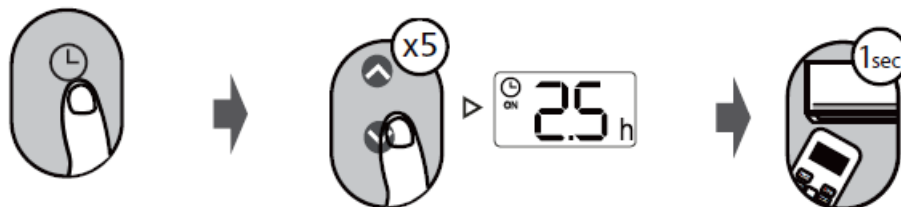
FAN Mode



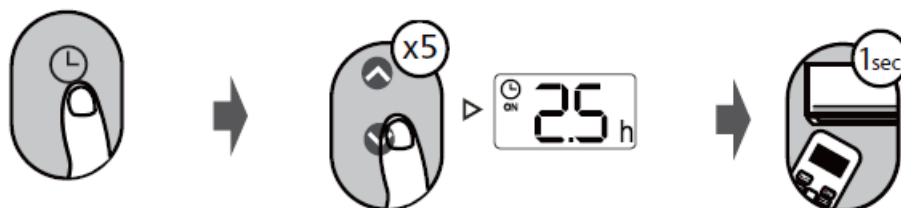
Setting the TIMER

TIMER ON/OFF – Set the amount of time after which the unit will automatically turn on/off.

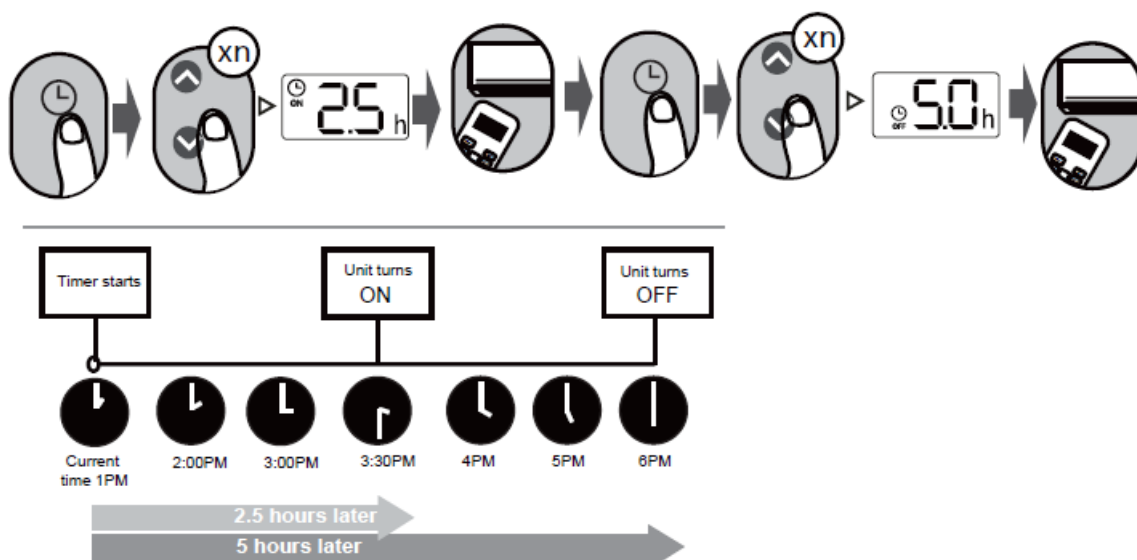
TIMER ON setting



TIMER OFF setting



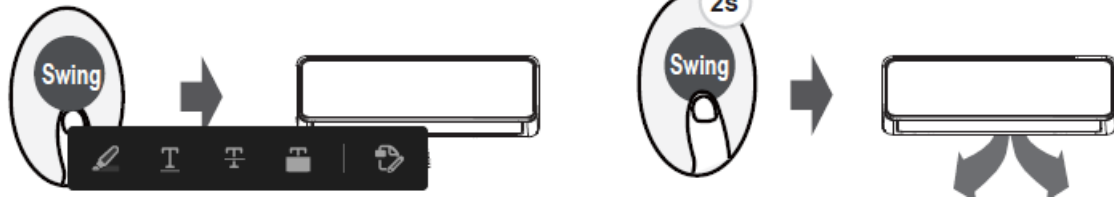
TIMER ON & OFF setting(example)



How to Use Advanced Functions

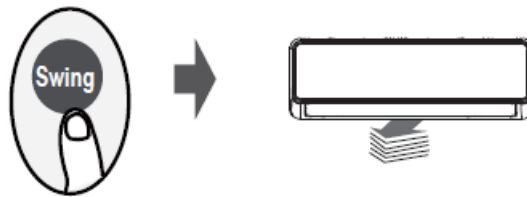
Swing function

Press Swing button



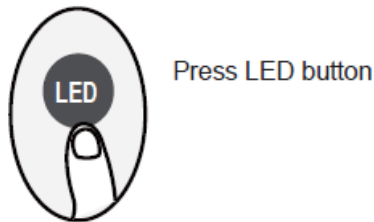
Airflow direction

If continue to press the SWING button, five different airflow directions can be set. The louver can be move at a certain range each time you press the button. Press the button until the direction you prefer is reached(some units only).

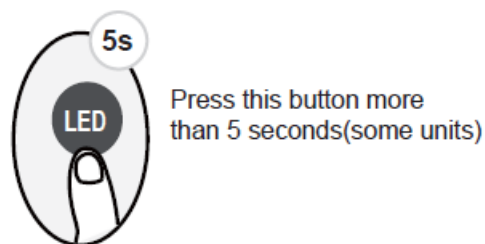


LED DISPLAY

- Press this button to turn on and turn off the display on the indoor unit.



- Keep pressing this button more than 5 seconds, the indoor unit will display the actual room temperature. Press more than 5 seconds again will revert back to display the setting temperature



ECO/GEAR function

Press this button to enter the energy efficient mode in a sequence of following: **ECO GEAR(75%) GEAR(50%) Previous setting mode ECO.....**



ECO operation

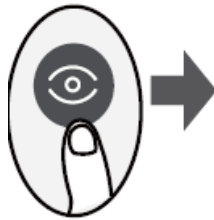
Under cooling mode, press this button, the remote controller will adjust the temperature automatically to 24 C/75 F, fan speed of Auto to save energy (only when the set temperature is less than 24 C/75 F). If the set temperature is above 24 C/75 F, press the ECO button, the fan speed will change to Auto, the set temperature will remain unchanged

GEAR operation

- Press the ECO/GEAR button to enter the GEAR operation as following:
- 75%(up to 75% electrical energy consumption)
- 50%(up to 50% electrical energy consumption)
- Previous setting mode

ECO Intelligent Eye Function(For models of RG10L series)

Press this button Under ECO Intelligent eye mode, with the built-in infrared sensor, the unit can detect the people's activities in the room. In Cooling mode, when you are away for 30 minutes, the unit automatically lowers the frequency to save energy (for inverter models only). And the unit will automatically resume operation if sensing human activity again.



Silence function Keep pressing Fan button for more than 2 seconds to activate/disable Silence function(some units). Due to low frequency operation of compressor, it may result in insufficient cooling and heating capacity. Press ON/OFF, Mode, Sleep, Turbo or Clean button while operating will cancel silence function.



FP function Press this button 2 times during one second under HEAT Mode and setting temperature of 16 C/60 F or 20 C/68 F(for models RG10L10(G2HS)/BGEF & RG10L10(D2HS)/BGEF only).



FCC

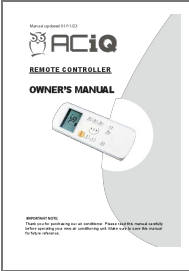

The device could comply with the local national regulations.

- This device may not cause harmful interference, and
- this device must accept any interference received, including interference that may cause undesired operation.

This equipment has been tested and found to comply with the limits for a Class B digital device, pursuant to part 15 of the FCC Rules. These limits are designed to provide reasonable protection against harmful interference in a residential installation. This equipment generates, uses and can radiate radio frequency energy and, if not installed and used in accordance with the instructions, may cause harmful interference to radio communications. However, there is no guarantee that interference will not occur in a particular installation. If this equipment does cause harmful interference to radio or television reception, which can be determined by turning the equipment off and on, the user is encouraged to try to correct the interference by one or more of the following measures:

- Reorient or relocate the receiving antenna.
- Increase the separation between the equipment and receiver.
- Connect the equipment into an outlet on a circuit different from that to which the receiver is connected.
- Consult the dealer or an experienced radio/TV technician for help.
- Changes or modifications not approved by the party responsible for compliance could void user's authority to operate the equipment

Documents / Resources

	<p>ACiQ RG Series Remote Controller [pdf] Owner's Manual CR285, RG Series Remote Controller, RG Series, Remote Controller, Wireless Remote Control ler</p>
	<p>ACiQ RG Series Remote Controller [pdf] Owner's Manual RG Series, Remote Controller, RG Series Remote Controller, Controller</p>