

# Achort B0B1QN1QR6 Foldable Bluetooth Keyboard With Touchpad User Manual

[Home](#) » [Achort](#) » Achort B0B1QN1QR6 Foldable Bluetooth Keyboard With Touchpad User Manual 

## Contents

- [1 Achort B0B1QN1QR6 Foldable Bluetooth Keyboard With Touchpad](#)
- [2 Product introduction](#)
- [3 iOS Connection Instructions](#)
- [4 Win 10 Connection Instructions](#)
- [5 Android Connection Instructions](#)
- [6 MasOS connection instructions](#)
- [7 Product features](#)
- [8 Technical Specifications](#)
- [9 Troubleshooting](#)
- [10 Warranty](#)
- [11 Keyboard Maintenance](#)
- [12 Documents / Resources](#)
  - [12.1 References](#)

# Achort

**Achort B0B1QN1QR6 Foldable Bluetooth Keyboard With Touchpad**

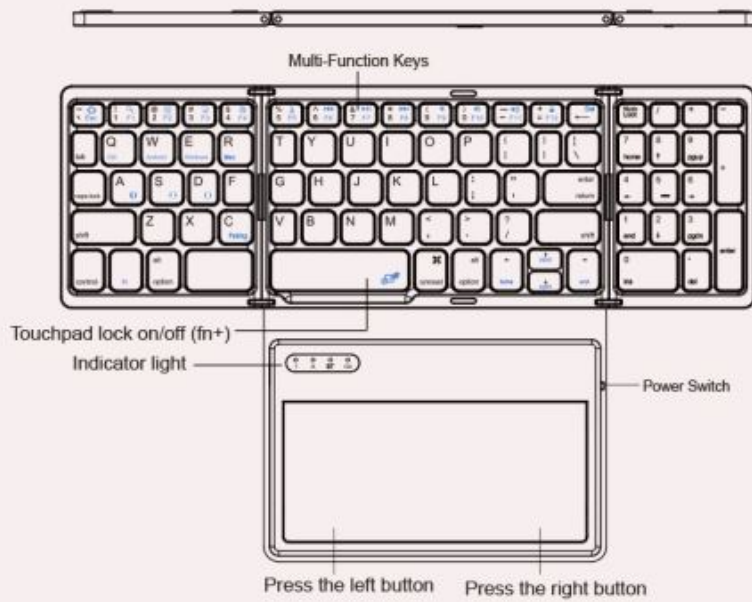


**Win /iOS /Android/Mac**

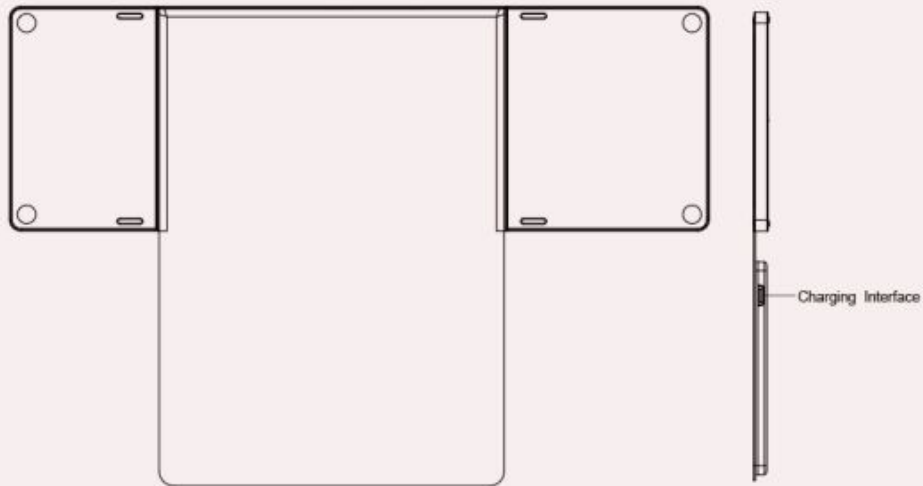
**Note:** Please read the user manual carefully before you start using this product

**Product introduction**

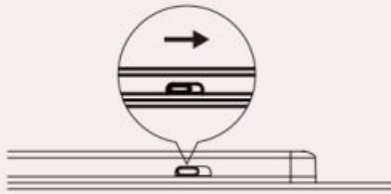
## Front



## Back



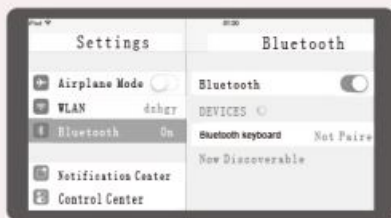
## iOS Connection Instructions



1. Please open the touchpad side power switch, blue lights up, Select the channel, press the Fn+C connect button, blue light twinkles.



2. Open the tablet PC setting "Bluetooth" into searching and pairing status .

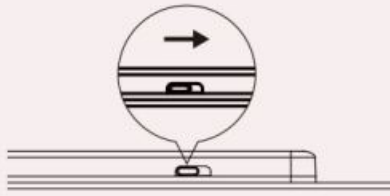


3. You will find the "Bluetooth keyboard" and then click to next step .



4. There is a tip for connecting successfully ,you can use your keyboard comfortably .

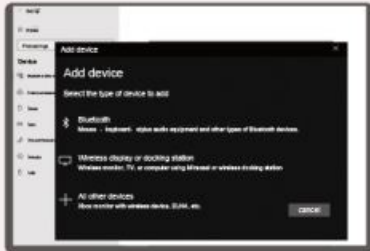
## Win 10 Connection Instructions



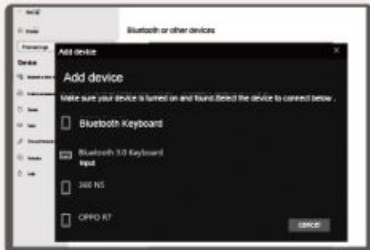
1. Please open the touchpad side power switch, blue lights up, Select the channel, press the Fn+C connect button, blue light twinkles.



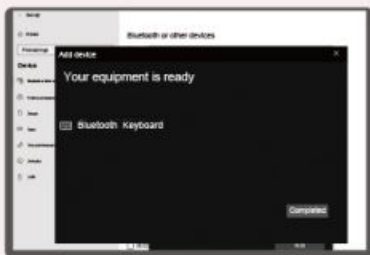
2. Open settings, turn on Bluetooth, click Add Bluetooth or other devices.



3. Select "Bluetooth" in the Add Device to search.

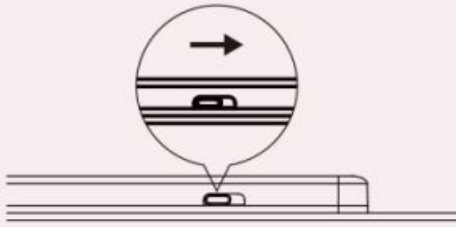


4. You will find the "Bluetooth keyboard " and then click the pairing name to connect.



5. There is a tip for connecting successfully , you can use your keyboard comfortably .

## Android Connection Instructions



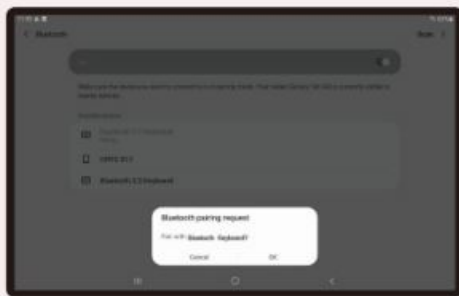
1. Please open the touchpad side power switch, blue lights up, Select the channel, press the Fn+C connect button, blue light twinkles.



2. Open "Settings" and then click "Connect"



3. Turn on Bluetooth to search for the pair name.

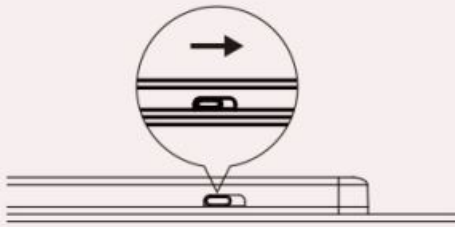


4. Click the pair name "Bluetooth keyboard". pair request is displayed, click OK.



5. There is a tip for connecting successfully ,you can use your keyboard comfortably .

## MasOS connection instructions



1. Please open the touchpad side power switch, blue lights up, Select the channel, press the Fn+C connect button, blue light twinkles.



2. Please open system preferences and click on Bluetooth.



3. Until the "Bluetooth Keyboard" is found, Then click on the pairing connection.



4. There is a tip for connecting successfully, you can use your Keyboard comfortably.

## Product features

iOS/Android		Windows		Windows	
Fn+	Corresponding function	Fn+Shift+	Corresponding function	Fn+	Corresponding function
~ \ Esc	Return to Desk	~ \ Esc	Home Page	~ \ Esc	Esc
! 1 F1	Search	! 1 F1	Search	! 1 F1	F1
@ 2 F2	Select	@ 2 F2	Select	@ 2 F2	F2
# 3 F3	Copy	# 3 F3	Copy	# 3 F3	F3
\$ 4 F4	Stick	\$ 4 F4	Stick	\$ 4 F4	F4
% 5 F5	Cut	% 5 F5	Cut	% 5 F5	F5
^ 6 F6	Previous track	^ 6 F6	Previous track	^ 6 F6	F6
& 7 F7	Play/Pause	& 7 F7	Play/Pause	& 7 F7	F7
* 8 F8	Next track	* 8 F8	Next track	* 8 F8	F8
( 9 F9	Mute	( 9 F9	Mute	( 9 F9	F9
) 0 F10	Volume-	) 0 F10	Volume-	) 0 F10	F10
— _ F11	Volume+	— _ F11	Volume+	— _ F11	F11
+ = F12	lock	+ = F12	lock	+ = F12	F12

### Three system input method switch

- **iOS/Mac:** control+ Space key
- **Windows:** control+ Shift
- **Android:** control+ Shift

### Three system-switching languages

- **iOS/Mac:** control+Space key switch language
- **Windows :** Alt+Shift switch language
- **Android:** Shift+Space key switch language

### Technical Specifications

- **Keyboard size:** 304.09 x 97.79 x 6.1 mm ( open) 152 x 100 x 20 mm (folding)
- **Touchpad size:** 132.3 x 61 mm
- **Key working current:** < 4 mA

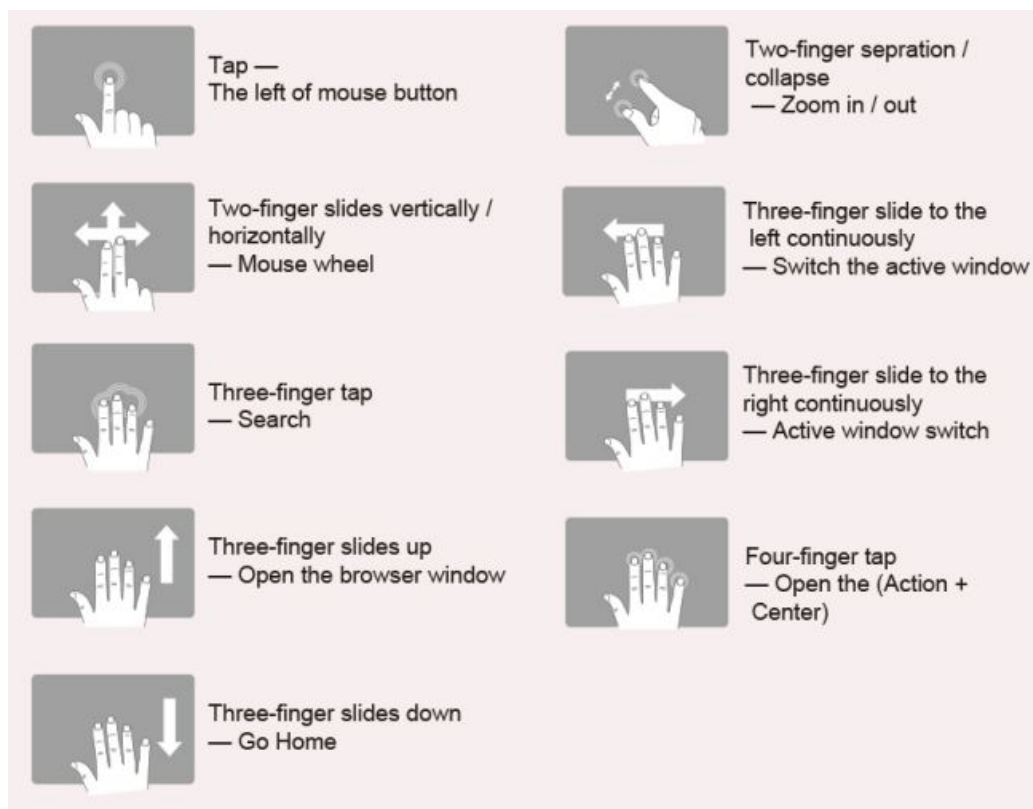


- **Touchpad working current:** 15 mA
- **Working distance:** 10 m
- **Lithium battery capacity:** 140 mAh
- **Working voltage:** 3.7 V
- **Charger specifications:** 5V --- 1A or 2A
- **Weight:** 274 g
- **Standby current:** < 0.65 mA
- **Sleep current:** 27 MA
- **Sleep time:** Ten minutes
- **Awaken way:** Press key
- **Charger specifications:** 5V --- 1A or 2A

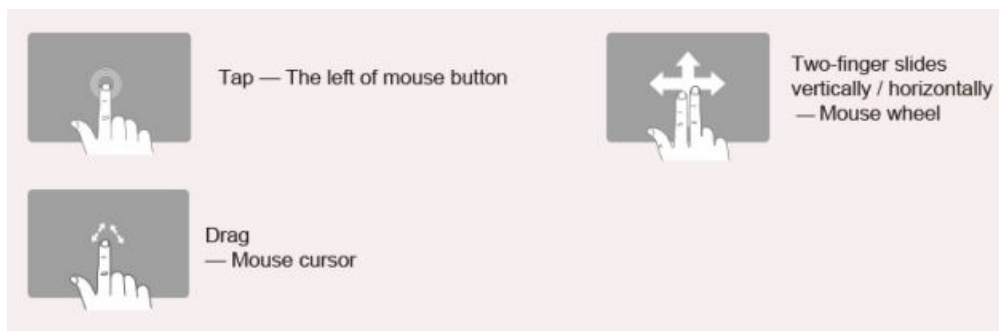
### Status Display LED

- **Connect:** Open the power switch, and the blue lights up, press the connect button, blue light twinkles.
- **Charging:** The indicator light will be on green, after fully charging, the light crush out.
- **Low Voltage Indication:** When the voltage is below 3.3 V, a red light twinkles.

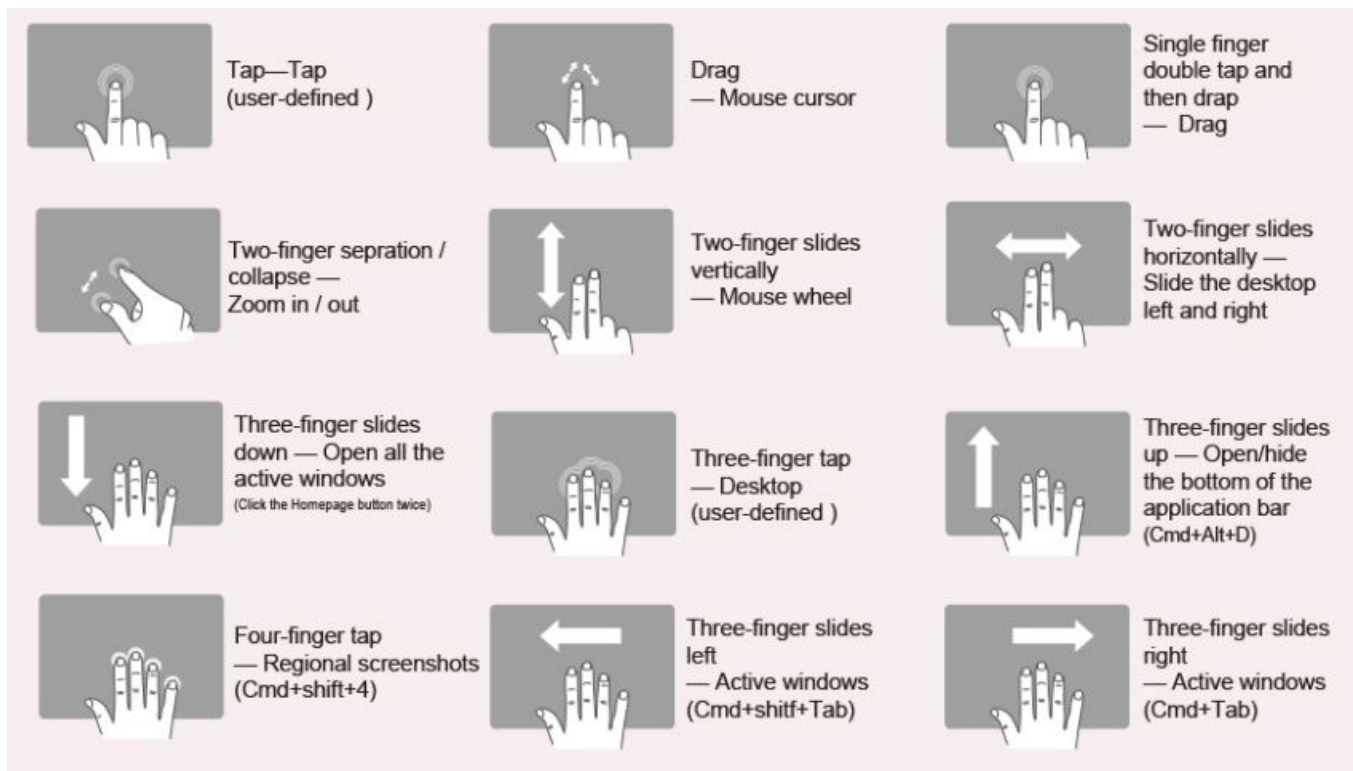
### Touchpad function description (Windows10), must be switched to Windows system



### Touch pad function description (Android), must be switched to the Android system



**Touch pad function description (iOS 13.4.1 and above), must be switched to iOS system**



#### **User-defined:**

Settings – Auxiliary Functions – Touch – Auxiliary Touches – Device – Click the keyboard's pairing name, and then customize the function of single finger, Three-finger'.

#### **Multi-channel connection**

- When connecting the first device, first press Fn+ 1 and then press Fn+C to start the connection.
- Before connecting the second device, press Fn+2 once, then press Fn+C to start the connection.
- Before connecting the third device, press Fn+3 once, then press Fn+C to start the connection.
- To use multiple devices at the same time, press Fn + 1 / 2 / 3 to switch to the connected devices freely.

#### **Troubleshooting**

Please contact the after-sales service.

#### **Copyright**

It is forbidden to reproduce any part of this manual without the permission of the seller.

#### **Safety instructions**

Do not open or repair this device, Do not use the device in a damp environment. Clean the device with a dry cloth.

## Warranty

The device is provided with a one-year limited hardware warranty from the purchase day.

## Keyboard Maintenance

1. Please keep the keyboard away from liquid or humid environments, saunas, swimming pool, and steam rooms and don't let the keyboard get wet in the rain.
2. Please don't expose the keyboard at too high or too low a temperature condition.
3. Please don't put the keyboard under sun for a long time.
4. Please don't put the keyboard close to the flame, such as in cooking stoves, candles or fireplaces.
5. Avoid sharp objects scratching products, and timely to recharge products to ensure normal use.

### Warranty Card

User information

Company or personage full name

Contact address

TEL Zip

The purchased product name and model NO.

Purchased date

This reason due to the product broken and damage is not include on the warranty.  
(1) accidents, misuse, improper operation, or any unauthorized maintenance, alteration, or disassembly;  
(2) Improper operation or maintenance, violation of product instructions or improper connection of power during use;  
(3) Or use consumables (such as spare batteries) that are not provided by the company but applicable laws Except where such restrictions are prohibited.

Certification

Inspection :  
Production date :



[Achor B0B1QN1QR6 Foldable Bluetooth Keyboard With Touchpad](#) [pdf] User Manual  
B0B1QN1QR6 Foldable Bluetooth Keyboard With Touchpad, B0B1QN1QR6, Foldable Bluetooth Keyboard With Touchpad, Bluetooth Keyboard With Touchpad, Keyboard With Touchpad, Touchpad, Bluetooth Keyboard, Keyboard

References

- [User Manual](#)

[Manuals+](#), [Privacy Policy](#)

This website is an independent publication and is neither affiliated with nor endorsed by any of the trademark owners. The "Bluetooth®" word mark and logos are registered trademarks owned by Bluetooth SIG, Inc. The "Wi-Fi®" word mark and logos are registered trademarks owned by the Wi-Fi Alliance. Any use of these marks on this website does not imply any affiliation with or endorsement.