



ACETECH ACE Target App User Guide

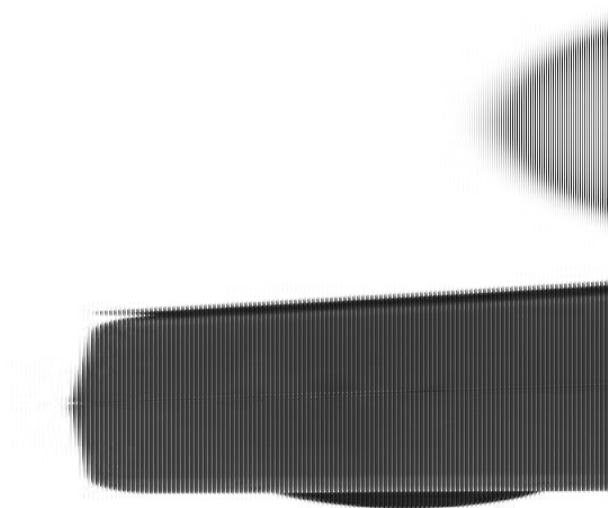
[Home](#) » [ACETECH](#) » ACETECH ACE Target App User Guide 

Contents

- [1 ACETECH ACE Target App](#)
- [2 AceTarget-D\(Dynamic\) Contents](#)
- [3 Precautions](#)
- [4 Quick Start Guide](#)
- [5 Product Introduction](#)
- [6 App Operation Guide](#)
- [7 Game Setting: Total 4 Game Modes and a Demo](#)
- [8 Warranty](#)
- [9 Documents / Resources](#)
 - [9.1 References](#)
- [10 Related Posts](#)









ACETECH ACE Target App



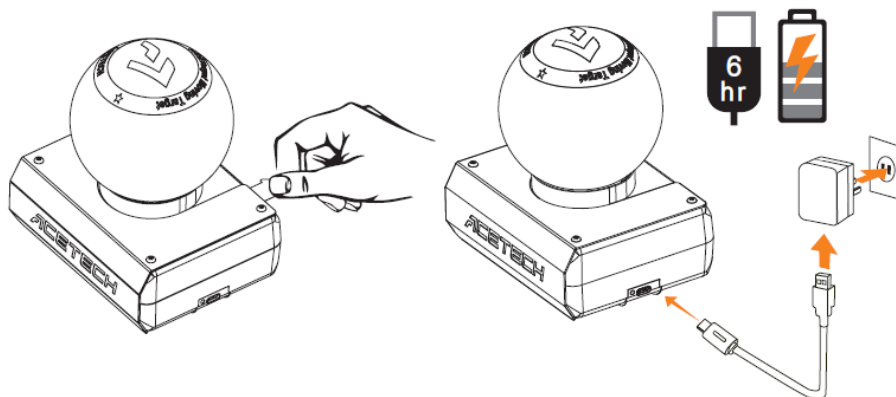
AceTarget-D(Dynamic) Contents

Contents

Item	Contents	Image	Quantity	Instruction
1	AceTarget-D		1	With 18650 Li-Ion Battery
2	Rail sets		1	(6Pcs) Total length 90(cm)
3	Type C Charging cable		1	Length 1 meter
4	PCB Charging Protect Shield		1	To protect the charging connector been hit
5	Non-slip mat		24	Stick under the depending on the situation
6	M3x15 Screw		8	For rail securing use
7	ACETECH Velcro		1	Replacement for target ball
8	Motor		1	replacment
9	Manual		1	

Precautions

- Please remove the battery insulation tab before the first me use and charge it for at least 6 hours. (The maximum charging current is 500mA.)



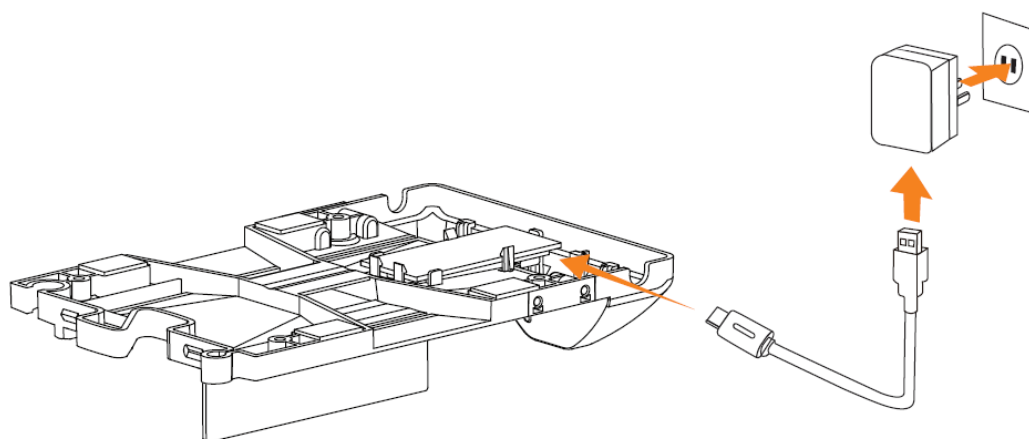
- The target ball and connection part of AceTarget-D is consumable and not covered by the warranty. Consuming speed is varied by the frequency of usage, and the velocity of the air gun.
- Bullet marks and dents on the target ball and face are normal and not be covered by the warranty.
- When using an AceTarget-D, the metal-covered front should face to the shooter. There is no protection at the

backside of the AceTarget.

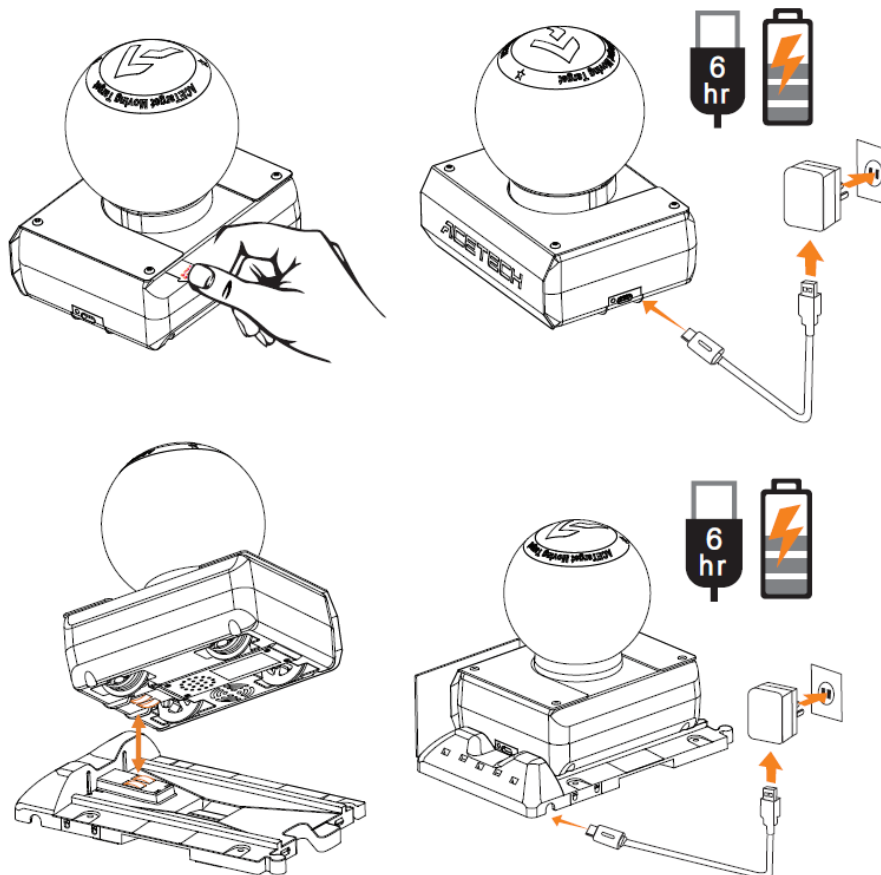
- AceTarget can be charged when it is being used. Please avoid charging cable and portable charger being hit by BBs.
- Please turn off AceTarget when it is not in use.
- Recharge AceTarget for 30 minutes once every 3 months to avoid battery damage.

Quick Start Guide

1. Assemble the rails and screw the “PCB Charging Protect Shield” on the rail.

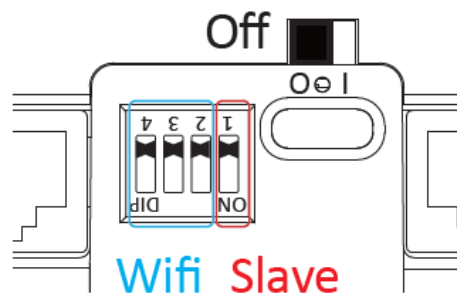
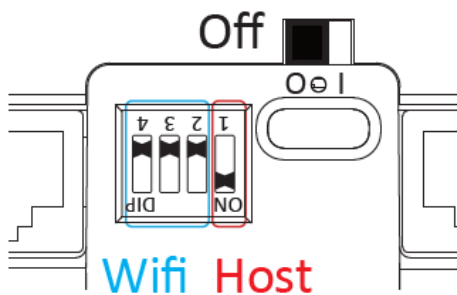


2. Remove the battery insulation tab and charge AceTarget for at least 6 hours before use. Make sure the charging connectors of the target and rail are on the same side. And connect with type C charging cable.

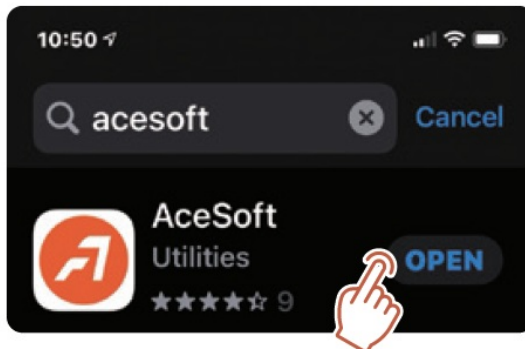


3. Turn off all the devices before setting the channel. And refer to page 5 for the setting details. Set up an Acetarget as “Host” and others are “Slave”

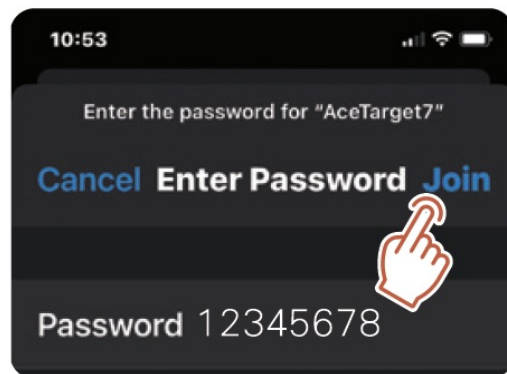
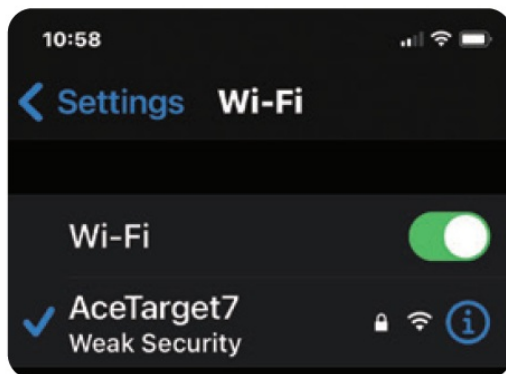
If there are 2 sets of AceTarget systems in the same area, set the WIFI into different channels to avoid being bonded as one system.



4. Download the AceSo App. on a mobile device and run the App are installation.








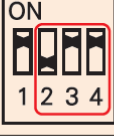


5. Connect the mobile device to any of AceTarget-S.Default password: 12345678



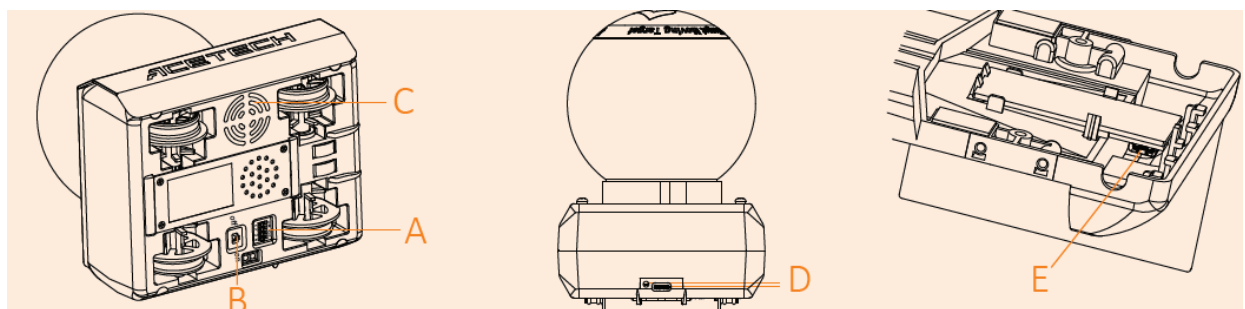
6. Start the games. For more details of the operation for the games, please refer to App. Operation Guide

Product Introduction

1. A recommended Target system is included 5pcs Acetarget S and 1pc Acetarget D.
2. AceTarget-D: The Moving ball target installed on the rail can be moved le and right, and the rail extension length can be purchased, whole system execute by the smart device with WIFI connection, execute the AceSo App operation and use.
3. Details:
 - A. 4 digit Setting Buton: Toggle the switch to the symbol "ON" for binary "1". Toggle the switch to the digits "1 2 3 4" for binary "0". The first digit sets the Host/Slave 1: Host 0: Slave. Only one device is allowed to be Host, the rest devices shall be set as Slave as the default setting. The switches on 2, 3, and 4 can provide 8 independent WIFI channels. The same system must be set to the same channel. The default setting is channel "Acetarget1"

Digits	Channel	Digits	Channel
	Channel 1		Channel 5
	Channel 2		Channel 6
	Channel 3		Channel 7
	Channel 4		Channel 8

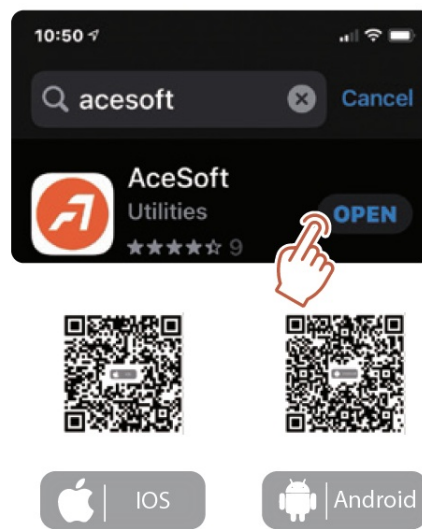
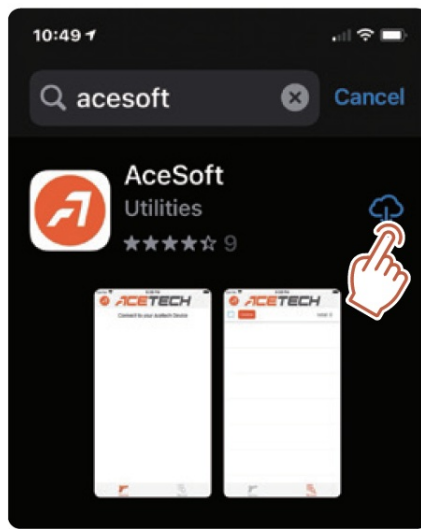
- B. Power Button
- C. Speaker hole: The Speaker can beep and the volume can be adjusted by App
- D. TYPE-C Charging Port and Indicator LED
- E. Power port for rail
- F. Dimensions: 135mm x 113mm x 162mm
- G. Weight: 580g (including battery)



App Operation Guide

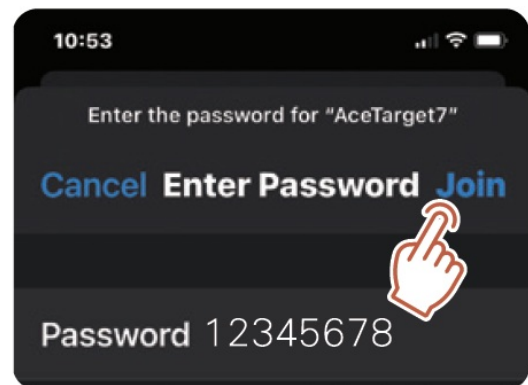
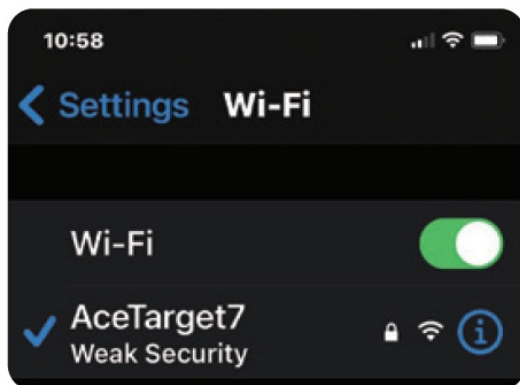
Download App

Scanning the QR code on the package to download AceSo Appy or searching on App Store (Apple) or Play Store (Android). Android 5.0 / iOS 10.0 or later is recommended



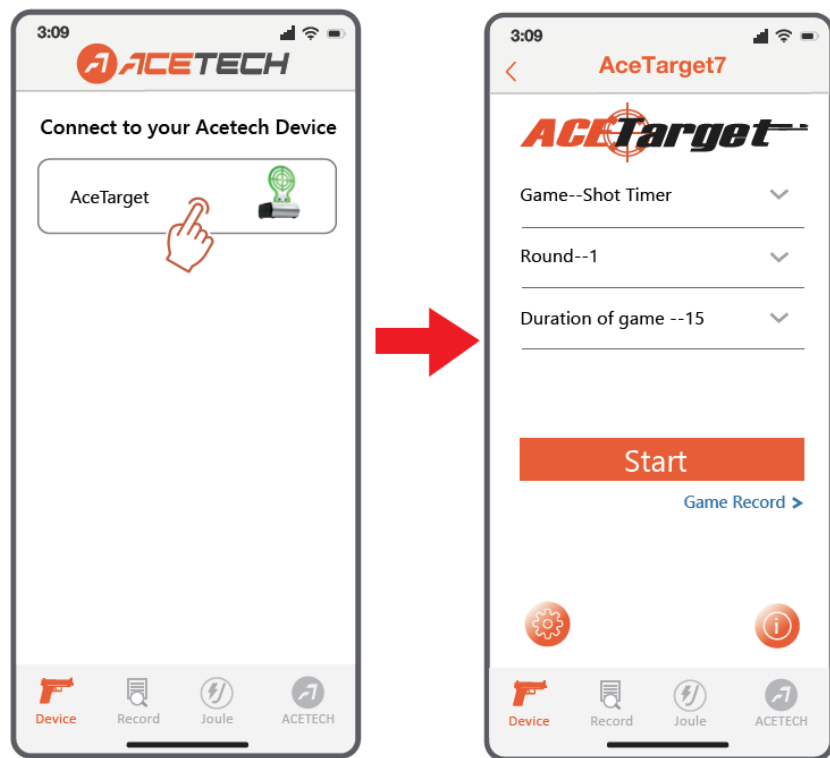
Connect Host

Turn WiFi of the mobile device on and connect to AceTarget(1-8). Password: 12345678. Host can only be connected by one mobile device only.

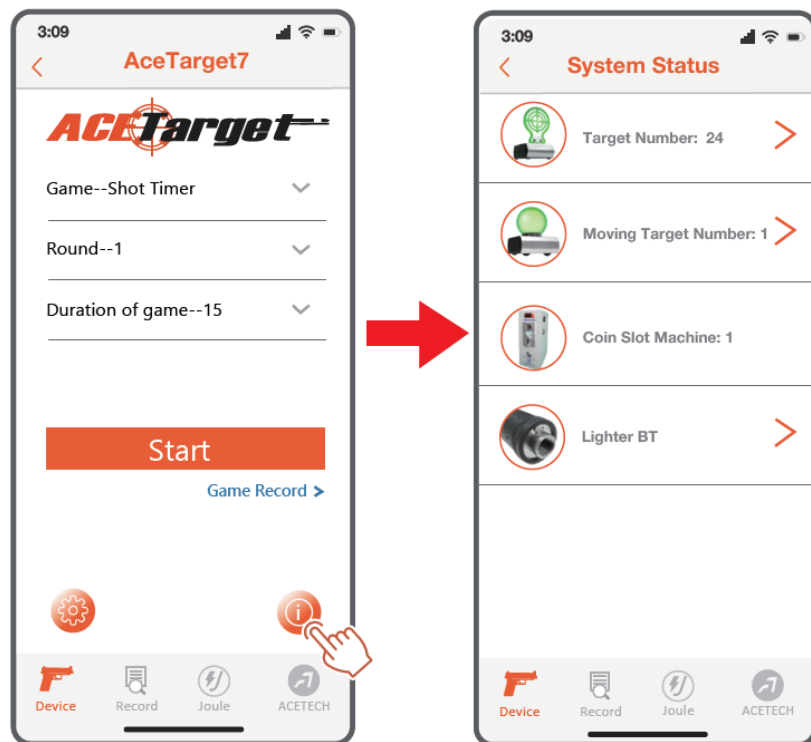


Run the App

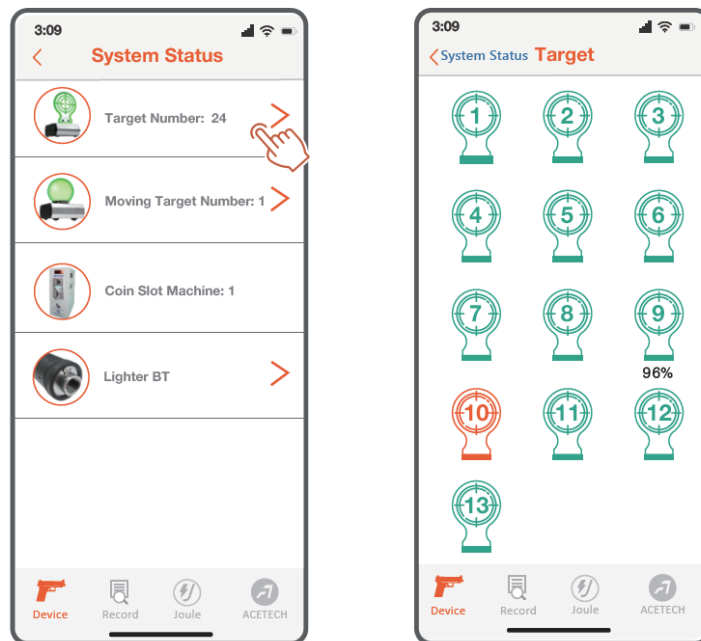
Make sure the mobile device has connected to Wi-Fi of AceTarget. Run the App, the app displays the following picture. Tap the device figure to enter the game setting.



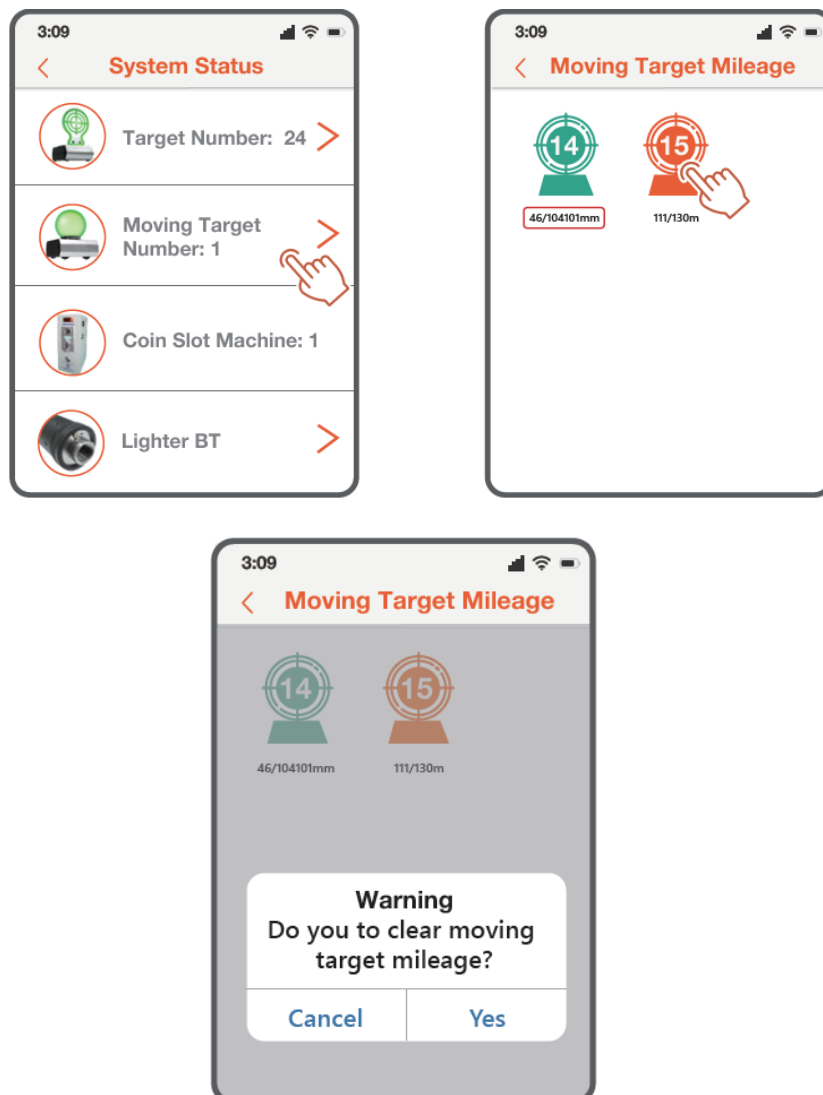
System Function Guidance: Tap



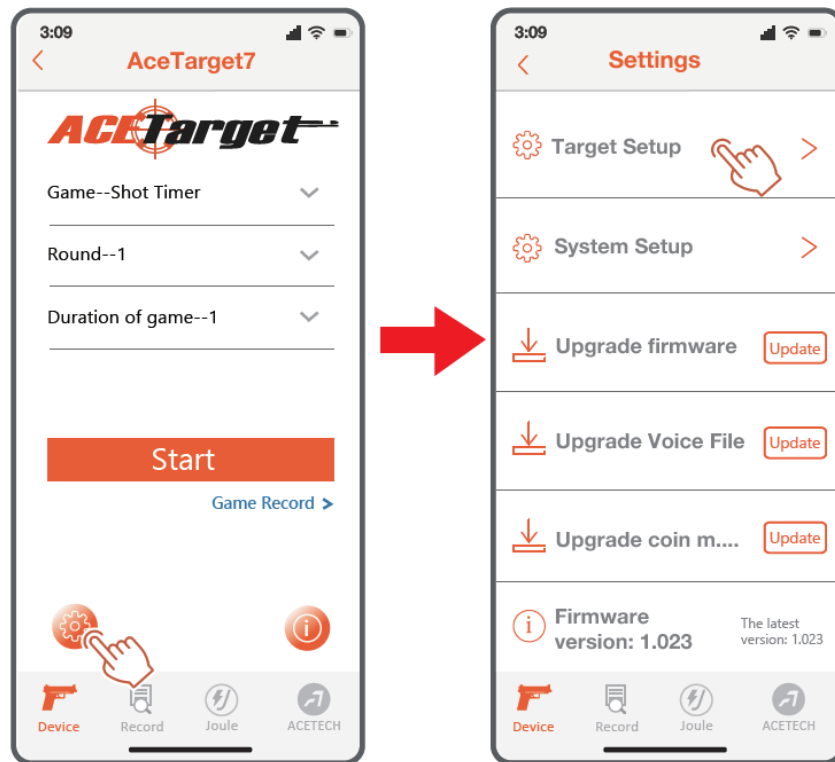
- “Target Number: 13” means there are 13units of AceTarget-S in the system.
- “Moving Target Number: 1” means there are 1 units of AceTarget-D in the system.
- Tap Target Number to check the remaining battery percentage of each AceTarget-S. When AceTarget-S connect to socket power and no battery percentage be displayed
- Tap , and the contraposed AceTarget-D rise and light up.



- Tap Target Moving Target Number to see the mileage of AceTarget-D. Then, Tap the icon the selected AceTarget-D to turn on green light, and there will be a message on the App asking if you need to clear the mileage of AceTarget-D. The mileage record of the selected AceTarget-D will be erased er the requirement of the message is confirmed.

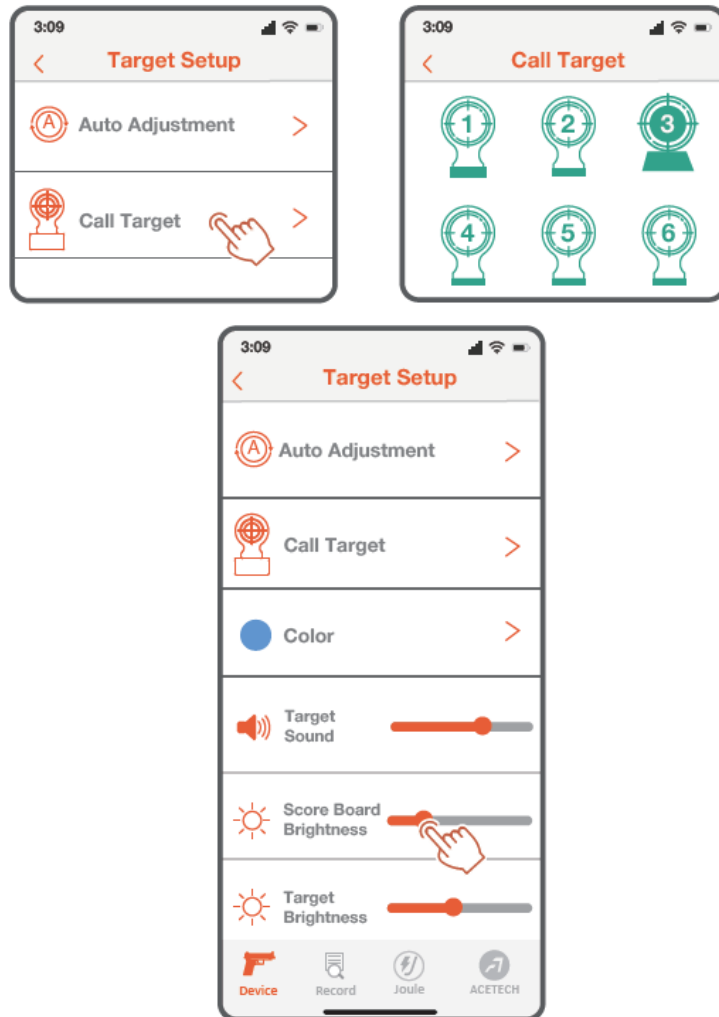


System Setup Description: Tap to enter the System Setup page.

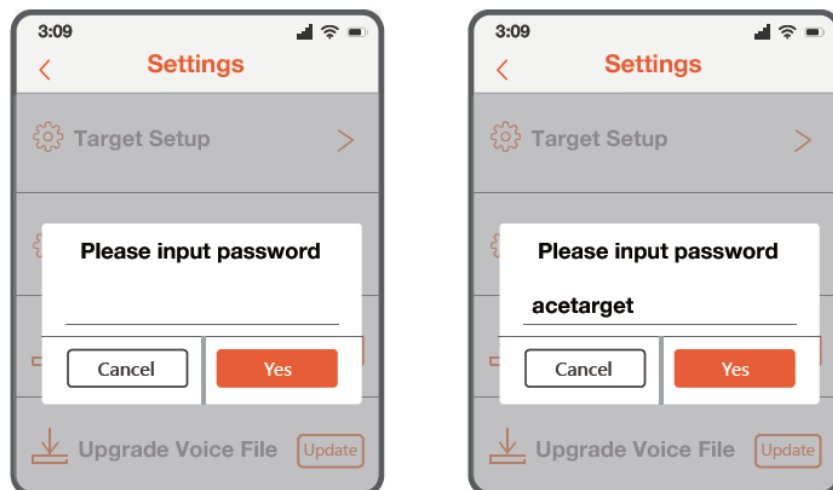


- **Target Setup:**

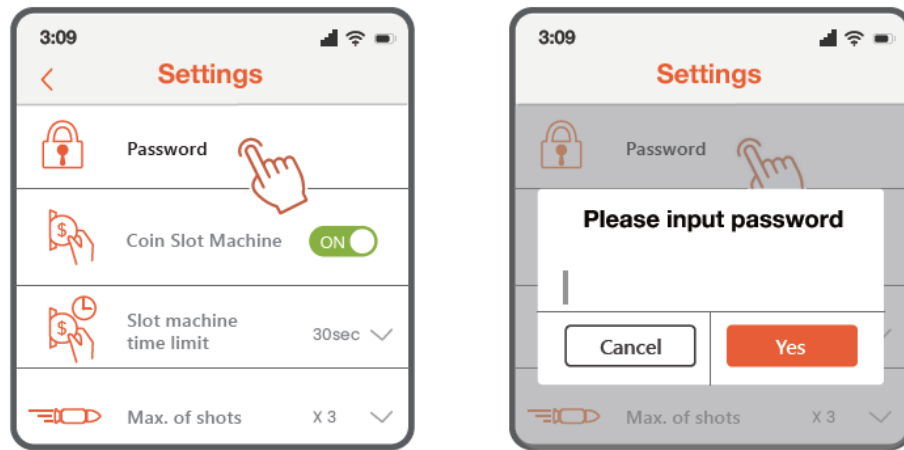
1. Auto Adjustment: Rise all AceTarget-S to check the location, and AceTarget-D move around to remeasure the length of the rail. The target flashes green to indicate that it is working properly, and it flashes red abnormally.
2. Call-ID: Enter to check the current battery percentage. Tap the number on the screen, the corresponding target rises up with green light, showing the AceTarget-S location.



• **System Setup:**

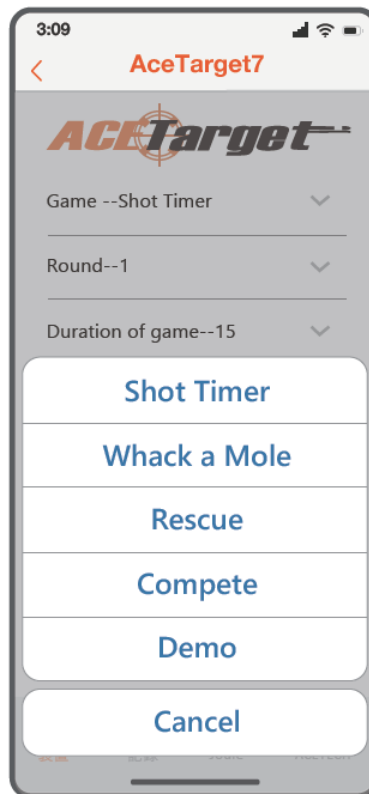


- Enter the password to change the mode. (Default Password: acetarget)
- To switch to Arcade Mode, a coin slot machine is requested.
- After entering the correct password, the user enters a new password, (Enter at least four digits.)
- Then fill up the new password



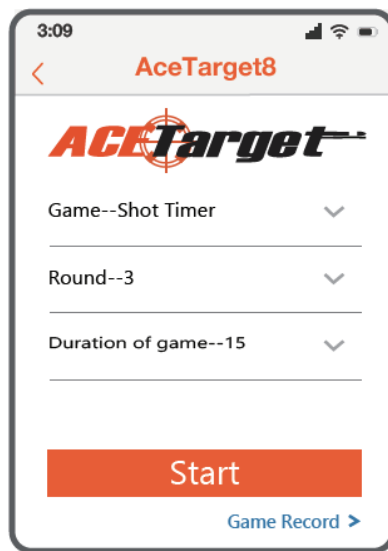
- Update firmware / Update voice / Update coin slot Machine
 - Tap the “Update” button to update the latest firmware for connected AceTarget-S and AceTarget-D one by one.

Game Setting: Total 4 Game Modes and a Demo



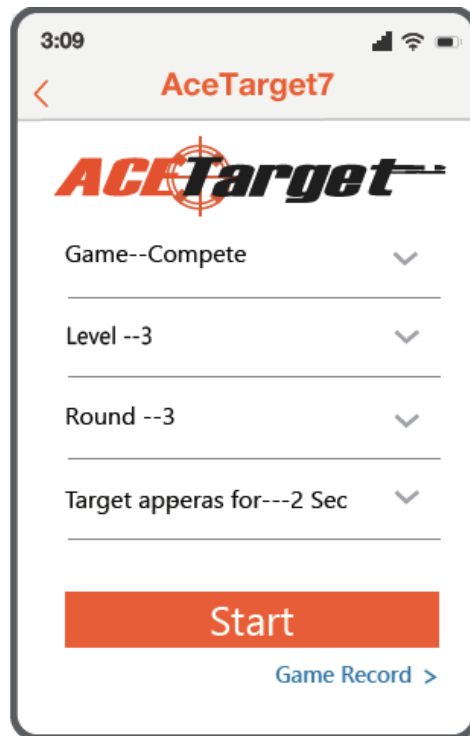
1. Shot Timer:

The Shot Timer game starts after the countdown to 3 2 1 and all target faces rise up. When time is over or all the AceTarget are hit down, means the game is over. The less time the shooter spends to terminate the game, the more accurate it represents.



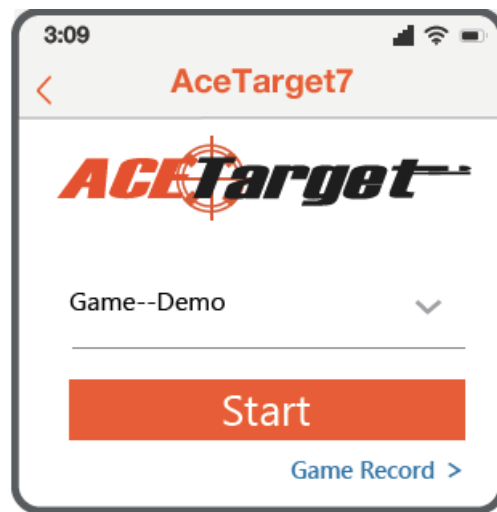
Compete:

Compete game. Only one AceTarget rise up at a me. The higher the LEVEL is, the shorter the rising me will be. One AceTarget-S rise up aer the former target is automatically down or manual hit down by the shooter. The game ends aer all the AceTarget are down in sequence.



Demo:

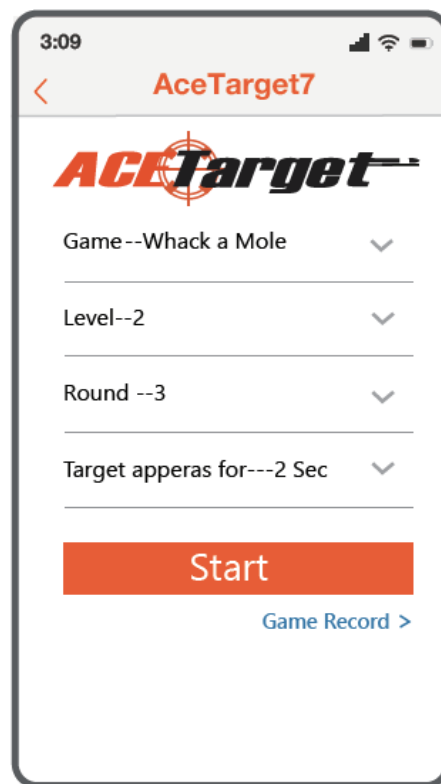
Demonstration mode. The system automatically takes turns to demonstrate 4 games, providing operators to demonstrate the modes.



- When AceTarget-S rise up, a green LED light will be projected on the target face, and a beep will sound to remind the player to start shooting.
- Difficulty and mes settings of each game are adjustable.
- Level: Difficulty, set range 1~5. 1 is the easiest, and 5 is the most difficult. LEVEL=1 : AceTarget-D speed = 1 Move le and right regularly LEVEL=2 : AceTarget-D speed = 2 Move le and right regularly LEVEL=3 : AceTarget-D speed = 3 Move le and right regularly LEVEL=4 : AceTarget-D speed = 2 Move le and right randomly LEVEL=5 : AceTarget-D speed = 3 Move le and right randomly
- Round: This ng range is 1~5. 1 means that all AceTarget-S rise up and fall once. Round 2 means all AceTarget-S rise up and down twice, and so on.
- Hostage: Number of hostages in the rescue game Red target face is on for the hostages, mistakenly hitting the hostage will deduct the points.

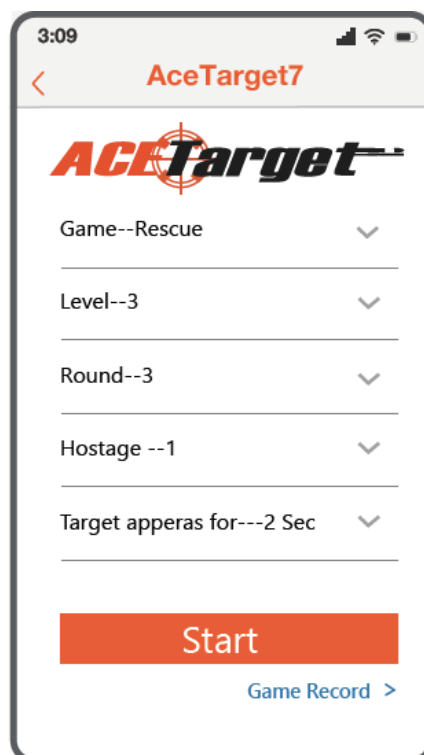
Whack a Mole:

Whack a mole game. When the game starts, the AceTarget-S rises up randomly. According to the difficulty level of the game, there are up to 3 AceTarget-S rising at the same me. AceTarget has a different duration rising up per the difficulty level. The shooter must hit the target down within the duration to get scores.



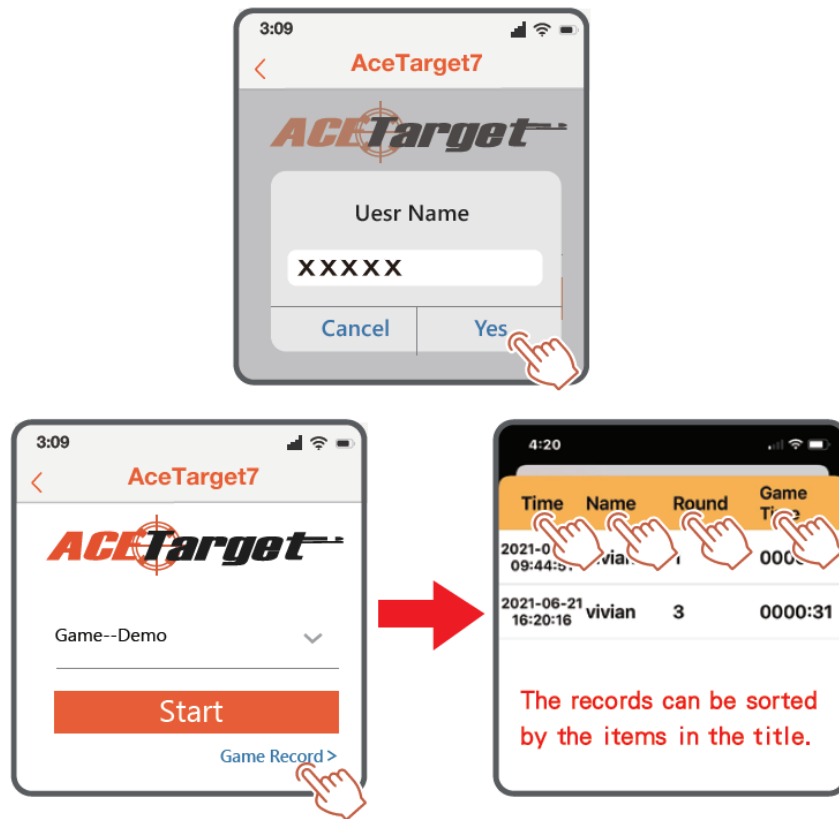
Rescue:

The rescue game is similar to the Whack a Mole game. The hostage roles join the game(Red target face is on for the hostages) mistakenly hitting the hostage will deduct the points.



Game Record

Record points of each game separately. Take Quick Shooting for example as shown below: Aer the the game, enter the User Name and tap Yes to keep the record. Tap the Record on the game page, and all the shooting records can be seen. The records can be sorted by tap tles. The records can be sorted by tap titles.



Warranty

1. 12 months warranty from order date.
2. Warranty not covering,
 - A. Unauthorized dismantling or repair
 - B. Damage from incorrect usage, external force, or liquid intruding inside the product
 - C. Lightning strikes and other damage caused by natural disasters.
 - D. Products without product serial number sticker.

FEDERAL COMMUNICATIONS COMMISSION INTERFERENCE STATEMENT

This equipment has been tested and found to comply with the limits for a Class B digital device, pursuant to part 15 of the FCC Rules. These limits are designed to provide reasonable protection against harmful interference in a residential installation. This equipment generates, uses, and can radiate radio frequency energy and, if not installed and used in accordance with the instructions, may cause harmful interference to radio communications. However, there is no guarantee that interference will not occur in a particular installation. If this equipment does cause harmful interference to radio or television reception, which can be determined by turning the equipment off and on, the user is encouraged to try to correct the interference by one or more of the following measures:

CAUTION

Any changes or modificaons not expressly approved by the grantee of this device could void the user's authority to operate the equipment. This device complies with Part 15 of the FCC Rules. Operation is subject to the following two conditions: (1) this device may not cause harmful interference, and (2) this device must accept any interference received, including interference that may cause undesired operation.

RF exposure warning

This equipment must be installed and operated in accordance with provided instructions and the antenna(s) used for this transmitter must be installed to provide a separation distance of at least 20 cm from all persons and must not be co-located or operating in conjunction with any other antenna or transmitter. End-users and installers must be provided with antenna installation instructions and transmitter operating conditions for satisfying



Documents / Resources

	<p>ACETECH ACE Target App [pdf] User Guide PTG0330-S, PTG0330S, 2AVZWPTG0330-S, 2AVZWPTG0330S, ACE Target App, App</p>
---	--

References

-  [Acetech | Bring You Tech](#)