




ACEKOOL WS1 Bottle Warmer Instruction Manual

[Home](#) » [ACEKOOL](#) » ACEKOOL WS1 Bottle Warmer Instruction Manual 



Contents

- 1 Bottle Warmer WS1
 - 1.1 INSTRUCTION MANUAL
 - 1.2 Instructions
 - 1.3 Specifications
 - 1.4 Control panel
 - 1.4.1 Explanation of settings
 - 1.5 Fast Warming
 - 1.6 Warming Milk
 - 1.7 Heating Food
 - 1.8 Sterilize
 - 1.9 Cleaning
 - 1.10 Descaling
 - 1.11 Common Problems & Solutions
- 2 Documents / Resources
- 3 Related Posts

Bottle Warmer WS1

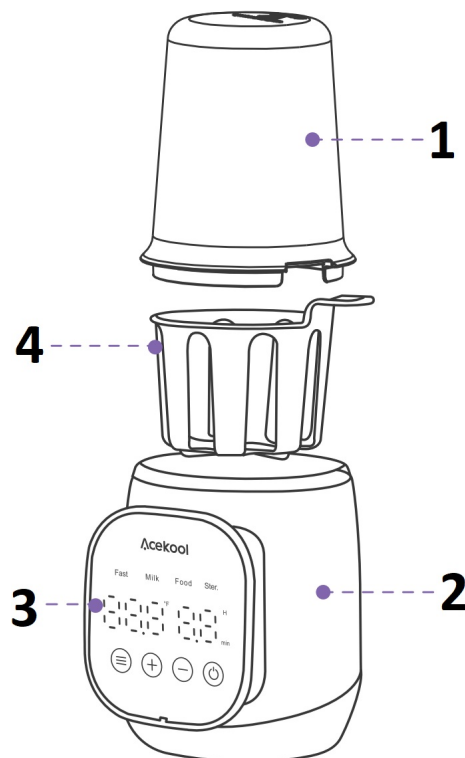
INSTRUCTION MANUAL



Thank you for purchasing Acekool Bottle Warmer. Before operating this unit, please read these instructions completely and keep the manual ready for further reference.

Acekool Your home in sync

Instructions



1. Top-lid
2. Bottle warmer
3. Operation Panel
4. Lift-out basket

Specifications

Voltage: 120V~
Frequency: 60Hz

Rate Power: 400W
Product Capacity: 200ml

Control panel



Explanation of settings



ON/OFF

Press this button to turn on the appliance. The light will signal when it is on.



Function button

Press this button to choose the function mode.
Choice of functions: Fast, Milk, Food, Ster.



Up button

Adjust temperature or time, long-press 2S to restore original settings in standby mode.



Down button

Adjust temperature or time, long press 2S to turn off BEEP sounds in standby mode.

FAST:

Important: Remember to add 40ml distilled water into the warming chamber.

This function is useful for quickly warming milk or water in 2-6 minutes. To indicate the end of the fast-warming process, the yellow light will switch off. After a minute of non-operation, the product will enter standby mode.

- To avoid overheating remove the bottle immediately after the allotted heating time.
- It is important that the lid remains on at all times while using in fast heating mode.

Milk:

Important: Fill the warming chamber to its maximum capacity (160ml) with distilled water.

This function should be used when you want to heat the milk or water slowly and keep it at a certain temperature for a period of up to 24 hours. The screen will display the real-time water temperature.

- It is recommended to keep breast milk warm for no more than 2 hours.
- **Defrosting:** If you need to defrost food, please set the temperature to 104°F.

Food:

Important: Fill the warming chamber to its maximum capacity with distilled water.

This function should be used when you want to heat the baby food slowly and keep it at a certain temperature for a period of up to 2 hours.

The screen will display the real-time water temperature.

Ster.:

Important: Add 40ml of water to the warming chamber.

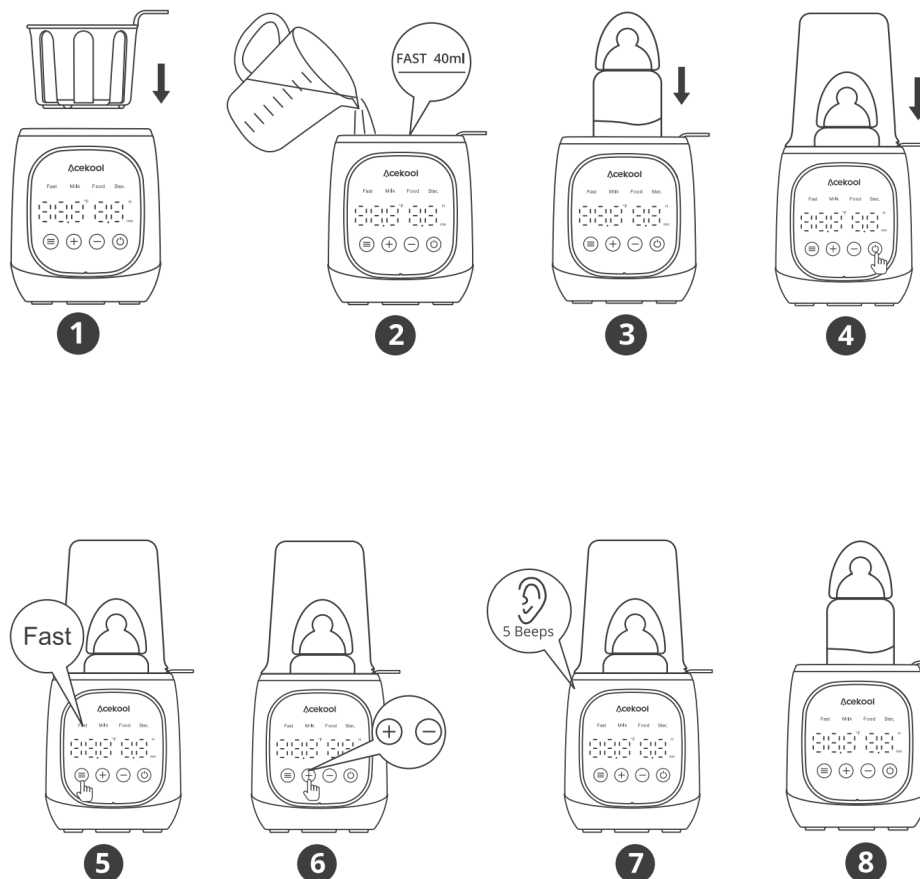
This function is set up with a 10-minute sterilization timer or dry burn automatic shutdown function.

This function should be used to sterilize baby bottles or pacifiers.

- This product will automatically shut down when it is dry boiling.


Caution: When using a bottle to heat milk or breast milk, the bottle needs to be covered with a bottle lid.

Fast Warming



Remove the bottle
immediately

- Place the removable basket in the bottle warmer. Then pour 40ml of distilled water into the bottle warmer. (It is recommended to use distilled water to prevent scaling.)

- Now place the bottle (close the bottle cover) into the bottle warmer and close the lid.
- Select the correct heating time consult the heating chart.
- Select the function button  to move the device into “fast” function mode. To signal it is in this mode the “fast” icon will flash, then adjust heating time. (The default time and temperature for heating milk in this mode are for 2 minutes at 98.6°F.)
- The bottle warmer will kick into operation after the time indicator has flashed twice and beeped once.
- 5 beeps will be heard when the heating time has come to an end (please remove the baby bottle in time after the countdown is over), followed by the yellow indicator coming on as the white indicator goes off. Post this, the product will enter the “pending operation” state indicated by the yellow light going out. After one minute of the “pending operation” state the product will enter “standby mode”.

Please Note:

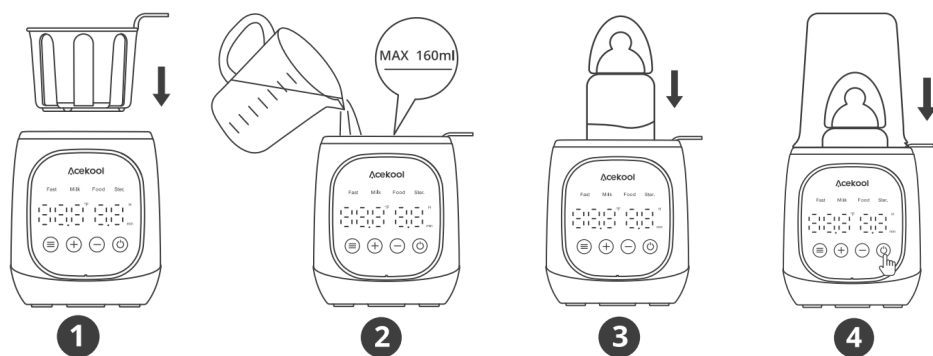
- The adjustable time range is between 1-8 minutes.
- Please put the top lid on when the product is in use, and make sure to remove the bottle in time after the countdown is over.

This reference sheet DOES NOT provide accurate heating times. This is due to variables such as different initial temperature / bottle material / ambient temperature etc. which will all affect the final temperature of the milk.

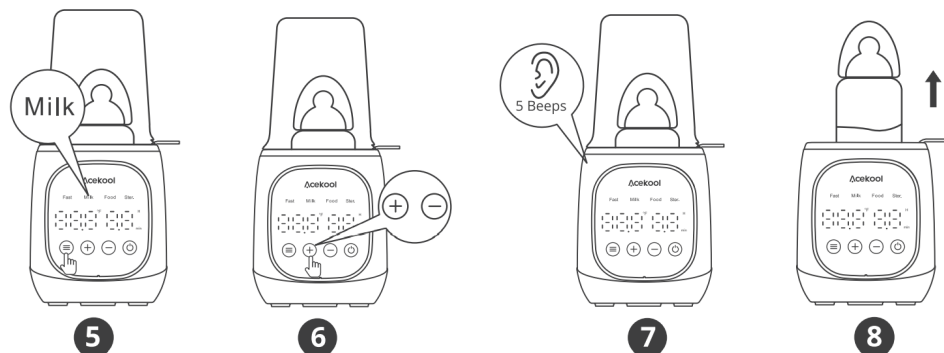
Take out the bottle in time to avoid overheating. If you find the milk is not warm enough, please place the bottle back into the appliance for a maximum of 0.5-1 minute of additional warming.

Reference Chart Only for the Fast Warming Function						
Bottle	Initial Temperature	Add Water	Milk Volume			
			60ml/2oz	120ml/4oz	180ml/6oz	240ml/8oz
Glass	41°F	40ml/1.4oz	2.5 min	4 min	4.5 min	6 min
	68°F		1.5 min	2.5 min	3 min	3.5 min
PP/PPSU	41°F		3 min	4.5 min	5.5 min	6.5 min
	60°F		2.5 min	3 min	4 min	4.5 min

Tips: Lid must be on at all times during the fast warming mode.



Keep warm for use



- Place the removable basket into the bottle warmer.
- Then pour 160ml of distilled water into the bottle warmer up until the maximum scale line (to be found marked on the bottle warmer).
- Place the bottle (close the bottle cover) into the device and cover the lid.
- Select the function button (≡) to move the device into the “Milk” mode function. The “Milk” icon will start flashing, The display indicates that the default milk temperature is 98.6°F.
- Adjust the desired temperature and the bottle warmer will kick into action after the time indicator has flashed twice and 1 beep has been heard.
- The bottle warmer will beep 5 times when the temperature reaches the set temperature, followed by the white indicator will go off and the yellow indicator coming on, then device enter 24H keep warm state.
- **Defrosting:** If you need to defrost food, please place it in the milk mode and set the temperature to 104°F.
- **24H keep warm:** you can preheat the water for formula, no need to wait after mixing.

Please Note:

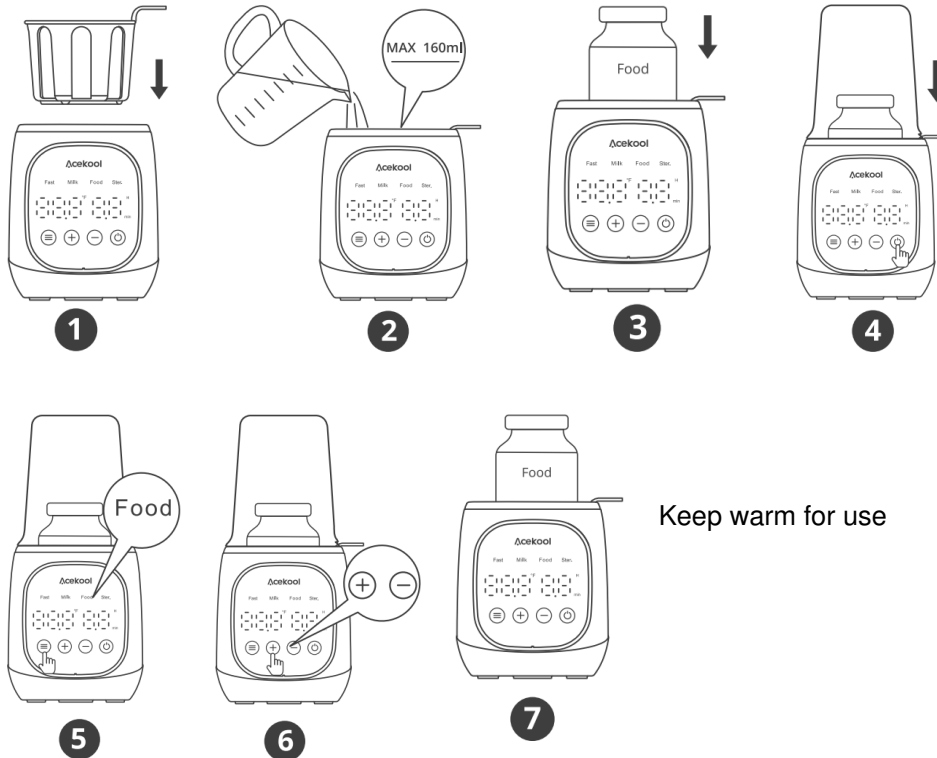
- The adjustable range of the temperature is between 95-140°F.
- Keep warm time is constant for 24 hours. It is recommended to keep breast milk warm for no more than 2 hours.
- When the yellow indicator light , this indicates that the temperature has reached the set temperature. Factors that may result in the yellow light on but the desired temperature not being reached are: the material of the

bottle, the amount of milk, and the starting temperature.

- If the temperature displayed by the device is higher than the temperature you set, this is a normal state, and the actual milk temperature is normal and will not destroy the nutrition of the milk.



Heating Food

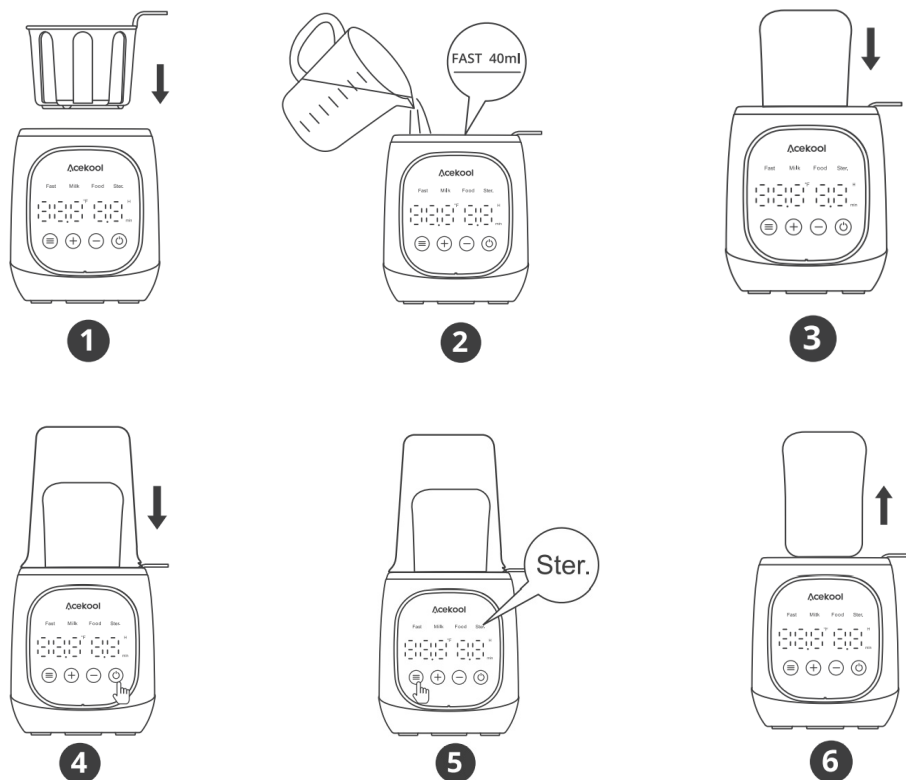


- Place the removable basket into the bottle warmer.
- Then pour 160ml of distilled water into the bottle warmer to the maximum scale line (this is marked on the bottle).
- Place the bottle (close the bottle cover) into the device and cover it with the lid.
- Press the function button (≡) to move the product into the “food” function indicated by the “food” icon flashing.
- Adjust the desired temperature, the display screen indicates that the default food temperature is 158°F and the default heating time is 2 hours (the indicated will flash whilst heating is in the process).
- The bottle warmer will start working after the time indicator flashes twice and “beeped” once.

Please Note:

- The adjustable range of temperature is between 86-176°F.
- Working time is constant 2 hours. When the heated food reaches the set temperature, it will automatically keep warm, and the heating time depends on the material of the food.
- The temperature indicator light always shows the real time water temperature while the product is in operation.

Sterilize



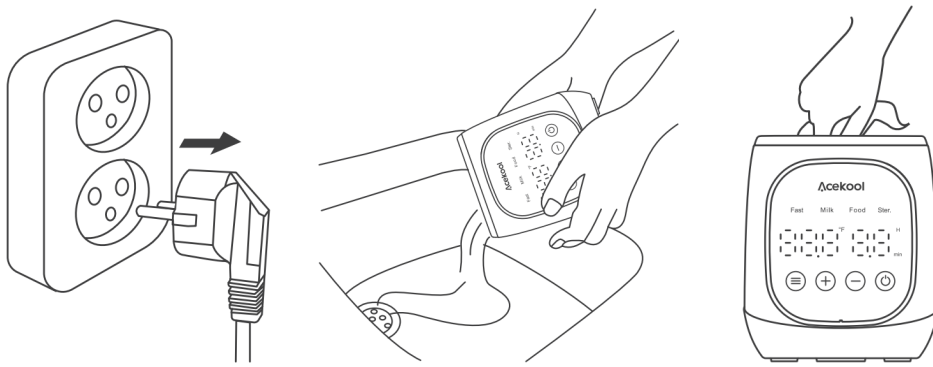
- Place the removable basket into the bottle warmer.
- Then pour 40ml of distilled water into the bottle warmer. (It is recommended to use distilled water to prevent scaling.)
- Put the bottle and nipple upside down into the bottle warmer removable basket. Place the lid on.
- Press the function button (≡) to move the product into the “ster.” function. The “ster.” icon will start flashing. The display screen will indicate that the default temperature is between 212°F steady on and that the default sterilize time is 10 minutes (indicated by flashing).
- The bottle warmer will start working after the time indicator flashes twice and “beeped” once. The machine will automatically shutdown after it has finished.

Please Note:

- The temperature of the “sterilize” function is not adjustable.
- There is a fixed time of 10min after shutdown, not adjustable.
- After the countdown is over, the bottle warmer will beep 5 times after which the device will enter standby mode.

Cleaning

- Unplug the bottle warmer and make sure it has cooled down before cleaning.
- Do not immerse the working base in water whilst cleaning.



- It is recommended to use distilled water to prevent scale. Acetic acid or other descalers can help you clean the scale efficiently.

Descaling

- It is recommended to descale the bottle warmer every four weeks to ensure it continues to work efficiently.
- To do this, mix 10g citric acid cleaner with 200ml/3.4oz of cold water to descale the bottle warmer. Turn on the bottle warmer, select the “Ster.” function then wait for 2-3 minutes after boiling, the descaling will now have been completed.
- Mix 50ml/1.7 oz of white vinegar with 100ml/3.4oz of cold water to descale the bottle warmer. Switch on the bottle warmer, select the “Milk” warming function and wait for 10 minutes. Leave the solution in the bottle warmer until all scales have been dissolved.

Please Note:

- Never let the device dry out.
- Do not use other types of descalers.

Common Problems & Solutions

Q: How do I defrost milk?

A: Please select “Milk” mode and set the temperature to 104°F to defrost.

Q: How do I keep the liquid warm?

A: Select “milk” mode. Put the liquid you are wanting to keep warm into the milk warmer. This will automatically keep it warm for 24 hours after you have set the temperature.

Q: What is the purpose of 24 hour insulation?

A: If you use formula, you can keep the water warm at the desired temperature. This means you can quickly prepare the milk when your child is hungry saving on time (especially useful during night times)

Q: How long does breast milk stay warm?

A: It is recommended to keep breast milk warm for no more than 2 hours.

Q: Does it automatically shut down if the water starts dry boiling?

A: Yes.

Q: How often do I need to change the water?

A: It is recommended to change the water daily and clean the scale every 4 weeks.

Q: Are other brands of milk bottles suitable?

A: Yes, the caliber of our products is 4 in. This means that it is suitable for most brands of milk bottles on the market.

Q: Is it possible to use this product with a baby feeding cup?

A: Yes, you can use the “food” Mode to heat food in a baby feeding cup.

Q: Can glass bottles as well as plastic bottles be used?

A: Yes, both can be used.

Q: Does it have to take 2 hours to heat complementary food?

A: Not necessarily, the normal heating of frozen food is generally 30-40 min, but we cannot determine what type of complementary food you have, so we do not have a fixed time. The product will be heated from the beginning to the set temperature and then kept warm, and will automatically stand by after 2 hours. You can observe whether the temperature is maintained to determine whether the food is finished heating.

Q: If I turn off the audible prompt, how do I know if the milk has finished heating?

A: You can determine by the color of the mode indicator, white means heating is in progress, orange means finished.

Q: Why do I need to cover the baby bottle with a bottle lid when heating it?

A: In order to prevent milk spillage.

Q: If putting an auxiliary straw into the bottle, when is the best time to do so?

A: Do this after the heating is complete. Otherwise, the milk will spill as the temperature rises.



Model: N2T-1


Email: support@acekool.vip

Website: <https://www.acekool.vip>

Made in China



Documents / Resources

 The image shows the front cover of the instruction manual for the Acekool Bottle Warmer WS1. It features the Acekool logo at the top, the product name "Bottle Warmer WS1", and a line drawing of the device. Below the drawing, there is a small line of text: "Read and follow the instructions carefully before using the product. Please keep this manual for future reference." The entire cover is enclosed in a thin black border.	<p>ACEKOOL WS1 Bottle Warmer [pdf] Instruction Manual WS1 Bottle Warmer, WS1, WS1 Warmer, Bottle Warmer, Warmer</p>
---	---