



# Acebaff 241 Wireless Keyboard and Mouse Combo User Manual

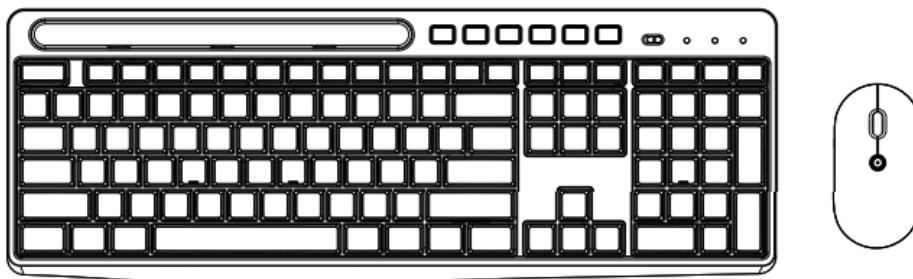
[Home](#) » [Acebaff](#) » Acebaff 241 Wireless Keyboard and Mouse Combo User Manual 

## Contents

- 1 [Acebaff 241 Wireless Keyboard and Mouse Combo](#)
- 2 [Product Specifications](#)
- 3 [Product Usage Instructions](#)
- 4 [Important Notes](#)
- 5 [FAQ](#)
- 6 [BOX CONTENT](#)
- 7 [SETUP](#)
- 8 [INDEPENDENT MULTIMEDIA KEYS](#)
- 9 [FEATURES](#)
- 10 [CONSIDERATIONS](#)
- 11 [SOLUTION TO CONNECTION FAILURES](#)
- 12 [SOLUTION TO PROBLEMS OF WAKING COMPUTER FROM SLEEP MODE BY KEYBOARD](#)
- 13 [SOLUTION TO PROBLEMS OF WAKING COMPUTER FROM SLEEP MODE BY MOUSE](#)
- 14 [CORRECT DISPOSAL OF THIS PRODUCT](#)
- 15 [FCC STATEMENT](#)
- 16 [Documents / Resources](#)
  - 16.1 [References](#)

# Acebaff

**Acebaff 241 Wireless Keyboard and Mouse Combo**



## Product Specifications

- Wireless Keyboard and Mouse Set
- **Wireless Transmission:** 2.4 GHz
- **Transmission Distance:** 10 meters
- **Battery Requirement:** Keyboard – 1.5 V AAA x 1, Mouse – 1.5 V AAA x 2

## Product Usage Instructions

### Setup

Fetch the wireless keyboard and mouse. Remove the USB receiver from the mouse battery compartment.

### Keyboard Setup

1. Insert a 1.5 V AAA battery into the keyboard following the positive and negative signs.
2. Turn on the power switch of the keyboard.

### Mouse Setup

1. Insert two 1.5 V AAA batteries into the mouse according to the positive and negative signs.
2. Turn on the power switch of the mouse.

### Connection

1. Plug the USB receiver into the USB port of your computer.
2. The mouse and keyboard are ready to work after the driver is automatically installed on the computer.

## Important Notes

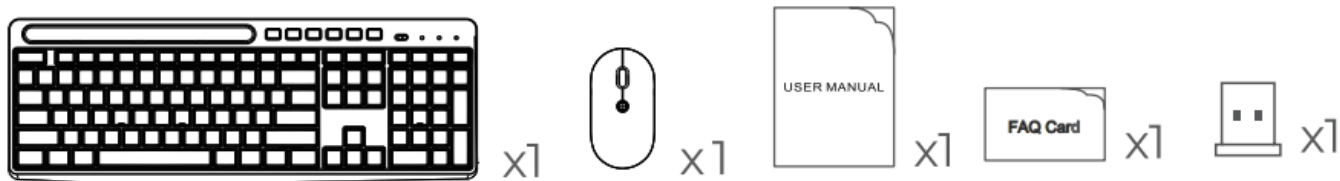
1. **Battery Usage:** Use only 1.5 V AAA batteries to prevent damage to internal elements. Avoid using excessive-voltage batteries. If the product will be unused for a long time, remove the battery to prevent corrosion.
2. **Wireless Transmission:** The product adopts 2.4 GHz wireless transmission with a 10-meter range. The distance may be affected by obstacles and low battery levels.
3. **Initial Use:** For the first use, the product may fail to work due to prolonged inactivity. Try pairing again if connection errors occur.

## FAQ

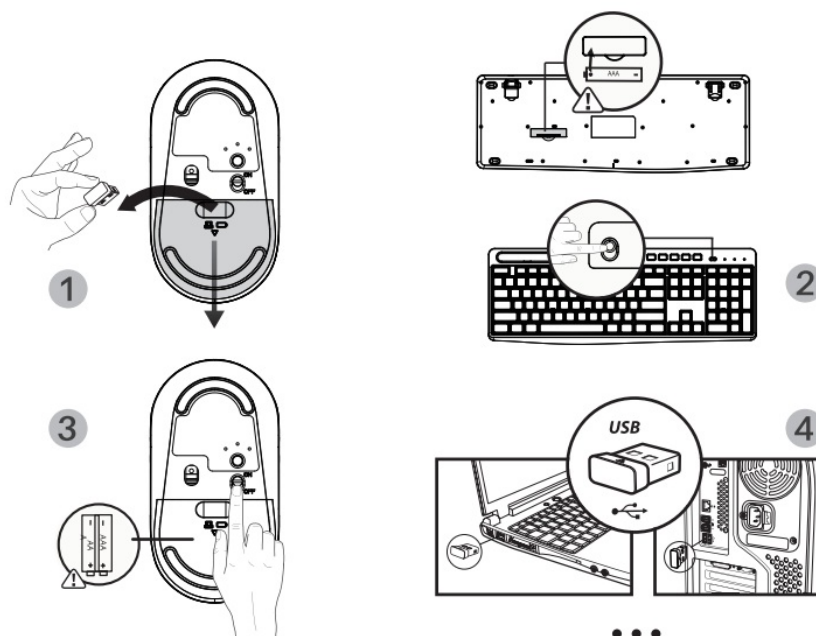
- **What should I do if the product fails to work after initial setup?**

If the product does not function properly, repeat the setup procedures for pairing. If issues persist, contact our service team at [abcsm001@126.com](mailto:abcsm001@126.com) for assistance.

## BOX CONTENT

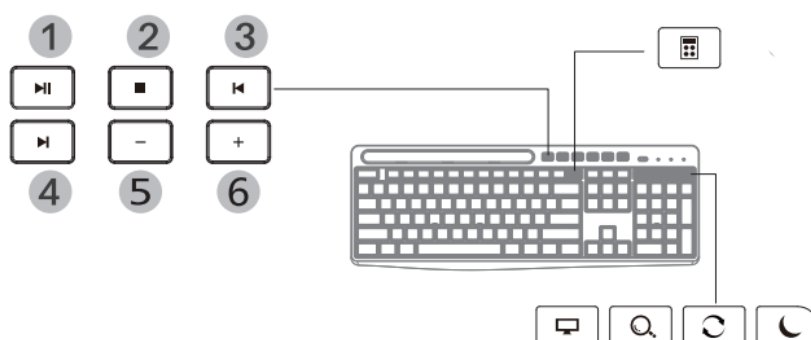


## SETUP



1. Fetch the wireless keyboard and mouse. Take out the USB receiver from the mouse battery compartment.
2. Insert one 1.5 V AAA battery into the keyboard according to the positive and negative sign. And turn on the power switch of the keyboard.
3. Insert two 1.5 V AAA batteries into the mouse according to the positive and negative sign. And turn on the power switch of mouse.
4. Plug the USB receiver into the USB port of your computer.
5. The mouse and keyboard are ready to work after the driver is installed automatically on the computer.

## INDEPENDENT MULTIMEDIA KEYS



1. Play/ Pause
2. Stop
3. Previous
4. Next track

5. Volume –

6. Volume +

- Seacomputer
- Refresh
- Dormancy

## FEATURES



1. The mouse and keyboard share a common receiver. The receiver is in the battery compartment at the bottom of the mouse.
2. Adjustable mouse DPI levels: 800-1200-1600 (default setting is 1200).
3. It has automatic Sleep mode and Wake-up mode. When the combo hasn't been used for 8 min, it will enter sleep mode. Press any button to wake up the combo. If it will be unused for a long time, turn off the power switch to save power.
4. Compatibilities: Windows XP / VISTA / 7 / 8 / 10/11; Mac OS (Functions of combination keys are not available for Mac OS).

## CONSIDERATIONS

1. Use a 1.5 V AAA battery only. To prevent damage to internal elements, avoid using excessive-voltage batteries. If the product will be unused for a long time, take out the battery to prevent from corrosion.
2. The product adopts the 2.4 GHz wireless transmission with a 10-meter transmission distance. The distance may be shortened for big obstructions and low battery.
3. For the first use, the product may fail to work (connection error, etc.) for it has been unused for a long time. Try pairing again.

## SOLUTION TO CONNECTION FAILURES

### Keyboard

1. Take out the battery from the keyboard and the receiver from the computer.
2. Reinstall the battery into the keyboard, and plug the receiver into the USB port of the computer.
3. Turn on the keyboard's power switch, which should be within 20cm away from the receiver. Press and hold the "" and "" keys together to pair again.

### Mouse

1. Take out the battery from the mouse and the receiver from the computer.
2. Reinstall the battery into the mouse, and plug the receiver into the USB port of the computer.
3. Turn on the power switch of the mouse, which should be within 20cm away from the receiver. Press and hold the Right button and Scroll button together to pair again.

**Note:** If the above solution doesn't help, repeat the above procedures to pair again. If it still cannot work, please contact our service team to work for you. ([abcsm001@126.com](mailto:abcsm001@126.com))

## **SOLUTION TO PROBLEMS OF WAKING COMPUTER FROM SLEEP MODE BY KEYBOARD**

Please verify that your device is allowed to wake the computer by following steps :

1. Open the Keyboard control panel.
  - In Windows Vista or Windows 7 and later versions, Click Start type keyboard in the Start Search box, and then click Keyboard or Microsoft Keyboard in the Programs list.
  - In Windows XP and earlier versions, click Start, click Run, type Control keyboard, and then click OK.
3. Click the Hardware tab, and then click Properties.
4. Click the Change Settings button (Note: This step requires Administrator access)
5. Click the Power Management tab, and then verify that the Allow this device to wake the computer is enabled.
6. Click OK. and then click OK again.

## **SOLUTION TO PROBLEMS OF WAKING COMPUTER FROM SLEEP MODE BY MOUSE**

More Methods for Troubleshoot problems waking computer from sleep mode, please refer to :

<https://support.microsoft.com/en-us/topic/troubleshoot-problems-waking-computer-from-sleep-mode-6cf5b22f-5111-92c3-4a28e>

## **CORRECT DISPOSAL OF THIS PRODUCT**

### **(Waste Electrical & Electronic Equipment)**

- This Marking shown on the product or its literature, indicate that it should not be disposed with other household wastes at the end of its working life.
- To prevent possible harm to the environment or human health from uncontrolled waste disposal, please separate this from other types of wastes and recycle it responsibly to promote the sustainable reuse of material resources.
- Household user should contact either the retailer where they purchased this product, or their local government office, for details of where and how they can take this item for environmentally safe recycling.
- Business users should contact their supplier and check the terms and conditions of the purchase contract. This product should not be mixed with other commercial wastes for disposal.

## **FCC STATEMENT**

Any Changes or modifications not expressly approved by the party responsible for compliance could void the user's authority to operate the equipment. This device complies with part 15 of the FCC Rules. Operation is subject to the following two conditions:


1. This device may not cause harmful interference, and
2. this device must accept any interference received, including interference that may cause undesired operation.

## **FCC RADIATION EXPOSURE STATEMENT**

This equipment complies with FCC radiation exposure limits set forth for an uncontrolled environment.

---

## Documents / Resources

	<a href="#">Acebaff 241 Wireless Keyboard and Mouse Combo</a> [pdf] User Manual 241 Wireless Keyboard and Mouse Combo, 241, Wireless Keyboard and Mouse Combo, Keybo ard and Mouse Combo, Mouse Combo, Combo
---	--

## References

- [User Manual](#)

[Manuals+](#), [Privacy Policy](#)

This website is an independent publication and is neither affiliated with nor endorsed by any of the trademark owners. The "Bluetooth®" word mark and logos are registered trademarks owned by Bluetooth SIG, Inc. The "Wi-Fi®" word mark and logos are registered trademarks owned by the Wi-Fi Alliance. Any use of these marks on this website does not imply any affiliation with or endorsement.