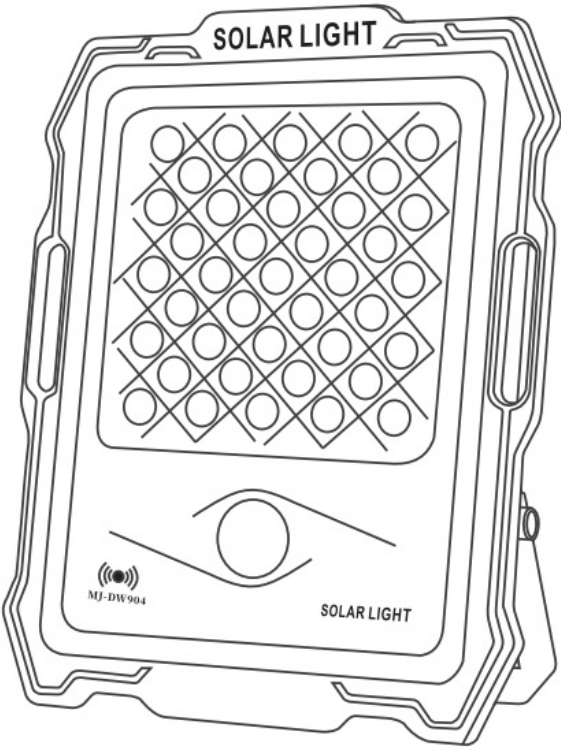
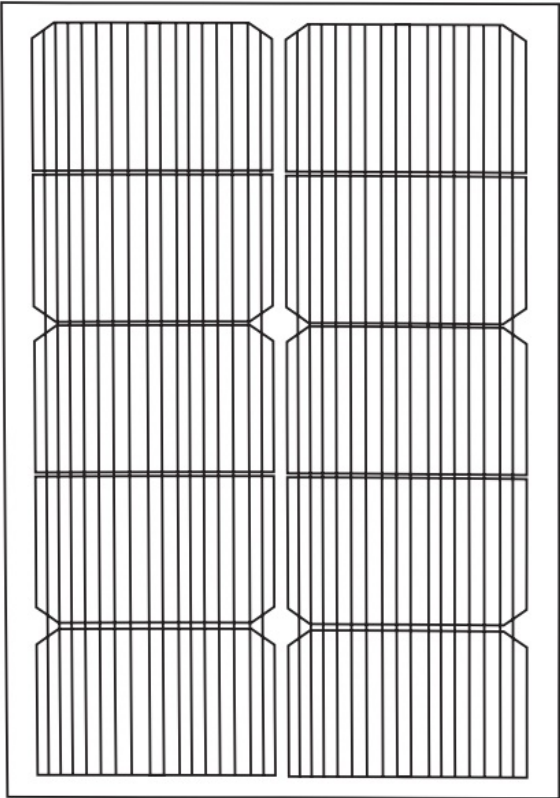


ACDC DYNAMICS MJ-01-100W Lighting Camera Security Floodlight User Manual

[Home](#) » [ACDC DYNAMICS](#) » ACDC DYNAMICS MJ-01-100W Lighting Camera Security Floodlight User Manual 

ACDC DYNAMICS MJ-01-100W Lighting Camera Security Floodlight



Contents

- [1 Operating Instructions](#)
- [2 Installing](#)
- [3 Key Instruction of Remote Control](#)
- [4 Monitor Configure Network](#)
- [5 Monitor Configuration Network](#)
- [6 Installing](#)
- [7 Functional Specification](#)
- [8 Important Notes](#)
- [9 Documents / Resources](#)
- [10 Related Posts](#)

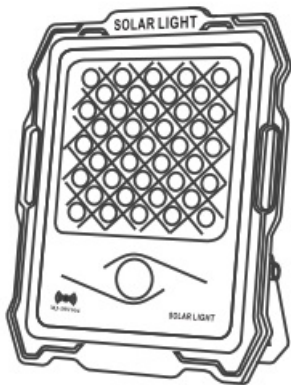
Operating Instructions

Packing List

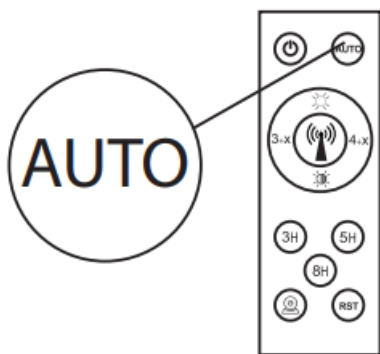
1. Lamp Cap
2. Solar Panel
3. Remote control
4. Installing Support
5. Screws
6. Operating Manual

Installing

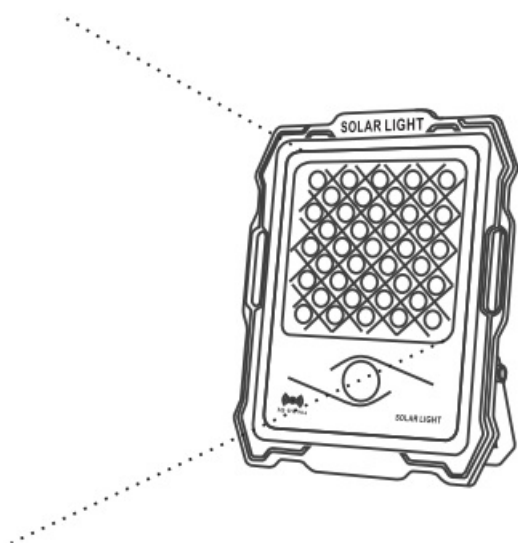
Light-control Detection.



take out lamp cap

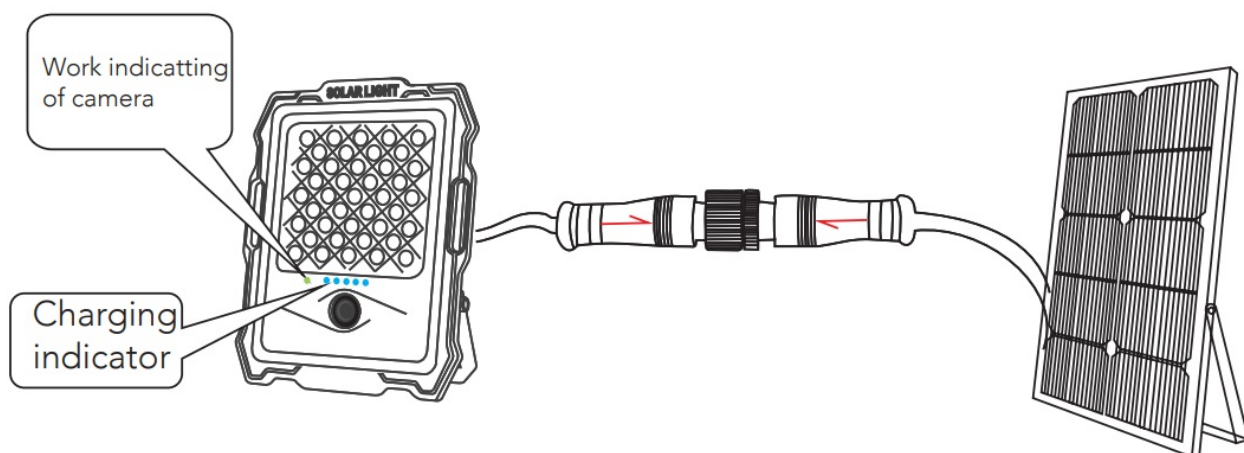


Press the key [AUTO]



The light turn on automatically

Then, tightening the waterproof wire and placing the solar panel towards the sunlight, the light will turn off automatically and the charging indicator will flash regularly. It means the light control functions is working well.



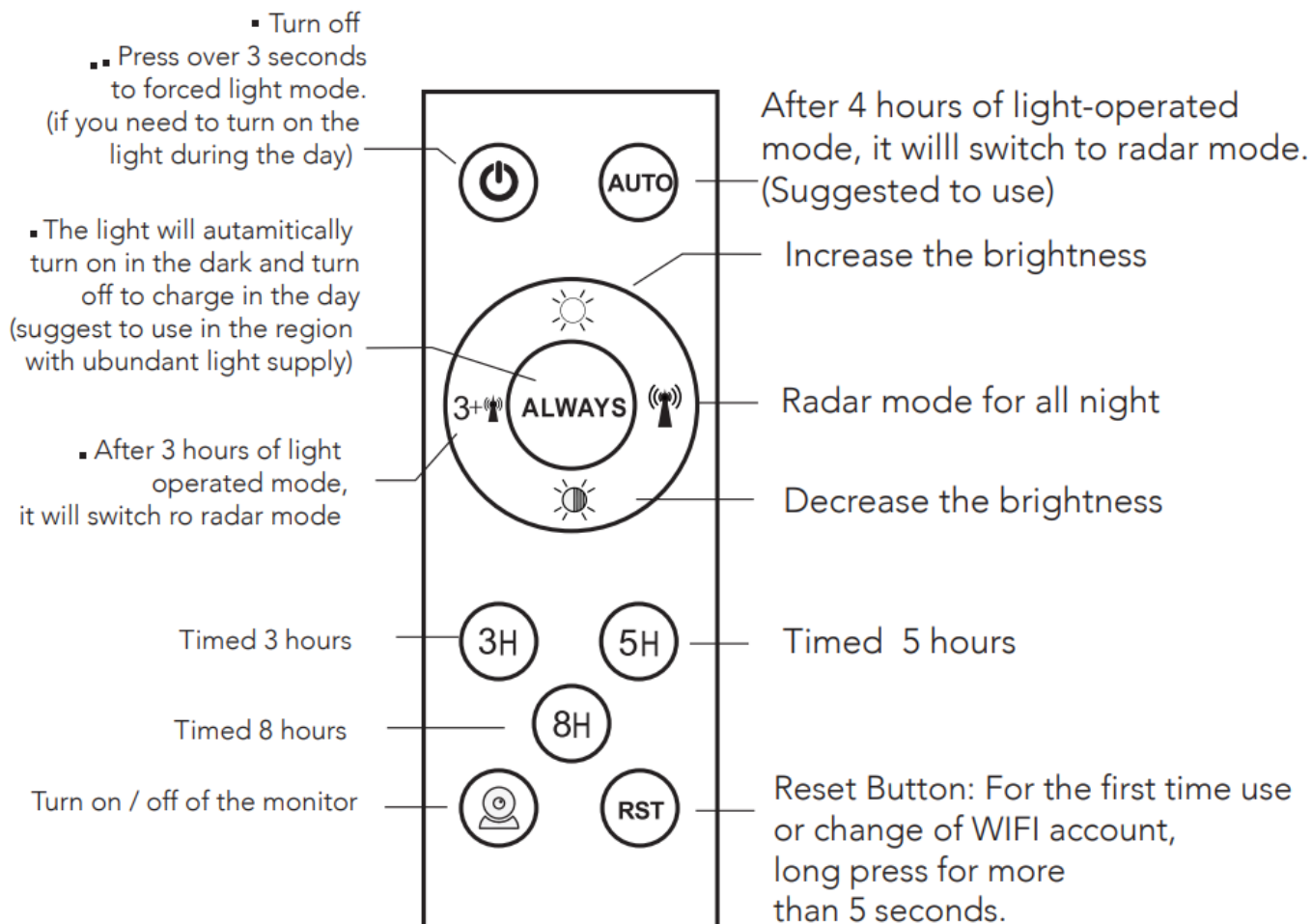
(Please tighten the wire in the direction of the arrow)

Key Instruction of Remote Control

Auto mode

Tightening the waterproof wire and pressing the key "AUTO", the light will automatically turn on for 4 hours in the dark. After 4 hours of light-operated mode, it will switch to radar mode. (The remote control has memory function, you can set only once)

Remote- Control the specified functions are shown below.



Important Notes

1. Please do not connect 220V AC to avoid damaging the solar lamp.
2. Please do not disamble the lamp to avoid affecting the warranty.
3. Please clean dust on the solar panel surface every 3 months to avoid affecting the power generated efficiency.

Monitor Configure Network

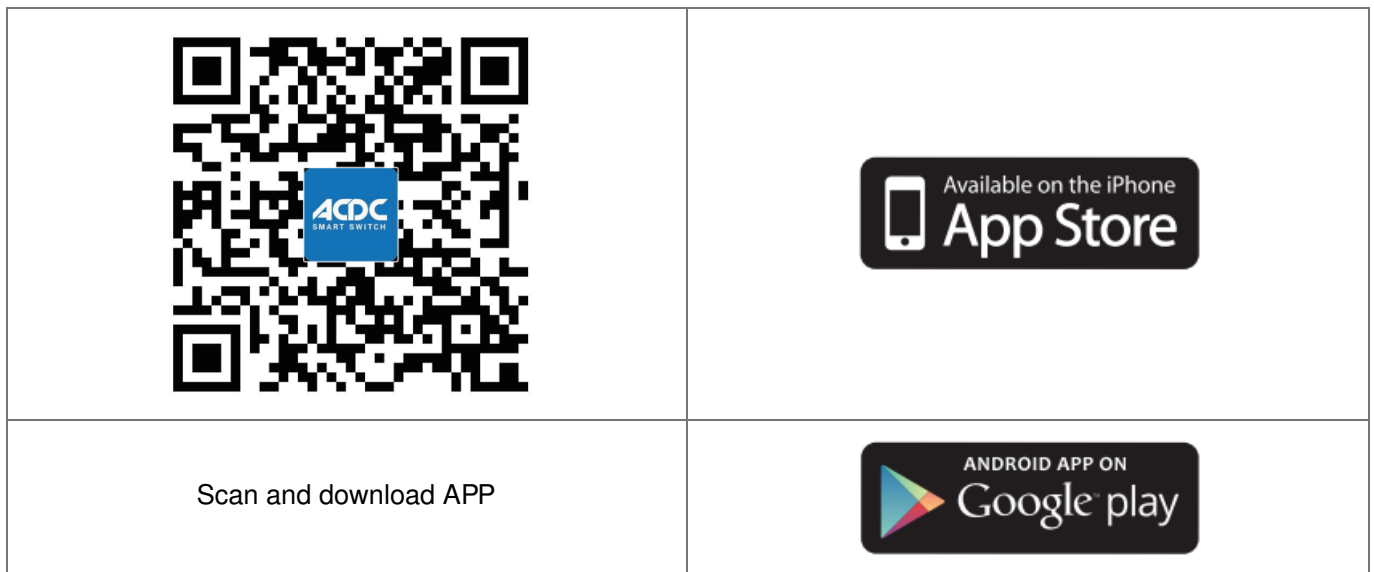
ONE: Connect WIFI

Connect WIFI with your mobile phone, and, make sure the network signal is good

Tips: please make sure the lamp, cellphone and WIFI are within (3 meters during configuring network)

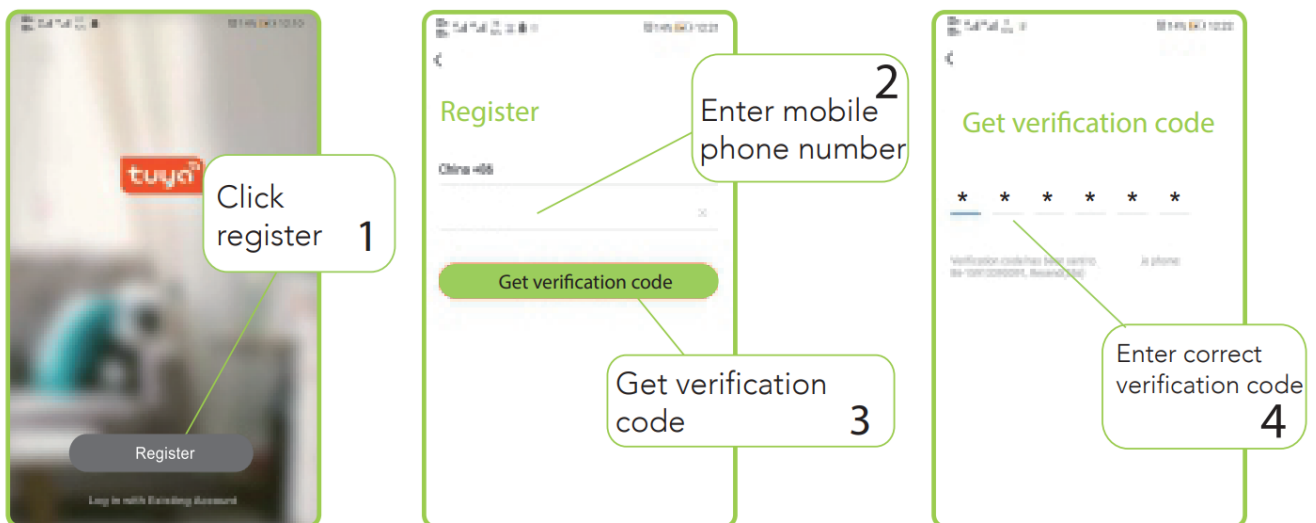
TWO: Download "ACDC Smart App"

scan QR code at right right to get the APP, or search “ACDC Smart App” in App Store or Google play (Tips: Available for Android and IOS)



THREE: Register APP

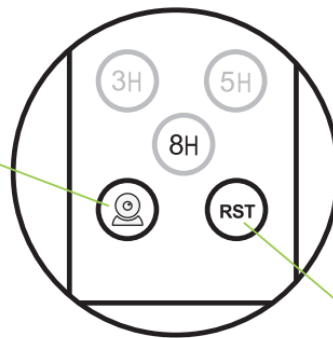
please use the cellphone number or email address to register an account in“ACDC Smart App



FOUR: Turn on the monitor switch

Monitor Switch: Press the button then red indicator light will turn on. the light source will flash twice in the meantime. After 25 seconds, you will hear the voice prompt "the system Start-up, please configure network"

5



Reset: pressing over 5 seconds then you will hear " Dong-dong-dong" the light source will flash twice in the meantime. It indicates the monitor has been reset successfully.

6

Monitor Configuration Network

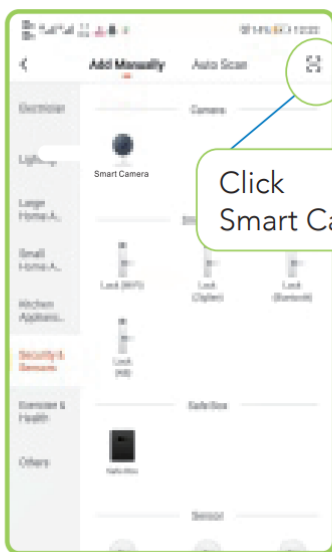
FIVE: Add Device

Open the APP and follow the steps below



Click Add Device

7



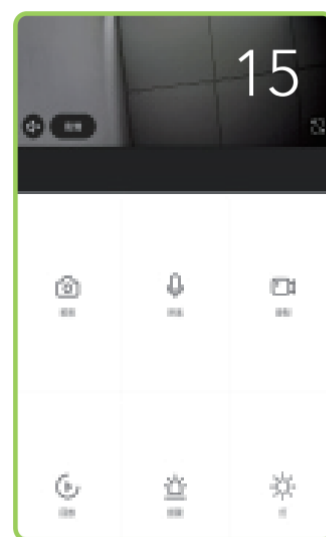
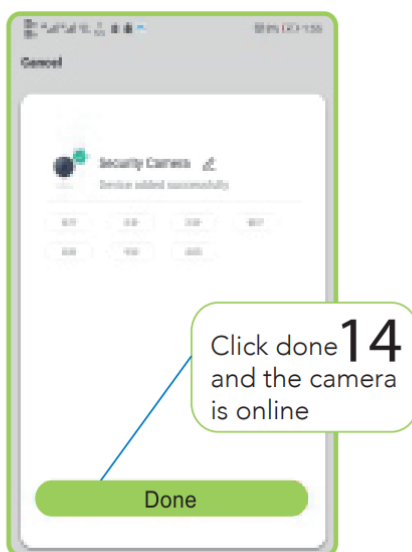
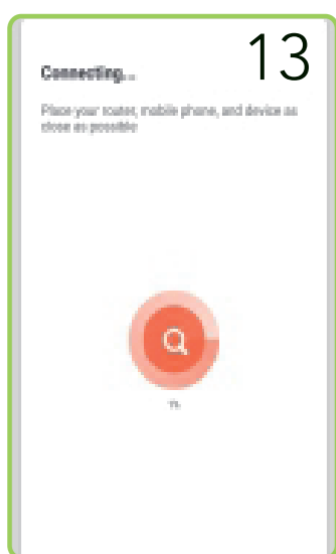
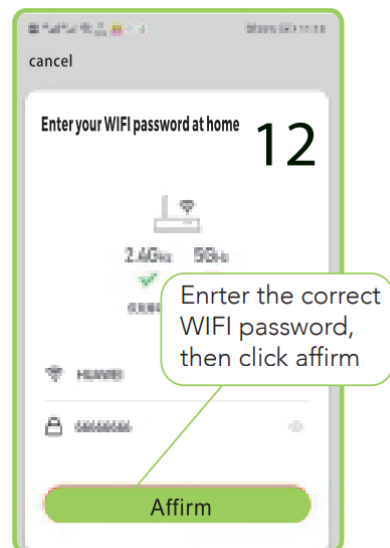
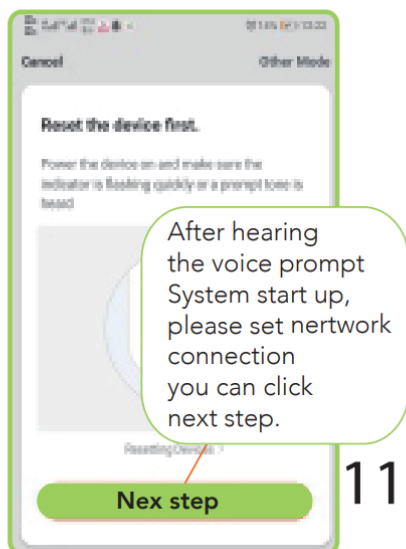
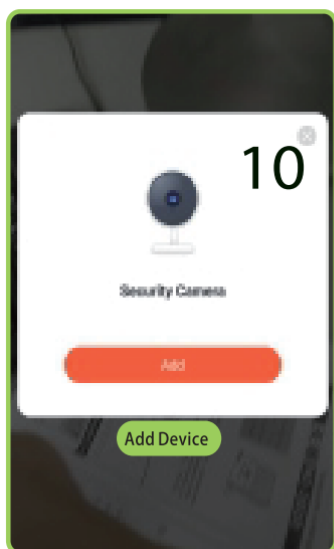
Click Smart Camera

8



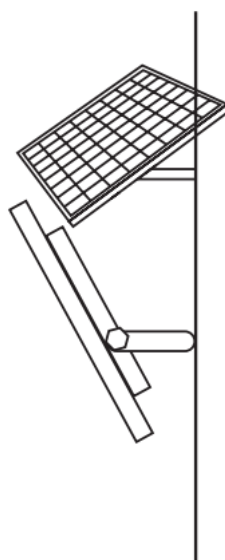
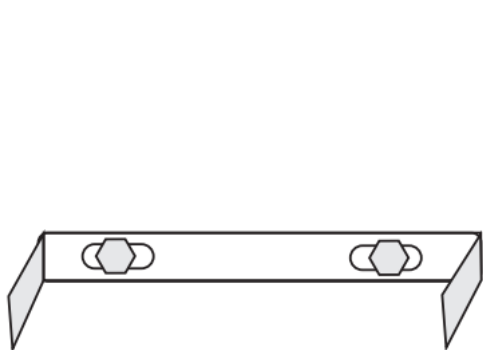
9

Scan the QR code



Installing

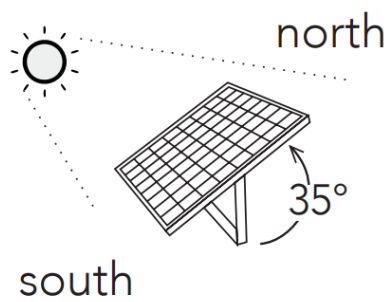
Fix the product on the wall with expansion screws. The installation height is suggested to be 3-5 meters.



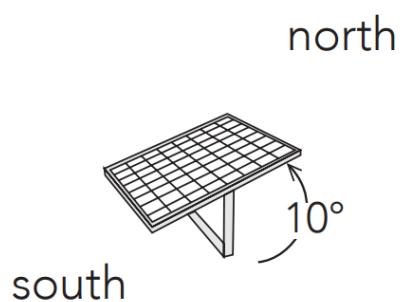
solar panel

Lamp cap

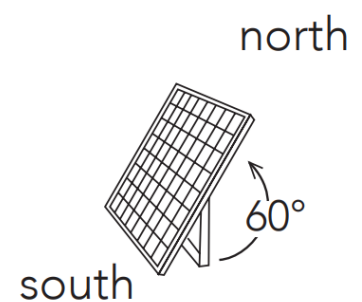
Make sure the solar panels are installed at the correct angle and they will not be blocked by the obstacles from the sunlight.



100% charging
efficiency



75% charging
efficiency



50% charging
efficiency

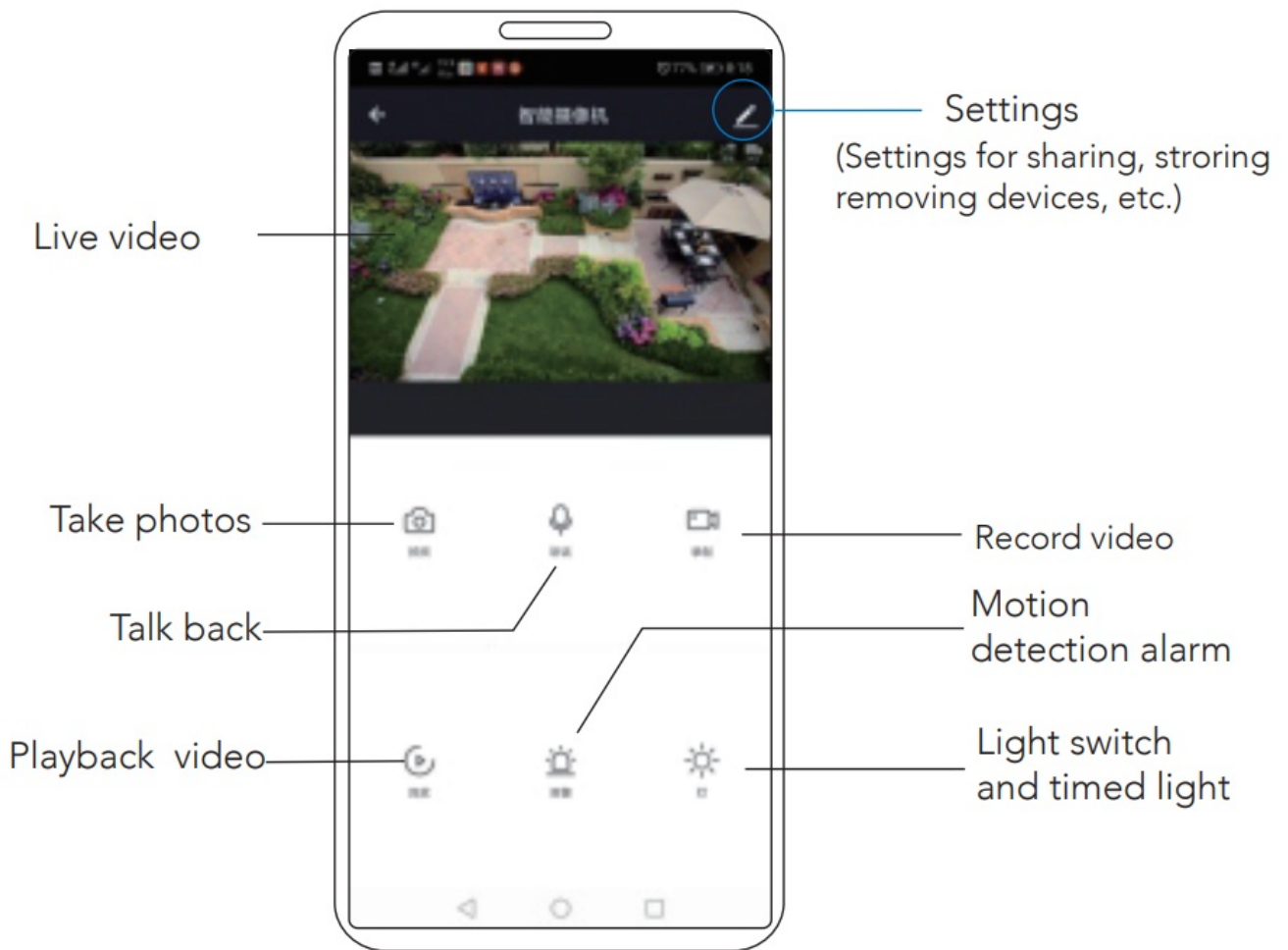


Tips:

1. Installation direction of the solar panel is 5-10 degrees south to west, and angel of 35 degrees with the horizontal place.
2. Please install the solar panel in the sun direction to avoid affecting the power generation efficiency.
3. Please ensure the installation is stable.

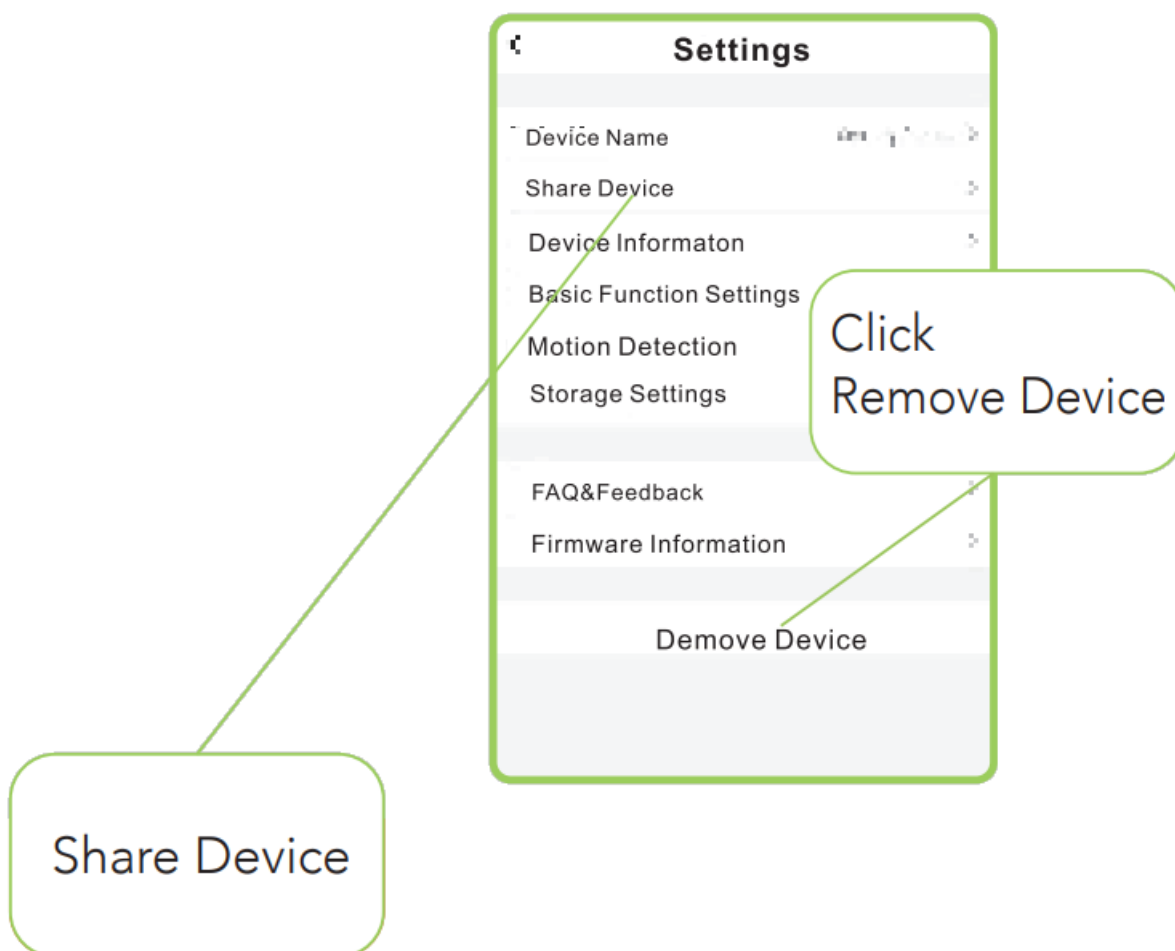
Functional Specification

Main function of APP

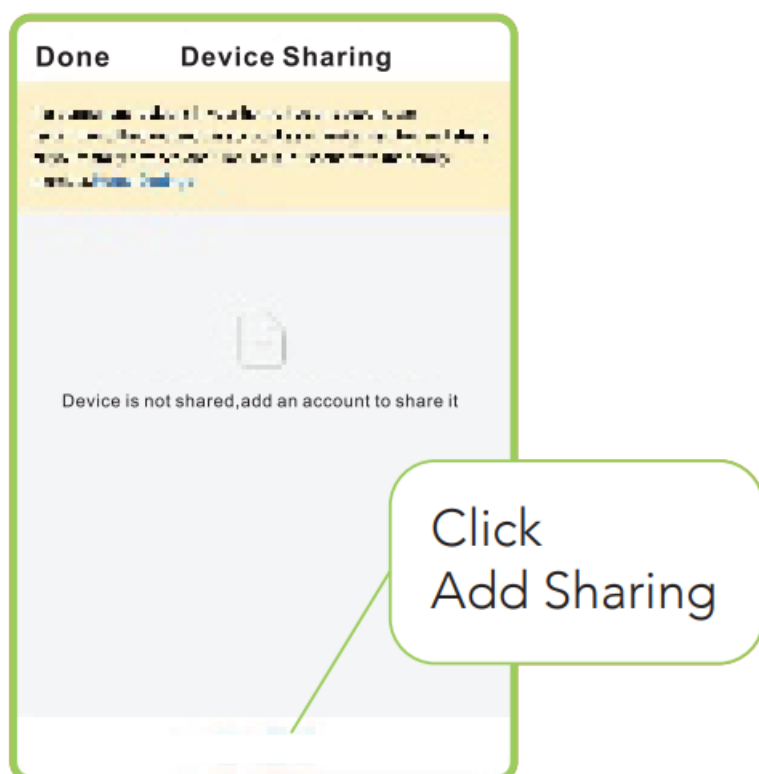


Other Functions

Change username. When changes the username you should remove device in settings. After successfully removed, you can use other username to log in



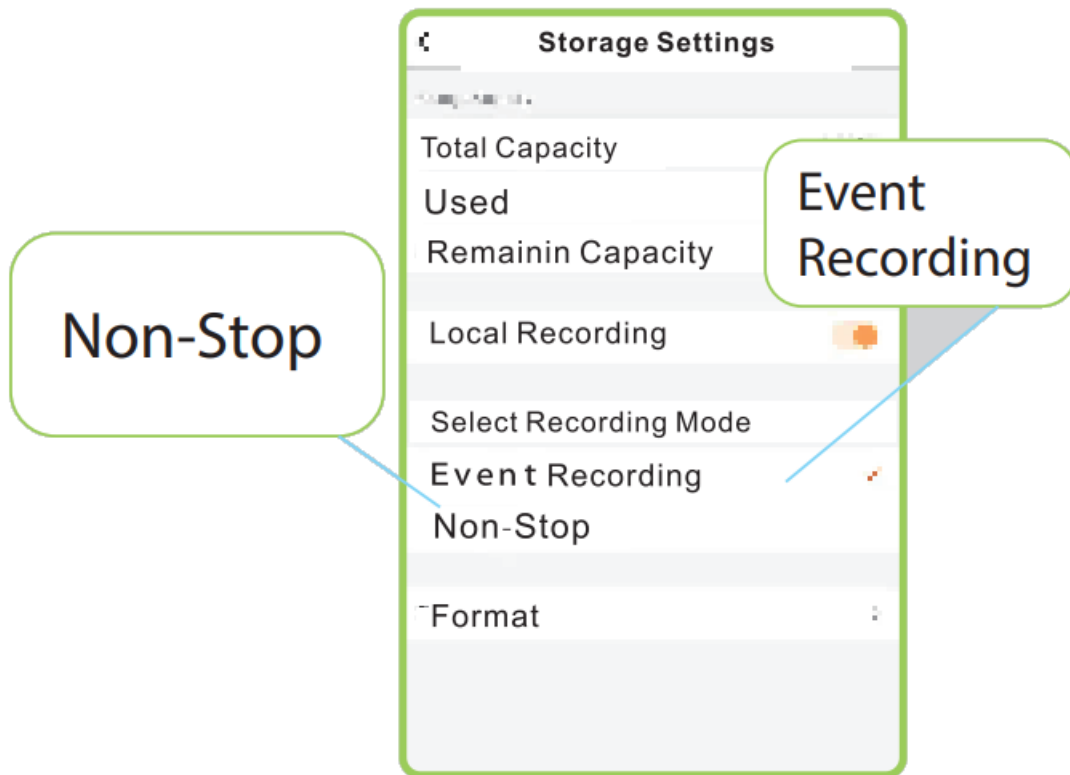
Share device, When shares device to others, the shared user should register an account in “ACDC Smart App”the master user can add the account of the shared user in settings.



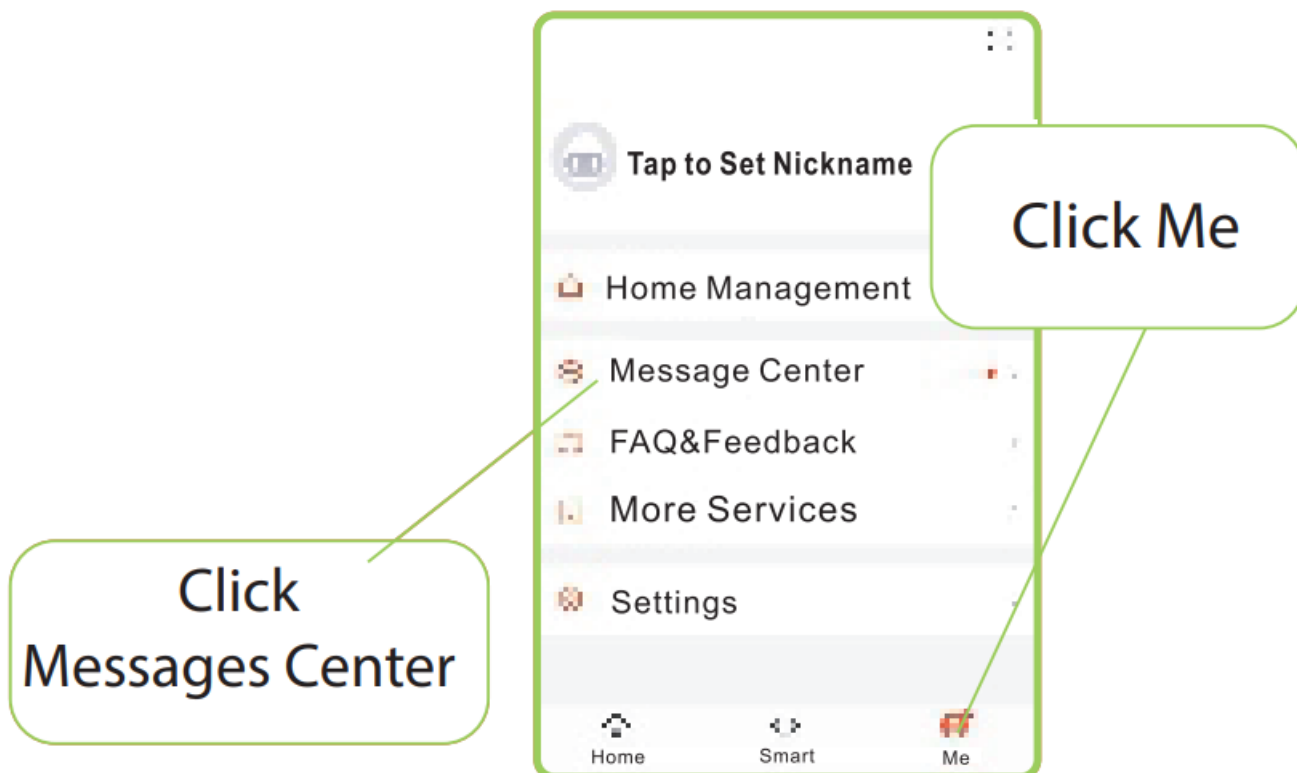
Important Notes

Storage settings. Recording mode includes “even recording” and “non- stop” You can select different mode according to your needs.

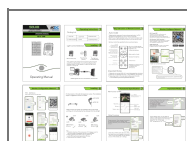
it is suggesrted to select “event recording” mode because it save electricity.



Motion detection alarm. You can select low medium or high sensitivity according to your needs. Checking motion detection alarm information, please click “Me” in main page then “message center” and “Alarm”.



Documents / Resources



[ACDC DYNAMICS MJ-01-100W Lighting Camera Security Floodlight](#) [pdf] User Manual
MJ-01-100W Lighting Camera Security Floodlight, MJ-01-100W, Lighting Camera Security Floodlight, Security Floodlight, Floodlight