

ACDC
DYNAMICS
LEDWPT8-109
T8 LED
Weatherproof
Linear Lights



ACDC Dynamics LEDWPT8-109 T8 LED Weatherproof Linear Lights Instruction Manual

[Home](#) » [ACDC DYNAMICS](#) » ACDC Dynamics LEDWPT8-109 T8 LED Weatherproof Linear Lights Instruction Manual 

Contents

- [1 ACDC Dynamics LEDWPT8-109 T8 LED Weatherproof Linear Lights](#)
- [2 Product Usage Instructions](#)
- [3 FAQs](#)
- [4 Features](#)
- [5 Specification](#)
- [6 ASSEMBLING INSTRUCTIONS](#)
- [7 BRANCH CONTACT DETAILS](#)
- [8 Documents / Resources](#)
 - [8.1 References](#)
- [9 Related Posts](#)



ACDC Dynamics LEDWPT8-109 T8 LED Weatherproof Linear Lights



Product Usage Instructions

- Operation:

- Turn on the power source.
- The LED light should illuminate, providing bright and efficient lighting.
- If the light does not turn on, double-check the wiring connections.
- **Maintenance:**
 - Regularly clean the LED light fixture to remove dust and debris.
 - Check for any signs of wear or damage and replace components if necessary.

FAQs

- **Q: How can I troubleshoot if the LED light is flickering?**
 - **A:** Flickering may be due to loose connections or incompatible dimmer switches. Check connections and try a different switch if needed.
- **Q: Can I use this LED light outdoors?**
 - **A:** This LED light is designed for indoor use only. Outdoor usage may damage the product.

Features

- Equipped with protection rubber gland and nylon cover protector
- **Wiring specification:**
 - **only use:** H07RN-3 x 1.0mm?
- **Degree of protection:** IP65.
- Suitable for ceiling mount or suspended installation.
- **Wattage:** 1x8W, 2x8W, 1x18W, 2x18W, 1x22W, 2x22W.
- **Operating voltage:** AC220-240 Volts/50Hz.
- **Lamp type:** 18.
- Luminaire Class luminaire.

APPLICATIONS:

- **Suitable for usage at:**
 - Outdoor and moist environments.
 - Indoor.


Safety Notice:

- Electrical work must always be done by a qualified person.
- Disconnect the luminaire from the mains supply, and let the lamp cool down, before you replace the lamp.
- Never touch the lamp when the power is turned on.
- In case of lamp failure, disconnect the luminaire from the main supply. Do not attempt to repair the Luminaire by yourself.
- Repair work must only be done by a technician/customer service person.

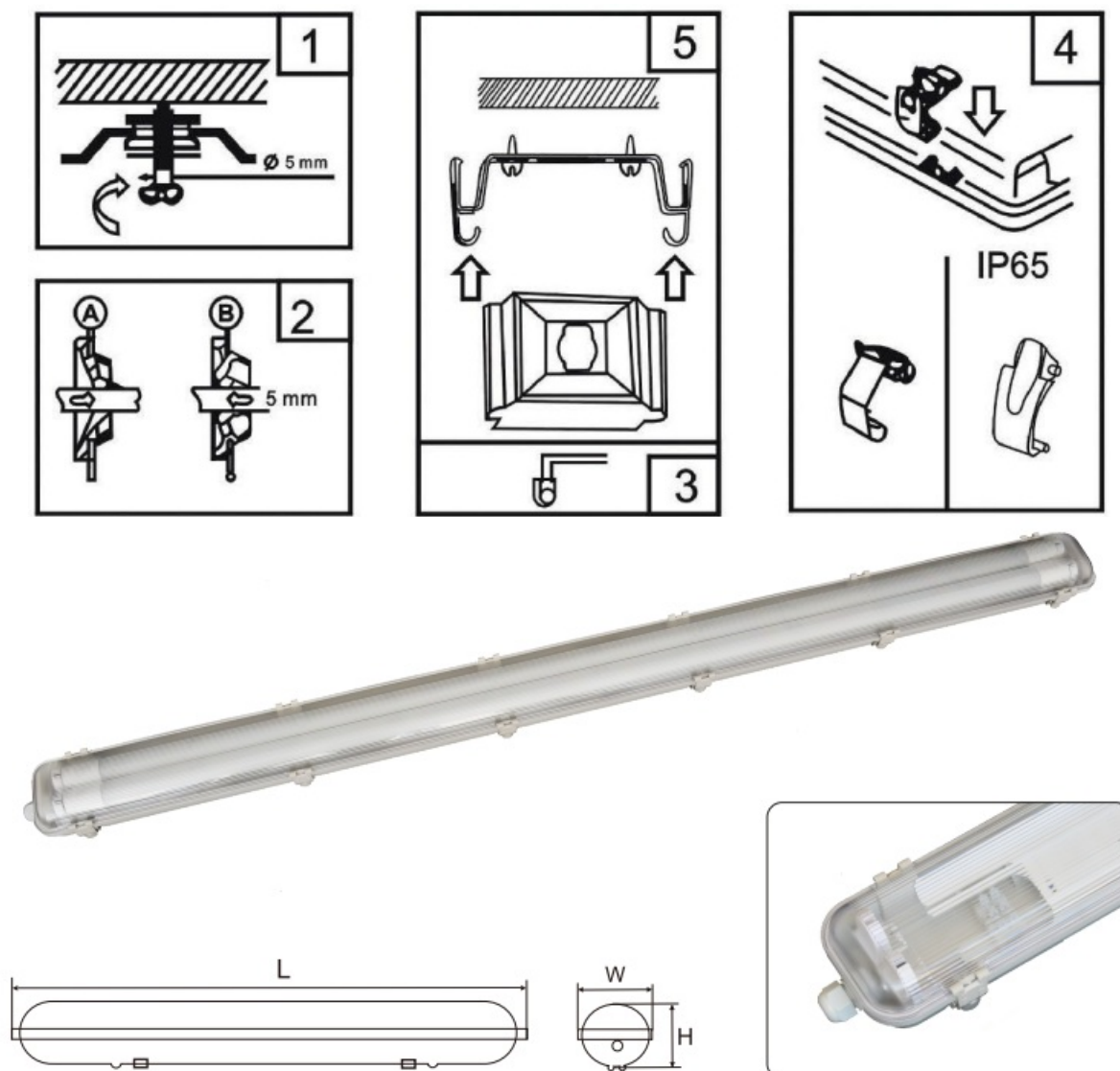
Specification

Type	Watt	L	W	H	Clips
LEDWPT8-109	9W	660	65	60	6
LEDWPT8-209	2X9W	660	95	60	6
LEDWPT8-118	1X18W	1270	65	60	12
LEDWPT8-218	2X18W	1270	95	60	12
LEDWPT8-122	1X22W	1570	65	60	12
LEDWPT8-222	2X22W	1570	95	60	12

Environmental Protection

-  Waste electrical products should not be disposed of with household waste.
- Please recycle where facilities exist. Check with your Local Authority or retailer for recycling advice.

ASSEMBLING INSTRUCTIONS



User Warning: This product is only suitable for use in conjunction with an LED tube.

BRANCH CONTACT DETAILS

- **Johannesburg:** 010 202 3300
- **Cape Town:** 021 510 0710
- **Pinetown:** 031 700 4215
- **Germiston:** 011 418 9600
- **Riverhorse:** 031 492 4800

NATIONAL CALL CENTRE

- **Sales** 010 202 3400
- **Technical** 010 2023500
- <http://www.acdc.co.za>.



- www.acdc.co.za.

Documents / Resources



[ACDC Dynamics LEDWPT8-109 T8 LED Weatherproof Linear Lights](#) [pdf] Instruction Manual

LEDWPT8-109 T8 LED Weatherproof Linear Lights, LEDWPT8-109, T8 LED Weatherproof Linear Lights, LED Weatherproof Linear Lights, Linear Lights, Lights

References

- [User Manual](#)

[Manuals+](#), [Privacy Policy](#)

This website is an independent publication and is neither affiliated with nor endorsed by any of the trademark owners. The "Bluetooth®" word mark and logos are registered trademarks owned by Bluetooth SIG, Inc. The "Wi-Fi®" word mark and logos are registered trademarks owned by the Wi-Fi Alliance. Any use of these marks on this website does not imply any affiliation with or endorsement.