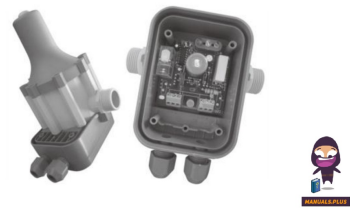


**ACDC**  
—DYNAMICS  
DKS-1.1Hydrostat 1-3  
Bar Adjustable Ip65



# ACDC Dynamics DKS-1.1Hydrostat 1-3 Bar Adjustable Ip65 Installation Guide

[Home](#) » [ACDC DYNAMICS](#) » ACDC Dynamics DKS-1.1Hydrostat 1-3 Bar Adjustable Ip65 Installation Guide 

## Contents

- [1 ACDC Dynamics DKS-1.1Hydrostat 1-3 Bar Adjustable Ip65](#)
- [2 SPECIFICATIONS](#)
- [3 INSTRUCTIONS FOR CORRECT UNIT INSTALLATION](#)
- [4 WIRING DIAGRAMS FOR CONNECITNG THE UNIT TO DIFFERENT KINDS OF PUMP'S MOTORS](#)
- [5 POSSIBLE WORKING DEFECTS](#)
- [6 UNIT STARTING AND WORKING](#)
- [7 BRANCH CONTACT DETAILS](#)
- [8 NATIONAL CALL CENTRE](#)
- [9 Documents / Resources](#)
  - [9.1 References](#)
- [10 Related Posts](#)



**ACDC Dynamics DKS-1.1Hydrostat 1-3 Bar Adjustable Ip65**



## SPECIFICATIONS

- **Input voltage** 220-240V
- **Frequency** 50-60Hz
- **Intensity Max** 10A
- **Protection rating** IP65
- **Maximum working pressure** 10 bar
- **Max working temperature** 60°C
- **Connection** 1" male

## INSTRUCTIONS FOR CORRECT UNIT INSTALLATION

If the column of water between the pump and the highest tap exceeds 15 mts, the unit cannot be installed directly on the pump, but it has to be raised until the column of water between the unit and the highest tap does not exceed 15 mts.  
I.E. If column of water is 20 mts. From the pump, the unit must be placed 5 mts higher than the pump.

It is advisable to connect the unit outlet to the system by means of a flexible hose.

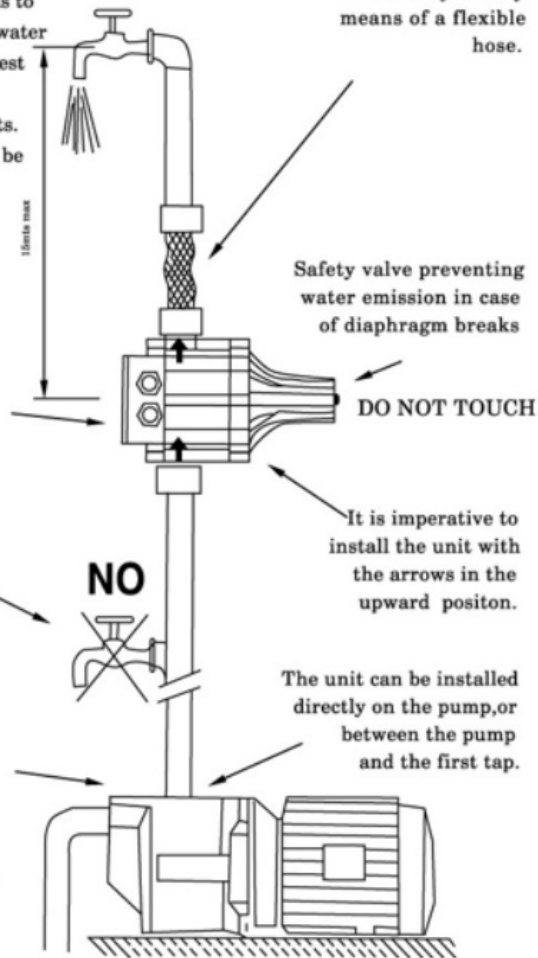
The unit is equipped with a check valve to prevent the pipeline from losing pressure.

No taps can be installed between the pump and the unit.

#### PUMP'S PRESSURE

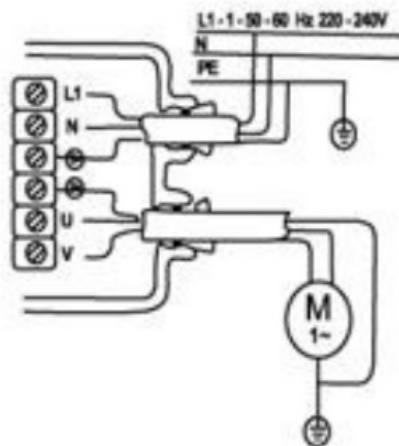
The unit is pre-set by the manufacturer at a restarting pressure of 1.5 bar.  
The pressure produced by the pump must be normally 0.8 bar higher than the pre-set pressure.

Before starting the unit check suction and ensure that the pump is primed.



## WIRING DIAGRAMS FOR CONNECITNG THE UNIT TO DIFFERENT KINDS OF PUMP'S MOTORS

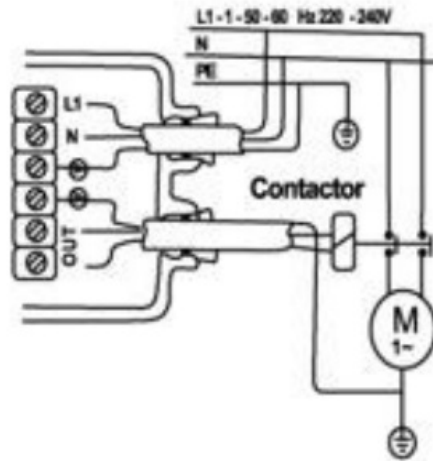
- Wiring diagram for connection of single -phase 220V pumps up to 1.1 Kw.



- Wiring diagram for connection of single phase 220V pumps over 1.1 Kw. Through remote control switch.

### SPECIFICATIONS FOR REMOTE CONTROL SWITCH

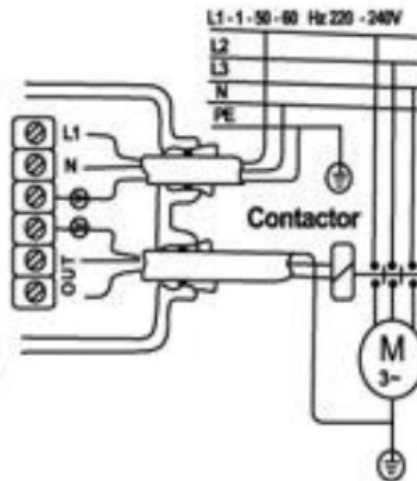
Minimum contacts capacity of 4 Kw or 5.5 HP approx. 220V



- Wiring diagram for connection of three phase 380V motor pumps through remote control switch.

#### SPECIFICATIONS FOR REMOTE CONTROL SWITCH

Minimum contacts capacity of 4 Kw or 5.5 HP approx. 220V



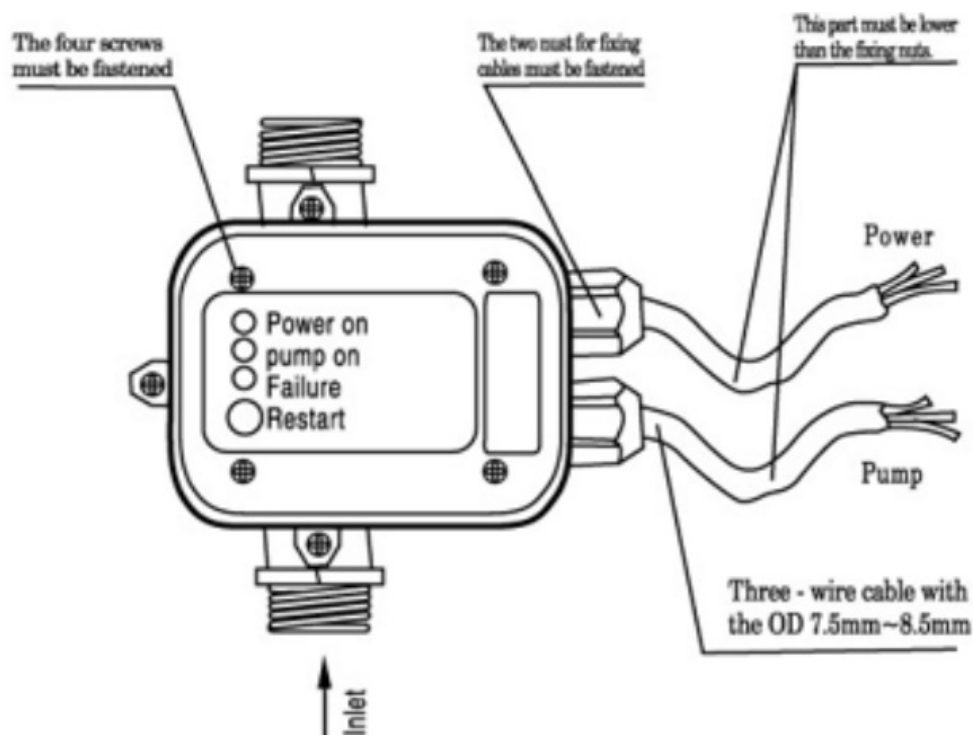
#### POSSIBLE WORKING DEFECTS

TYPE OF DEFECT	CAUSES DEPENDING ON THE UNIT	CAUSES NOT DEPENDING ON THE UNIT
- The pump does not start	- The electronic card is broken	- Voltage failure - Pump jammed - Electric cables inverted(Line/ motor)
- The pump does not stop	- The electronic card is broken - The flow detector is blocked in the upper position - The reset button is blocked - The pump does not provide sufficient pressure	- Presence of leaks which are higher than the minimum flow 0.6 l/min
- Intermittent pump working	- The electronic card is broken - The pump does not provide sufficient pressure	- Presence of leaks which are lower than the minimum flow 0.6 l/min
- The pump is jammed	- The electronic card is broken - The pump provides a pressure which is lower than the restarting pressure	- Water failure - Suction problems

## UNIT STARTING AND WORKING

### Warning

- Never take the electronic board out of the control box.
- The wiring diagram inside the terminal block will show you how to make correct connection. Wrong connection will destroy the whole electronic circuit.
- Cable used for connection must be a three-wired one with compulsory grounding end
- It shall have the outer diameter at 7.5mm min and 8.5mm max. One of the leading end of the cable must be lower than the position of the fixing screws while the cable being connected to the power as shown in the Fig.
- The four screws on the panel board and the two nuts for fixing cable must be well fastened to avoid water entering into the control box and damaging the electronic circuit.



### STARTING

- When the unit is connected to the electrical network, the green led “Power On”lights up and the yellow led “On” (pump in operation)indicates that the pump has been started.
- The pump continues to operate for dozens of seconds enabling the system to fill in the pipes and to reach the required pressure.
- If this lapse is insufficient, the red led “Failure”lights up.In this event,keep the “Restart” button pressed and wait, with a tap opened, until the red led is off.
- Once released the button and closed the tap, the unit stops the pump at its maximum pressure.

### FUNCTIONING

- The starting operation archived, the unit is programmed to perform all the pump control operations automatically.
- When particular operational breakdowns occur,such as water failure, obstruction of the suction pipe etc., The

unit recognizes the breakdown and the red led "Failure" lights up;at the same time a stop signal is sent to the pump to prevent damages caused by its working in the absence of water.

- Rectification of the failures that have caused the blockage, allows the system to be restarted by pressing the "Restart" button.


## BRANCH CONTACT DETAILS

- **Johannesburg** 010 202 3300
- **Germiston** 011 418 9600
- **Cape Town** 021 510 0710
- **Pinetown** 031 700 4215
- **Riverhorse** 031 492 4800

## NATIONAL CALL CENTRE

- **Sales** 010 202 3400
- **Technical** 010 202 3500
- [www.acdc.co.za](http://www.acdc.co.za)

## Documents / Resources

	<p><a href="#">ACDC Dynamics DKS-1.1Hydrostat 1-3 Bar Adjustable Ip65</a> [pdf] Installation Guide DKS-1.1 Hydrostat 1-3 Bar Adjustable Ip65, DKS-1.1, Hydrostat 1-3 Bar Adjustable Ip65, 1-3 Bar Adjustable Ip65, Adjustable Ip65, Ip65</p>
---	--

## References

- [User Manual](#)

[Manuals+](#), [Privacy Policy](#)

This website is an independent publication and is neither affiliated with nor endorsed by any of the trademark owners. The "Bluetooth®" word mark and logos are registered trademarks owned by Bluetooth SIG, Inc. The "Wi-Fi®" word mark and logos are registered trademarks owned by the Wi-Fi Alliance. Any use of these marks on this website does not imply any affiliation with or endorsement.