



ACCURIS INSTRUMENTS E5001-SmartDoc-2.0 SmartDoc Imaging System User Guide

[Home](#) » [ACCURIS INSTRUMENTS](#) » ACCURIS INSTRUMENTS E5001-SmartDoc-2.0 SmartDoc Imaging System User Guide 

Contents

- [1 ACCURIS INSTRUMENTS E5001-SmartDoc-2.0 SmartDoc Imaging System](#)
- [2 Product Information](#)
- [3 Product Usage Instructions](#)
- [4 DNA Stain Type](#)
- [5 INDICATION](#)
- [6 Documents / Resources](#)
 - [6.1 References](#)



ACCURIS INSTRUMENTS E5001-SmartDoc-2.0 SmartDoc Imaging System



Product Information

The product is a SmartDoc blue illumination base that serves as an excitation source for transilluminating DNA stains. It is compatible with two types of DNA stains: Ethidium and SmartGlow™ Bromide. The product comes with three E5001-ORANGE Orange PMMA filters, which are used with blue light, and two E5001-535 535nm filters and one E5001-590 590nm filter, which are used with UV transilluminators. The product also includes a photo filter that can be placed on the top platform.

Product Usage Instructions

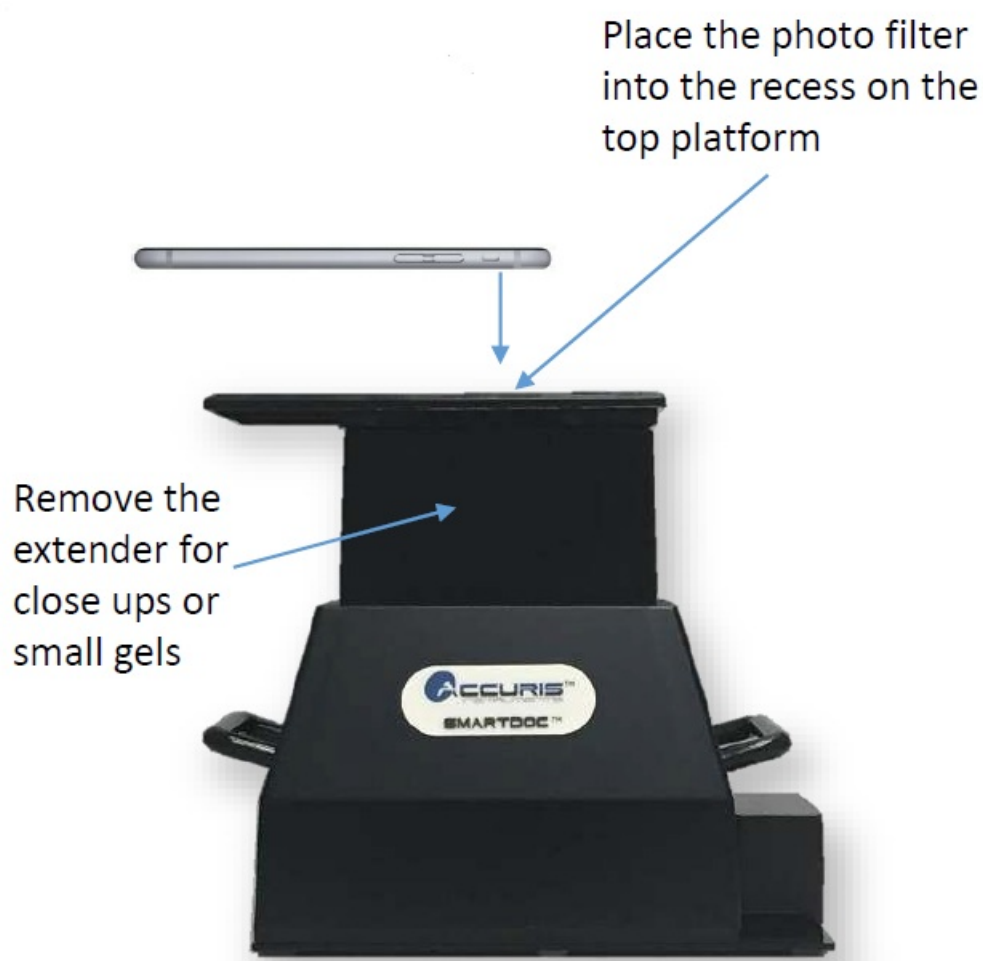
1. To use the SmartDoc blue illumination base, ensure that the product is connected to a power source.
2. Choose the appropriate DNA stain based on your requirements. Ethidium and SmartGlow™ Bromide are recommended options.
3. If using the blue light transilluminator, insert the E5001-ORANGE Orange PMMA filter into the designated slot on the top platform of the SmartDoc base.
4. If using a UV transilluminator, remove the extender for close-ups or small gels.
5. For UV transilluminators, insert the appropriate filter based on your needs. Use the E5001-535 535nm filter for general UV applications and the E5001-590 590nm filter for specific UV requirements.
6. If using the photo filter, place it into the recess on the top platform of the SmartDoc base.
7. Ensure that the DNA gel or sample is properly positioned on the transilluminator surface.
8. Turn on the SmartDoc blue illumination base and adjust the settings as needed.
9. Observe the DNA bands or fluorescence using appropriate imaging equipment.

For additional information about the product, you can visit the website www.accuris-usa.com or contact the company via email at info@accuris-usa.com.

DNA Stain Type

		Ethidium Bromide	SmartGlow™ SYBR® Green
<u>Excitation Source</u>	SmartDoc blue illumination base	Not recommended	E5001-ORANGE Orange PMMA Filter
	Blue light transilluminator	E5001-ORANGE Orange PMMA Filter	E5001-ORANGE Orange PMMA Filter
	UV transilluminator	E5001-590 590nm Filter	E5001-535 535nm Filter

For optimum image quality:



- Remove the phone's case
- Line up the camera lens with the photo filter

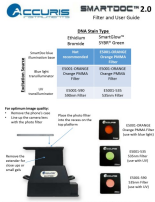
INDICATION



1. E5001-ORANGE Orange PMMA Filter (use with blue light)
2. E5001-535 535nm Filter (use with UV)
3. E5001-590 535nm Filter (use with UV)

For additional info visit www accuris-usa.com, email info@accuris-usa.com

Documents / Resources

	<p>ACCURIS INSTRUMENTS E5001-SmartDoc-2.0 SmartDoc Imaging System [pdf] User Guide</p> <p>E5001-SmartDoc-2.0 SmartDoc Imaging System, SmartDoc Imaging System, Imaging System</p>
---	---

References

- [USA Location information - USA.com](#)
- [Home - Accuris Instruments](#)
- [Home - Accuris Instruments](#)