



Accton Cheetah PCI Adapter Port Ethernet PCI Network Card Installation Guide

[Home](#) » [ACCTON](#) » Accton Cheetah PCI Adapter Port Ethernet PCI Network Card Installation Guide 

Accton

Making Partnership Work
Cheetah PCI Adapter
Quick Installation Guide

Contents

- [1 Introduction](#)
- [2 Package Checklist](#)
- [3 Installation](#)
- [4 Troubleshooting](#)
- [5 Documents / Resources](#)
- [5.1 References](#)

Introduction

Accton's Cheetah PCI Adapter is a dual-speed Fast Ethernet card for PCI local bus compliant computers. A true plug-and-play device, this card is auto-configurable upon power up and also supports auto-negotiation to automatically select the optimum speed and communication mode of an attached device. Additionally, the Cheetah PCI Adapter complies with ACPI, Wired for Management 2.0, and PC99, and includes support for Remote Wake-Up by Magic Packet™.

Package Checklist

Accton's Cheetah PCI Adapter includes:

- 1 Cheetah PCI Adapter (EN1207D-TX)

- 1 driver diskette
- 1 registration card (please return)
- This Quick Installation Guide

Immediately inform your dealer in the event of any incorrect, missing or damaged parts. If possible, please retain the carton and original packing materials in case there is a need to return the product.

Note that new or updated driver information is available via Accton's Web site.

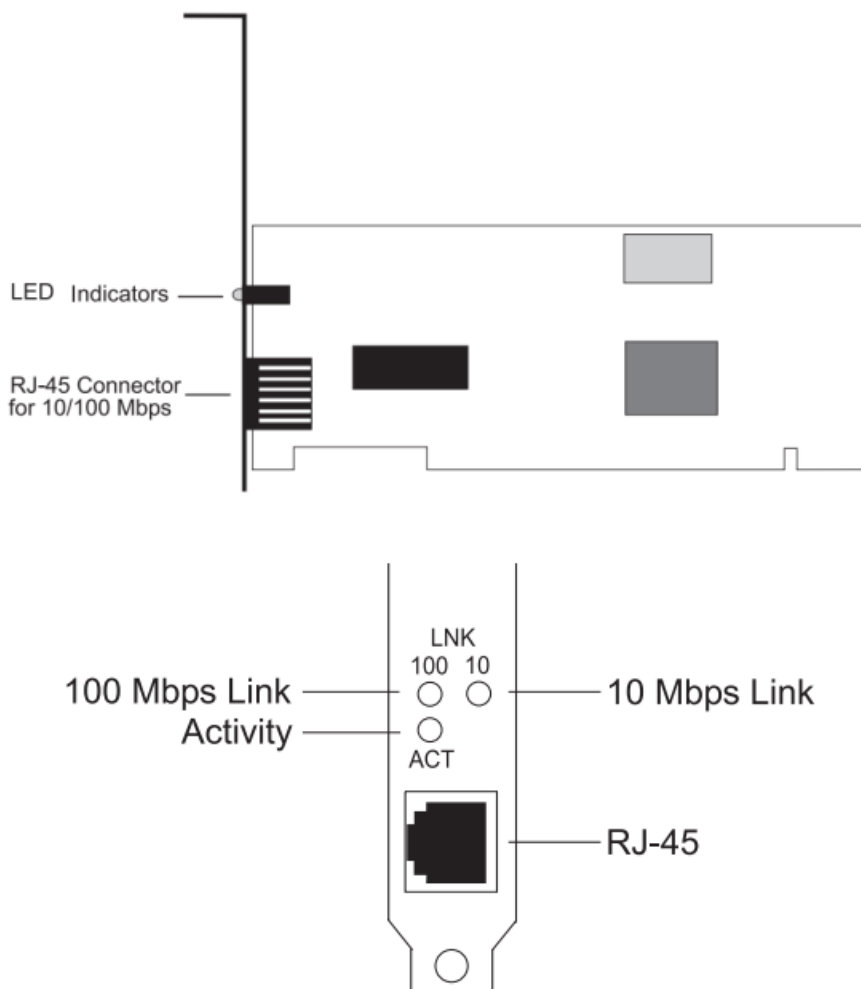
Please fill out and return the registration card to Accton. The Cheetah PCI Adapter is covered by a limited lifetime warranty.

Hardware Description

The Cheetah PCI Adapter is equipped with :

- 1 10BASE-T/100BASE-TX RJ-45 port
- 3 LED indicators

The components of the Cheetah PCI Adapter are shown in the figure below:



LED Indicators

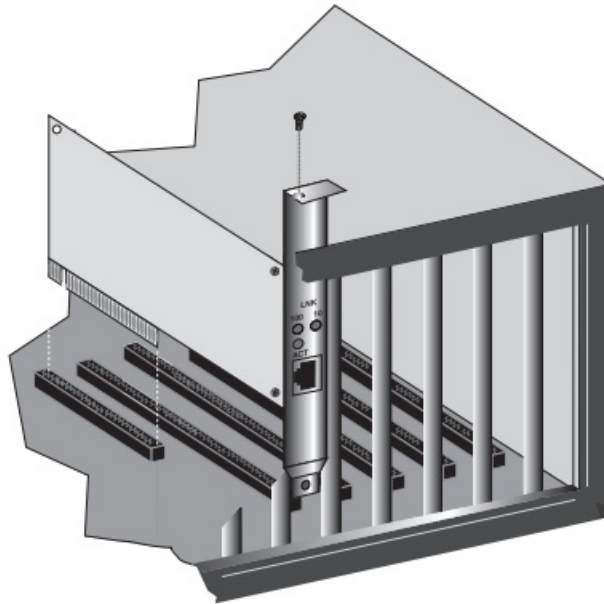
The following table describes the operation of the Cheetah PCI Adapter status LEDs:

LED		Status	Description
LNK			
	10 Mbps	Green	Valid 10BASE-T link
		Off	Power is off: 10BASE-T connection is invalid
	100 Mbps	Green	Valid 100BASE-TX link
		Off	Power is off: 100BASE-TX connection is invalid
ACT		Green	Heavy network activity
		Blinking	Intermittent or light network activity (the blinking rate is proportional to the amount of network traffic)

Installation

Warnings:

- Network cards are sensitive to static electricity. To protect the card, avoid touching its electrical components and always touch the metal chassis of your computer before handling the card.
- Backup your driver diskette and use the copy as the working diskette to protect the original from accidental damage.
 1. Switch off the computer, unplug the power cord, and remove the computer's cover.
 2. Select an unused PCI bus-master slot and remove its protective bracket.
 3. Carefully insert the card and press until all the edge connectors are firmly seated inside the slot. Then, screw the card's bracket securely into the PC's chassis.

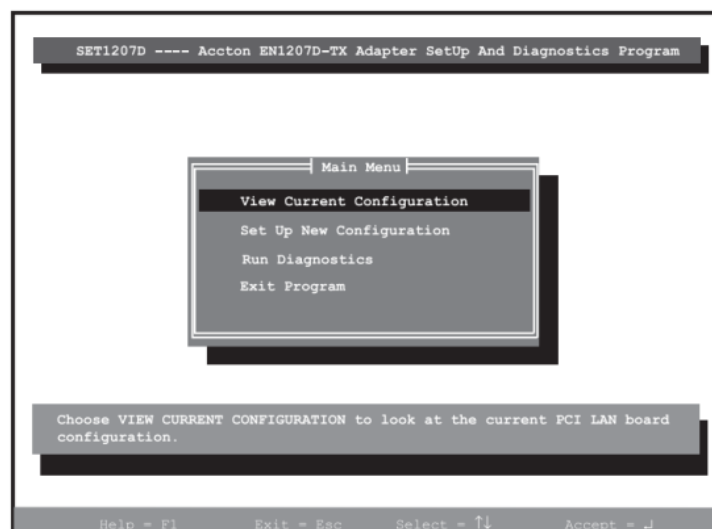


- Connect the Cheetah PCI Adapter directly to a 10BASE-T or 100BASE-TX hub or switch using UTP cable (Category 3, 4 or 5 for 10BASE-T; Category 5 for 100BASE-TX). The maximum allowable length of UTP cable connections is 100 meters (328 ft.). When inserting an RJ-45 plug, be sure the tab on the plug clicks into position to ensure that it is properly seated.
5. Replace the computer's cover and power it on. The Cheetah PCI Adapter should be automatically configured by the host computer's BIOS. However, if you have an older computer, you may have to manually configure the computer's BIOS settings. See "Troubleshooting."
6. Install the appropriate network driver for your operating system. The Accton driver diskette that accompanies the Cheetah PCI Adapter contains all the network operating system drivers supported by this card. For convenience, the Windows 95/98 and Windows NT drivers are placed in the diskette's root directory. Please read the "RELEASE.TXT" file on the diskette for a list of all drivers. A text file is included with each driver to detail the proper installation procedure. Any new or updated drivers can be downloaded from Accton's Web site at <http://www.accton.com>.

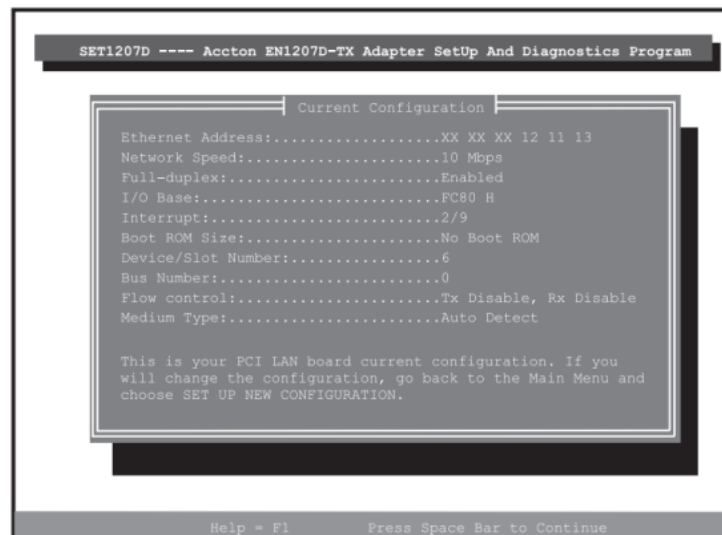
Setup Program

If the Cheetah PCI Adapter is not automatically configured by the host PC, or there is a problem with the card, run the DOS- based Setup Program to help configure the PC's BIOS settings and test the card.

1. Boot the computer to a full DOS environment (not a DOS window) and run the Setup Program, SET1207D.EXE, on the Accton driver diskette. The screen will display the Main Menu (see below).



2. Select the “View Current Configuration” option from the Main Menu to access the screen shown below. If you wish to modify the current configuration, return to the Main Menu and select “Setup New Configuration.”

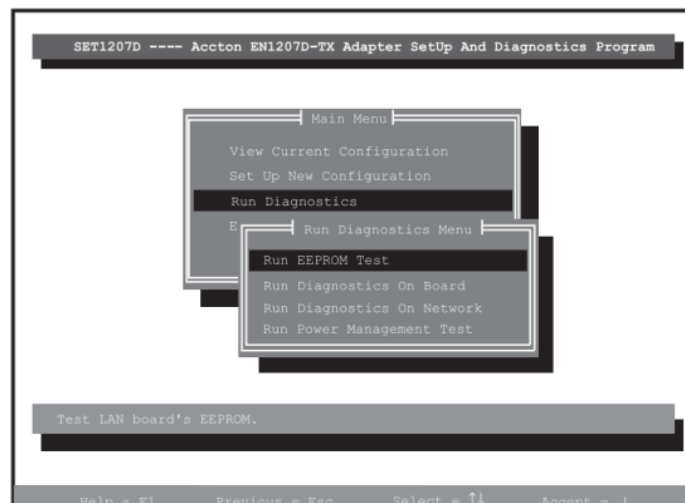


3. The host computer’s BIOS automatically allocates the necessary resources, such as the Interrupt and I/O Base, to the Cheetah PCI Adapter. Although the Setup Program will not allow you to change those resources, you can change the settings displayed on the “Setup New Configuration” screen (see below).



4. In the event of a problem with the Cheetah PCI Adapter, use the Setup Program to run the card's built-in diagnostics (see the “SET1207D.TXT” file for specific instructions).

Should any of the diagnostic tests fail, reboot your computer and run the diagnostics again to see if the problem persists. If it does, record the failure indicated and contact Accton’s Technical Support for assistance.



Troubleshooting

Check the following troubleshooting items before contacting Accton Technical Support.

PCI Compatibility

Some PCI computers are not self-configuring and require you to perform some or all of the following functions by motherboard jumper changes and/or BIOS Setup program configuration:

- Make sure your BIOS correctly supports the PCI Local Bus Specification v2.0 or later and upgrade your computer BIOS to the latest version.
- Verify that the PCI slot is an enabled bus-master slot and not a slave PCI slot. In some computers the PCI slot must be configured to enable bus mastering. Refer to your PC's manual and check the PCI BIOS Setup program to be sure the PCI slot is an enabled bus-master slot.
- In some computers, you may be required to disable Plug 'n Play (PnP) in the BIOS Setup program if resources are not properly assigned between installed cards.
- Some computers may require you to reserve interrupts and memory addresses for installed ISA cards to prevent PCI cards from using the same settings. Refer to your PC's manual and check the PCI BIOS Setup program configuration options for ISA cards.
- Make sure the PCI slot is configured to support INTA.
- Be sure that INTA for the slot is assigned to a free interrupt (IRQ) number.
- Check the BIOS Setup program's PCI parameters for the slot where the Cheetah PCI Adapter is installed. Be sure the slot is configured for level-triggered interrupts instead of edge-triggered interrupts. An example of typical PCI parameters follows:

PCI Slot #: (slot number where the network card is installed)

Master:Enabled

Slave:Enabled

Latency Timer:

Interrupt Type:

40 (range is 20 to 255)

Level-Triggered Interrupt Number: (choose any number the BIOS Setup supplies that does not conflict with another installed card)

Note: The wording of these parameters varies with different computers, and not all parameters may be configurable.

Always consult your computer manual for information on changing motherboard jumper settings and BIOS Setup program parameters for use with PCI network cards. If you set a motherboard jumper and modify the computer's BIOS Setup, make sure the jumper and BIOS settings match.


Adapter Installation Problems

If your computer can't find the Cheetah PCI Adapter or the network driver doesn't install correctly, check the following:

- Make sure the adapter is securely seated in the PCI slot. Check for any hardware problems, such as physical damage to the card's edge connector.
- Try the card in another PCI bus-master slot. If all fails, test with another Cheetah PCI Adapter that is known to operate correctly.
- Check for resource conflict in the PCI configuration. See "PCI Compatibility."
- Make sure your computer is using the latest BIOS available.
- If there are other network adapters in the computer, they may be causing conflict. Remove all other adapters from the computer and test the Accton adapter separately.

- Check for a defective computer or PCI bus by trying the adapter in another computer that is known to operate correctly.

Documents / Resources

	Accton Cheetah PCI Adapter Port Ethernet PCI Network Card [pdf] Installation Guide Cheetah PCI Adapter Port Ethernet PCI Network Card, Adapter Port Ethernet PCI Network Card, Ethernet PCI Network Card, Network Card
---	---

References

- [Parked](#)
- [User Manual](#)

Manuals+ Privacy Policy

This website is an independent publication and is neither affiliated with nor endorsed by any of the trademark owners. The "Bluetooth®" word mark and logos are registered trademarks owned by Bluetooth SIG, Inc. The "Wi-Fi®" word mark and logos are registered trademarks owned by the Wi-Fi Alliance. Any use of these marks on this website does not imply any affiliation with or endorsement.